

J. T. Hymas (Site Investigation) Ltd.
12 Yarm Road, Stockton on Tees
TS18 3NA

Tel 01642 607083
Fax 01642 612355

BOREHOLE LOG

Project AVECIA, Billingham				BOREHOLE No TP2	
Job No 15275	Date 09-07-01	Ground Level (m)	Co-Ordinates ()		
Contractor Groundquest				Sheet 1 of 1	

SAMPLES & TESTS			Water	STRATA			Geology	Instrument/ Backfill
Depth	Type No	Test Result		Reduced Level	Legend	Depth (Thickness)		
0.18-0.80	D				0.18	MADE GROUND: Gravel overlying Concrete.		
					(0.62)	MADE GROUND: Pink grey sandy fine to coarse gravel of brick and concrete with occasional slag. Clay pipe 150mm diameter at 0.18m depth.		
0.80	W				0.80	Firm stiff light brown sandy CLAY.		
1.00-1.20	D				(0.80)	Black organic silty clayey pocket at 1.0 to 1.20m on north face, possibly associated with service run.		
					1.60	Firm to stiff brown with grey veins slightly silty sandy indistinctly thinly laminated CLAY.		
					(0.60)	Turns more silty and laminated with depth.		
					2.20			

Boring Progress and Water Observations						Chiselling			Water Added		GENERAL REMARKS
Date	Time	Depth	Casing Depth	Casing Dia. mm	Water Dpt	From	To	Hours	From	To	
											Trial pit backfilled with arisings upon completion. Water within gravel layer at 0.7m.

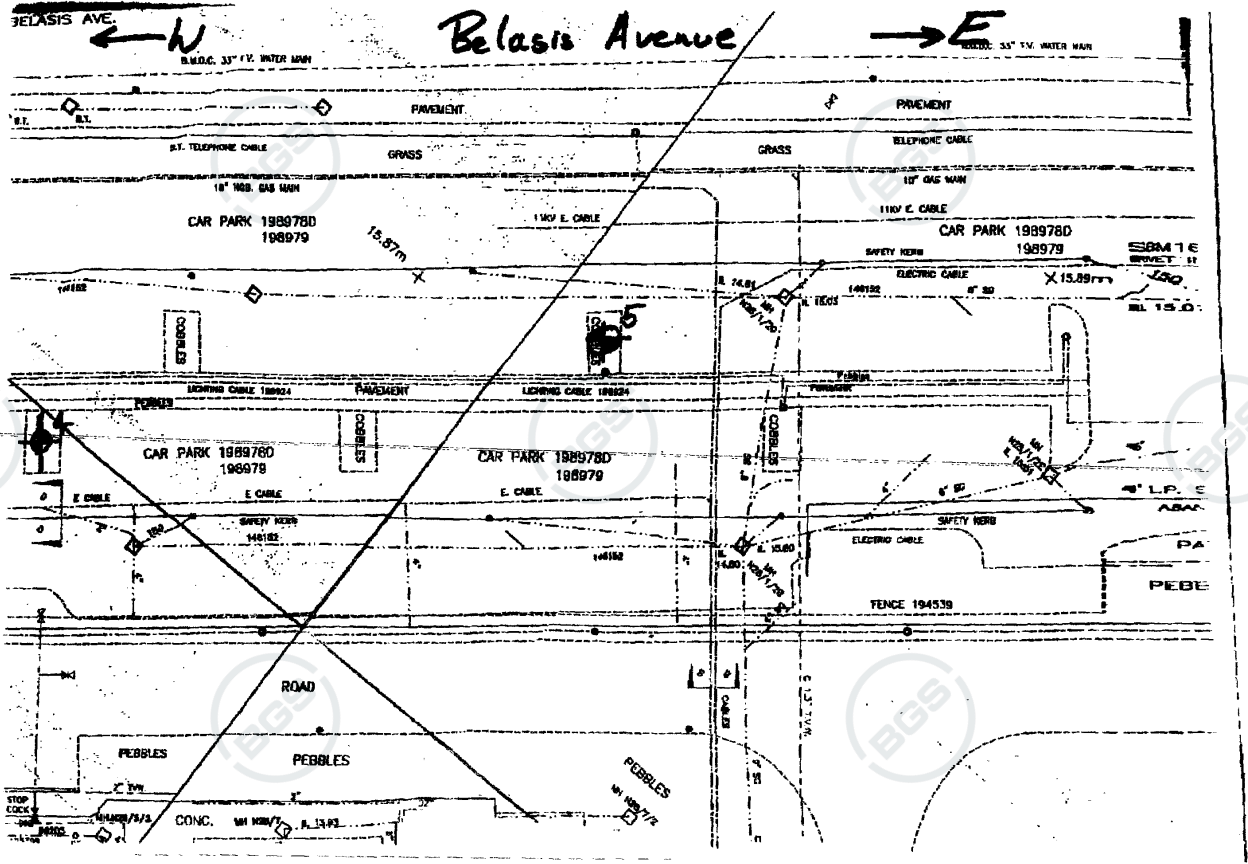
HYMASLOG 15275.GPJ JTHYMAS.GDT 08/09/01

All dimensions in metres Scale 1:25	Client AVECIA	Method/ Plant Used	Logged By
--	-------------------------	-----------------------	-----------

16-AUG-01 11:12

01642364463

P.02



16-AUG-2001 11:12

ZENITH LSP

NO.009

P.2/2