

J. T. Hymas (Site Investigation) Ltd.
12 Yarm Road, Stockton on Tees
TS18 3NA

Tel 01642 607083
Fax 01642 612355

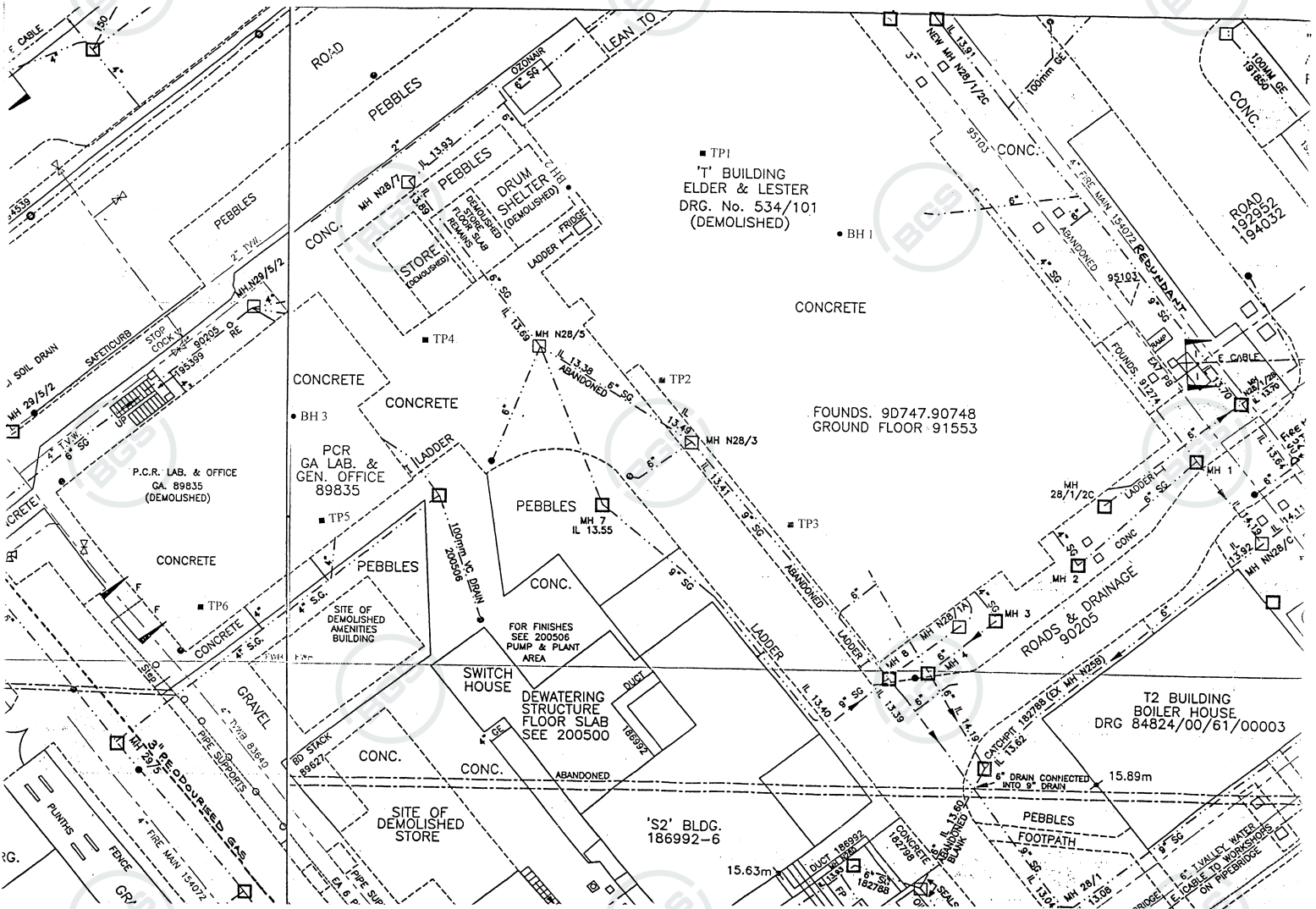
BOREHOLE LOG

Project AVECIA, Billingham				BOREHOLE No TP1	
Job No 15275	Date 09-07-01	Ground Level (m)	Co-Ordinates ()		
Contractor Groundquest				Sheet 1 of 1	

SAMPLES & TESTS			STRATA					Geology	Instrument/ Backfill
Depth	Type No	Test Result	Water	Reduced Level	Legend	Depth (Thickness)	DESCRIPTION		
0.15-0.40	D					0.15	MADE GROUND: Concrete.		
						(0.25)	MADE GROUND: Pink grey sandy fine to coarse gravel of brick and concrete.		
1.00-1.20	D					0.40	Firm stiff light brown sandy CLAY.		
						(0.60)			
						1.00	Soft to firm grey brown silty sandy CLAY.		
						(0.50)	Turns orange brown and firm by 1.3m. Wet sand and silt layers below 1.4m.		
						1.50	Firm to stiff brown with grey veins slightly silty sandy indistinctly thinly laminated CLAY.		
				(1.10)		Turns more silty and laminated with depth.			
						2.60			

Boring Progress and Water Observations						Chiselling			Water Added		GENERAL REMARKS
Date	Time	Depth	Casing Depth	Casing Dia. mm	Water Dpt	From	To	Hours	From	To	
											Trial pit backfilled with arisings upon completion. Trial pit dry.
All dimensions in metres Scale 1:25			Client AVECIA			Method/ Plant Used			Logged By		

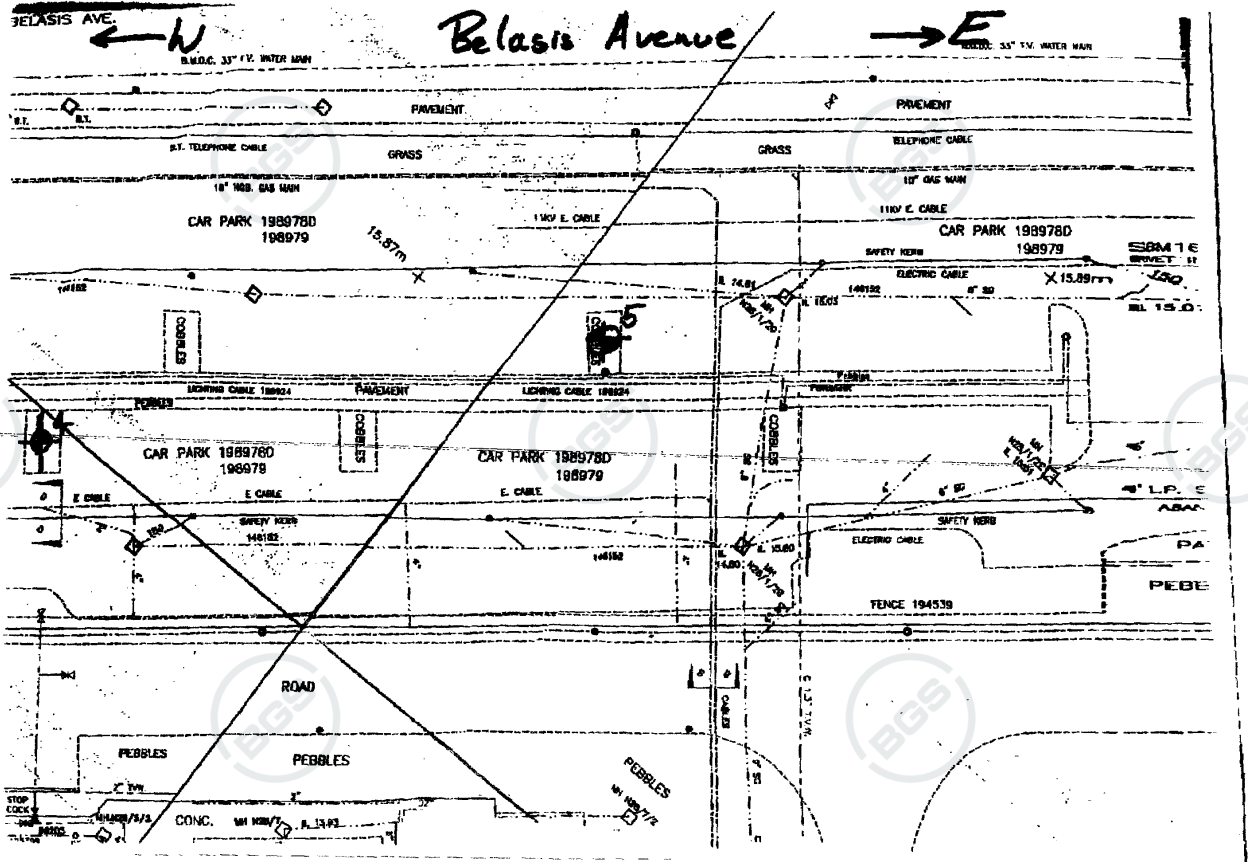
HYMAS\LOG 15275 GPJ_JTHYMAS.GDT 09/07/01



16-AUG-01 11:12

01642364463

P.02



16-AUG-2001 11:12

ZENITH LSP

NO.009

P.2/2