

Site Details:

448903 521705

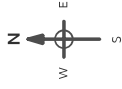
Client Ref: K239-WE2209GL
Report Ref: GS-2616443
Grid Ref: 448905, 521708

Map Name: County Series

Map date: 1855

Scale: 1:2,500

Printed at: 1:2,500



Surveyed 1855
 Revised N/A
 Edition N/A
 Copyright N/A
 Levelled N/A

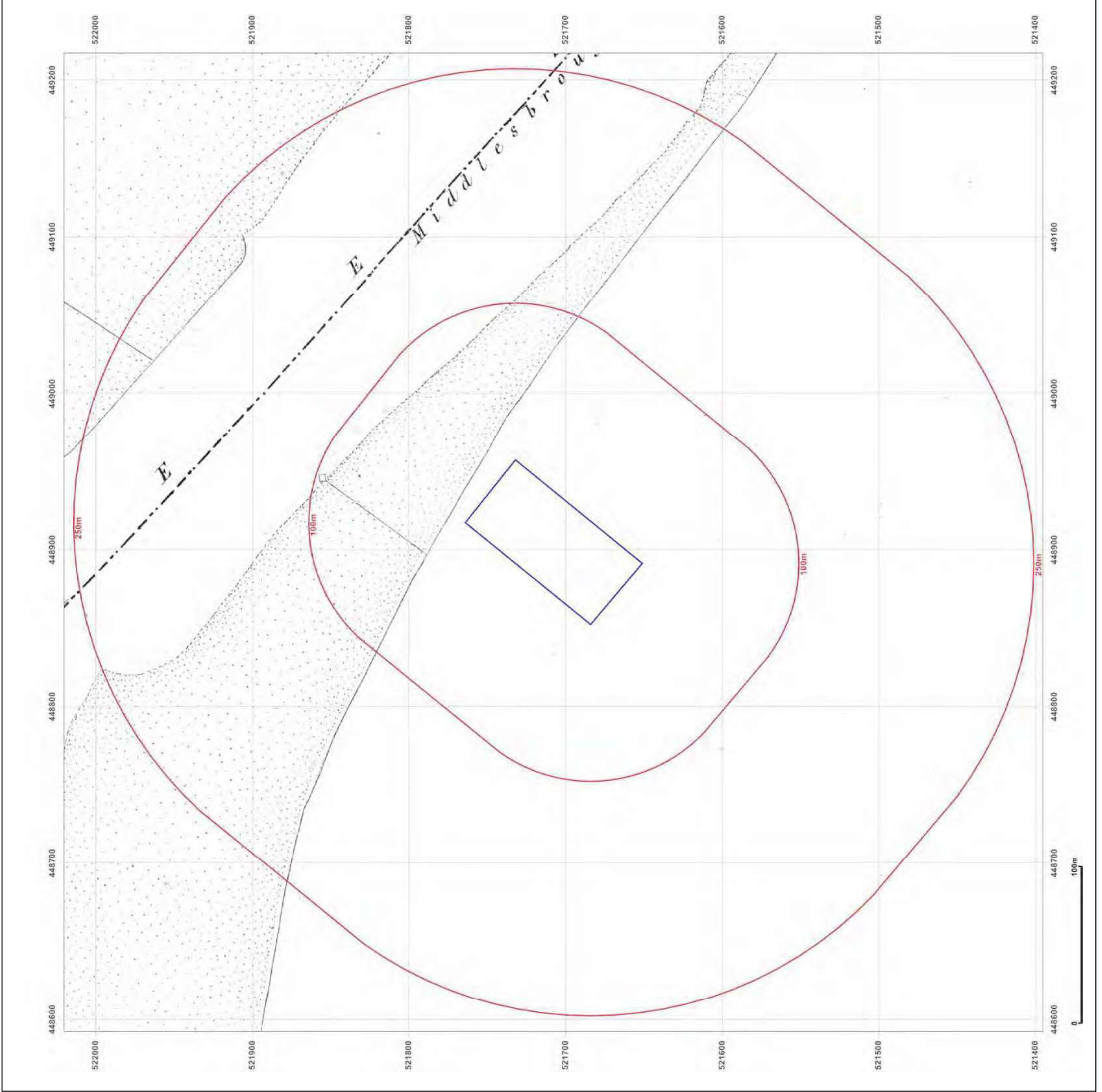


Produced by
 Groundsure Insights
 T: 08444 159000
 E: info@groundsure.com
 W: www.groundsure.com

© Crown copyright and database rights 2015 Ordnance Survey 100035207

Production date: 30 November 2015

To view map legend click here [Legend](#)



Site Details:
448903 521705

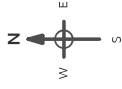
Client Ref: K239-WE2209GL
Report Ref: GS-2616443
Grid Ref: 448905, 521708

Map Name: County Series

Map date: 1899

Scale: 1:2,500

Printed at: 1:2,500



Surveyed 1899
Revised 1999
Edition N/A
Copyright N/A
Levelled N/A

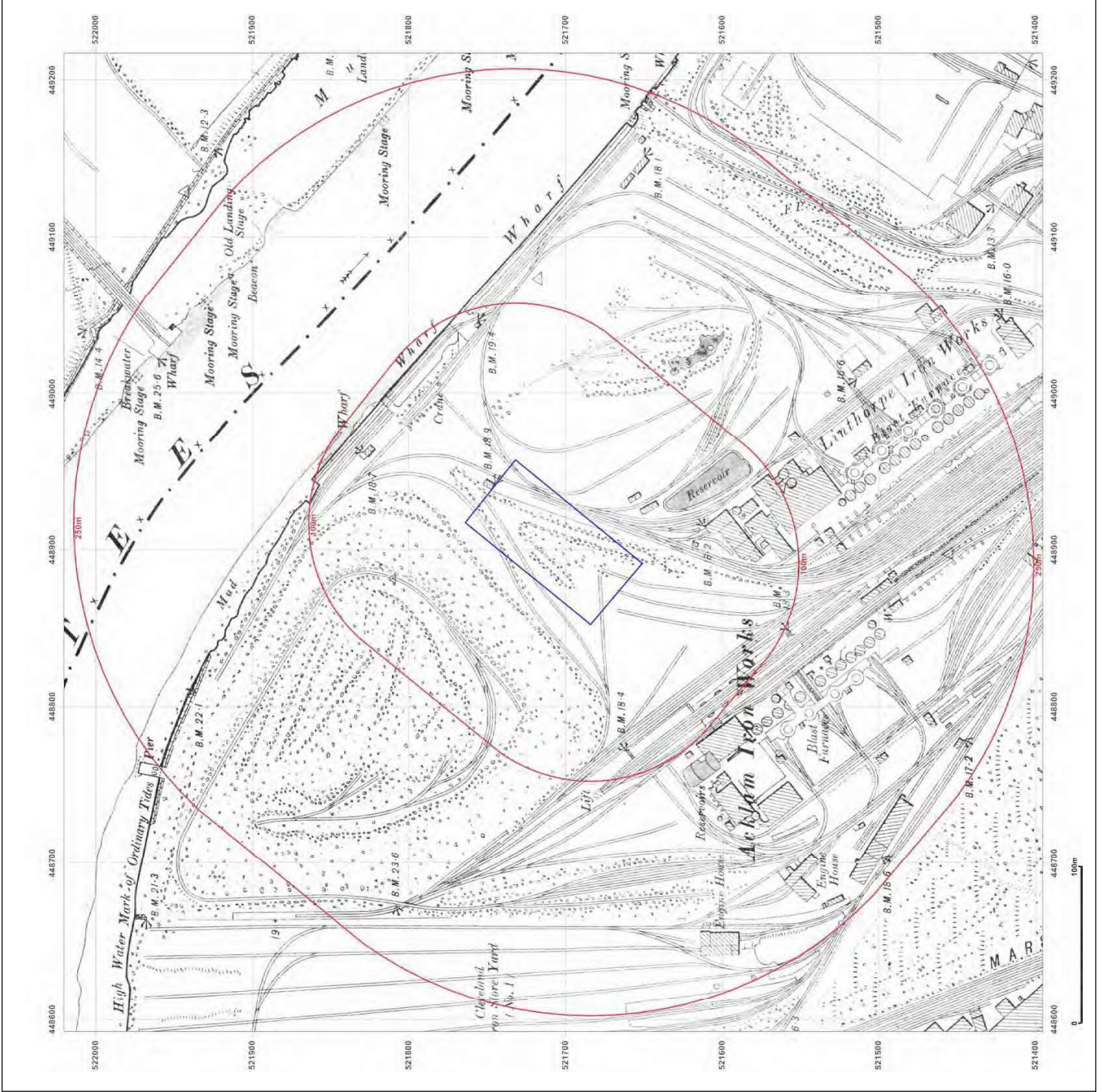


Produced by
Groundsure Insights
T: 08444 159000
E: info@groundsure.com
W: www.groundsure.com

© Crown copyright and database rights 2015 Ordnance Survey 100035207

Production date: 30 November 2015

To view map legend click here [Legend](#)



Site Details:

448903 521705

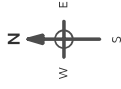
Client Ref: K239-WE2209GL
Report Ref: GS-2616443
Grid Ref: 448905; 521708

Map Name: County Series

Map date: 1915

Scale: 1:2,500

Printed at: 1:2,500



Surveyed 1915
 Revised 1915
 Edition N/A
 Copyright N/A
 Landed LMA

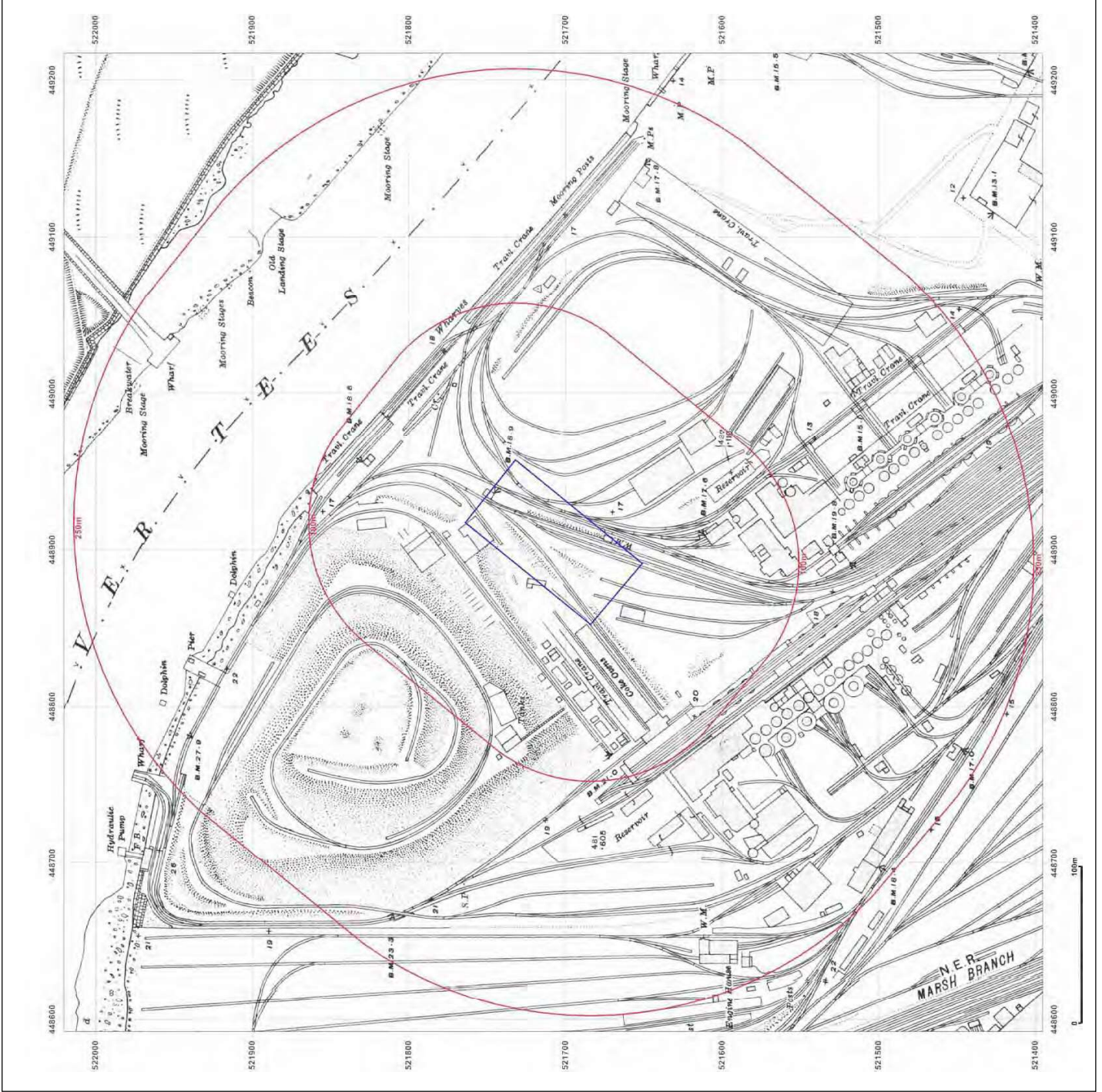


Produced by
 Groundsure Insights
 T: 08444 159000
 E: info@groundsure.com
 W: www.groundsure.com

© Crown copyright and database rights 2015 Ordnance Survey 100035207

Production date: 30 November 2015

To view map legend click here [Legend](#)



Site Details:
448903 521705

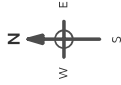
Client Ref: K239-WE2209GL
Report Ref: GS-2616443
Grid Ref: 448905, 521708

Map Name: County Series

Map date: 1929

Scale: 1:2,500

Printed at: 1:2,500



Surveyed 1929
Revised 1929
Edition N/A
Copyright N/A
Levelled N/A

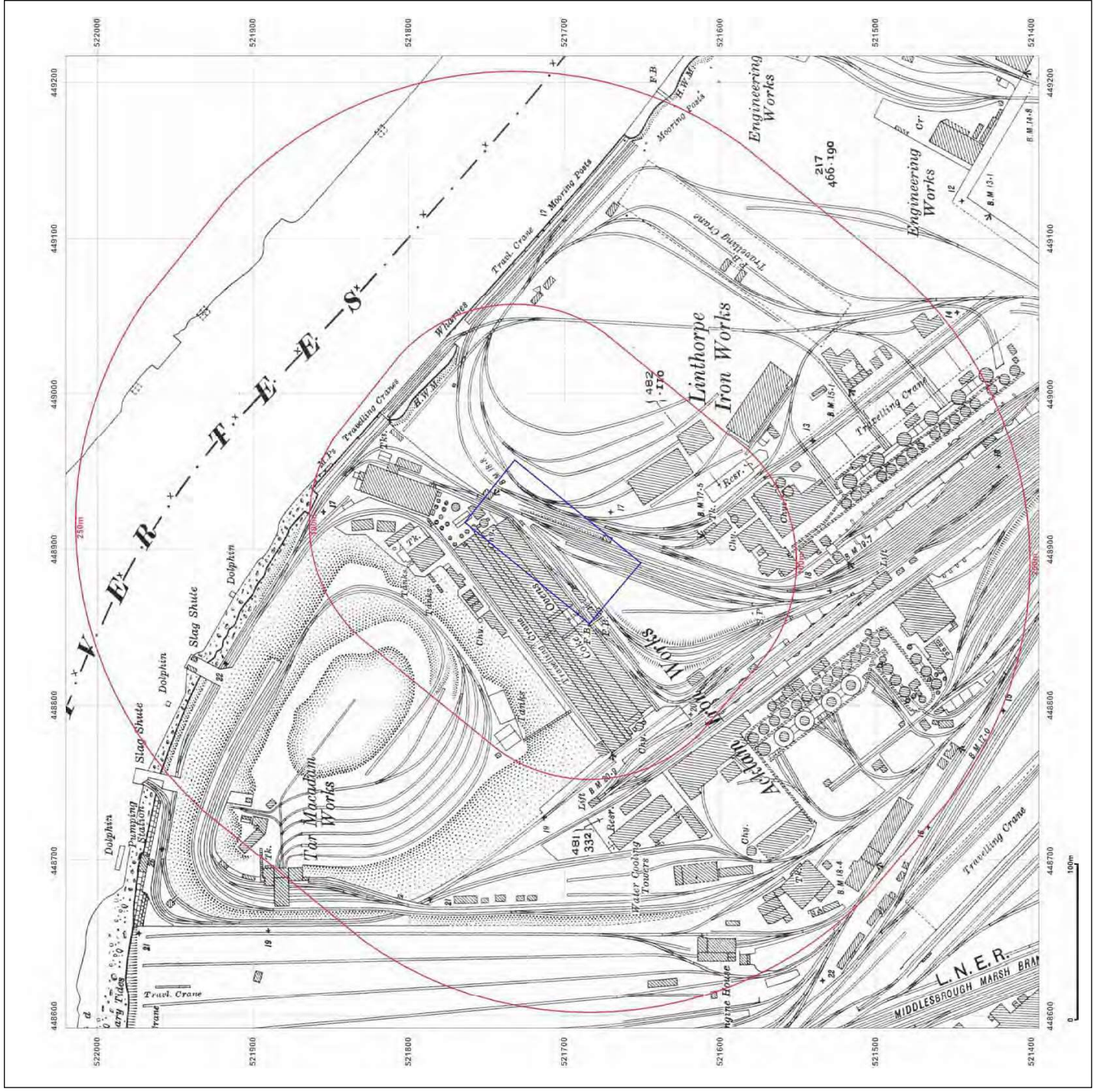


Produced by
Groundsure Insights
T: 08444 159000
E: info@groundsure.com
W: www.groundsure.com

© Crown copyright and database rights 2015 Ordnance Survey 100035207

Production date: 30 November 2015

To view map legend click here [Legend](#)



Site Details:

448903 521705

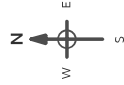
Client Ref: K239-WE2209GL
Report Ref: GS-2616443
Grid Ref: 448905, 521708

Map Name: National Grid

Map date: 1951

Scale: 1:1,250

Printed at: 1:2,000



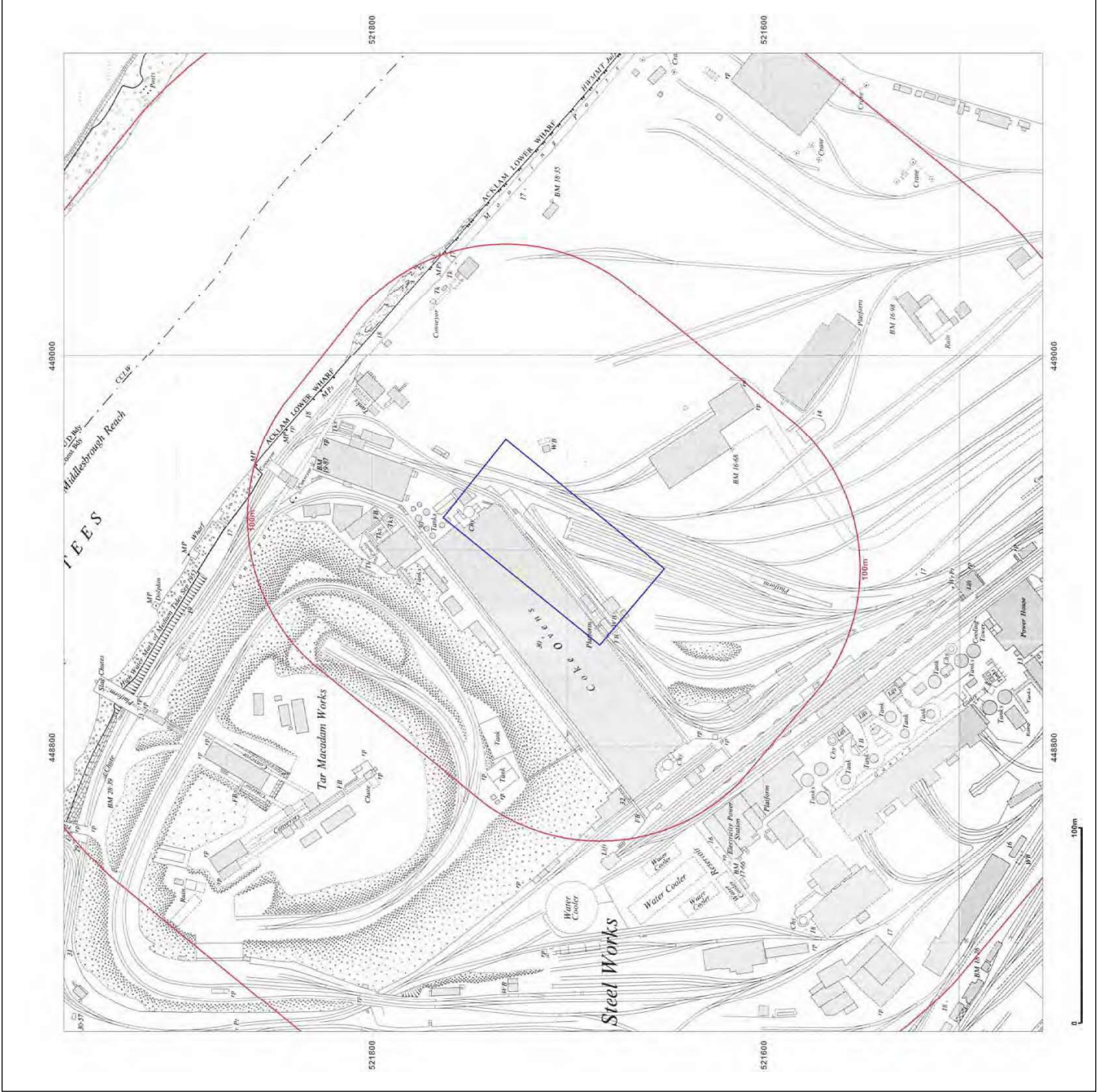
Surveyed 1951 Revised 1951 Edition N/A Copyright N/A Levelled 1948	Surveyed 1951 Revised 1951 Edition N/A Copyright N/A Levelled 1948
--	--



© Crown copyright and database rights 2015 Ordnance Survey 100035207

Production date: 30 November 2015

To view map legend click here [Legend](#)



Site Details:

448903 521705

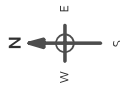
Client Ref: K239-WE2209GL
Report Ref: GS-2616443
Grid Ref: 448905; 521708

Map Name: National Grid

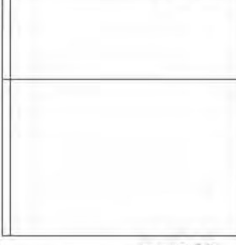
Map date: 1951

Scale: 1:2,500

Printed at: 1:2,500



Surveyed 1951
 Revised 1951
 Edition N/A
 Copyright N/A
 Levelled 1940



Surveyed 1951
 Revised 1951
 Edition N/A
 Copyright N/A
 Levelled 1946

Surveyed 1951
 Revised 1951
 Edition N/A
 Copyright N/A
 Levelled 1946

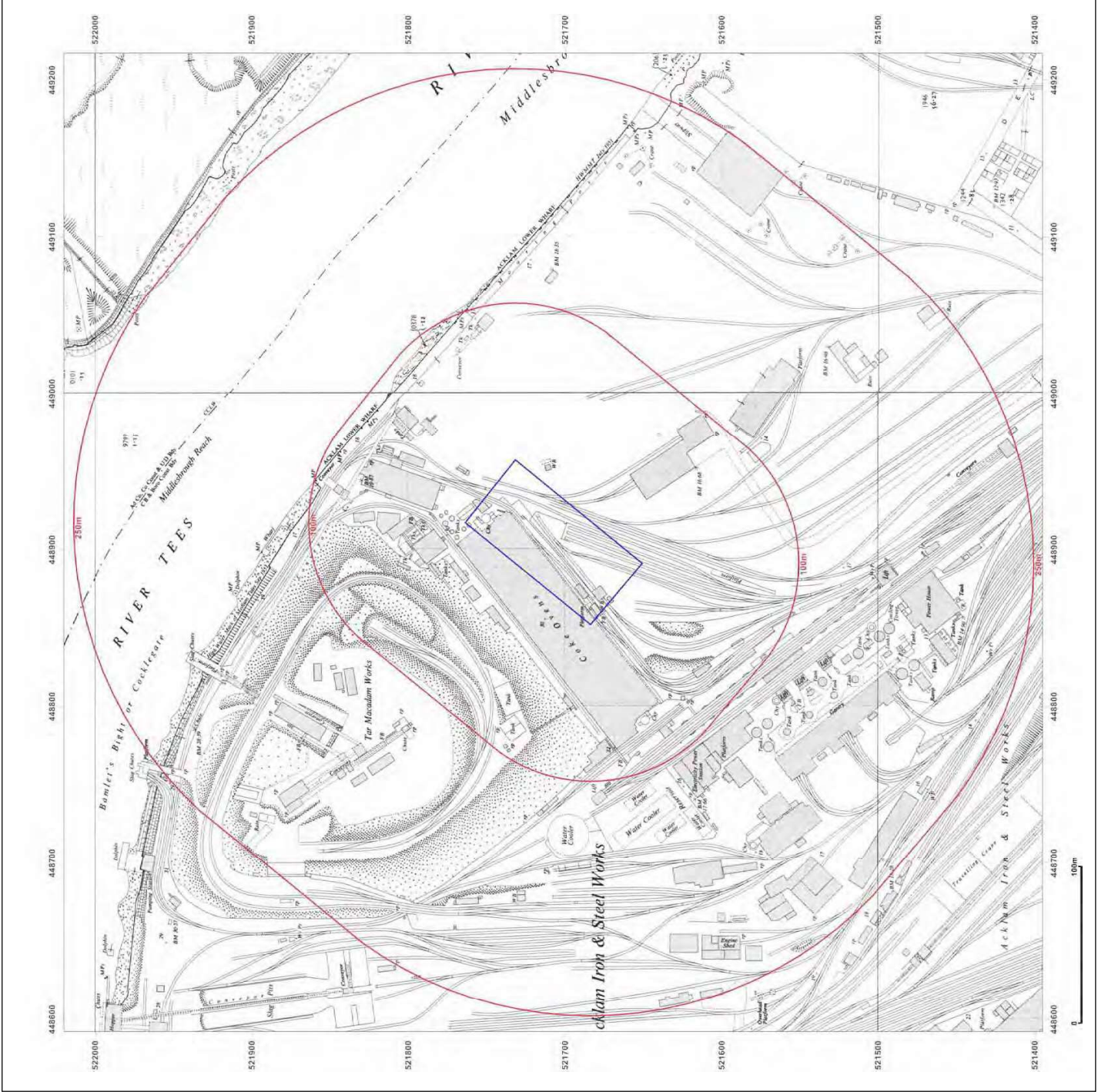


Produced by
 Groundsure Insights
 T: 08444 159000
 E: info@groundsure.com
 W: www.groundsure.com

© Crown copyright and database rights 2015 Ordnance Survey 100035207

Production date: 30 November 2015

To view map legend click here [Legend](#)



Site Details:

448903 521705

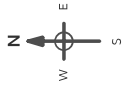
Client Ref: K239-WE2209GL
Report Ref: GS-2616443
Grid Ref: 448905; 521708

Map Name: National Grid

Map date: 1967

Scale: 1:2,500

Printed at: 1:2,500



Surveyed 1967
 Revised 1967
 Edition 1970
 Copyright 1970
 Levelled 1958

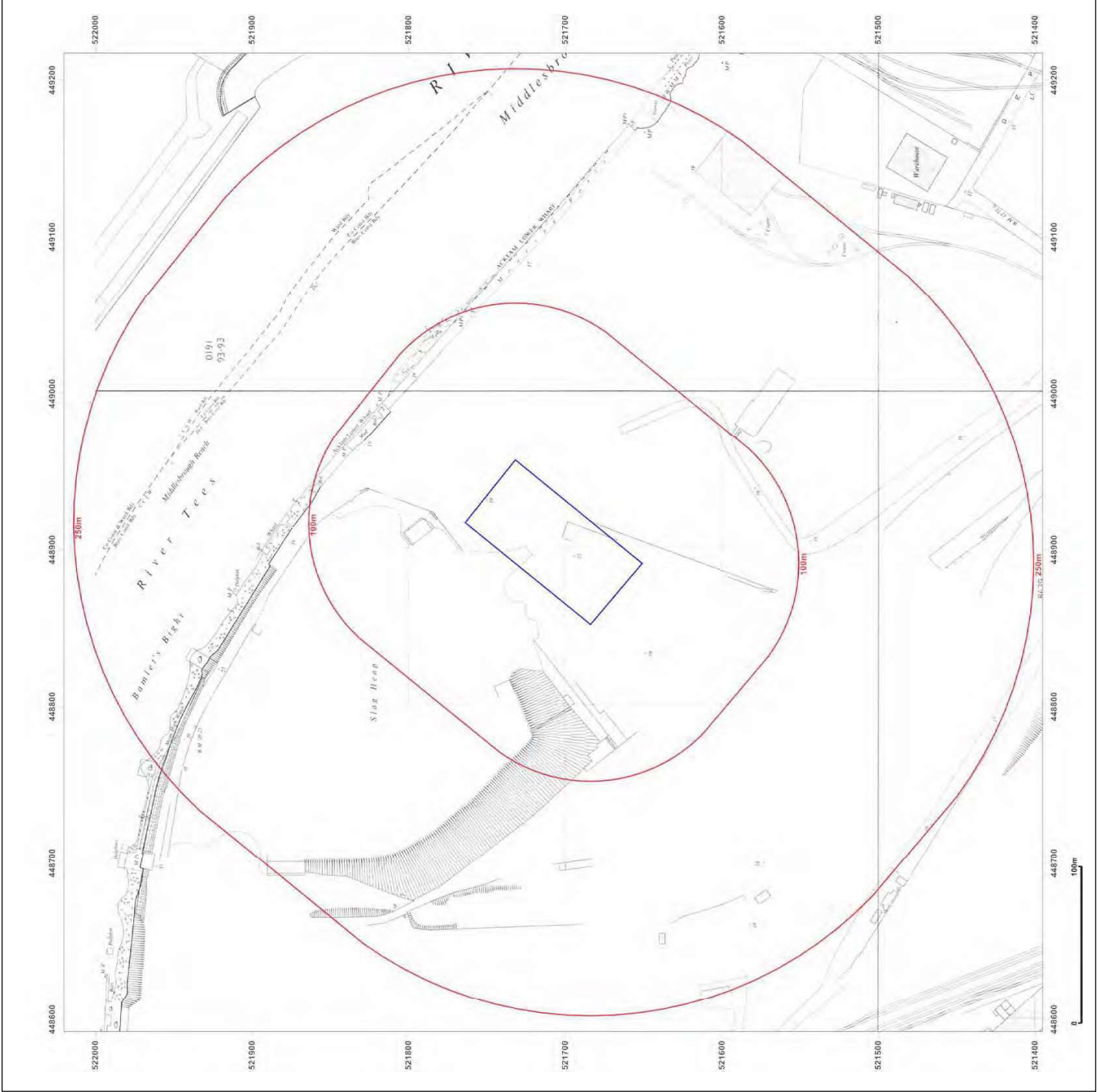


Produced by
 Groundsure Insights
 T: 08444 159000
 E: info@groundsure.com
 W: www.groundsure.com

© Crown copyright and database rights 2015 Ordnance Survey 100035207

Production date: 30 November 2015

To view map legend click here [Legend](#)



Site Details:

448903 521705

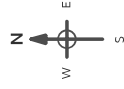
Client Ref: K239-WE2209GL
Report Ref: GS-2616443
Grid Ref: 448905, 521708

Map Name: National Grid

Map date: 1963-1968

Scale: 1:1,250

Printed at: 1:2,000



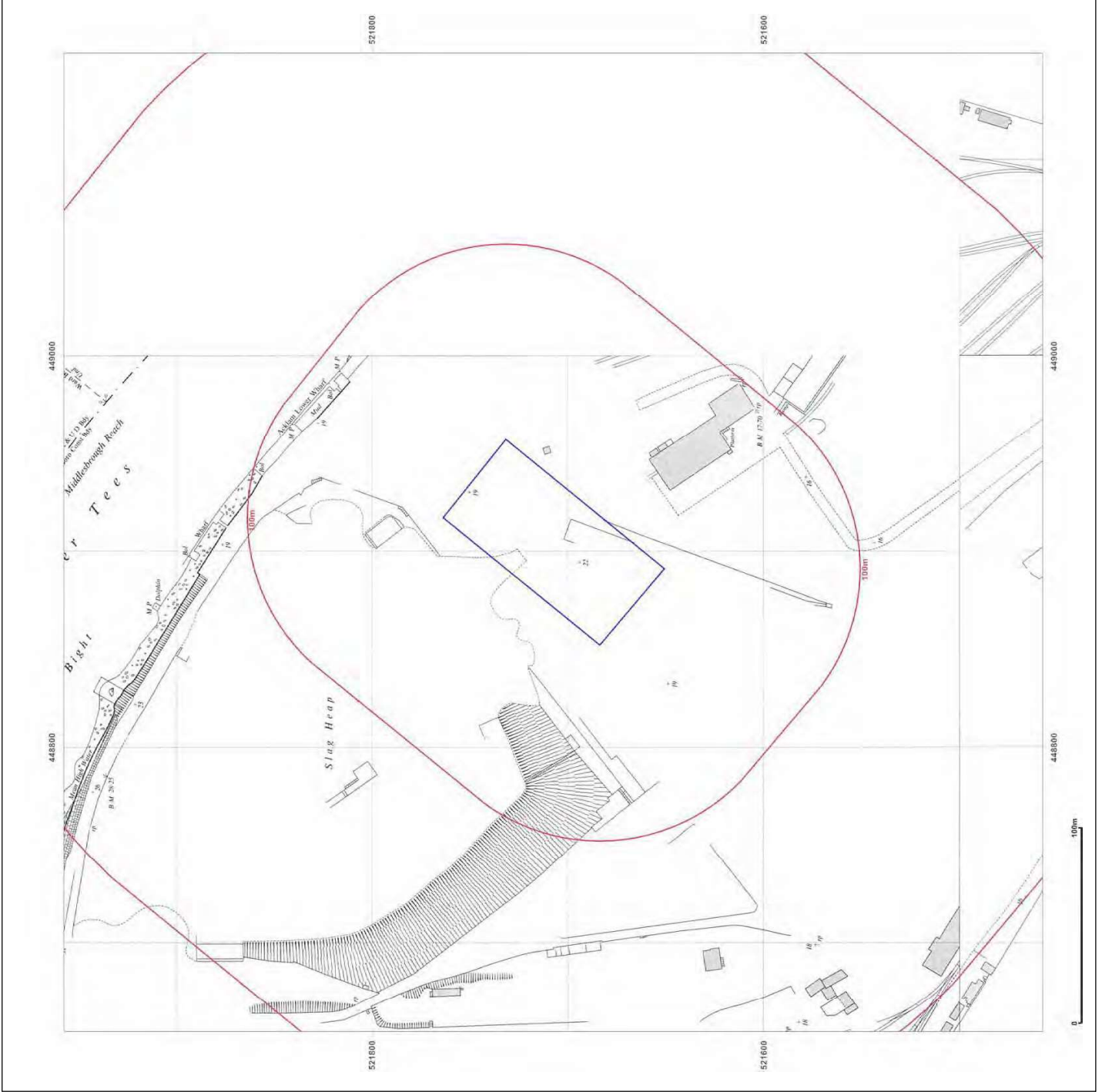
Surveyed 1951 Revised 1966 Edition N/A Copyright 1966 Levelled 1959	Surveyed 1951 Revised 1963 Edition N/A Copyright 1963 Levelled 1959
---	---



© Crown copyright and database rights 2015 Ordnance Survey 100035207

Production date: 30 November 2015

To view map legend click here [Legend](#)



Site Details:

448903 521705

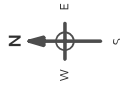
Client Ref: K239-WE2209GL
Report Ref: GS-2616443
Grid Ref: 448905, 521708

Map Name: National Grid

Map date: 1985-1989

Scale: 1:1,250

Printed at: 1:2,000



Surveyed 1959	Surveyed 1959
Revised 1987	Revised 1985
Edition N/A	Edition N/A
Copyright 1987	Copyright 1985
Levelled 1959	Levelled 1959

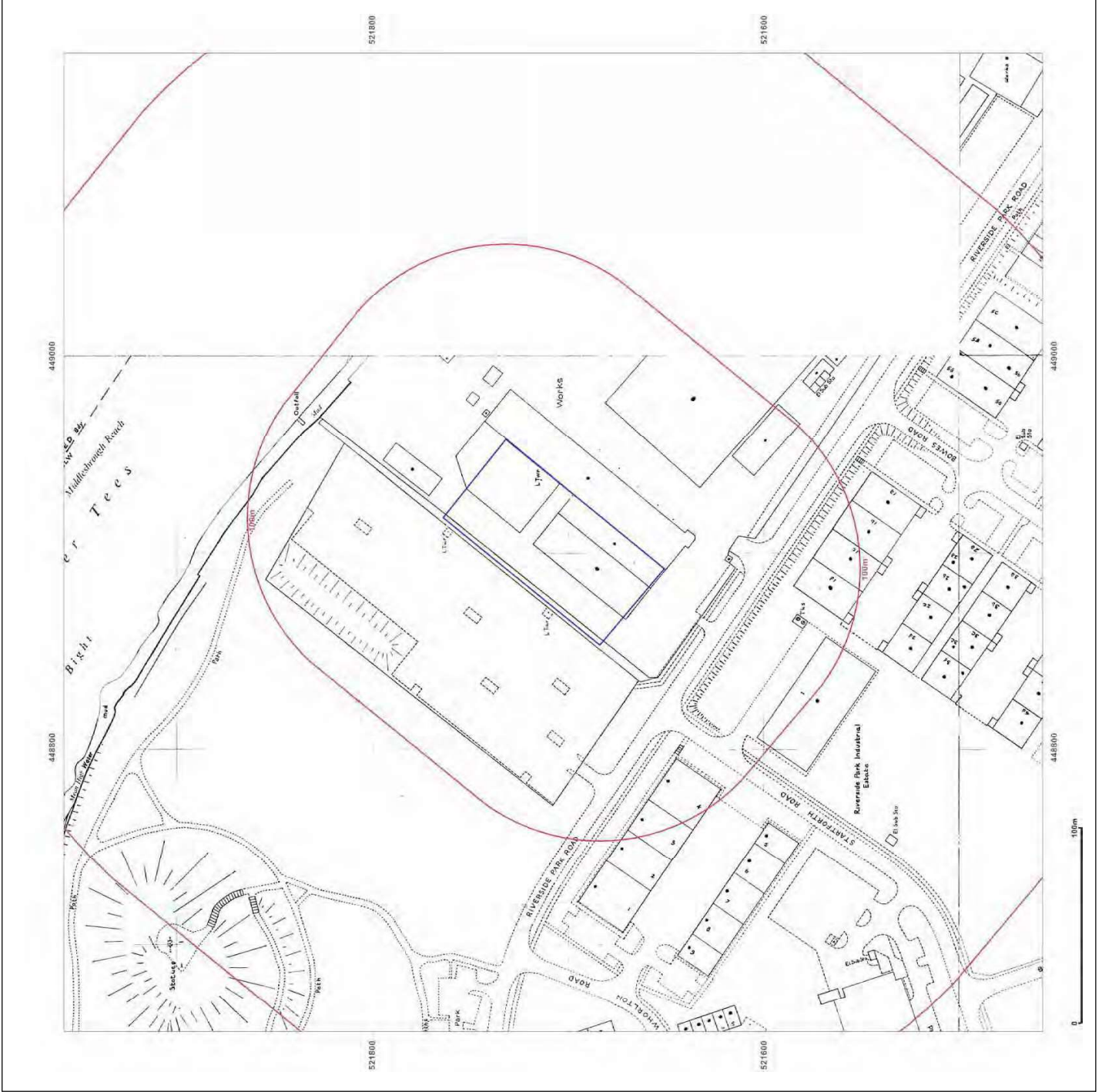


Produced by
 Groundsure Insights
 T: 08444 159000
 E: info@groundsure.com
 W: www.groundsure.com

© Crown copyright and database rights 2015 Ordnance Survey 100035207

Production date: 30 November 2015

To view map legend click here [Legend](#)



Site Details:
448903 521705

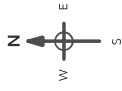
Client Ref: K239-WE2209GL
Report Ref: GS-2616443
Grid Ref: 448905, 521708

Map Name: National Grid

Map date: 1991-1992

Scale: 1:1,250

Printed at: 1:2,000



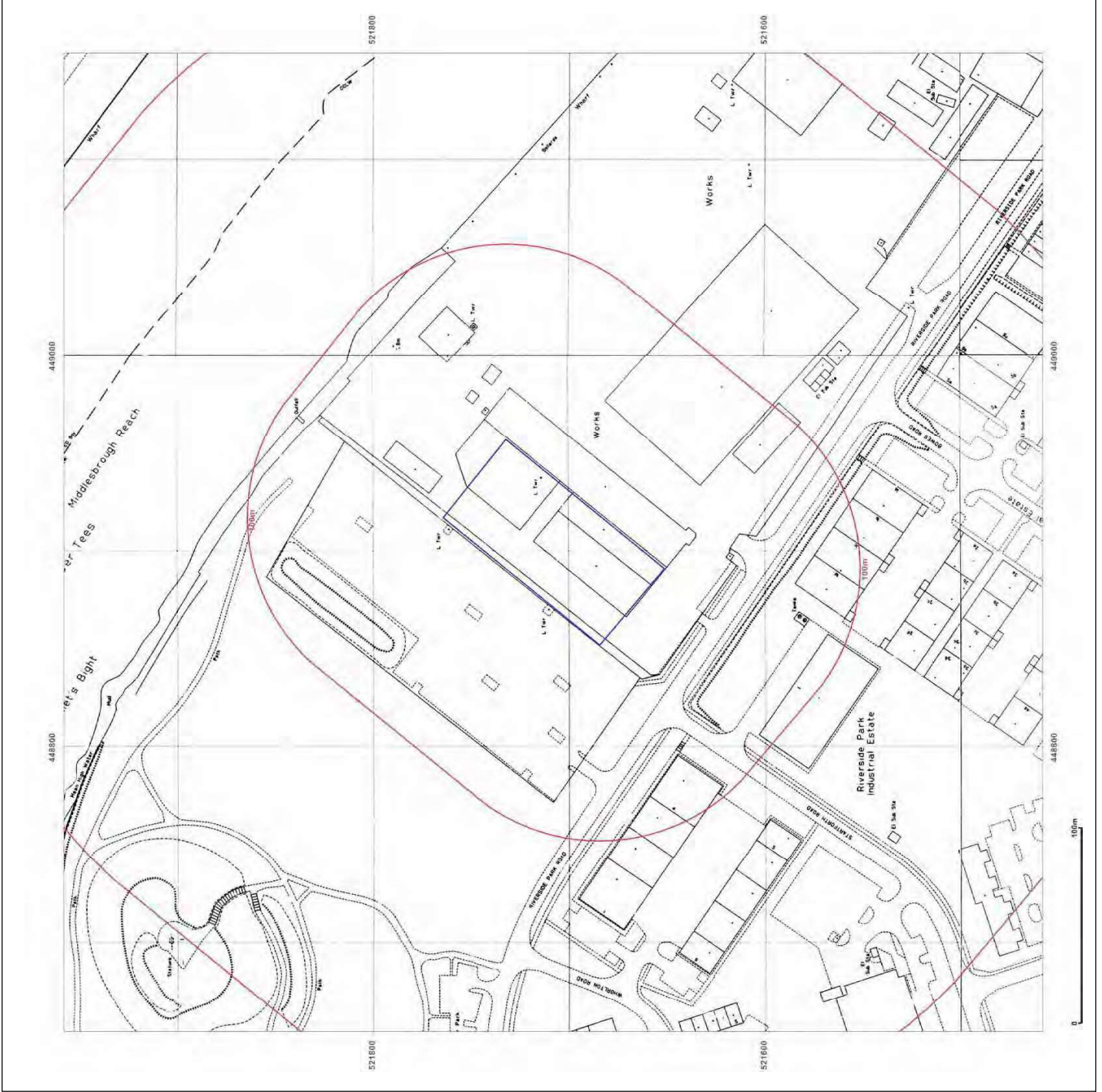
Surveyed N/A Revised N/A Edition N/A Copyright 1992 Levelled N/A	Surveyed N/A Revised N/A Edition N/A Copyright 1992 Levelled N/A
Surveyed 1951 Revised 1967 Edition N/A Copyright 1991 Levelled N/A	Surveyed 1951 Revised 1967 Edition N/A Copyright 1991 Levelled N/A



© Crown copyright and database rights 2015 Ordnance Survey 100035207

Production date: 30 November 2015

To view map legend click here [Legend](#)



Site Details:

448903 521705

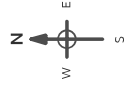
Client Ref: K239-WE2209GL
Report Ref: GS-2616443
Grid Ref: 448905, 521708

Map Name: National Grid

Map date: 1992-1994

Scale: 1:1,250

Printed at: 1:2,000



Surveyed N/A	Surveyed N/A
Revised N/A	Revised N/A
Edition N/A	Edition N/A
Copyright 1984	Copyright 1982
Levelled N/A	Levelled N/A

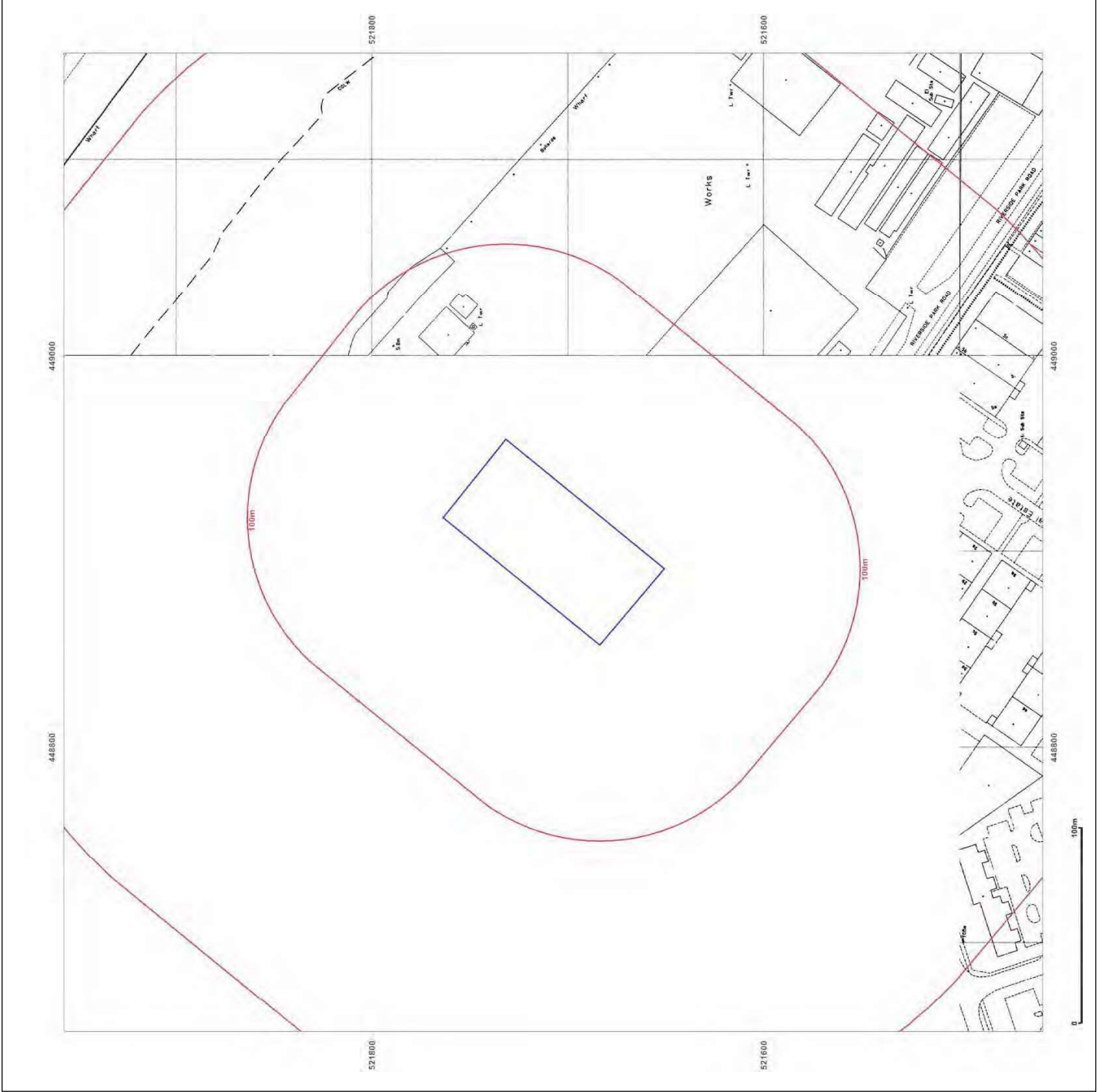


Produced by
 Groundsure Insights
 T: 08444 159000
 E: info@groundsure.com
 W: www.groundsure.com

© Crown copyright and database rights 2015 Ordnance Survey 100035207

Production date: 30 November 2015

To view map legend click here [Legend](#)



Site Details:
448903 521705

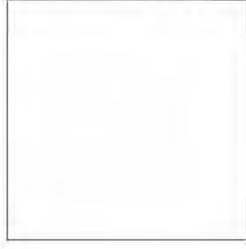
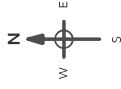
Client Ref: K239-WE2209GL
Report Ref: GS-2616443
Grid Ref: 448905; 521708

Map Name: County Series

Map date: 1856

Scale: 1:10,560

Printed at: 1:10,560



Surveyed 1856
Revised 1856
Edition N/A
Copyright N/A
Levelled N/A

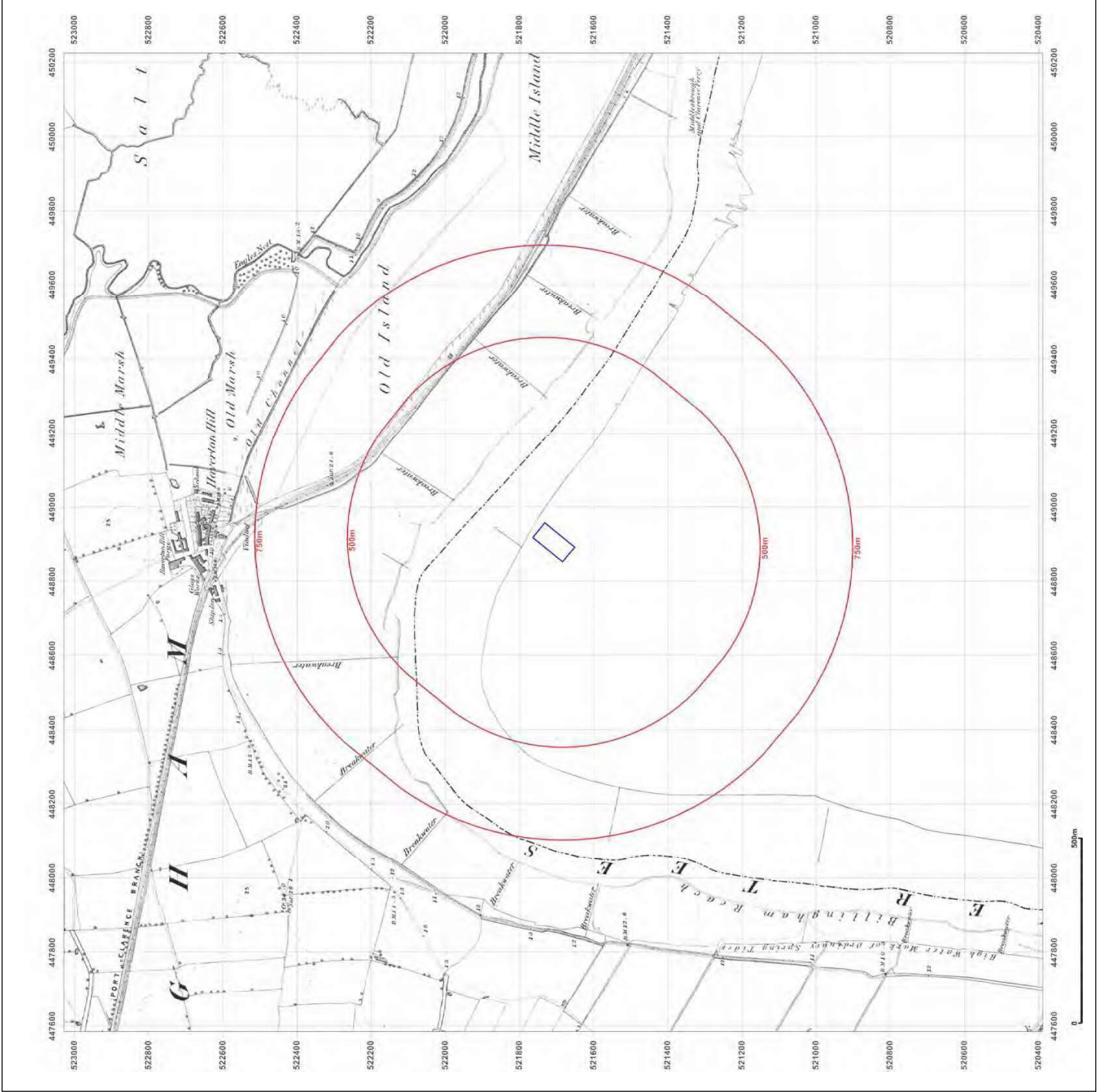


Produced by
Groundsure Insights
T: 08444 159000
E: info@groundsure.com
W: www.groundsure.com

© Crown copyright and database rights 2015 Ordnance Survey 100035207

Production date: 30 November 2015

To view map legend click here [Legend](#)



Site Details:

448903 521705

Client Ref: K239-WE2209GL
Report Ref: GS-2616443
Grid Ref: 448905, 521708

Map Name: County Series

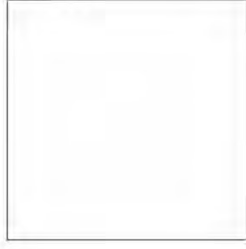
Map date: 1857

Scale: 1:10,560

Printed at: 1:10,560



Surveyed 1853
 Revised N/A
 Edition 1857
 Copyright N/A
 Levelled N/A

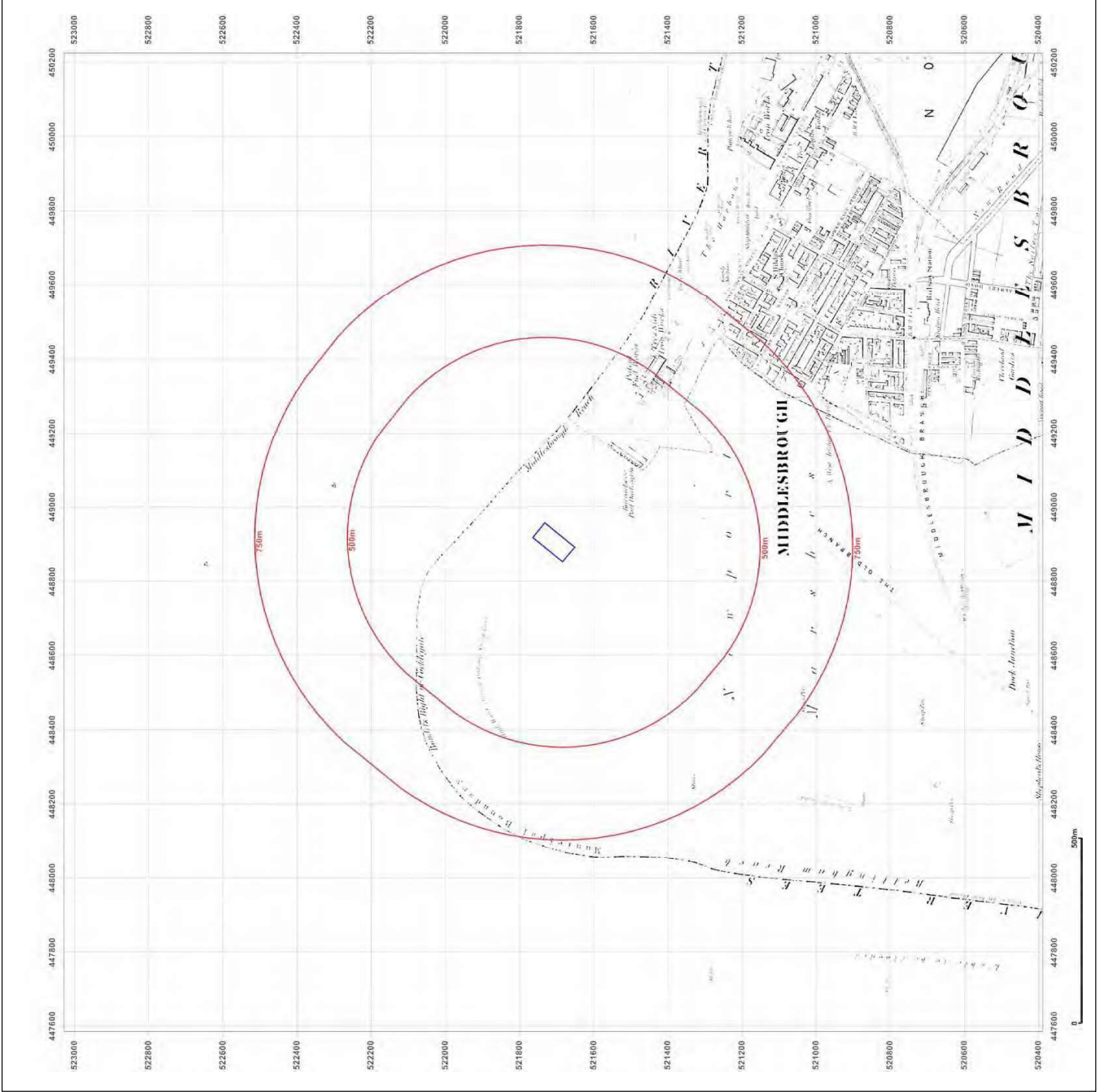


Produced by
 Groundsure Insights
 T: 08444 159000
 E: info@groundsure.com
 W: www.groundsure.com

© Crown copyright and database rights 2015 Ordnance Survey 100035207

Production date: 30 November 2015

To view map legend click here [Legend](#)



Site Details:
448903 521705

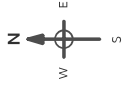
Client Ref: K239-WE2209GL
Report Ref: GS-2616443
Grid Ref: 448905; 521708

Map Name: County Series

Map date: 1893

Scale: 1:10,560

Printed at: 1:10,560



Surveyed 1883
Revised 1893
Edition N/A
Copyright N/A
Levelled N/A

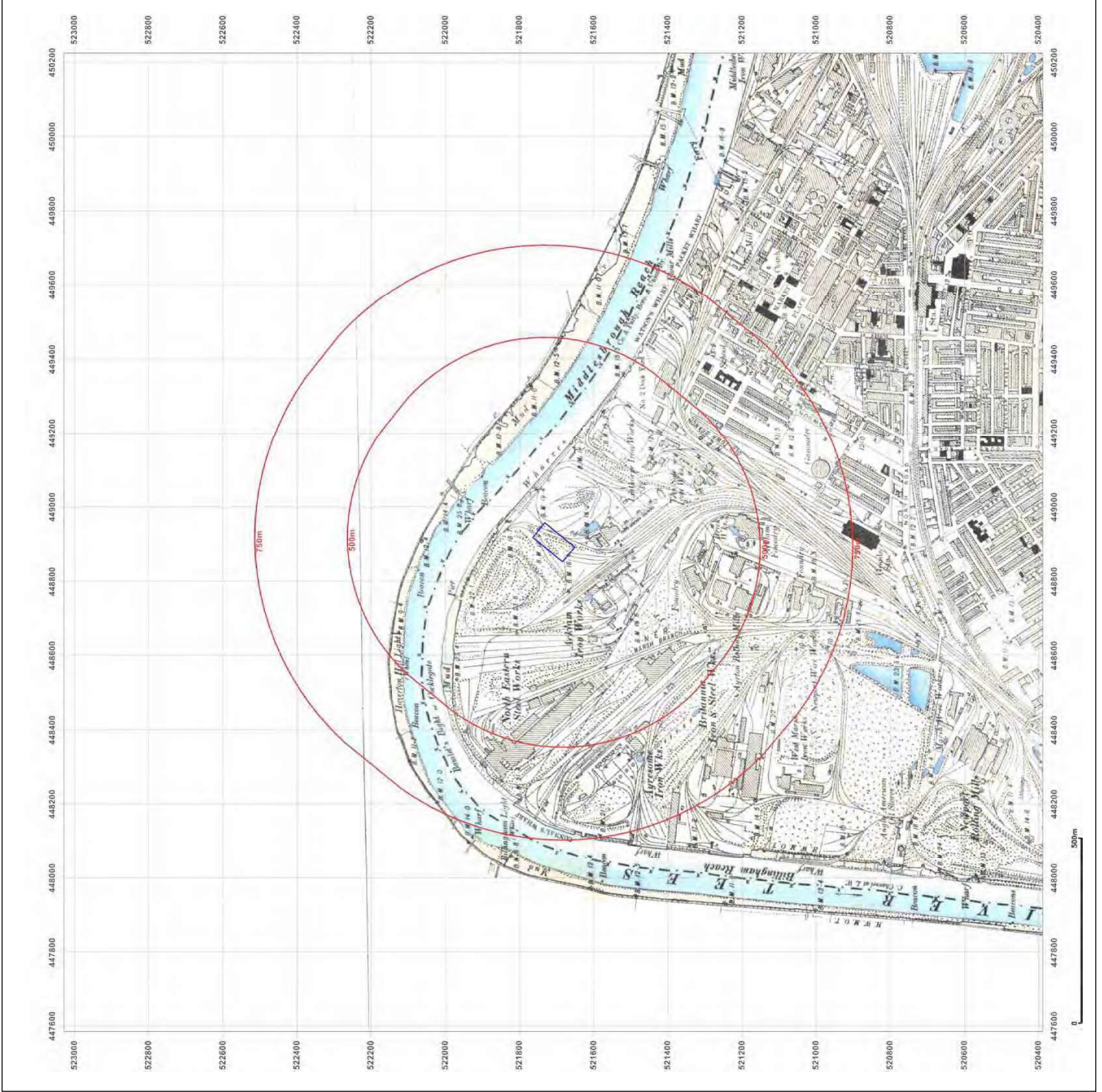


Produced by
Groundsure Insights
T: 08444 159000
E: info@groundsure.com
W: www.groundsure.com

© Crown copyright and database rights 2015 Ordnance Survey 100035207

Production date: 30 November 2015

To view map legend click here [Legend](#)



Site Details:
448903 521705

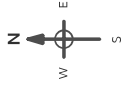
Client Ref: K239-WE2209GL
Report Ref: GS-2616443
Grid Ref: 448905; 521708

Map Name: County Series

Map date: 1897

Scale: 1:10,560

Printed at: 1:10,560



Surveyed 1856
Revised 1897
Edition N/A
Copyright N/A
Levelled N/A

Surveyed 1856
Revised 1897
Edition N/A
Copyright N/A
Levelled N/A

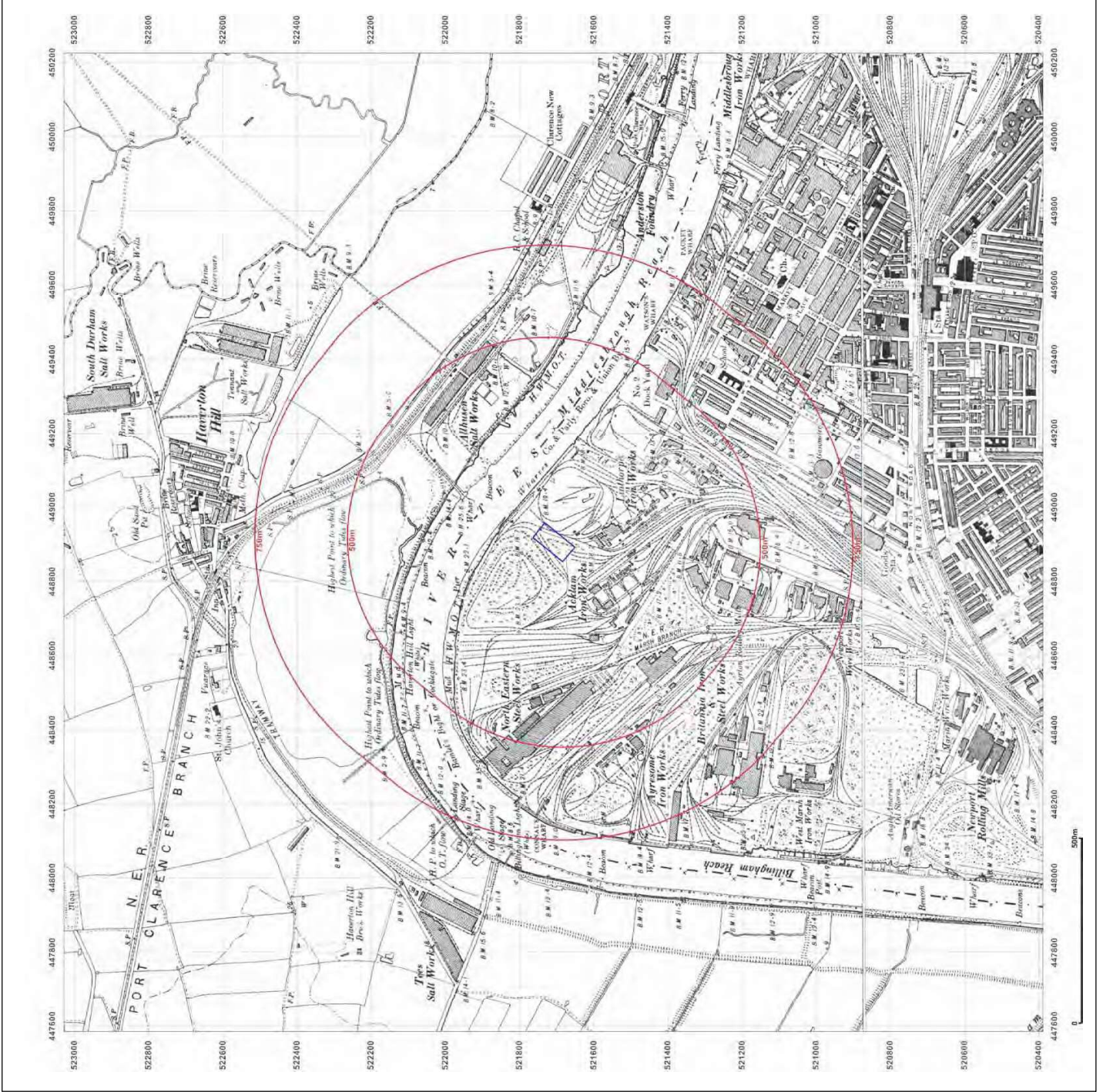


Produced by
Groundsure Insights
T: 08444 159000
E: info@groundsure.com
W: www.groundsure.com

© Crown copyright and database rights 2015 Ordnance Survey 100035207

Production date: 30 November 2015

To view map legend click here [Legend](#)



Site Details:

448903 521705

Client Ref: K239-WE2209GL
Report Ref: GS-2616443
Grid Ref: 448905; 521708

Map Name: County Series

Map date: 1913

Scale: 1:10,560

Printed at: 1:10,560



Surveyed 1863
 Revised 1913
 Edition N/A
 Copyright N/A
 Levelled N/A

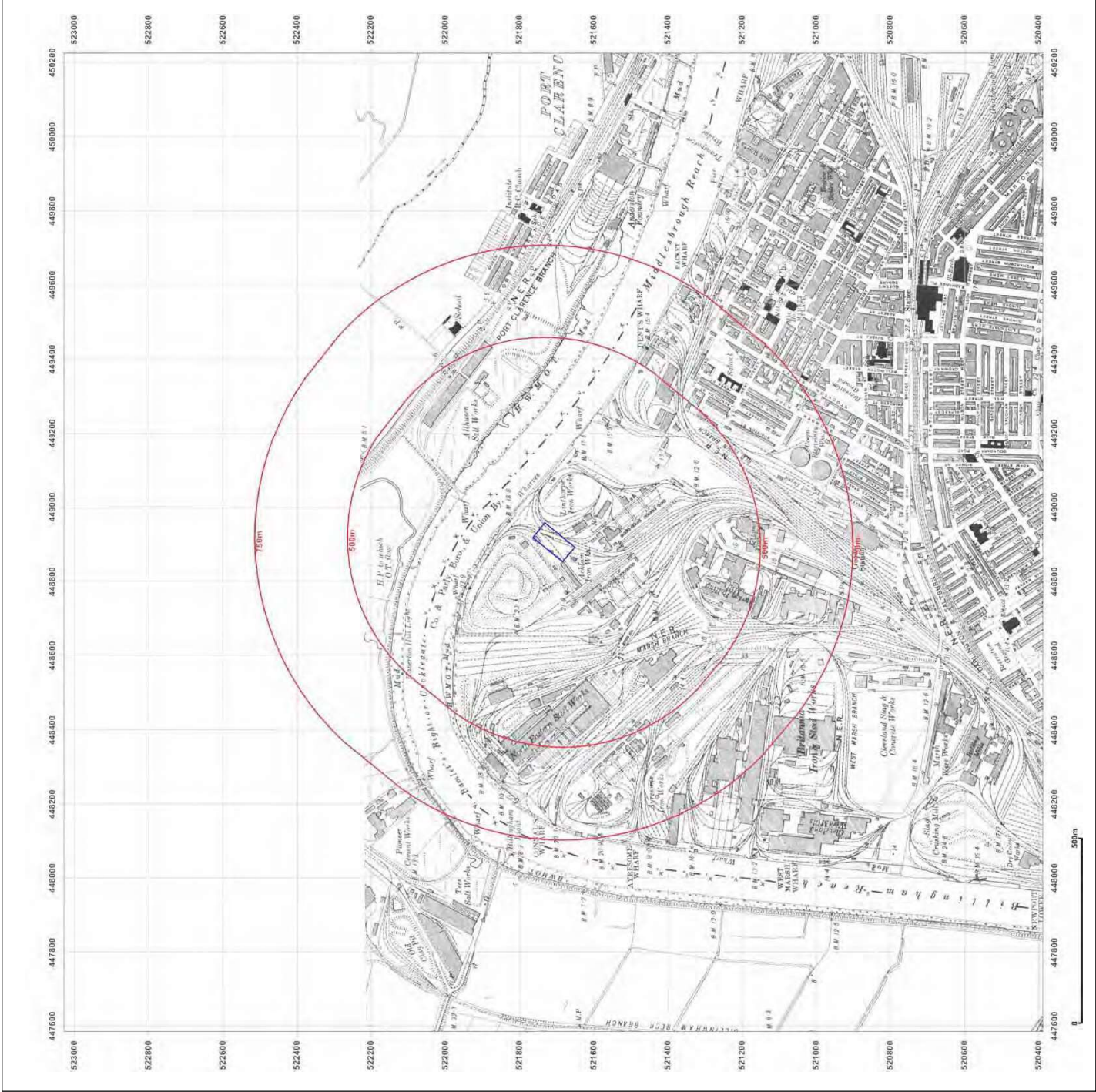


Produced by
 Groundsure Insights
 T: 08444 159000
 E: info@groundsure.com
 W: www.groundsure.com

© Crown copyright and database rights 2015 Ordnance Survey 100035207

Production date: 30 November 2015

To view map legend click here [Legend](#)



Site Details:
448903 521705

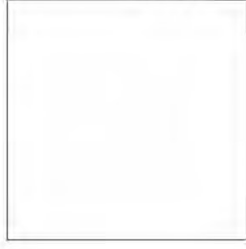
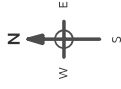
Client Ref: K239-WE2209GL
Report Ref: GS-2616443
Grid Ref: 448905; 521708

Map Name: County Series

Map date: 1923

Scale: 1:10,560

Printed at: 1:10,560



Surveyed 1856
Revised 1923
Edition N/A
Copyright N/A
Levelled N/A

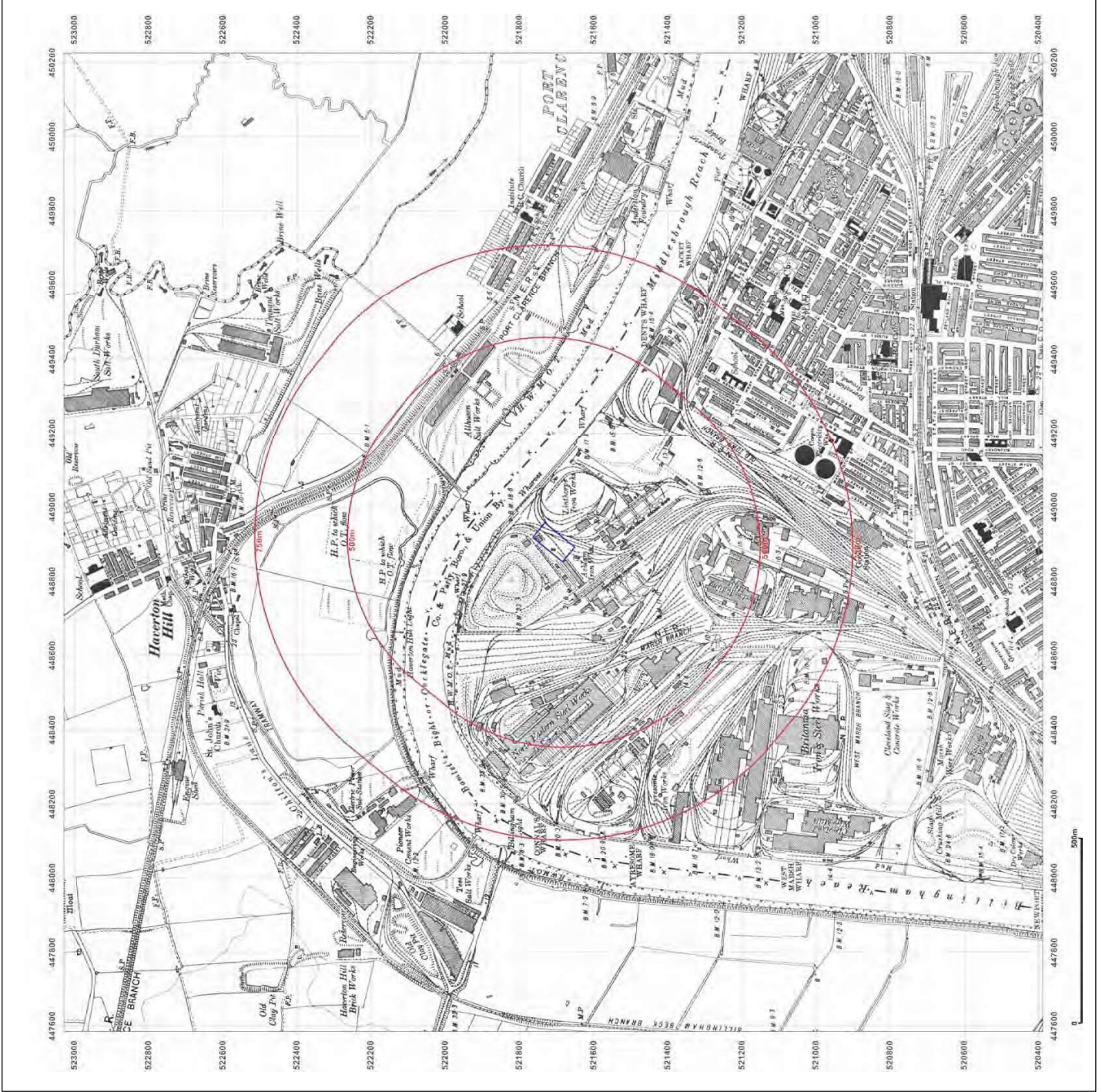


Produced by
Groundsure Insights
T: 08444 159000
E: info@groundsure.com
W: www.groundsure.com

© Crown copyright and database rights 2015 Ordnance Survey 100035207

Production date: 30 November 2015

To view map legend click here [Legend](#)



Site Details:
448903 521705

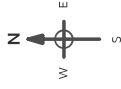
Client Ref: K239-WE2209GL
Report Ref: GS-2616443
Grid Ref: 448905; 521708

Map Name: County Series

Map date: 1938

Scale: 1:10,560

Printed at: 1:10,560



Surveyed 1856
Revised 1938
Edition N/A
Copyright N/A
Layelled N/A

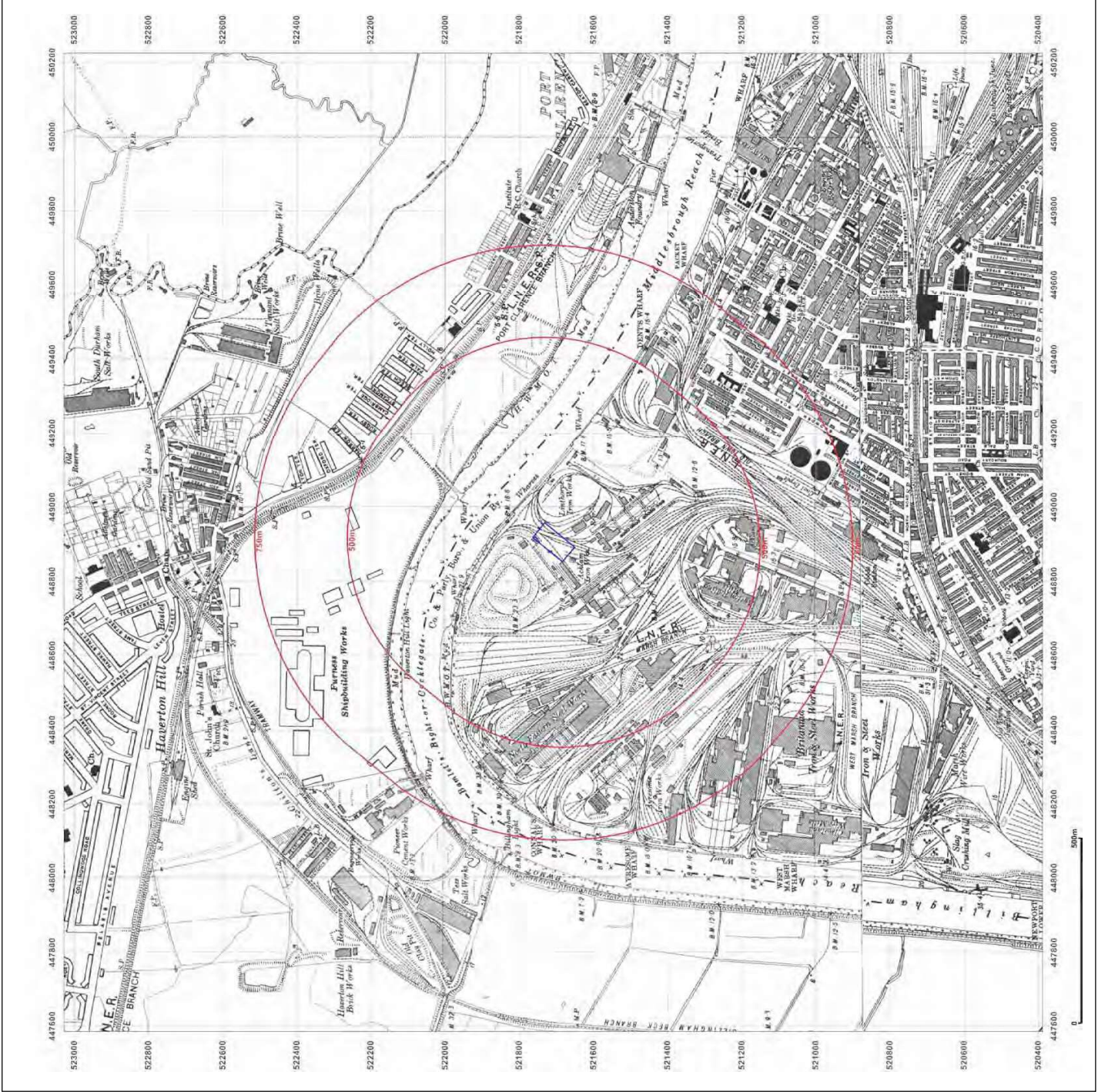
Surveyed 1853
Revised 1928
Edition 1938
Copyright N/A
Layelled N/A



© Crown copyright and database rights 2015 Ordnance Survey 100035207

Production date: 30 November 2015

To view map legend click here [Legend](#)



Site Details:
448903 521705

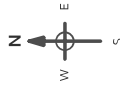
Client Ref: K239-WE2209GL
Report Ref: GS-2616443
Grid Ref: 448905; 521708

Map Name: Provisional

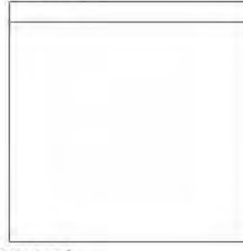
Map date: 1950-1955

Scale: 1:10,560

Printed at: 1:10,560



Surveyed 1950
Revised 1950
Edition N/A
Copyright N/A
Levelled N/A



Surveyed 1950
Revised 1955
Edition N/A
Copyright N/A
Levelled N/A

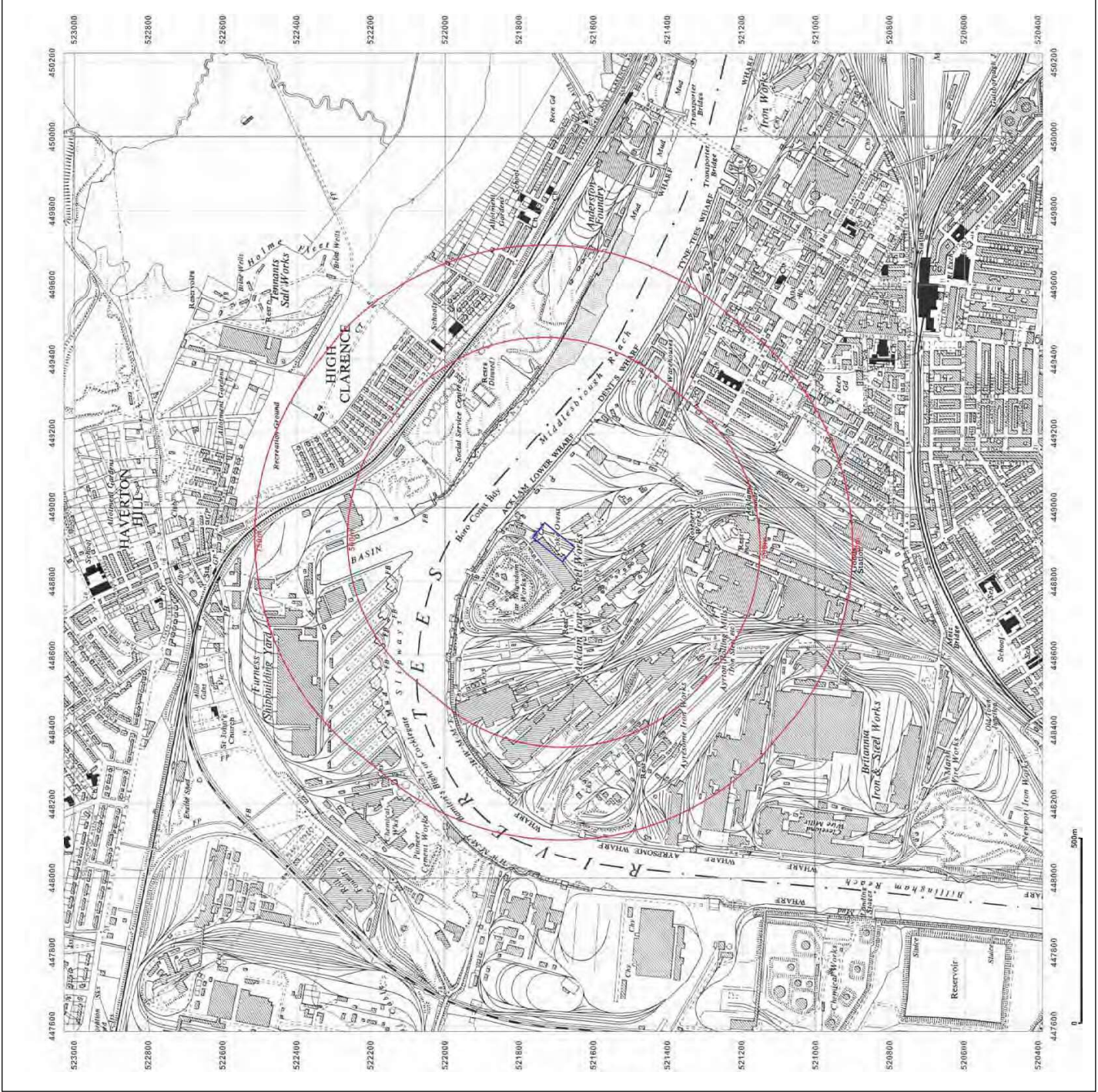


Produced by
Groundsure Insights
T: 08444 159000
E: info@groundsure.com
W: www.groundsure.com

© Crown copyright and database rights 2015 Ordnance Survey 100035207

Production date: 30 November 2015

To view map legend click here [Legend](#)



Site Details:
448903 521705

Client Ref: K239-WE2209GL
Report Ref: GS-2616443
Grid Ref: 448905; 521708

Map Name: National Grid

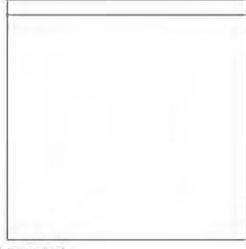
Map date: 1973

Scale: 1:10,000

Printed at: 1:10,000



Surveyed 1972
Revised 1973
Edition N/A
Copyright N/A
Levelled N/A

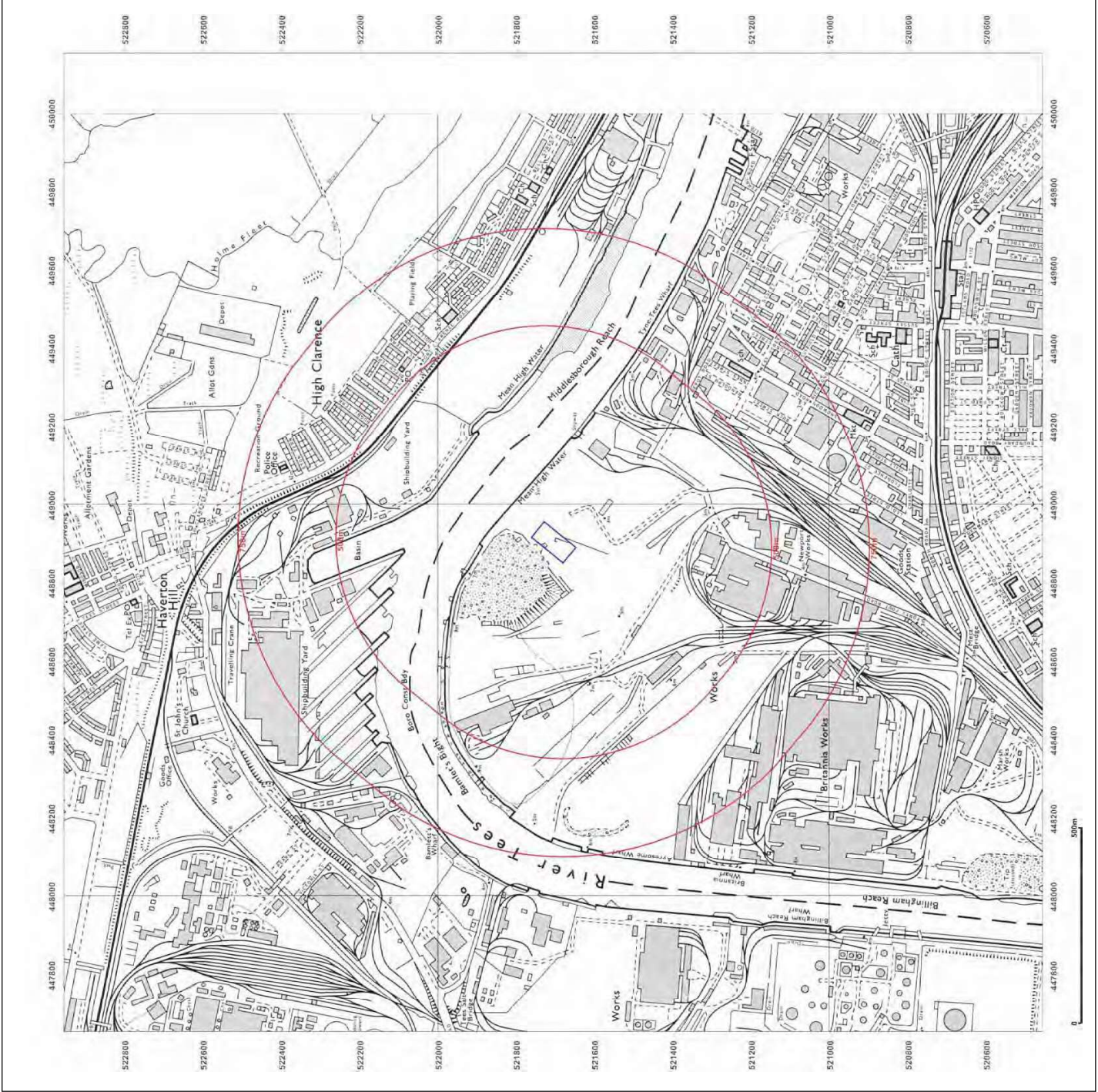


Produced by
Groundsure Insights
T: 08444 159000
E: info@groundsure.com
W: www.groundsure.com

© Crown copyright and database rights 2015 Ordnance Survey 100035207

Production date: 30 November 2015

To view map legend click here [Legend](#)



Site Details:
448903 521705

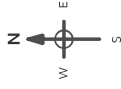
Client Ref: K239-WE2209GL
Report Ref: GS-2616443
Grid Ref: 448905; 521708

Map Name: National Grid

Map date: 1984-1988

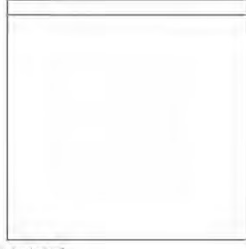
Scale: 1:10,000

Printed at: 1:10,000



Surveyed 1984
Revised 1984
Edition N/A
Copyright N/A
Levelled N/A

Surveyed 1986
Revised 1988
Edition N/A
Copyright N/A
Levelled N/A

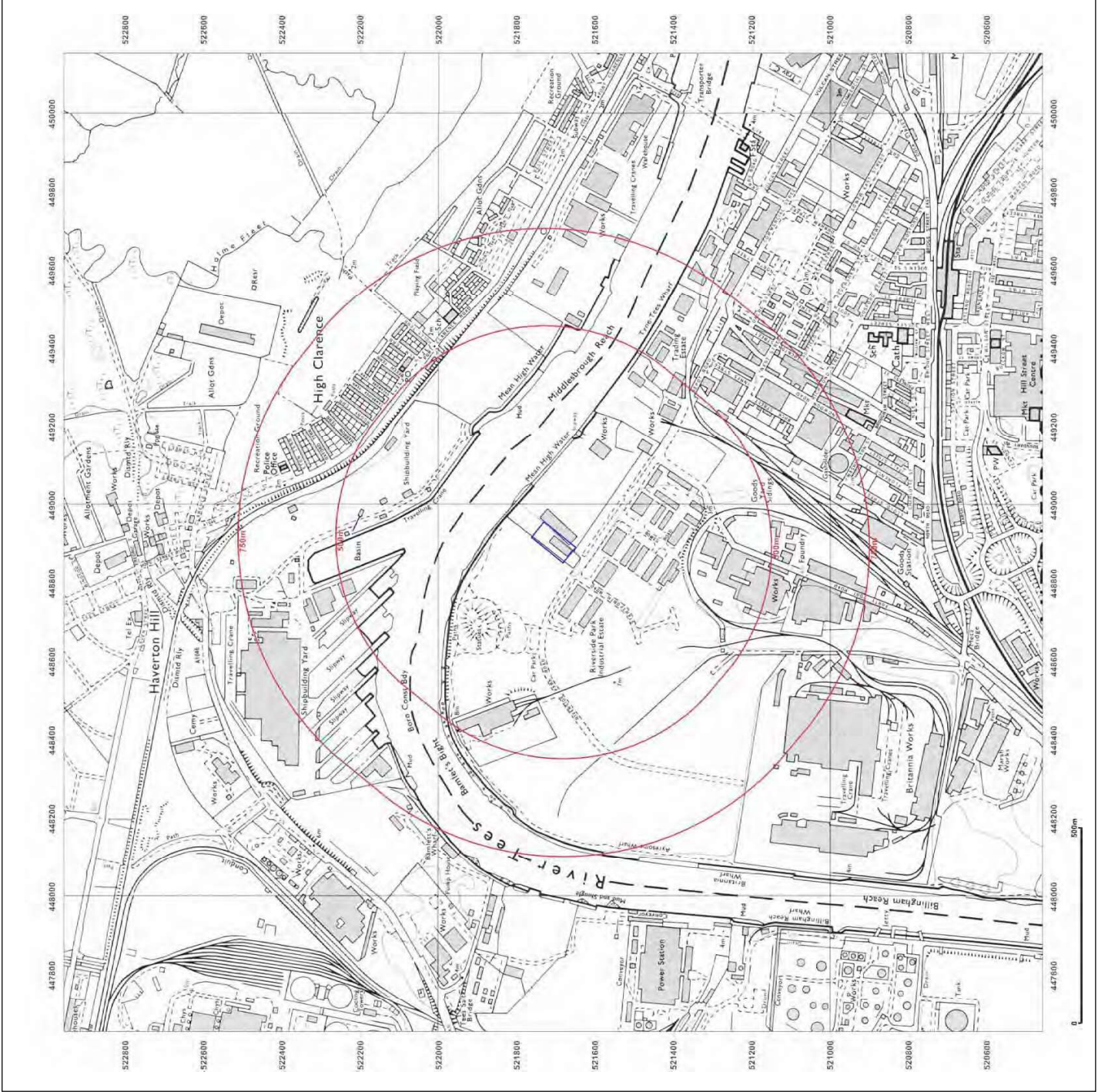


Produced by
Groundsure Insights
T: 08444 159000
E: info@groundsure.com
W: www.groundsure.com

© Crown copyright and database rights 2015 Ordnance Survey 100035207

Production date: 30 November 2015

To view map legend click here [Legend](#)



Site Details:

448903 521705

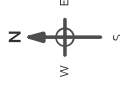
Client Ref: K239-WE2209GL
Report Ref: GS-2616443
Grid Ref: 448905; 521708

Map Name: National Grid

Map date: 1992

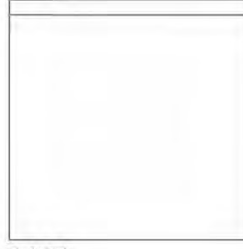
Scale: 1:10,000

Printed at: 1:10,000



Surveyed 1987
 Revised 1992
 Edition N/A
 Copyright N/A
 Levelled N/A

Surveyed 1986
 Revised 1992
 Edition N/A
 Copyright N/A
 Levelled N/A

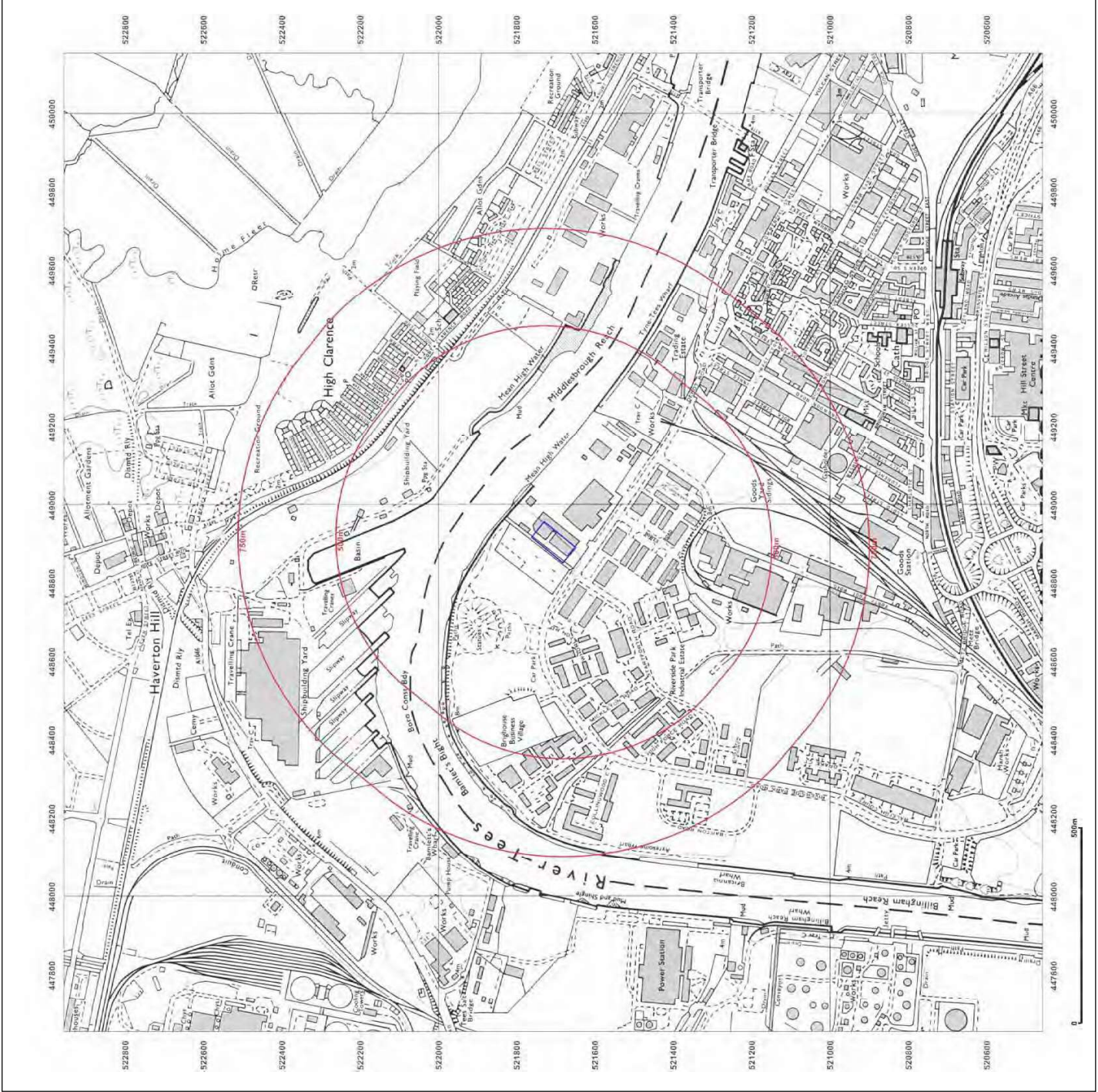


Produced by
 Groundsure Insights
 T: 08444 159000
 E: info@groundsure.com
 W: www.groundsure.com

© Crown copyright and database rights 2015 Ordnance Survey 100035207

Production date: 30 November 2015

To view map legend click here [Legend](#)



Site Details:
448903 521705

Client Ref: K239-WE2209GL
Report Ref: GS-2616443
Grid Ref: 448905; 521708

Map Name: 1:10,000 Raster

Map date: 2002

Scale: 1:10,000

Printed at: 1:10,000

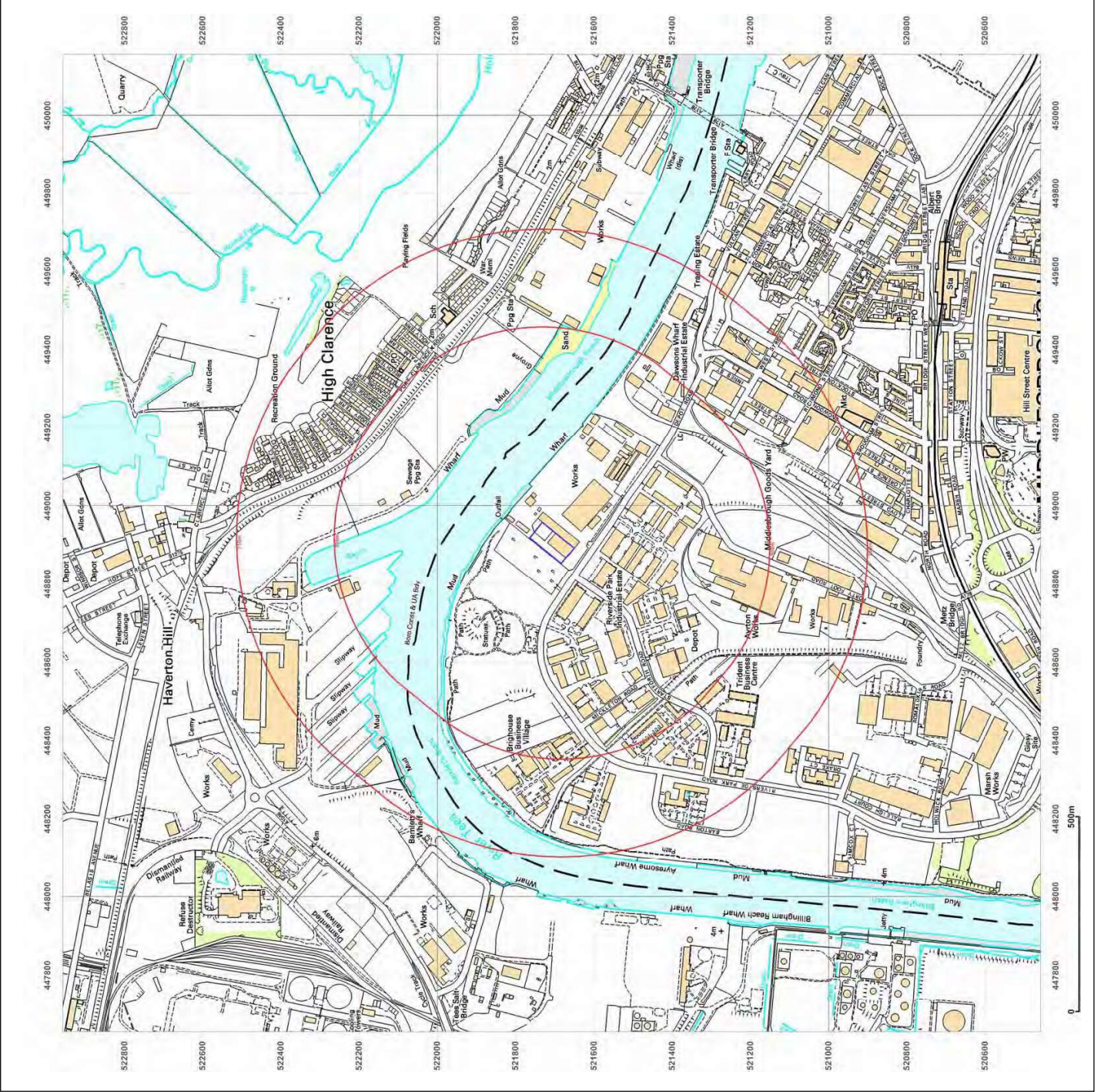


Produced by
Groundsure Insights
T: 08444 159000
E: info@groundsure.com
W: www.groundsure.com

© Crown copyright and database rights 2015 Ordnance Survey 100035207

Production date: 30 November 2015

To view map legend click here [Legend](#)



Site Details:
448903 521705

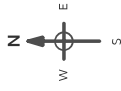
Client Ref: K239-WE2209GL
Report Ref: GS-2616443
Grid Ref: 448905; 521708

Map Name: National Grid

Map date: 2010

Scale: 1:10,000

Printed at: 1:10,000

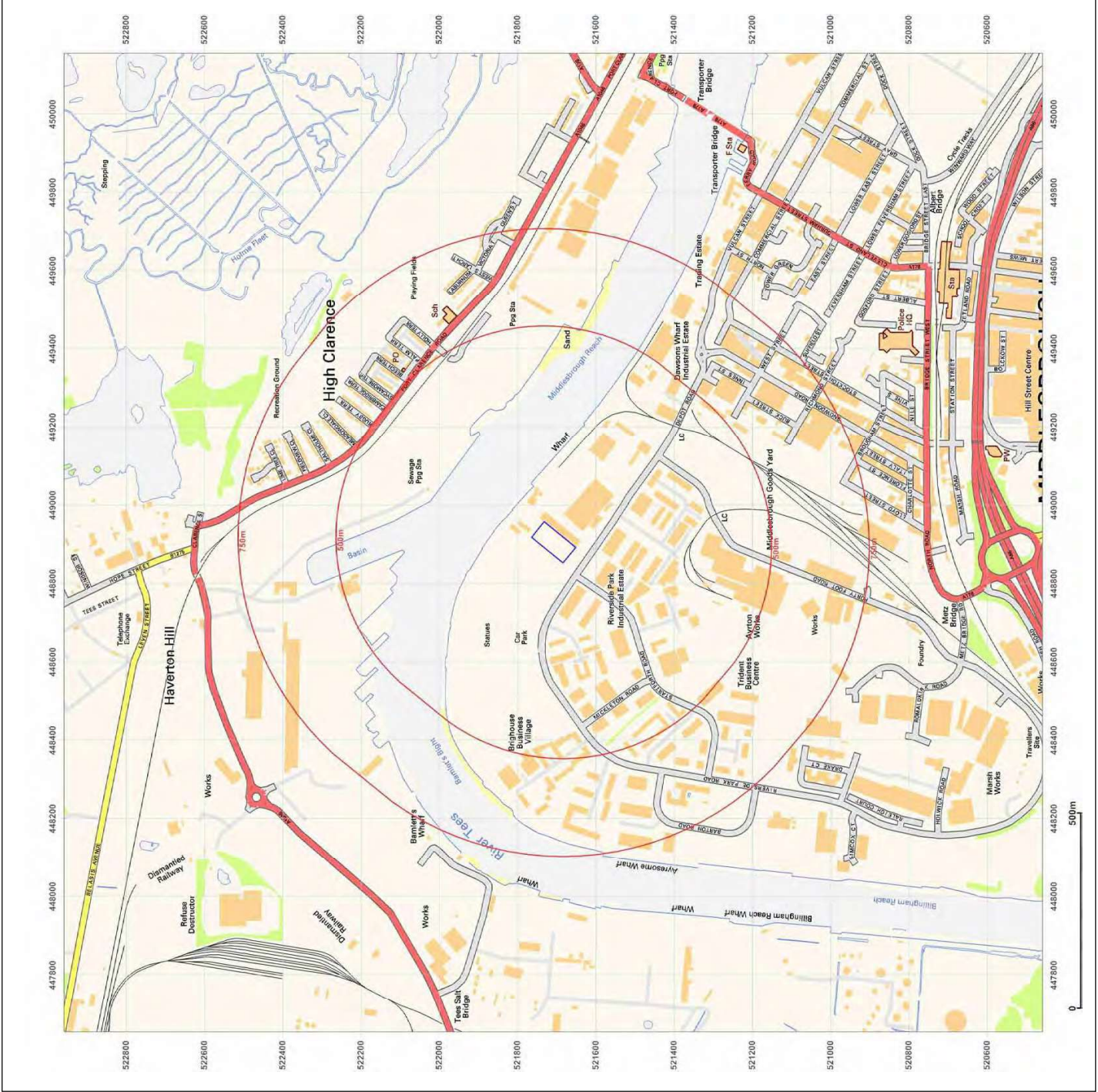


Produced by
Groundsure Insights
T: 08444 159000
E: info@groundsure.com
W: www.groundsure.com

© Crown copyright and database rights 2015 Ordnance Survey 100035207

Production date: 30 November 2015

To view map legend click here [Legend](#)



Site Details:
448903 521705

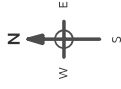
Client Ref: K239-WE2209GL
Report Ref: GS-2616443
Grid Ref: 448905; 521708

Map Name: National Grid

Map date: 2014

Scale: 1:10,000

Printed at: 1:10,000



Produced by
Groundsure Insights
T: 08444 159000
E: info@groundsure.com
W: www.groundsure.com

© Crown copyright and database rights 2015 Ordnance Survey 100035207

Production date: 30 November 2015

To view map legend click here [Legend](#)

