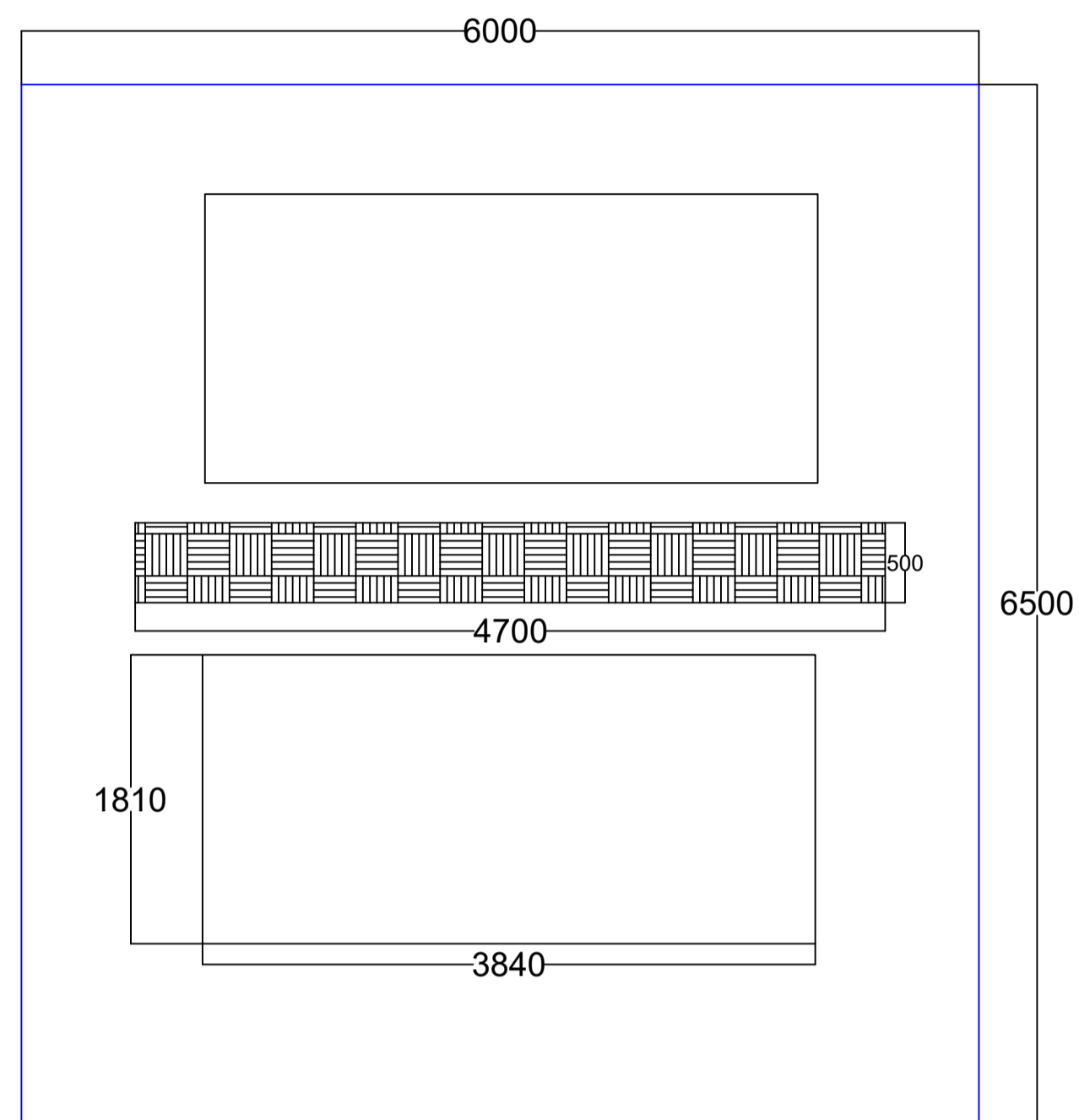
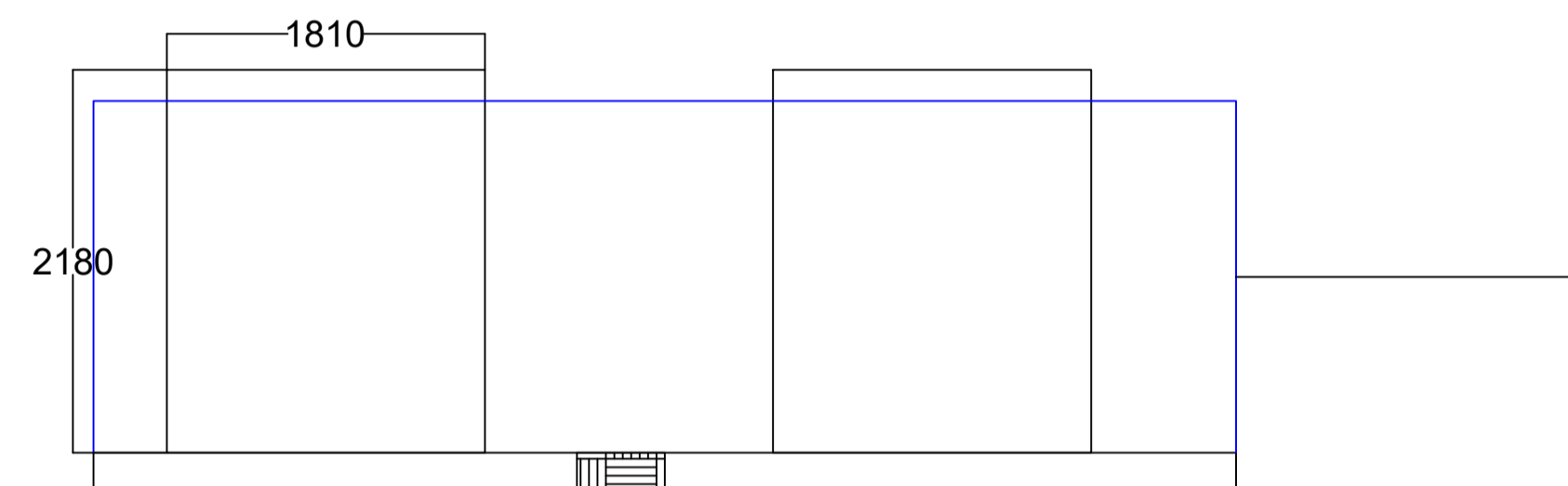


ASBESTOS STORAGE INFORMATION

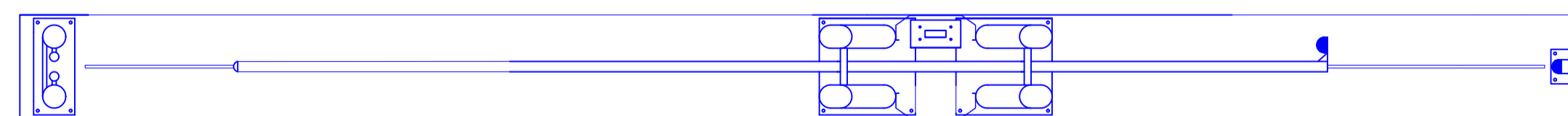
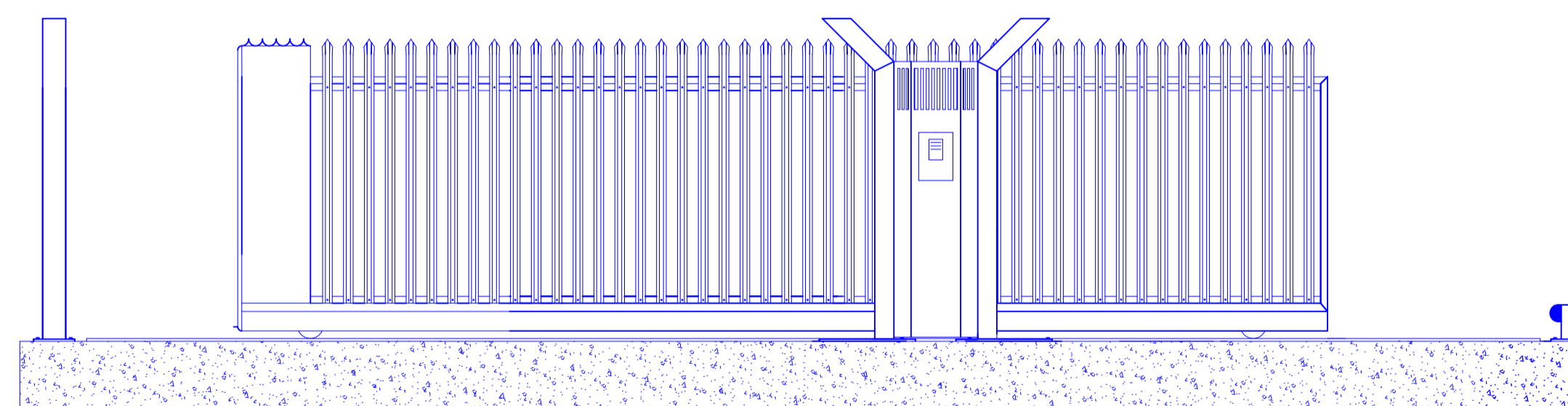
- A 6.5M X 6.0M FULLY BUNDED COMPOUND WITH INTEGRAL SUMP TO CONTAIN 2 X 12.2 CU METRE ENCLOSED SEALED CONTAINERS RING FENCED BY 2M HIGH PALISADE FENCING AND GATES FOR THE PURPOSE OF RECEIVING AND STORING ASBESTOS WASTE MATERIALS.
- THE DIMENSIONS OF EACH 12.2 CU METRE CONTAINER IS 3.84M IN LENGTH, 2.18 METRES HIGH AND 1.81M IN WIDTH BOTH FABRICATED IN STEEL AND BLUE IN COLOUR.
- A SUBMERSIBLE PUMP WILL BE SITUATED WITHIN THE SUMP COUPLED TO AN INDUSTRY STANDARD FILTER SYSTEM IDENTICAL TO A DECONTAMINATION UNIT SET UP



TOP VIEW



FRONT VIEW



PALLISIDE FENCING

| | | | | |
|-----------|---------------|--|------|-------|
| Revisions | H | | | |
| | G | | | |
| | F | | | |
| | E | | | |
| | D | | | |
| | C | | | |
| B | | | | |
| A | | | | |
| O | INITIAL ISSUE | | DATE | DRAWN |

Recycle it global
 HEAD OFFICE:
 Chenoweths BUbusiness Park
 Ruan Highlanes
 Truro
 TR2 5JT
 Telephone 0208 058 2335
 E-mail : info@rig-uk.com



| | | | | |
|----------------------------|------------|---|------------------|-------------------------|
| Designed by Sanad Anwer | Checked by | Approved by - date Oscar Milverton Gatta | Date 21-12-23 | Scale 1:40 |
| Asbestos Storage | | | | |
| | | | A1 | Edition Sheet 1/4 |