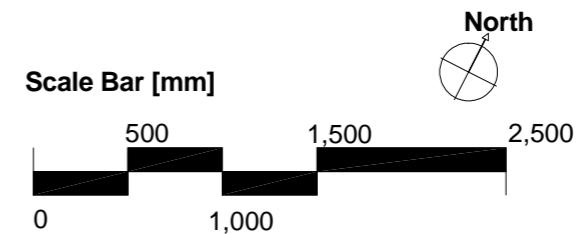
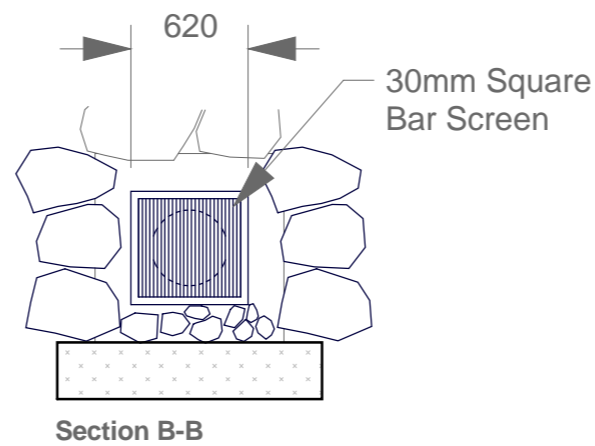
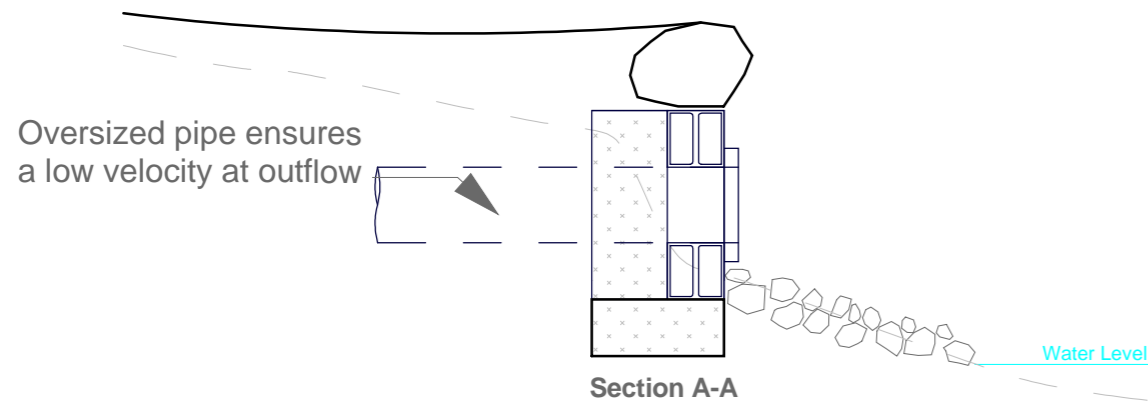
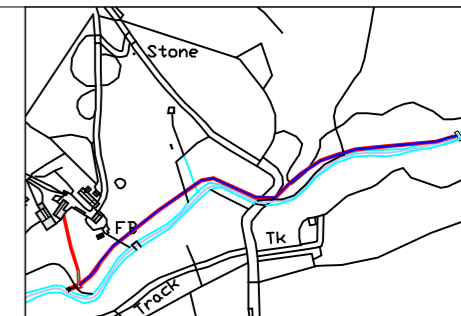


- Notes**
- Tailrace consists of buried pipe exiting turbine hut below ground level.
  - Outfall structure supports a fish screen with maximum spacing of 30mm.
  - Structure to be faced with local stone.
  - Scree to be formed with locally sourced boulders to prevent erosion.
- Tolerances**
- Exact dimensions and layout may vary by 0.25m

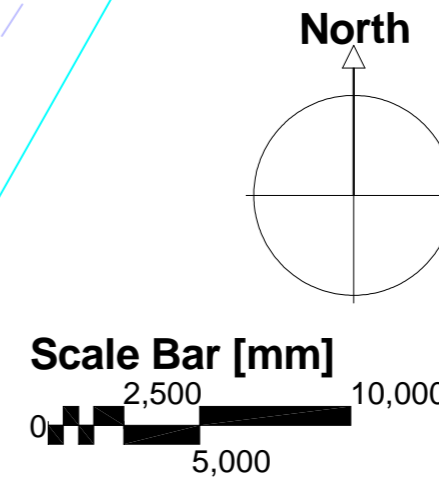
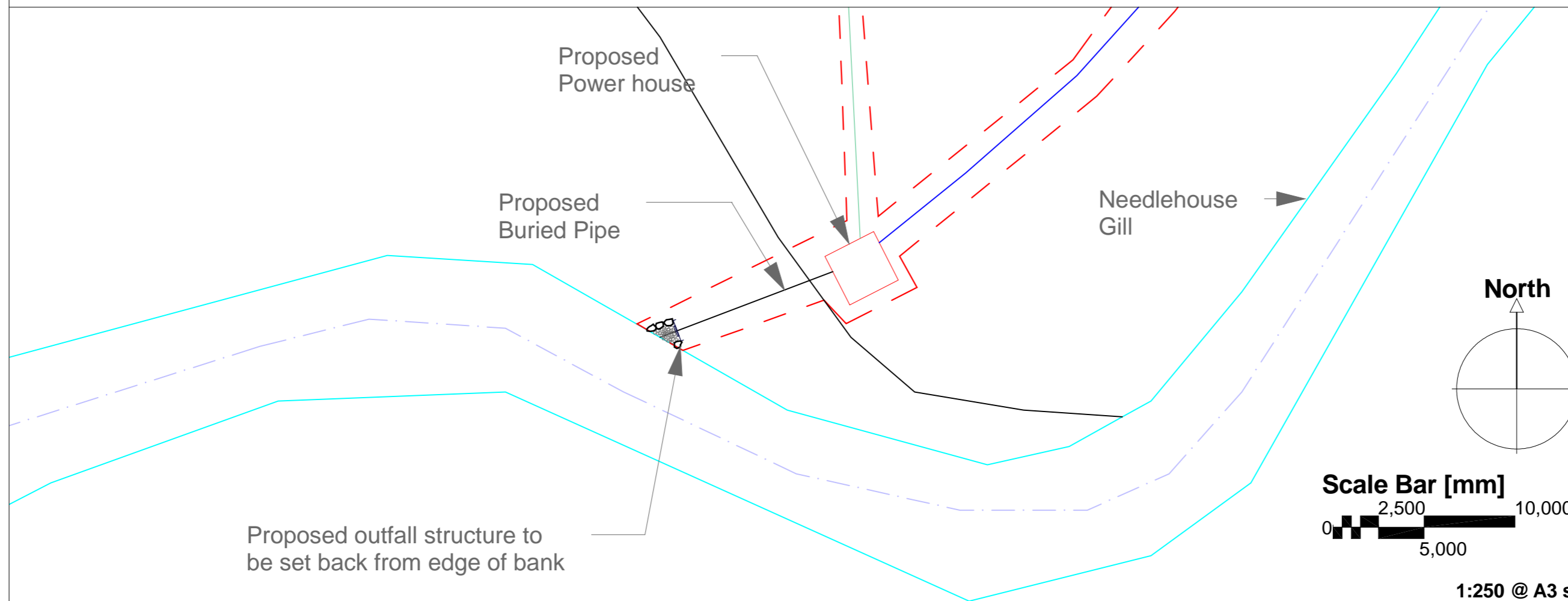


1:40 @ A3 size



This drawing has been prepared solely to obtain consent from the Environment Agency and Planning Consent from the YDNP / EDC. The scale(s) of the drawing are as noted. All dimensions and levels must be checked on site before work is started. Equipment sizes are indicative. © f-ind, 2021

- Key**
- Intake
  - Site Boundary
  - Pipeline
  - Outflow
  - Power Cable



1:250 @ A3 size

Rev.	Comments	Date
A	EA Consenting	25.03.2022

Project Name  
**Needlehouse Hydro Scheme**

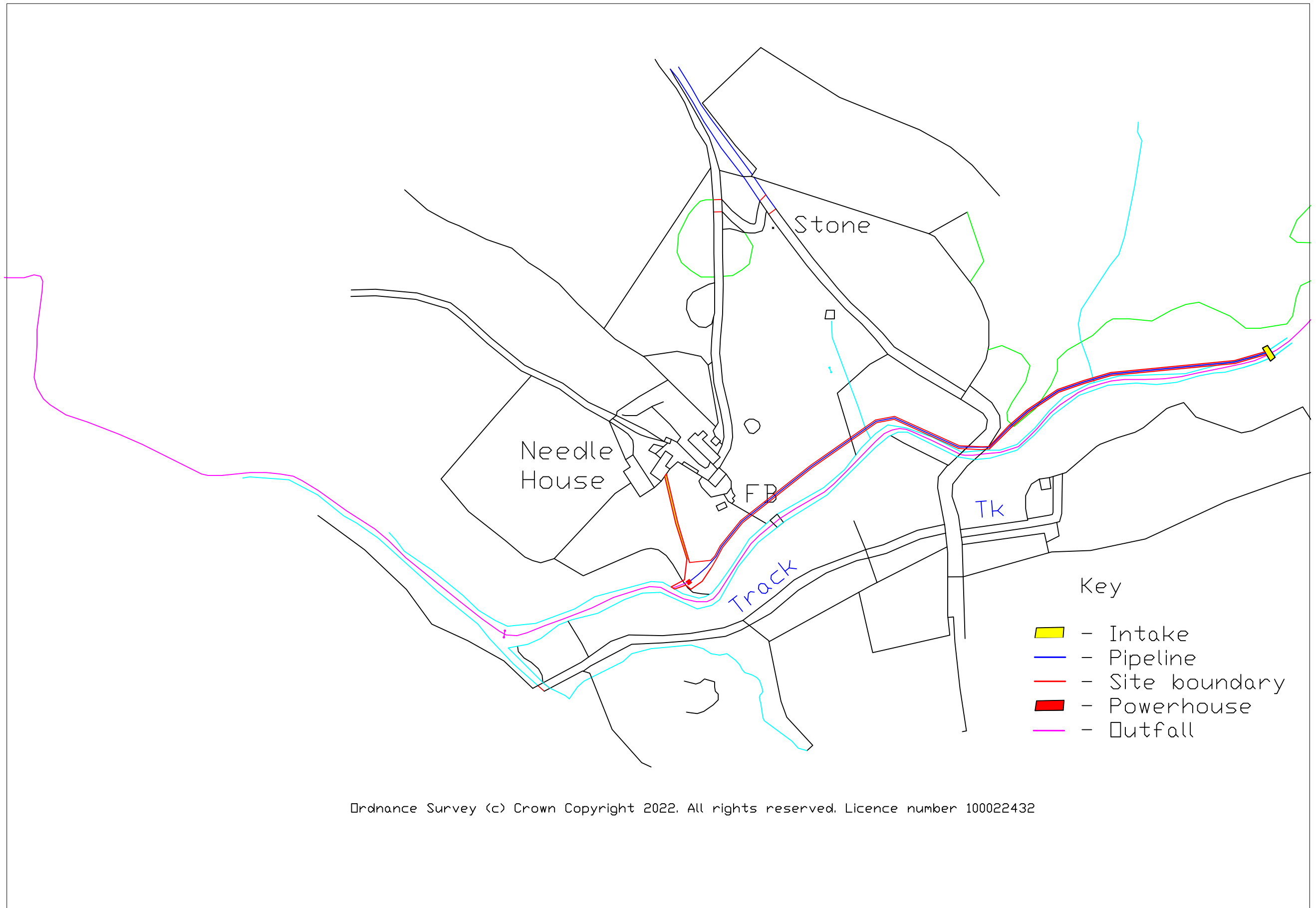
Title  
**Outflow GA Drawing**

Drawing Number  
**NHE - NHH - 002 - PL**

Date  
**25 March 2022**

Scale As Stated @ A3 size

**f-ind** Needlehouse Cottage,  
Fell End,  
Ravenstonedale,  
CA17 4LN  
+44 [0] 7981 948 627

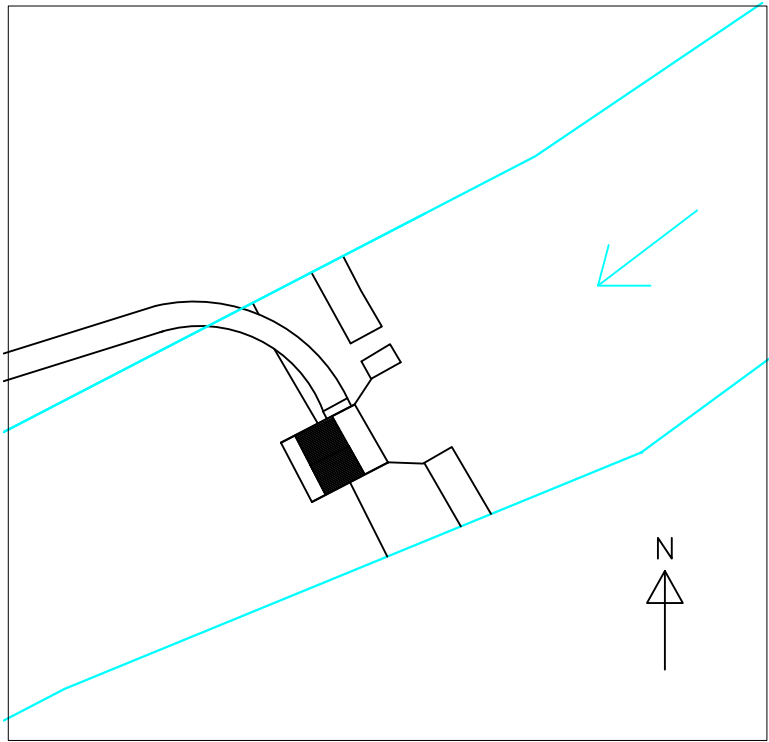


Needle House Hydro  
General Layout  
Rev B 31.01.2022

REVISIONS			
REV	DESCRIPTION	DATE	APPROVED
-			

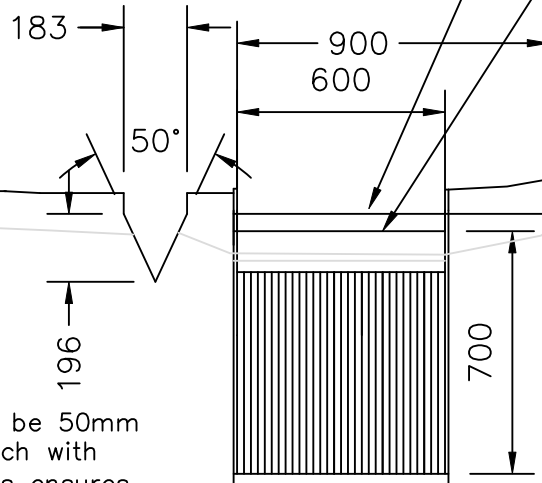
COANDA SCREEN WITH PREFABRICATED SUMP  
 ALL FROM 304 STAINLESS STEEL  
 1 MM SCREEN APERTURE

CONSTRUCTION NOTES  
 The weir will be constructed by the fixing of the prefabricated screen and sump onto the front face of the bedrock waterfall.



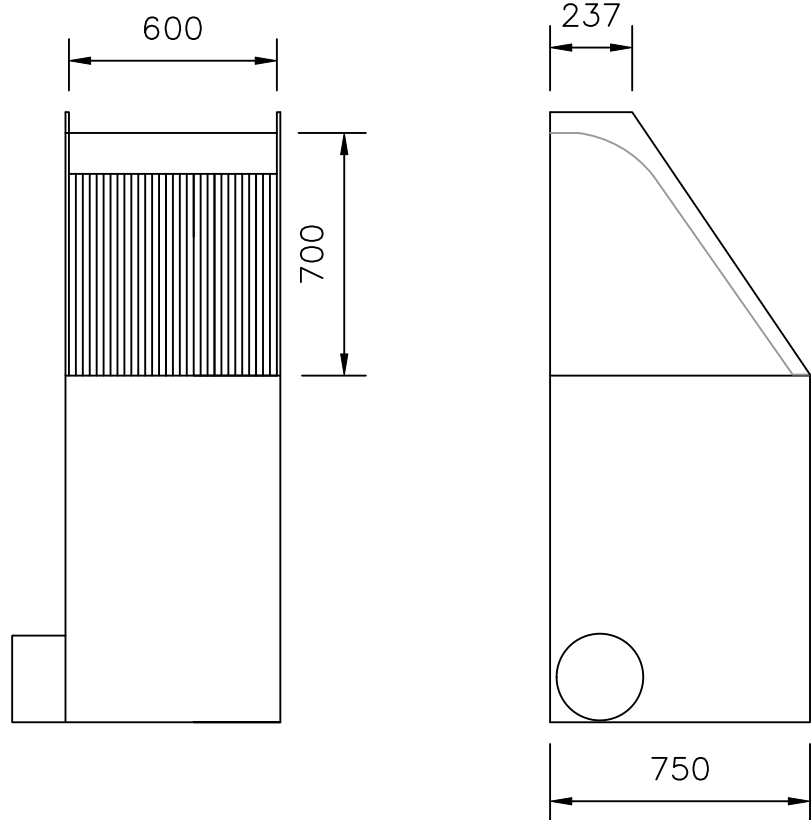
Flow split notches crest level

Coanda Screen Crest level

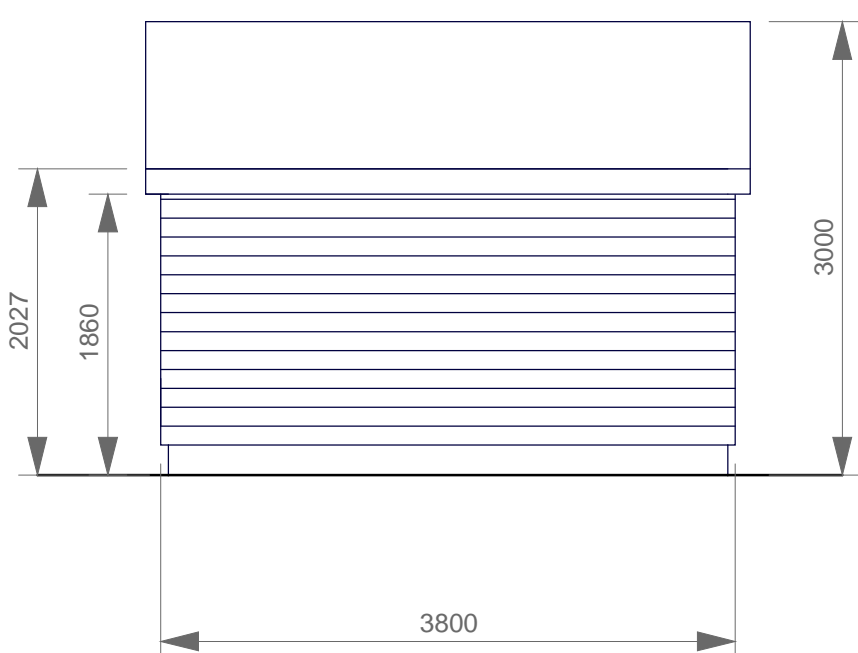


600mm coanda notch is to be 50mm below 900mm flow split notch with rock/concrete downslop. This ensures that the 600mm coanda notch does not reduce discharge of the 900mm flow split notch. Ensuring the 83.8% flow split is achieved between the 183mm wide notch (above the V notch) and the 900mm wide notch

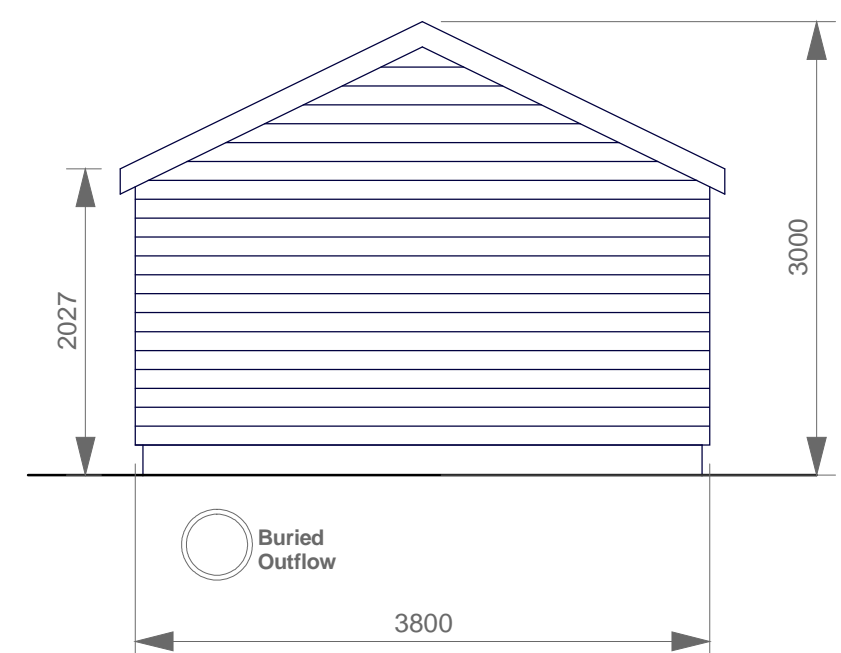
Outlet Pipe (250mm)



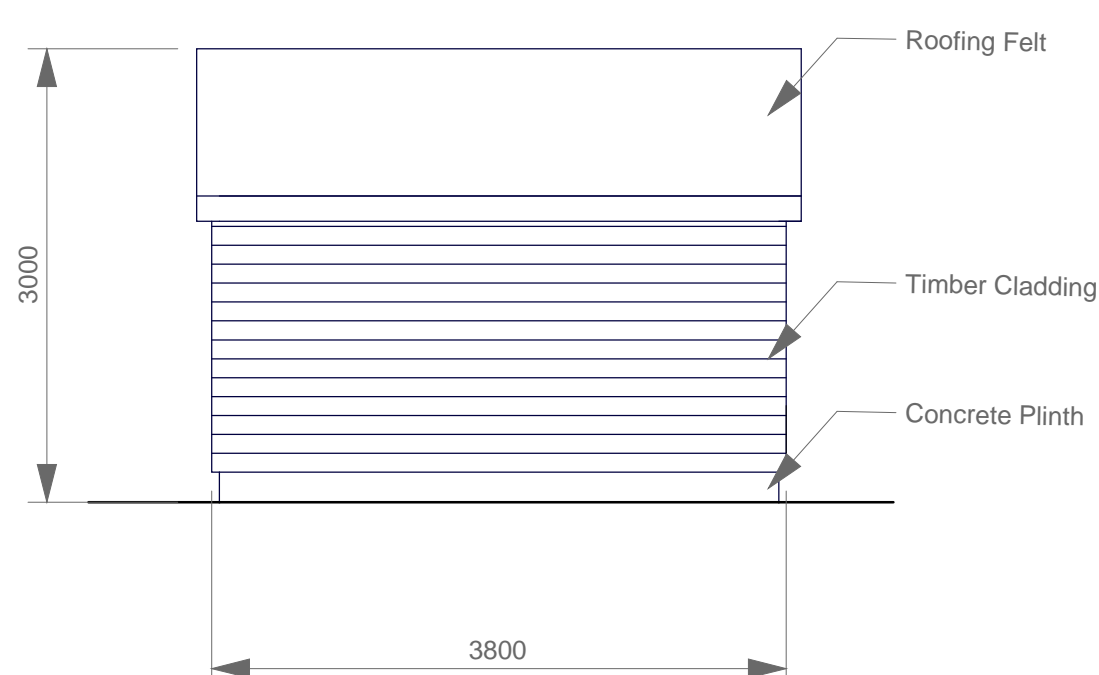
	DRAWING TITLE INTAKE		
	PROJECT Needlehouse Gill Hydro		
© 2011	SIZE A3	DWG NO. NHGH_INTAKE	REV A
PRELIMINARY DRAWING FOR CONSENTING PURPOSES - NOT FOR CONSTRUCTION	SCALE 1:25	DATE 15/03/2022	SHEET 1 OF 1



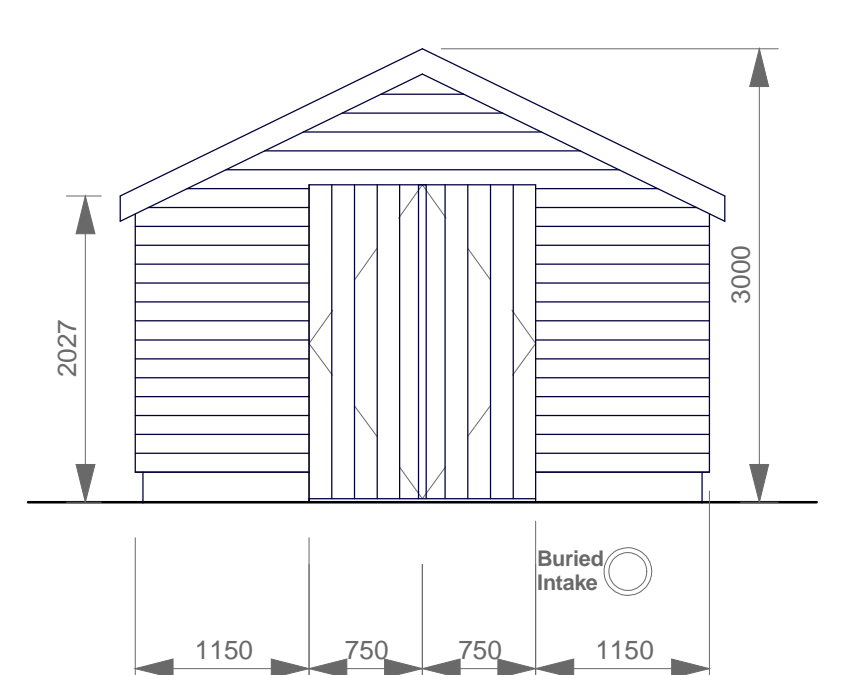
**North Elevation - Proposed**



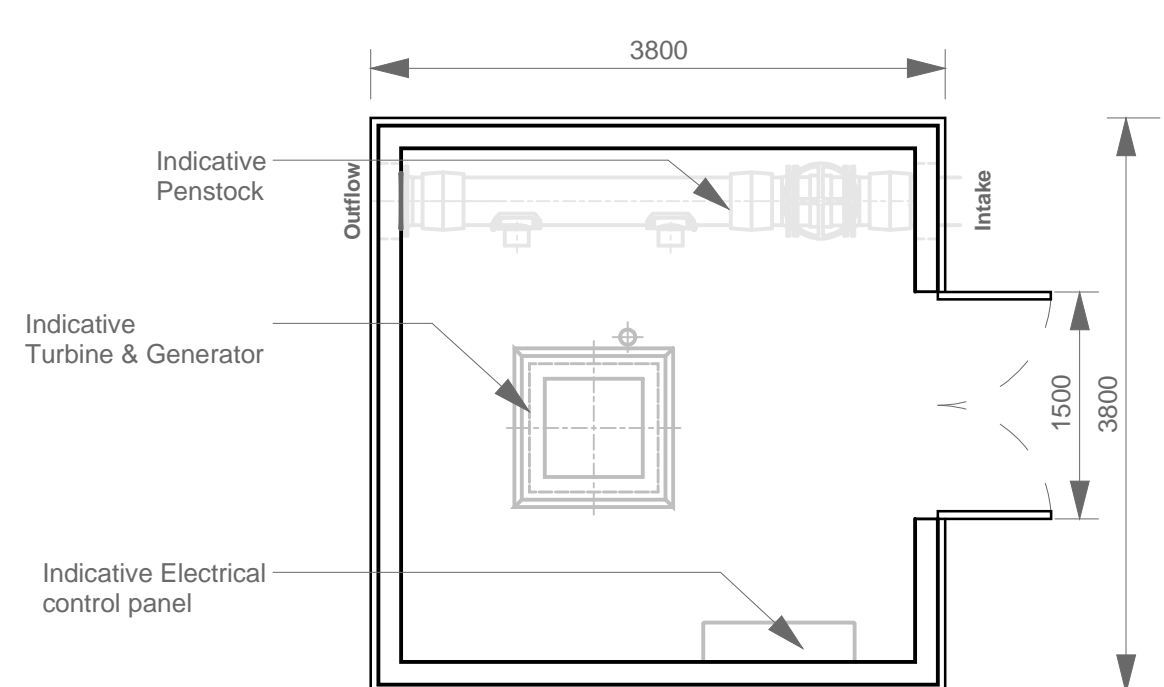
**West Elevation - Proposed**



**South Elevation - Proposed**



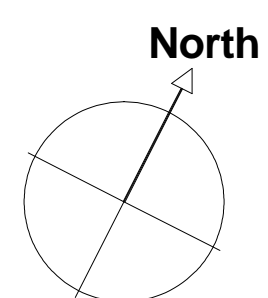
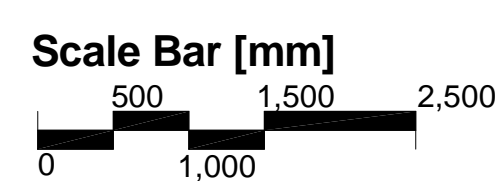
**East Elevation - Proposed**



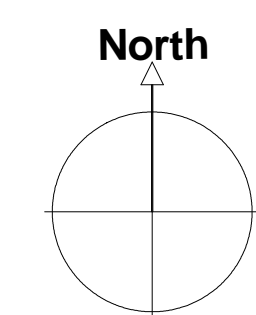
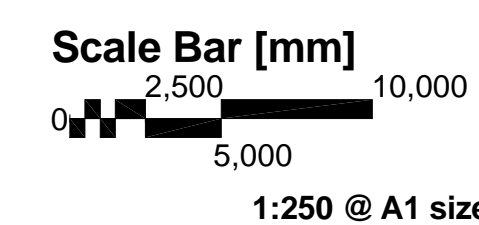
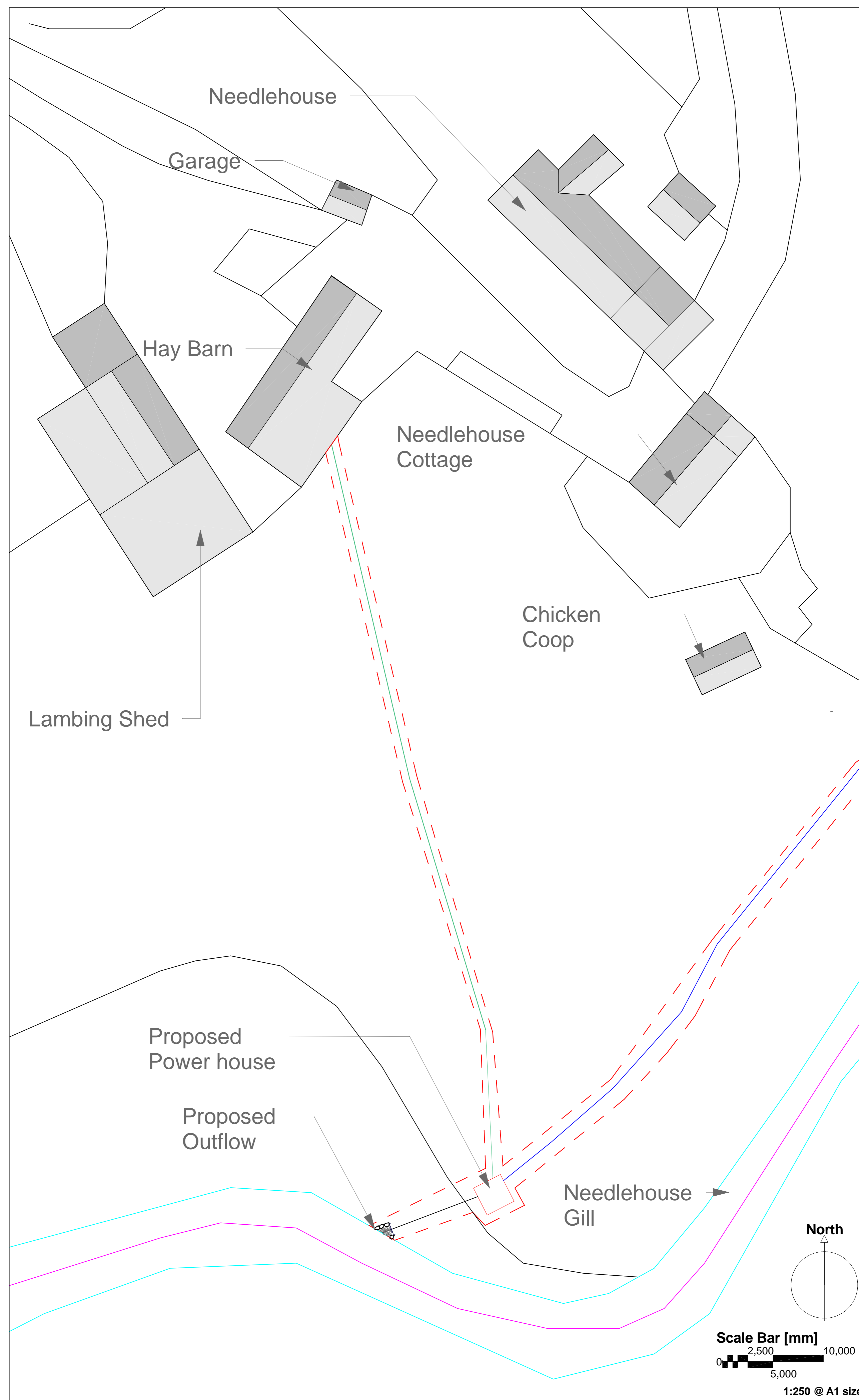
**Plan View - Proposed**

- Notes**
- Felt roof
  - Any vents to be fitted with baffle boxes on the inside to control noise
  - Double skin timber doors with noise attenuation built in
  - Double skin timber walls formed with noise attenuation built in
  - Land to be landscaped to cover pipe entry

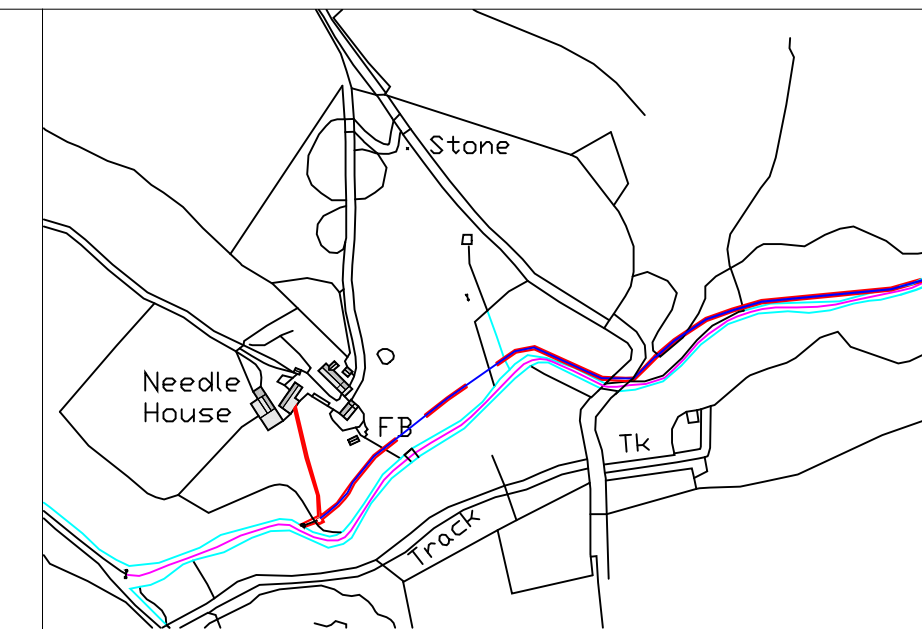
**Tolerances**  
Final Build dimensions may vary by +/- 0.4m depending on final mechanical and electrical equipment selections



1:50 @ A1 size



1:250 @ A1 size



This drawing has been prepared solely to obtain consent from the Environment Agency and Planning Consent from the YDNP / EDC. The scale(s) of the drawing are as noted. All dimensions and levels must be checked on site before work is started. Equipment sizes are indicative. © f-ind, 2021

- Key**
- Intake
  - Site Boundary
  - Pipeline
  - Outflow
  - Power Cable

Rev.	Comments	Date
A	EA Consenting	25.03.2022

**Project Name**  
Needlehouse Hydro Scheme

**Title**  
General Arrangement Drawing

**Drawing Number**  
NHE - NHH - 001 - PL

**Date**  
25 March 2022

Scale As Stated @ A1 size

**f-ind** Needlehouse Cottage, Fell End, Ravenstonedale, CA17 4LN +44 [0] 7981 948 627