

 <p>JOHNSONS Aggregates and Recycling Limited</p>	Risk Assessment Procedure	
	PROC. NO.	IBMSHE004
	ISSUE NO.	001
	PREPARED BY	NJB
	APPROVED BY	NJB

1. Introduction

This procedure defines a methodical approach to the assessment and reduction of risk arising from the activities of the company.

While planning for the IBM System, Johnsons has developed a mechanism to identify the risk and opportunity that need to be addressed to:-

- a) Assure the IBM System in place can achieve intended outcome
- b) Prevent, or reduce, undesired effects
- c) Achieve continual improvement
- d) Business Requirements

With respect to the IBM System, the Company has established and maintains procedures and documentation for identifying all health, safety and environmental risks, aspects, impacts of its activities which have the potential to affect any or all of the interested parties. This is achieved by carrying out risk assessments aspect & impact determinations and determining Business risk through contract review and Sales order process. Processes and procedures are defined and implemented across the Company to ensure that the expectations of the IBM System are achieved.

In order to mitigate the consequences of any unplanned event, emergency or disaster, and to consider the effect on business continuity, the division has established and maintains an Emergency Preparedness procedure and associated documentation.

2. Scope

The procedure applies to all Johnsons Aggregates employees

3. Responsibilities

The Operations Manager, Managers, Supervisors, Operatives and HSQE Manager are all responsible for identifying the need for risk assessment. They are also responsible for carrying them out before work commences as well having responsibility for identifying necessary control actions and their effective implementation. All Transport Operatives must assess their own changing risks.

4. Procedure

Risk Assessment will be generally documented on Appendices 1 or 1a.

In certain cases assessment of risk may benefit from a more in-depth assessment, for instances ones where there is a high risk of injury from manual handling. For these reasons other risk assessment documentation has been produced for use as required.

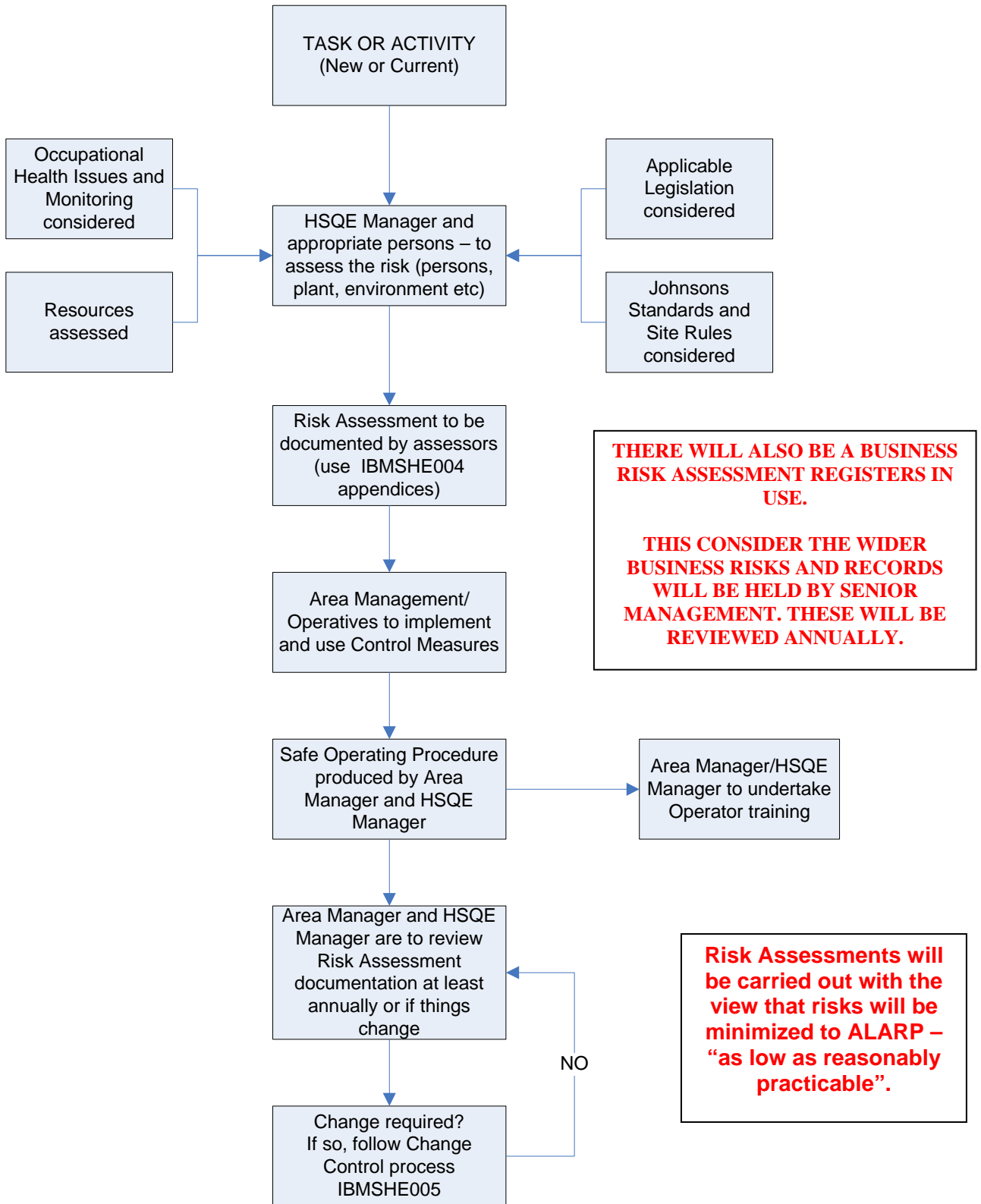
Johnsons Aggregates	Business Management System Procedure
	IBMSHE004 - Risk Assessment Procedure
	June 2017

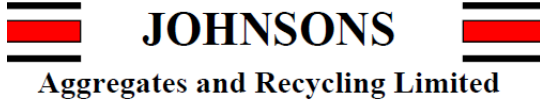
PROC. NO.	IBMSHE004
ISSUE NO.	001
PREPARED BY	NJB
APPROVED BY	NJB

The list of documents is...

Document Reference	Description
Johnsons Risk Register	Holistic overview of Business Risks
IBMSHE004 Appendix 1	Standard Risk Assessment Document (Job Step Analysis Type)
IBMSHE004 Appendix 1a	Risk Assessment – where the task cannot easily be broken down
IBMSHE004 Appendix 2	COSHH Assessment
IBMSHE004 Appendix 3	Manual Handling – Full Assessment
IBMSHE004 Appendix 4	Upper Limb Disorders – Preliminary Assessment
IBMSHE004 Appendix 5	Upper Limb Disorders – Full Assessment
IBMSHE004 Appendix 6	Work at Height Checklist
IBMSHE004 Appendix 7	Young Persons Assessment
IBMSHE004 Appendix 8	DSEAR Assessment
IBMSHE004 Appendix 9	Machinery Hazard Identification Form
IBMSHE004 Appendix 10	Manual Handling – Preliminary Assessment
IBMSHE004 Appendix 11	Pregnancy Risk Assessment
IBMSHE004 Appendix 12	Risk Assessment for Training Purposes Only
IBMSHE004 Appendix 13	Confined Spaces
IBMSHE004 Appendix 14	DSEAR Assessment

Risk Assessment Procedure	
PROC. NO.	IBMSHE004
ISSUE NO.	001
PREPARED BY	NJB
APPROVED BY	NJB





Risk Assessment Procedure

PROC. NO.	IBMSHE004
ISSUE NO.	001
PREPARED BY	NJB
APPROVED BY	NJB

5 Revision History

Issue	Review Date	Changes
001	June 2017	New Document