

**Environmental Setting**

- Site lies within a Groundwater Source Protection Zone 3 - Defined as the area around a source within which all groundwater recharge is presumed to be discharged at the source. In confined aquifers, the source catchment may be displaced some distance from the source. For heavily exploited aquifers, the final Source Catchment Protection Zone can be defined as the whole aquifer recharge area where the ratio of groundwater abstraction to aquifer recharge (average recharge multiplied by outcrop area) is >0.75. There is still the need to define individual source protection areas to assist operators in catchment management (Source: Environment Agency)
- Superficial Deposits - Glaciofluvial Deposits, Devensian - Sand And Gravel. Superficial Deposits formed up to 2 million years ago in the Quaternary Period. Local environment previously dominated by ice age conditions (UGF) - Source: BGS.
- Bedrock Deposits - Bridgnorth Sandstone Formation - Sandstone. Sedimentary Bedrock formed approximately 272 to 299 million years ago in the Permian Period. Local environment previously dominated by wind blown deposits (Source: BGS).
- The site was formerly a scrap metal yard (Taurus Metals UK Ltd), landfill -operated by Wellington Rural District Council pre Control of Pollution Act 1974, sand pit and agricultural land.

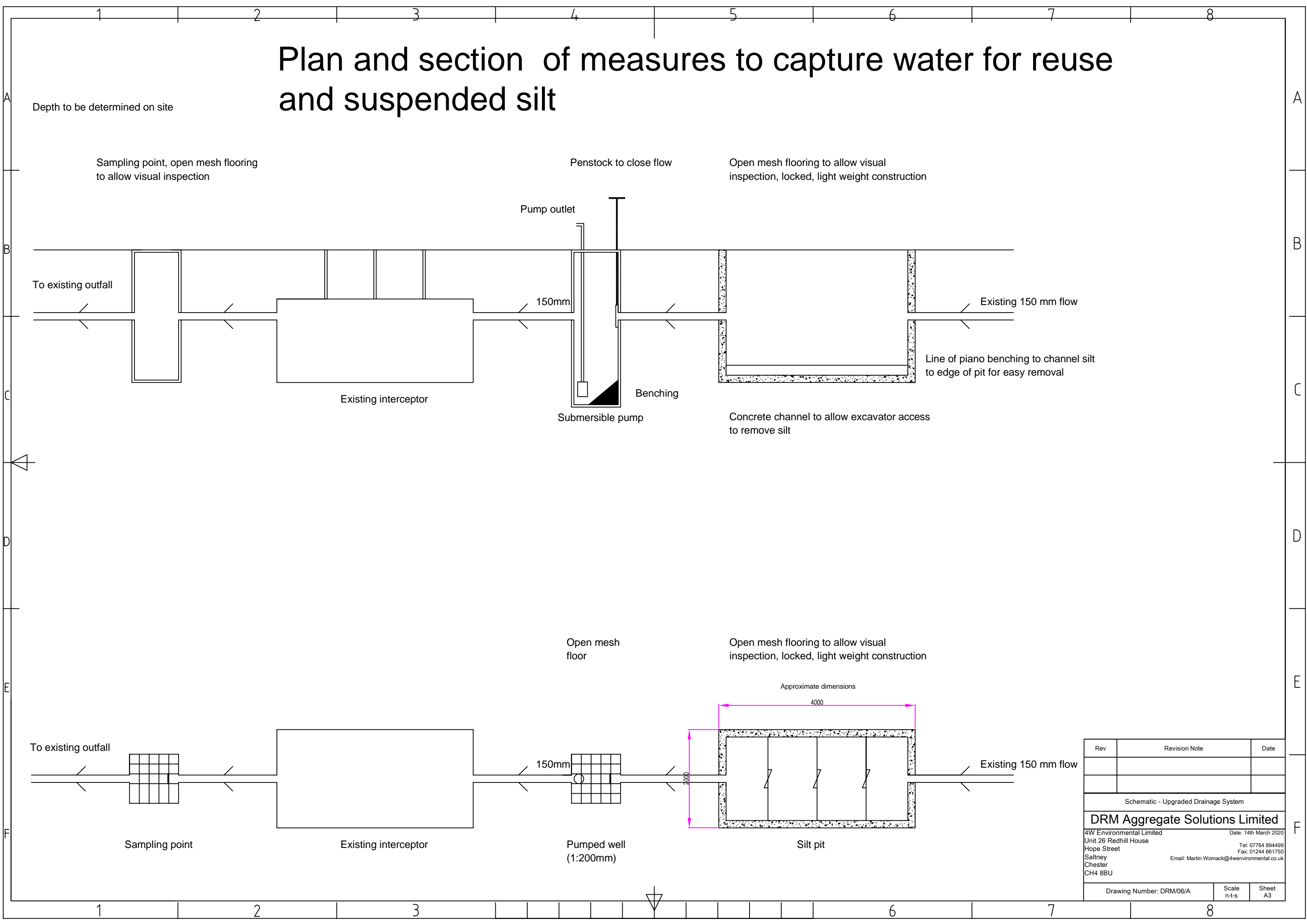


Rev	Revision Note	Date
<b>Schematic Site Layout</b>		
<b>DRM Aggregate Solutions</b>		
4W Environmental Limited Unit 26 Redhill House Hope Street Saltney Chester Email: Martin.Womack@4wenvironmental.co.uk CH4 8BU		Date: 18th July 2019 Tel: 07764 894499 Fax: 01244 661750
Drawing Number: DRM/02/A	Scale 1:600	Sheet A3

Protected Woodland

Protected Woodland

# Plan and section of measures to capture water for reuse and suspended silt



Rev	Revision Note	Date
Schematic - Upgraded Drainage System		
<b>DRM Aggregate Solutions Limited</b>		
4W Environmental Limited Unit 26 Redhill House Hope Street Saltney Chester CH4 8BU		Date: 14th March 2020 Tel: 07764 894499 Fax: 01244 661750 Email: Martin.Womack@4wenvironmental.co.uk
Drawing Number: DRM/06/A		Scale n-t-s
Sheet A3		