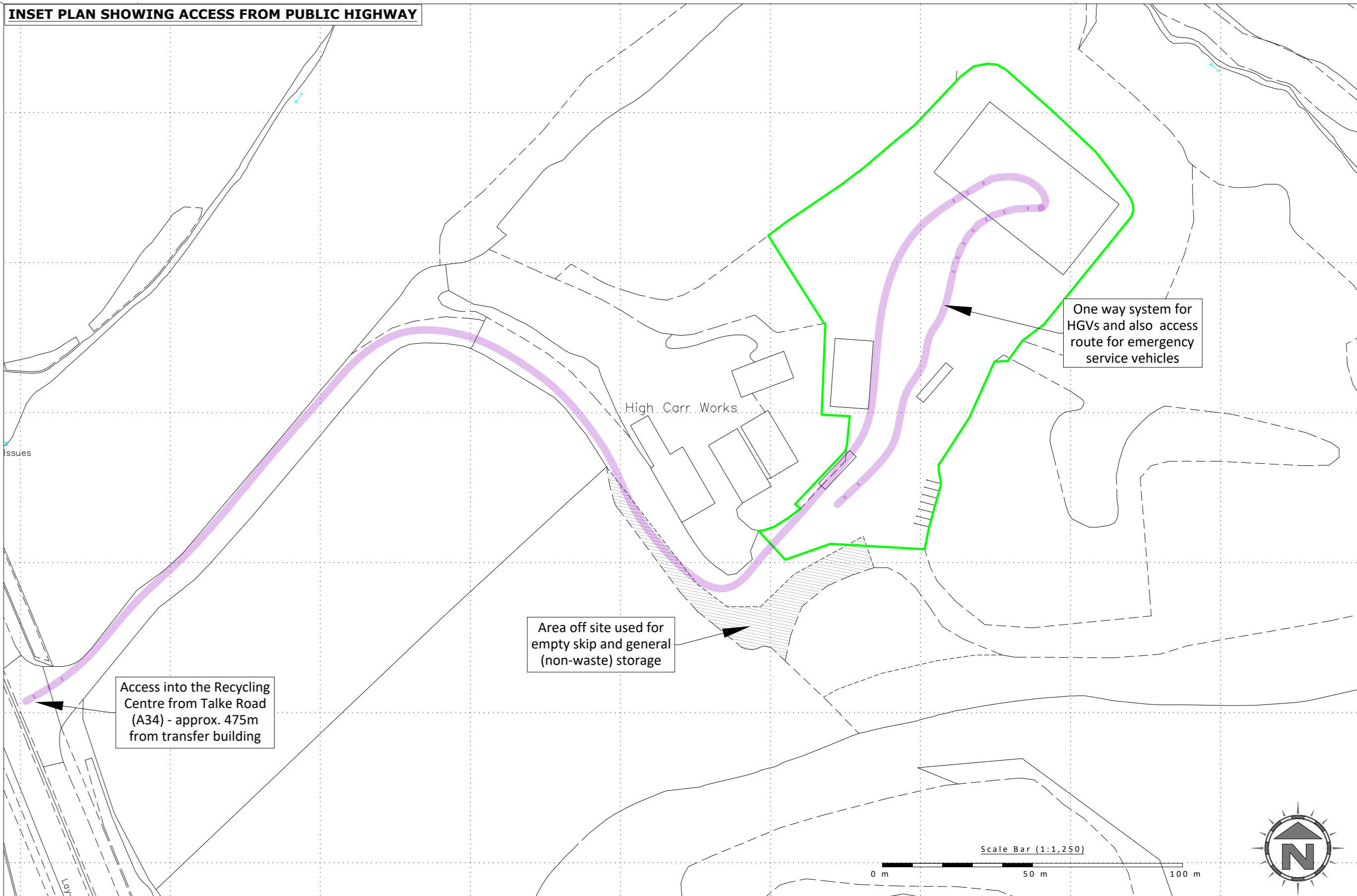


Waste Storage Area Details - PILE SIZES BASED ON AREA OF STOCKPILE ON SITE PLAN NOT LENGTH X WIDTH												
Plan Ref	Description	Storage type	Containment	Height / width of firewall (m)	Max Width (m)	Max Length (m)	Height (m)	Max area (m2)	Conversion factor used	Volume (m3)	Tonnage (approx.)	Maximum storage durations
AREA 1	Sorted recyclables i.e. wood, green, C&D, residual waste etc... (contents in each bay may vary)	Unprocessed	Free-standing (partly contained) inside concrete sleeper storage bay	3 / 0.2	15	11	2	165	0.5	165	100- 200 (depending on waste stored)	<14 days
AREA 2	As above	Hand sorted or by treatment plant (picking line)	Free-standing inside three-sided concrete sleeper storage bay	3 / 0.2	12	10.5	2	126	0.75	189	As above	<14 days
AREA 3	As above	Hand sorted or using excavator	As above	3 / 0.2	12	10.5	2	126	0.75	189	As above	<14 days
AREA 4	As above	Hand sorted or using excavator	As above	3 / 0.2	12	10.5	2	126	0.5	126	As above	<14 days
AREA 5	Plasterboard bay	Hand sorted from AREA 7 and source segregated	Free standing inside a three-sided concrete interlocking block storage bay	3.2 / 0.8	4.8	4.8	2	23.04	0.75	35	17	<5 days
AREA 6	Mixed municipal waste	Partly hand sorted arising from tipping area below	Free-standing inside two sided concrete panel wall	4 / 0.18	12	12	3	144	0.333	144	47	<72 hours
AREA 7	Waste reception (tipping), inspection and sorting area (clear out-of-hours)	Free-standing / unprocessed	N/A	N/A	10	10	1	100	0.333	33	11	<2 hours
AREA 8	Bulky waste skips	Hand sorted or by grab	Open topped, moveable 40 cubic yard roll on roll off skip / concrete panel wall	4 / 0.18	6.1	2.44	2.62	14.884	1	39	20- 30	<5 days
AREA 9	Mixed C&D waste (80% inert)	Partly hand sorted arising from tipping area (AREA 7)	Free-standing against front of concrete panel wall	4 / 0.18	7	20	2	140	0.5	140	168	<72 hours
AREA 10	Metals	Sorted by overband magnet	Open topped, moveable 20 cubic yard roll on roll off skip	N/A	6.1	2.44	1.4	14.884	1	21	25	<5 days
AREA 11	<5mm screened (qualifying) fines	Sorted (by double deck shaker screen)	Free-standing inside a three-sided concrete panel wall	3.0 / 0.18	8.5	4.5	2	38.25	0.75	57	57	<5 days
AREA 12	<25mm screened fines for landfill	As above	As above	3.0 / 0.18	4	4	2	16	0.75	24	24	<5 days
AREA 13	Lights (mixed waste)	Sorted (by double deck screen & blower)	Free standing inside a three-sided concrete panel storage bay and cage at the front	3.0 / 0.18	4	4	2	16	0.75	24	8	<5 days
AREA 14	Wood	Hand sorted	Free-standing inside two-sided concrete sleeper storage bay	3 / 0.18	5.5	4	1.5	22	0.75	25	12	<72 hours
AREA 15	As above	As above	As above	3.0 / 0.18	4	3.5	2	14	0.75	21	7	<5 days
AREAS 16 - 19	Hand sorted recyclables i.e. wood, plastic, residual waste etc...	Hand sorted from the picking line	Free standing inside a three-sided concrete panel storage bay	3.0 / 0.18	4	3.5	2	14	0.75	21	11	<5 days
AREA 20	Metals	Sorted by overband magnet	Open topped, moveable 40 cubic yard roll on roll off skip inside a three-sided concrete panel storage bay	3.0 / 0.18	6.1	2.44	2.62	14.884	1	39	47	<5 days
AREA 21	Stone/concrete/hardcore	End of mechanical treatment process	Free standing inside a three-sided concrete panel storage bay	3.0 / 0.18	4	3.5	2	14	0.75	21	25	<5 days
AREAS 22	Crushed stone/concrete/hardcore	Free-standing	No containment	N/A	8	8	2	64	0.333	43	51	<5 days
AREAS 23	Sorted soils/clay	Free-standing	No containment	N/A	15	15	4	225	0.333	300	360	<3-6 months



NOTES

Drawing for indication only. Reproduced with the permission of the controller of H.M.S.O. Crown copyright licence No. 100022432. This drawing is copyright and property of Oaktree Environmental Ltd.

REVISION HISTORY

Rev:	Date:	Init:	Description:
-	18.06.19	CP	Initial drawing
A	19.06.19	CP	Client comments
B	01.01.20	CP	Client comments
C	31.01.22	CP	Update for EA
D	17.08.22	CP	Update for permit variation

Key:

- Proposed permit boundary
- Waste storage areas
- Non-waste storage areas
- Non-waste fuels, oils and other liquids storage
- Waste recycling building (impermeable concrete floor)
- Other buildings i.e. workshops/offices
- Impermeable concrete surfaces with sealed drainage
- Hardstanding (freely draining areas)
- Contaminated surface water drainage
- Clean surface water drainage
- Surface water drainage fall direction
- Gully's
- Manholes
- Quarantine area (with 6m buffer zone) based on AREA 7
- Hose reels (indicative location)
- Fire fighting equipment / extinguishers (indicative locations)
- Plant shutdown (indicative location)
- Manual fire alarms (break glass / horns) - indicative location
- Spill kits (indicative location)
- Designated smoking area
- Access route for emergency services
- Fire hydrants
- Fire assembly points
- Out-of-hours plant storage
- Pan, tilt and zone cameras with 360° 50m coverage

DRAWING TITLE

SITE LAYOUT PLAN

CLIENT

Oaktree Environmental Ltd

PROJECT/SITE

High Carr Recycling Centre, High Carr Farm, No 2, Talke Road, Chesterton, Newcastle Under Lyme, Staffordshire, ST5 7AL

SCALE @ A3

1:200

CLIENT NO

2628

JOB NO

002

DRAWING NUMBER

HCRC/2682/03

REV

D

STATUS

Issued

DRAWN BY

CP

CHECKED

--

DATE

17.08.22

Lime House, Road Two, Winsford, Cheshire, CW7 3QZ

t: 01606 558833 | e: sales@oaktree-environmental.co.uk

Oaktree Environmental Ltd

Waste, Planning and Environmental Consultants