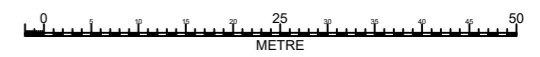
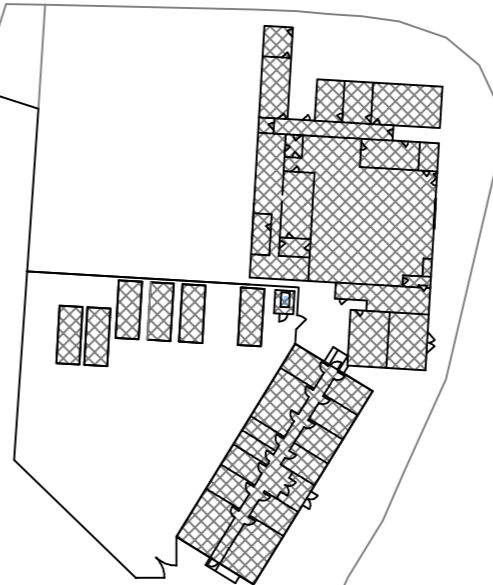


- RELEASES TO AIR
- RELEASES TO WATER
- RELEASES TO SEWER
- PLANT BOUNDARY



Tradebe Solvent Recycling  
Hendon Dock  
Sunderland  
Tyne & Wear  
SR1 2ES  
0044 191 566 0000  
0044 191 566 0025  
<http://www.tradebe.co.uk>

<b>TITLE</b>			
<b>SITE PLAN - PPC EMISSION POINTS</b>			
DRAWN BY	DATE	PROJECT	SCALE
A.Fielden	11/11/13		1:800 (A3)
SITE		DRAWING No.	REVISION
Sunderland		S-LY001-AE	C

REFERENCE DRAWINGS									
	B	C							
	A.Fielden 02/10/14 MOD	A.Fielden 04/11/22 MOD							
REVISIONS	1. Added water & sewer emission points 2. Revised A18 & A19 (DMS & ST) 3. Added to OCC system 4. Revised A21 (TMS) water duty 5. Revised A22 (Compressor plant) 6. Revised A23 (plant plant)	1. Revised W1 2. Plant boundary added							