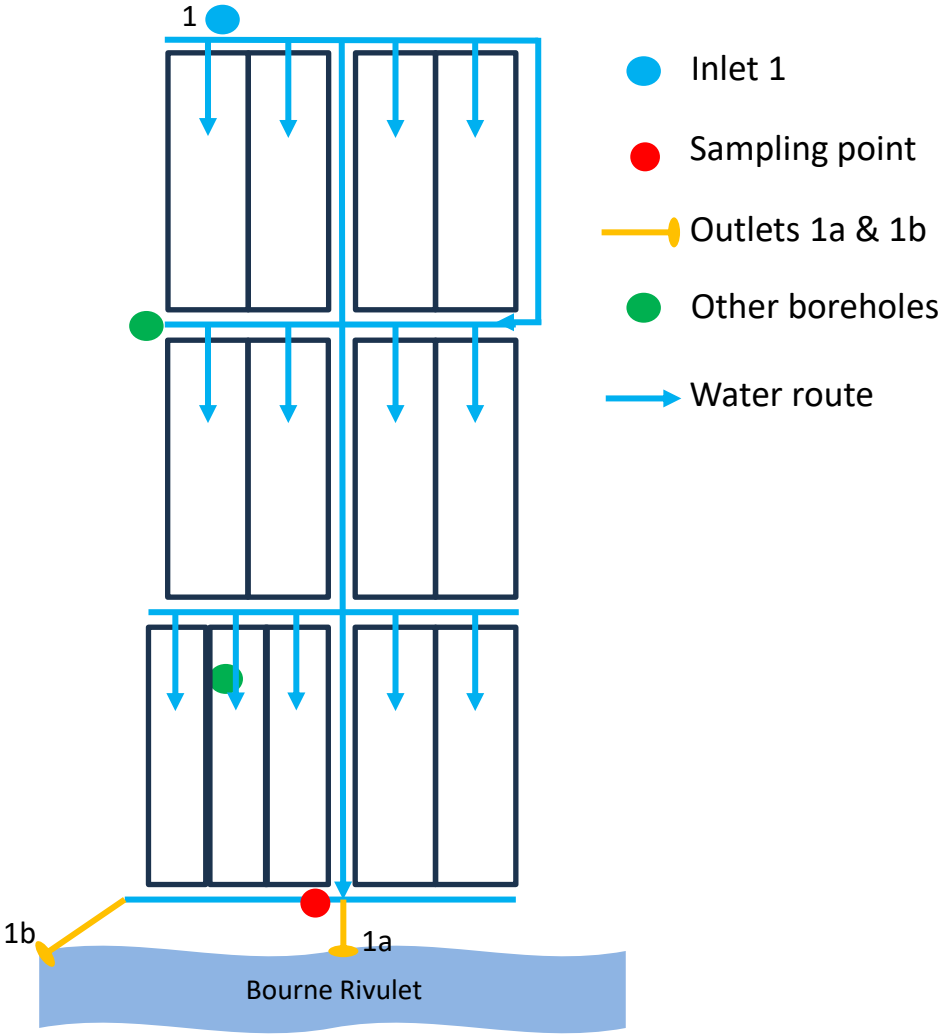
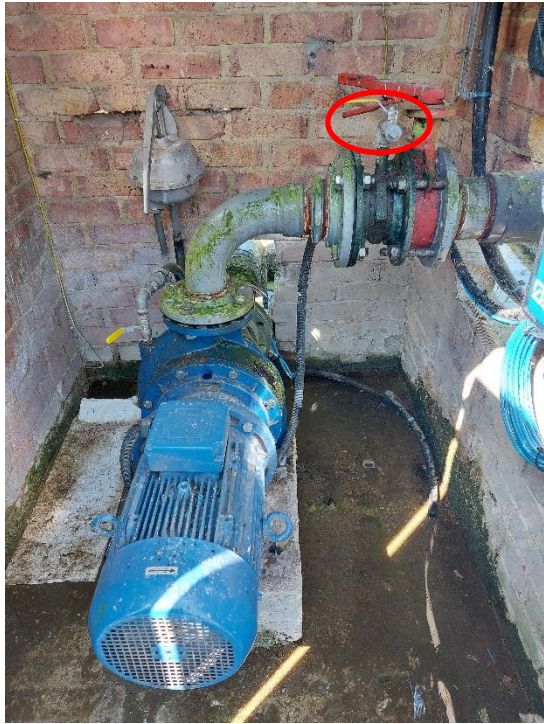


Activity 1a and 1b: D block



D block activity photos

Inlet 1: D block inlet



Effluent sample point 1: D block effluent



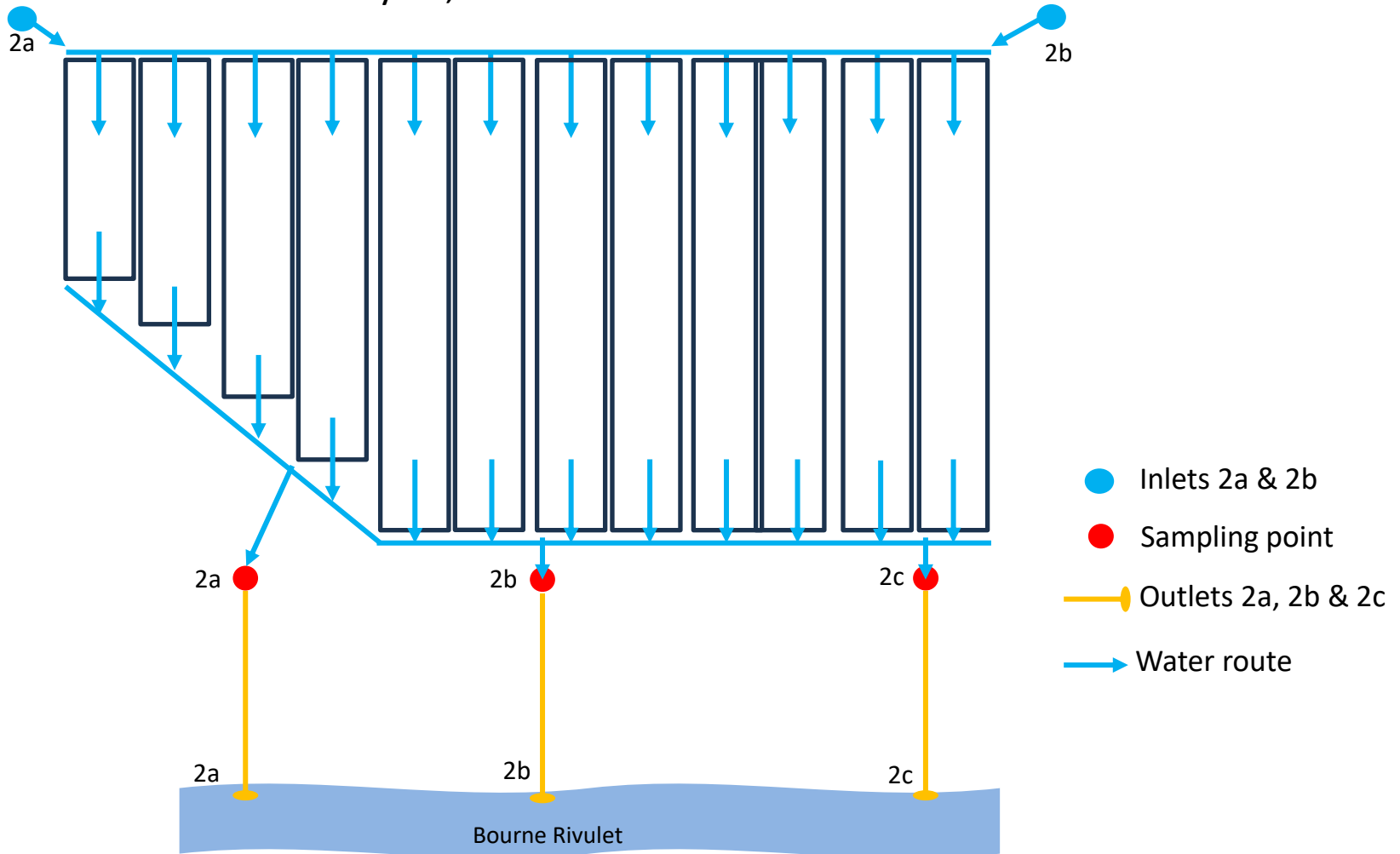
Outlet 1a: D block effluent



Outlet 1b: D block effluent



Activity 2a, 2b and 2c: R block



R block inlets and sample points photos

Inlet 2a: R block BH 15



Inlet 2b: R block BH 16



Sample point 2a: R block effluent



R block sample point and outlet photos

Sample point 2b: R block effluent



Sample point 2c: R block effluent



Outlet 2a: R block outlet



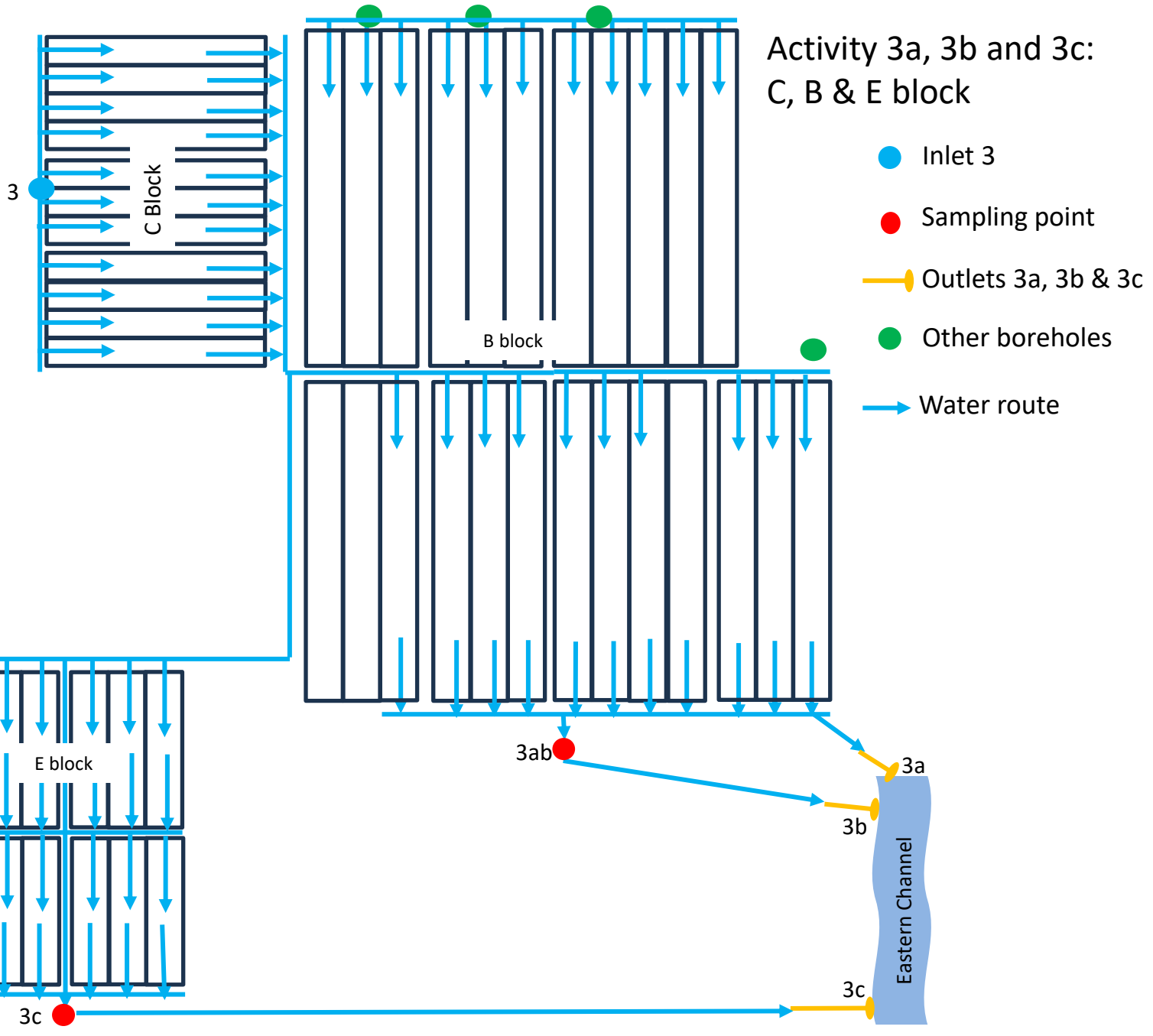
R block outlet photos

Outlet 2b: R block outlet



Outlet 2c: R block outlet





To R
block

To R
block

3

C Block

B block

E block

3c

3ab

3a

3b

3c

Eastern Channel

C, B and E block inlet and sample point photos

Inlet 3: BH 10



Sample point 3ab: B block effluent



Sample point 3c: E block effluent



C, B and E block outlet photos

Outlet 3a: B, C effluent



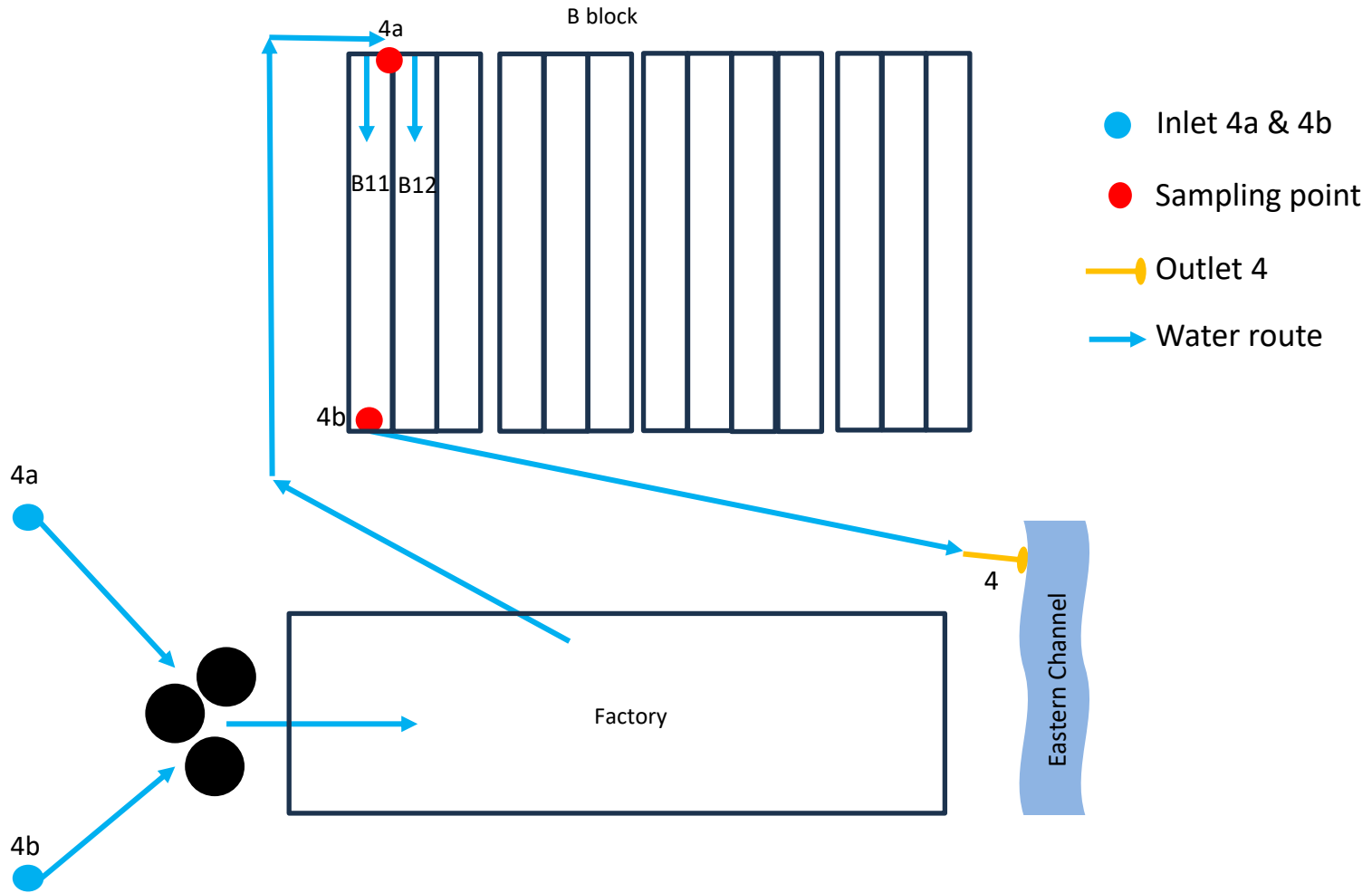
Outlet 3b: B, C effluent



Outlet 3c: E block effluent



Activity 4: vegetable washing



Vegetable washing inlet and sample point photos

Inlet 4a: Factory BH 1



Inlet 4b: factory BH 2



Sample point 4a: factory effluent



Vegetable washing sample point photos

Sample point 4b: Factory effluent



Outlet 4: factory effluent



