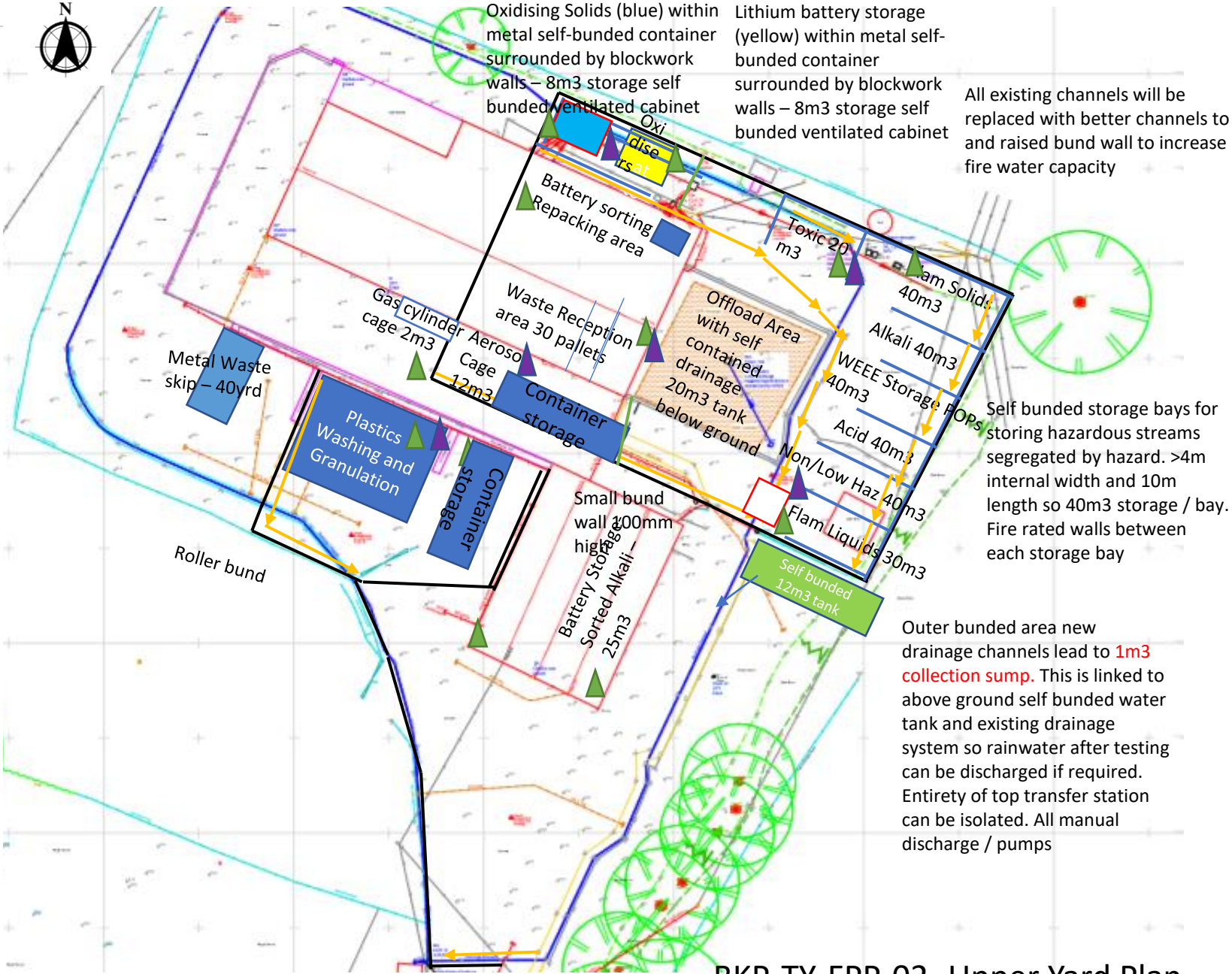


- | | |
|--|--|
| | Building |
| | Building Canopy |
| | Roofs |
| | Channel |
| | BT Cables |
| | Electricity Cable |
| | Kerb |
| | Dropped Kerb / Edge of Road |
| | Fence |
| | Foot Path |
| | Road Centre Line |
| | Steps |
| | Surface Water |
| | Tarmac |
| | Concrete |
| | Top of Bank |
| | Bottom of Bank |
| | Edge of Grass |
| | Bushes |
| | Hedge |
| | Tree Canopy |
| | Wall |
| | Gate |
| | Telegraph Pole |
| | Electricity Pole |
| | Drain Pipe |
| | Soil Vent Pipe |
| | Lamp Post |
| | Gully (CL - cover level) |
| | Fire Hydrant (CL: cover level) |
| | BT telecoms cover (CL: cover level) |
| | Inspection Cover (CL: cover level, IL: invert level) |
| | Manhole (CL: cover level, IL: invert level) |
| | Stop Cook |
| | Water Meter |
| | |



Oxidising Solids (blue) within metal self-bunded container surrounded by blockwork walls – 8m3 storage self-bunded ventilated cabinet

Lithium battery storage (yellow) within metal self-bunded container surrounded by blockwork walls – 8m3 storage self-bunded ventilated cabinet

All existing channels will be replaced with better channels to and raised bund wall to increase fire water capacity

Self-bunded storage bays for storing hazardous streams segregated by hazard. >4m internal width and 10m length so 40m3 storage / bay. Fire rated walls between each storage bay

Outer-bunded area new drainage channels lead to 1m3 collection sump. This is linked to above ground self-bunded water tank and existing drainage system so rainwater after testing can be discharged if required. Entirety of top transfer station can be isolated. All manual discharge / pumps

Key on Overlay

- NEW BUND WALL 300mm minimum
- STORAGE BAY WALL, MEETING REQUIREMENTS FOR HSG 71 AND CIRIA
- NEW DRAINAGE CHANNEL OR UPGRADE OF EXISTING WITH FLOW DIRECTION
- FIRE EXTINGUISHER
- BOTH SURFACE WATER TANKS HAVE AVAILABLE CAPACITY TO SUPPLY WATER IN THE EVENT OF A FIRE
- SPILL KIT
- Electricity supply, 3 phase 100amp

BKP-TY-FPP-02- Upper Yard Plan