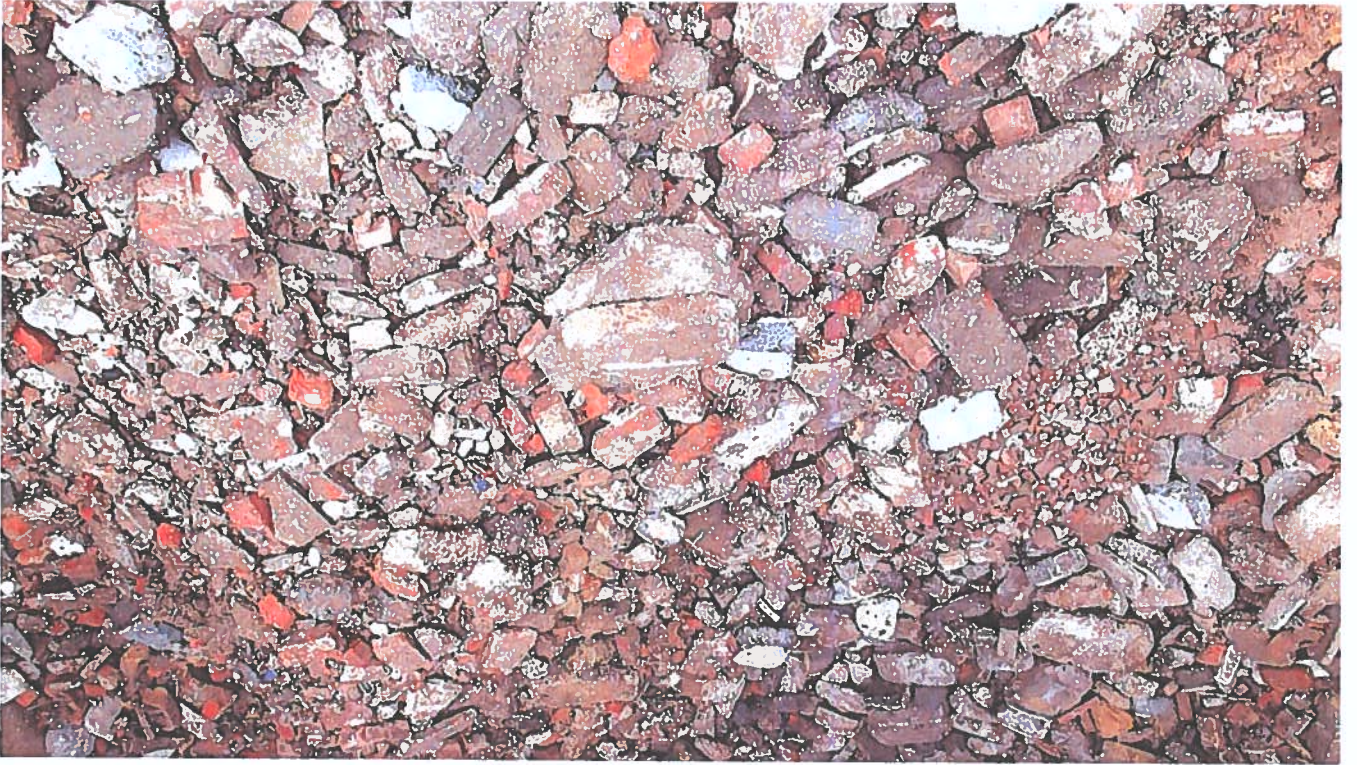
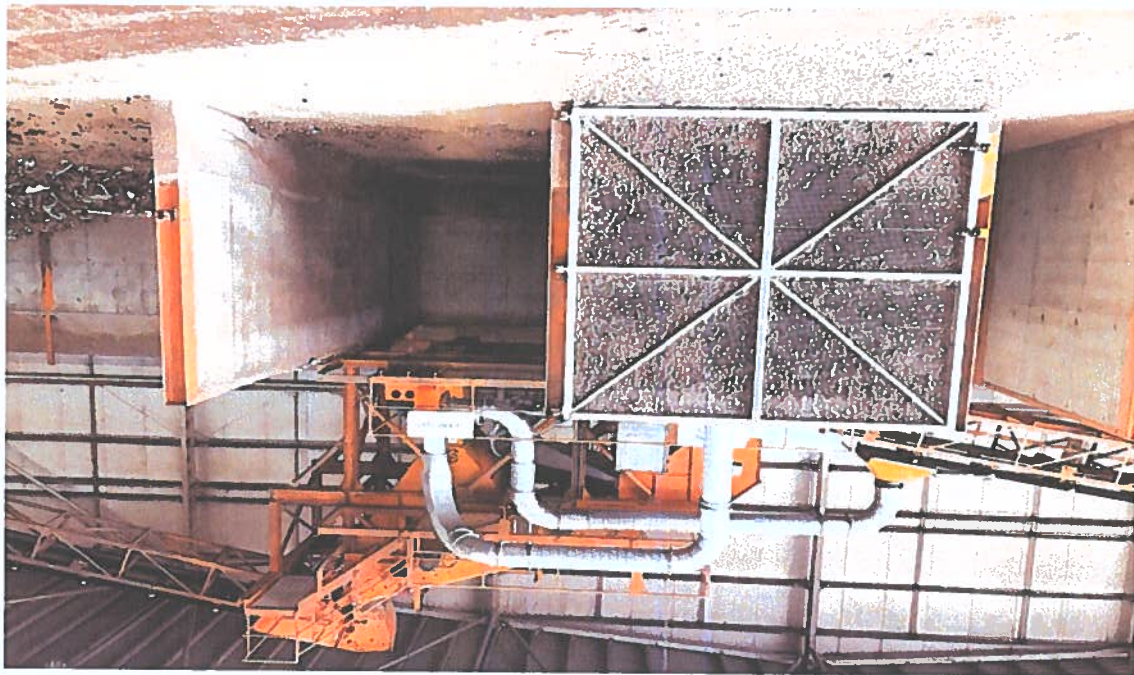


Photographic Plate(s) : 10 & 11 – Building3, +30mm Hardcore Bay destined for Area 4 with close up

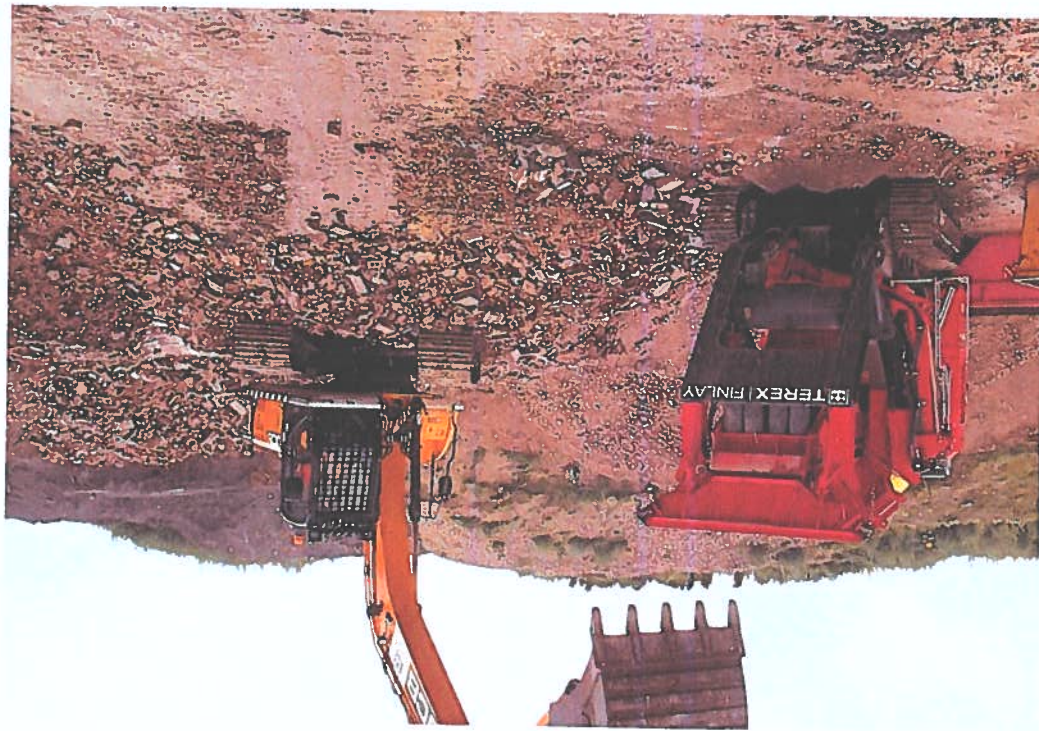


Photographic Plate(s) : 12 and 13 - Building 3, further air extraction to remove lightweights and produce clean 20mm and 40mm hardcore for Blending.





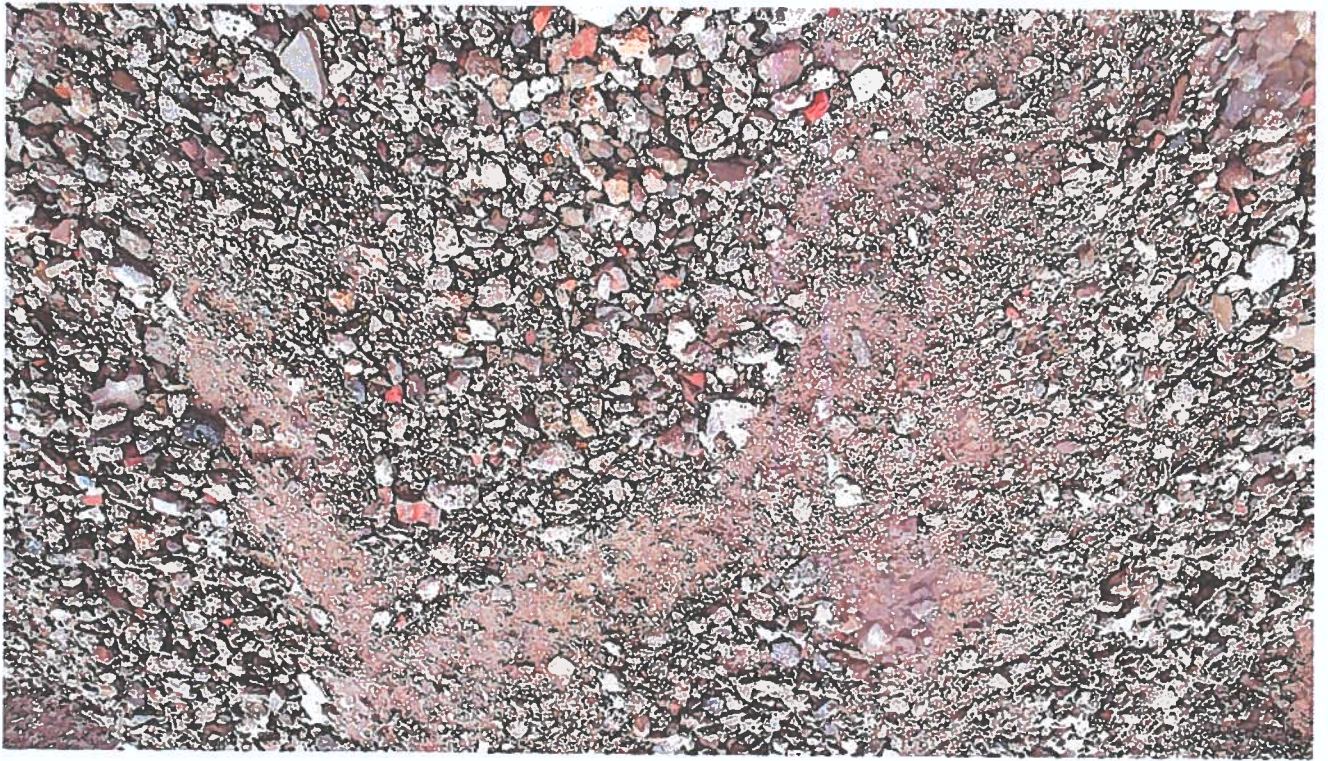
Photographic Plate(s) : 14 & 15 - Area 4, Finlay Crusher and showing Excavator on +30mm Hardcore from Building 1



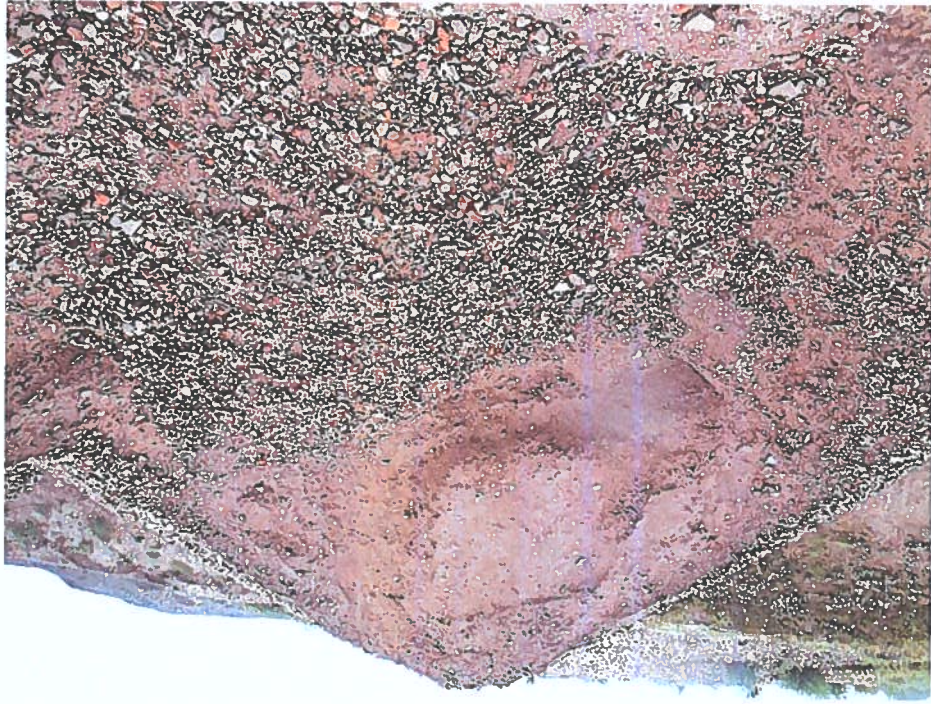


Photographic Plate(s) : 16 - Area 4, Clean Concrete (17.01.01) Stockpile - Direct From External Sources

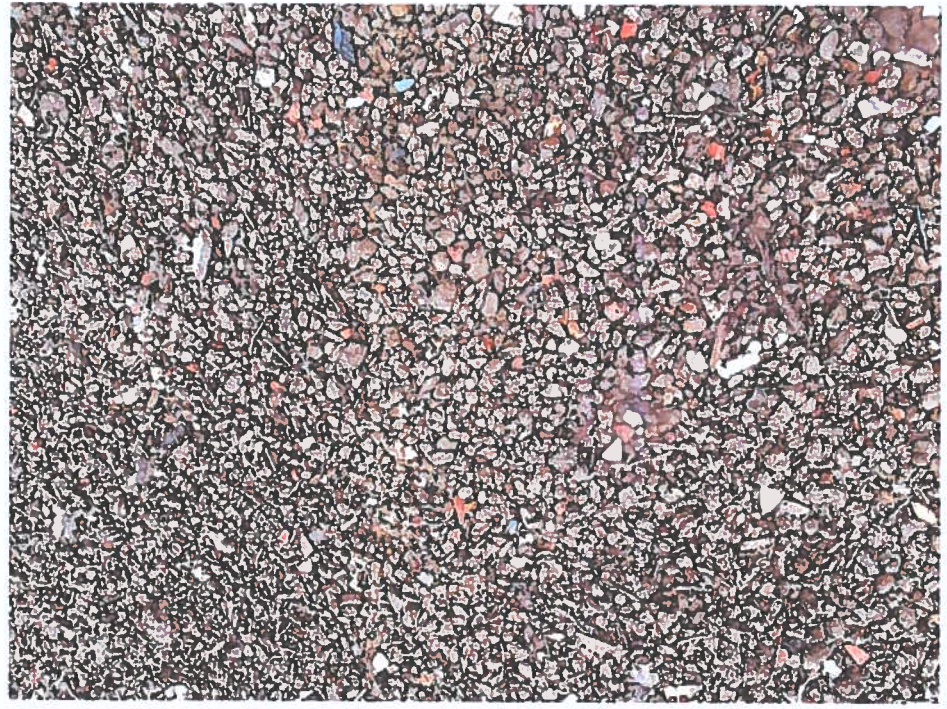
Photographic Plate(s) : 17 - Area 4, Ex Finlay Crusher PRODUCT - Recycled Type 1



Photographic Plate(s) : 18 & 19 - Area 4 Ex Finlay Crusher PRODUCT - Recycled 6F5 and close up



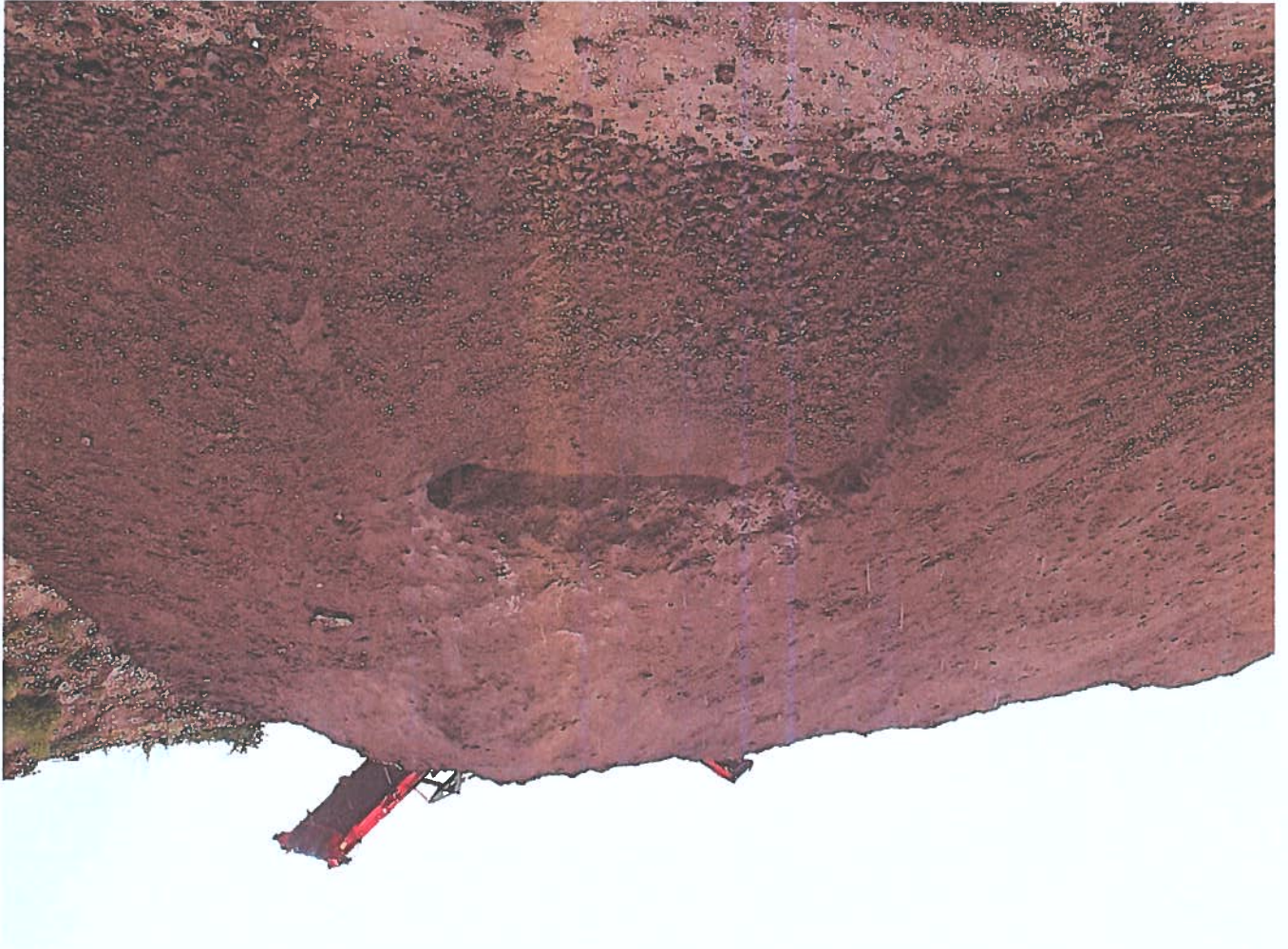
Photographic Plate(s) : 20 & 21 - Area 4, Finlay Dry Screen Plant showing -30mm+10mm by-product production pile



Close up



Photographic Plate(s) : 22 - Area 4, Ex Finlay Screener PRODUCT: -10mm Recycled Aggregate Fill
- Production pile beneath conveyor discharge



APPENDIX A

National Vocational Qualification

Qualification Title:

Level 4 in Waste Management Operations - Managing Transfer
Hazardous Waste (4TSH)

Qualification Accreditation Number:

10026563

This Certificate is awarded to

Philip John Liddell

Awarded: 14/03/2013

Serial No:12430/4TSH/1

Authorised



Chris James
Chief Executive Officer, WAMITAB



Ray Burberry
Qualifications Manager, WAMITAB



The qualifications regulators logos on this certificate
indicate that the qualification is accredited only for
England, Wales and Northern Ireland.



DRAWING 003

