

# **Environmental Risk Assessment**

Prepared on Behalf of:

**Swindon Metal Recycling Limited**

Site Name:

**Marshgate Works**

**Unit B Marshgate**

**Swindon**

**Wiltshire**

**SN1 2PA**

**Environmental Permit:**

**GB403TV**

## DOCUMENT CONTROL SHEET

<b>Site:</b>	Swindon Metal Recycling Limited
<b>Project:</b>	Bespoke Permit Variation Application
<b>Title</b>	Environmental Risk Assessment
<b>Issue</b>	1.1
<b>Date</b>	10.09.25
<b>Author</b>	<i>Shane Ronald Tasker AssocMCIWM PIEMA EA (IEMA Qualified Auditor)</i>

**Distribution List:**

Environment Agency

## **Table of Contents**

1. Introduction .....	1
1.2 Environmental Risk Assessment Scope .....	1
1.3 Environmental Risk Assessment Aims .....	1
2. Site Setting .....	2
2.1 Location .....	2
2.2 Designated Environmentally Sensitive Sites.....	2
2.3 Hydrogeology Aquifer Designation Map (Bedrock) .....	4
2.4 Hydrogeology Aquifer Designation Map (Superficial).....	4
2.5 Groundwater Source Protection Zones .....	4
2.6 Flood Risk.....	4
3. Methodology.....	5
3.1 Hazard Identification .....	5
3.2 Receptors.....	5
3.3 Pathways.....	8
3.4 Risk.....	8
4. Fugitive Emissions to Air.....	9
5. Noise & Vibration .....	12
6. Odour.....	17
7. Litter .....	20
8. Pests .....	21
9. Fugitive Emissions to Water .....	22
10. Conclusion .....	24

## 1. Introduction

1.1.1 This Environmental Risk Assessment (RA) has been produced on behalf of Swindon Metal Recycling Limited (the applicant), in line with current Environment Agency guidance, 'Risk Assessment for your Environmental Permit' available on Gov.uk, to support an application for a new bespoke environmental permit for a Waste operation under the Environmental Permitting (England and Wales) Regulations 2016 (as amended).

### 1.1.2 Application Proposals:

- Conversion of an existing Standard Rules Permit into a Bespoke Permit.
- Update the Permit to reflect the proposed Waste Exemption changes to include the include the manual/mechanical management of WEEE Wastes (currently authorised under a S2 Exemption), which will include the storage/ and treatment (handheld equipment only) of hazardous WEEE wastes and the mechanical processing of non-hazardous WEEE wastes (large domestic appliances through a press & shear).
- Update the Permit to reflect the proposed Waste Exemption changes to include the include the manual/mechanical management of Scrap Metals (currently authorised under a T9 Exemption).
- Authorise the acceptance, storage and transfer of Inert Wastes and HCI Wastes.
- Update the lists of EWC Codes to reflect the changes proposed.
- Increase the annual tonnage of the site to 40,000 tonnes per annum, which will include 25,000 tonnes for Scrap Metals and 2,000 tonnes for WEEE Wastes, 13,000 tonnes for End-of-Life Vehicles and 5,000 tonnes for HCI Wastes.

## 1.2 Environmental Risk Assessment Scope

1.2.1 This Environmental Risk Assessment has been produced in response to a request from the Environment Agency during the pre-application screening request in relation to the application.

## 1.3 Environmental Risk Assessment Aims

1.3.1 This assessment aims to consider potential environmental hazards associated with the activity, to identify sensitive receptors, which these may impact and determine the influence management practice has on reducing risk.

## 2. Site Setting

### 2.1 Location

2.1.1 The site is surrounded by commercial and industrial activities (North/East/South/West) that would not be deemed sensitive and no sensitive environmental receptors are within 1000 metres of the site. The nearest residential dwellings are over 200 metres away from the site (West).

### 2.2 Designated Environmentally Sensitive Sites

2.2.1 There are no European Designated Sites such as Ramsar, SSSI's, Protection Areas, Biosphere Reserve, Special Areas of Conservations and Local Nature Reserves within 1000 metres of the site as evidenced in Figures 1 & 2 below. Furthermore, the site is within any AQMA designation for NOX as evidenced in Figure 3 overleaf.

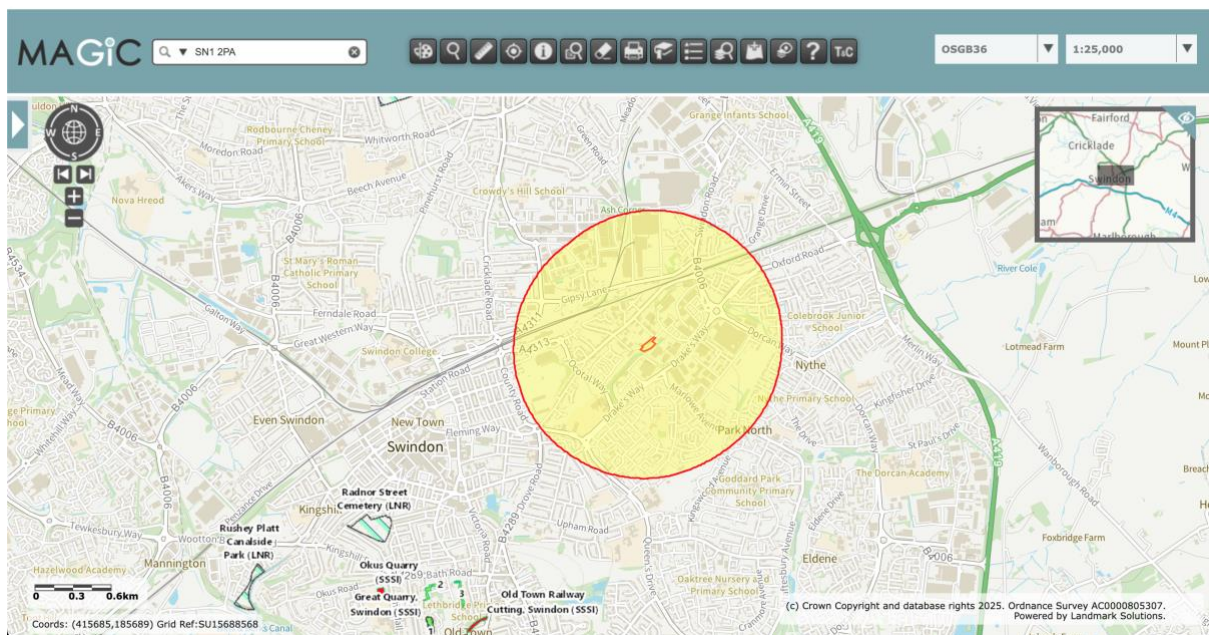


Figure 1: Map Showing Proposed Application Site & 1000 Metre Screening Buffer (Magic Interactive Tool)

05/02/2025, 10:33

Site Check Report Report generated on Wed Feb 05 2025  
You selected the location: Centroid Grid Ref: SU16818556  
The following features have been found in your search area:

**Local Nature Reserves (England) - points**  
No Features found

**Local Nature Reserves (England)**  
No Features found

**National Nature Reserves (England) - points**  
No Features found

**National Nature Reserves (England)**  
No Features found

**Ramsar Sites (England) - points**  
No Features found

**Ramsar Sites (England)**  
No Features found

**Proposed Ramsar Sites (England) - points**  
No Features found

**Proposed Ramsar Sites (England)**  
No Features found

**Sites of Special Scientific Interest Units (England) - points**  
No Features found

**Sites of Special Scientific Interest Units (England)**  
No Features found

**Sites of Special Scientific Interest (England) - points**  
No Features found

**Sites of Special Scientific Interest (England)**  
No Features found

**Special Areas of Conservation (England) - points**  
No Features found

**Special Areas of Conservation (England)**  
about:blank

---

05/02/2025, 10:33

No Features found

**Possible Special Areas of Conservation (England) - points**  
No Features found

**Possible Special Areas of Conservation (England)**  
No Features found

**Special Protection Areas (England) - points**  
No Features found

**Special Protection Areas (England)**  
No Features found

**Potential Special Protection Areas (England) - points**  
No Features found

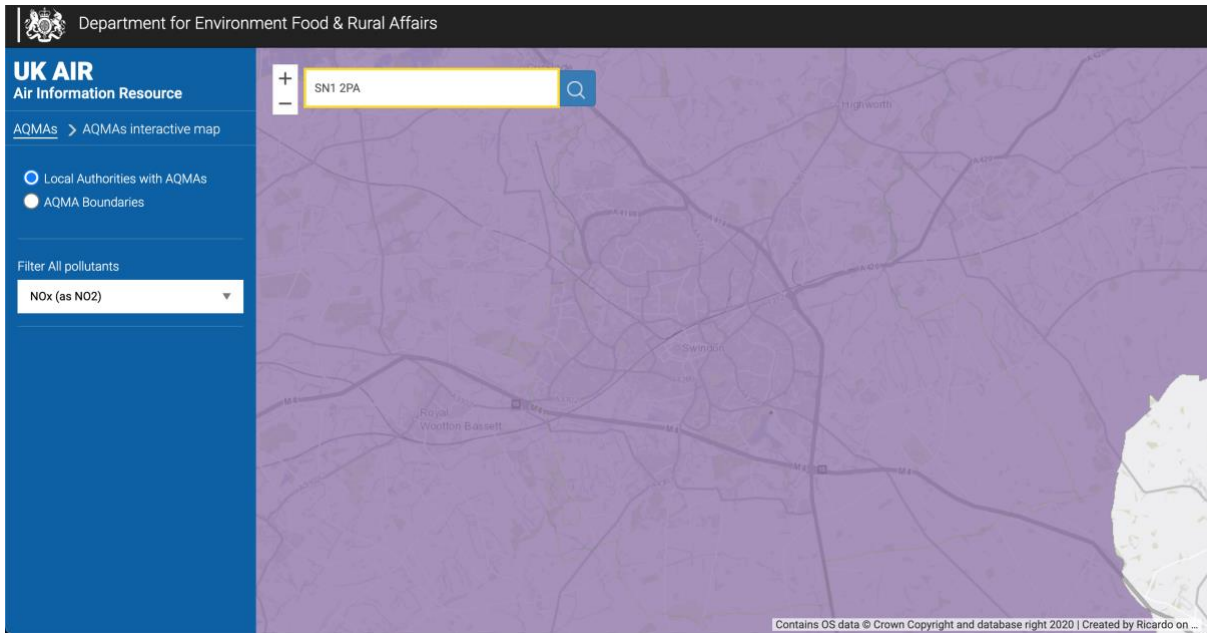
**Potential Special Protection Areas (England)**  
No Features found

**Biosphere Reserves (England) - points**  
No Features found

**Biosphere Reserves (England)**  
No Features found

**Source Protection Zones merged (England)**  
No Features found

**Figure 2: Screenshot of Site Check Report (Magic Interactive Tool)**



**Figure 3: Application Site in Relation to Air Quality Management Designations.**

### **2.3 Hydrogeology Aquifer Designation Map (Bedrock)**

2.3.1 The application site falls outside of a designation.

### **2.4 Hydrogeology Aquifer Designation Map (Superficial)**

2.4.1 A small section of the application site falls within a Secondary A designation.

### **2.5 Groundwater Source Protection Zones**

2.5.1 The site does not fall with a GPZ Designation.

### **2.6 Flood Risk**

2.6.1 The site falls within a Flood Zone 3 designation (an area with a high probability of flooding).

### **3. Methodology**

#### **3.1 Hazard Identification**

3.1.1 A hazard is something with potential to cause harm to something else.

#### **3.2 Receptors**

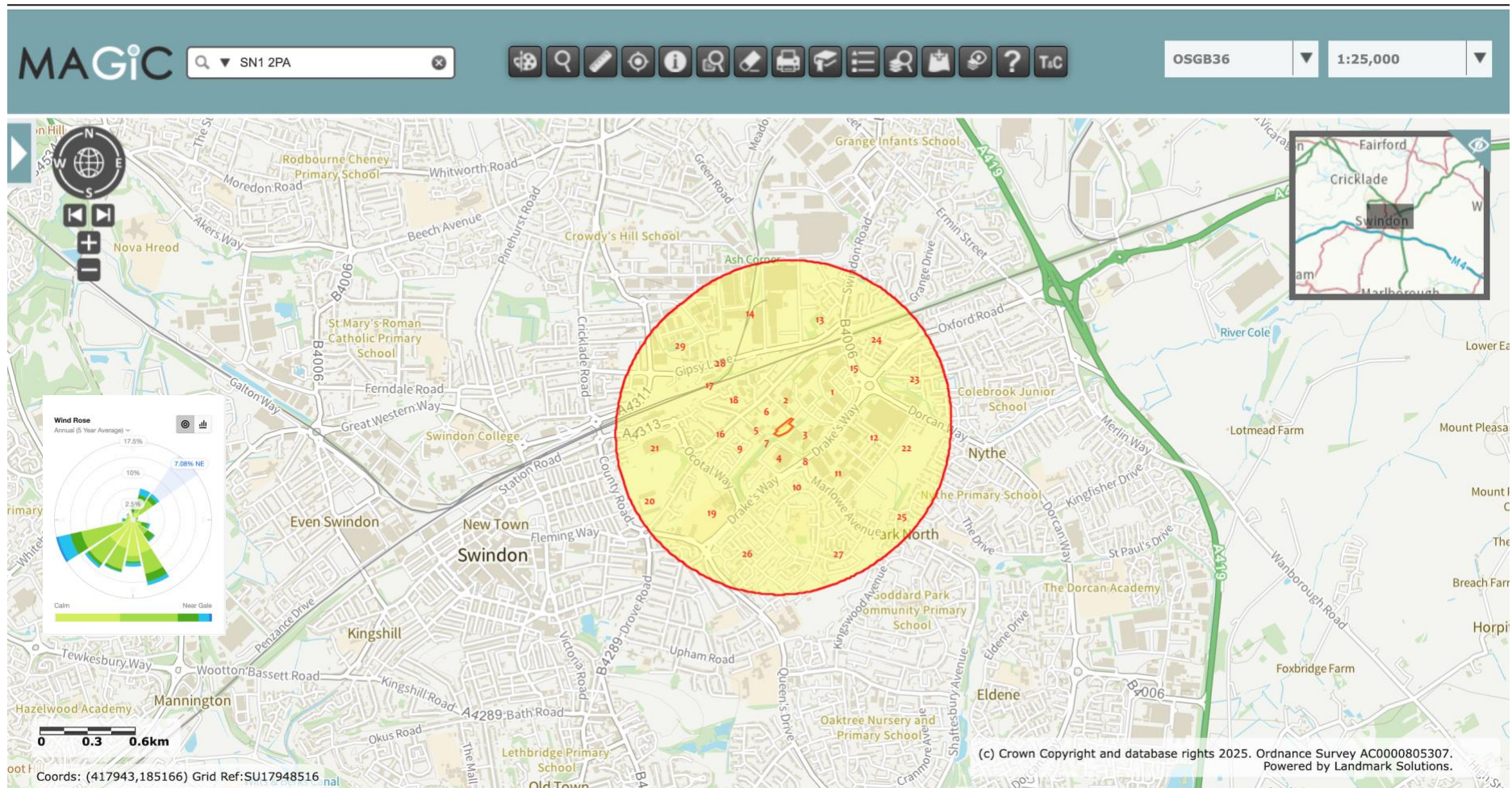
3.2.1 A receptor is the object (e.g., person, organism, resource or property) impacted by a hazard. When identifying receptors which may be at risk from the site, the following have been considered:

- Deciduous Woodland;
- Priority Habitats;
- Locations used to grow food or to farm animals or fish;
- Drain and sewer system;
- Factories and other businesses;
- Fields and allotments used to grow food;
- Roads and railways;
- Groundwater beneath the site;
- Residential Dwellings;
- Regionally important geological sites;
- Schools, hospitals and other public buildings;
- Conservation and habitat protected areas;
- Water; and
- Playing fields and playgrounds.

3.2.2 Based on the assessment of the site setting presented in Section 2 of this Environmental Risk Assessment, the following principal receptors have been identified for assessment as presented in Figure 4 & detailed in Table 2 overleaf.

**Table 1: Possible Receptors, Distance & Direction from Proposed Operation**

Receptor Reference	Receptor Description	Direction From Site	Wind Directional Travel Percentage % (Overall Meteorological Office Figures)	Approximate Distance From Site Boundary (Metres)
1	Commercial & Industrial	North East	13	371
2	Commercial & Industrial	North	10.30	90.3
3	Commercial & Industrial	South East	1.80	110
4	Commercial & Industrial	South	3.07	145
5	Commercial & Industrial	West	0.92	156
6	Commercial & Industrial	North West	5.93	125
7	River Cole	South	3.07	80
8	Road Infrastructure	South East	1.80	271
9	Residential	South West	7.08	200
10	Residential	South	3.07	266
11	Commercial & Industrial	South East	1.80	316
12	Commercial & Industrial	East	2.43	481
13	Residential	North East	13	732
14	Commercial & Industrial	North West	5.93	690
15	Road Infrastructure	North East	13	543
16	Road Infrastructure	West	0.92	232
17	Railway Infrastructure	North West	5.93	495
18	Commercial & Industrial	North West	5.93	312
19	St Joseph's Roman Catholic College	South West	7.08	489
20	Swindon Football Club	South West	7.08	885
21	Foundation Park	West	0.92	713
22	Rugby Club	South East	1.80	765
23	Residential	East	2.43	850
24	Residential	North East	13	676
25	Residential	South East	1.80	942
26	Residential	South West	7.08	748
27	Residential	South East	1.80	824
28	Road Infrastructure	North West	5.93	817
29	Gorse Hill School and Children Centre	North West	5.93	976



**Figure 4: Possible Receptors Identified within 1000m of the Application Site (Magic)**

### 3.3 Pathways

**Table 2: Pathways**

Receptor	Hazard	Pathway
Humans & Property	Odour	Transmitted through the air
	Dust and Particular Matter	Transmitted through the air
	Noise & Vibration	Transmitted through the air/ground
	Birds, Vermin & Insects	Physical travel
	Fire	Physical contact and spread
Groundwater	Contaminated Runoff	Infiltration through the ground
Surface Water	Contaminated Runoff	Direct discharge from site
Protected Conservation Sites	Dust and Particular Matter	Transmitted through the air
	Noise & Vibration	Transmitted through the air/ground.
	Fire	Physical contact and spread
Atmosphere	Dust and Particular Matter	Transmitted through the air

### 3.4 Risk

3.4.1 Assessment of risk is based on the probability of receptor exposure to the identified hazards and the consequence of exposure. The initial assessment of risk is made assuming no risk management practices with the proposed mitigation measures & management practices being factored into the overall assessment of the proposed operation resulting in a residual risk level.

## 4. Fugitive Emissions to Air

Hazard	Source	Pathway	Receptor	Probability of Exposure	Consequence	Magnitude of Risk	Risk Management	Residual Risk
Release of Particulate Matter (Dusts)	Dust from Delivery of Wastes	Air Transportation then inhalation	Local Human Population, Adjacent Industrial/ Commercial Activities Workforce & Sensitive Receptors as identified in <a href="#">Table 2</a> above.	Low	Low	Medium	Vehicles are sheeted during the transportation of all waste materials to the proposed site.  See separately submitted Dust Emissions Management Plan.  Dust Suppression equipment utilised to limit dust emissions (as deemed necessary).	Very Low
	Dust from Deposit of Wastes	Air Transportation then inhalation	Local Human Population, Adjacent Industrial/ Commercial Activities Workforce & Sensitive Receptors as identified in <a href="#">Table 2</a> above.	Low	Low	Medium	Wastes are deposited within the confines of the site perimeter benefitting from an enclosed site perimeter acting as physical barriers.  Inert & HCl wastes are not mechanically processed (simple unloading, storage and bulking activities), and bays benefit from micro netting deployed around them.  See separately submitted Dust Emissions Management Plan.  Dust Suppression equipment utilised to limit dust emissions (as deemed necessary).	Very Low
	Dust from Processing	Air Transportation	Local Human Population, Adjacent	Low	Low	Medium	Processing of materials conducted within an enclosed site perimeter acting as physical barrier to the transmission of	Very Low

	of Wastes	then inhalation	Industrial/ Commercial Activities Workforce & Sensitive Receptors as identified in <u>Table 2</u> above.				dusts.  It is not anticipated that the processing of metals will generate dusts as the baler/shear encloses the material during processing.  Inert & HCI wastes are not mechanically processed (simple unloading, storage and bulking activities), and bays benefit from micro netting deployed around them.  See separately submitted Dust Emissions Management Plan.  Dust Suppression equipment utilised to limit dust emissions (as deemed necessary).	
	Dust from Storage of Waste	Air Transportation then inhalation	Local Human Population, Adjacent Industrial/ Commercial Activities Workforce & Sensitive Receptors as identified in <u>Table 2</u> above.	Low	Low	Medium	Wastes stored within designated containers/bays/areas/buildings, with the site benefitting from an enclosed site perimeter acting as physical barriers.  Micro netting deployed around bays were Inert and HCI Wastes are stored.  Ongoing monitoring of material stockpiles throughout the working day.  See separately submitted Dust Emissions Management Plan.  Dust Suppression equipment utilised to limit dust emissions (as deemed necessary).	Very Low
	Dust from Loading of Wastes	Air Transportation then inhalation	Local Human Population, Adjacent	Low	Low	Medium	Loading of materials conducted within an enclosed site perimeter acting as physical barrier to the transmission of dust.	Very Low

			Industrial/ Commercial Activities Workforce & Sensitive Receptors as identified in <u>Table 2</u> above.				Materials are placed within removal vehicles and not dropped from a height and micro netting deployed around bays were Inert and HCI Wastes are stored. See separately submitted Dust Emissions Management Plan.  Dust Suppression equipment utilised to limit dust emissions (as deemed necessary).	
	Dust from Track Out	Air Transportation then inhalation	Local Human Population, Adjacent Industrial/ Commercial Activities Workforce & Sensitive Receptors as identified in <u>Table 2</u> above.	Low	Low	Medium	Surface cleaned/tidied on a regular basis to prevent the build up of particulates on the site surfacing. Vehicles wheels inspected and washed if dust is present. See separately submitted Environmental Management System.	Very Low

## 5. Noise & Vibration

Hazard	Source	Pathway	Receptor	Probability of Exposure	Consequence	Magnitude of Risk	Risk Management	Residual Risk
Noise & Vibrations from Vehicle Movements & onsite activities	Noise from Site Operation	Noise through the air and vibration through the ground	Local Human Population, Adjacent Industrial/ Commercial Activities Workforce & Sensitive Receptors as identified in <a href="#">Table 2</a> above.	Low	Medium	Medium	<p>No engine idling is permitted onsite; all engines are turned off whilst waiting to tip.</p> <p>Relevant plant and equipment will be fitted with appropriate sound attenuation and acoustic isolation and will be subject to regular inspection and maintenance schedules to maintain operational performance.</p> <p>Noise emissions are not considered to be a potential issue due to the nature of the operation.</p> <p>Any plant vibration issue will be resolved during the plant-commissioning period.</p> <p>See separately submitted Environmental Management System (Noise Emissions Management Procedures).</p> <p>Operatives are trained in noise management and the prompt reporting of any abnormal noise so that it can be rectified.</p>	Very Low
	Noise from Delivery of Wastes (i.e., Vehicle Movements)	Noise through the air and vibration through the ground	Local Human Population, Adjacent Industrial/ Commercial Activities Workforce &	Low	Medium	Medium	<p>All vehicles have silencing equipment fitted as standard, which are regularly serviced and have daily defect checks completed by drivers.</p> <p>Noise emissions are not considered to be a potential issue due to the nature of the</p>	Very Low

			Sensitive Receptors as identified in <u>Table 2</u> above.				<p>operation.</p> <p>As required by law, in order to hold an Operator's License, all vehicles undergo a safety inspection, including exhaust and silencer check, every 6 weeks (PMI).</p> <p>10mph speed limit enforced onsite; anyone speeding will be subject to disciplinary action.</p> <p>No engine idling is permitted onsite; all engines are turned off whilst waiting to tip.</p> <p>Relevant plant and equipment will be fitted with appropriate sound attenuation and acoustic isolation and will be subject to regular inspection and maintenance schedules to maintain operational performance.</p> <p>Any plant vibration issue will be resolved during the plant-commissioning period.</p> <p>See separately submitted Environmental Management System (Noise Emissions Management Procedures).</p> <p>Operatives are trained in noise management and the prompt reporting of any abnormal noise so that it can be rectified.</p>	
	Noise from Deposit of Wastes	Noise through the air and vibration through the ground	Local Human Population, Adjacent Industrial/ Commercial Activities Workforce &	Low	Medium	Medium	<p>All vehicles have silencing equipment fitted as standard, which are regularly serviced and have daily defect checks completed by drivers.</p> <p>Noise emissions are not considered to be a potential issue due to the isolated nature of</p>	Very Low

			<p>Sensitive Receptors as identified in <a href="#">Table 2</a> above.</p>				<p>the operation.</p> <p>As required by law, in order to hold an Operator's License, all vehicles undergo a safety inspection, including exhaust and silencer check, every 6 weeks (PMI).</p> <p>Vehicles are fitted with working exhaust silencing equipment.</p> <p>10mph speed limit enforced onsite; anyone speeding will be subject to disciplinary action.</p> <p>All transport arrangements management.</p> <p>The site perimeter benefits from an enclosed site perimeter acting as physical barriers.</p> <p>No engine idling is permitted onsite; all engines are turned off whilst waiting to tip.</p> <p>Relevant plant and equipment will be fitted with appropriate sound attenuation and acoustic isolation and will be subject to regular inspection and maintenance schedules to maintain operational performance.</p> <p>Any plant vibration issue will be resolved during the plant-commissioning period.</p> <p>See separately submitted Environmental Management System (Noise Emissions Management Procedures).</p> <p>Operatives are trained in noise management and the prompt reporting of any abnormal noise so that it can be rectified.</p>	
--	--	--	--	--	--	--	---	--

	Noise from Processing of Wastes	Noise through the air and vibration through the ground	Local Human Population, Adjacent Industrial/ Commercial Activities Workforce & Sensitive Receptors as identified in <a href="#">Table 2</a> above.	Low	Medium	Medium	<p>Processing of materials conducted within the confines of the site perimeter acting as physical barriers.</p> <p>Noise emissions are not considered to be a potential issue due to the nature of the operation.</p> <p>All Equipment/Machinery have daily defect checks completed by operators, with all defects reported to senior management for rectification.</p> <p>Relevant plant and equipment will be fitted with appropriate sound attenuation and acoustic isolation and will be subject to regular inspection and maintenance schedules to maintain operational performance.</p> <p>Any plant vibration issue will be resolved during the plant-commissioning period.</p> <p>See separately submitted Environmental Management System (Noise Emissions Management Procedures).</p> <p>Operatives are trained in noise management and the prompt reporting of any abnormal noise so that it can be rectified.</p>	Very Low
	Noise from Loading of Wastes	Noise through the air and vibration through the ground	Local Human Population, Adjacent Industrial/ Commercial Activities Workforce &	Low	Medium	Medium	<p>Loading of materials conducted within the confines of the site perimeter benefitting from an enclosed site perimeter acting as physical barriers.</p> <p>Noise emissions are not considered to be a potential issue due to the isolated nature of</p>	Very Low

			Sensitive Receptors as identified in <u>Table 2</u> above.				<p>the operation.</p> <p>Materials are placed within removal vehicles and not dropped from a height. Reducing the potential impact of noise &amp; vibration.</p> <p>Reving of grabs/wheeled loaders engines when loading will be kept to a minimum.</p> <p>When not in use all operational equipment is switched off not left idling.</p> <p>See separately submitted Environmental Management System (Noise Emissions Management Procedures).</p> <p>Operatives are trained in noise management and the prompt reporting of any abnormal noise so that it can be rectified.</p>	
--	--	--	--	--	--	--	--	--

## 6. Odour

Hazard	Source	Pathway	Receptor	Probability of Exposure	Consequence	Magnitude of Risk	Risk Management	Residual Risk
Release of Particulate Matter (Odours)	Odour from Delivery of Wastes	Air Transportation then inhalation	Local Human Population, Adjacent Industrial/ Commercial Activities Workforce & Sensitive Receptors as identified in <a href="#">Table 2</a> above.	Medium	Medium	Medium	<p>Vehicles are sheeted/covered during the transportation of all waste materials to the proposed site.</p> <p>Odorous wastes will be rejected.</p> <p>Wind conditions will be monitored &amp; Operations may cease until conditions improve.</p>	Low
	Odour from Deposit of Wastes	Air Transportation then inhalation	Local Human Population, Adjacent Industrial/ Commercial Activities Workforce & Sensitive Receptors as identified in <a href="#">Table 2</a> above.	Medium	Medium	Medium	<p>HCI &amp; inert wastes are deposited in the waste Acceptance area which are constantly monitored during the unloading process.</p> <p>Operational areas benefit from concrete retaining walls deployed around operational areas, as well as a number of adjacent buildings acting as physical barriers.</p> <p>Storage time limits as specified in the submitted Fire Prevention Plan Document.</p> <p>In the event that malodorous wastes are inadvertently accepted, they will be isolated within an enclosed skip and removed from the site within 72 hours or arriving.</p>	Low

							Management complete daily spot checks of the Depot, which includes the identification of malodorous wastes.	
	Odour from Processing of Wastes	Air Transportation then inhalation	Local Human Population, Adjacent Industrial/ Commercial Activities Workforce & Sensitive Receptors as identified in <a href="#">Table 2</a> above.	Medium	Medium	Medium	<p>Management complete daily spot checks of the Depot, which includes the identification of malodorous wastes.</p> <p>Operational areas benefit from concrete retaining walls deployed around operational areas, as well as a number of adjacent buildings acting as physical barriers.</p> <p>Storage time limits as specified in the submitted Fire Prevention Plan Document.</p> <p>In the event that malodorous wastes are identified during the handling operations, they will be isolated within an enclosed skip and removed from the site within 48 hours or arriving.</p> <p>Odorous wastes will be rejected.</p>	Low
	Odour from Storage of Waste	Air Transportation then inhalation	Local Human Population, Adjacent Industrial/ Commercial Activities Workforce & Sensitive Receptors as identified in <a href="#">Table 2</a> above.	Medium	Medium	Medium	<p>Wastes stored within designated containers/bays/areas.</p> <p>Operational areas benefit from concrete retaining walls deployed around operational areas, as well as a number of adjacent buildings acting as physical barriers.</p> <p>Management complete daily spot checks of the Depot, which includes the identification of malodorous wastes.</p> <p>Storage time limits as specified in the submitted Fire Prevention Plan Document.</p>	Low

	Odour from Loading of Wastes	Air Transportation then inhalation	Local Human Population, Adjacent Industrial/ Commercial Activities Workforce & Sensitive Receptors as identified in <u>Table 2</u> above.	Medium	Medium	Medium	<p>Only competently trained operatives complete loading operations to ensure they are carried out efficiently and effectively.</p> <p>Operational areas benefit from concrete retaining walls deployed around operational areas, as well as a number of adjacent buildings acting as physical barriers.</p> <p>Management complete daily spot checks of the Depot, which includes the identification of malodorous wastes.</p> <p>Vehicles are sheeted during the transportation of all waste materials to the proposed site.</p>	Low
--	------------------------------	------------------------------------	---	--------	--------	--------	---	-----

## 7. Litter

Hazard	Source	Pathway	Receptor	Probability of Exposure	Consequence	Magnitude of Risk	Risk Management	Residual Risk
Release of Litter	Litter Generated From Onsite Activities	Transport Through the Air & Over Land	Local Human Population, Adjacent Industrial/ Commercial Activities Workforce & Sensitive Receptors as identified in <a href="#">Table 2</a> above.	Low	Low	Low	<p>The site will be carefully managed including good housekeeping procedures and regular checks will be made within and around the site for any litter/debris.</p> <p>Reaction time: Public highway immediately (within 1 hour of detection &amp; within the permitted boundary by the end of the working day.</p> <p>Wastes are stored within designated containers/bays/areas around the site.</p> <p>Operatives are trained in Emissions Management Procedures.</p> <p>See separately submitted Environmental Management System Emissions Management Section Litter Procedures (Contingency Plan).</p>	Low

## 8. Pests

Hazard	Source	Pathway	Receptor	Probability of Exposure	Consequence	Magnitude of Risk	Risk Management	Residual Risk
Pests (flies, vermin, birds) attracted to waste material	Pests	Transport Through the Air & Over Land	Local Human Population, Adjacent Industrial/ Commercial Activities Workforce & Sensitive Receptors as identified in <a href="#">Table 2</a> above.	Low	Low	Low	<p>Food waste prohibition notice.</p> <p>Wastes will be rejected if any loads appear to have pest infestations.</p> <p>The site will be carefully managed including good housekeeping procedures and regular checks will be made within and around the site for any litter/debris to prevent the attraction of pests.</p> <p>Wastes are stored within designated containers/bays/areas.</p> <p>Operatives are trained in Emissions Management Procedures.</p> <p>See separately submitted Environmental Management System Emissions Management Section Pests Procedures (Contingency Plan).</p>	Very Low

## 9. Fugitive Emissions to Water

Hazard	Source	Pathway	Receptor	Probability of Exposure	Consequence	Magnitude of Risk	Risk Management	Residual Risk
Contaminated Surface Water Run Off/Fire Water Run Off	Contamination from Materials stored onsite	Percolation through soils, direct run off from site across the ground and entering surface water drains or natural channels/ditches or groundwater	Local Human Population, Adjacent Industrial/ Commercial Activities Workforce & Sensitive Receptors as identified in <a href="#">Table 2</a> above.	Low	Medium	Medium	<p>Senior Management inspects conditions of hardstanding areas &amp; impermeable concrete surfacing regularly &amp; any noticeable deterioration is rectified as soon as practicable.</p> <p>Regular inspections of equipment/machinery/vehicles will identify leaks at the earliest possible convenience.</p> <p>Fuels/oils stored in bunded areas with a capacity to hold 110% of the largest containers capacity.</p> <p>All wastes are stored on an impermeable surface with sealed drainage.</p> <p>See Fire Prevention Plan for the site's strategies in the event of a waste fire.</p> <p>Leakage/Spillage Procedure details in submitted Environmental Management System.</p>	Low
Chemicals & Oils Stored Onsite	Loss of containment on site	Percolation through soils, direct run off from site across the ground and entering surface water drains or natural	Local Human Population, Adjacent Industrial/ Commercial Activities Workforce & Sensitive	Medium	Medium	Medium	<p>Fuels/oils stored in bunded areas with a capacity to hold 110% of the largest containers capacity.</p> <p>Regular inspections of equipment/machinery/vehicles &amp; the chemical storage areas will identify leaks at the earliest possible convenience.</p>	Low

		channels/ ditches or groundwater	Receptors as identified in <u>Table 2</u> above.				Impermeable concrete surface to drainage system.	
Leakage & Spillage	Loss of containment on site	Percolation through soils, direct run off from site across the ground and entering surface water drains or natural channels/ ditches or groundwater	Local Human Population, Adjacent Industrial/ Commercial Activities Workforce & Sensitive Receptors as identified in <u>Table 2</u> above.	Medium	Medium	Medium	Regular inspections of equipment/machinery/vehicles will identify leaks at the earliest possible convenience.  Leakage/Spillage Procedure details in submitted Environmental Management System.  Impermeable concrete surface to drainage system.	Low

## 10. Conclusion

10.1.1 This Environmental Risk Assessment has been undertaken as described by the regulatory guidance. The assessment is provided as part of the application for a Bespoke Environmental Permit on behalf of Swindon Metal Recycling Limited.

10.1.2 This qualitative risk assessment has considered fugitive emissions, noise & vibration, odour, litter, pests, fugitive emissions to water & habitats. The assessment concludes that with the implementation of the risk management measures described above & those contained in supplementary Fire Prevention Plan and the Environmental Management System Document the proposed licence modification is not likely to cause a significant environmental impact and no further assessment is required.