

## Slough STC Bioaerosol Risk Assessment

Document no: TW\_STC\_EPR\_02a\_SGH\_APPF  
Revision no: Revision 4

Thames Water Utilities Ltd  
EPR/LP3738LC

Sludge Treatment Centre Permitting  
8 November 2023



## Slough STC Bioaerosol Risk Assessment

**Client name:** Thames Water Utilities Ltd  
**Project name:** Sludge Treatment Centre Permitting  
**Client reference:** EPR/LP3738LC  
**Document no:** TW\_STC\_EPR\_02a\_SGH\_APPF  
**Revision no:** Revision 4  
**Date:** 8 November 2023  
**Project no:** B22849AM  
**Project manager:** Harindra HG Gunasinghe  
**Prepared by:** Mark McAree  
**File name:** TW\_STC\_EPR\_02a\_SGH\_APPF.docx

## Document history and status

Revision	Date	Description	Author	Checked	Reviewed	Approved
R0	11.05.2022	Slough STC Bioaerosol Risk Assessment	Heather England-Kerr			
R1	28.02.2023	Updated document for re-submission	JK	MM	MM	HG
R2	23.06.2023	Final version for re-submission	JK	MM	MM	HG
R3	29.06.2023	Updated with client comments	JK	MM	MM	HG
R4	08.11.2023	Sampling points added	JK	MM	MM	HG

## Distribution of copies

Revision	Issue approved	Date issued	Issued to	Comments

### Jacobs U.K. Limited

7th Floor, 2 Colmore Square  
38 Colmore Circus, Queensway  
Birmingham, B4 6BN  
United Kingdom

T +44 (0)121 237 4000  
www.jacobs.com

Copyright Jacobs U.K. Limited © 2023.

All rights reserved. The concepts and information contained in this document are the property of the Jacobs group of companies. Use or copying of this document in whole or in part without the written permission of Jacobs constitutes an infringement of copyright. Jacobs, the Jacobs logo, and all other Jacobs trademarks are the property of Jacobs.

NOTICE: This document has been prepared exclusively for the use and benefit of Jacobs' client. Jacobs accepts no liability or responsibility for any use or reliance upon this document by any third party.

## Contents

<b>1. Introduction.....</b>	<b>4</b>
1.1 Site description .....	4
1.2 Site Activities.....	4
1.3 Regulatory requirements .....	5
1.4 Bioaerosols .....	5
<b>2. Bioaerosol risk assessment.....</b>	<b>7</b>
2.1 Introduction.....	7
2.2 Processing equipment and techniques.....	7
2.3 Potential Sources .....	9
2.4 Pathways.....	10
2.5 Receptors.....	11
2.6 Risk Assessment.....	12
2.7 Abnormal Situations .....	15
<b>3. Conclusions.....</b>	<b>16</b>

## Appendices

<b>Appendix A. Site Location Plan .....</b>	<b>17</b>
<b>Appendix B. Potential Bioaerosol Emission Points.....</b>	<b>18</b>
<b>Appendix C. Receptors within 250m of potential emission points.....</b>	<b>19</b>

## Tables

No table of contents entries found.

## Figures

No table of contents entries found.

## 1. Introduction

The purpose of this Bioaerosols risk assessment is to provide supplementary information to support the permit variation application for a bespoke installation permit for the Slough Sludge Treatment Centre (STC), EPR/LP3738LC.

### 1.1 Site description

The site is located immediately south of the M4 motorway and to the south of the conurbation of Slough. To the west, east and south of the site are open green spaces, agricultural land and the Jubilee River.

The site location plan is shown in Appendix A and the address of the installation is:

Slough STW;

Wood Lane,

Slough,

Berkshire,

SL1 9EB.

The majority of the site and the STC sits within Flood Zone 1 (>1:1000 annual probability of river flooding) however a small area of southern portion of the site is within a Flood Zone 2 and 3 area with a medium/high annual probability of flooding (between a 1:100 and 1:1000 annual probability of flooding) and land having a 1:100 or greater annual probability of flooding.

The site is outside of an Air Quality Management Area (AQMA) but is within a Zone 2 Source Protection Zone (SPZ). There are five habitat sites within the appropriate distance of the STC including three Special Areas of Conservation (SACs), one Ramsar site and one Special Protection Area (SPA), a local wildlife site, ancient woodlands and one Local Nature Reserve (LNR). There are two areas of ancient wood land within 2 km of the site. There are six non-statutory designated local wildlife sites (LWS) within 2 km of the site. A coastal and floodplain grazing marsh, which is a protected habitat can be found adjacent to the south of the site. Three protected species can be found within 500m of the site, consisting of protected species (non-fish), protected fish and protected fish migratory routes.

### 1.2 Site Activities

Slough Sludge Treatment Centre (STC), is located at the Slough Sewage Treatment Works (STW), operated by Thames Water Utilities Ltd (Thames Water). The STC undertakes the biological treatment of sewage sludge, both indigenous and imported from other wastewater treatment sites, by anaerobic digestion, with a capacity above the relevant thresholds for requiring an environmental permit. It also includes the importation of specified wastes to the works inlet for treatment through the Urban Waste Water Treatment directive (UWWTD) regulated works.

There are a number of directly associated activities, including the operation of a biogas fuelled CHP engine for the generation of electricity and heat at the site.

The site includes the following Directly Associated Activities (DAA):

- Imports of waste, including sludge from other sewage treatment works and imports of municipal liquid or sludges similar in composition to UWWTD derived materials.
- Blending of indigenous sludges and imported wastes/waste sludge prior to treatment.
- Storage of digestate prior to de-watering.
- Dewatering of digested sewage sludge.
- Transfer of treated dewatering liquors via site drainage back to the head of the sewage treatment works.
- Transfer of surface water runoff back to the head of the sewage treatment works.
- Storage of dewatered digested sludge cake prior to offsite recovery.
- Storage of biogas.

- Combustion of biogas in a Medium Combustion Plant Directive (MCPD) and Specified Generator (SG) compliant biogas CHP engine and boilers units.
- Emergency flare.
- Operation of siloxane filter plant.
- Storage of diesel.
- Storage of wastes, including waste oils.
- Storage of raw materials.

The facility can treat up to 1,355,000m<sup>3</sup> of sludge per year (equating to approximately 1,355,000 wet tonnes). The sludge treatment facility has a total maximum treatment input of 742m<sup>3</sup> per day (equating to approximately 742 wet tonnes per day).

Some of this throughput is sludge, which is subject to dewatering and storage as treated sludge cake at the site prior to removal from site for application to land. Within the area covering the permitted activities, there are a number of odour control units linked to specific tanks or processes which produce potentially odorous air. These units treat the air through a variety of means, including use of biofilters.

The anaerobic digestion process gives rise to biogas, a mixture of biomethane and carbon dioxide, in a mixture with trace components. This biogas is combusted through CHP engines at the site with excess biogas being subject to flaring. The biogas handling system is equipped with a number of pressure relief valves (PRVs) which activate as a safety precaution when there is excess biogas over what the CHP engine and flare can handle.

### 1.3 Regulatory requirements

A permit application has been submitted based on the Environment Agency's recent conclusion that sewage sludge is a waste and therefore the treatment of sewage sludge by anaerobic digestion for recovery is a permissible activity under Schedule 1 of the EPR 2016, specifically Chapter 5, Section 5.4, Part A 1(b)(i).

For new permits, if the site is within 250m of sensitive receptors then there is a requirement to monitor bioaerosols in accordance with the EA technical guidance note<sup>1</sup> 'M9: environmental monitoring of bioaerosols at regulated facilities'. M9 describes bioaerosols and the risks that they pose, as well as identifying potential sources within biological treatment facilities.

The Slough Sludge Treatment Centre installation is within 250m of sensitive receptors, as defined by M9. These are detailed in Section 2.5 of this report.

### 1.4 Bioaerosols

Bioaerosols are found naturally within the environment. They consist of airborne particles that contain living organisms, such as bacteria, fungi and viruses or parts of living organisms, such as plant pollen, spores and endotoxins from bacterial cells or mycotoxins from fungi. The components of a bioaerosol range in size from around 0.02 to 100 micrometres (µm) in diameter. The size, density and shape of a bioaerosol will affect its behaviour, survivability and ultimately its dispersion in the atmosphere.

Bioaerosols are easily breathed into the human respiratory system, potentially causing allergic responses and inflammation. They also have the potential to cause eye irritation, gastrointestinal illness and dermatitis.

Bioaerosols are associated with composting, anaerobic digestion and mechanical biological treatment, which are the main processes used to treat organic wastes in the UK. As organic waste material breaks down it goes through different temperature dependent stages that are dominated by certain groups of bacteria and fungi. Bacteria are the most numerous group of microorganisms. *Aspergillus fumigatus* is a mesophilic fungus that is thermotolerant and is present throughout the different stages of the organic breakdown process. This fungus can cause severe respiratory infection if inhaled.

The dependence on microorganisms to degrade organic material and the way in which the material is processed make biological treatment facilities a potential source of bioaerosols. However, we note that the

---

<sup>1</sup> Environment Agency. July 2018. M9: Environmental monitoring of bioaerosols at regulated facilities v2, July 2018

2012 EA guidance note<sup>2</sup> for developments requiring planning permission and environmental permits states that the EA do not consider bioaerosols from anaerobic digestion to be a serious concern. This is due to the fact, that anaerobic digestion is generally a wet process undertaken in enclosed tanks and equipment, whereas composting is often undertaken using open systems such as windrows and static piles.

The Slough Sludge Treatment Facility does not undertake any aerobic composting activities and the anaerobic digestion process on site, undertaken in the primary digesters, is an enclosed process with all produced gases captured within the biogas system.

### 1.4.1 High Risk Activities

The M17 guidance document (section 3.3.3), outlines a number of potential sources and release mechanisms of particulate matter, including bioaerosols from waste management facilities. These potential sources are not graded for importance within M17, and include: the movement of waste to and from the facility; storage of waste (under certain conditions) on site; the handling and processing of waste materials e.g. shredding of green waste, turning of windrows, daily cover; and wind scouring of waste surfaces.

In terms of potential sources of bioaerosol release at the Slough STC, only the storage of sludge cake and export i.e. the handling and storage of waste (under certain conditions) and wind scouring of waste surfaces would apply. Sewage waste to site is received via pipes and is contained and shredding of waste or turning of stockpiles is not undertaken

### 1.4.2 Relevant Thresholds

Based on the accepted Levels at sensitive receptors as set out in the Environment Agency M17 guidance<sup>3</sup> 'M17 Monitoring of particulate matter in ambient air around waste facilities', and in line with the Governments regulatory position statement (RPS) 209 outlining when a specific bioaerosol risk assessment and/or monitoring is required and use of the Environment Agency Technical Guidance Note M9<sup>4</sup>; key bioaerosols of interest and their respective threshold Levels (including background) at sensitive receptors are outlined below:

- Total bacteria: 1000 cfu/m<sup>3</sup>
- *Aspergillus Fumigatus*: 500 cfu/m<sup>3</sup>

---

<sup>2</sup> Environment Agency. October 2012. Guidance for developments requiring planning permission and environmental permits

<sup>3</sup> Environment Agency. 2013. Technical Guidance Note (Monitoring) M17: Monitoring Particulate Matter in Ambient Air around Waste Facilities, v2, July 2013 <https://www.gov.uk/government/publications/m17-monitoring-of-particulate-matter-in-ambient-air-around-waste-facilities>

<sup>4</sup> Environment Agency. 2018. Technical Guidance Note (Monitoring) M9: Environmental monitoring of Bioaerosols at regulated facilities, v2, July 2018

## 2. Bioaerosol risk assessment

### 2.1 Introduction

A source-pathway-receptor risk assessment has been undertaken to appraise the potential for risk to human health at sensitive receptors within the relevant distance from operations at the Slough Sludge Treatment Centre. This risk assessment follows a standardised approach, namely:

- Hazard identification: what sources of bioaerosols are present on site.
- Exposure assessment: what are the mechanisms or pathways allowing bioaerosols to migrate off site and reach a sensitive receptor; and
- Risk evaluation: who is potentially exposed to bioaerosols; what is the probability, magnitude, and duration of that exposure.

The assessment describes:

- The processing techniques and equipment used within the installation.
- Feedstock, tonnages processed and any seasonal variations.
- Potential sources of bioaerosols.
- The site layout, including vegetation around the site.
- What is beyond the site boundaries and the location of sensitive receptors; and
- Local wind direction data.

### 2.2 Processing equipment and techniques

#### 2.2.1 Waste Reception

Waste is delivered into the covered works inlet channel, from tanker deliveries through an enclosed connection, before being processed through the STW outside of the permit boundary. Incoming sludge, in a mixture with other sewerage material is subjected to preliminary treatment through screening and degritting, before separation of sludge from the main flow in the primary settlement tanks. Settled sludge is transferred to the two Picket Fence Thickeners (PFT), both of the PFT tanks are of steel reinforced fibreglass construction, covered and connected to an odour control unit (OCU) for odour abatement.

Sludge thickening within the PFTs falls within the scope of the STC permit and within the scope of this risk assessment. Surplus activated sludge from elsewhere in the works is dewatered inside of a building before it is pumped to the Sludge Blending Tank.

Imported sludge may also enter the process, via tanker transfer from other TWUL sewage treatment works or from third parties. These imports are transferred by sealed pipeline from tankers into an Imported Sludge Holding Tank within the process. Sludge is transferred from the Imported Sludge Holding Tank to the Sludge Blending Tank.

If a sludge spillage occurs, operators will carry out clean up as soon as possible. If the spillage is caused by a lorry or tanker, the driver is responsible for cleaning up the spill before leaving site. If a lorry or tanker left a spillage behind, operators will log and report any incident observed and the driver or company involved will be asked to return to the site immediately to clean up. Significant spillage incidents will be recorded in the site diary. Lorry and tanker drivers are required to hose down any spillage after each loading. No wheel wash facility is available on the site, but a standpipe is available and can be utilised to wash spillage from vehicles as required.

Import of waste that is non-hazardous treated sludge cake from other works, for temporary storage on the site cake pad, pending offsite recovery also takes place at this site. This waste is imported directly to the cake pad.

#### 2.2.2 Waste Treatment

The thickened sludge is pumped via a dedicated sludgeline to a covered Sludge Blending Tank, where it is mixed with thickened SAS and any imported sludge from other works, the Sludge Blending Tank is an enclosed concrete tank, linked to an Odour Control Unit (OCU). From the Sludge Blending Tank, sludge is

transferred to one of six primary anaerobic digesters at the site. Four have floating roofs, and two have fixed roofs. Following digestion, digested sludge is pumped to the Digested Sludge Holding Tanks and then to the Secondary Digester Tanks. There are three Secondary Digester Tanks, which are open topped. Pressure relief valves (PRVs) are fitted to the roof of each tank for safety.

Anaerobic digestion of sludge takes place within a closed system, so the risk of bioaerosols from this source is low.

The digested sludge from Secondary Digester Tanks is then pumped via an above ground sludge line to the centrifuge feed pumps for dewatering, there are two centrifuges with only one operational at one time.

Biogas from the primary and secondary digesters is collected into biogas holder and either used to fuel the Combined Heat and Power plant (CHP), heating boilers or combusted in an enclosed flare.

Odorous air from a number of locations is continuously extracted to an Odour Control Unit (OCU). The air is treated within the OCUs to remove odour and bioaerosols using various methods such as biofilters and activated carbon (described in Section 2.3), before it is released to the atmosphere.

Biofilters are considered to be a potential emission source for bioaerosols. Scrubbers are unable to remove 100% of bioaerosols, so in any location where there is a biofilter there is still the potential for bioaerosol emission, however it is expected to be minimal.

Carbon filters are considered to effectively remove bioaerosols and so any OCUs using carbon filters are not considered to be a source of bioaerosols. It should however be noted that where carbon filters are used in combination with biofilters, whilst any emission of bioaerosols are expected to be minimal the possibility of emission cannot be entirely ruled out.

### **2.2.3 Digested cake**

De-watered digested sludge cake is carried by a conveyor and deposited in a concrete surfaced and walled cake pad. Conveyors are covered to minimise the risk of cake escaping. The cake is deposited from the conveyor onto the bay surface from a distance of approximately 2m.

The dewatered digested sludge cake is transferred to the engineered cake maturation/storage pad prior to removal from site under the Sludge Use in Agriculture Regulations 1989 (SUiAR), and in accordance with the Biosolids Assurance Scheme (BAS). Centrate is returned via the site drainage system to the works inlet.

Digested sludge cake is then loaded onto trucks using a loading shovel and removed off site for agricultural land spreading. There is considered to be a low risk of bioaerosols from digested sludge cake on the cake pad, despite the proximity of sensitive receptors within 250m of the cake pad who may be present for more than 6 hours at a time. The sludge cake is deposited wet and moved to storage, where it forms a crust within 24 hours. It is not disturbed, until it is taken for export.

### **2.2.4 Odour Control Units**

Sewage treatment works have a number of potentially odorous sources within their boundary. During site assessment and design, some of these sources may be linked to odour control units (OCUs) to treat potentially odorous compounds given off by the process. These units take air extracted from above tanks or process areas, and treat the odours compounds by means of different methodologies dependent upon the nature of the odours compounds. Treatment methodologies include activated carbon systems; biofilters or other biological treatment; and chemical scrubbing. Individual OCUs may use one or more of these methodologies in series.

Under the M9 guidance documents, the Environment Agency has identified that biofilters may give rise to bioaerosols during operation. Biofilters are considered to be a potential emission source for bioaerosols, whether used in isolation or with a second methodology.

### **2.2.5 Seasonality**

Sewage treatment is undertaken at the STC on a continuous basis, 24 hours a day 365 days of the year. Digested sludge cake is, therefore, produced daily and at similar levels across the whole year.



However, digested sludge cake storage on site, both in relation to duration and volume, varies across time. Digested sludge cake is removed from site for spreading to land. Land spreading is controlled under the Biosolids Assurance Scheme and Sludge Use in Agriculture Regulations (1989), as well as the Farming Rules for Water. As such, digested sludge cake will remain on site longer during wet periods and during autumn and winter periods where there would be limited uptake of nutrients from the solids. This means that there will be more digested sludge cake within the storage bays during the autumn and winter, under normal conditions, than during the summer period.

## 2.3 Potential Sources

There are seventeen point-source emissions to air from the processes within the installation boundary, at the following locations as described in the main permit. The references and source descriptions match those in the permit:

Table 1: Point source emissions to air

Air emission reference	Source	In scope as a source?
A2	Auxiliary Boiler 2a	x
A3	Auxiliary Boiler 2b	x
A4	Auxiliary Boiler 3	x
A5	Emergency Flare 1	x
A6	Emergency Flare 2	x
A9	BC1 CHP Engine (MWM TCG2016V12)	x
A12	OCU A - Digester Feed Tank	x
A13	OCU C - High Level Pumping Station OCU	x
A14	OCU E - Digested Sludge Holding Tank OCU	✓
A15	OCU F - Picket Fence Thickeners and SAS Belts OCU	✓
A16	Biogas Holder PRV	x
A17	Digester PRV	x
A18	Digester PRV	x
A19	Digester PRV	x
A20	Digester PRV	x
A21	Digester PRV	x
A22	Digester PRV	x

The location of these emission points is shown on the site layout plan at the emission plan in Appendix B.

The cake pad and storage area are also considered source of bioaerosols emissions and is shown on the plan in Appendix B, however this is considered a diffuse source and not a point source and is therefore not included within the above table.

### 2.3.1 Source Assessment

The boilers (Emission points A2, A3 and A4), emergency flares (Emission points A5 and A6) and CHP engine (point A9) combust the produced biogas at high temperatures (in excess of 450°C). Due to the combustion of the biogas, these points can be discounted as sources of bioaerosols emissions.

There are four no. odour control units (OCUs) (point A12-A15) serving the sludge treatment facility (within the installation boundary), associated with the Sludge Blending Tank, the High Level Pumping Station, the Digested Sludge Holding Tank and the Picket Fence Thickeners.

- OCUs A and C use a large size carbon filter and 2 direct drive extract fans.
- OCU E consists of a constantly irrigated large size lava rock bio-filter, 2 polishing carbon filters, and 2 direct drive extract fans.
- OCU F consists of 3 intermittently irrigated medium size calcified seaweed bio-filters, and 2 direct drive extract fans.

Biofilters are considered to be a potential emission source for bioaerosols, whether used in isolation or with a second methodology.

The Pressure Relief Values (PRVs) (points A16-A22) are normally closed and do not emit to atmosphere. However, in the event of an abnormal situation such as the failure of the flare stack and/or CHP, the PRV's would open to relief excess biogas pressure, potentially resulting in the release of bioaerosols, while the problem is rectified. While the problem is rectified, biogas generation is reduced by reducing or inhibiting the digester feed. These abnormal events are unlikely, temporary, and infrequent due to the extensive monitoring and maintenance programmes undertaken at the site as well as the procedures and warning systems in place.

In addition to the point sources identified above, there is also an unchanneled potential release (diffuse source) from treated, dewatered sewage cake which is stored on the cake pad at the site.

### 2.3.2 Risk

The overall treatment process is considered to be a low source of bioaerosols as discussed above, there are a number of control measures in place at the site to reduce and contain emissions of bioaerosols. These control measures are regularly maintained to sustain their efficacy and reduce the risk of equipment failure. The greatest probability of exposure from bioaerosols emitted from the site is from uncovered operations such as the cake bay and cake conveyor.

However, the digested sludge cake is at the end of the sludge treatment process, and is moist on deposition from the conveyor to the pad. The cake is managed by dozer and taken to the cake storage bays, which are controlled row height and arrangement and requires no further treatment, prior to export onto before being deposited on agricultural land. It and therefore is likely to have low concentrations of bioaerosols, and therefore, the probability of exposure from this source is also minimised.

In addition, all storage tanks, treatment tanks and associated pipework are enclosed. The wet wells used to receive incoming sludge are below ground and covered with metal plates. Sludge screening and dewatering takes place in enclosed units. In addition, the PRVs are only opened in abnormal situations which are temporary and unlikely.

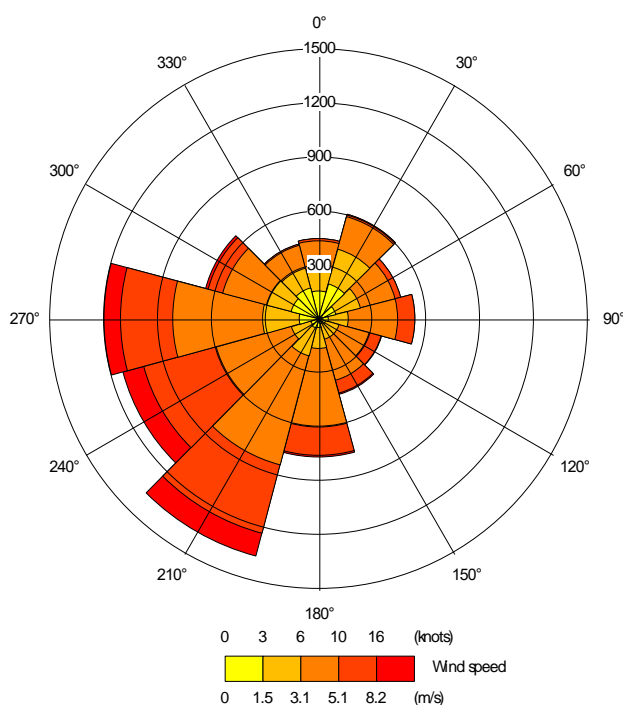
## 2.4 Pathways

Bioaerosols are very small and light in weight so can easily be transported by the wind from their source to a human health receptor where they may be inhaled.

The 2019 wind rose for the most representative meteorological site, Heathrow airport (located approximately 13.5 km South East of the Site), is shown in Figure 1.

The wind rose data shows that the site experiences strong prevailing south westerly winds, predominantly in excess of 6 knots.

**Figure 1 – Heathrow Airport Wind rose (2019)**



Because of the dilution effect in open air, bioaerosol concentrations fall away rapidly with distance from the source. It has been shown by research by the HSE<sup>5</sup> that by 100 to 200m away, the bioaerosol concentration has mostly returned to background levels. Between 50m and 100m distances downwind of the process, bioaerosol concentrations were substantially reduced by comparison to those level measurements at source. RR786 confirmed previous published studies which showed that at a distance of 250m from composting activity, in most cases, the bioaerosol concentrations will be reduced to background levels. Note that this research was undertaken on aerobic composting sites, which generate higher levels of bioaerosols than anaerobic digestion sites, although the 250m separation distance has been retained.

At present, Thames Water do not have quantitative data for the levels of bioaerosols that might be associated with the potential sources at their sludge treatment centres. As a responsible operator, Thames Water are arranging for bioaerosol monitoring at a number of typical STC's in order to confirm that the understanding of the wider waste water treatment industry, that sewage sludge treatment processes do not give rise to elevated levels of bioaerosols, is correct. The sampling will be in accordance with the requirements of M9 and M17, and consist of a series of agar gel plates being placed downwind and upwind of the cake pad, including sampling points both directly upwind of the downwind sampling point and additional samples in the direction of the nearest sensitive receptors.

## 2.5 Receptors

Environment Agency guidance note M9 recommends a screening distance of 250m from bioaerosol emission sources to static receptor locations. Sensitive receptors are defined as: 'permitted activities where people are

<sup>5</sup> Research Report 786 - Bioaerosol emissions from waste composting and the potential for workers' exposure  
<https://www.hse.gov.uk/research/rrhtm/rr786.htm>

likely to be for prolonged periods'. This term would therefore apply to dwellings (including any associated gardens) and to many types of workplaces. We would not normally regard a place where people are likely to be present for less than 6 hours at one time as being a sensitive receptor. The term does not apply to those controlling the permitted facility, their staff when they are at work or to visitors to the facility, as their health is covered by Health and Safety at Work legislation but would apply to dwellings, commercial or industrial premises nearby where people might be exposed for the requisite period.

There are three sensitive receptors found within 250m of potential bioaerosol emission sources at the site, as shown on the site plan found in Appendix C.

For each of these receptors, the distance and direction from each potential bioaerosol emission source to the closest sensitive receptor has been identified. Where multiple assets exist for the same process, such as cake bays, only the closest location has been presented. The receptor closest to a potential emission source are residential properties at Wood Lane to the East of the STC, approximately 80m South of the Odour Control Unit (A14) (OCU E).

**Table 2: Static Receptors within 250m of Potential Bioaerosol Sources**

Receptor	Description	Source	Distance from closest source (m)	Direction from the Source
R1	Residential Properties: Wood Lane (nearest gardens)	A14 OCU E	80m	South
		A15 OCU F	100m	South East
R2	Residential Properties: Haswell Crescent	A14 OCU E	165m	North East
		A15 OCU F	225m	North East
R3	Cippenham Football Club-recreation ground (southern edge of field)	A14 OCU E	145m	North
		A15 OCU F	185m	North

## 2.6 Risk Assessment

The method used for this bioaerosol risk assessment is adapted from the EA's standard guidance on risk assessments for environmental permitting, which recommends using a Source-Pathway-Receptor model <sup>6</sup>to help determine the magnitude of the risk associated with bioaerosol emissions from a facility.

There are two potential sources of bioaerosols release within 250m of static receptors:

- Odour Control Unit E - Digested Sludge Holding Tank (A14)
- Odour Control Unit F - Picket Fence Thickeners (A15)

The receptors are situated to the North, North East, East, South East and South of the release points and the prevailing wind direction is from the South-west. There is potential for wind-borne transportation of bioaerosols, more so in the direction of Receptors R2 and R3, slightly less so for Receptor R1.

The probability of bioaerosols being emitted from the permitted processes on site is considered to be **low**, and taking into account the location of receptors, their distance from source, and the control measures in place the overall risk is considered to be **low**.

<sup>6</sup> [Risk assessments for your environmental permit - GOV.UK \(www.gov.uk\)](http://www.gov.uk)

Most storage tanks, treatment tanks and associated pipework are enclosed. Where tanks are not gas tight and vent to atmosphere, these are connected to an OCU. There are a number of types of odour control, given the types of OCU, the likelihood of bioaerosol release is anticipated to be minimal.

The maximum daily throughput of sludge is 752m<sup>3</sup>/day.

Overall, the probability of bioaerosols being released from the sludge treatment process and the identified potential sources is considered to be low.

The potential duration of release of bioaerosols varies from infrequent to frequent. The magnitude of release is considered to be low.

There are residential receptors (R1) that are approximately 80m distance south-east and east from identified potential emission sources. Given that the identified potential sources are considered to represent a low risk, and the intervening distance and the screening provided by the vegetation and trees present, it is considered that the probability of exposure to occupants of these properties from bioaerosols emitted from the site is likely to be **low** (if releases occur at all).

Residential receptors (R2) and Chippenham Football Ground (R3) have been identified, >145m north of the identified potential sources. Given that the identified potential sources are considered to represent a low risk and the intervening distance, and the screening provided by the vegetation and trees present, it is considered that the probability of exposure to people at these locations from bioaerosols emitted from the site is also likely to be **low** (if releases occur at all).

Planned monitoring of bioaerosol emissions by Thames Water is expected to validate the assumption that process contributions from sewage sludge treatment works would comply with the 'acceptable level' thresholds.

Table 3 summaries the risk assessment.

**Table 3: Risk Assessment of Potential Bioaerosols Sources**

What has the potential to cause harm? Source	How can the source reach the receptor? Pathway	Who can be affected? Receptors	Assessing the risk Probability of Exposure	Consequence (what is the harm that can be caused)	Managing the risk (Control Measures)	Overall/residual risk
Odour Control Unit E - Digested Sludge Holding Tank (A14)	Inhalation via wind-borne transportation	R1, R2, R3	<p>Receptors downwind are &gt;140m away and also screened by vegetation and trees.</p> <p>The closest receptor is approximately 80m, however this is not in the direction of the prevailing wind and so less likely to be affected. The receptor is also protected to an extent by vegetation and trees.</p> <p>Probability of exposure from A14 is considered to be <b>low</b>.</p>	Impact on human health (considered to be a sensitive receptor).	<p>Most storage tanks, treatment tanks and associated pipework are enclosed. Where tanks are not gas tight and vent to atmosphere, these are connected to an OCU. There are a number of types of odour control, given the types of OCU, the likelihood of bioaerosol release is anticipated to be minimal.</p> <p>These control measures are regularly maintained to sustain their efficacy and reduce the risk of equipment failure.</p>	Low
Odour Control Unit F - Picket Fence Thickeners (A15)	Inhalation via wind-borne transportation	R1, R2, R3	<p>Receptors downwind are &gt;160m away and also screened by vegetation and trees.</p> <p>The closest receptor is approximately 100m, however this is also protected to an extent by vegetation and trees.</p> <p>Probability of exposure from A15 is considered to be <b>low</b>.</p>	Impact on human health (considered to be a sensitive receptor).	<p>Most storage tanks, treatment tanks and associated pipework are enclosed. Where tanks are not gas tight and vent to atmosphere, these are connected to an OCU. There are a number of types of odour control, given the types of OCU, the likelihood of bioaerosol release is anticipated to be minimal.</p> <p>These control measures are regularly maintained to sustain their efficacy and reduce the risk of equipment failure.</p>	Low

## 2.7 Abnormal Situations

In the event of plant failures or abnormal situations, an alarm would be raised on the Site Supervisory Control and Data Acquisition (SCADA) or telemetry systems, which will be reacted to by on-site or regional control room operators and Duty Managers. Depending upon the nature of the fault or emergency, where required, an operator would contact a mechanical or electrical technician, both of whom are on-call 24-hours, to attend site as soon as practicable.

If the on-call technicians are already engaged upon other response work, there is the facility to access staff from other TW geographic divisions, coordinated by the Duty Manager. All faults, breakdowns and emergencies are logged electronically together with records of the action taken and the solutions reached. One such abnormal event would be failure of the flare stack and/or CHP. Such an event would result in releases of biogas from the PRV's located on the roofs of the digesters and in the biogas holder compound, which would release bioaerosols. This occurs to prevent over pressurisation of the digesters and biogas systems. While the problem is rectified, biogas generation is reduced by reducing or inhibiting the digester feed.

### 3. Conclusions

A source-pathway-receptor risk assessment has been undertaken to appraise the potential for risk to human health in dwellings and other nearby buildings from bioaerosols arising from operations at the Slough STC. The risk assessment followed a standardised approach, namely:

- Hazard identification: what sources of bioaerosols are present;
- Exposure assessment: what are the mechanisms or pathways allowing bioaerosols to migrate off site and reach a receptor; and
- Risk evaluation: what is the probability of exposure. This considered control measures in place to reduce the probability or magnitude of release.

A small number of potential sources of bioaerosols within the site processes have been identified, however only two are within 250m of a static receptor. However, given the distance from the emission point and the trees and vegetation which are likely to be protective of the receptor and the control measures in place to contain bioaerosols and prevent their release the overall (residual risk) to receptors is considered to be low.

#### 3.1 Sampling

Thames Water confirms it will use MCERTS accredited providers for the sampling from location A14 – Digested Sludge Holding Tank OCU (NGR: SU 94789 79506) and location A15 - OCU F - Picket Fence Thickeners and SAS Belts OCU (NGR: SU 94691 79481) and will sample OCUs on a bi-annual basis..

In line with M9, ambient sampling will be conducted to identify background emissions. A sampling round, consisting of four individual sampling points, each with its own agar plate will be carried out. One point will be located upwind of the OCU stack to give a background concentration, and three will be located in a fan like arrangement downwind:

Upwind sample location (approx.) which is 50m SW of OCU E: SU 9476 7946  
Downwind sample location which is 50m NNE of OCU E: SU 9481 7954\*  
Downwind sample location 2 which is 50m N of OCU E: SU 9478 7955\*  
Downwind sample location 3 which is 60m NE of OCU E: SU 9484 7953

\* Where 80 m is the distance to the nearest receptor, the M4 motorway is in closer proximity and inline with M9 guidance, sampling should be carried out at a location, which is at a distance as far upwind as is possible between the active operational area and the neighbouring operation, structure or installation

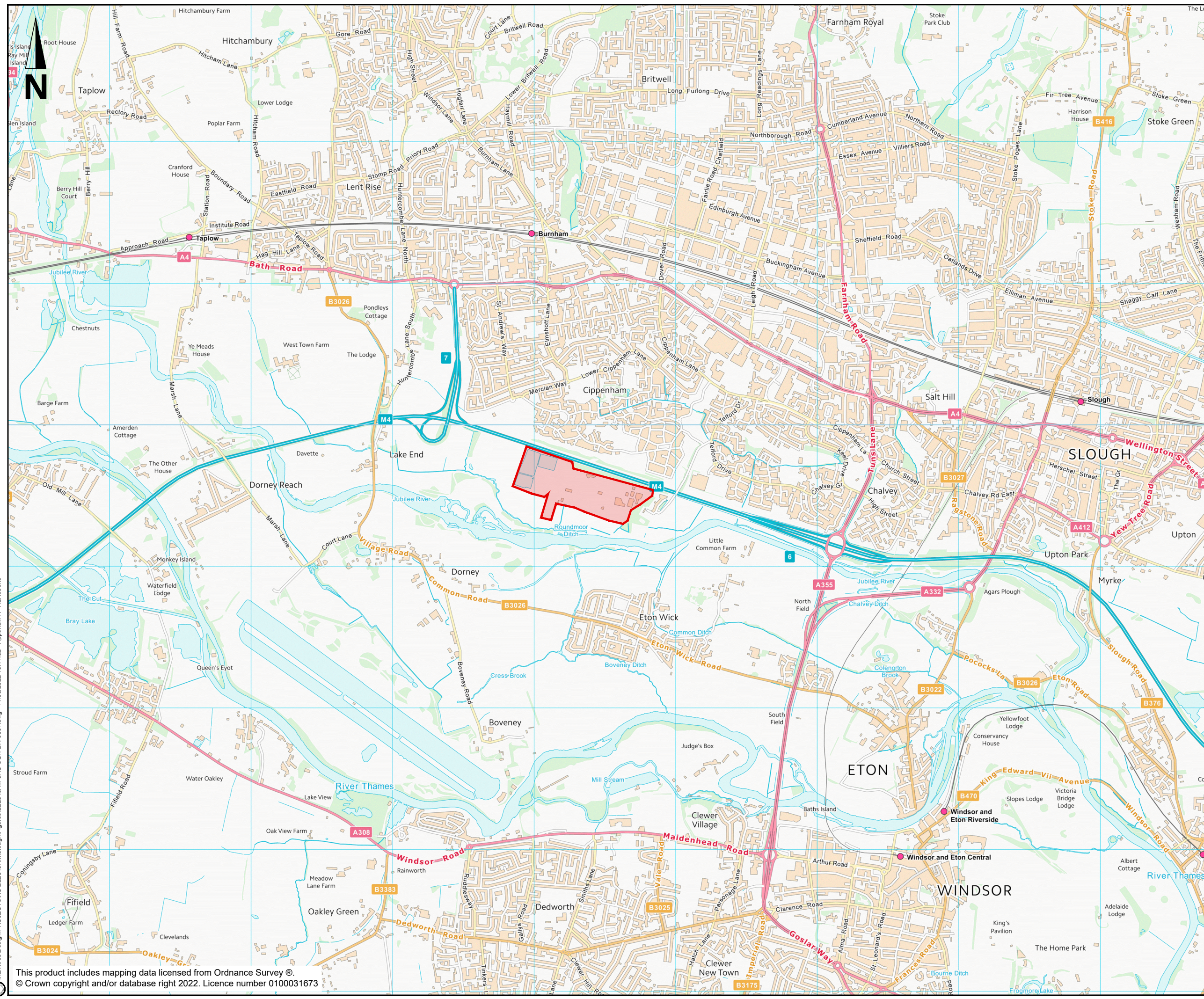
Upwind sample location (approx.) which is 50m SW of OCU F: SU 9466 7943  
Downwind sample location which is 100m NNE of OCU F: SU 9473 7956  
Downwind sample location 2 which is 100m N of OCU F: SU 9469 7958  
Downwind sample location 3 which is 100m NE of OCU F: SU 9477 7953


NGR's for sampling locations are only 8 digits at present, to allow the contractor flexibility as to precise location, taking into account the ability to safely locate and access (and security) of the sampling plates.





## **Appendix A. Site Location Plan**





KEY:  
 Site Location

I:\enviros\Design\PROJECTS\KUIB22849AM\Slough\Figures\B22849AM-JAC-SGH-DR-0001.dwg - 11/05/2022 16:11:32 - Appendix A - ALRoberts

Rev	Rev. Date	FOR INFORMATION	AR	HEK	JK	MM
		Purpose of revision	Drawn	Checked	Rev'd	Approved
 1180 Easdale Road, Wincoburn, Wokingham, RG41 5TU Tel: +44(0)1494 284 7000 www.jacobs.com						
						
<b>Client</b> STC IED PERMIT SLOUGH STW						
<b>Project</b> APPENDIX A SITE LOCATION PLAN						
<b>Drawing title</b> APPENDIX A SITE LOCATION PLAN						
<b>Drawing status</b> PERMITTING						
<b>Scale</b> 1:25,000		<b>DO NOT SCALE</b>				
<b>Jacobs No.</b> B22849AM		<b>Rev</b> P01				
<b>Drawing number</b> B22849AM-JAC-SGH-DR-0001						
<small>           © Copyright 2022 Jacobs U.K. Limited. The concepts and information contained in this document are the property of Jacobs. Use or copying of this document in whole or in part without the written permission of Jacobs constitutes an infringement of copyright. Limitation: This drawing has been prepared on behalf of, and for the exclusive use of, Jacobs' Client, and is subject to, and issued in accordance with, the provisions of the contract between Jacobs and the Client. Jacobs accepts no liability or responsibility whatsoever for or in respect of any use of, or reliance upon, this drawing by any third party.         </small>						

This product includes mapping data licensed from Ordnance Survey ©.  
 © Crown copyright and/or database right 2022. Licence number 0100031673

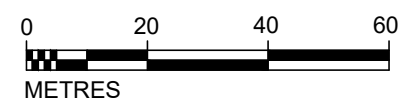
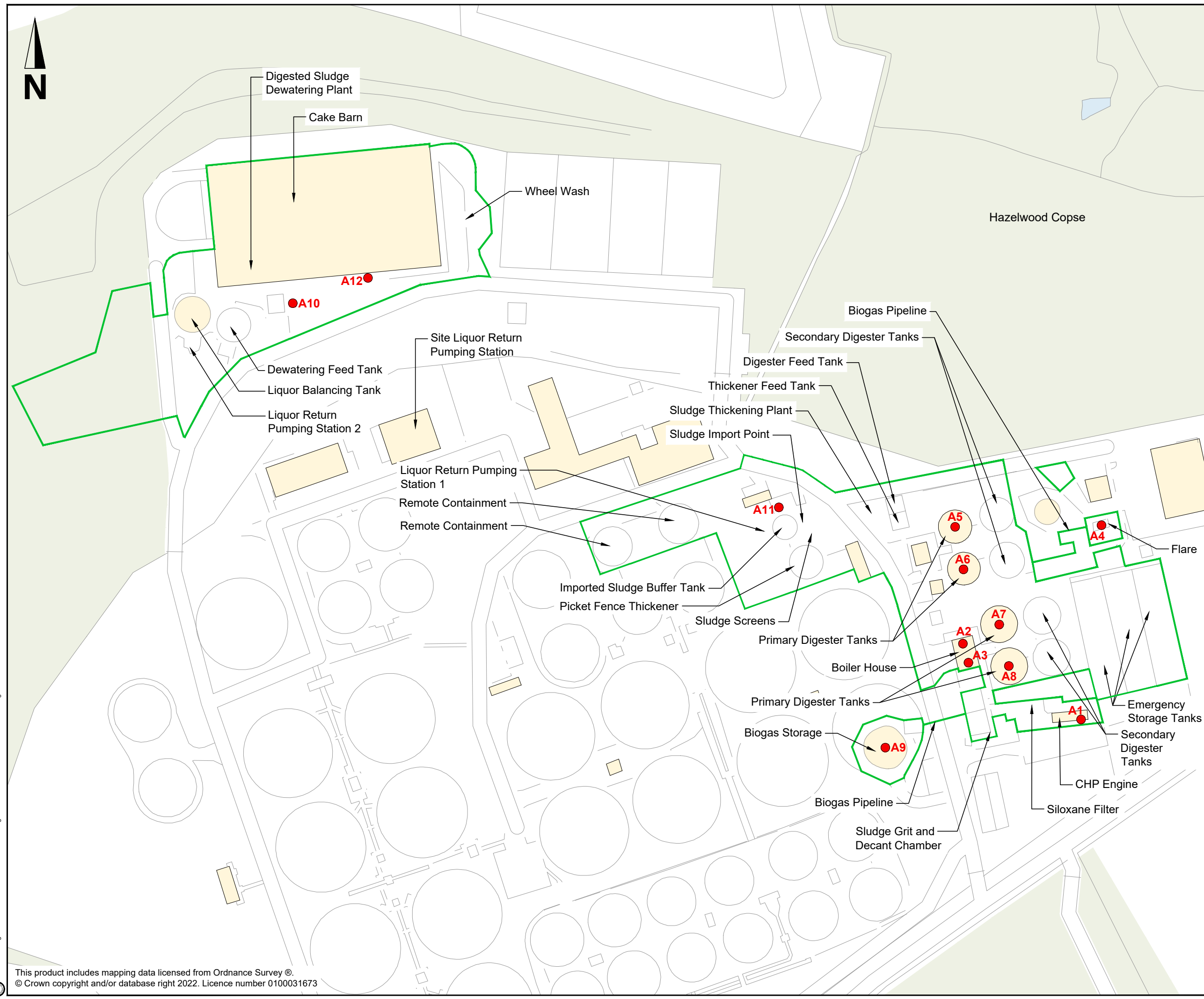


## **Appendix B. Potential Bioaerosol Emission Points**



- KEY:**
- Installation Boundary
  - Air Emission Point

- A1 - CHP Engine 1
- A2 - Auxiliary Boiler 1
- A3 - Auxiliary Boiler 2
- A4 - Emergency Flare
- A5 - Primary Digester PRV
- A6 - Primary Digester PRV
- A7 - Primary Digester PRV
- A8 - Primary Digester PRV
- A9 - Biogas Holder PRV
- A10 - OCU2
- A11 - OCU1
- A12 - Standby Generator 2



P03	NOV 2023	FOR INFORMATION	AR	HEK	JK	MM
P02	AUG 2023	FOR INFORMATION	AR	HEK	JK	MM
P01	JUL 2022	FOR INFORMATION	AR	HEK	JK	MM
Rev	Rev. Date	Purpose of revision	Drawn	Checked	Rev'd	Apprv'd



Client: **STC IED PERMIT BRACKNELL STW**

Drawing title: **APPENDIX B POTENTIAL BIOAEROSOL EMISSION POINTS**

Drawing status: **PERMITTING**

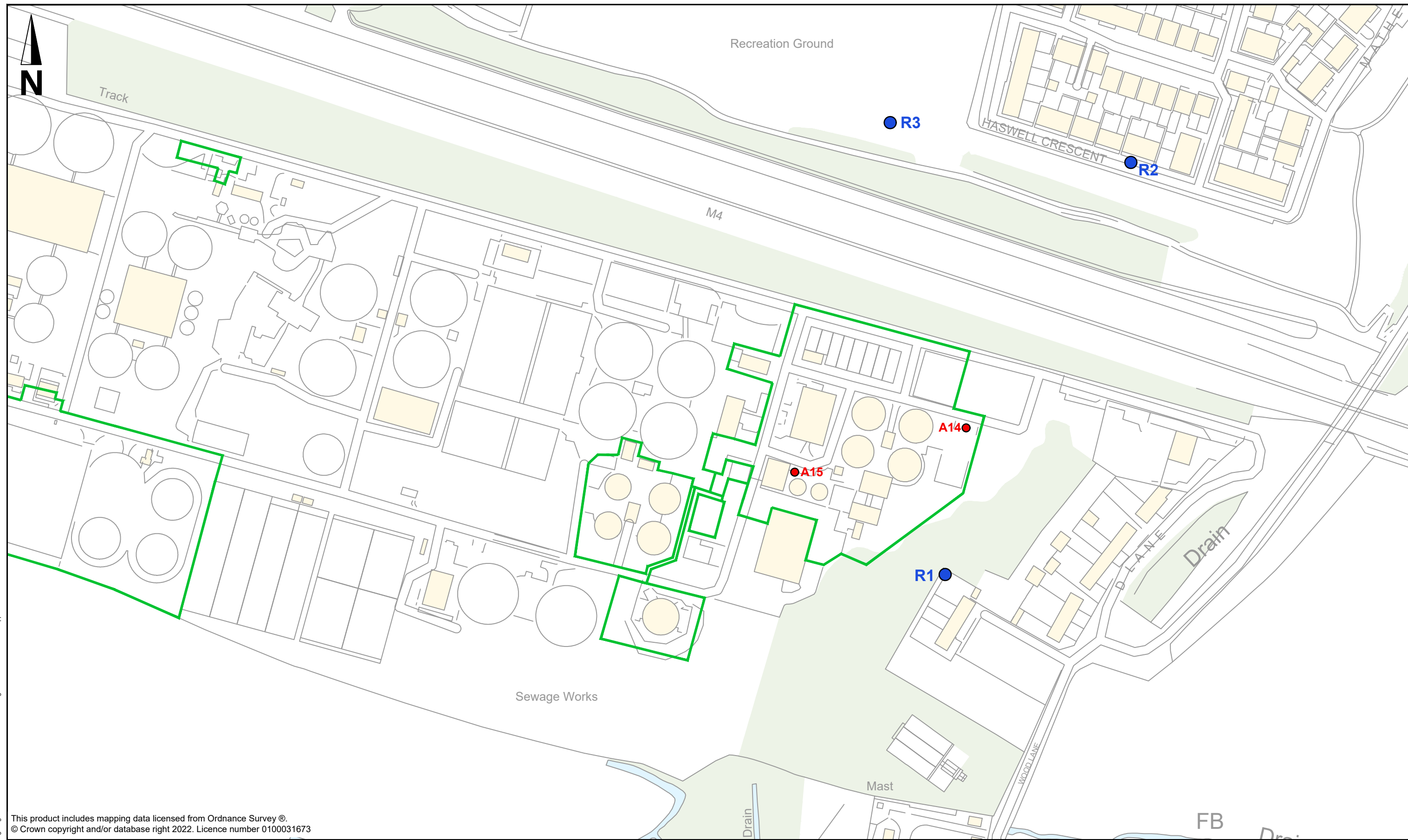
Scale	1:1250	DO NOT SCALE
Jacobs No.	B22849AM	Rev
Client no.		<b>P03</b>

Drawing number: **B22849AM-JAC-BKL-DR-0002**

© Copyright 2023 Jacobs U.K. Limited. The concepts and information contained in this document are the property of Jacobs. Use or copying of this document in whole or in part without the written permission of Jacobs constitutes an infringement of copyright. Limitation: This drawing has been prepared on behalf of, and for the exclusive use of Jacobs' Client, and is subject to, and issued in accordance with, the provisions of the contract between Jacobs and the Client. Jacobs accepts no liability or responsibility whatsoever for or in respect of any use of, or reliance upon, this drawing by any third party.

I:\enviros\Design\PROJECTS\KUIB22849AM\Bracknell\Figures\B22849AM-JAC-BKL-DR-0002-P06.dwg - 15/11/2023 07:45:59 - APPENDIX B - ALRoberts

## **Appendix C. Receptors within 250m of potential emission points**



This product includes mapping data licensed from Ordnance Survey ©.  
 © Crown copyright and/or database right 2022. Licence number 0100031673

Rev	Rev. Date	Purpose of revision	Drawn	Checked	Rev'd	Appr'd
P03	JUN. 2023	FOR PERMITTING	AR	HEK	JK	MM
P02	APR. 2023	FOR PERMITTING	AR	HEK	JK	MM
P01	MAY. 2022	FOR PERMITTING	AR	HEK	JK	MM

- KEY:**
- Installation Boundary
  - Receptors
  - Potential Bioaerosol Emission Points



**Jacobs**  
 1180 Eskdale Road, Wokingham, Wokingham, RG42 5TU  
 Tel: +44(0)118 946 7000  
 www.jacobs.com

Client

Project  
 STC IED PERMIT APPLICATION  
 SLOUGH STW

Drawing title  
**APPENDIX C  
 RECEPTORS WITHIN 250m OF  
 POTENTIAL BIOAEROSOL  
 EMISSION POINTS**

Drawing status  
**PERMITTING**

Scale	1:2,000 @A3	DO NOT SCALE
Jacobs No.	B22849AM	Rev
Client no.		<b>P03</b>

Drawing number  
**B22849AM-JAC-SGH-0004**

I:\enviros\Design\PROJECTS\KUIB22849AM\MSouthern\Figures\B22849AM-JAC-SGH-DR-0004-P03.dwg - 21/06/2023 13:40:36 - Appendix C - ALRoberts

© Copyright 2021 Jacobs U.K. Limited. The concepts and information contained in this document are the property of Jacobs. Use or copying of this document in whole or in part without the written permission of Jacobs constitutes an infringement of copyright. Limitation: This drawing has been prepared on behalf of, and for the exclusive use of Jacobs' Client, and is issued in accordance with the provisions of the contract between Jacobs and the Client. Jacobs accepts no liability or responsibility whatsoever for, or in respect of, any use of, or reliance upon, this drawing by any third party.