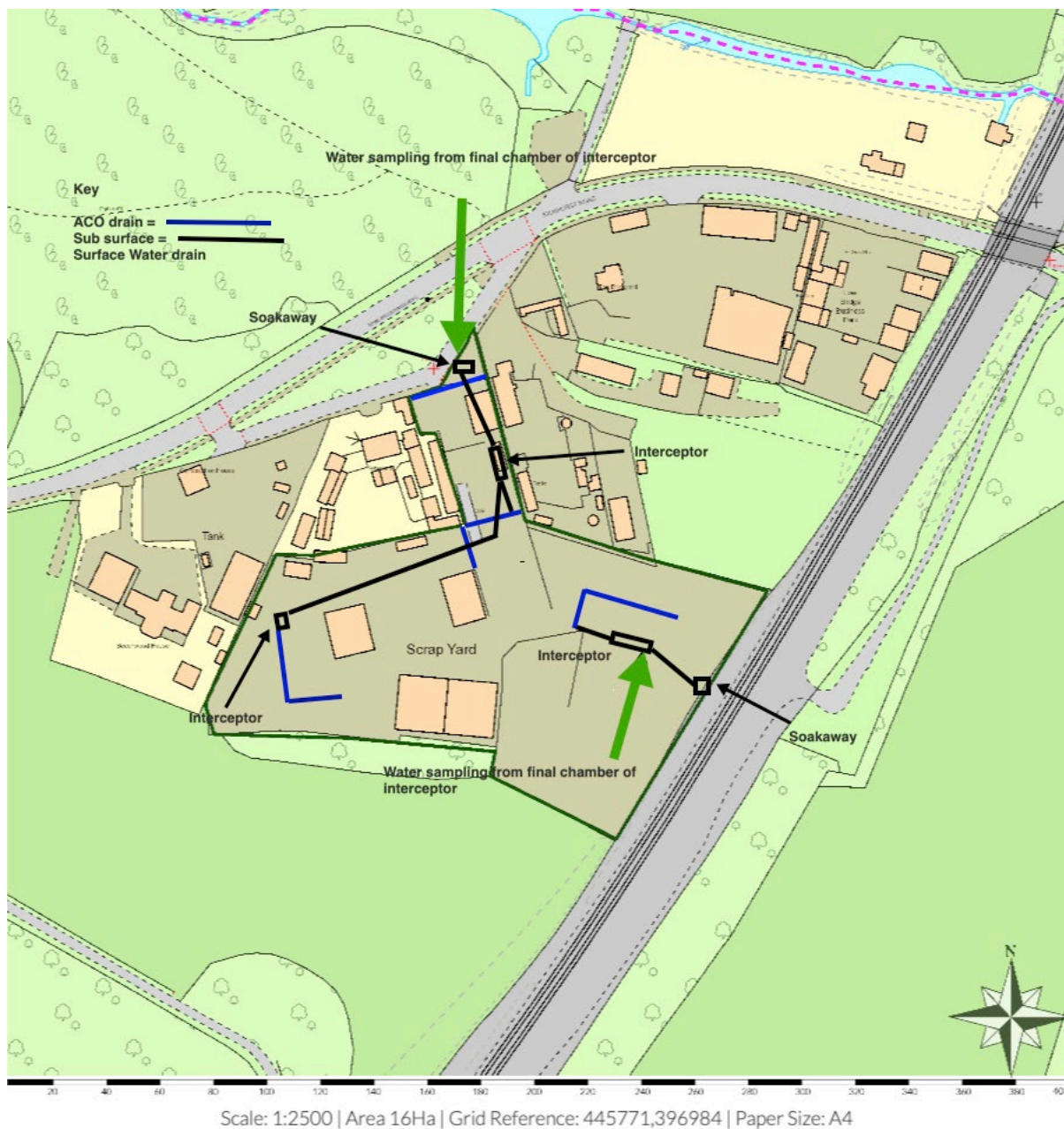


Water Monitoring & Interceptors

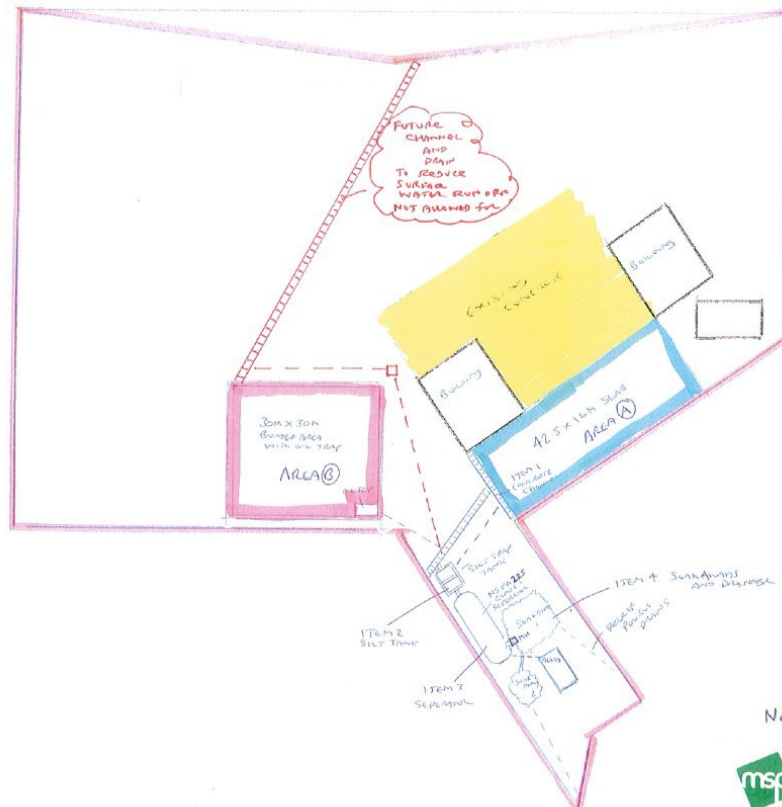
Regular monitoring of water from the final chamber of the interceptors is taken prior to discharge to the soakaways shown in map below. Testing is for a TPH screen including BENZENE as a minimum, preferably PAHs, Metals and TPHs.

Analysis is undertaken by a UKAS laboratory.

The interceptors are regularly gulped out and maintained to ensure that the sealed drainage system is operating effectively. Testing is completed at 6 monthly intervals or more frequently if there is heavier than usual rainfall. Discharge volume is entirely rainfall dependant.



OPTION 1



NOT TO SCALE



MSP 01



Full Retention Separators

Full retention separators treat the full flow that can be delivered by the drainage system, which is normally equivalent to the flow generated by a rainfall intensity of 65mm/hr. On large sites, some short term flooding may be an acceptable means of limiting the flow rate and hence the size of full retention systems.

Product Code	Flow (l/s)	Drainage Area (m ²)	Silt Capacity (litrs)	Oil Capacity (litrs)	Length (mm)	Diameter (mm)	Manhole Cover Dimensions (mm)	Base to Inlet Invert (mm)	Base to Outlet Invert (mm)	Min. Inlet Invert (mm)	Std Pipework Diameter (mm)
NSFP003	3	170	300	30	1700	1350	600	1410	1335	550	160
NSFP006	6	335	600	60	1700	1350	600	1410	1335	550	160
NSFA010	10	555	1000	100	2610	1225	600	1050	1000	500	200
NSFA015	15	835	1500	150	3910	1225	600	1050	1000	1000	200
NSFA020	20	1115	2000	200	3200	2010	600	1810	1760	1000	315
NSFA030	30	1670	3000	300	3915	2010	600	1810	1760	1000	315
NSFA040	40	2225	4000	400	4640	2010	600	1810	1760	1000	315
NSFA050	50	2780	5000	500	5425	2010	600	1810	1760	1000	315
NSFA065	65	3160	6500	650	6850	2010	600	1810	1760	1000	315
NSFA080	80	4445	8000	800	5744	2820	600	2500	2450	1000	315
NSFA100	100	5560	10000	1000	6200	2820	600	2500	2450	1000	400
NSFA125	125	6945	12500	1250	7365	2820	600	2500	2450	1000	450
NSFA150	150	8335	15000	1500	8675	2820	600	2550	2450	1000	525
NSFA175	175	9725	17500	1750	9975	2820	600	2550	2450	1000	525
NSFA200	200	11110	20000	2000	11280	2820	600	2550	2450	1000	600

NSFA 225 12500m² 12M 2820 Allowance 600

↑
OPTION 1