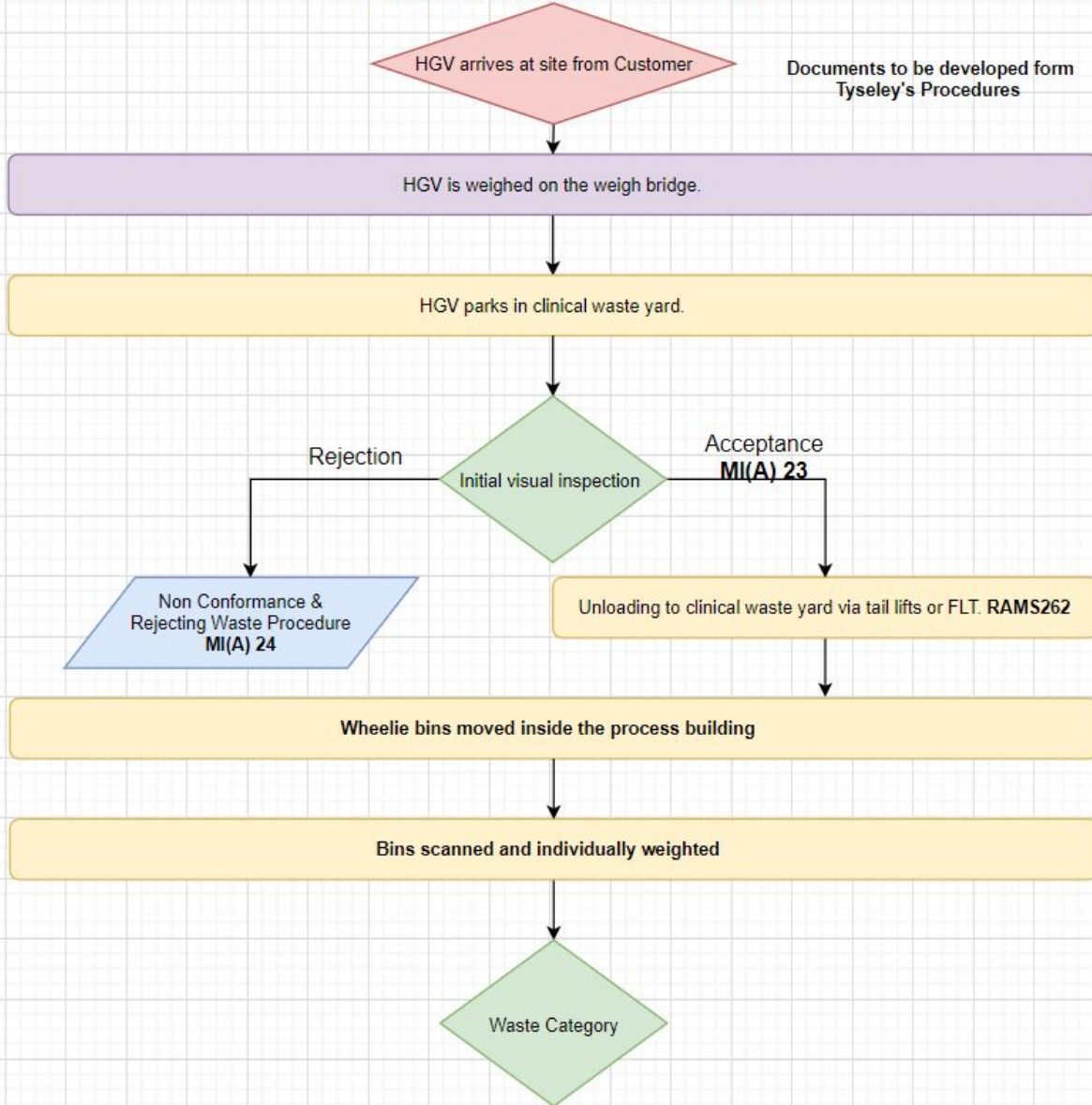
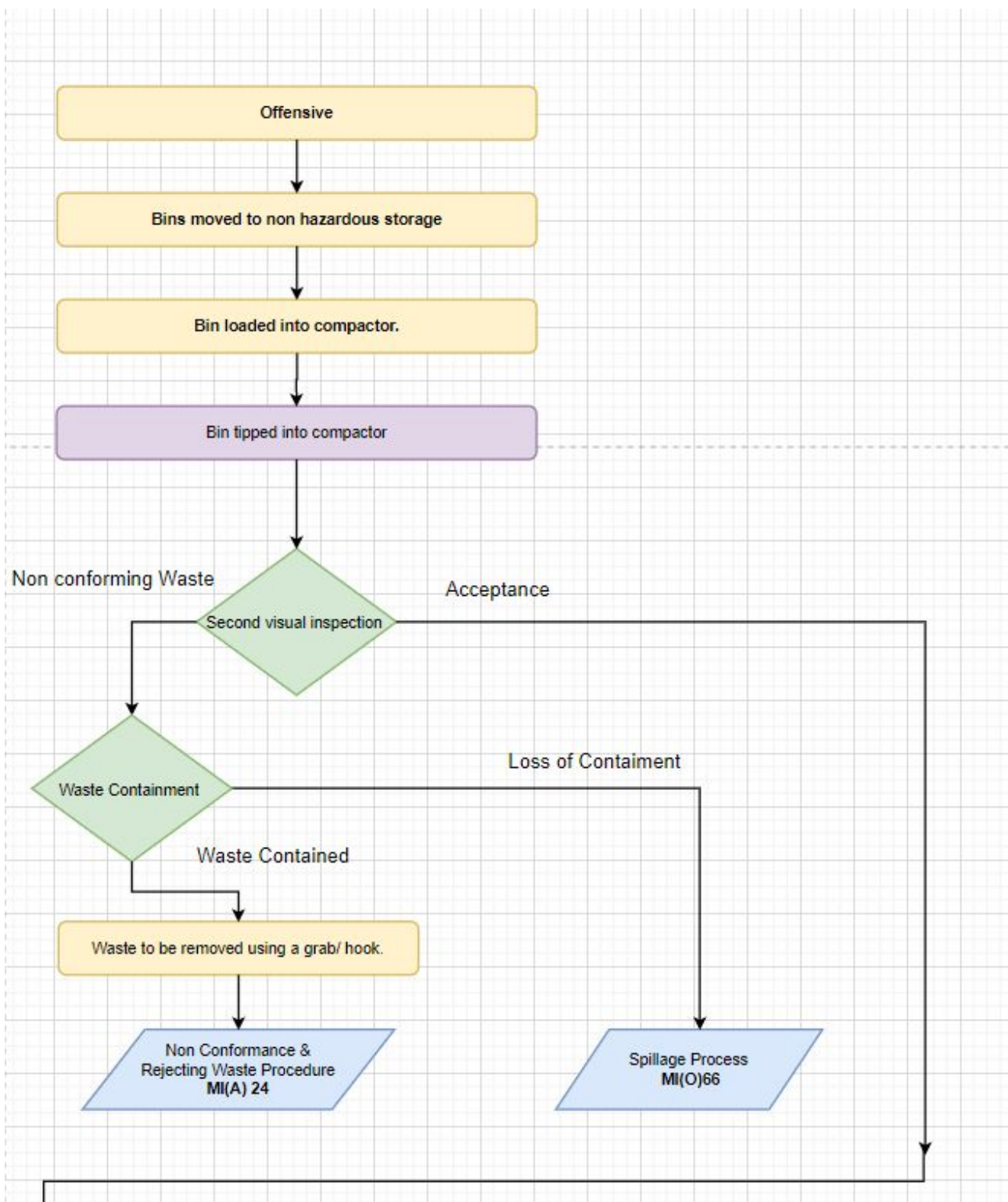


### HAZ0011: Clinical Waste Process Flow





Bin unloaded from tipping machine.

Bin loaded into bin wash and cleaned.

Bin moved to the "Clean Bins Area"

Empty bins loaded onto HGV via tail lift or FLT.

HGV leaves site.

Compactor, once full loaded onto vehicle and emptied into the bunker

Compactor returned empty to clinical building

