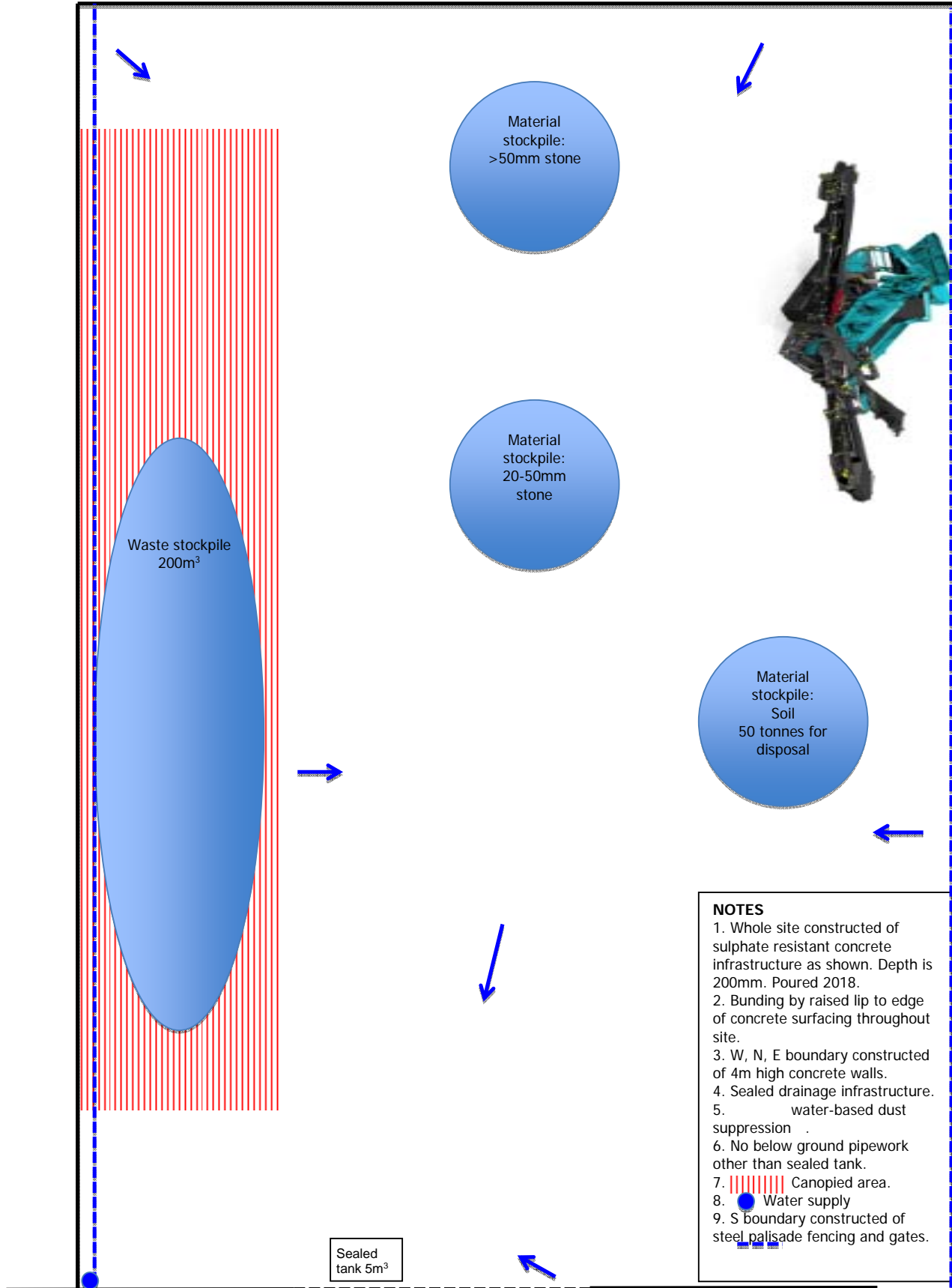


NOTES

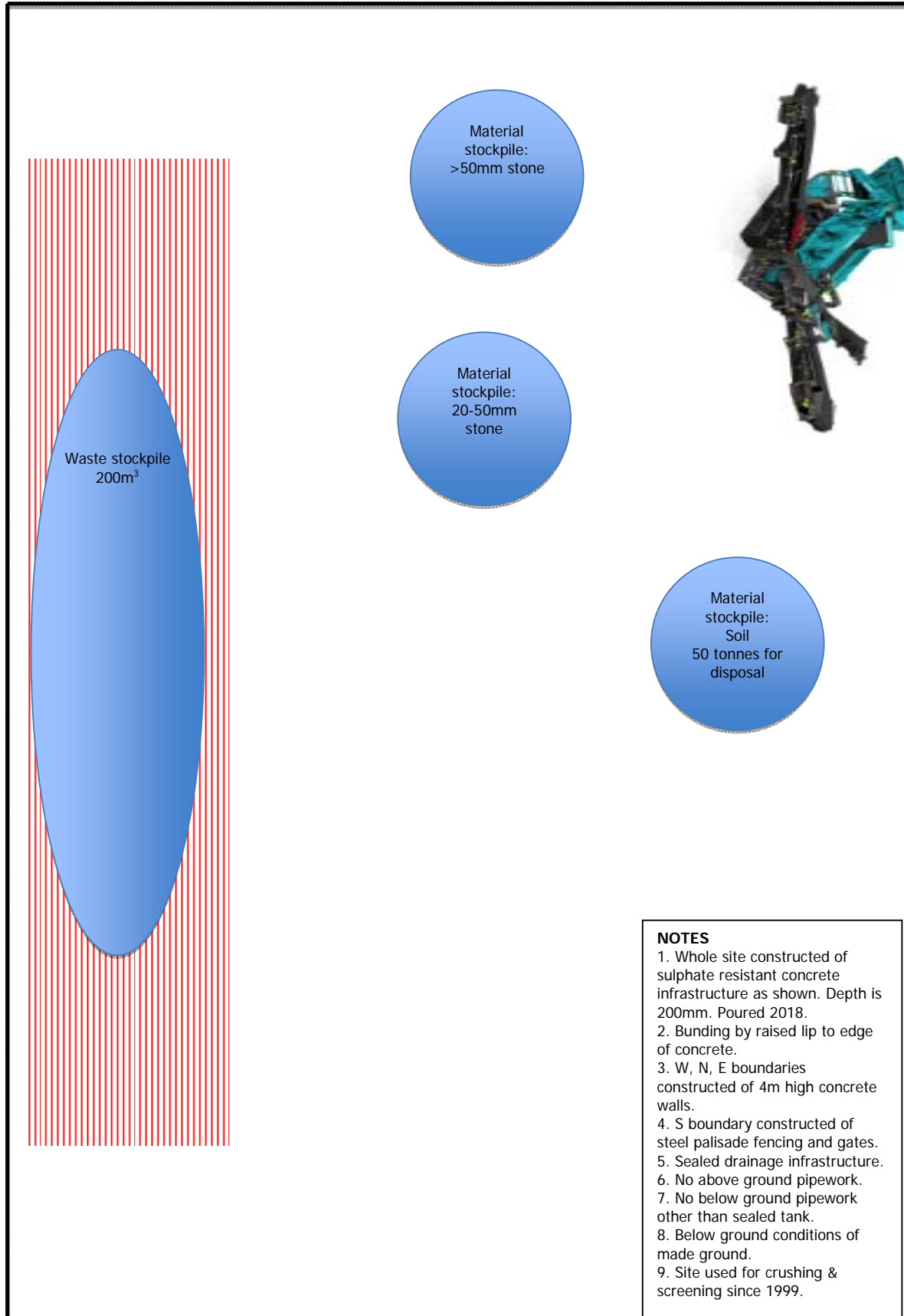
1. Whole site constructed of sulphate resistant concrete infrastructure as shown. Depth is 200mm. Poured 2018.
2. Bunding by raised lip to edge of concrete surfacing throughout site.
3. W, N, E boundary constructed of 4m high concrete walls.
4. Sealed drainage infrastructure.
5. water-based dust suppression
6. No below ground pipework other than sealed tank.
7. ||||| Canopied area.
8. ● Water supply
9. S boundary constructed of steel palisade fencing and gates.



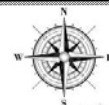


Site access gates

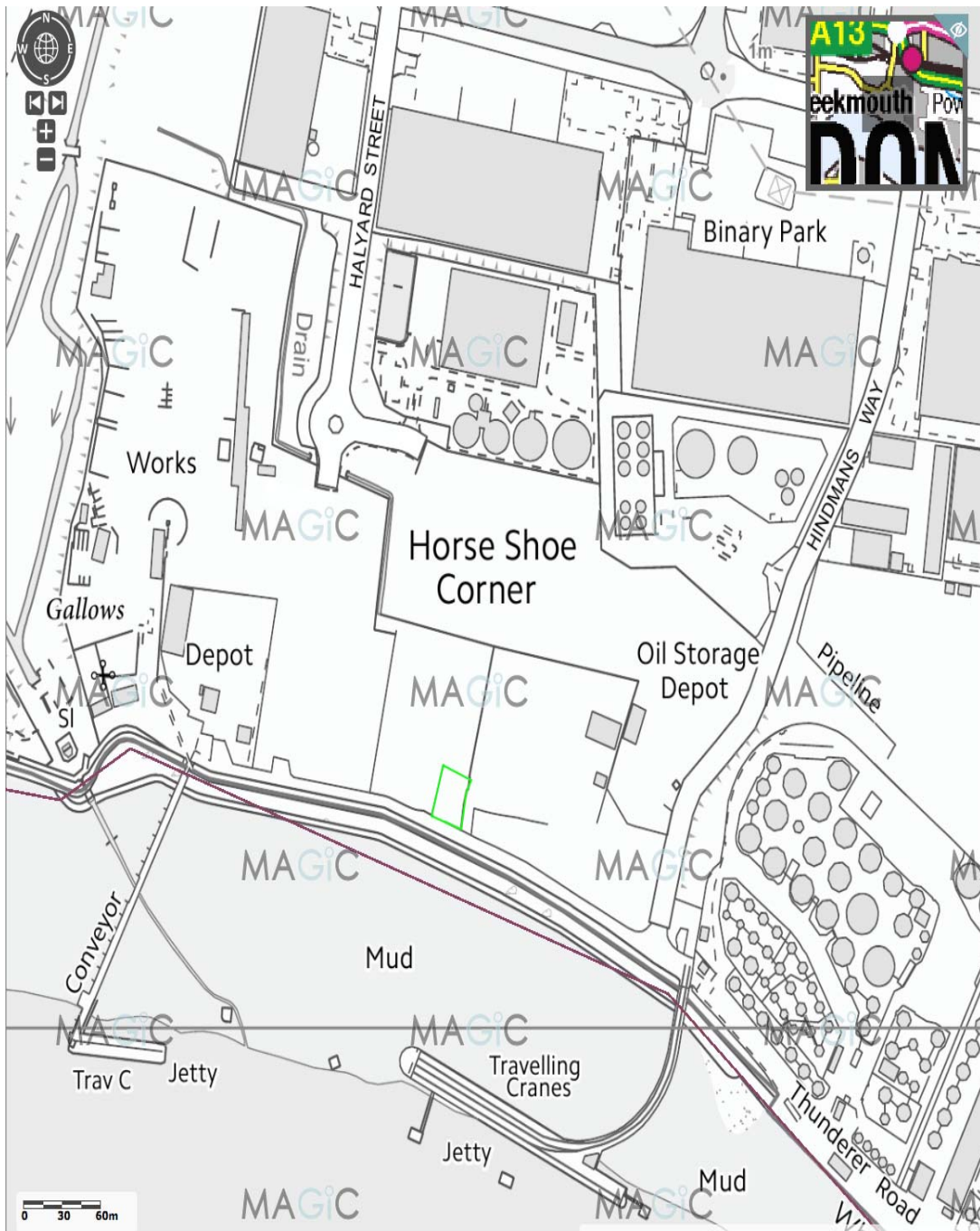


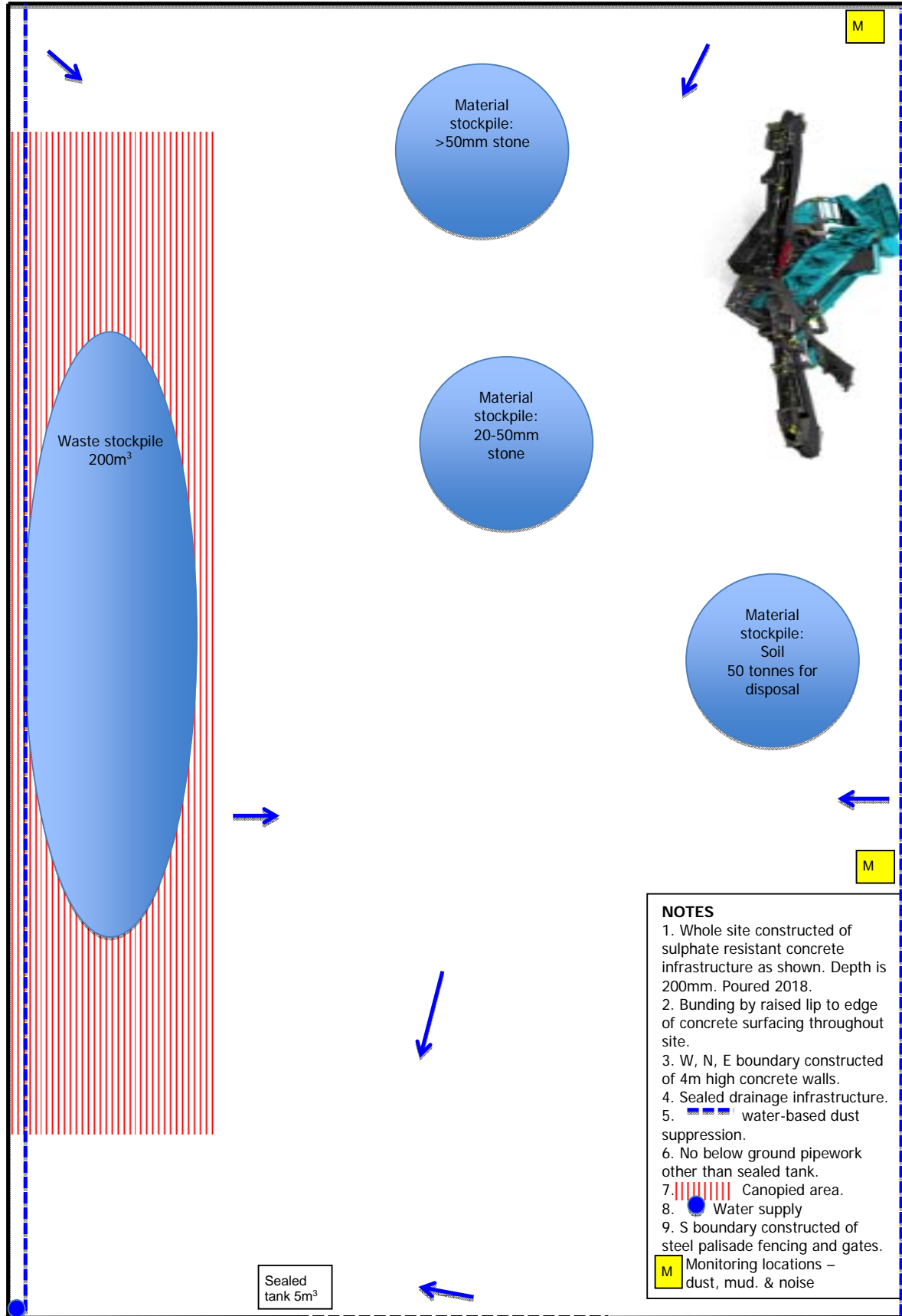


Site access gates






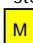
NEPTUNE CONTRACT SERVICES LTD.
THUNDER ROAD, CHEQUERS LANE, DAGENHAM RM9 6PU





NOTES

1. Whole site constructed of sulphate resistant concrete infrastructure as shown. Depth is 200mm. Poured 2018.
2. Bunding by raised lip to edge of concrete surfacing throughout site.
3. W, N, E boundary constructed of 4m high concrete walls.
4. Sealed drainage infrastructure.
5.  water-based dust suppression.
6. No below ground pipework other than sealed tank.
7.  Canopied area.
8.  Water supply
9. S boundary constructed of steel palisade fencing and gates.

 Monitoring locations – dust, mud. & noise

Site access gates



 M