

Application for an Environmental Permit - Thurrock 2 Flexible Generating Facility

Supporting Information

794-ENV-EPC-20502
Supporting Information
V1 R2
26 February 2026

REPORT

Document status

Version	Authored by	Reviewed by	Approved by	Review date
V1 R0	Tom Hatch			
V1 R1	Alex Kingston	William Summerlin		16/02/2026
V1 R2	Alex Kingston	Jennifer Stringer	Jennifer Stringer	26/02/2026

Approval for issue

Jennifer Stringer		26/02/2026
-------------------	---	------------

© Copyright R P S Group Limited. All rights reserved.

The report has been prepared for the exclusive use and benefit of our client, and for the sole and specific purpose for which it is provided. R P S Group Limited, any of its subsidiaries, or a related entity (collectively 'Tetra Tech RPS') does not accept any liability if this report is used for an alternative purpose from which it is intended. The report does not account for any changes relating the subject matter of the report, or any legislative or regulatory changes that have occurred since the report was produced and that may affect the report.

Tetra Tech RPS does not accept any responsibility for any documents or information supplied to Tetra Tech RPS by others. It is expressly stated that no independent verification of any documents or information supplied by others has been made.

Unless otherwise agreed in writing by Tetra Tech RPS no other party may use, make use of, or rely on the contents of this report. Tetra Tech RPS does not accept any responsibility or liability for loss whatsoever to any third party caused by, related to, or arising out of any use or reliance on the report.

Prepared by:

Tetra Tech RPS

Alex Kingston

Environmental Consultant

20 Farringdon Street,
London, EC4A 4AB

T +44 (0)20 3691 0500

E alex.kingston@tetrattech.com

Prepared for:

Statera Energy-Limited

Clara Richardson-Perez

Senior Asset Manager

5th Floor 80 Victoria Street London SW1E
5JL

T 07594355342

E crichardsonperez@stateraenergy.co.uk

Non-Technical Summary

Introduction

This document supports the application by Thurrock Power 2 Limited for an Environmental Permit to operate the Thurrock 2 Flexible Generation Facility (T2FGF) under the Environmental Permitting Regulations 2016 (as amended). The T2FGF operation will have a total thermal input of up to 232.76 MW under normal operation (22 engines @ 10.58 MW_{th} input, LHV), ultimately providing up to 104.8 MW (net) of electricity for export to the grid during periods of peak demand or other periods of system tightness. The engines can operate for short periods in high power mode where the thermal input to the engines is 11.17 MW_{th} and the output is 5 MWe. Therefore, the maximum combined thermal input of the engines in high power mode is approximately 245.74 MW_{th} (22 engines @ 11.17 MW, LHV). Operation will be limited to 1,500 hours per engine per annum.

Site Location

The proposed site, which covers approximately 0.5 hectares, is located on open fields, approximately 1 km east of the edge of Tilbury, Essex. The nearest existing post code is RM18 8QR and the site is centred at National Grid Reference TQ 66156 76668. The site comprises open fields crossed by pylons and above ground electricity cables. The surrounding area is mainly agricultural, however, the existing National Grid Tilbury Substation and the site of the decommissioned Tilbury Power Station both lie to the south, beyond which lies the River Thames, approximately 1.25 km south of the proposed site. Other minor water bodies lie on and adjacent to the proposed site. The recently developed battery storage facility and Thurrock Flexible Generation Facility (TFGF) border the site to the south and east, and a railway line passes to the northwest. The T2FGF will require a separate permit to the TFGF.

Regulated Facility

The scale of the T2FGF will trigger a bespoke Part A(1) installation permit for a combustion activity. Whilst triggering an installation permit the size of the proposed engines will not require compliance with Large Combustion Plant requirements as set out in the Industrial Emissions Directive¹, instead the facility will fall under the requirements of the Medium Combustion Plant Directive (MCPD)².

The T2FGF is immediately adjacent to the permitted TFGF but has been designed as a separate project which will operate independently from the TFGF. The two facilities are also Operated by separate legal entities. Whilst it is proposed that the two facilities are separately permitted they are considered to form a multi-operator installation.

Process Description

Operations

The proposed facility will consist of up to 22 x 4.763 MW_e spark ignition reciprocating gas engines and will operate as a peaking plant to provide additional energy security during periods of during periods of peak electricity consumption or other periods of system tightness within the UK. The selected engines will be designed to meet the requirements of the Medium Combustion Plant Directive (MCPD)³.

¹ Directive 2010/75/EU of the European Parliament and of the Council, of 24 November 2010 on industrial emissions (integrated pollution prevention and control) (Recast)

² [Directive - 2015/2193 - EN - EUR-Lex](#)

³ [Directive - 2015/2193 - EN - EUR-Lex](#)

The engines will have a high-power mode which may operate for short periods only to boost the output from 104.8 to 110 MW_e, as required. High power mode will be used for up to 15 hours per year.

Natural gas will be delivered to the T2FGF via a new pipeline connection from the Pressure Reducing Station (PRS) associated with the adjacent Thurrock Flexible Generation Facility (TFGF). An onsite distribution system will connect each of the 22 engines to the gas supply. The gas will be combusted within the gas engines which will be housed within concrete containers. The 22 engine rooms will be housed within the engine block. The electrical output from the plant will be exported to the Transmission Network via step-up transformers.

Cooling for the gas engines will be provided by fin-fan coolers which will operate in a closed-circuit cooling water system.

Management of Activities

An in-house Environmental Management System (EMS) will be in place which will meet the requirements of environmental permitting and broadly follow the EMS standard ISO 14001. The EMS will be underpinned by an environmental policy. All staff and external contractors will be made aware of the environmental policy as part of the induction training and a copy will be made available on site. Thurrock Power Ltd will also implement a record keeping system on site as part of its management system.

The plant will be managed and operated by a technically competent and trained workforce. Specific training will be provided to staff responsible for controlling the new gas engines. Clear lines of responsibility will be established, and these will be defined within the management system.

Energy Efficiency

The gas engines selected to provide peaking power are high efficiency gas engines achieving an LHV gross electrical efficiency of approximately 45%. This level of efficiency compares favourably with the efficiency levels for new gas engines as stated in the large combustion plan (LCP) reference document on best available techniques⁴, although these engines are Medium Combustion Plant due to the aggregation rules for LCP.

Raw Materials, Water and Waste

The main materials used within the plant will include natural gas for fuel, lubrication oil and ethylene glycol in the cooling system. Insulating oil will be present within the transformer. Water usage is limited to small volumes of water required for topping-up the closed-circuit cooling water system. Waste generation from the plant is anticipated to be low and will comprise primarily waste oil and waste from maintenance activities.

Emissions to Air

Emissions to air will result from the combustion of natural gas within the gas engines, which will be released into the atmosphere via 22 dedicated exhaust stacks, each housing two flues. A stack height assessment has been carried out to determine the optimum height for the stacks, which has been determined to be 20 m. The effects on air quality from the peaking plant have been assessed on this basis. The resulting air quality effect of the proposed new and existing engines in operation is considered to be 'not significant' overall. Detailed dispersion modelling has been carried out for

⁴ Note the proposed new engines do not fall under large combustion plant requirements however the comparison has been made in the absence of energy efficiency performance benchmarks for medium combustion plant.

operation of 22 engines over the maximum 1,500 hours over a year at full load and with emissions at MCPD limits. The predicted emissions at sensitive receptors surrounding the plant are below the required air quality standards. The assessment of air quality effects at nearby ecological sites concluded maximum process contributions at nearby Local Wildlife Sites and Sites of Nature Conservation Interest would be well below the critical level. As a result, impacts at these designated conservation sites have been determined to be insignificant.

Emissions to Surface Water, Sewer, Effluent Treatment Plants or Other Transfers off Site

There will be no process water discharges to sewer or surface water. Discharges to water will be restricted to surface water run-off from the roofs, concreted and paved areas etc. and water will flow through the surface water drainage system and swale before, if necessary, release into the local surface water drainage which ultimately discharges into the Thames. There will be no point source emissions to land or groundwater.

Emissions to Land

There will be no emissions to land.

Fugitive Emissions

The primary potential for fugitive releases is associated with the delivery system for natural gas. The delivery system for handling natural gas will be designed to prevent the escape of gas. The only process waters associated with operation of the new plant are within the closed-circuit cooling water (CCCW) system which contains only a small volume of water. The area containing the fin fan coolers and CCCW circulating pumps will be bunded so the risk of accidental discharge of process waters to controlled waters is minimised. Storage areas for the lubrication and waste oil will be bunded to ensure that, should an accidental spillage occur, the oil remains isolated from drainage systems prior to clean up.

Odour

There will be no significant sources of odour resulting from the operation of the plant as un-odourised natural gas is used at the site.

Noise and Vibration

The gas engines and other ancillary plant on site are sources of noise. However, noise levels from the peaking plant will be mitigated to ensure that the impact to health, the environment and general amenity are minimised. Mitigation measures will include concrete containers to house the engines and stack exhaust silencers. The supporting noise impact assessment indicates that “significant adverse impacts would not occur” on nearby receptors. Noise impacts will be managed in accordance with a noise management plan which is included within this application (see Appendix F). The noise management plan will form part of the operational management system and will be reviewed and maintained throughout the operational life of the facility.

Best Available Techniques

The application sets out the proposed operating techniques and considers these against BAT and alternative techniques. The proposed techniques are considered to meet BAT, and the operation of the proposed facility is not expected to give rise to significant effects to the environment or human health.

Contents

Non-Technical Summary	i
Introduction.....	i
Site Location.....	i
Process Description.....	i
Operations.....	i
Management of Activities.....	ii
Energy Efficiency.....	ii
Raw Materials, Water and Waste.....	ii
Emissions to Air.....	ii
1 INTRODUCTION	1
1.2 Site Location.....	1
1.3 The Applicant.....	2
1.4 Regulatory Context.....	2
1.5 Structure of the Permit Application.....	3
2 MANAGEMENT OF ACTIVITIES	5
2.1 General.....	5
2.2 Operations and Maintenance.....	5
2.3 Competence and Training.....	5
2.4 Organisation.....	6
2.5 Accident Management.....	6
2.6 Site Security.....	6
2.7 Energy Efficiency.....	7
Basic Energy Requirements.....	7
Operations and Maintenance.....	7
Energy management Policy.....	7
CHP Ready Assessment.....	8
Building Services.....	8
2.8 Efficient Use of Raw Materials.....	8
Water Use.....	12
2.9 Avoidance, Recovery and Disposal of Wastes.....	12
3 OPERATIONS	13
3.1 Overview of T2FGF proposal.....	13
3.2 Fuel and Raw Material Supply, Storage and Handling.....	13
3.3 Combustion of Fuel and Power Generation from T2FGF.....	13
3.4 Transformer.....	14
3.5 Cooling System.....	14
3.6 Start up and Shut down Procedures.....	14
3.7 Commissioning.....	14
4 EMISSIONS AND MONITORING	16
4.1 Emissions to Air.....	16
4.2 Emissions to Land.....	16
4.3 Emissions to Surface Waters and Sewer.....	16
4.4 Emissions to Groundwater.....	16
4.5 Fugitive Emissions to Air.....	16
4.6 Fugitive Emissions to Surface Water or Sewer.....	17
4.7 Noise and Vibration.....	17
4.8 Monitoring and Reporting of Emissions.....	17
Emissions to Air.....	17
Emissions to water and land.....	18

	Process Monitoring.....	18
5	IMPACTS	19
5.2	Emissions to Air.....	19
	Stack Height Determination	20
	Dispersion Modelling Assessment Results	20
5.3	Assessment of Impacts at Ecological Receptors.....	20
5.4	Emissions to Water and Sewer.....	21
5.5	Noise	21
6	BAT ASSESSMENT.....	23
6.2	Selection of Combustion Technique and Operating Hours.....	23
6.3	Control of Emissions to Air.....	24
	Emissions to Nitrogen Oxides.....	24
	Emissions of Carbon Monoxide	25
	Other Emissions to Air	25
	Dispersion of Emissions	25
	Emission Monitoring	25
6.4	Noise Emissions	26
6.5	Energy and Resource Efficiency.....	26
6.6	Meeting Future Energy Demands.....	26
6.7	Selection of Cooling System.....	27

Tables

Table 1-1: Protected Habitats within Relevant Screening Distances of the Thurrock T2FGF Site.....	1
Table 2-1: Energy Requirement Breakdown	7
Table 2-2: Typical natural gas composition.....	8
Table 2-3: Raw Materials Usage.....	10
Table 4-1: Summary of Monitoring of Emissions to Air.....	18
Table 6-1: NO _x Control Options	25
Table 6-2: Comparison of cooling systems	27

Appendices

- Appendix A** Application Forms
- Appendix B** Plans
- Appendix C** Environmental Risk Assessment
- Appendix D** SCR and Baseline
- Appendix E** Air Quality Impact Assessment
- Appendix F** Noise Impact Assessment
- Appendix G** Site Organogram
- Appendix H** Pre-Application Discussions

1 INTRODUCTION

- 1.1.1 This document, and associated appendices, forms the application for an Environmental Permit to operate a gas fired generating facility (T2FGF) under the Environmental Permitting Regulations 2016 (as amended). The T2FGF operation will ultimately provide up to 110 MW of electricity for export to the grid with all engines operating in high-power mode.
- 1.1.2 The T2FGF will consist of 22 x 4.763 MW_e spark ignition reciprocating gas engines. For short periods of time up to 15 hours per year, the engines may operate in high-power mode, delivering 5 MW_e (at LHV), to achieve a short-term electrical output of approximately 110 MW_e. The facility will operate to provide additional energy security during periods of peak electricity consumption within the UK. The combined net thermal input of the T2FGF under normal operation is approximately 232.67 MW_{th}, and under high power mode approximately 245.74 MW_{th}, at LHV. Operation would not be continuous but would run as a flexible back up supply for up to 1,500 hours per engine per annum. The selected engines will be designed to meet the requirements of the Medium Combustion Plant Directive (MCPD)⁵.

1.2 Site Location

- 1.2.1 The proposed site is located on open fields southwest of Station Road, approximately 1 km east of the edge of Tilbury, Essex. The nearest post code is RM18 8QR and the site is centred at National Grid Reference TQ 66156 76668.
- 1.2.2 The site covers approximately 0.5 hectares of open fields and is part of a larger development covering approximately 20 hectares, including a battery storage facility.
- 1.2.3 The area of the site for the T2FGF is bordered by open fields on all sides. To the south of the proposed site lies the existing National Grid Tilbury Substation and the site of the decommissioned Tilbury Power Station, beyond which lies the river Thames, approximately 1.25 km south of the proposed site. A railway line passes approximately 175 m to the north of the site boundary at its closest point.
- 1.2.4 The closest residential properties to the site are located at Bryon Gardens approximately 780 m west in Tilbury. The built-up residential area of Tilbury is approximately 1 km west of the site.
- 1.2.5 The sensitive receptors listed within Table 1-1 below are identified in the Environment Agency Nature and Heritage Conservation screening report, included in Appendix H to this report, and the Air Quality Impact Assessment, included as Appendix E to this report, which replicated the receptors considered in the evidence to support the application for planning consent.

Table 1-1: Protected Habitats within Relevant Screening Distances of the Thurrock T2FGF Site

Designation	Site
SPA, Ramsar, SSSI	Thames Estuary and Marshes
SPA, Ramsar	Medway Estuary and Marshes
SAC	Peter’s Pit
SAC	North Downs Woodland

⁵ [Directive - 2015/2193 - EN - EUR-Lex](#)

Designation	Site
Local Wildlife Site	Tilbury Power Station
Local Wildlife Site	West Tilbury Hall
Local Wildlife Site	West Tilbury Church
Local Wildlife Site	Low Street Pit
Local Wildlife Site	Tilbury Centre
Local Wildlife Site	Tilbury Marshes
Local Wildlife Site	Broom Hill
Local Wildlife Site	Hob Hill & Sandy Lane Pit, Chadwell St. Mary
Local Wildlife site	Lytag Brownfield
Local Wildlife Site	Goshems Farm

1.2.6 The closest sensitive ecological receptor to the site is West Tilbury Marshes, over part of which the installation will be built, and East Tilbury Marshes. An assessment of ecological impacts resulting from operation of the T2FGF has been made for the designated sites.

1.3 The Applicant

1.3.1 The applicant and operator of the T2FGF is Thurrock Power 2 Limited and is listed on Companies House with registered number 1491278.

1.3.2 The Directors, and their dates of birth, as listed on Companies House are provided in Appendix A.

1.4 Regulatory Context

1.4.1 Schedule 1 of the Environmental Permitting Regulations sets out those activities that require a permit. The combined thermal input of the facility at 232.76 MW (245.74 MW_{th} in high power mode) falls under Schedule 1, Section 1.1 Part A(1) (a) the burning any fuel in an appliance with a rated thermal input of 50 megawatts or more and consequently therefore a bespoke installation permit is triggered.

1.4.2 Article 29 of the Industrial Emissions Directive⁶ sets out the aggregation rules for combustion plant qualifying as a Large Combustion Plant (LCP). In particular Article 29 (3) identifies that for the purpose of aggregation to determine whether LCP requirements apply individual combustion plant with a rated thermal input of less than 15 MW shall not be considered. The proposed engines are each 10.58 MW_{th} and therefore the proposals do not fall under LCP requirements.

1.4.3 Whilst the facility is not an LCP, the Medium Combustion Plant Directive (MCPD)⁷ applies to combustion plan with a net rated thermal input between 1MW and 50MW. The proposed T2FGF will therefore need to comply with the requirements of the MCPD.

1.4.4 On this basis the T2FGF will comprise a MCP installation.

⁶ Directive 2010/75/EU of the European Parliament and of the Council, of 24 November 2010 on industrial emissions (integrated pollution prevention and control) (Recast)

⁷ Directive (EU) 2015/2193 of the European Parliament and of the Council of 25 November 2015 on the limitation of emissions of certain pollutants into the air from medium combustion plants

- 1.4.5 The T2FGF will be located adjacent to the Thurrock Flexible Generating Facility (TFGF) which is already permitted under a Part A(1) environmental permit EPR/MP3526SF issued to Thurrock Power Limited.
- 1.4.6 Given the proposals are to be operated by two separate legal entities the two facilities cannot be permitted under the same permit via a variation to permit EPR/MP3526SF. Further reasons why the facilities cannot be operated under the same permit are as follows:
- Financing of the facility is separate.
 - The investment case for T2FGF would be different to TFGF and would be more reliant on capacity market revenues.
 - A variation route would be a bar to financing the project as the lenders for TFGF would not agree to this.
 - T2FGF will be operated separately with separate drainage systems and separate emission points to air.
 - The facilities will operate under separate management systems.
 - T2FGF will contract out various elements of the operation of the facility and these will be under separate contracts to TFGF and not necessarily with the same contractors.
- 1.4.7 The operator of T2FGF commits to not concurrently operate with the TFGF, in the exception that T2FGF may operate simultaneously with TFGF in the event this is required as a result of a capacity market event. This restriction is capable of being managed through routine liaison between the two operators. However, in the unlikely event that direct communication between the operators of T2FGF and TFGF is not possible, T2FGF will still be able to regulate its operations effectively using the publicly available information on TFGF's proposed running periods provided through the balancing mechanism. This visibility ensures that T2FGF can reliably determine when it should not operate in order to comply with the permit condition.
- 1.4.8 In addition, both T2FGF and TFGF will be required to maintain accurate records of their operational hours as part of their respective permit obligations. Because these records provide a clear and auditable trail, the Environment Agency will be able to verify compliance by cross checking the operational timelines of both sites during inspections. If T2FGF were to operate during a period when operation is prohibited, the EA would have a robust evidential basis on which to take enforcement action for non-compliance.
- 1.4.9 For the above reasons the T2FGF will require a separate permit to the TFGF. However, whilst a separate permit is required and the two installations (TFGF and T2FGF) will operate under different environmental permits, the two activities are considered to form a multiple operator installation.
- 1.4.10 Plan 6 in Appendix B shows both TFGF and T2FGF, and the proposed multiple operator installation boundary.

1.5 Structure of the Permit Application

- 1.5.1 This section provides an overview of the proposals. This is supplemented by further details in Sections 2 – 5 as follows:
- Section 2 details the proposed management practices which will be in place at the plant, with specific detail covering:
 - Accident management;
 - Energy efficiency;

- Efficient use of raw materials and water; and
- Avoidance, recovery and disposal of wastes.
- Section 3 addresses the operational measures which will be in place to prevent and/or control the environmental effects of the proposal
- Section 4 identifies the nature of emissions from the T2FGF and details the monitoring systems that will be in place.
- Section 5 summarises the conclusions from the detailed assessments undertaken to predict the environmental effects from the T2FGF.
- Section 6 summarises the outcome of the detailed assessments of Best Available Techniques (BAT) for the key plant and abatement systems proposed.

1.5.2 The information provided within this application has been set out with due regard to the provisions of the MDPD. Where there are aspects of the operation of the facility that are not specified by the MCPD, although the facility is not a large combustion plant, regard has been given to the provisions of the BAT conclusions for large combustion plant set out in Commission Implementing Decision (EU) 2021/23264⁸ of 30th November 2021. Supporting documents, assessments and application forms are provided within the appendices list as set out in the contents page.

⁸ [Implementing decision - 2021/2326 - EN - EUR-Lex](#)

2 MANAGEMENT OF ACTIVITIES

2.1 General

- 2.1.1 An environmental management system (EMS) will be established on site and will cover those elements requiring environmental permitting. The EMS will broadly follow the key requirements of ISO14001. Although not subject to LCP BAT conclusions, as an installation the EMS will also address BAT conclusion general requirement for management systems.
- 2.1.2 The EMS will be underpinned by an environmental policy. All staff and external contractors will be made aware of the environmental policy as part of the induction training and a copy will be made available on site.
- 2.1.3 A system of keeping all relevant records including, but not limited to, the following will be developed and implemented prior to commissioning:
- Records of incidents, accidents and emergencies including details of follow-up.
 - Monitoring records, including those required by the environmental permit; and
 - Any other record to be kept as part of the permit.
- 2.1.4 Systems will be developed and implemented for undertaking audits, reporting of environmental performance, objectives, targets and programmes for future improvements.
- 2.1.5 Prior to commencing commissioning of the T2FGF, all key EMS systems will be in place.

2.2 Operations and Maintenance

- 2.2.1 Management systems will be put in place to ensure that those operations which have the potential to give rise to significant environmental effects are controlled. These systems will not only cover normal running but will also address abnormal operation and start-up and shutdown of the T2FGF.
- 2.2.2 Planned maintenance routines will be established to ensure all key plant components which have the potential to affect the environmental performance of the facility remain in good working order. Maintenance routines will draw on manufacturer's recommendations, modified as appropriate by operational experience during the lifetime of the T2FGF. Maintenance will be carried out by contractors in accordance with the operator's maintenance requirements

2.3 Competence and Training

- 2.3.1 All subcontractors working on the site will be subject to a competency assessment carried out by a third-party company under the supervision of the operator. In addition, where any subcontractor has any operational input to the site, they must fulfil any relevant obligations under the EMS.
- 2.3.2 Training will be provided to the subcontractor at the beginning of their contract term in the form of the site induction process. The subcontractor, in turn, will be responsible for training their own personnel and providing records of such training to the operator. This will include all maintenance staff carrying out routine maintenance at the facility.
- 2.3.3 Training will ensure that all staff are aware of relevant elements of the EMS including relevant operational procedures and the requirements of the environmental permit when issued. Induction procedures will be established for the identification and provision of training and updated knowledge for all personnel engaged in activities affecting environmental performance.

- 2.3.4 Records of training will be stored and maintained. As a minimum, records will include details relating to the date, type of training and training provider.

2.4 Organisation

- 2.4.1 A draft organogram for the T2FGF is provided in Appendix G to this document and indicates the main lines of responsibility. Roles and responsibilities will be clearly defined within the management system.
- 2.4.2 The plant will be remotely operated but an average of 6 to 8 personnel are likely to be present on the wider site, which incorporates a battery storage facility, each day to carry out routine checks and inspections. Maintenance is likely to be scheduled in campaigns/batches. There will be a greater contractor presence during these times.
- 2.4.3 The plant will be available for 24 hours a day, 365 days per year, subject to the limit on operating hours of 1,500 hours.
- 2.4.4 Further details on specific aspects of the management systems for the facility are provided in the following sections.

2.5 Accident Management

- 2.5.1 An Accident Management Plan (AMP) will be established prior to commencing operation of the proposed T2FGF. The AMP will detail those actions required in the event of an emergency or accident/incident. This will include small incidents such as minor spills and leaks and complaints, as well as major incidents such as fire. In particular, a system for recording and allocating appropriate follow-up for accidents, incidents and non-conformances will be established prior to operation
- 2.5.2 The site is remotely controlled and under normal day to day operation will be controlled via feedback from the automatic control system and visual monitoring of the site via the CCTV camera system.
- 2.5.3 Fire and gas detection and suppression systems, including smoke detectors and gas isolation, will be installed in each generator enclosure. These systems will link to the main control room (offsite) to alert the local engineer of an issue, who will respond directly and will then call the Fire and Rescue Service to attend if necessary.
- 2.5.4 There will be a link to a local support team in the event of an issue onsite, e.g. intruder alarm or an emergency (e.g. fire). Documented procedures will be in place which set out management measures should such an event occur including contacts details for local support.
- 2.5.5 To support this application, an initial Environmental Risk Assessment (ERA) is provided in Appendix C. The ERA includes an assessment of potential accident risks. This will be reviewed prior to commencing operation and maintained as part of the AMP throughout the operational life of the facility.
- 2.5.6 As part of the design process, the proposals will be subject to detailed HAZOP/HAZID with a view to minimising safety, health and environmental risks.

2.6 Site Security

- 2.6.1 The site will be surrounded by a combination of security fencing, including padlocked manual gates. Additional security will be provided by CCTV and intruder alarms.

2.7 Energy Efficiency

2.7.1 The following section provides information on energy consumption and basic energy efficiency measures, for the T2FGF. The gas reciprocating engines proposed to be installed will have an electrical efficiency of circa 45%, at LHV, when operating at 100% rating.

Basic Energy Requirements

2.7.2 Table 2-1 below provides a breakdown of the energy requirements of the T2FGF.

Table 2-1: Energy Requirement Breakdown

Energy Source	Annual Energy Consumption	
	Delivered MWh	Primary MWh
Natural Gas (usage during operation at maximum rating, assuming 22 engines operating for 1,500 hours, at LHV)	349,138 ⁽¹⁾	349,138
Electricity demand when the facility is not operating ⁽³⁾	4,138 ⁽²⁾	8,690 ⁽⁴⁾

(1) Based on data from Jenbacher, gas consumption @100% rating (10.58 MW per engine) and 1,500 hours average operation for 22 engines.

(2) Based on maximum parasitic load of 0.57 MW over the period during which the engines will not be running, i.e. one year less 1,500 hours average operation.

(3) Note that the parasitic load of 2.29 MW is supplied by the facility during operation. This is included within the delivered energy figure for natural gas above.

(4) Primary Energy factor of 2.1 taken from the EU Energy Efficiency Directive (EED) 2023.

2.7.3 Table 2-1 above provides details on the energy consumption associated with gas delivered to the T2FGF for the purpose of generating electricity and therefore is technically not consumed by the facility, it is simply converted to electrical output. A maximum of circa 2.29 MW of electricity will be associated with the parasitic load during operation, for start-up and shutdown periods and during non-running hours. Compared to usage associated with natural gas to generate energy the energy consumption of the plant is considered insignificant.

Operations and Maintenance

2.7.4 Operational procedures will be developed for the T2FGF. These procedures will incorporate measures aimed at ensuring the T2FGF operates efficiently and safely. Site maintenance and housekeeping systems will also be developed for the T2FGF, and relevant plant will be included within a preventative maintenance schedule.

Energy management Policy

2.7.5 Energy management will form an integral part of the T2FGF management systems. Systems will be developed to ensure that measures are in place to minimise energy use as far as possible. Training programmes will be in place to ensure that operational and maintenance staff are aware of relevant procedures for ensuring energy efficiency.

2.7.6 Efficiency parameters will be monitored, and energy minimisation features will be applied to all major energy uses where appropriate. On-site electricity usage will be minimised as far as possible within the constraints of the process optimisation.

CHP Ready Assessment

2.7.7 Although the T2FGF will be a new combustion power plant in excess of 50 MW capacity, under EA guidance⁹ the preparation of a CHP-Ready Assessment and Cost Benefit Analysis is not appropriate due to the limited operating hours and irregular and unplanned operating times of the installation which will be operated as a peaking plant.

2.7.8 Article 26 of the Energy Efficiency Directive (Directive (EU) 2023/1791)¹⁰ exempts peaking plant planned to operate under 1,500 hours per year as a rolling average over a period of five years. T2FGF meets this criterion.

Building Services

2.7.9 Energy requirements for the T2FGF will be low with minimal heating and lighting requirements. Energy efficient lighting will be used where possible.

2.8 Efficient Use of Raw Materials

2.8.1 Raw material requirements for the T2FGF will be limited in number. The main materials used within the T2FGF will include natural gas for fuel, ethylene glycol for the cooling circuits, and lubrication oil. Table 2-3 provides details of raw materials, expected usage, storage and potential environmental effects.

2.8.2 The gas engines will combust natural gas only. A typical composition for natural gas is provided within Table 2-2. Compared to alternative fossil fuels, natural gas has the advantage of being cleaner to handle and burns with no soot or solid residues produced. Furthermore, in terms of environmental benefits, there are fewer emissions to air associated with natural gas in comparison with other fossil fuels, and there is a reduced potential for accidents associated with storage. Gas will be supplied by National Grid via the National Transmission System to the gas reception and pressure reduction station at TFGF and subsequently supplied to T2FGF via pipeline.

Table 2-2: Typical natural gas composition

Compound	Typical Mole (per cent)
Nitrogen	2.22
Carbon Dioxide	0.29
Methane	93.23
Ethane	3.24
Propane	0.67

⁹ CHP Ready Guidance for Combustion and Energy from Waste Power Plants

¹⁰[Directive - 2023/1791 - EN - EUR-Lex](#)

REPORT

Compound	Typical Mole (per cent)
Butane	0.26
Pentane	0.09
Total Sulphur	<0.001
Net Calorific Value	28 MJ/m ³
Gross Calorific Value	40.1 MJ/m ³

- 2.8.3 The current design includes for 22 lubrication oil tanks of 200 litres each, which will require occasional topping up. All tanks will be positioned within bunded engine rooms. Lubrication oil will be delivered in intermediate bulk containers (IBCs) which will be placed on portable bunds before being connected to the oil storage tanks for transfer of the oil. No other additional chemicals will be stored at the T2FGF.
- 2.8.4 The T2FGF will utilise a closed-circuit cooling water (CCCW) system which will utilise a water / glycol mix and consequently the area containing the fin fan coolers and CCCW circulating pumps will be bunded. No glycol will be stored onsite. If a replacement or replenishment is needed, this will be brought on to site as required.
- 2.8.5 A transformer will be present within the installation and will contain 51,750 litres of transformer oil within a closed system, to provide cooling and electrical insulation, while also protecting internal components. The transformer is located within a bund.

REPORT

Table 2-3: Raw Materials Usage

Raw Material	Nature	Expected Usage (approx..)	Storage	Fate	Environmental Effects	Alternatives
Natural Gas	Natural Gas	22,370 Nm ³ /hour	No natural gas will be stored on site. Gas connection will supply plant.	Combusted within gas engines.	Various emissions to air. Potential impacts arise through acidification, vegetation and health effects and global warming.	There is no back-up fuel provision for the engines. However, the engines have been selected because they can be adapted to run on a hydrogen/natural gas mix.
Lubricating Oil	Refined hydrocarbon with additives	0.97 kg/hr	Stored in 22 No. 200 litre bunded tanks(2). Bunded engine rooms will have capacity for 110% of the stored oil volume.	Used primarily within gas engines and discharged as waste oil for disposal	Harmful to aquatic organisms. May cause long-term adverse effects in the aquatic environment. Not readily biodegradable.	No practical alternative. There is a choice of supplier, but quality is specified by engine manufacturer
Ethylene glycol	Water glycol mixture (37% glycol)	Variable - Closed loop system, would only be topped up following a leak, or drained and replaced periodically.	None stored. Quantity limited to CCCW inventory = 9,240 litres of ethylene glycol water mixture in the cooling systems.	Contained within the CCCW system and in the event of a leak within a roof bund.	Under normal operations there will be no associated emissions from the CCCW system.	
Transformer Oil	Distillates (Fischer -	Variable - Closed system which	Quantity limited to inventory within	Provides cooling and electrical	Under normal operations there	

REPORT

Raw Material	Nature	Expected Usage (approx..)	Storage	Fate	Environmental Effects	Alternatives
	Tropsch), heavy, C18-50 – branched, cyclic and linear	would be exchanged periodically as required.	transformer, of a total 51,750 litres.	insulation, while protecting internal transformer components.	will be no associated emissions from the transformer.	

(1) Based on average 1,500 operating hours per annum and gas volume of 1,042 Nm³ /hr at maximum rating.

(2) Subject to detailed design

Water Use

- 2.8.6 As stated in paragraph 2.8.4, a CCCW system will be installed which has no associated process discharge under normal operation. No process waters will be generated by the plant, hence there will be no associated process water releases to surface water or sewer from the T2FGF.
- 2.8.7 No fire-fighting water will be stored; details of fire detection and suppression systems are provided in paragraph 2.5.3 and fire management procedures will be included within the AMP.

2.9 Avoidance, Recovery and Disposal of Wastes

- 2.9.1 It is anticipated that waste generation during operation of the T2FGF will be low, primarily resulting from maintenance activities. Waste generation will be from the following limited sources: used gas engine air intake filters; separated oil or sludge from oil/water separators; and used lubricating oils.
- 2.9.2 Disposal of wastes generated will be incorporated within maintenance contracts. All contractors carrying out maintenance on the plant will be responsible for wastes generated from their activities. The operator will be supplied with copies of records of waste removed from the site and associated recovery/disposal routes.
- 2.9.3 Waste minimisation audits will be carried out in accordance with the permit requirements. The audit will aim to minimise raw material consumption and therefore prevent the generation of waste.

3 OPERATIONS

3.1 Overview of T2FGF proposal

- 3.1.1 The proposed facility will consist of 22 x 4.763 MWe spark ignition reciprocating gas engines and will operate to provide additional energy security during periods of peak electricity consumption within the UK. The combined net thermal input of the T2FGF is approximately 104.78 MWth (22 x 11.17 MWth engines in normal power mode, at LHV). Operation will not be continuous but will run as a flexible back up supply for up to 1,500 hours per year .
- 3.1.2 The engines will be capable of operating in high power mode, with an electrical output of 5 MWe, for up to 15 hours per year to meet a total electrical output of approximately 110 MWe, if required.

3.2 Fuel and Raw Material Supply, Storage and Handling

- 3.2.1 Natural gas will be delivered to the T2FGF via a new gas pipeline to be built to intercept the existing high-pressure National Grid gas national transmission system (NTS). Fuel gas will be supplied via on-site reception equipment consisting of safety isolation valves, filters, pressure regulation, metering and distribution piping as required.
- 3.2.2 Within the T2FGF there are dedicated lubrication oil storage tanks located within a bunded containment area. The 22 No. lubricating oil, of 200 litres each. The lube oil tanks will only be re-filled whilst a maintenance engineer from the engine Maintenance Contractor is on site to oversee the delivery. All delivery staff and maintenance engineers will be trained and will hold contact details for the remote monitoring centre to alert operatives in the event of an incident. Contact details will also be held local to the filling point. A spill kit will be located within the engine block.
- 3.2.3 Waste oil will be transferred to IBCs for collection from site for reprocessing or appropriate disposal. During transfer of waste oil, IBCs will be placed upon temporary bunds.
- 3.2.4 An ethylene glycol/water mixture will be used in the cooling circuits. In the event that a cooling circuit requires a top-up, or a spillage is identified, the engine Maintenance Contractor will be responsible for overseeing this and notifying the Operator of any spillage incident and actions taken in accordance with the incident reporting system.
- 3.2.5 Should a loss of pressure be detected in an individual CCCW, a valve on the roof will automatically be closed to create a bund on the roof which will prevent glycol from contaminating rainwater runoff.
- 3.2.6 There will be no other raw materials to be used by the T2FGF.

3.3 Combustion of Fuel and Power Generation from T2FGF

- 3.3.1 The spark ignition reciprocating gas engine generator sets will be housed within individual enclosures. Each gas engine will have an air intake system, combustion chamber, an exhaust system and an electrical generator, together with common auxiliary plant.
- 3.3.2 The air intake system will feature filters to remove any contamination present, such as dirt, dust or grit, which could damage or reduce efficiency of the plant.
- 3.3.3 Within the engines, gas and combustion air are ignited by means of a spark plug. As the burning mixture of fuel and air expands, a piston is pushed transferring energy released from combustion to an engine flywheel, from which a connected alternator is used to generate electricity.

- 3.3.4 Clean combustion technology will be incorporated as detailed in section 4.1.
- 3.3.5 Automatic monitoring and control systems will be in place to control the combustion process to ensure that emissions from combustion are consistent with the emission limit values in place for the engines. The control systems will be able to monitor various aspects of operation including efficiency and fuel use over the full range of ambient and fuel conditions.
- 3.3.6 The exhaust system for the gas engines will have a silencer and ducting to convey the hot gases from the engines to 11 exhaust stacks each housing two flues. The 22 flues will be designated as release points A1 – A22.

3.4 Transformer

- 3.4.1 The electricity generated will be exported to the Grid via three step-up transformers. Further details are discussed in Section 2.8.5.

3.5 Cooling System

- 3.5.1 The CCCW system will comprise the main fin fan cooler, CCCW pump, system header tank, associated pipework and valves.
- 3.5.2 The CCCW system will be closed-loop filled with a 37% glycol/water mix and a corrosion inhibitor added. Top up of the glycol will be by a make-up connection to an IBC as required. The IBC will be brought to site for the system top-up and subsequently removed when complete.
- 3.5.3 The number of fans to be operated at one time will be dependent on the number of engines in operation, ambient weather conditions and the engine operating temperature at the time. This will be controlled to minimise the plant's electrical energy usage.
- 3.5.4 The noise assessment provided within Appendix F has assessed the potential for noise generation on site, including noise from operation of the fin fan coolers.

3.6 Start up and Shut down Procedures

- 3.6.1 The facility will be capable of rapid start up when generation is required and a controlled shut down after use. The expected definitions of the start-up and shut-down periods are given below:
- “Engine Start-up Period” means the time from receipt of an instruction to start the gas reciprocating engine, synchronization with the respective electrical network, up to the time when the engine achieves a state of steady electrical load.
 - “Engine Shut-down Period” means the time from receipt of an instruction to stop the gas reciprocating engine, rejection of engine load and isolation from the respective electrical network up to the time the gas reciprocating engine ceases to rotate.

3.7 Commissioning

- 3.7.1 A commissioning plan will be developed for the T2FGF to outline the commissioning and associated monitoring activities. Commissioning will include the following:
- Tests to ensure that the T2FGF output and efficiency meets the guaranteed values,
 - Tests to ensure that the T2FGF operates safely across the full load range across a range of operating parameters,

- Tests to ensure that the T2FGF operates reliably throughout a pre-determined set of handling trials designed to simulate real world operation and dispatch scenarios,
- Tests to ensure that the emissions to air from the T2FGF meet the guaranteed values,
- Tests to ensure that the noise emissions from the T2FGF meet the guaranteed values,
- Various other tests of the T2FGF equipment to confirm the functionality and safety of the plant.

4 EMISSIONS AND MONITORING

4.1 Emissions to Air

- 4.1.1 Emissions to air from the T2FGF will result from exhaust gases generated from combustion of natural gas within the gas engines. Natural gas is considered to be a clean fuel compared to alternatives and the primary air pollutants of concern from the gas engines with the potential to impact on human health are NO_x and CO. The effects from NO_x emissions to air also need to be considered in relation to potential impacts at ecological sites including effects from deposition.
- 4.1.2 The 11 stacks, each housing two flues will each be 20 m in height. This stack height has been subject to a stack height assessment to ensure the selected height provides adequate dispersion (see Appendix E). The positions of the stacks are indicated on Plan 4 in Appendix B.
- 4.1.3 The combined thermal input of all 22 engines is greater than 50MW but, under aggregation rules, the site is not a Large Combustion Plant. Therefore, Medium Combustion plant controls and emission limit values apply. The emissions from each engine will comply with the ELV for NO_x of 95 mg/Nm³¹¹.
- 4.1.4 Combustion technology will be utilised to minimise generation of pollutants, with the use of control systems in place to ensure that emissions are within the emission limits stated for the T2FGF.

4.2 Emissions to Land

- 4.2.1 There will be no emissions to land associated with operation of the T2FGF.

4.3 Emissions to Surface Waters and Sewer

- 4.3.1 No process waters will be generated by operation of the T2FGF; hence there will be no associated process water discharge to surface water or foul sewer from the T2FGF.
- 4.3.2 Surface water run-off from the T2FGF (roofs, roads, hard standing, etc.) or from washing of equipment will be collected within a drainage system which drains to a swale. Plan 5 in Appendix B details the surface water drainage arrangement.
- 4.3.3 Discharge from the swale into the drainage ditch will be controlled.
- 4.3.4 The existing network of land drains into which surface water run-off will be discharged ultimately flow into the river Thames.

4.4 Emissions to Groundwater

- 4.4.1 The T2FGF will not include any point source emissions to ground or groundwater.

4.5 Fugitive Emissions to Air

- 4.5.1 Management systems will be in place at the T2FGF to ensure that the risk from fugitive emissions to air is minimised, for example through regular inspection and maintenance of plant. Protection systems will include automatically triggered safe plant start-up and emergency shut-down in the event of major faults in equipment. Scheduled maintenance

¹¹ Reference conditions for normalised concentration are 273.15K, 101.3 kPa, dry and 15% oxygen.

of natural gas containment systems will be extended to incorporate the T2FGF, to minimise the risk of fugitive emissions of gas to air.

- 4.5.2 It is anticipated that fugitive emissions of odour will not be significant for the T2FGF. The site uses unodourised natural gas which means there is no potential for odour from this source.

4.6 Fugitive Emissions to Surface Water or Sewer

- 4.6.1 The only process waters associated with operation of the peaking plant relate to the CCCW system. The area containing the fin fan coolers and CCCW circulating pumps will be bunded so the risk of accidental discharge of process waters to controlled waters is minimised.
- 4.6.2 In terms of potential contamination from oils stored on site, the lubrication oil storage tanks and waste oil storage will be bunded to ensure that should an accidental spillage occur, the oil remains isolated from drainage systems prior to clean up.

4.7 Noise and Vibration

- 4.7.1 The main sources of noise from the generating station would be those associated with combustion, including the gas engines, exhaust stacks and fin fan coolers. Since natural gas will be delivered through pipelines, vehicle movements to the facility will be infrequent, hence noise from these sources will be insignificant.
- 4.7.2 Noise emissions from the facility will be controlled through the application of noise control methods/techniques, including housing the gensets in concrete enclosures, attenuation of the genset air inlets and outlets, and silencers fitted to the genset exhausts.
- 4.7.3 The gas engine exhaust stacks will be fitted with silencers, the engines will be installed within concrete containers, and noise from the fin fan coolers will be controlled by design. The assessment considers the facility to have applied all appropriate preventative measures to minimise noise pollution, in particular with the application of 'best available techniques' (BAT), in accordance with the Environmental Permitting Regulations.
- 4.7.4 The T2FGF will be operated in accordance with a noise management plan, see Appendix F.

4.8 Monitoring and Reporting of Emissions

Emissions to Air

- 4.8.1 The gas engine stacks will incorporate suitable sampling ports for monitoring of emissions which will be designed in accordance with EA Monitoring stack emissions: measurement locations guidance 10¹².
- 4.8.2 Periodic monitoring will be carried out, measuring NO_x, CO, Oxygen and water vapour. This will be undertaken in accordance with appropriate methodologies for sampling as set out in EA Guidance "Monitoring stack emissions: techniques and standards for periodic monitoring" (formerly Technical Guidance Note M211¹³).
- 4.8.3 Periodic monitoring will be carried out on a rolling programme to demonstrate compliance with emission limits. Due to the large number of gas engines, periodic monitoring of all 22 gas engines annually is impractical. It is, therefore, proposed that emissions from one third

¹² [Monitoring stack emissions: measurement locations - GOV.UK](#)

¹³ [\[Withdrawn\] M2 monitoring of stack emissions to air - GOV.UK](#)

REPORT

of the engines (8 engines) are monitored each year, which means that all engines will be monitored every three years in line with MCPD requirements.

4.8.4 Given the identical nature of the engines, it is proposed that emissions for the whole site may be extrapolated from the sample of engines monitored each year, allowing for differing hours of operation.

4.8.5 Records will be kept of all emissions testing results and operating hours for each engine. Monitoring of releases to air will be controlled as part of the EMS

4.8.6 Emissions monitoring for releases to air will be undertaken as set out in Table 4-1.

Table 4-1: Summary of Monitoring of Emissions to Air

Pollutant	Emission Point	Monitoring Method	Monitoring Frequency	MCERTS certified
NOx	A1-22	BS EN 14792	One third of flues annually	Yes
CO	A1-22	BS EN 15058	One third of flues annually	Yes
Oxygen	A1-22	BS EN 14789	One third of flues annually	Yes
Water vapour	A1-22	EN 14790	One third of flues annually	Yes

4.8.7 Monitoring results will be corrected to standard references conditions and reported to the EA, as required by the permit.

4.8.8 Emission limits to air will be regarded as having been complied with where monitoring data confirms that emission values do not exceed the limits specified in the permit, over the corresponding monitoring period at specified reference conditions.

Emissions to water and land

4.8.9 Water discharges will result from rainwater surface run-off from roofs, roads and concrete surfaces, but there will be no process water discharges associated with the T2FGF. Rainwater will be collected either in the swale on the northern side of the peaking plant. Prior to the release of water from the swale a visual assessment will be carried out to ensure no presence of an oil film.

4.8.10 There will be no discharges to land from the T2FGF.

Process Monitoring

4.8.11 Key process monitoring will be carried out to monitor the plant performance including, water usage, energy usage (natural gas and electricity), hours of operation for each engine and power generated. These performance parameters will be reported on an annual basis, in keeping with the permit.

4.8.12 The plant performance and equipment will be continuously monitored, and a system will be in place to optimise performance.

5 IMPACTS

5.1.1 To support this application a number of environmental assessments have been performed. The full details of these assessments are appended to this application and a reference to the full assessment is given where relevant below.

5.2 Emissions to Air

5.2.1 An air quality impact assessment has been undertaken to support this application, and full details of the assessment are reported in Appendix E – Air Quality Impact Assessment.

5.2.2 Emissions to air from the T2FGF will result from exhaust gases generated from combustion of natural gas within the gas engines. The primary air pollutants of concern from the gas engines with the potential to impact human health are NO_x and CO.

5.2.3 The approach to the assessment of emissions from the exhaust stacks has involved the following key elements:

- Establishing the background Ambient Concentration (AC) from consideration of Air Quality Review & Assessment findings and assessment of existing local air quality through a review of available air quality monitoring and Defra background map data in the vicinity of the proposed site.
- Quantitative assessment of the operational effects on local air quality from the proposed stack emissions utilising a “new generation” Gaussian dispersion model, ADMS 6.
- Assessment of Process Contributions (PC) from the T2FGF, and assessment of resultant Predicted Environmental Concentrations (PEC), taking into account cumulative impacts through incorporation of the AC.

5.2.4 Dispersion modelling was undertaken using ADMS 6, a version of the ADMS (Atmospheric Dispersion Modelling System) which calculates the mean concentration over flat terrain, whilst allowing for the effect of plume rise, structures, complex terrain and deposition.

5.2.5 Several meteorological parameters were required for the dispersion modelling, including wind speed, wind direction, cloud cover and temperature. Dispersion model simulations have been performed using five years of data from Gravesend, between 2013 and 2017. The Gravesend meteorological station was closed in 2018, so this is the most recent data available.

5.2.6 The effect of terrain and wake effects from surrounding structures has been incorporated into the dispersion model. Surface roughness of terrain has also been incorporated with a surface roughness length of 0.5 m assigned to represent the average surface characteristics across the study area. This surface roughness length is typical of parkland and open suburbia. This is unchanged from the original DCO assumptions.

5.2.7 Dispersion modelling has been undertaken for a worst-case assumption that all 22 engines will operate all year to ensure the worst-case meteorological conditions were assessed. In reality the engines will run for up to 1,500 hours per year and the probability of all engines running at the same time in the hours with the worst-case meteorological conditions is low. The PECs presented are also a worst-case scenario as they assume that the neighbouring TFGF will be operating at the same time.

5.2.8 It was also assumed that emissions of NO_x would meet the ELV of 95 mg/m³ at the MCPD reference conditions of dry, 273.15°K, 101.3 kPa and 15% O₂. CO concentrations are based on manufacturers data which indicate a CO concentration of 400 mg/Nm³ at MCPD reference conditions.

- 5.2.9 The effects of the proposed development have been assessed at the façades of local existing receptors. All human receptors have been modelled at a height of 1.5 m, representative of typical head height. These are the same receptors modelled for the already permitted Thurrock Flexible Generation Facility (TFGF) adjacent, allowing for the contribution from the TFGF to be included in the background concentrations.
- 5.2.10 Emissions from the T2FGF have been assessed against relevant Air Quality Assessment Levels (AQALs). Long-term (annual-mean) NO₂ has been modelled for comparison with the relevant annual mean objective of 40 µg/m³. For short-term NO₂, the objective is for the hourly-mean concentration to not exceed 200 µg/m³ more than 18 times per calendar year, equivalent to the 99.79th percentile of hourly NO₂. There is no long term Environmental Assessment Level (EAL) for CO, therefore CO concentrations have been compared with the short term 8-hour mean EAL of 10,000 µg/m³. Note that CO also has an hourly mean EAL of 30,000 µg/m³, however the comparison presented in the AQ assessment has used the more conservative 8-hour mean EAL.
- 5.2.11 Modelling has assumed a 70% conversion of NO to NO₂ for annual average NO₂ concentrations. Justification of the conversion factors is provided within the Air Quality Assessment.

Stack Height Determination

- 5.2.12 The stack height selected for the optimum dispersion of pollutants from the exhaust stacks is determined to be 20 m, based on the Stack Height Determination in Appendix E to the AQ Impact Assessment. This height has been identified as the height at which the wake effect of nearby structures is overcome.

Dispersion Modelling Assessment Results

- 5.2.13 The results show that the maximum short-term PC at the receptors considered in the assessment is 14.8% of the relevant EAL for NO₂. The maximum short-term PEC at receptors is 89% the EAL. However, the modelling represents a worst-case scenario of all engines operating together at maximum output all year. Furthermore, the emissions have been modelled at the MCPD emission limit. Actual emissions are expected to be below the ELV. As such, the short-term NO₂ impacts, based on modelling across the grid, are not considered to be significant.
- 5.2.14 The predicted long-term PC exceed 1% of the EAL at some locations but when the PC is added to the background concentration the PEC does not exceed 100% of the EAL and the impacts can be screened out as not significant at all receptors.
- 5.2.15 On this basis, the impact of NO_x emissions to air can be screened out as insignificant.
- 5.2.16 The predicted PCs for CO do not exceed 10% of the EAL at any receptor and the impacts can be screened out as not significant at all receptors.

5.3 Assessment of Impacts at Ecological Receptors

- 5.3.1 An assessment of air quality impacts for nearby ecological receptors has been made and can be found within the Air Quality Assessment within Appendix E.
- 5.3.2 In line with EA guidance for air impact screening for conservation areas¹⁴, the assessment has considered the impacts from the installation in terms of NO_x concentrations, nutrient

¹⁴ Environment Agency (2016), Screening for protected conservation areas. Available at: [Air emissions risk assessment for your environmental permit - GOV.UK](#)

nitrogen deposition and acid deposition for the ecological sites identified within the EA's Nature and Heritage Conservation Screening Report.

- 5.3.3 The assessment has determined the Critical Loads for both Nutrient Nitrogen Deposition and Acidification and compared these to the PC resulting from the operation of the installation following variation. Critical Loads are the quantity of pollutant deposited below which significant harmful effects on sensitive elements of the environment do not occur.
- 5.3.4 For NO_x at ecological receptors, the impacts were screened out as insignificant.
- 5.3.5 The assessment has concluded that, using professional judgement, the resulting air quality effects on human and ecological receptors are considered to be 'not significant' overall.

5.4 Emissions to Water and Sewer

- 5.4.1 No process waters will be generated from the operation of the gas engines; hence there will be no process water discharge to surface water or foul sewer from the plant.
- 5.4.2 Surface water drainage, including surface water run-off from the plant (roofs, roads, hard standing, etc.), will flow into the surface water drainage system. This drainage system incorporates oil separation and retention facilities. The drainage system discharges into an isolated swale to prevent uncontrolled discharge.
- 5.4.3 In the event that water needs to be discharged from the swale to local surface water drainage channels, which ultimately discharge into the Thames, a visual assessment of the swale water to check for evidence of oil or grease and tests for the presence of glycol will be undertaken prior to discharge.
- 5.4.4 The discharge point is referenced as point W1 on the site plan; this is where surface waters are discharged to the offsite land drain system.

5.5 Noise

- 5.5.1 A Noise Impact Assessment (NIA) has been carried out and is included with this application as Appendix F – Noise Impact Assessment.
- 5.5.2 The TFGF and T2FGF will be very unlikely to operate concurrently due to the commitment discussed in Section 1.4.7. As such, a cumulative noise assessment considering both TFGF and T2FGF has not been undertaken as this would be very unlikely to ever occur and then only for a short period of time.
- 5.5.3 The noise assessment supporting this application has been carried out on a conservative basis to represent worst case conditions.
- 5.5.4 The results of the noise assessment carried out for the facility can be summarised as follows:
- The design of the facility will incorporate in design mitigation measures to minimise noise levels to the lowest reasonably practicable level.
 - The BS 4142:2014 assessment indicates that raised sound levels of 1, 5 and 7 dB above the representative background sound levels during the daytime, evening and night-time periods, respectively with all engines operating at maximum load.
 - However, the assessment concludes that "significant adverse impacts would not occur", due to:
 - Low Rating Levels and resultant ambient sound levels not noticeably changing or being of a magnitude likely to increase the risk of annoyance in external amenity areas or sleep disturbance.

- The risk of adverse impact during night-time periods being significantly reduced as, for only around 88 hours of the night-time period (23:00 to 07:00 hours) over the course of a year, would the facility be likely to be operational, i.e. 3% of the night-time period on average. Also, Rating Levels would often be lower than considered, reflecting the reduced power demand.
- On the basis that significant adverse impacts would be avoided, and adverse impacts minimised, the proposed development would comply with the 'Noise Policy Statement for England' (NPSE), which sets out the long-term overarching vision of Government noise policy.

6 BAT ASSESSMENT

- 6.1.1 The following section provides supporting information for the selection of the following: • Combustion technique and operating hours (this includes consideration of NO_x performance, ammonia and global warming potential (GWP)).
- Stack configuration.
 - Control of emissions to air (not included in the assessment of combustion technology above).
 - Cooling system.
- 6.1.2 The proposed engines are medium combustion plant for which there is currently no defined BAT requirements. Therefore, in reviewing BAT for the proposed new engines consideration has been given to Best Available Techniques for combustion plant operating in the balancing market - Final report. Reference number 37641C001Ri4 (June 2016) (the DECC BAT Report) as well as emissions performance established by the MCPD. The pre-application advice note included as Appendix H identifies matters to be considered within the BAT assessment and these issues are all covered under the various headings below. Although not directly applicable to the T2FGF, where relevant reference to the LCP BAT Reference (BRef) Document and associate BAT Conclusions¹⁵ is made.
- 6.1.3 The DECC BAT Report is appended as Appendix I to this document.

6.2 Selection of Combustion Technique and Operating Hours

- 6.2.1 The proposed engines are being installed to provide fast responding peaking plant to generate electricity for export to the grid. Available technologies considered within this section are gas turbines and gas engines. An alternative option is use of diesel compression ignition engines however, implementation of this combustion method would result in a wider range of pollutants generated from combustion, including SO₂ and particulates and greater emissions of NO_x. Furthermore, there would be additional requirements for diesel storage (and associated increased potential for accidents), as well as a greater number of vehicle movements on site for fuel delivery. For these reasons, implementation of diesel compression ignition engines has been ruled out from further consideration. Selection of the fuel to be burned and the selection of natural gas over other fuels for power generation have previously been discussed in section 2.
- 6.2.2 The primary BAT issues associated with combustion plant, specifically peaking plant, are ability to meet demand for electricity, control of emissions to air and energy efficiency. Consideration of emissions to air is detailed in the next section.
- 6.2.3 Fundamentally, the operating nature of peaking plant requires rapid response times and therefore short start up times. Combined cycle gas turbines have significantly longer start-up times compared to gas engines and consequently cannot provide the rapid response that gas engines offer. The use of open cycle gas turbines does not support the highest levels of efficiency, with efficiencies significantly lower than those of modern gas engines as well as having longer start-up times. Consequently, the preferred technology to provide peaking plant duty is spark ignition reciprocating gas engines.
- 6.2.4 The T2FGF has been designed to provide a rapid and flexible response to demands on the national grid. Therefore, a larger number of smaller engines has been selected to meet that flexibility of demand and response time. Furthermore, the DECC BAT Report identifies a negative correlation between start-up time and the environmental performance of the plant. Therefore, plant with a rapid start-up and shut-down time helps to further minimise

¹⁵ LCP Bref BAT Conclusions - [Implementing decision - 2021/2326 - EN - EUR-Lex](#)

emissions from a facility that is designed to accommodate frequent short run times in response to demand on the Grid.

- 6.2.5 The proposed gas engines have an efficiency of circa 45% measured on an LHV basis. The LCP BAT Conclusions¹⁶, indicates that for new gas engines an electrical efficiency of 39.5% to 44% is BAT. The efficiency of the proposed engines to be installed is above the upper end of the BAT range. Gas engine technology does not require supplementary process water for operation.
- 6.2.6 Overall, the use of gas engines is considered to be BAT when considered for use at the proposed peaking plant. Whilst it is recognised that other modes of operation with alternative technologies can provide energy efficiency benefits, these alternatives cannot provide the necessary flexibility required for a peaking plant, where rapid start up times are necessary to ensure security of energy supply. The units proposed exceed BAT levels for energy efficiency benchmarks for this type of technology.

6.3 Control of Emissions to Air

Emissions to Nitrogen Oxides

- 6.3.1 Various methods are available for controlling emissions to air from the proposed new gas engines, both primary measures which focus on controlling the process to avoid emissions resulting from the combustion process and secondary measures, which are end-of-pipe measures to abate emissions prior to release to air.
- 6.3.2 Table 6-1 summarises to options for controlling emissions of NO_x from new balancing gas engines, as set out in the DECC BAT Report. The proposed engines will incorporate an enhanced lean burn system that uses a special combustion chamber configuration for more efficient combustion and directly links power output, boost pressure, fuel temperature and corrects engine parameters to ensure the engine permanently meets the required nitrogen oxide emission level.
- 6.3.3 This type of enhanced lean burn technology is considered to be BAT for spark ignition gas-fired reciprocating engines, according to the DECC BAT Report.
- 6.3.4 Application of BAT for this type of engine is expected to result in emissions of NO_x in waste gases at <95 mg/m³ (at 15% oxygen), i.e., within the MCPD emission limit for this type of engine.
- 6.3.5 SCR also has the potential to mitigate NO_x emissions. The operation of SCR requires the use of a catalyst (which requires periodic replacement) and reduces the energy efficiency of the plant as a whole. In particular, the use of a catalyst in SCR systems requires operation across an optimum temperature window. The DECC BAT Report concludes that SCR is not BAT for the engines to be used at T2FGF on the basis of economic and technical feasibility.
- 6.3.6 The air quality assessment has concluded that emissions to air from the proposed facility are not significant both in terms of effects on human health and on ecological receptors. This was based on worst case emissions at the ELV of 95 mg/m³ (at 15% oxygen) over 1,500 hours per year at maximum load.
- 6.3.7 Given there are no significant air quality effects associated with the proposed peaking plant using lean burn technology, BAT for NO_x control for the peaking plant is, therefore, considered achieved through the incorporation of lean burn techniques to avoid NO_x generation. Further, operation to the MCPD emission limit is also considered BAT, this is consistent with BAT guidance for combustion plant operating in the balancing market

¹⁶ [Implementing decision - 2021/2326 - EN - EUR-Lex](#)

which concludes that for plant operating 500 - 1,500 hour per annum nothing more stringent than the ELVs under IED and MCPD will apply (MCPD limits apply to the T2FGF).

Table 6-1: NO_x Control Options

Technique	BAT
Unabated	Not recommended
Lean Burn	Potential option under certain hours of operation
Enhanced Lean Burn	BAT option BAT option

Emissions of Carbon Monoxide

6.3.8 LCP BAT Conclusion number 44 states that BAT for controlling CO emissions is to ensure optimised combustion and/or to use oxidation catalysts. Control and management of combustion conditions within the proposed gas engines, including performance monitoring, process control techniques and suitable maintenance regimes, will be in place to minimise CO emissions.

Other Emissions to Air

6.3.9 The LCP BREF acknowledges that emission of dust and SO₂ associated with combustion plant burning natural gas are very low without the need for plant level controls to be applied. On this basis further consideration of abatement/controls for these pollutants is not considered necessary.

Dispersion of Emissions

- 6.3.10 The proposed stack height of 20 m above ground level has been subject to a stack height assessment and dispersion modelling to demonstrate that emissions will be adequately dispersed such that the effect on human health and sensitive ecological receptors will not be significant has been carried out.
- 6.3.11 A total of 11 stacks is proposed, each housing two flues. All stacks and flues will discharge vertically upwards with no obstruction to the flow of emitted waste gases.
- 6.3.12 The stacks combined with the limit on hours of operation are, therefore, considered to meet BAT.

Emission Monitoring

- 6.3.13 Monitoring of emissions is proposed on a rolling annual basis to demonstrate compliance with the emission limit value (ELV) for Oxides of Nitrogen (NO_x) of 95 mg/m³ as set out in Annex 2 of the Medium Combustion Plant Directive. Further detail is provided in section 4.8.
- 6.3.14 Annual monitoring is also proposed on the same basis for emissions of carbon monoxide (CO), plus water vapour and oxygen content for reference purposes. Given that the engines and flues are identical, the proposed monitoring frequency of one third of flues each year complies with the requirements of the MCPD and monitoring methods are

aligned with those set out in EA monitoring guidance¹⁷. On this basis the proposed monitoring is considered to meet BAT.

6.4 Noise Emissions

- 6.4.1 Noise and vibration issues are common with the operation of combustion plant but with effective mitigation measures these noise effects can be controlled. For the proposed engines the noise assessment has predicted that with appropriate mitigation no significant effects will occur. A noise management plan has been produced which sets out how the facility will manage noise from operation of the T2FGF throughout the operational life of the facility.
- 6.4.2 Noise controls will meet the requirements of BAT 17 of the LCP Bref, including:
- Housing engines within concrete enclosures.
 - Installing silencers in flues.
 - Operating a schedule of routine maintenance and inspection of all plant.
- 6.4.3 The noise assessment concludes that the techniques applied for noise control minimise noise emissions as far as reasonably practicable and in this regards the T2FGF has applied all appropriate preventative measures to minimise noise pollution, in particular with the application of 'best available techniques' (BAT).

6.5 Energy and Resource Efficiency

- 6.5.1 Gas turbines have previously been discounted as BAT for this facility. In terms of thermal efficiency, the next most efficient technology, according to the DECC BAT Report, is Enhanced Lean Burn gas reciprocating engines. As noted in Section 6.2 the efficiency of the proposed engines is above the higher end of the BAT efficiency range for gas engines as set out in the LCP BAT conclusions.
- 6.5.2 As discussed in Section 6.2, the selected engines require no water supply and will produce no process water to be disposed of.
- 6.5.3 Having an assured mains gas supply to the site means that fuel will not be delivered by road, thus further reducing the overall environmental impact of the facility.
- 6.5.4 The engines and auxiliary plant will be subject to a schedule of routine checks, inspections and maintenance to ensure that the facility operates efficiently.

6.6 Meeting Future Energy Demands

- 6.6.1 The target for net zero UK carbon emissions by 2050 has now been set. To achieve this ambitious target alternatives to natural gas for energy generation are high on the agenda, with hydrogen and green ammonia very much under consideration.
- 6.6.2 Once fully commercially available, hydrogen is well suited to combustion within the proposed engines. Although current proposals are based on burning natural gas, once hydrogen fuel becomes available, the selected engines could readily switch to burning these alternative fuels subject to certain retrofit modifications.

¹⁷ Monitoring stack emissions: techniques and standards for periodic monitoring [Monitoring stack emissions: techniques and standards for periodic monitoring - GOV.UK](#)

6.7 Selection of Cooling System

6.7.1 A number of types of cooling system could be employed for this type of facility which include the following air or water-cooled methods:

- Once-through river water,
- Evaporative cooling tower,
- Hybrid cooling tower;
- Fin-fan coolers.

6.7.2 As highlighted within the EU BREF for industrial cooling systems¹⁸, there is a balance of environmental considerations when considering the cooling option to be employed and that any of the methods below may be considered BAT, depending on circumstance. All of the above options have their relative advantages and disadvantages for their operation as detailed within Table 6-2.

Table 6-2: Comparison of cooling systems

Cooling System	Advantages	Disadvantages
Once through cooling	Lower energy consumption Low noise impact Low visual impact	Possible fish kill Possible thermal release effect in water course Biofouling Biocide discharges
Evaporative cooling tower	Lower Energy Consumption	High visual impact Water consumption Chemical treatments for biohazard control and scale/corrosion control
Hybrid Cooling	Lower water use than conventional wet cooling systems Can achieve no visible plume	Possible noise impacts Higher energy consumption than conventional wet cooling systems
Fin-fan coolers	No aqueous discharge Lower visual impact No water consumption	Possible noise impacts Higher energy consumption

6.7.3 The T2FGF is located close to the River Thames, which could potentially provide a source of water for water cooling systems. This would require a new water abstraction licence. In addition, as the gas engines would not operate continuously, settlement and siltation within a once through cooling system could cause operational problems, leading to blockages in the condenser/heat exchanger. This would result in increased maintenance costs and reduced cooling efficiency and could potentially affect reliability of the system. Furthermore, pumping water over a kilometre from the river would entail an energy cost and impact on energy efficiency of this option.

6.7.4 A further result of the hours of operation could be problems surrounding biological control (for example for legionella) and issues of fouling, which would result in additional costs and issues for maintenance.

¹⁸ https://eippcb.jrc.ec.europa.eu/sites/default/files/2019-11/cvs_bref_1201.pdf

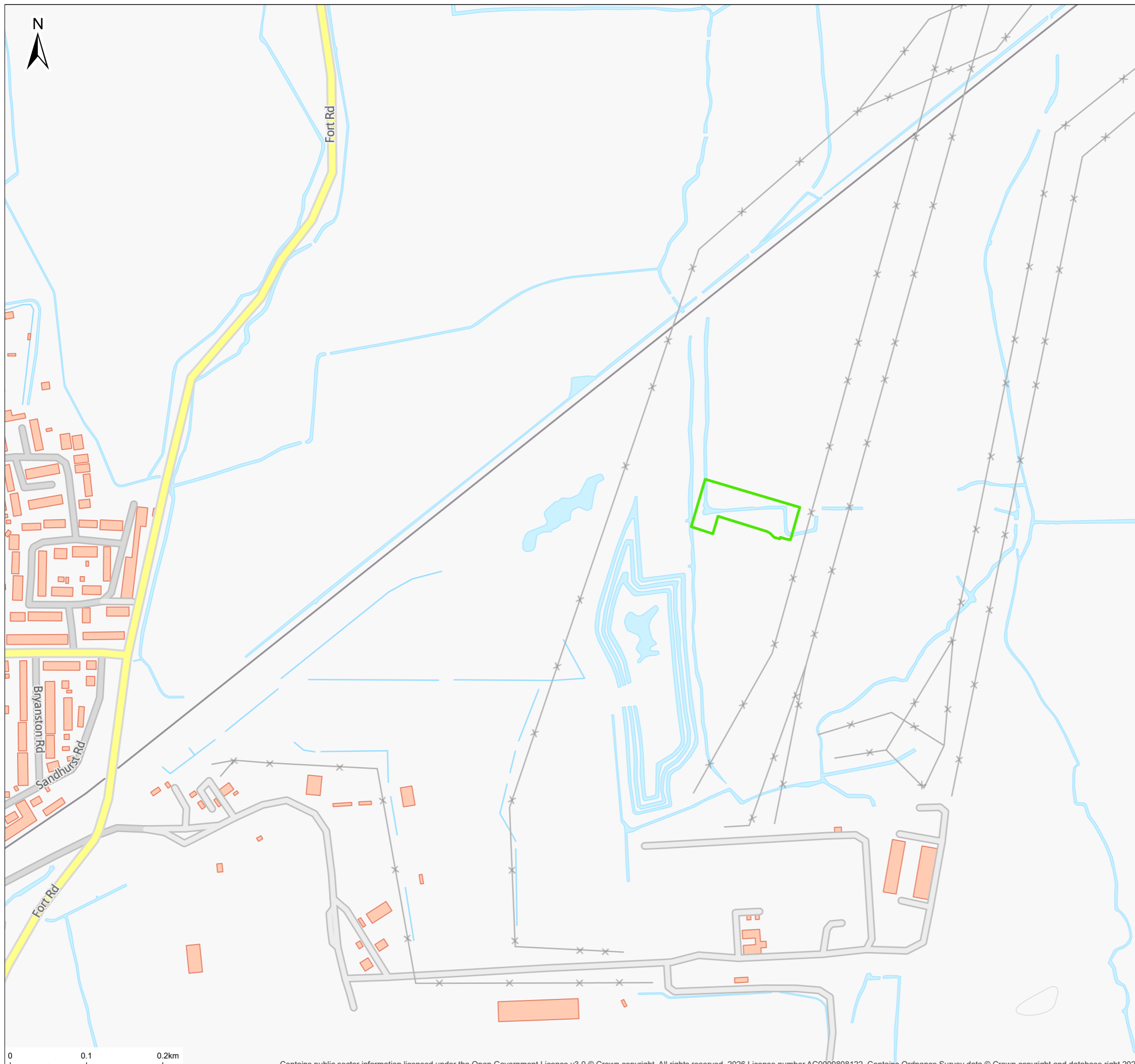
- 6.7.5 A new evaporative cooling tower system would experience similar problems, with biological control issues and corrosion or scale formation becoming a risk as a result of the plants operating hours. These issues would likewise result in higher maintenance costs. In addition, the control regime may require re-circulation at times when the plant is not operating. This would result in an energy penalty.
- 6.7.6 Evaporative cooling can have good energy performance, and those without mechanical draught systems have lower noise effects. However, water usage, chemical dosing and discharges are the highest of the cooling options available.
- 6.7.7 Hybrid systems are available and while they have lower energy consumption than a fin-fan cooling option, they do not achieve the significant energy efficiency benefits that once-through cooling offers. Noise effects from hybrid systems are similar to fin-fan coolers but they introduce additional environmental effects associated with water consumption, use of treatment chemicals and from associated aqueous discharges.
- 6.7.8 As a result of the above considerations, it has been concluded that water cooling systems would not be technically feasible or practicable at the Thurrock T2FGF and these methods have been discounted from further evaluation.
- 6.7.9 Fin-fan coolers have no significant water consumption. Hence, they are suited to the site location and operational profile and will not result in additional effluent discharges. Furthermore, they have a lower visual impact when compared with evaporative techniques together with lower associated storage requirements.
- 6.7.10 Whilst fin fan coolers can give rise to greater noise impacts, the noise assessment carried out has concluded that the noise effects from the site will not result in significant noise impacts to health or amenity, with appropriate mitigation methods in place.
- 6.7.11 It is recognised that the fin-fan cooler option has a higher energy demand than other cooling options. However, the energy consumption by the fin-fan coolers will not have a material impact on the overall energy efficiency for the project.
- 6.7.12 On the basis of the above, fin-fan coolers within a CCCW system are considered BAT for providing cooling to the gas engines at this site.

References

1. Medium Combustion Plant Directive (MCPD): Directive - 2015/2193 - EN - EUR-Lex (europa.eu)
2. MCPD Implementing decision - 2021/2326 - EN - EUR-Lex (europa.eu)
3. SI 2001/2954. The Control of Pollution (Oil Storage) (England) Regulations 2001
4. Environment Agency (2017), Technical Guidance Note (Monitoring) M1, Sampling requirements for stack emission monitoring, version 8, August 2017
5. CHP Ready Guidance for Combustion and Energy from Waste Power Plants
6. Directive (EU) 2023/1791 of the European Parliament and of the Council of 13 September 2023 on energy efficiency
7. Environment Agency (2017), Technical Guidance Note (Monitoring) M2, Monitoring of stack emissions to air, version 12, August 2017
8. Monitoring stack emissions: measurement locations - GOV.UK (www.gov.uk)
9. MCPD Annex 2 <https://eur-lex.europa.eu/legalcontent/EN/TXT/?uri=CELEX:32015L2193#d1e32-15-1>
10. Environment Agency (2016), Screening for protected conservation areas. Available at: <https://www.gov.uk/guidance/air-emissions-risk-assessment-for-your-environmentalpermit#screening-for-protected-conservation-areas>
11. Commission Implementing Decision (EU) 2021/2326 of 30 November 2021 establishing best available techniques (BAT) conclusions, under Directive 2010/75/EU of the European Parliament and of the Council for large combustion plants. (Publications Office (europa.eu))
12. EU BREF for Industrial Cooling Systems https://eippcb.jrc.ec.europa.eu/sites/default/files/2019-11/cvs_bref_1201.pdf

Appendices


Appendix A Application Forms

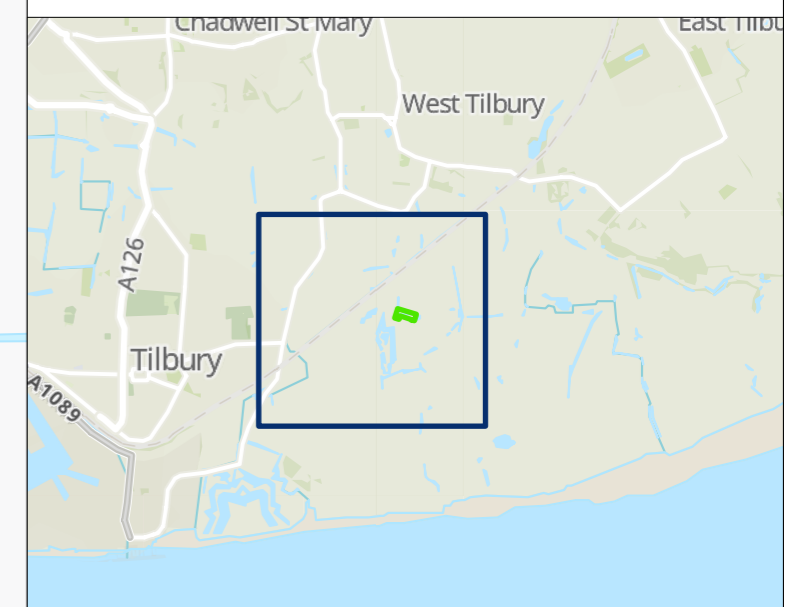


© 2026 RPS Group
 101 Park Drive, Milton Park, Abingdon, Oxfordshire, OX14 4RY
 T: +44(0)1235 821 888 E: rps.ox@tetratech.com W: rpsgroup.com

Notes
 1. This drawing has been prepared in accordance with the scope of RPS's appointment with its client and is subject to the terms and conditions of that appointment. RPS accepts no liability for any use of this document other than by its client and only for the purposes for which it was prepared and provided.
 2. If received electronically it is the recipients responsibility to print to correct scale. Only written dimensions should be used.



LEGEND
 Site Boundary



Client **Statera Energy Ltd.**

Project **Thurrock 2**

Project No. **794-ENV-EPC-23409**

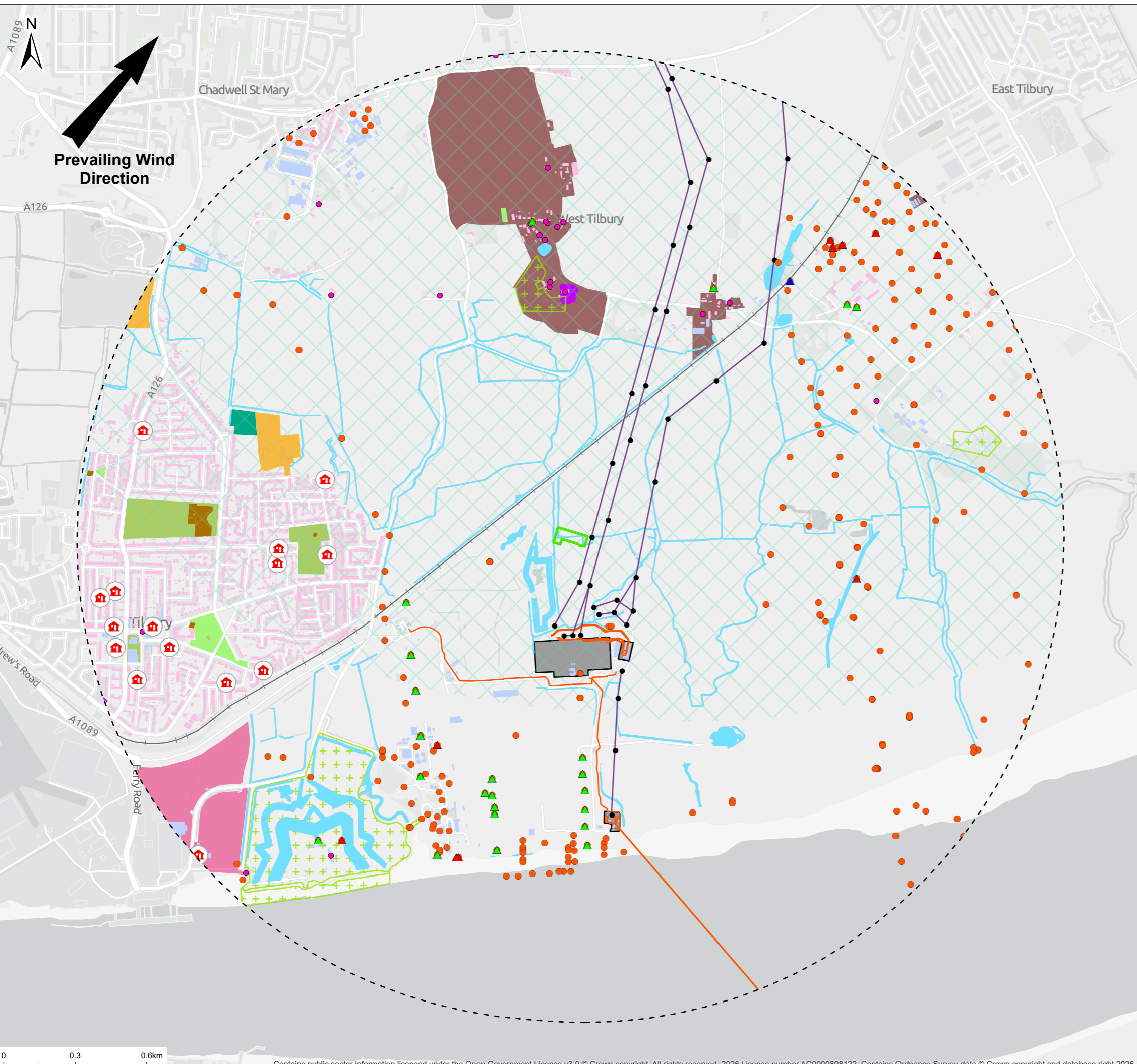
Title **Site Location Plan**

Drawing No. 23409-0001-03	Figure No. 01	Revision 03	Status FINAL
------------------------------	------------------	----------------	-----------------

Date FEB 2026	Drawn By JM	Checked By AK	Revision By XX
------------------	----------------	------------------	-------------------

Scale @ A3 1:5,000	Datum OSGB 1936
-----------------------	--------------------

P:\eur-mpfs-02.eur.rpsgroup.com\Projects_Environmental Compliance Ground Engineering\794-ENV-EPC-23409 - Thurrock 2\Tech\Drawings\23409-0001-03.aprx - A3 - Landscape



© 2026 RPS Group
 101 Park Drive, Milton Park, Abingdon, Oxfordshire, OX14 4RY
 T: +44(0)1235 821 888 E: rps.ox@tetratech.com W: rpsgroup.com

Notes
 1. This drawing has been prepared in accordance with the scope of RPS's appointment with its client and is subject to the terms and conditions of that appointment. RPS accepts no liability for any use of this document other than by its client and only for the purposes for which it was prepared and provided.
 2. If received electronically it is the recipients responsibility to print to correct scale. Only written dimensions should be used.



LEGEND

- Site Boundary
- 2km Buffer
- GP / Dental / Care Centres
- Commercial
- Residential
- Education
- Allotments
- Recreational Facilities
- Play Space
- Public Park Or Garden
- Religious Grounds
- Water Transport
- Railway
- National Grid - Towers
- National Grid - Cable
- National Grid - OHL
- National Grid - Substation
- Listed Building
- Scheduled Monument
- Conservation Area
- ▲ Water well - 0 - 10m
- ▲ Water well - 10 - 30m
- ▲ Water well - 30m+
- Borehole
- Source Protection Zone
- Surface Water



Client **Statera Energy Ltd.**

Project **Thurrock 2**

Project No. **794-ENV-EPC-23409**

Title **Human Sensitive Receptors**

Drawing No. 23409-0002-02	Figure No. 02	Revision 02	Status FINAL
------------------------------	------------------	----------------	-----------------

Date FEB 2026	Drawn By JM	Checked By AK	Revision By XX
------------------	----------------	------------------	-------------------

Scale @ A3 1:16,000	Datum OSGB 1936
------------------------	--------------------

P:\eur-mpfs-02.eur.rpsgroup.com\Projects_Environmental Compliance Ground Engineering\794-ENV-EPC-23409 - Thurrock 2\TechDrawings\23409-0002-02.aprx - A3 - Landscape



Prevailing Wind Direction






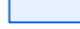









© 2026 RPS Group
101 Park Drive, Milton Park, Abingdon, Oxfordshire, OX14 4RY
T: +44(0)1235 821 888 E: rps.ox@tetrattech.com W: rpsgroup.com



Notes
1. This drawing has been prepared in accordance with the scope of RPS's appointment with its client and is subject to the terms and conditions of that appointment. RPS accepts no liability for any use of this document other than by its client and only for the purposes for which it was prepared and provided.
2. If received electronically it is the recipients responsibility to print to correct scale. Only written dimensions should be used.

LEGEND

-  Site Boundary
-  15km Buffer
-  Site of Special Scientific Interest
-  Source Protection Zone
-  Nitrate Vulnerable Zone
-  Drinking Water Safeguard Zones - Groundwater
-  National Nature Reserve
-  Ramsar
-  Special Protection Area
-  Special Area of Conservation
-  Surface Water
-  Ancient Woodland
-  Local Nature Reserve

The site falls within a Medium-High risk and Soluble Rock Risk category area for Groundwater Vulnerability



Client **Statera Energy Ltd.**

Project **Thurrock 2**

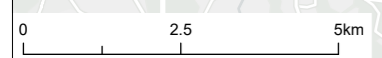
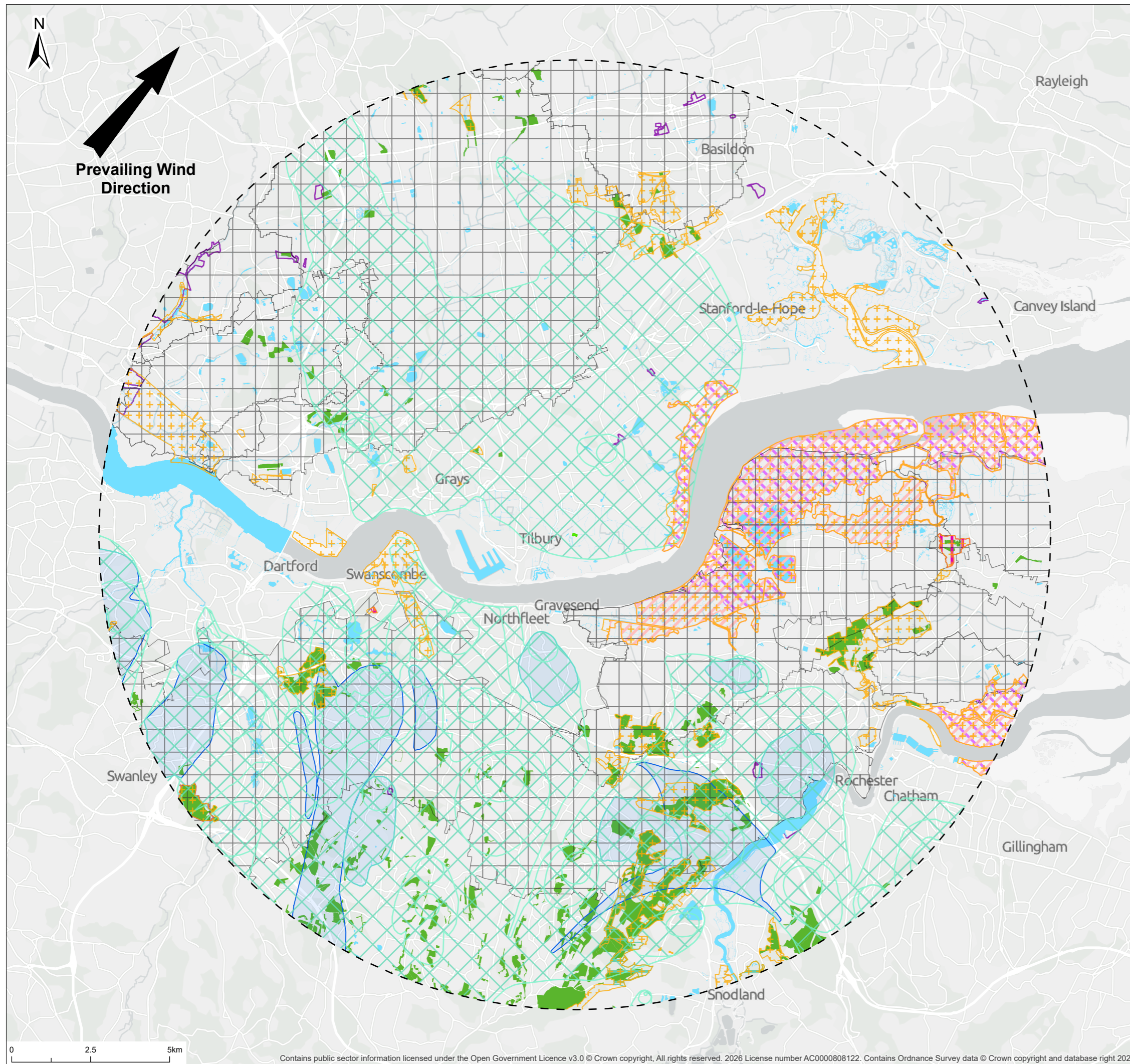
Project No. **794-ENV-EPC-23409**

Title **Ecological Sensitive Receptors**

Drawing No. 23409-0003-02	Figure No. 03	Revision 01	Status FINAL
------------------------------	------------------	----------------	-----------------

Date FEB 2026	Drawn By JM	Checked By AK	Revision By XX
------------------	----------------	------------------	-------------------

Scale @ A3 1:120,000	Datum OSGB 1936
-------------------------	--------------------





© 2026 RPS Group
 101 Park Drive, Milton Park, Abingdon, Oxfordshire, OX14 4RY
 T: +44(0)1235 821 888 E: rps.ox@tetratech.com W: rpsgroup.com

Notes
 1. This drawing has been prepared in accordance with the scope of RPS's appointment with its client and is subject to the terms and conditions of that appointment. RPS accepts no liability for any use of this document other than by its client and only for the purposes for which it was prepared and provided.
 2. If received electronically it is the recipients responsibility to print to correct scale. Only written dimensions should be used.



LEGEND

- Site Boundary
- Attenuation swale / pond connecting into redirected ditch
- Emission Point**
- Air
- Water



Client	Statera Energy Ltd.		
Project	Thurrock 2		
Project No.	794-ENV-EPC-23409		
Title	Emission Point Plan		
Drawing No.	Figure No.	Revision	Status
23409-0004-02	01	02	FINAL
Date	Drawn By	Checked By	Revision By
FEB 2026	JM	AK	XX
Scale @ A3		Datum	
1:500		OSGB 1936	

P:\eur-mpfs-02.eur.rpsgroup.com\Projects_Environmental Compliance Ground Engineering\794-ENV-EPC-23409 - Thurrock 2\TechDrawings\23409-0004-02.aprx - A3 - Landscape

0 0.01 0.02km



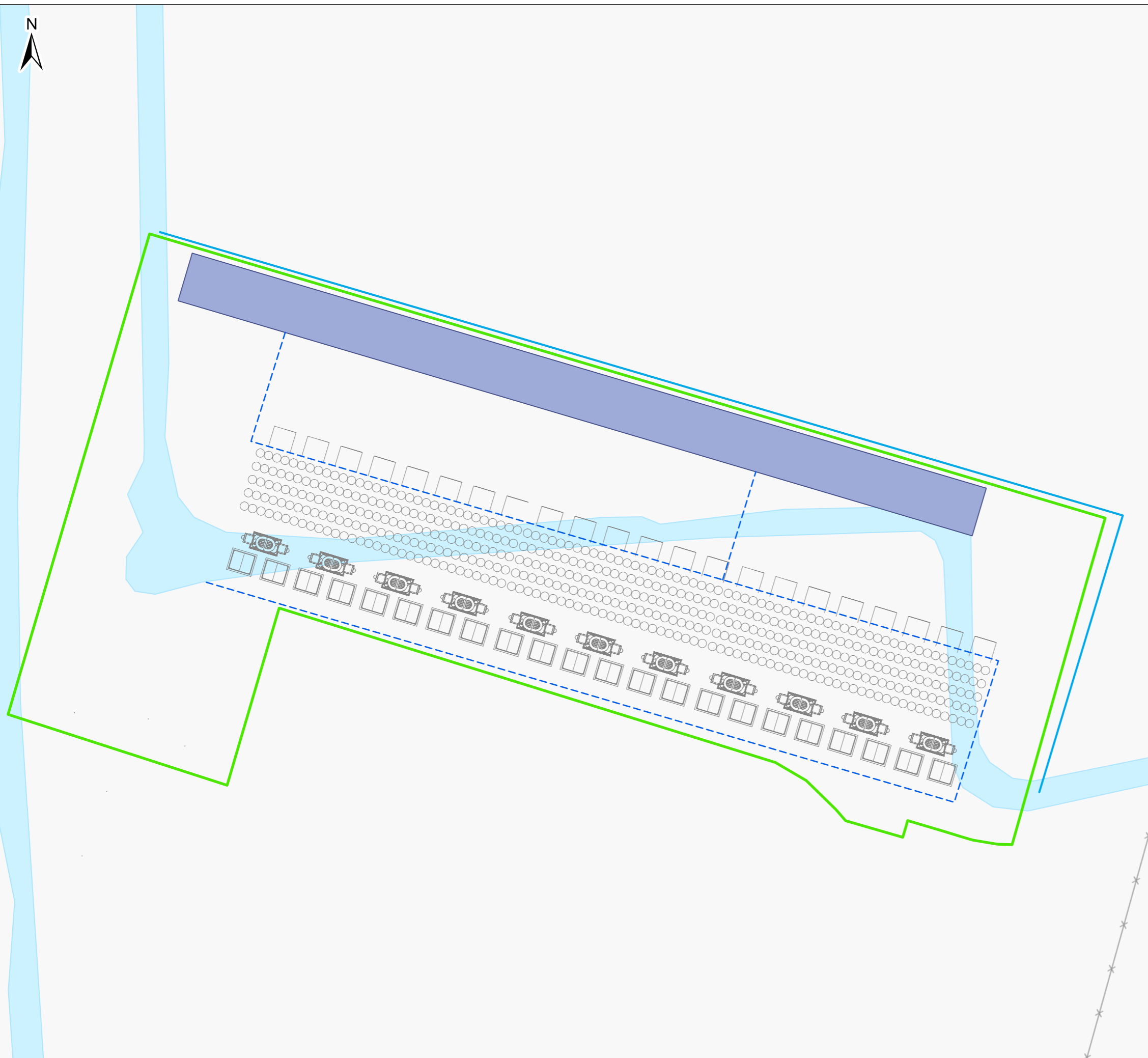
© 2026 RPS Group
 101 Park Drive, Milton Park, Abingdon, Oxfordshire, OX14 4RY
 T: +44(0)1235 821 888 E: rps.ox@tetratech.com W: rpsgroup.com

Notes
 1. This drawing has been prepared in accordance with the scope of RPS's appointment with its client and is subject to the terms and conditions of that appointment. RPS accepts no liability for any use of this document other than by its client and only for the purposes for which it was prepared and provided.
 2. If received electronically it is the recipients responsibility to print to correct scale. Only written dimensions should be used.



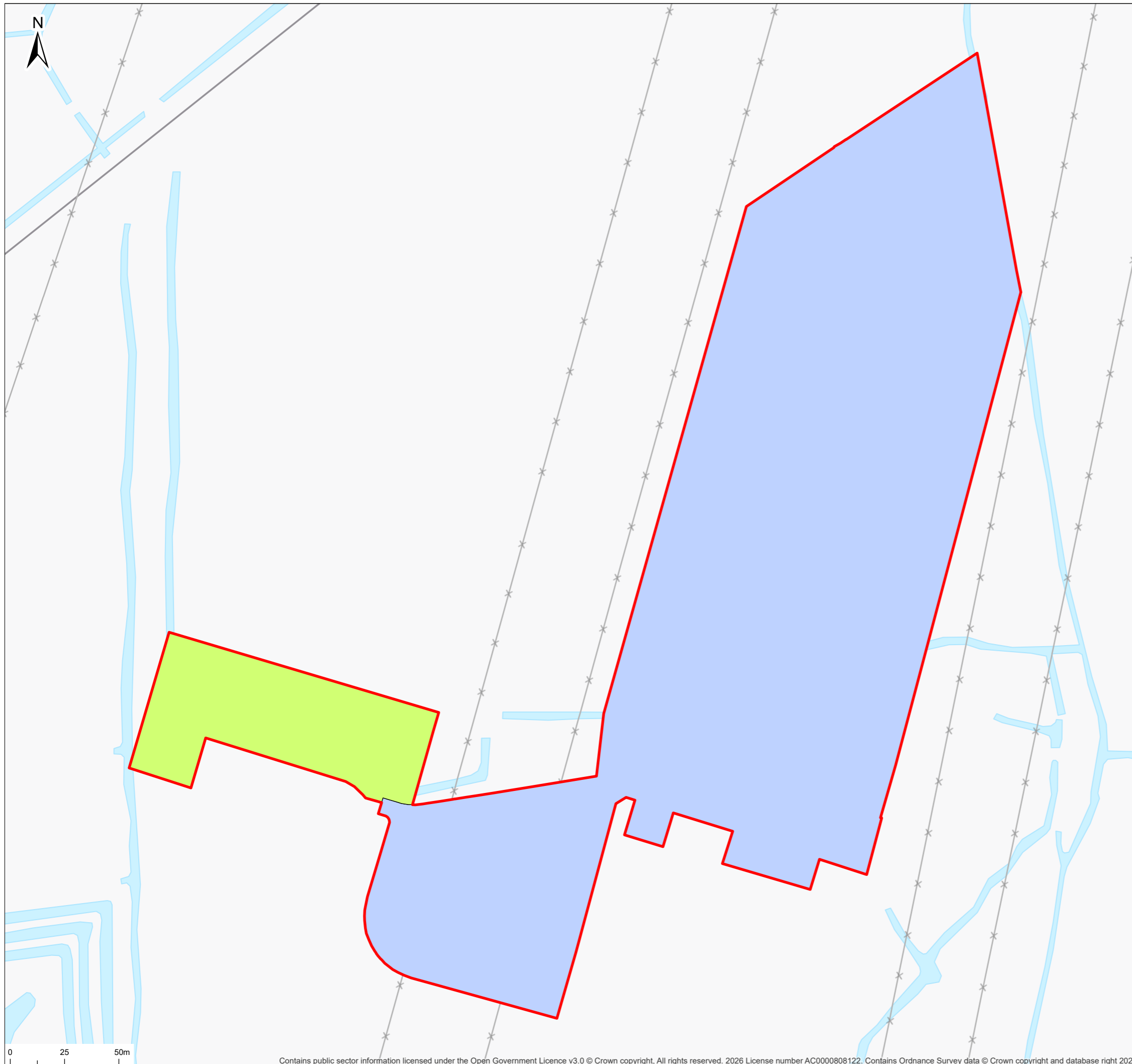
LEGEND

- Site Boundary
- Drain
- Redirected ditch
- Attenuation swale / pond connecting into redirected ditch



Client	Statera Energy Ltd.		
Project	Thurrock 2		
Project No.	794-ENV-EPC-23409		
Title	Surface Water Drainage Plan		
Drawing No.	Figure No.	Revision	Status
23409-0005-03	-	02	FINAL
Date	Drawn By	Checked By	Revision By
FEB 2026	JM	AK	XX
Scale @ A3		Datum	
1:500		OSGB 1936	

P:\eur-mpfs-02.eur.rpsgroup.com\Projects_Environmental Compliance Ground Engineering\794-ENV-EPC-23409 - Thurrock 2\TechDrawings\23409-0005-03.aprx - A3 - Landscape



© 2026 RPS Group
 101 Park Drive, Milton Park, Abingdon, Oxfordshire, OX14 4RY
 T: +44(0)1235 821 888 E: rps.ox@tetratech.com W: rpsgroup.com

Notes
 1. This drawing has been prepared in accordance with the scope of RPS's appointment with its client and is subject to the terms and conditions of that appointment. RPS accepts no liability for any use of this document other than by its client and only for the purposes for which it was prepared and provided.
 2. If received electronically it is the recipient's responsibility to print to correct scale. Only written dimensions should be used.



- LEGEND**
- Multi-Operator Installation Boundary
 - Thurrock 1 Site Boundary
 - Thurrock 2 Site Boundary



Client	Statera Energy Ltd.		
Project	Thurrock 2		
Project No.	794-ENV-EPC-23409		
Title	Thurrock 1 and 2 Site Boundaries		
Drawing No.	Figure No.	Revision	Status
23409-0006-02	-	01	FINAL
Date	Drawn By	Checked By	Revision By
FEB 2026	JM	AK	XX
Scale @ A3 1:1,749		Datum OSGB 1936	

P:\eur-mpfs-02.eur.rpsgroup.com\Projects_Environmental Compliance Ground Engineering\794-ENV-EPC-23409 - Thurrock 2\TechDrawings\23409-0006-02.aprx - A3 - Landscape

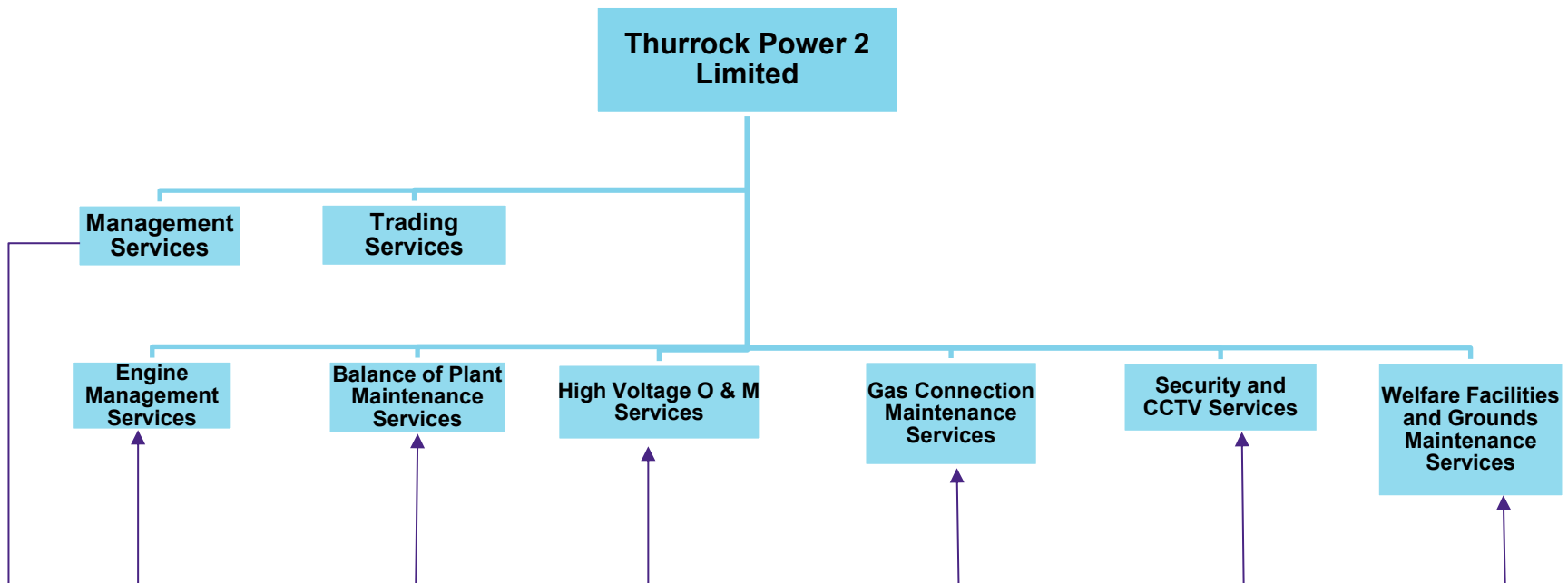
Appendix C Environmental Risk Assessment

Appendix D SCR and Baseline

Appendix E Air Quality Impact Assessment

Appendix F Noise Impact Assessment

Appendix G Site Organogram



Appendix H Pre-Application Discussions

Nature and Heritage Conservation

Screening Report: Large emitter (greater than 50MW)

Reference	EPR/MP3529MF/P001
NGR	TQ 66156 76668
Buffer (m)	60
Date report produced	29/01/26
Number of maps enclosed	1

This nature and heritage conservation report

The nature and heritage conservation sites, protected species and habitats, and other features identified in the table below **must be considered in your application**.

In the further information column, there are links which give more information about the site or feature type and indicate where you are able to self-serve to get the most accurate site boundaries or feature locations.

Most designated site boundaries are available on [Magic map](#). Using Magic map allows you to zoom in and see the site boundary or feature location in detail, Magic map also allows you to measure the distance from these sites and features to your proposed boundary. [Help videos](#) are available on Magic map to guide you through.

Where information is not publicly available, or is only available to those with GIS access, we have provided a map at the end of this report.

Sites and Features within screening distance

Screening distance (km) Further Information

Special Areas of Conservation (cSAC or SAC)

15

[Joint Nature Conservation Committee](#) and [Magic map](#)

North Downs Woodlands

Peters Pit

Special Protection Area (pSPA or SPA)	15	Joint Nature Conservation Committee and Magic map
Thames Estuary & Marshes		
Ramsar	15	Joint Nature Conservation Committee and Magic map
Thames Estuary & Marshes		
Medway Estuary & Marshes		
Local Wildlife Sites (LWS) (see map below)	2	Appropriate Local Record Centre (LRC)
Tilbury Power Station		
West Tilbury Hall		
West Tilbury Church		
Tilbury Marshes		
Low Street Pit		
Broom Hill		
Hob Hill & Sandy Lane Pit, Chadwell St Mary		
Flood Risk Zone 3	Within zone	Flood zone 3

The relevant Local Records Centre must be contacted for information on the features within local wildlife sites. A small administration charge may also be incurred for this service.

The following nature and heritage conservation sites, protected species and habitats, and other features have been checked for, where they are relevant for the permit type requested, but have not been found within screening distance of your site unless included in the list above.

Special Areas of Conservation (cSAC or SAC), Special Protection Area (pSPA or SPA), Marine Conservation Zone (MCZ), Ramsar, Sites of Special Scientific Interest (SSSI), National Nature Reserve (NNR), Local Nature Reserve (LNR), Local Wildlife Sites (LWS), Ancient Woodland, Flood Risk Zone.


Please note we have screened this application for features for which we have information. It is however your responsibility to comply with all environmental and

planning legislation, this information does not imply that no other checks or permissions will be required.

The nature and heritage screening we have conducted as part of this report is subject to change as it is based on data we hold at the time it is generated. We cannot guarantee there will be no changes to our screening data between the date of this report and the submission of the permit application, which could result in the return of an application or requesting further information.

Local Wildlife Sites

Local Wildlife Sites


 Local Wildlife Sites

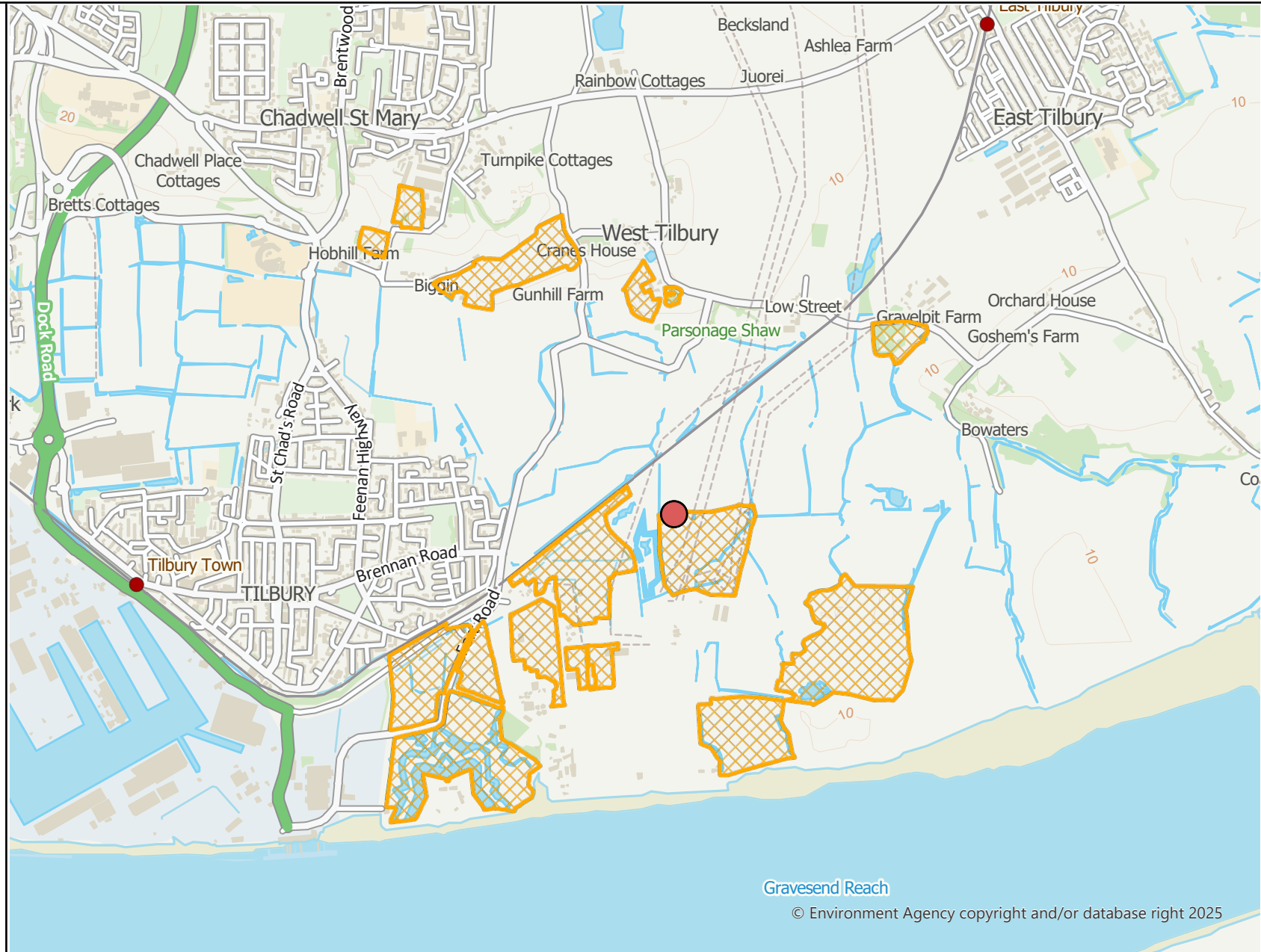
Markup

 Override 1

 Override 2

 Override 1

 Override 1



Gravesend Reach

© Environment Agency copyright and/or database right 2025

Scale: 1:26,594

