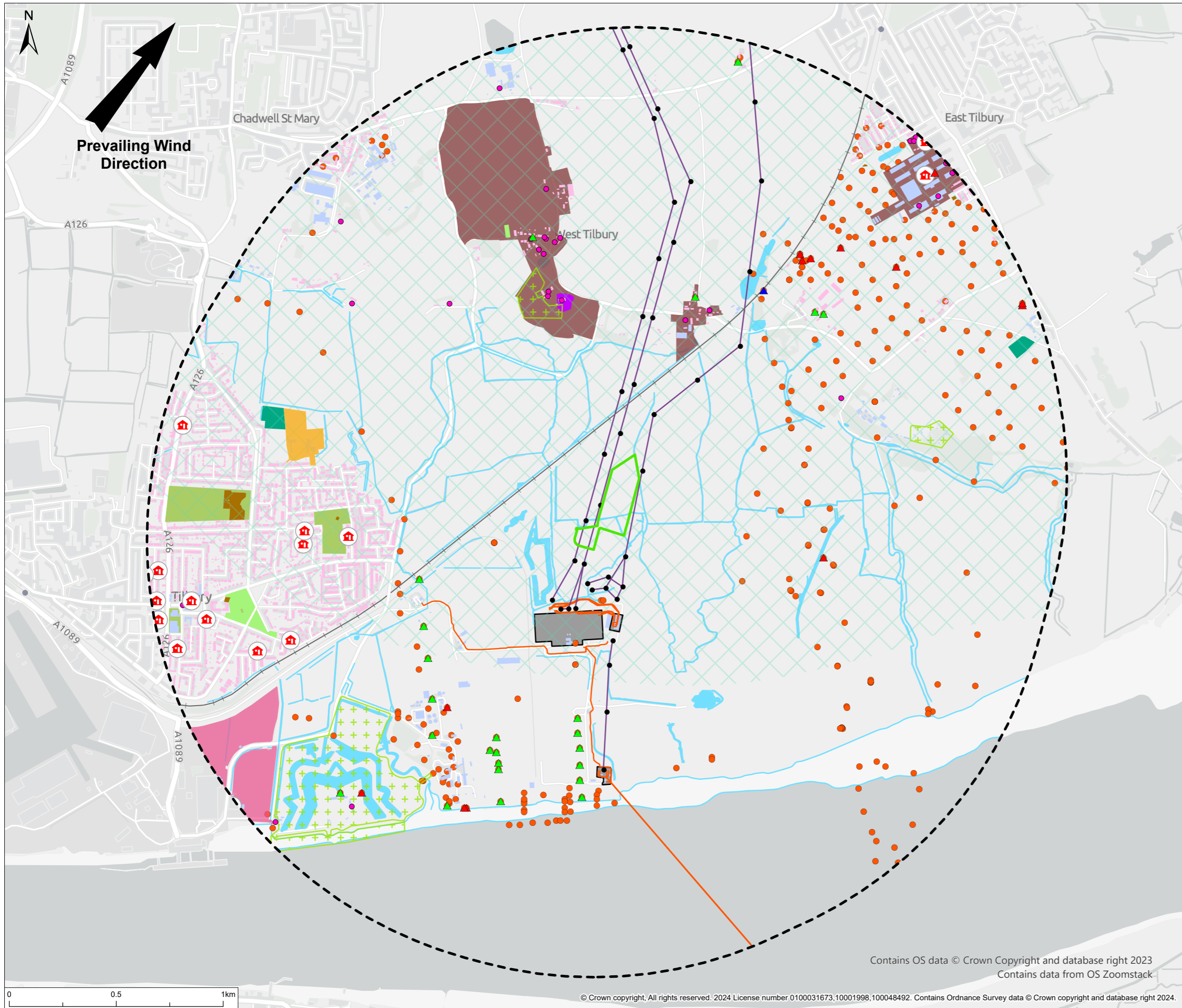


P:\eur-mpfs-02_eur.rpsgroup.com\Projects_Environmental Compliance Ground Engineering\794-ENV-EPC-20502 - Thurrock Peaking Plant\TechDrawings\ENV-EPC-20502-04-03.aprx - Layout A



© 2024 RPS Group
 Notes
 1. This drawing has been prepared in accordance with the scope of RPS's appointment with its client and is subject to the terms and conditions of that appointment. RPS accepts no liability for any use of this document other than by its client and only for the purposes for which it was prepared and provided.
 2. If received electronically it is the recipients responsibility to print to correct scale. Only written dimensions should be used.

- Legend**
- Site Boundary
 - 2km Buffer
 - GP / Dental / Care Centres
 - Railway
 - Commercial
 - Residential
 - Allotments
 - Recreational Facilities
 - Play Space
 - Public Park Or Garden
 - Religious Grounds
 - Water Transport
 - Source Protection Zone
 - National Grid - Towers
 - National Grid - OHL
 - National Grid - Cable
 - National Grid - Substation
 - Listed Building
 - Conservation Area
 - Scheduled Monument
 - Surface Water and Waterlines
 - ▲ Water well - 0 - 10m
 - ▲ Water well - 10 - 30m
 - ▲ Water well - 30m+
 - Borehole

The area falls within a Medium-High risk and Soluble Rock Risk category area for Groundwater Vulnerability

Rev	Description	By	CB	Date

rps

A TETRA TECH COMPANY

20 Western Avenue, Milton Park, Abingdon, Oxfordshire, OX14 4SH
 T: +44(0)1235 821 888 E: rps@rpsgroup.com

Client -

Project **Thurrock Peaking Plant**

Title **Sensitive Receptors Plan**

Status	Drawn By	PM/Checked By
FINAL	JM	RN
Project Number	Scale @ A3	Date Created
794-ENV-EPC-20502	1:17,000	AUG 2024
Figure Number	Rev	
1	-	

Contains OS data © Crown Copyright and database right 2023
 Contains data from OS Zoomstack

