

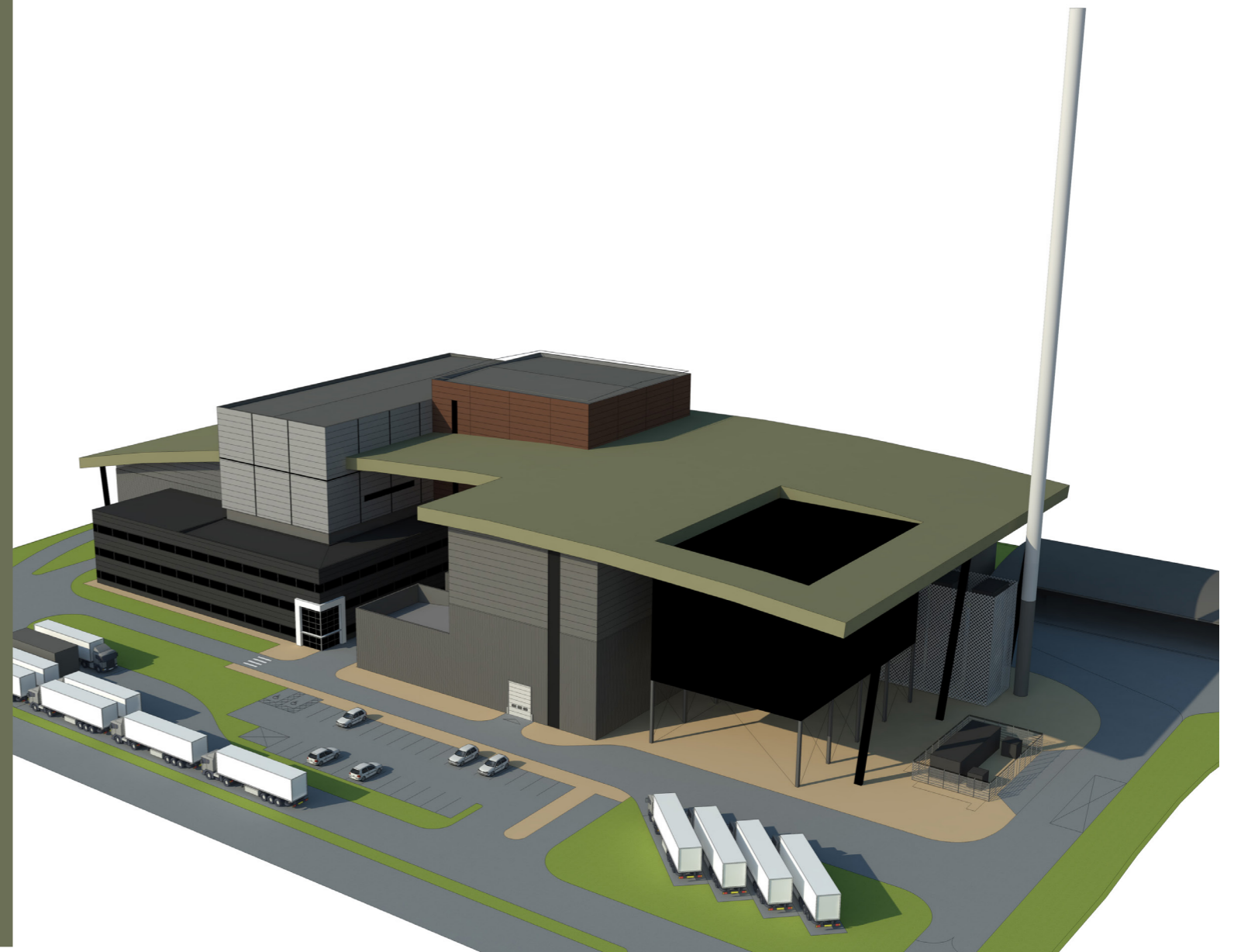
RPS

**BRITANIAGREST**  
SUSTAINABLE GREEN SOLUTIONS

# Wealden Recycling, Recovery and Renewable Energy Facility: Environmental Statement Volume 2: Figures

March 2018

On behalf of Britaniacrest Recycling Ltd



# Wealden Recycling, Recovery and Renewable Energy Facility: Environmental Statement

Volume 2: Figures

March 2018

On behalf of Britaniacrest Recycling Ltd

Our Ref: OXF9198

**RPS**  
20 Western Avenue  
Abingdon  
Oxon  
OX14 4SH



## Contents

---

### Volume 2: Figures

Figure 1.1	Site Location Plan	Figure 5.25	Viewpoint 17 Existing and Proposed View
Figure 1.2	Existing Site Plan	Figure 5.26	Viewpoint 18 Existing and Proposed View
Figure 2.1	Proposed Site Plan	Figure 5.27	Viewpoint 19 Existing and Proposed View
Figure 2.2	Areas Plan	Figure 5.28	Viewpoint 20 Existing and Proposed View
Figure 3.1	Alternative Design Options	Figure 5.29	Viewpoint 21 Existing and Proposed View
Figure 5.1	Landscape Site Context Plan	Figure 5.30	Viewpoint 22 Existing and Proposed View
Figure 5.2	National Character Areas	Figure 5.31	Viewpoint 23 Existing and Proposed View
Figure 5.3	West Sussex and Surrey Landscape Character Areas	Figure 5.32	Viewpoint 24 Existing and Proposed View
Figure 5.4	District Landscape Character	Figure 5.33	Viewpoint 25 Existing and Proposed View
Figure 5.5	Landscape Designations	Figure 5.34	Viewpoint 26 Existing and Proposed View
Figure 5.6	Landscape Capacity of Local Landscape Character Areas	Figure 5.35	Viewpoint 27 Existing and Proposed View
Figure 5.7	Zone of Theoretical Visibility	Figure 5.36	Viewpoint 28 Existing and Proposed View
Figure 5.8	Viewpoint Location Plan	Figure 5.37	Viewpoint 29 Existing and Proposed View
Figure 5.9	Viewpoint 1 Existing and Proposed View	Figure 5.38	Illustrative Landscape Proposals
Figure 5.10	Viewpoint 2 Existing and Proposed View	Figure 5.39	CPRE Tranquillity Mapping and Gatwick Airport Flight Tracks
Figure 5.11	Viewpoint 3 Existing and Proposed View	Figure 6.1	Heavy Goods Vehicle Routes
Figure 5.12	Viewpoint 4 Existing and Proposed View	Figure 7.1	Wind Roses for Charlwood 2011 to 2015
Figure 5.13	Viewpoint 5 Existing and Proposed View	Figure 7.2	Site Location and Receptors Modelled
Figure 5.14	Viewpoint 6 Existing and Proposed View	Figure 7.3	99.79 <sup>th</sup> Percentile of Hourly-mean NO <sub>2</sub> Process Contributions (µg.m <sup>-3</sup> ) – Long-term IED Limits
Figure 5.15	Viewpoint 7 Existing and Proposed View	Figure 7.4	Annual-mean NO <sub>2</sub> Process Contributions (µg.m <sup>-3</sup> ) – Long-term IED Limits
Figure 5.16	Viewpoint 8 Existing and Proposed View	Figure 8.1	Noise Sensitive Receptors
Figure 5.17	Viewpoint 9 Existing and Proposed View	Figure 8.2	Operational Noise Model Plant Layout
Figure 5.18	Viewpoint 10 Existing and Proposed View	Figure 8.3	Baseline Survey Locations
Figure 5.19	Viewpoint 11 Existing and Proposed View	Figure 8.4	Daytime (07:00 to 19:00) Noise Contour at 1.5 m
Figure 5.20	Viewpoint 12 Existing and Proposed View	Figure 8.5	Evening (19:00 to 23:00) Noise Contour at 1.5 m
Figure 5.21	Viewpoint 13 Existing and Proposed View	Figure 8.6	Night-time (23:00 to 07:00) Noise Contour at 4 m
Figure 5.22	Viewpoint 14 Existing and Proposed View	Figure 9.1	Heritage Assets Located within 1 km of the Site
Figure 5.23	Viewpoint 15 Existing and Proposed View	Figure 9.2	Designated Assets within 1.5 km
Figure 5.24	Viewpoint 16 Existing and Proposed View	Figure 9.3	Designated Assets between 1.5 km and 3 km
		Figure 9.4	Designated Assets of the Highest Significance between 3 km and 5 km of the Proposal Site

Figure 9.5	Historic Landscape Characterisation
Figure 9.6	Heritage Viewpoints
Figure 9.7	Heritage Viewpoints Existing and Proposed Views (Viewpoints 1-5)
Figure 10.1	Hydrology Study Area
Figure 12.1	Ecological Designated Sites Location Plan
Figure 12.2	Ponds Surveyed for Great Crested Newts
Figure 12.3	Great Crested Newt Survey Results
Figure 12.4	Ecological Enhancements