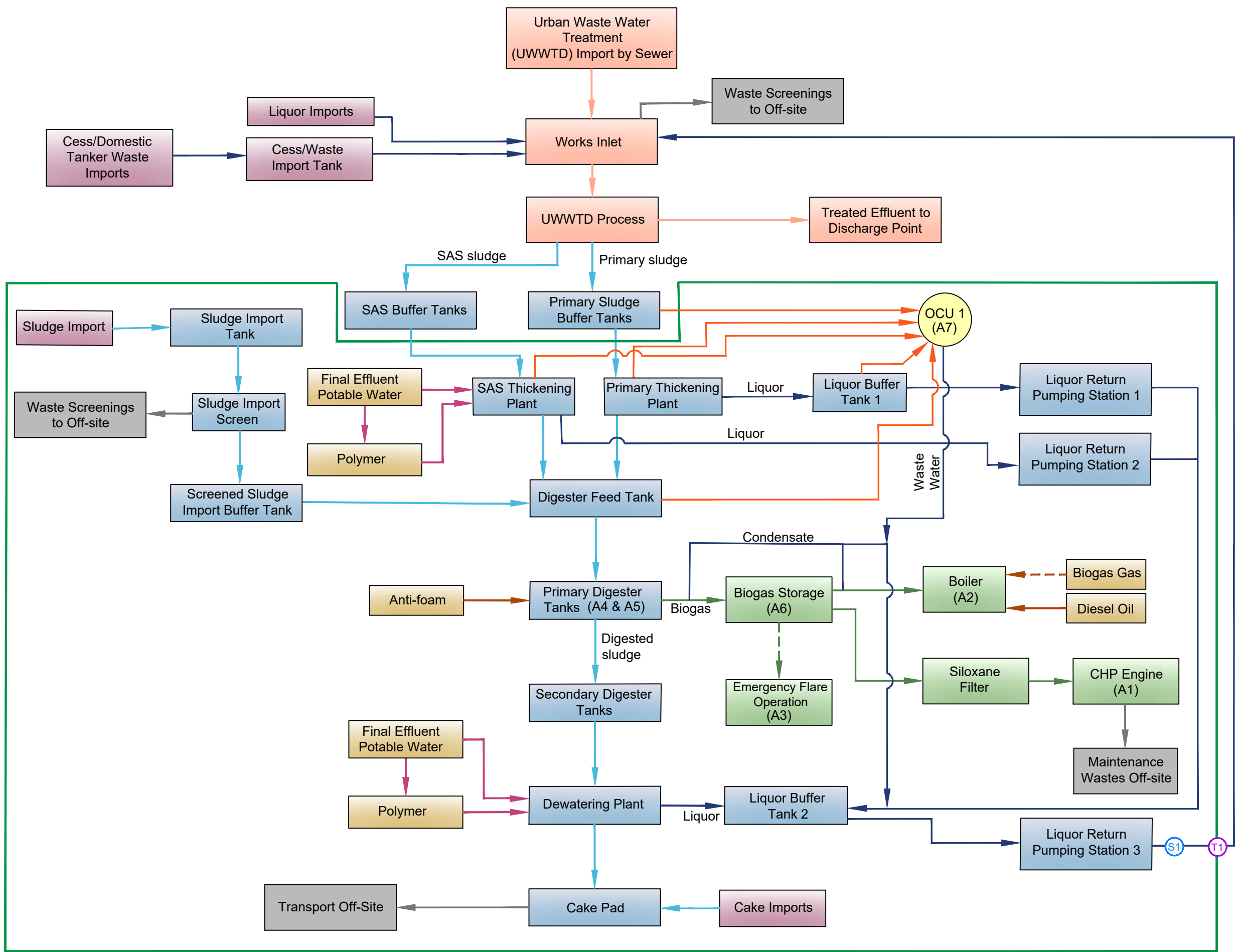


E:\enviros\Design\PROJECTS\KUIB22494\Wargrave\Figures\B22849AZ-JA-WARGS1ZZ-LSX-DR-P-0003-P05.dwg - 08/11/2023 15:17:16 - Layout1 - AL.Roberts



KEY:

- Installation Boundary
- Waste Imports
- Sludge Process
- Biogas Process
- Raw Material Inputs
- UWWTD Process
- Solid Waste Process
- Odour Control Units
- Liquor Flows
- Abnormal Liquor Return
- Sludge Flows
- Sludge Abnormal Flows
- Biogas Flows
- Biogas Abnormal Flows
- Raw Material Flows
- Raw Material Abnormal Flows
- Input to OCU
- Dewatering Flows
- UWWTD Process Flows
- Solid Waste Flows
- T1 Transfer Points
- S1 Sampling Points

Rev	Rev. Date	Purpose of revision	Drawn	Checked	Rev'd	Apprv'd
P05	DEC 2023	FOR INFORMATION	AR	CS	JK	MM
P04	NOV 2023	FOR INFORMATION	AR	CS	JK	MM
P03	OCT 2023	FOR INFORMATION	LC	MM	JK	MM
P02	NOV 2022	POWER POINT - FOR INFORMATION	AR	MM	JK	MM

1180 Eakdale Road, Warrinerh, Wokingham, RG41 5TU
Tel: +44(0)118 946 7000
www.jacobs.com

Client:

Project: **STC IED PERMIT WARGRAVE STW**

Drawing title: **PROCESS FLOW DIAGRAM**

Drawing status: **PERMITTING**

Scale	NOT TO SCALE	DO NOT SCALE
Jacobs No.	B22849AZ	Rev
Client no.		P05

Drawing number: **B22849AZ-JA-WARGS1ZZ-LSX-DR-P-0003**

© Copyright 2020 Jacobs U.K. Limited. The concepts and information contained in this document are the property of Jacobs. Use or copying of this document in whole or in part without the written permission of Jacobs constitutes an infringement of copyright. Limitation: This drawing has been prepared on behalf of, and for the exclusive use of Jacobs Client, and is subject to, and issued in accordance with, the provisions of the contract between Jacobs and the Client. Jacobs accepts no liability or responsibility whatsoever for or in respect of any use of, or reliance upon, this drawing by any third party.