 United Utilities Water for the North West	Wastewater Treatment	Reference: WwP/I/3006/17/18
	Site Specific Instruction (SSI)	Version: 13 Issue date: 18/04/2023 Expiry date: 18/04/2024
	<h2>Digestion and Biogas Emergency Plan</h2> <h3>Blackburn WwTW</h3>	
SSI's are published in UU's Wholesale QA System. If this document is printed please check it is the current version.		





 United Utilities Water for the North West	Wastewater Treatment	Reference: WwP/I/3006/17/18
	Site Specific Instruction (SSI)	Version: 13 Issue date: 18/04/2023 Expiry date: 18/04/2024
	Digestion and Biogas Emergency Plan Blackburn WwTW	
SSI's are published in UU's Wholesale QA System. If this document is printed please check it is the current version.		

Table of Contents

Sect	Sub	Item	Page No.
1.0		Introduction	3
	1.1	Purpose of Document	3
	1.2	Assets in Scope & Potential Hazards	4
2.0		Safety	5
	2.1	Plant Status & Escalation Flow Chart	5
	2.2	Emergency Procedure	6
	2.3	Emergency Responsibilities & Activities by Role	7
	2.4	Site Access & Evacuation Routes	8
	2.5	JESIP Aide Memoires	9
	2.6	Emergency Equipment	11
3.0		Plant Description	13
	3.1	Plant Exclusion Zone	13
	3.2	Emergency Isolation Points	14
	3.3	Fire Hydrant Points	15
	3.4	Site Drainage Plan	15
	3.5	Mobile Phone use	16
	3.6	Purge Plan	16
4.0		Operating Tasks	16
		Not Currently Used	16
5.0		Appendices	17
	5.1	Site Location Details	17
	5.2	Accident and Emergency – Local Hospital Details	18
	5.3	Fire Hydrant Points	19
	5.4	List of Symbols	20
	5.5	Site Drainage Plan	21
	5.6	List of Acronyms	21
	5.7	Reference Information	22
	5.8	Emergency Equipment Weekly Check Sheet	23
	5.9	Example Incident Log	24

 United Utilities Water for the North West	Wastewater Treatment	Reference: WWP/I/3006/17/18
	Site Specific Instruction (SSI)	Version: 13 Issue date: 18/04/2023 Expiry date: 18/04/2024
	Digestion and Biogas Emergency Plan Blackburn WwTW	
SSI's are published in UU's Wholesale QA System. If this document is printed please check it is the current version.		

1.0 Introduction

1.1 Purpose of the Document

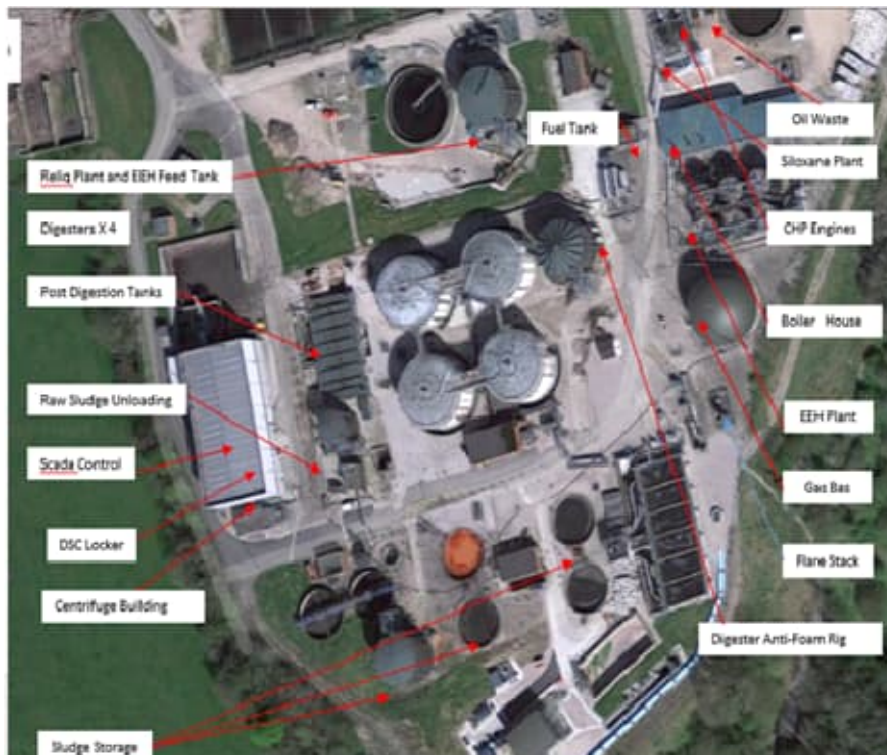
Any operational problem that cannot be dealt with by following normal operational Digester Safety Control (DSC) procedures shall be classed as an **INCIDENT** and the current issue of UUW Operational Incident Management Procedure and WP/S/001/30/01 Incident Response should be applied.


This document details only site specifics relevant to an abnormal condition which has triggered the use of the Emergency Procedure for digester or biogas assets (boiler, flare stacks or CHP units).

All actions and communications carried out while applying this Emergency Procedure, shall be documented as part of a site diary log.

Blackburn WwTw Site Layout


Assembly Point Located on the Visitors Carpark Adjacent to Site Entrance



 United Utilities Water for the North West	Wastewater Treatment	Reference: WwP/I/3006/17/18
	Site Specific Instruction (SSI)	Version: 13 Issue date: 18/04/2023 Expiry date: 18/04/2024
	Digestion and Biogas Emergency Plan Blackburn WwTW	
SSI's are published in UU's Wholesale QA System. If this document is printed please check it is the current version.		

1.2 Assets in Scope

Overview of Main Assets, Capacities & Hazards on Site

	<p>No smoking or other ignition sources</p> <p>At no time is smoking permitted within the DSEAR zoned areas surrounding a digestion plant. Vehicles and any other ignition sources should also be excluded from the area.</p>
---	--












Asset Type ¹	Substance Held	Capacity (m ³)	Commission Date	No. of Units	Location on Site (See Site Layout)	Hazard ² (insert symbol)
Digester	Sludge / Digester gas	2500 m ³	1960	4		
Flare stack	Digester gas	1092 m ³ /hr	2014	1		
Hot Water Boiler	Gas oil / Digester gas	n/a	2014	3		
Gas Storage	Digester gas	3510 m ³	2004	1		
Combined Heat & Power Engine	Oil / Digester gas		2006	2		
Supplementary Fuels	Gas Oil	32,000 l	2005	1		
Engine Oil	Lube oil	3 m ³	2006	1		
Waste Oil	Lube oil	3 m ³	2006	1		
Covered Sludge Tanks (Digested Sludge)	(Digested Sludge)	900 m ³ 1200 m ³	2012	2 1		
Sludge Tanks	Raw Sludge)	1800m ³ 500m ³ 1400m ³	2005	1 4 1		
Carbon/Biogas Clean-up	Activated Carbon	2 x 2m ³	2016	1		

Table 1: Main Assets, Capacities & Hazard

Digestion and Biogas Emergency Plan Blackburn WwTW

SSI's are published in UU's Wholesale QA System. If this document is printed please check it is the current version.

2.0 Safety

2.1 Plant Status Identification & Escalation

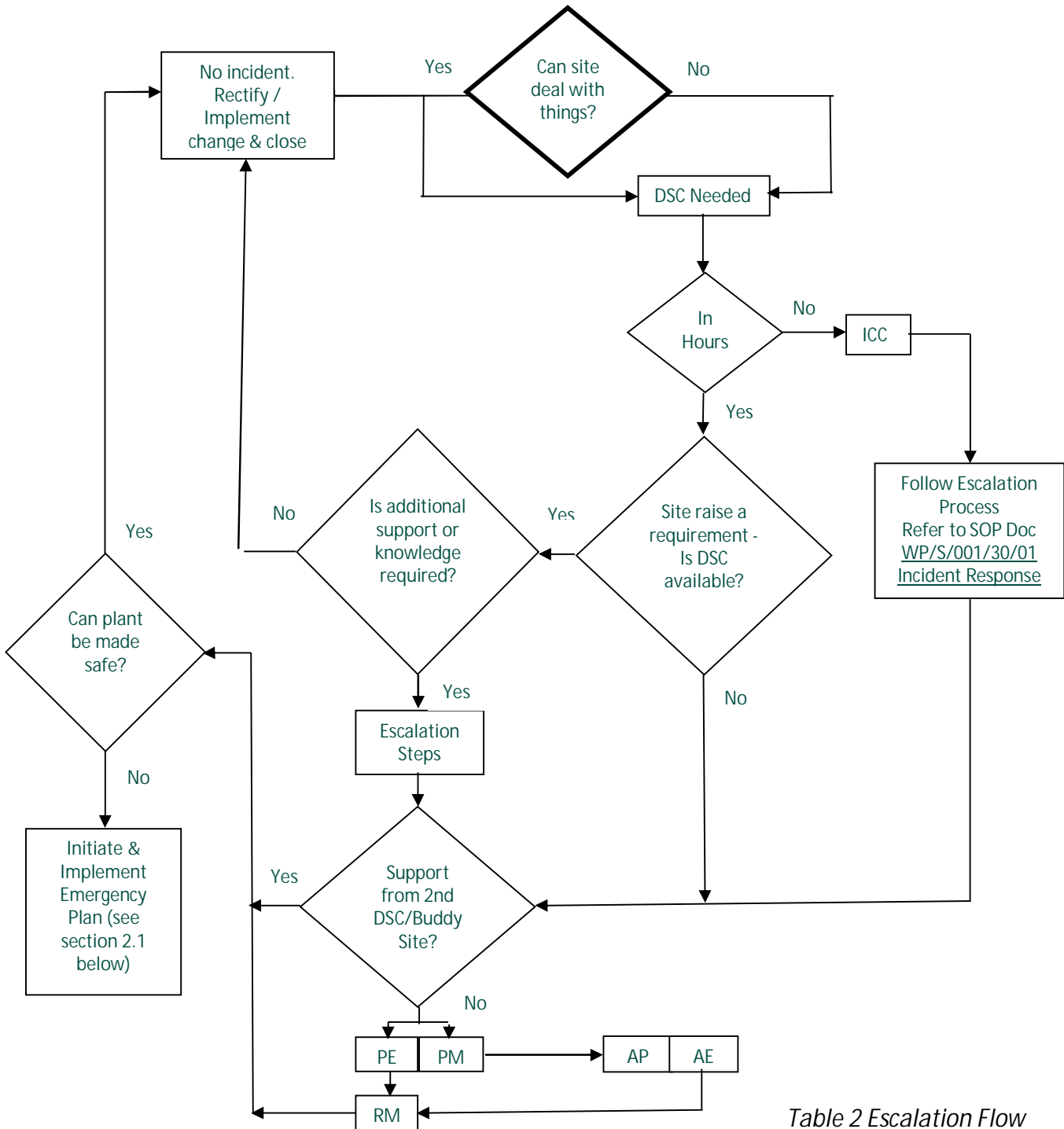



Table 2 Escalation Flow

 United Utilities Water for the North West	Wastewater Treatment	Reference: WwP/I/3006/17/18
	Site Specific Instruction (SSI)	Version: 13 Issue date: 18/04/2023 Expiry date: 18/04/2024
	Digestion and Biogas Emergency Plan Blackburn WwTW	
SSI's are published in UU's Wholesale QA System. If this document is printed please check it is the current version.		

2.2 Emergency Procedure


THIS PROCEDURE IS INITIATED BY THE FORWARD INCIDENT CONTROLLER (F.I.C.)

In the case of an emergency developing on site, the air horn (or another agreed on site alarm) must be used by the DSC or their representative as nominated and indicated below, to signal the need to initiate the emergency procedure. This must be sounded across site to ensure all personnel are aware of the emergency procedure initiation.

2.2.1 Procedure for General Site Personnel and Visitors in the Event of a Digestion Plant Emergency³

The approximate number of people on site during normal working hours is 15. These people will normally comprise of Site Ops staff Waste and FSE's located Main office/FSE building There are also 30 Contract staff in AMS Main Offices + Contract builders on site (changes daily - up to 100).

1. On hearing the on-site siren (continuous tone) proceed to the Assembly Point as notified in the induction procedure (Main Carpark)
2. All UU Personnel on site (other than those dealing with the incident) escort any visitors you are associated with to the relevant assembly point
3. The Site Incident Officer (or their nominee) will supervise a site roll call using the Site Entry Log
4. Remain at the Assembly Point and await further instruction from the Site Incident Officer
5. If advised to leave the site by car, do so by the route shown in route map (see Appendix 2.4 below). This route is advised and must be followed in order to avoid conflict with the Emergency Vehicles and access into restricted areas

 United Utilities Water for the North West	Wastewater Treatment	Reference: WwP/I/3006/17/18
	Site Specific Instruction (SSI)	Version: 13 Issue date: 18/04/2023 Expiry date: 18/04/2024
	Digestion and Biogas Emergency Plan Blackburn WwTW	
SSI's are published in UU's Wholesale QA System. If this document is printed please check it is the current version.		


2.3 Emergency Responsibilities & Activities

Once the emergency procedure has been initiated, activities below must be allocated as specific responsibilities to be undertaken during a digester emergency. These activities are not just the responsibility of the DSC (who will most likely be needed on site) and should be delegated amongst all available personnel with the appropriate instruction from the section below:

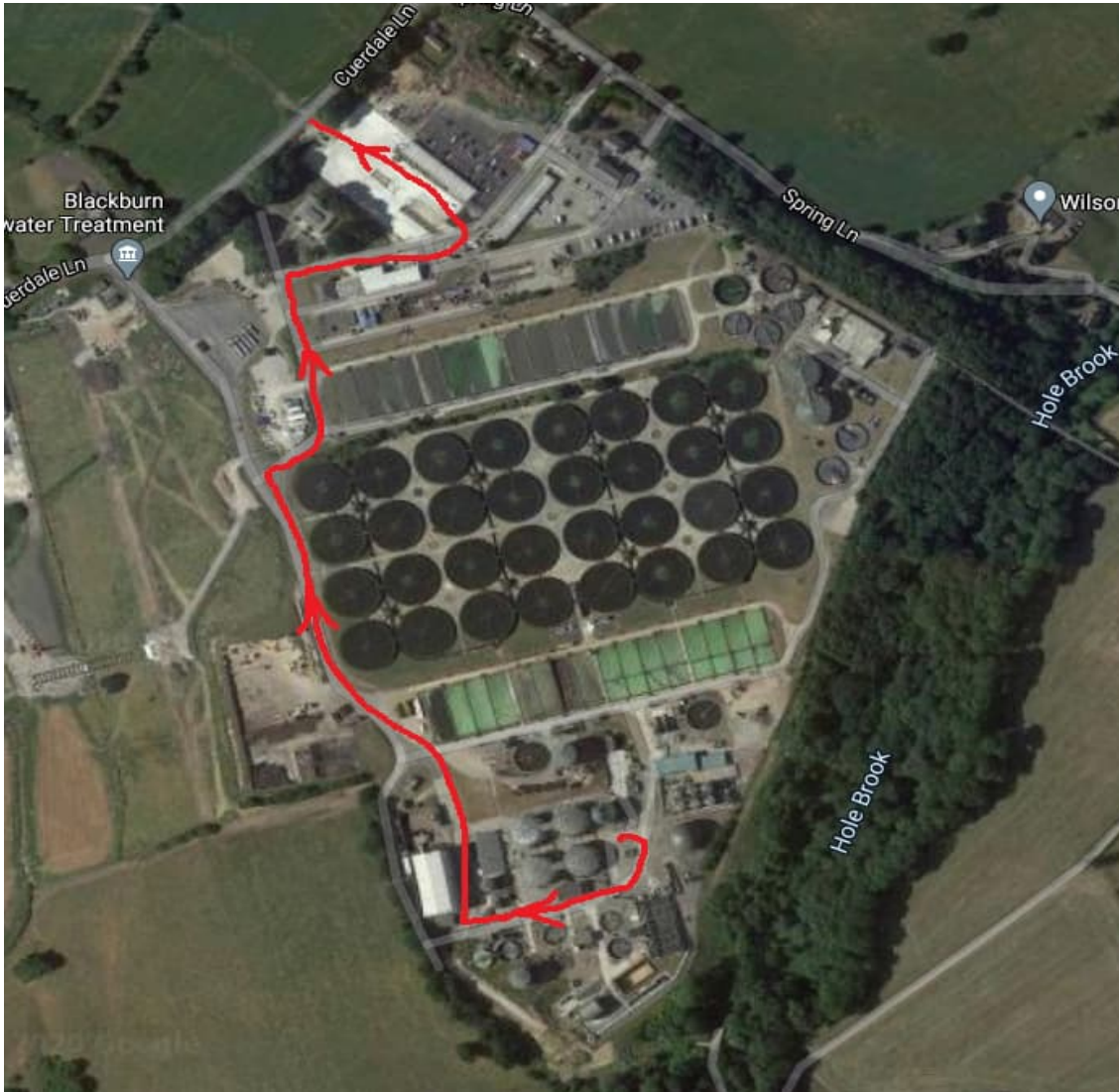
Task ID	Task	Activity Owner Name ⁴
1	Sound the alarm (DSC or representative) as per procedure in 2.1.1 above	
2	Forward Incident Controller as required in incident procedure	
3	Collect signing in log for roll call (logs if there are multiple sign in areas on site)	
4	Escalation communications as required in incident procedure	
5	Check of buildings to ensure all individuals on site are aware of the emergency & need to evacuate	
6	Roll call using signing in books and logs	
7	Supervise Evacuation – for personnel from buildings & vehicles Confirm to FIC all unnecessary personnel and visitors have left site via the planned evacuation routes & update sign in logs.	
8	Isolation of plant implementation of plant exclusion zone (see section 3.1 & 3.2)	
9	Collect Digester safety SSI documents and relevant documentation from emergency locker or other location for use by DSC	
10	Collect DSC Equipment from emergency locker for use by DSC Ensure radios, torches and gas monitors are functioning.	
11	Initiate site incident log – all staff to keep own notes and log details for incorporation into main site log	

Table 3: Emergency Activities & Responsibilities


Note⁴: name to be added at the time of the incident

 United Utilities Water for the North West	Wastewater Treatment	Reference: WwP/I/3006/17/18
	Site Specific Instruction (SSI)	Version: 13 Issue date: 18/04/2023 Expiry date: 18/04/2024
	Digestion and Biogas Emergency Plan Blackburn WwTW	
SSI's are published in UU's Wholesale QA System. If this document is printed please check it is the current version.		

2.4 Site Evacuation Routes



Site Access Route Map

 United Utilities Water for the North West	Wastewater Treatment	Reference: WwP/I/3006/17/18
	Site Specific Instruction (SSI)	Version: 13 Issue date: 18/04/2023 Expiry date: 18/04/2024
	Digestion and Biogas Emergency Plan Blackburn WwTW	
SSI's are published in UU's Wholesale QA System. If this document is printed please check it is the current version.		


2.5 Joint Emergency Services Interoperability Programme (JESIP)


In the event of a Digestion Plant Emergency ensure that the JESIP guidelines as detailed in the aide memoire below and overleaf are followed. This can also be downloaded to your phone as an 'App'.

AIDE MEMOIRE FOR ALL STAFF

Shared Situational Awareness

M	MAJOR INCIDENT	Has a major incident or standby been declared? (Yes / No - if no, then complete ETHANE message)
E	EXACT LOCATION	What is the exact location or geographical area of the incident?
T	TYPE OF INCIDENT	What kind of incident is it?
H	HAZARDS	What hazards or potential hazards can be identified?
A	ACCESS	What are the best routes for access and egress?
N	NUMBER OF CASUALTIES	How many casualties are there, and what condition are they in?
E	EMERGENCY SERVICES	Which and how many, emergency responder assets/personnel are required or are already on-scene?


JESIP
Working Together – Saving Lives
V3.0

 United Utilities Water for the North West	Wastewater Treatment	Reference: WWP/I/3006/17/18
	Site Specific Instruction (SSI)	Version: 13 Issue date: 18/04/2023 Expiry date: 18/04/2024
	Digestion and Biogas Emergency Plan Blackburn WwTW	
SSI's are published in UU's Wholesale QA System. If this document is printed please check it is the current version.		

AIDE MEMOIRE FOR COMMANDERS

Principles for Joint Working

CO-LOCATE
Co-locate with commanders as soon as practicably possible at a single, safe and easily identified location near to the scene.


COMMUNICATE
Communicate clearly using plain English.

CO-ORDINATE
Co-ordinate by agreeing the lead service. Identify priorities, resources and capabilities for an effective response, including the timing of further meetings.

JOINTLY UNDERSTAND RISK
Jointly understand risk by sharing information about the likelihood and potential impact of threats and hazards to agree potential control measures.

SHARED SITUATION AWARENESS
Shared Situational Awareness established by using METHANE and the Joint Decision Model.


JESIP
Working Together – Saving Lives
V3.0

 United Utilities Water for the North West	Wastewater Treatment	Reference: WwP/I/3006/17/18
	Site Specific Instruction (SSI)	Version: 13 Issue date: 18/04/2023 Expiry date: 18/04/2024
	Digestion and Biogas Emergency Plan Blackburn WwTW	
SSI's are published in UU's Wholesale QA System. If this document is printed please check it is the current version.		

2.6 Emergency Equipment and other Suppliers Details


2.6.1 DSC Emergency Locker

All digestion site emergency lockers must contain the standard equipment listed in the table below. Other site specific equipment may be considered as necessary.

On this site the Emergency Equipment Locker is located in the Press house Control Room and a Blackburn Suited Key is required to enter.

Equipment Held in Emergency Locker			
Equipment	Standard Equipment	Site Specific Equipment	Comments
Intrinsically safe tool kit	✓		Wetted Tools
Gas monitors (On site on Charge)	✓	✓	On window sill next to DSC locker
Gas Analyser	✓	✓	
Gloves	✓	✓	
Air Horns	✓	✓	
IS Torch	✓	✓	
IS Radio's	✓	✓	On window sill next to DSC locker
Rope	✓	✓	
Barrier Tape		✓	
DSC File		✓	
Whistle	✓		
Denso Tape	✓		
First Aid Kit	✓		
Disposable Gloves / Overhauls	✓		

Table 4: Emergency Locker Contents

 United Utilities Water for the North West	Wastewater Treatment	Reference: WwP/I/3006/17/18
	Site Specific Instruction (SSI)	Version: 13 Issue date: 18/04/2023 Expiry date: 18/04/2024
	Digestion and Biogas Emergency Plan Blackburn WwTW	
SSI's are published in UU's Wholesale QA System. If this document is printed please check it is the current version.		

2.6.2 The Locations of Other Standard Equipment

The locations of other standard equipment or of site specific equipment e.g. non-standard fittings for purging etc. are listed below.

Equipment Held in Davyhulme Stores			
Equipment	Standard Equipment	Site Specific Equipment	Comments
Purging Unit		✓	Stored At Davyhulme with 24hr access
Equipment Held in EEH Control Room			
Equipment	Standard Equipment	Site Specific Equipment	Comments
Purge Point Anti-Foam Dosing Rig		✓	Located in the EEH Control Room

Table 5: Site Specific Equipment Locations

All Emergency Equipment held in the Emergency Locker and elsewhere on site must be checked off as present by the DSC using the Weekly Check Sheet held in Appendix 5.8 and completed on a weekly basis. It is a responsibility of the site Production Manager to regularly audit this log.

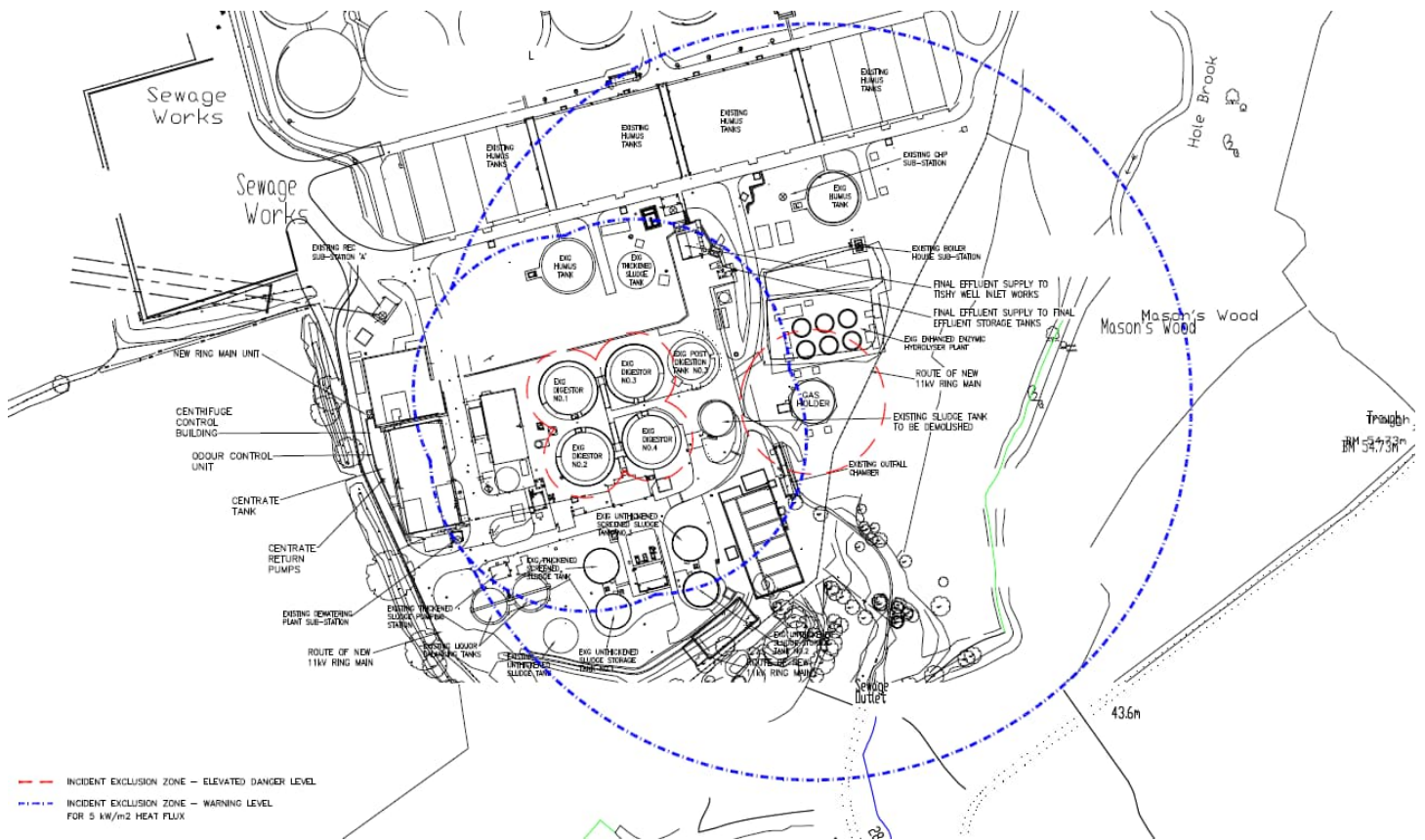
Digestion and Biogas Emergency Plan Blackburn WwTW

SSI's are published in UU's Wholesale QA System. If this document is printed please check it is the current version.


3.0 Plant Description

3.1 Plant Exclusion Zone

The Exclusion Zone will be implemented by DSC / Incident Manager Dependant on the nature and location of the incident.




Site Incident Control Drawing

 United Utilities Water for the North West	Wastewater Treatment	Reference: WwP/I/3006/17/18
	Site Specific Instruction (SSI)	Version: 13 Issue date: 18/04/2023 Expiry date: 18/04/2024
	Digestion and Biogas Emergency Plan Blackburn WwTW	
SSI's are published in UU's Wholesale QA System. If this document is printed please check it is the current version.		

3.2 Emergency Isolation Points

Table 6: Emergency Isolation Valve Schedule

BBB-DSC-1	Vessel 1 Drain Valve	Bottom of Vessel	Locked Closed
BBB-DSC-2	Vessel 2 Drain Valve	Bottom of Vessel	Locked Closed
BBB-DSC-3	Vessel 3 Drain Valve	Bottom of Vessel	Locked Closed
BBB-DSC-4	Vessel 3 Bypass Drain Valve	Bottom of Vessel	Locked Closed
BBB-DSC-5	Vessel 4 Drain Valve	Bottom of Vessel	Locked Closed
BBB-DSC-6	Vessel 5 Drain Valve	Bottom of Vessel	Locked Closed
BBB-DSC-7	Vessel 6 Drain Valve	Bottom of Vessel	Locked Closed
BBB-DSC-8	EEH - Gas Bag Isolation Valve	Between EEH + Gas Bag	Locked Open
BBB-DSC-9	Main Gas Line to Gas Holder Isolation	Top of Condensate Chamber	Locked Open
BBB-DSC-10	Gas Holder Bypass Valve	Bottom of Condensate Chamber	Locked Shut
BBB-DSC-11	Main Gas Holder Outlet Valve	Bottom of Condensate Chamber	Locked Open
BBB-DSC-12	Main Gas Holder Inlet Valve	Bottom of Condensate Chamber	Locked Open
BBB-DSC-13	Gas Holder Drain Valve	Bottom of Condensate Chamber	Locked Shut
BBB-DSC-14	Gas Holder Outlet Valve	Top of Condensate Chamber	Locked Open
BBB-DSC-15	Gas Holder Outlet Valve to Flare	Bottom of Condensate Chamber	Locked Open
BBB-DSC-16	Flare Stack Isolation Valve	Flare Stack Compound	Locked Open
BBB-DSC-17	Dig 1 Rotork Outlet Valve	Bottom OF Digester (Outlet Chamber)	Locked Open
BBB-DSC-18	Dig 1 Bottom Valve	Bottom OF Digester (Outlet Chamber)	Locked Shut
BBB-DSC-19	Dig 1 Outlet Valve	Bottom OF Digester (Outlet Chamber)	Locked Open
BBB-DSC-20	Dig 1 Top De-Cant Valve	Top of Digester (De-cant Chamber)	Locked Open
BBB-DSC-21	Dig 1 Main Gas Out Isolation Valve	Top of Digester Roof	Locked Open
BBB-DSC-22	Dig 1 Main Gas Compressor Isolation	Top of Digester Roof	Locked Open
BBB-DSC-23	Dig 1 Main Hatch Drain Valve	Bottom of Digester	Locked Shut
BBB-DSC-24	Dig 1 Pressure Instr Valve	Bottom of Digester	Locked Open
BBB-DSC-25	Dig 2 Rotork Outlet Valve	Bottom OF Digester (Outlet Chamber)	Locked Open
BBB-DSC-26	Dig 2 Bottom Valve	Bottom OF Digester (Outlet Chamber)	Locked Shut
BBB-DSC-27	Dig 2 Outlet Valve	Bottom OF Digester (Outlet Chamber)	Locked Open
BBB-DSC-28	Dig 2 Top De-Cant Valve	Top of Digester (De-cant Chamber)	Locked Open
BBB-DSC-29	Dig 2 Main Gas Out Isolation Valve	Top of Digester Roof	Locked Open
BBB-DSC-30	Dig 2 Pressure Instr Valve	Bottom of Digester	Locked Open
BBB-DSC-31	Dig 2 Main Hatch Drain Valve	Bottom of Digester	Locked Shut

 United Utilities Water for the North West	Wastewater Treatment	Reference: WwP/I/3006/17/18
	Site Specific Instruction (SSI)	Version: 13 Issue date: 18/04/2023 Expiry date: 18/04/2024
	Digestion and Biogas Emergency Plan Blackburn WwTW	
SSI's are published in UU's Wholesale QA System. If this document is printed please check it is the current version.		


BBB-DSC-32	Dig 2 Main Gas Compressor Isolation	Top of Digester Roof	Locked Open
BBB-DSC-33	Dig 3 Rotork Outlet Valve	Bottom OF Digester (Outlet Chamber)	Locked Open
BBB-DSC-34	Dig 3 Bottom Valve	Bottom OF Digester (Outlet Chamber)	Locked Shut
BBB-DSC-35	Dig 3 Outlet Valve	Bottom OF Digester (Outlet Chamber)	Locked Open
BBB-DSC-36	Dig 3 Top De-Cant Valve	Top of Digester (De-cant Chamber)	Locked Open
BBB-DSC-37	Dig 3 Main Gas Out Isolation Valve	Top of Digester Roof	Open not Locked
BBB-DSC-38	Dig 3 Main Hatch Drain Valve	Bottom of Digester	Shut not Locked
BBB-DSC-39	Dig 3 Pressure Instr Valve	Bottom of Digester	Locked Open
BBB-DSC-40	Dig 3 Main Gas Compressor Isolation	Top of Digester Roof	Locked Open
BBB-DSC-41	Dig 4 Rotork Outlet Valve	Bottom OF Digester (Outlet Chamber)	Locked Open
BBB-DSC-42	Dig 4 Bottom Valve	Bottom OF Digester (Outlet Chamber)	Locked Shut
BBB-DSC-43	Dig 4 Outlet Valve	Bottom OF Digester (Outlet Chamber)	Locked Open
BBB-DSC-44	Dig 4 Top De-Cant Valve	Top of Digester (De-cant Chamber)	Locked Open
BBB-DSC-45	Dig 4 Main Gas Out Isolation Valve	Top of Digester Roof	Locked Open
BBB-DSC-46	Dig 4 Main Hatch Drain Valve	Bottom of Digester	Shut not Locked
BBB-DSC-47	Dig 4 Pressure Instr Valve	Bottom of Digester	Open not Locked
BBB-DSC-48	Dig 4 Main Gas Compressor Isolation	Top of Digester Roof	Locked Open

3.3 Fire Hydrant Points

Drawings detailing the Fire Hydrant Points in the vicinity of the Digestion & Biogas Processes are held in the Appendices below (5.3)

3.4 Site Drainage Plan

Any loss of containment from the liquid sludge held on site could have a compliance implication if allowed to access unmade ground or inappropriate drainage areas. Drawings detailing the site drainage are detailed in the appendix below (5.5). These records should be consulted as soon as possible should a loss of containment of liquid sludge be suspected.

 United Utilities Water for the North West	Wastewater Treatment	Reference: WwP/I/3006/17/18
	Site Specific Instruction (SSI)	Version: 13 Issue date: 18/04/2023 Expiry date: 18/04/2024
	Digestion and Biogas Emergency Plan Blackburn WwTW	
SSI's are published in UU's Wholesale QA System. If this document is printed please check it is the current version.		

3.5 Mobile Phone Storage Lockers

When accessing the digestion zoned areas it is important that no sources of ignition are brought into the area in an uncontrolled manner due to the potential risk of explosion.

Mobile phones should not be taken on site during normal operation or an emergency situation. Ex-rated radios are provided in the DSC locker for use on site in the event of an emergency where remote communication is required with those working in the area.

Mobile phones should be left in a safe place – either in an appropriate MCC / control room or in specific storage lockers.

On this site mobiles should be left in the **Centrifuge Control Room** located **downstairs in the Hub Control Room** and all mobiles should be secured here before accessing the plant.


3.6 Purge Plan

Any purging activities will require planned activities, even in an emergency, and will require additional resources and equipment.

The Purge Plan for Blackburn WwTW is therefore detailed separately on the QA system. An uncontrolled, printed, copy of the latest purge plan or plans will be held in the DSC locker and be available in an emergency. This printed copy should be checked and updated regularly to ensure it is up to date.

4.0 Operating Tasks

This section is not currently used. For consistency please leave and do not amend document numbering.

 United Utilities Water for the North West	Wastewater Treatment	Reference: WwP/I/3006/17/18
	Site Specific Instruction (SSI)	Version: 13 Issue date: 18/04/2023 Expiry date: 18/04/2024
	Digestion and Biogas Emergency Plan Blackburn WwTW	
SSI's are published in UU's Wholesale QA System. If this document is printed please check it is the current version.		

5.0 Appendices

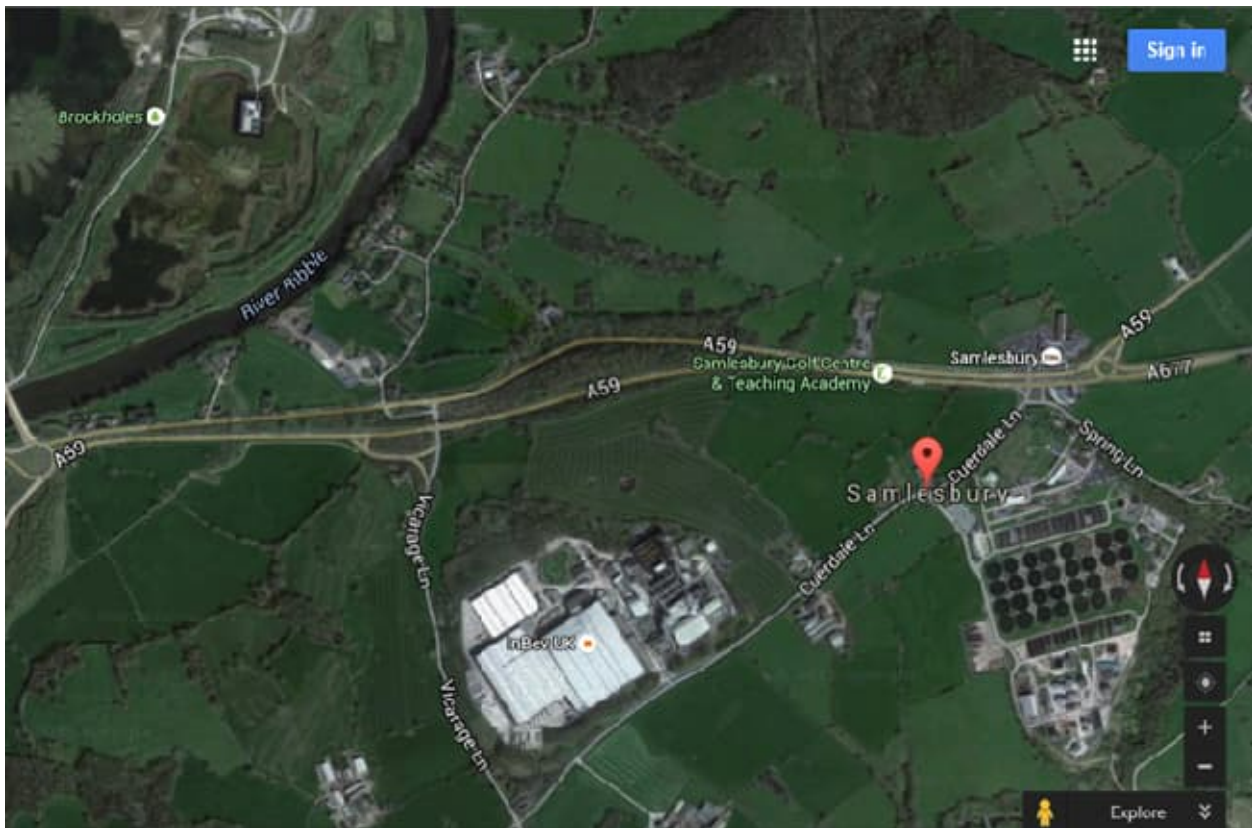
5.1 Site Location Details

5.1.1 Site Address

Blackburn WwTW
 Cuerdale Lane
 Samlesbury
 PR5 0UY

Grid Ref SD 60470-29410

5.1.2 Site Location Map Site Location Map



Digestion and Biogas Emergency Plan Blackburn WwTW

SSI's are published in UU's Wholesale QA System. If this document is printed please check it is the current version.

5.2 Accident & Emergency Hospital Location & Access Routes

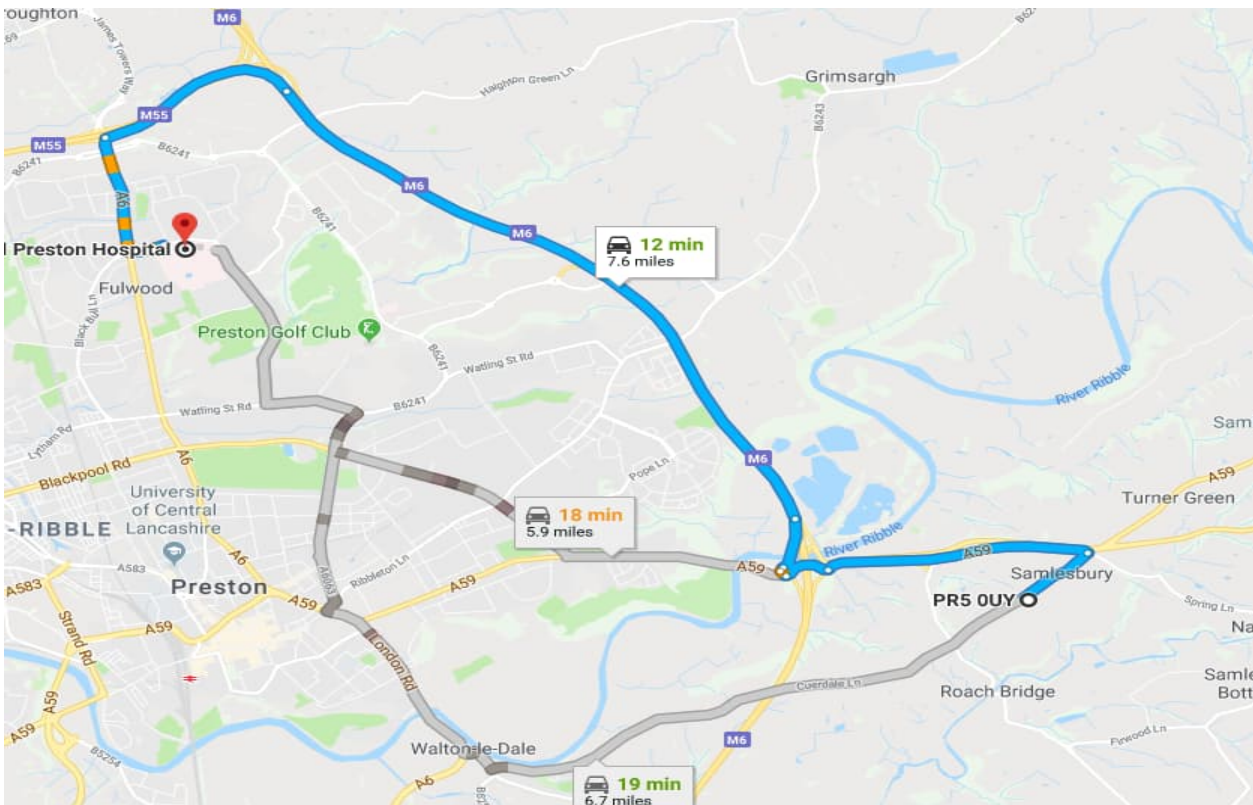
The nearest Accident & Emergency Hospital is:

Preston Royal

The Hospital address is:

Sharoe Green Lane North
Fulwood
Preston
PR2 9HT

The access routes to the Hospital are:

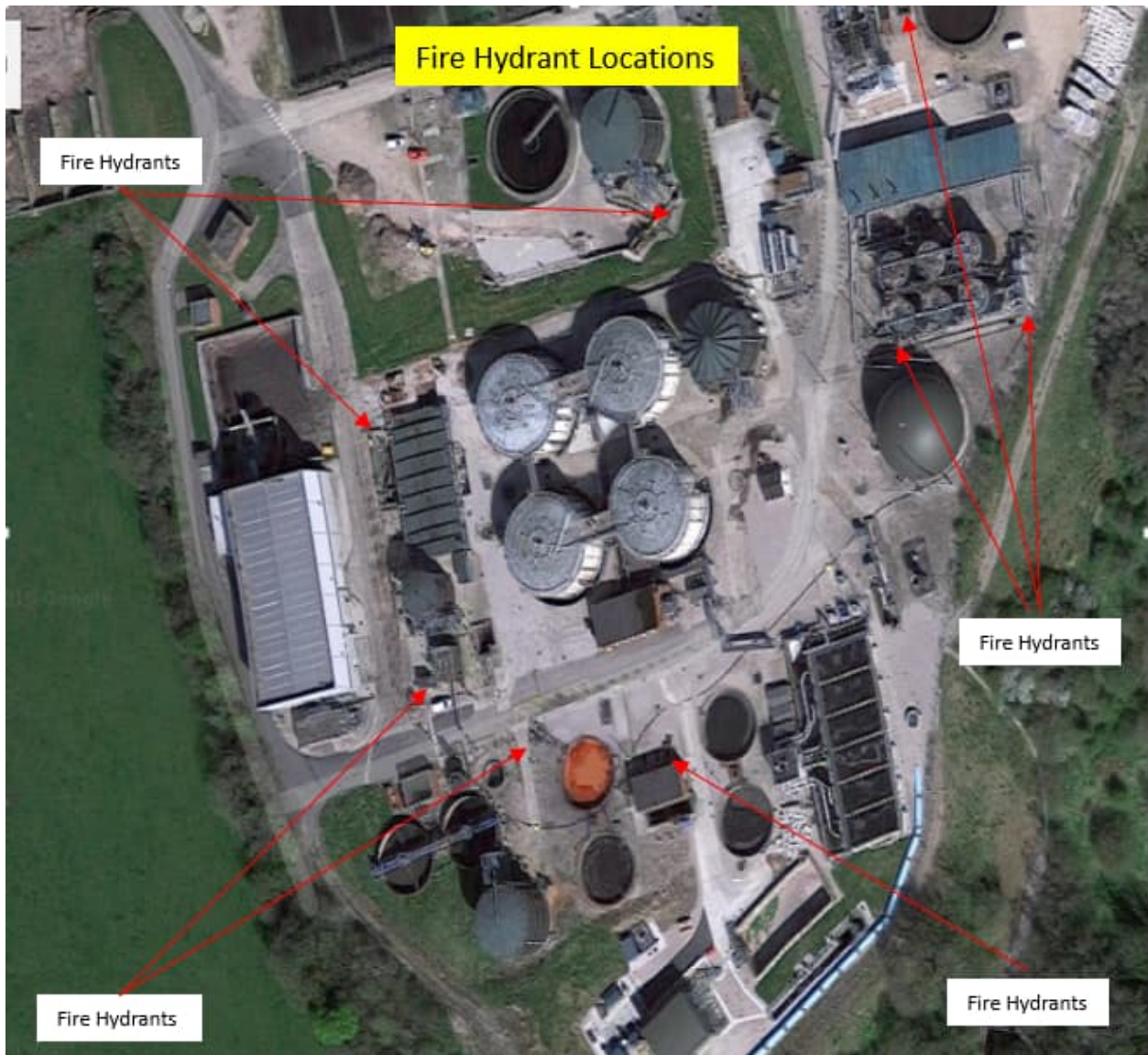



Get on the M6 from Cuerdale Lane 2.2 mile
 Take Exit 32 - Broughton interchange from the M6 4.6 mile
 Continue on Garstang Road / A6. 0.8 mile
 Drive to Sharoe Green Lane in Fulwood

Digestion and Biogas Emergency Plan Blackburn WwTW

SSI's are published in UU's Wholesale QA System. If this document is printed please check it is the current version.

5.3 Fire Hydrant Details



 United Utilities Water for the North West	Wastewater Treatment	Reference: WwP/I/3006/17/18
	Site Specific Instruction (SSI)	Version: 13 Issue date: 18/04/2023 Expiry date: 18/04/2024
	Digestion and Biogas Emergency Plan Blackburn WwTW	
SSI's are published in UU's Wholesale QA System. If this document is printed please check it is the current version.		

5.4 List of Symbols used in this Document








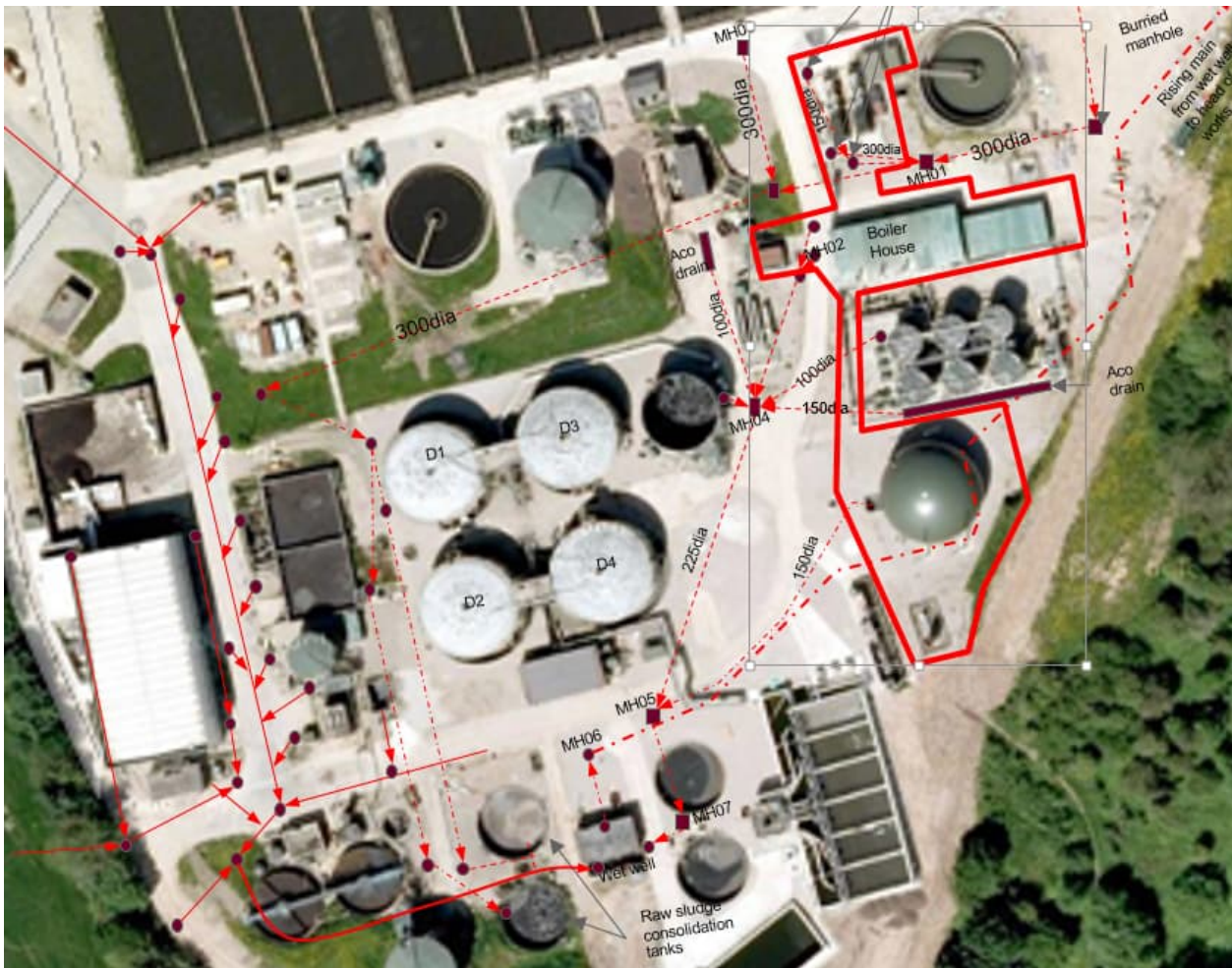
Symbol	Potential Hazard Description
	Biogas under Pressure UU Biogas systems operate at low pressure (including where boosted) but this is always above ambient pressure. On some sites medium or high pressure natural gas lines may also be present.
	Health or Environment Hazard Methane, hydrogen sulphide and carbon dioxide are all present in varying proportions in biogas. Each of these can be hazardous to health in different ways (See Code of Practice for details)
	No smoking or Other Ignition Sources At no time is smoking permitted within the DSEAR zoned areas surrounding a digestion plant. Vehicles and any other ignition sources should also be excluded from the area.
	Supplementary or Waste Fuels On Site Fire risk from stored waste or new fuels
	Activated Carbon Used as a biogas cleanup medium. If air purged and left open to can be auto combustible when wet or damp.
	Confined Spaces Consult the site confined spaces register for further details
	Flammable Material - Methane Gas

Table 7: List of Symbols

Digestion and Biogas Emergency Plan Blackburn WwTW

SSI's are published in UU's Wholesale QA System. If this document is printed please check it is the current version.


5.5 Site Drainage Plan



5.6 List of Acronyms Used in This Document

Acronym	Description
DSC	Digester Safety Controller
FIC	Forward Incident Controller
G2G	Gas to Grid
JESIP	Joint Emergency Services Interoperability Programme
OCU	Odour Control Unit
SOP	Standard Operating Procedure
SSI	Site Specific Instruction

Table 8: List of Acronyms

 United Utilities Water for the North West	Wastewater Treatment	Reference: WWP/I/3006/17/18
	Site Specific Instruction (SSI)	Version: 13 Issue date: 18/04/2023 Expiry date: 18/04/2024
	Digestion and Biogas Emergency Plan Blackburn WwTW	
SSI's are published in UU's Wholesale QA System. If this document is printed please check it is the current version.		

5.7 Reference Information

5.7.1 SOP's and Forms

SOP / Form	Title
WP/S/001/30/01 Incident Response	Incident Response
WP/F/001/31/08	Site Diary Log

Table 9: SOPs

5.7.2 SSI's

SSI	Title
TBA	Purge Plan for Blackburn WwTW

Table 10: SSIs

5.7.3 Site Specific Drawings


Site Specific Drawings are held in the EEH Control Room. They are also held on the QA SharePoint [Here](#)

5.7.4 Digestion Code of Practice

The Digestion Code of Practice (CoP) is available through the Technical Library.

5.7.5 Incident & Crisis management Policy

http://one/documents/Incident_and_Crisis_Management_Policy_and_Procedure.pdf

 United Utilities Water for the North West	Wastewater Treatment	Reference: WwP/I/3006/17/18
	Site Specific Instruction (SSI)	Version: 13 Issue date: 18/04/2023 Expiry date: 18/04/2024
	Digestion and Biogas Emergency Plan Blackburn WwTW	
SSI's are published in UU's Wholesale QA System. If this document is printed please check it is the current version.		


5.8 Emergency Equipment Weekly Check Sheet

All Emergency Equipment held in the Emergency Locker and elsewhere on site must be checked off as present by the DSC on a weekly basis and this Weekly Check Sheet completed.

Equipment Checked by:	Signature:	Date:
-----------------------	------------	-------

Equipment Held in Emergency Locker		
Equipment	Present Yes (✓) or No (X)	Comments
Intrinsically safe tool kit		
Gas monitors (On site on Charge)		
Gloves		
Air Horns		
IS Torch		
IS Radio's		
Rope		
Whistle		
Barrier Tape		
Gas Analyser		
Ear Defenders		
Whistle		
Denso Tape		
First Aid Kit		
Disposable Gloves / Overhauls		

Table 10: Emergency Locker weekly check sheet

 United Utilities Water for the North West	Wastewater Treatment	Reference: WwP/I/3006/17/18
	Site Specific Instruction (SSI)	Version: 13 Issue date: 18/04/2023 Expiry date: 18/04/2024
	Digestion and Biogas Emergency Plan Blackburn WwTW	
SSI's are published in UU's Wholesale QA System. If this document is printed please check it is the current version.		

5.9 Example Incident Log

Date & Time	Info Available	Activity, Action / Decision Taken	Staff Involved	Risks Considered	Outcome
13/04 18:30	Digester high level alarm responded to on site and sludge loss of containment suspected	DSC & PE to be notified and duty manager made aware	Standby Ops (J. Smith) & RMC	Possible Digester safety issue. Incident escalation may be needed.	Escalation processes initiated and incident procedures to be followed at site