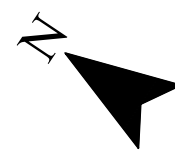
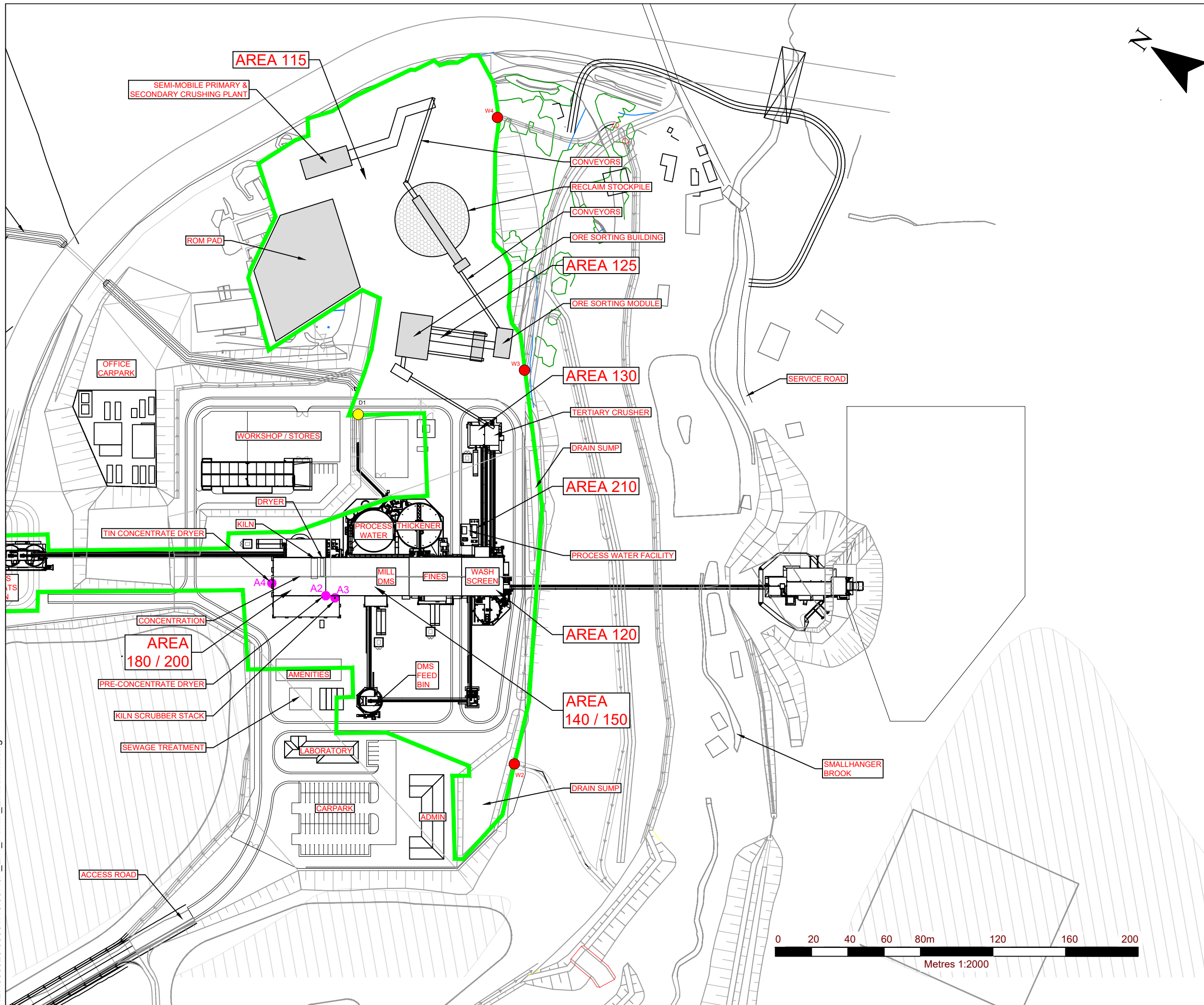





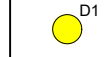


427.000026.00001.13.007.0A_Env_Permit_Emissions.dwg



LEGEND

-  ENVIRONMENTAL PERMIT BOUNDARY
-  A2 PRE-CONCENTRATE DRYER
-  A3 REDUCTION KILN
-  A4 TIN CONCENTRATE DRYER
-  W2 WATER RELEASE POINTS
-  D1 TAILINGS DISCHARGE POINT

AREA	ACTIVITY
115	PRIMARY & SECONDARY CRUSHING
120	WASH SCREEN
125	ORE SORTING
130	TERITARY CRUSHING
140	DENSE MEDIA SEPARATION
150	PRIMARY MILL
180	CONCENTRATE MILLING & PREPARATION
200	CONCENTRATE DRESSING
210	WATER TREATMENT

DRAKELANDS RESTORATION LTD

SLR 
 global environmental solutions

65 WOODBRIDGE ROAD
 GUILDFORD
 SURREY
 GU1 4RD

T: +44 (0)1483 889800
 www.slrconsulting.com

HEMERDON MINERAL PROCESSING FACILITY
ENVIRONMENTAL PERMIT APPLICATION
ENVIRONMENTAL PERMIT BOUNDARY
SITE LAYOUT & EMISSIONS POINTS

007

Scale 1:2000 @ A3 Date NOVEMBER 2022

