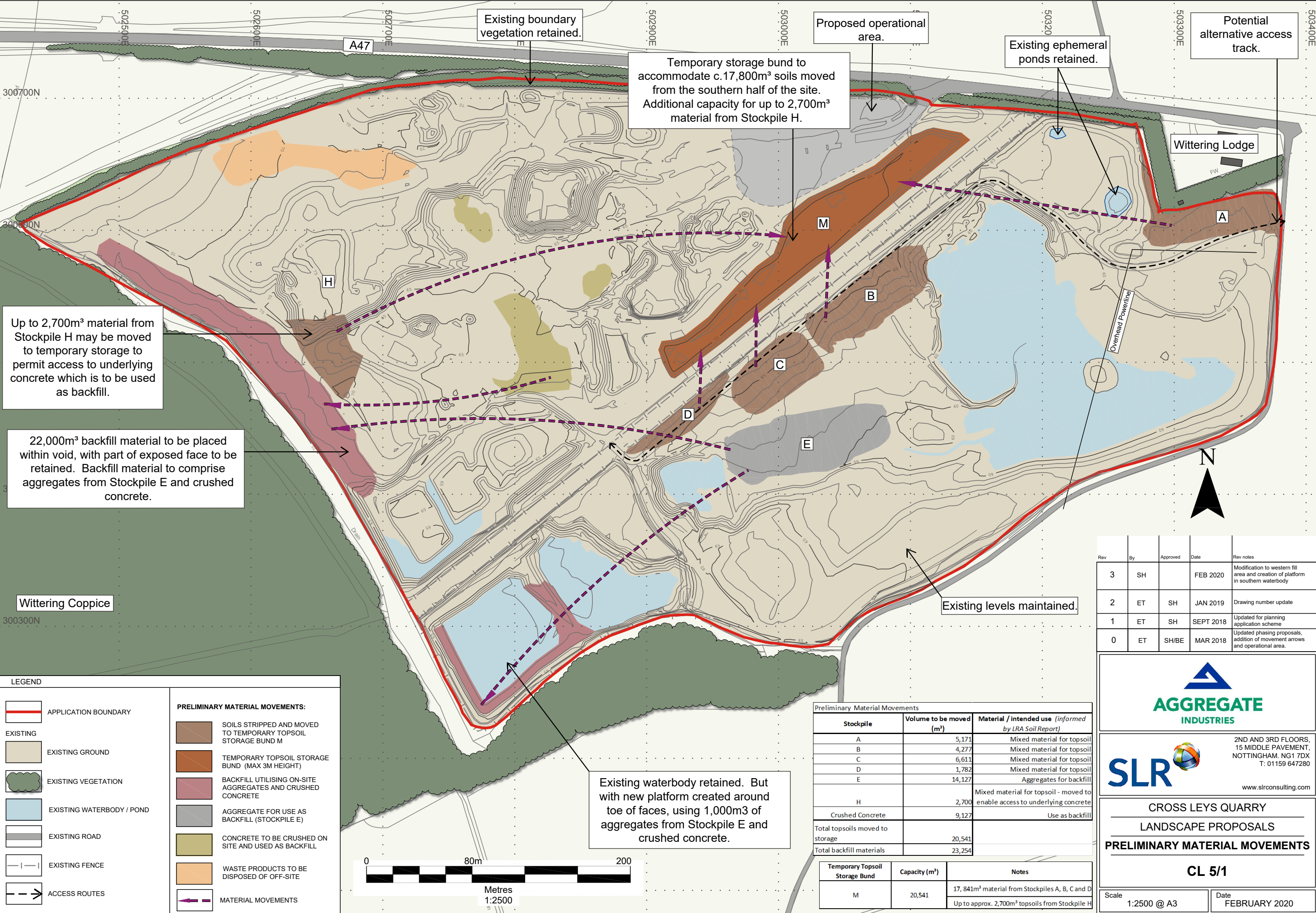


200225_00275.00233.29.001.0_Prelim_Material_Movements_Feb20.dwg



Rev	By	Approved	Date	Rev notes
3	SH		FEB 2020	Modification to western fill area and creation of platform in southern waterbody
2	ET	SH	JAN 2019	Drawing number update
1	ET	SH	SEPT 2018	Updated for planning application scheme
0	ET	SH/BE	MAR 2018	Updated phasing proposals, addition of movement arrows and operational area.

2ND AND 3RD FLOORS,
15 MIDDLE PAVEMENT,
NOTTINGHAM. NG1 7DX
T: 01159 647280
www.slrconsulting.com

CROSS LEYS QUARRY
LANDSCAPE PROPOSALS
PRELIMINARY MATERIAL MOVEMENTS
CL 5/1

Scale: 1:2500 @ A3
Date: FEBRUARY 2020