



PT-CE Ltd

---

# DUST EMISSIONS MANAGEMENT PLAN

Pode Hole Quarry



PT-CE Ltd

---

# DUST EMISSIONS MANAGEMENT PLAN

Pode Hole Quarry

TYPE OF DOCUMENT (VERSION) CONFIDENTIAL

PROJECT NO. UK0038843\_2142

OUR REF. NO. UK0038843\_2142-WSP-RP-GW-0010\_C03

DATE: OCTOBER 2025

WSP

Attenborough House, Browns Lane Business Park

Stanton-on-the-Wolds

Nottingham

NG12 5BL

Phone: +44 115 9371111

WSP.com



# QUALITY CONTROL

---

Issue/revision	First issue	Revision 1	Revision 2	Revision 3
Remarks	Final for Issue			
Date	14 October 2025			
Prepared by	Paul Hopper			
Signature				
Checked by	Nicola White			
Signature				
Authorised by	Nicola White			
Signature				
Project number	UK0038843_2141			
Report number	UK0038843_2142- WSP-RP-GW- 0010_C03			
File reference				



# CONTENTS

---

<b>1</b>	<b>INTRODUCTION</b>	<b>1</b>
<b>1.1</b>	<b>GENERAL</b>	<b>1</b>
<b>1.2</b>	<b>SITE SETTING</b>	<b>1</b>
<b>1.3</b>	<b>SITE OPERATIONS</b>	<b>3</b>
<b>2</b>	<b>LEGAL COMPLIANCE</b>	<b>5</b>
<b>3</b>	<b>RECORD KEEPING</b>	<b>6</b>
<b>4</b>	<b>AUDITING AND REVIEW</b>	<b>7</b>
<b>5</b>	<b>POTENTIAL FOR EMISSIONS</b>	<b>8</b>
<b>6</b>	<b>MITIGATION MEASURES</b>	<b>10</b>
<b>6.1</b>	<b>GENERAL</b>	<b>10</b>
<b>6.2</b>	<b>WEATHER</b>	<b>10</b>
<b>6.3</b>	<b>SOIL STRIPPING, REMOVAL FROM STOCKPILES/BUNDS AND REINSTATEMENT</b>	<b>10</b>
<b>6.4</b>	<b>LOADING AND TIPPING</b>	<b>11</b>
<b>6.5</b>	<b>INERT WASTE FILL OPERATIONS</b>	<b>11</b>
<b>6.6</b>	<b>SITE HAULAGE</b>	<b>11</b>
<b>6.7</b>	<b>ROAD TRANSPORT</b>	<b>11</b>
<b>6.8</b>	<b>WIND BLOWN ACROSS BARE GROUND AND STOCKPILES</b>	<b>12</b>
<b>6.9</b>	<b>OTHER MATTERS</b>	<b>12</b>
<b>7</b>	<b>MONITORING</b>	<b>13</b>
<b>7.1</b>	<b>DUST MONITORING</b>	<b>13</b>
<b>7.2</b>	<b>PM<sub>10</sub> MONITORING</b>	<b>13</b>
<b>8</b>	<b>MAINTENANCE OF PLANT AND EQUIPMENT</b>	<b>14</b>

---



<b>9</b>	<b>SITE MANAGEMENT</b>	<b>15</b>
<b>10</b>	<b>EMERGENCY RESPONSE</b>	<b>16</b>
<b>11</b>	<b>COMPLAINTS</b>	<b>17</b>

---

---

## ***TABLES***

Table 1-1 – Waste Codes to be Accepted	3
Table 5-1 – Source, Pathways and Receptors for Dust Emissions	8

---

## ***FIGURES***

**No table of figures entries found.**

---

## ***APPENDICES***

APPENDIX A

DRAWINGS



# 1 INTRODUCTION

---

## 1.1 GENERAL

This Dust Management Plan (DMP) has been prepared by WSP UK Ltd (WSP), on behalf of PT-CE Ltd (PT-CE).

The Guidance on *Control and monitor emissions for your environmental permit* requires the provision of a DMP if a bespoke permit covers disposing of household, commercial or industrial waste in a landfill and there are sensitive receptors such as residential housing within 500 m of the installation which applies to the Site (see **Section 1.2**).

This DMP outlines the approach to the management and minimisation of potential dust emissions and assesses dust levels, sources and pathways during operational activities comprising the excavation and movement of topsoil, subsoil, bulk/engineered clay fill, and inert waste materials at the site.

The DMP serves as a consistent point of reference for environmental considerations throughout the operational period for PT-CE. Potential dust impacts from the recovery of inert waste materials are also managed in accordance with the Environmental Permit. The other potential dust sources were assessed as of low significance.

This DMP is a 'live' document, which shall be updated accordingly as the project is progressed. Consequently, the DMP should be reviewed after 12 months operation at the site and revised as required.

## 1.2 SITE SETTING

The Site is located 1.85 km west of the village of Thorney and 5 km west of Peterborough. The A47 ('The Causeway') runs 460 m to the north of the Site and Willow Hall Lane runs along the western boundary of the Site. The Site extends to approximately 68.5 hectares (Ha).

Ground elevations in the surrounding area are fairly flat and at about 3 m above Ordnance Datum (AOD). The Site currently has a shallow undulating landform that is mostly below surround ground level.

Within the quarry void are semi-restored areas backfilled with overburden materials, areas where the underlying Oxford Clay has been excavated and replaced in engineered layers, and stockpiles of sub-soil and topsoil. Surface water and groundwater from the shallow aquifer accumulate to form shallow pools.

The land use surrounding the Site is predominantly agricultural fields with associated farmhouses. The historical use of the Site was also agricultural. Bar Pastures Quarry, an extension to Pode Hole Quarry that is operated by Aggregate Industries, is located immediately west/southwest of the Site. There is another mineral working located immediately west/northwest of the Site (operated by Land Logical Thorney Limited). Both Bar Pastures Quarry and the Land Logical site have abstraction licences to dewater for mineral processing purposes. Eye Quarry (operated by Cemex) and Eye Landfill (operated by Biffa) is located immediately south/southwest of Bar Pastures Quarry.

Quarry operations started at the Site in 1998 and ceased in November 2019. The material was extracted dry (i.e. the sands and gravels were temporarily dewatered by groundwater abstraction

that took place from a point towards the north of the Site (at grid reference TF 26040,03040)). Dewatering at that location has ceased but continues at the neighbouring Bar Pastures Quarry and the Land Logical sites. There are no longer any quarrying operations taking place at the Site.

A clay batter was installed in 2016/2017 along an approximately 300 m section of the quarry sides in order to provide some protection from deterioration of a nearby scheduled ancient monument (Iron Age and Roman Settlement at Bar Pastures) from the operations at the Site.

The current Site layout is shown on the July 2023 topographic survey drawing PODEHOLETOPOJUL23, which is included in Appendix A. The location of the Site entrance, reception, weighbridge and wheel wash are shown on Weighbridge Location drawing PHQWBL080419, which is included in Appendix A. Bar Pastures Quarry is located outside the EP application boundary, but activities at that location will share the Site entrance and associated facilities.

The Site lies within Peterborough City Councils administrative area. There is an Air Quality Management Area (AQMA) to the southwest of the Site for sulphur dioxide (SO<sub>2</sub>) relating to emissions from Brickworks at Whittlesey. The AQMA was declared in May 2007 and to date has not been revoked. There are no other AQMA's identified by DEFRA for this area.

Key residential receptors within 500 m of the Site (measured from the permit application boundary) are located as follows:

- PODE HOLE FARM – 400 m to NNE;
- 58 THE CAUSEWAY – 500 m to N
- PASTURE HOUSE FARM – 500 m to NNW
- BAR PASTURE FARM – 20 m to W.

The windrose for this area (shown on **Drawing ESID2 – Environmental Setting, Appendix A**) shows the predominant wind direction to be from the south-west which will result in the closest residential receptor, Bar Pasture Farm being upwind of the Site, which will minimise any impacts from the works.

Key statutory receptors are as follows:

- NENE WASHES (SPA) – approximately 4 km to the south.
- NENE WASHES (SSSI) - approximately 4 km to the south.
- NENE WASHES (SAC) – approximately 4.7 km to the south.
- NENE WASHES RAMSAR – approximately 4.0 km to the south.
- DOGSTHORPE STAR PIT (SSSI) – approximately 4 km to the west.
- DOGSTHORPE STAR PIT (LNR) – approximately 4 km to the west.
- EYE GRAVEL PIT (SSSI) - approximately 2.6 km to the west.

Non-statutory receptors are as follows:

- EYEBURY ROAD PITS (CWS) – approximately 750 m to the west.

Cultural heritage features within 1 km of the site boundary include:

- Scheduled Ancient Monument, Iron Age and Roman settlement at Bar Pastures – adjacent to western boundary.
- Scheduled Ancient Monument, Bowl Barrow 780 m east of Bar Pasture Farm.
- Scheduled Ancient Monument, two Bowl Barrows 940 m south of Bar Pasture Farm.

- Grade II listed building at Willow Hall – approximately 850 m to the south.
- Grade II listed building at Prior’s Farmhouse – approximately 1.2 km to the south.

Bar Pastures Scheduled Ancient Monument (SAM) is located to the west of the Site, around Bar Pastures Farm. It is part of a settlement of Iron Age and Roman date, with a drove and associated ditches, rectilinear yards and other enclosures, some of which contain the remains of buildings. It is located on a gravel terrace about 1 km west of what was, formerly, the edge of the peat fen. Archaeological features are visible as low earthworks and as buried features within the underlying gravel below the depth of ploughing.

A second SAM comprises two bowl barrows, approximately 60 m beyond the southern boundary of the Site, situated on gravel islands along the prehistoric fen edge. These comprise earth mounds with encircling ditches associated with burials. The ditches have been infilled, and the deeper remains are protected by Fen deposits.

### 1.3 SITE OPERATIONS

PT-CE are looking to restore the existing quarry void via landfilling with a bespoke Deposit for Recovery environmental permit back to agricultural land. This will be achieved by the importation of up to 1,807,000 cubic metres of inert waste over a period of approximately 10 years. The Site will be restored in a series of phases as shown on **Drawing ESID04 – Site Layout and Waste Deposition**.

Deposit for recovery uses waste material instead of non-waste material to perform a function; in this case quarry restoration. This allows the non-waste to be available for other uses. Only suitable inert restoration materials will be imported for the purpose of the quarry restoration in order to comply with the requirements of Deposit for Recovery. The inert restoration materials in this case will include soils, subsoils and minerals. These materials will not be classified as hazardous waste. Full details of the specific waste codes proposed for the restoration materials, and additional restrictions on these, are included in the Waste Recovery Plan, and summarised in **Table 1-1**. No waste codes ending in ‘99’ are intended to be accepted. Wastes that consist solely or mainly of dusts, powders or loose fibres, and waste that are in a form which is either sludge or liquid will not be accepted.

**Table 1-1 – Waste Codes to be Accepted**

Waste Code	Waste Description	Additional Restrictions
01 01 02*	Wastes from mineral non-metalliferous excavation	Restricted to waste overburden and interburden only.
01 04 08*	Waste gravel and crushed rocks other than those mentioned in 01 04 06	-
01 04 09*	Waste sand and clays	-
17 01 01*	Concrete	-
17 01 02*	Bricks	-

17 01 03*	Tiles and Ceramics	-
17 01 07*	Mixtures of concrete, bricks, tiles and ceramics other than those mentioned in 17 01 06	Metal from reinforced concrete must have been removed.
17 05 04*	Soils and stones other than those mentioned in 17 05 03	Restricted to topsoil, subsoil and stones only.
19 12 09*	Minerals (for example sand, stones) only	Restricted to wastes from treatment of wastes that are otherwise naturally occurring minerals. Does not include fines from treatment of any non-hazardous waste or gypsum from recovered plasterboard.
19 12 12	Other wastes (including mixtures of materials) from mechanical treatment of wastes other than those mentioned in 19 12 11	Restricted to crushed bricks, tiles, concrete and ceramics only. Metal from reinforced concrete must be removed.
20 02 02*	Soils and stones	Restricted to topsoil, subsoil and stones only.

## 2 LEGAL COMPLIANCE

---

This DMP is based on measures to ensure legal compliance and to establish good management practice and includes compliance with the following:

- Air Quality Standards Regulations 2010 (as amended); and
- Environmental Protection Act 1990.

PT-CE will comply with the DMP in order to meet relevant air quality legislation and best practice with regard to loss of amenity and nuisance due to the impact of dust emissions. In the UK, there is no official Air Quality Standard (AQS) level for the total dust deposition rate that would be considered to create a nuisance. An 'unofficial' nuisance dust deposition rate widely accepted is an annual mean of 200 mg/m<sup>2</sup>/day for the total dust deposited.

### 3 RECORD KEEPING

---

The Site Manager or nominated deputy will be responsible for dust management and for maintaining a register of monitoring which will be made available for auditing and inspection.

An up-to-date copy of the DMP will be maintained at the Site Reception office.

Records of formal visual site inspections (undertaken daily, and more frequently during periods of high winds, by the Site Manager or nominated deputy) and any complaints will be maintained. The following points will be noted with regards to visual inspections and response to complaints:

- Any elevated dust levels, meteorological conditions and any actions undertaken;
- Any increase in the frequency of site inspections and dust issues on-site when activities with a high potential to produce dust are being carried out and during prolonged dry or windy conditions;
- Any exceptional incidents that cause dust emissions, either on-or off-site, and the action taken to resolve the situation; and
- Full details of any dust complaints including complainant name, location and contact details, identification of cause(s), and any appropriate measures taken to reduce emissions in a timely manner.

## 4 AUDITING AND REVIEW

---

Audits of the DMP will be undertaken by PT-CE. The audit will check that all necessary documentation is held. Visual monitoring and complaints records will be audited to ensure that full records are kept, and all necessary information is recorded. An audit schedule will be arranged but will include an annual audit, as a minimum requirement.

To ensure the DMP remains 'fit for purpose' for the duration of the project, it will be regularly reviewed and updated to facilitate efficient and effective delivery of the project legal and environmental commitments. A log will be kept including a summary of the update and a record of the review.

Reviews of the DMP will be undertaken and recorded by PT-CE with the findings of the reviews reported to the Site Manager and other staff members as required.

## 5 POTENTIAL FOR EMISSIONS

Dust and emissions arising from excavation, soil movement and restoration activities can cause health risks to receptors and nuisance and annoyance to local residents and businesses. The level of dust emitted will be dependent on the activity undertaken, the location of the activity on Site, and the nature of the dust. The generation and dispersion of the dust will be influenced by other meteorological factors such as wind speed and direction and/or, periods of dry weather. Traffic movements have potential to generate dust emissions as vehicles move within the site.

In general terms, adverse dust impacts from sand and gravel quarry-type activities are uncommon beyond 250 m (and beyond 400 m from hard rock quarries) measured from the nearest dust generating activities. It is commonly accepted that the greatest impacts will be within 100 m of a source, and this can include both large (>30 µm) and small dust particles<sup>1</sup>. From the nature of the proposed operations, adverse impacts due to nuisance dust are therefore most likely to be experienced within this distance.

The principal potential sources of airborne dust associated with the proposed development include:

- Soils (topsoil and subsoil) stripping, stockpiling and replacement;
- Waste material delivery;
- Temporary waste material storage (stockpiling);
- Spreading and levelling of waste materials by mobile plant;
- Inert fill and engineered fill operations;
- Haulage of material around the site; and
- Wind-blown across stripped areas, stockpiles and other loose bare surfaces.

Other potential dust sources were assessed as of low significance.

Table 5-1 provides further details on the source, pathway and receptors associated with the principal sources of airborne dust identified above. Mitigation measures are discussed in Section 6.

**Table 5-1 – Source, Pathways and Receptors for Dust Emissions**

Source	Pathway	Receptor	Type of Impact
Mud	Vehicles/wheels tracking dust, then mud falls off when vehicles/wheels dry	Local properties, site workers, delivery drivers	Visual soiling and reintroduction as airborne particles
Debris	Debris falling from vehicles	Local properties, site workers, delivery drivers	Visual soiling and reintroduction as airborne particles

<sup>1</sup> Institute of Air Quality Management (2016). Guidance on the Assessment of Mineral Dust Impacts for Planning (v1.1)



Haul roads	Dust from vehicle movements	Local properties, site workers, delivery drivers	
Vehicle exhaust emissions	Atmospheric dispersion	Local properties, site workers, delivery drivers	Airborne particulates
Tipping of waste	Atmospheric dispersion	Local properties, site workers, delivery drivers	Airborne particulates
Soil stockpiles	Atmospheric dispersion	Local properties, site workers, delivery drivers	Airborne particulates

## 6 MITIGATION MEASURES

---

### 6.1 GENERAL

Soil movement and restoration activities are transient operations where a number of processes take place over relatively large areas but for relatively short periods. Dust emissions can occur at a number of stages, but these can be significantly controlled by best practice such as:

- Appropriate design and phasing of the works including layout and working procedures;
- Using and properly maintaining carefully selected equipment;
- Understanding the potential for dust emissions to occur;
- Training and supervising site staff in dust control; and
- Applying appropriate mitigation measures.

A range of dust control and mitigation measures are set out. These include dust containment, where dust emissions are minimised through use of appropriate equipment and systems; dust suppression, where dust emissions are controlled by the use of water sprays etc. and dust management, where the potential for dust emissions to occur are reduced through effective control of site operations.

Standard good practices as detailed in PGN 3/08(12)<sup>2</sup> are relevant to the proposed development. The essence of the guidance is the control of emissions through good site management. The points below identify mandatory mitigation measures and recommended best practice:

### 6.2 WEATHER

As an over-riding requirement, if during dry windy weather any operations are identified as causing or likely to cause visible emissions across the site boundaries, or if abnormal emissions are observed within the site, the Site Manager or nominated deputy will immediately modify, reduce or suspend those operations until either effective remedial actions can be taken or the weather conditions giving rise to the emissions have moderated.

### 6.3 SOIL STRIPPING, REMOVAL FROM STOCKPILES/BUNDS AND REINSTATEMENT

Soils handling is generally a short-lived seasonal activity and there is usually flexibility as to its timing.

Topsoil may give rise to airborne dust during stripping, removal from stockpiles/bunds and reinstatement operations, particularly as they are likely to be handled in a dry friable condition.

Subsoil/overburden tend to be damper and more cohesive than the topsoil and are less likely to be a significant source of dust. The significance of the potential impacts will be reduced by the short duration of soils handling in any one season.

---

<sup>2</sup> Process Guidance Note (PGN) 3/08 (12) *Statutory guidance for quarry processes* (Defra, 2012)

Unacceptable dust emissions can be controlled by minimising working of soil in very dry, windy conditions, by reducing drop heights at material transfer points and controlling vehicle speeds.

Soils handling shall be suspended when the wind conditions would be likely to result in visible dust being carried towards off-site receptors. Soil storage mounds shall be seeded as soon as practicable for stabilisation and to reduce the risk of wind-blow from exposed surfaces.

## 6.4 LOADING AND TIPPING

Loading and tipping operations within the working area are unlikely to result in visible dust emissions. However, drop heights shall be controlled during all loading and tipping operations, particularly of soils near sensitive boundaries to minimise the entrainment of dust into the atmosphere.

## 6.5 INERT WASTE FILL OPERATIONS

The proposed inert fill operations will deal principally with cohesive materials; consequently, the filling operations are unlikely to result in any significant dust emissions.

## 6.6 SITE HAULAGE

Haulage of soil materials across the Site is typically considered the greatest source of dust. The impact is increased over longer distances when speeds tend to be greater, and more effort is required to maintain a smooth damp running surface.

On site vehicle movements will be used to transport material to areas of restoration which has the potential to generate dust and some of which will take place adjacent to the site boundaries. Where practicable, all site traffic will keep to designated haul routes to reduce the creation and subsequent entrainment of fine material into the atmosphere.

Standard good practices for site haulage include:

- Avoiding abrupt changes in horizontal and vertical alignment;
- Regular clearing, grading and maintenance of haul routes;
- Keeping to the designated site speed limit;
- Ensuring that heavy plant is fitted with upswept exhausts and radiator fan shields;
- Evenly loading vehicles to avoid spillages; and
- Regular application of water, whether by bowser or by fixed sprays, in dry conditions.

All temporary haul roads will be constructed of clean hardcore or stone which will facilitate clearing and sweeping to assist in preventing the wind entrainment of any dry, fine material associated with the deposit of incoming waste.

Haul routes across the surface of the Site shall be located where possible in positions which are remote from sensitive site boundaries.

## 6.7 ROAD TRANSPORT

Vehicular access to Pode Hole Quarry is via the existing entrance from the A47 to the Site reception. The entrance road connects to the A47 with a T-junction arrangement. The entrance road is surfaced with concrete from the junction with the A47 to the waste reception area. All vehicles will be required to go through a wheel wash prior to exiting from the Site.

## 6.8 WIND BLOWN ACROSS BARE GROUND AND STOCKPILES

During dry conditions, wind-blown dust emissions are potentially significant and might be carried for a considerable distance when strong winds blow across large open areas of loose or bare ground. During soil stripping, wind-blown dust might be raised from the freshly exposed surface.

Strong winds may blow directly at the inert waste extraction face as prevailing winds blow from the southwest but, due to its inherent dampness, dust is only likely to be raised during prolonged dry weather and is unlikely to be in significant quantities.

The effects of wind blow across stripped surfaces, unpaved vehicle circulation areas, stockpiles and areas of bare ground will be managed by ensuring that:

- The extent of such areas is kept to a minimum;
- Loose materials are removed or treated, and
- Such areas are wetted down as necessary.

During dry conditions, unpaved circulation areas and the surfaces of stockpiles in the open will be watered using fixed sprays or a water bowser.

## 6.9 OTHER MATTERS

General matters and the management of the site can affect the likelihood of significant dust emissions. These include:

- The use of clean water for dust suppression to avoid recirculating fine material;
- High standards of housekeeping to minimise track-out and wind-blown dust; and
- Effective staff training in respect of the causes and prevention of dust.

## 7 MONITORING

---

### 7.1 DUST MONITORING

Due to the location of the Site with respect to off-Site receptors, it is proposed that dust monitoring is carried out during filling activities at the Site at the following locations:

- EMP1 – South-western corner of the Site;
- EMP2 – South-western corner of the Site;
- EMP3 – Northern boundary of the Site;
- EMP4 – North-eastern corner of the Site; and
- EMP5 – Southern boundary of the Site.

These monitoring locations are shown on **Drawing ESID10 – Monitoring and Extraction Plan, Appendix A**.

A visual assessment of deposited and airborne dust shall be made by the Site Manager or designated member of staff at a minimum frequency of once per week at the above locations. Assessment may also be made by a suitably qualified member of staff during the monitoring round of the leachate and gas monitoring points.

In addition, sampling of deposited dust will be undertaken on a quarterly basis, at the same locations over a 24-hour period. Monitoring will be carried out in accordance with technical guidance note M17 'Monitoring Particulate Matter in Ambient Air around Waste Facilities'. In the event that the results exceed a limit of 200 mg/m<sup>2</sup>/day, investigation will be made, and further control measures implemented if required.

### 7.2 PM<sub>10</sub> MONITORING

The potential impact of PM<sub>10</sub> can be determined by comparing the total predicted environmental concentration (PEC) of particulate matter estimated to arise from the proposed operations, with the Air Quality Standard annual mean objective of 40 µg/m<sup>3</sup>. The PEC can be determined by combining the existing background ambient concentration (AC) and the expected process contribution (PC). The background concentration for PM<sub>10</sub> at the nearest National Grid Reference (NGR) square to the Site (525500, 302500) as obtained from Defra's website (<https://uk-air.defra.gov.uk/data/laqm-background-home>) for 2025 is 14.03 µg/m<sup>3</sup>.

The IAQM minerals guidance (2016) states "If the long-term background PM10 concentration is less than 17 µg/m<sup>3</sup> there is little risk that the Process Contribution (PC) would lead to an exceedance of the annual-mean objective and such a finding can be put forward qualitatively, without the need for further consideration, in most cases." Based on this IAQM minerals guidance (2016) and given that the predicted background concentration is less than 17 µg/m<sup>3</sup>, it is concluded that there is little risk that the Process Contribution (PC) would lead to an exceedance of the annual mean objective, and it therefore is not considered that routine monitoring of PM<sub>10</sub> is required.

## 8 MAINTENANCE OF PLANT AND EQUIPMENT

---

Effective control of airborne dust emissions requires the maintenance and proper operation of all plant and equipment, including fixed and mobile dust extraction and suppression equipment. A programme of planned maintenance will be carried out on all plant and equipment in accordance with the manufacturers' recommendations to ensure that it operates at optimum efficiency.

Stocks of essential spares and consumable items will be held at the site or kept readily available for use at short notice.

Any malfunction or breakdown leading to abnormal emissions will be dealt with promptly and operations will be modified or suspended until normal working can be restored. All such malfunctions, and the actions taken, will be recorded in the site logbook.

## 9 SITE MANAGEMENT

---

The Site Manager shall exercise, either personally or by delegation to suitably trained and responsible staff, day-to-day control of the site. The Site Manager will be responsible for the satisfactory working of the whole site and for ensuring full compliance with the Dust Management Plan.

Staff at all levels shall receive the necessary training and instruction in their duties relating to all operations and the potential sources of dust emissions. Particular emphasis will be given to plant and equipment malfunctions and abnormal conditions.

The Site Manager shall ensure that customers and suppliers are aware of the need to comply with the provisions of this plan so far as they are relevant to their activities on site.

Any member of staff who fails to comply with the provisions of the dust management and monitoring plan shall be re-trained as necessary.

## 10 EMERGENCY RESPONSE

---

An emergency response procedure, to be followed in the event of a major dust emission, shall be kept at the site office. For the purposes of emergency response, major dust emissions will be defined as including:

- Visible dust crossing the site boundaries;
- Persistent fugitive dust from transport or plant movements; and/or
- Persistent wind-blown dust.

The contact details of key personnel will be listed in the procedure.

Should a major dust emission occur, then the following actions shall be taken:

- Site management / foreman will assess the ongoing activities to determine the likely cause of the dust emission.
- Should the Site management / foreman not be able to determine the source with 100% confidence, then the likely dust/particulate generating activity shall be halted.
- If the source is determined to be within the control of the Site, then the appropriate action in terms of dust/particulate abatement will be taken, which may include:
  - Investigate the source of the dust/particles to prevent a re-occurrence;
  - Suspend operations deemed to not be following best practice techniques and amend working procedures as required;
  - Use of additional dust control measures;
  - Logging findings within the site diary and notifying the Environment Agency as set out in the Environmental Permit.

If an effective abatement technique cannot be identified and implemented, and observed PM<sub>10</sub> levels remain above the action level for 6 consecutive, 5-minute mean readings (i.e. 25 minutes) concurrent with recorded wind directions suggesting that the source of particulate could be from the site activities, then operations should be suspended until measured PM concentrations drop below the action level of 75 µg/m<sup>3</sup> for 6 consecutive, 5-minute mean readings. Site staff will maintain continuous visual monitoring of potential dust sources and activities and proactively report observations to site management to minimise the potential for the escalation of dust emissions.

## 11 COMPLAINTS

---

All dust complaints shall be recorded and reported to the Site Manager or nominated deputy, who shall investigate the circumstances and ensure that the necessary corrective measures are taken. A prompt response will be made to the complainant and a record, including copies of all correspondence and telephone file notes, will be made in the complaints register.

The Environment Agency shall be notified of any dust complaint received by the Site or, conversely, the Environment Agency may notify PT-CE of any dust complaint which it may receive. PT-CE shall liaise with the Environment Agency in considering the findings of any subsequent investigation and any corrective measures which may have been taken.

In the event of any substantiated complaint, the effectiveness of the Dust Management Plan shall be reviewed.

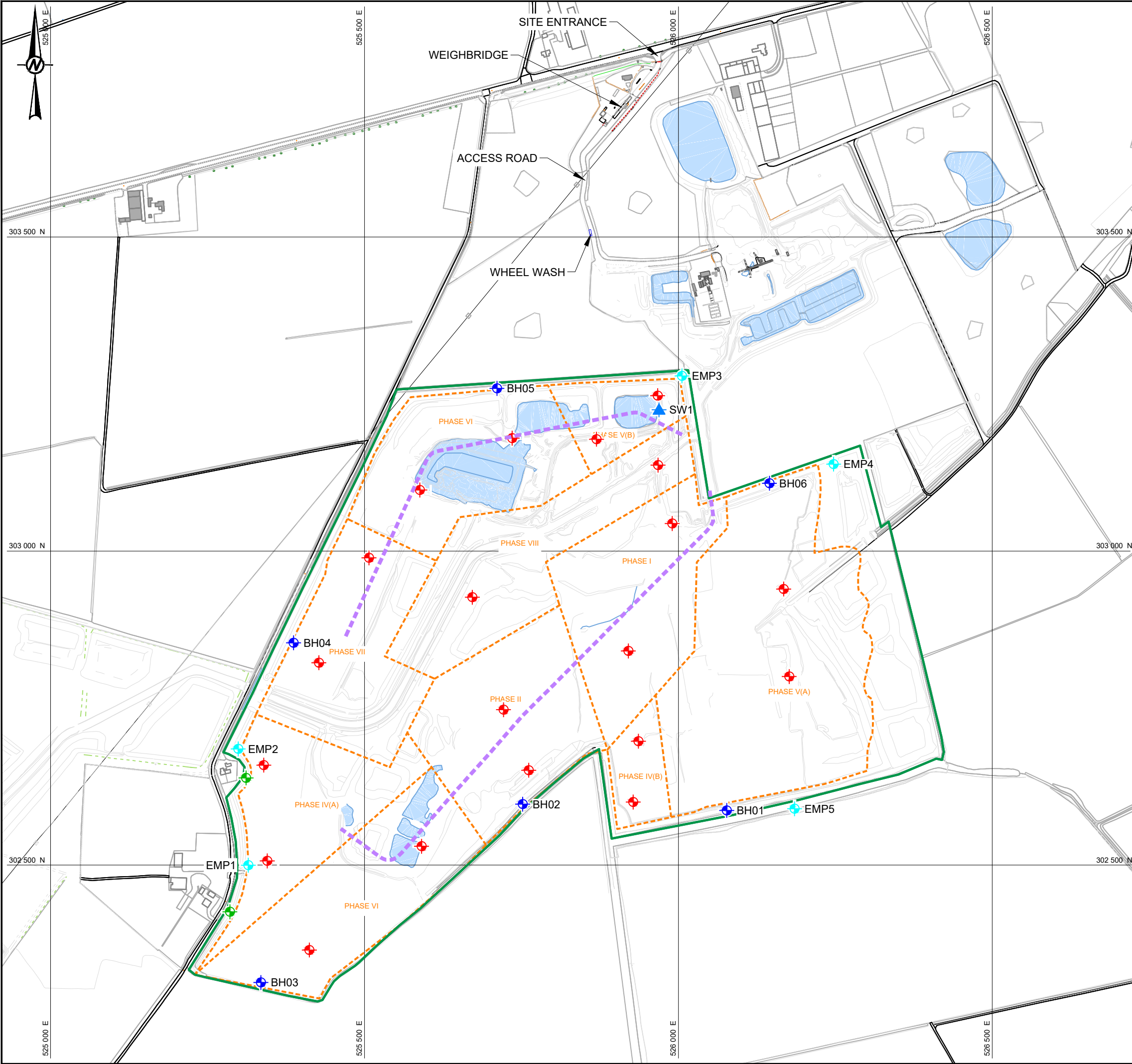
# Appendix A

## **DRAWINGS**

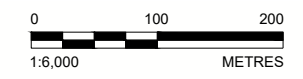




Path: \\ccp.gbrn.net\GBIT\minion\Golder\CTX\_Data\Bumle\End\CAD\SP7-CE\Pods\Hole Quarry\99\_PROJECTS\UK0038843.2142\1001\_ES\02\_PRODUCT\DWG\ | File Name: UK0038843.2142\_1001\_ES\_02010.dwg | Last Edited By: ukcs850 | Date: 2025-10-09 Time: 2:24:29 PM | Printed By: UKCS850 | Date: 2025-10-09 Time: 2:31:07 PM




- LEGEND**
- ENVIRONMENTAL PERMIT APPLICATION BOUNDARY
  - ◆ EXISTING GROUNDWATER MONITORING BOREHOLE
  - ◆ INDICATIVE IN-WASTE LANDFILL GAS MONITORING BOREHOLE
  - ◆ PROPOSED EXTERNAL GAS MONITORING BOREHOLE
  - ▲ PROPOSED SURFACE WATER MONITORING POINT
  - ◆ ENVIRONMENTAL MONITORING POINT
  - - - PHASE BOUNDARY
  - - - TEMPORARY HAUL ROAD



CLIENT  
PT-CE Ltd

PROJECT  
PODE HOLE QUARRY PERMIT APPLICATION

TITLE  
**MONITORING AND EXTRACTION POINT PLAN**

CONSULTANT	YYYY-MM-DD	2025-07-24
	DESIGNED	PH
	PREPARED	TS
	REVIEWED	PH
	APPROVED	NW

PROJECT NO. UK0038843.2142 1001\_ES\_0010      CONTROL      REV. A      DRAWING ESID10

25 mm IF THIS MEASUREMENT DOES NOT MATCH WHAT IS SHOWN, THE SHEET SIZE HAS BEEN MODIFIED FROM: ISO A3



Attenborough House, Browns Lane Business Park  
Stanton-on-the-Wolds  
Nottingham  
NG12 5BL

**wsp.com**

WSP UK Limited makes no warranties or guarantees, actual or implied, in relation to this report, or the ultimate commercial, technical, economic, or financial effect on the project to which it relates, and bears no responsibility or liability related to its use other than as set out in the contract under which it was supplied.