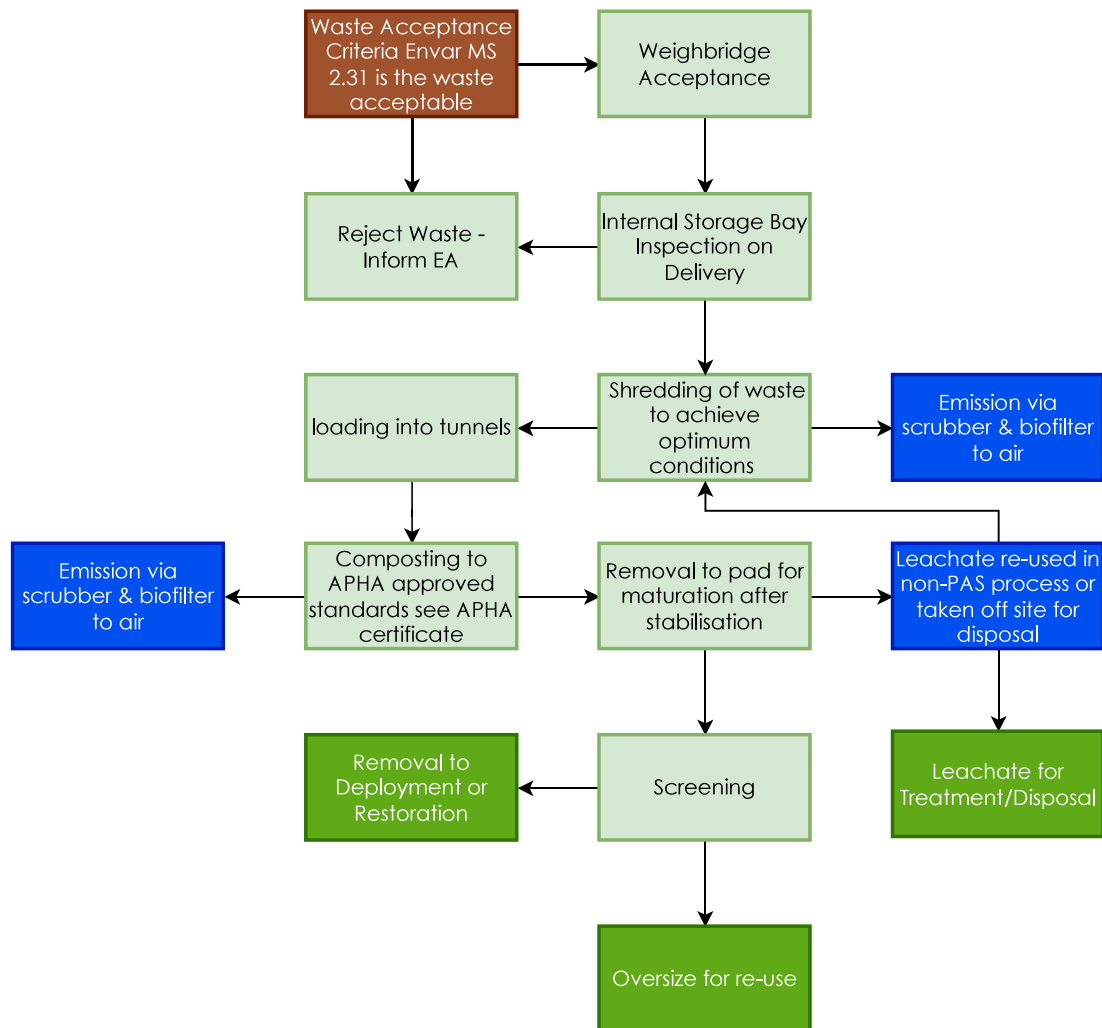




This process is subject to acceptance criteria as referenced in '**Envar MS 2.31**  
- **Waste Acceptance, Inspection, Quarantine and Rejection. V4**'

"To ensure that contamination in loads of deposited material is conforming to the site's Environmental Permits the site's legal requirements and voluntary commitments, in line with Envars' business plan are charged, weighed, stored, and accounted for appropriately."

### Non-Pas Composting

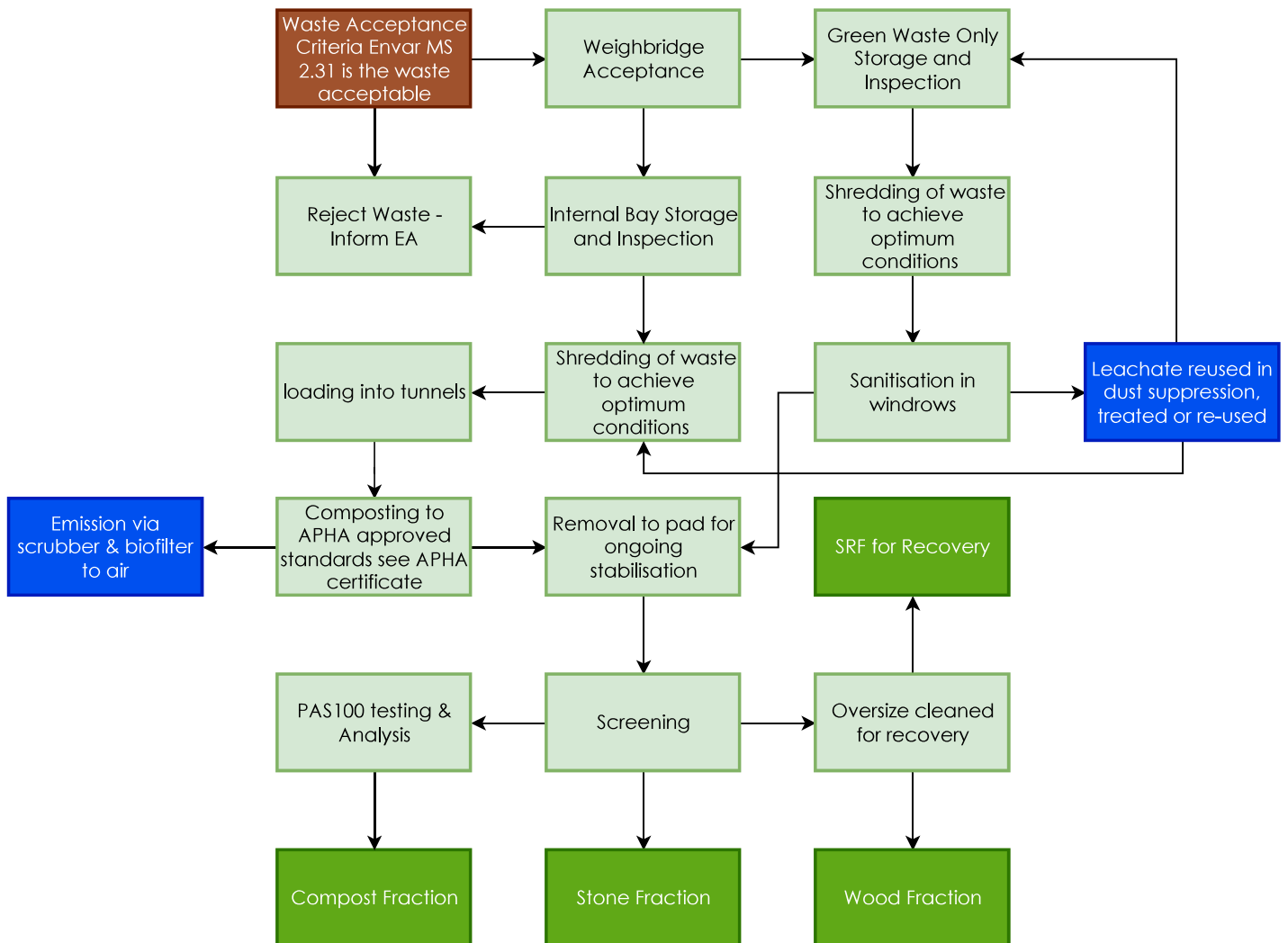




This process is subject to acceptance criteria as referenced in '**Envar MS 2.31 - Waste Acceptance, Inspection, Quarantine and Rejection. V4**'

"To ensure that contamination in loads of deposited material is conforming to the site's Environmental Permits the site's legal requirements and voluntary commitments, in line with Envars' business plan are charged, weighed, stored, and accounted for appropriately."

### PAS100 Composting





This process is subject to acceptance criteria as referenced in '**Envar MS 2.31 - Waste Acceptance, Inspection, Quarantine and Rejection. V4**'

"To ensure that contamination in loads of deposited material is conforming to the site's Environmental Permits the site's legal requirements and voluntary commitments, in line with Envars' business plan are charged, weighed, stored, and accounted for appropriately."

