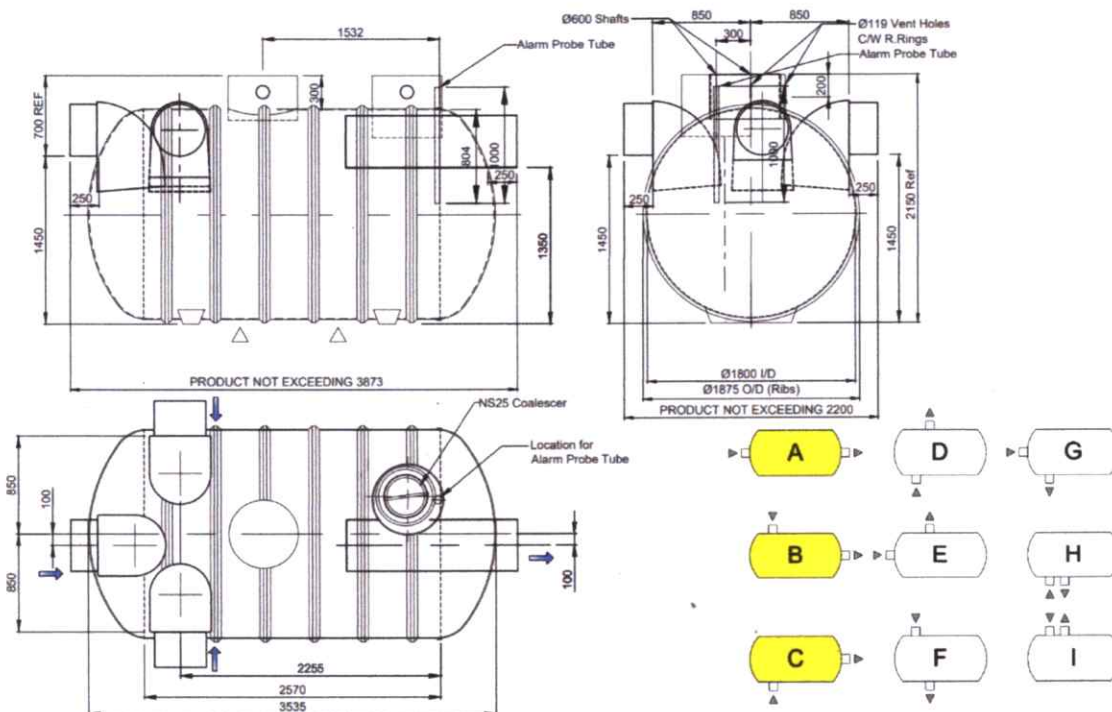


SPEL Stormceptor Class 1 by-pass separator specification sheet
Models with in/out orientation A-C



Tank specifications - re water table burial depth (see Technical Data Manual – installation section)	Standard / HCR
Inlet/outlet orientation A-C	A
Inlet size (mm dia.) 225 / 300 / 450	225mm Spigot
Outlet size (mm dia.) 225 / 300 / 450	225mm Spigot
Extension shafts in 500mm increments to suit dimension	500 mm
Oil Alarm Required	Yes / No
Silt Alarm Required	Yes / No
Coalescer guide rail system required?	Yes / No
Customer approval: Name: <i>W. DEACON</i> Date: <i>6/10/21</i>	Signature:

Water table & Burial Depth; The customer must check tank specification is compatible with ground water level (in winter) and burial depth. If in doubt refer to SPEL Data Manual – Installation section or contact SPEL Products Sales or Technical Department.	Model 325C1/SC	Internal Ref.	22982/001
		Date	05/10/21
DIMENSIONS ARE SUBJECT TO DIMENSIONAL TOLERANCES. If critical, check physically prior to installation.	Contract: Red Leaf Group Somerset Farm Adapt Biogas Order no: PO - 0060 Issue B	Serial No.	30500
		 Lancaster Road, Shrewsbury, Shropshire, SY1 3NQ, England Telephone: +44 (0)1743 445200 Fax: +44 (0)1743 465442	