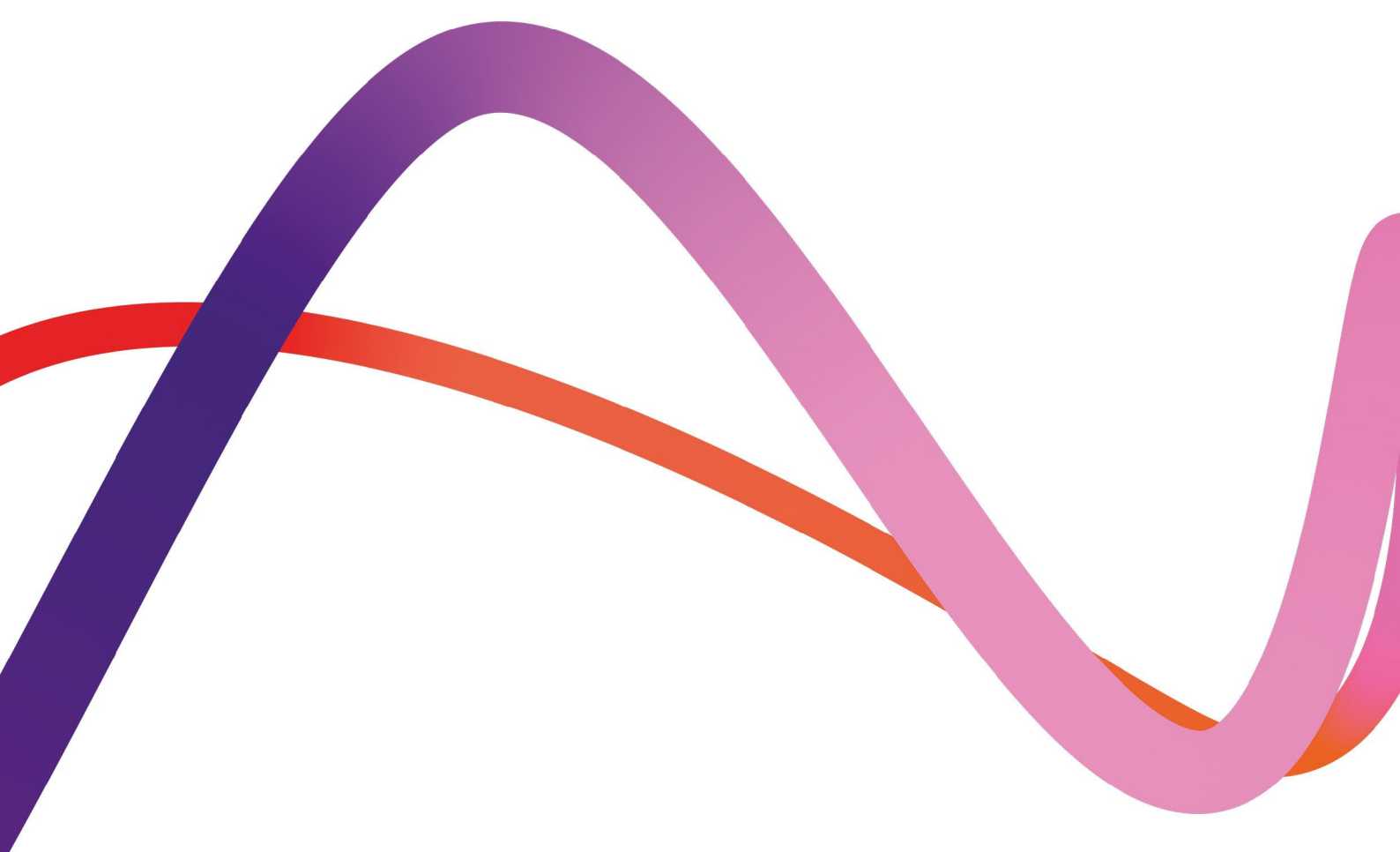


Medworth Energy from Waste Combined Heat and Power Facility



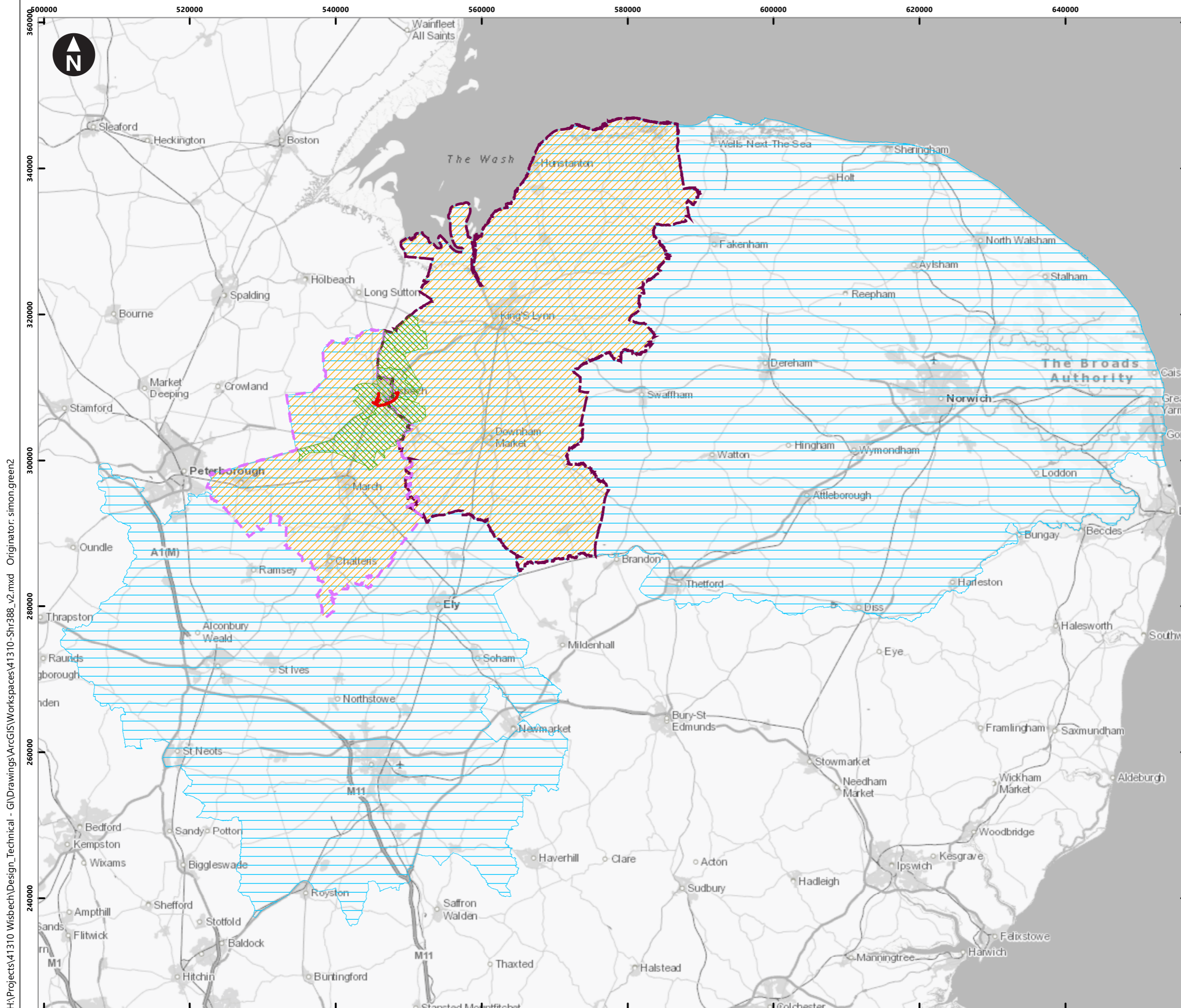
PINS ref. EN010110
Document Reference: Vol 6.3
Revision 1.0
June 2022








Environmental Statement Chapter 15 Socio economic, Tourism, Recreation and Land Use Figures

Regulation reference: The Infrastructure
Planning (Applications: Prescribed Forms
and Procedure) Regulations 2009
Regulation 5(2)(a)

**We inspire
with energy.**



Key

-  Order limits
- Study Area**
-  Local level - Medworth, Wisbech, Elm, Elmnet, Walsoken, West Walton and Walpole Wards
-  District level - Fenland District
-  District level - King's Lynn and West Norfolk Borough
-  County level - Cambridgeshire and Norfolk

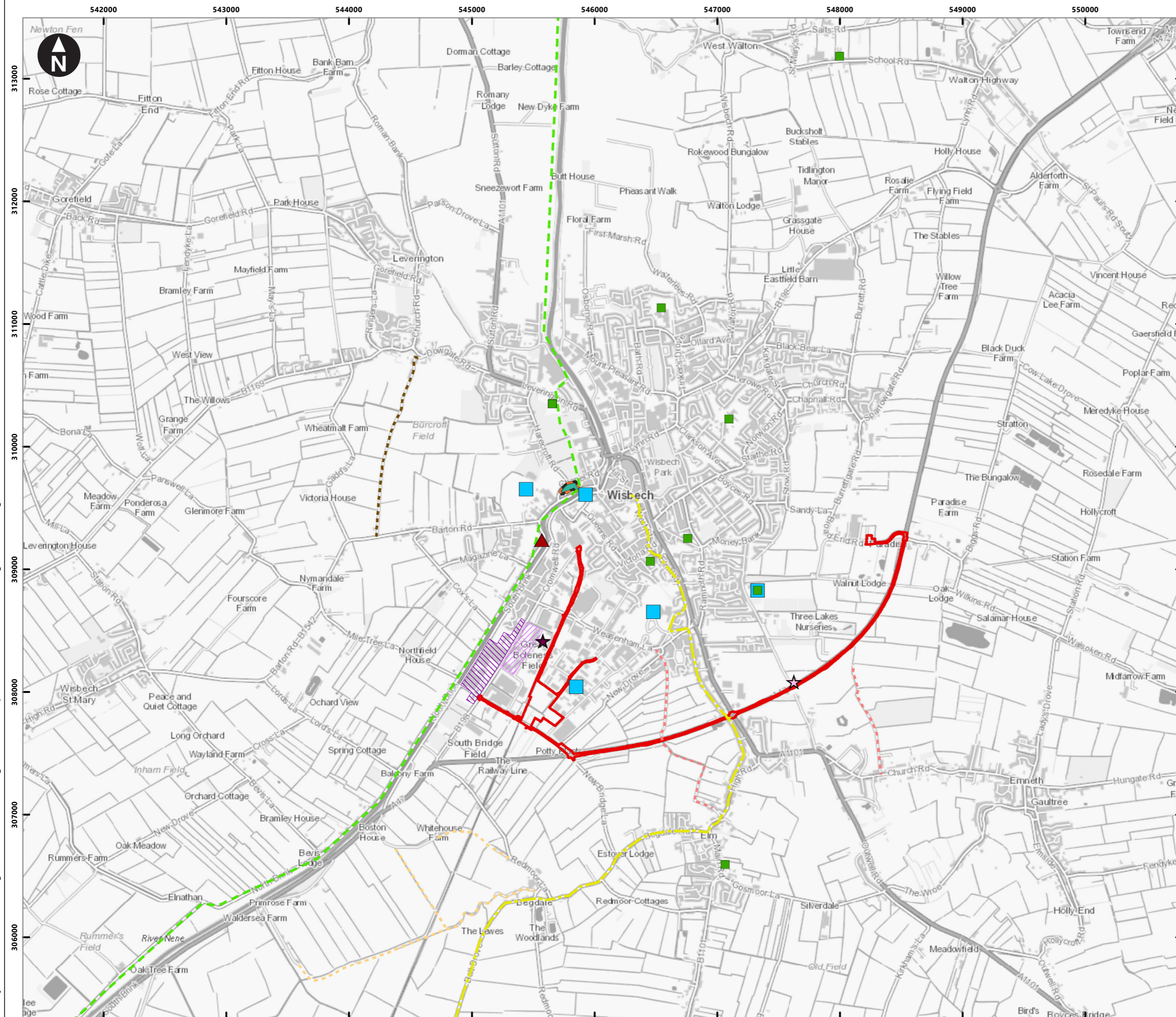
0 5,000 10,000 15,000 20,000 25,000 m
 Scale at A3: 1:500,000
 Contains OS data © Crown Copyright and database right 2020



Medworth CHP Limited
 Medworth Energy from Waste Combined Heat and Power Facility DCO
 Environmental Statement
 Chapter 15 - Socio-economic, Tourism, Recreation and Land Use
Figure 15.1
Socio-economic. Tourism, Recreation and Land Use Study Area

H:\Projects\41310 Wisbech\Design_Technical - G:\Drawings\ArcGIS\Workspaces\41310-Shr388_v2.mxd Originator: simon.green2

H:\Projects\41310 Wisbech\Design_Technical - GI\Drawings\ArcGIS\Workspaces\41310-Shr513.mxd Originator: simon.green2



Key

- Order limits
- Education facilities**
 - Primary School
 - High School
- Tourism and recreation**
 - Elgood's Brewery - Grade II Listed Building
 - Peckover House - Registered Park and Garden
- Long-distance footpaths and cycle routes**
 - Nene Valley Way
 - National Cycle Route 63
- PRoWs**
 - Halfpenny Lane
 - PRoW west of Begdale
 - The Still, Leverington
- Land uses**
 - Car wash
 - Wisbech Delivery Office
 - Belgrave Retail Park
 - Commercial, retail and leisure facilities along western side of Cromwell Road

0 250 500 750 1,000 1,250 1,500 1,750 m
Scale at A3: 1:30,000
Contains OS data © Crown Copyright and database right 2020



Medworth CHP Limited
Medworth Energy from Waste Combined Heat and Power Facility DCO
Environmental Statement
Chapter 15 - Socio-economic, Tourism, Recreation and Land Use
Figure 15.2
Location of Socio-economic, Tourism, Recreation and Land Use Static Receptors

