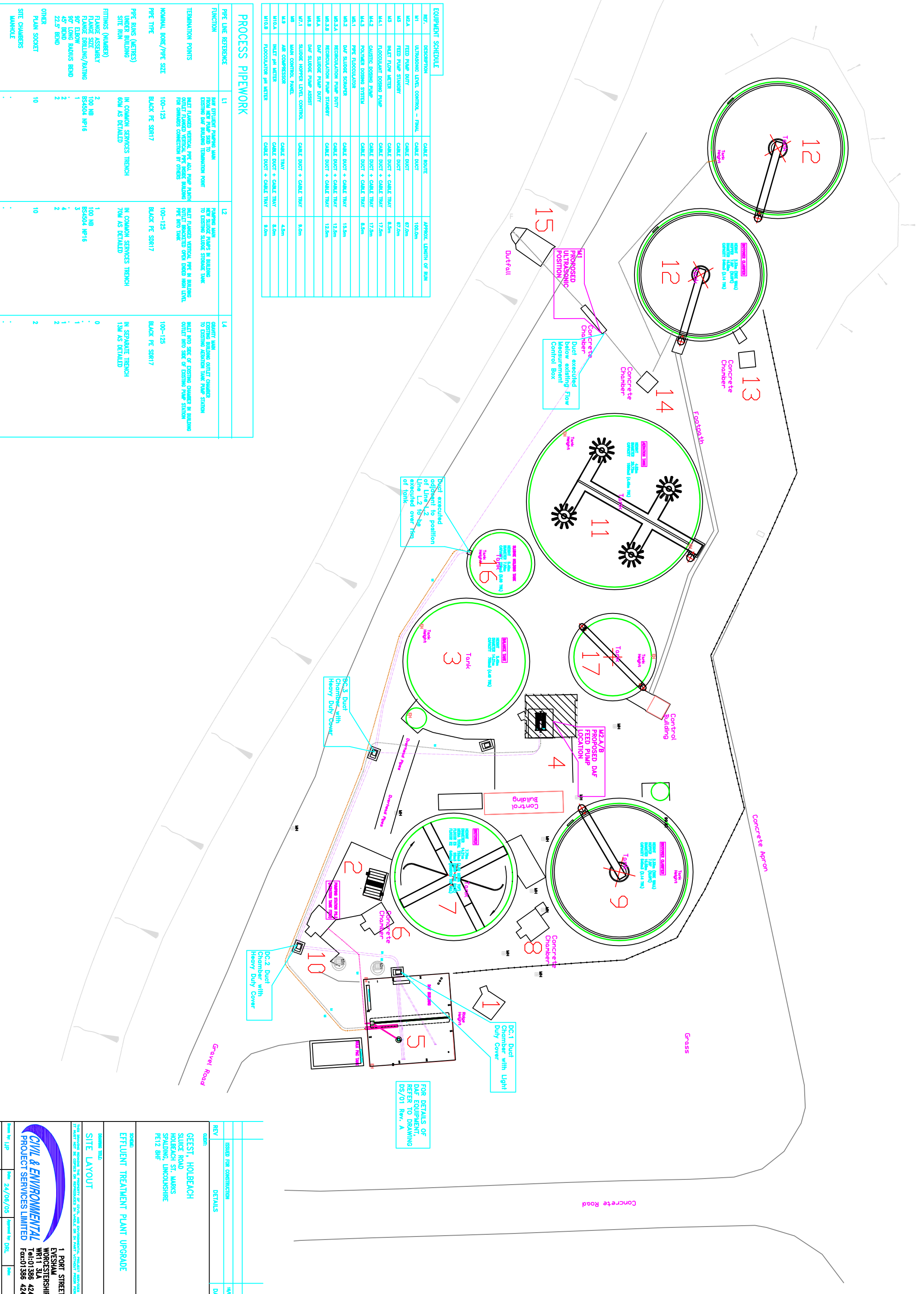


PIPE LINE REFERENCE	L1	L2	L4
FUNCTION	RAW EFFLUENT PUMPING, WITH EXISTING DAF BUILDING TERMINATION POINT	RAW EFFLUENT PUMPING, WITH EXISTING DAF BUILDING TERMINATION POINT	GRABBY BARR EXISTING DAF BUILDING TERMINATION POINT TO EXISTING AERATION TANK 'RAW' STATION
TERMINATION POINTS	MILET FLANGED VERTICAL PIPE, RAW PUMP OUTLET FLANGED VERTICAL PIPE, RAW PUMP FOR OVERHEAD CONNECTION BY OTHERS	MILET FLANGED VERTICAL PIPE IN BUILDING OUTLET, BACKLIFT OPEN DROD HIGH LEVEL, PIPE AND TANK	MILET AND SILENCE OF EXISTING CHAMBER IN BUILDING OUTLET INTO SILENCE OF EXISTING RAW STATION
NOMINAL BORE/PIPE SIZE	100-125	100-125	100-125
PIPE TYPE	BLACK PE SDR17	BLACK PE SDR17	BLACK PE SDR17
PIPE JOINS (LETTERS)	IN COMMON SERVICES TRENCH 60M AS DETAILED	IN COMMON SERVICES TRENCH 70M AS DETAILED	IN SEPARATE TRENCH 15M AS DETAILED
SILENCE BUILDINGS SITE IRON			
FITTINGS (NUMBERS)			
FLANGE ASSEMBLY	2	1	0
FLANGE SIZE	BS24504 NP16	BS24504 NP16	
90° ELBOW	1	3	1
90° LONG RADIUS BEND	2	4	1
45° BEND	2	2	2
22.5° BEND			
OTHER			
FLANGE ASSEMBLY	10	10	2
SITE CHANGERS			
MANHOLE			

REF.	DESCRIPTION	CABLE ROUTE	APPROX. LENGTH OF RUN
M1	ULTRASONIC LEVEL CONTROL - FINAL	CABLE DUCT	100.00m
M2A	FEED PUMP DUTY	CABLE DUCT	67.00m
M2B	FEED PUMP STANDBY	CABLE DUCT	67.00m
M3	MILET FLOW METERS	CABLE DUCT + CABLE TRAY	8.50m
M4.1	FLOCCULANT DOSING PUMP	CABLE DUCT + CABLE TRAY	17.50m
M4.2	CLUSTIC DOSING PUMP	CABLE DUCT + CABLE TRAY	17.50m
M4.3	POLYMER DOSING SYSTEM	CABLE DUCT + CABLE TRAY	8.50m
M5.1	PIPE FLOCCULATION	CABLE DUCT + CABLE TRAY	18.00m
M5.2	DAF SLUDGE SCRAVERS	CABLE DUCT + CABLE TRAY	12.50m
M5.3.A	REGULATION PUMP DUTY	CABLE DUCT + CABLE TRAY	12.50m
M5.3.B	REGULATION PUMP STANDBY	CABLE DUCT + CABLE TRAY	12.50m
M6.A	DAF SLUDGE PUMP DUTY	CABLE DUCT + CABLE TRAY	9.00m
M6.B	DAF SLUDGE PUMP ASSEMBLY	CABLE DUCT + CABLE TRAY	9.00m
M7.1	SLUDGE HOPPER LEVEL CONTROL	CABLE TRAY	4.50m
M8	SLAM CONTROL PANEL	CABLE TRAY	8.50m
M9	AIR COMPRESSION	CABLE TRAY	8.50m
M10.A	MILET pH METER	CABLE DUCT + CABLE TRAY	9.00m
M10.B	REGULATION pH METER	CABLE DUCT + CABLE TRAY	9.00m

PROCESS PIPEWORK



FOR DETAILS OF
DAF EQUIPMENT,
REFER TO DRAWING
DS/01 Rev. A

REV.	ISSUED FOR CONSTRUCTION	DETAILS	DATE

CLIENT:
GEEST, HOLBEACH
SLUCE ROAD
HOLBEACH ST. MARKS
SPALDING, LINCOLNSHIRE
PE12 8HF

SCHEDULE
EFFLUENT TREATMENT PLANT UPGRADE

SUBMITTAL TITLE
SITE LAYOUT

DATE: 24/06/05
DRAWING NO.: CT/03

CIVIL & ENVIRONMENTAL
PROJECT SERVICES LIMITED
1 PORT STREET
EYCSHAM
WORCESTERSHIRE
WR11 3BB
Tel: 01386 424004
Fax: 01386 424007

SCALE: 1:200
ORDER NO.: C25-002
DRAWING NO.: CT/03