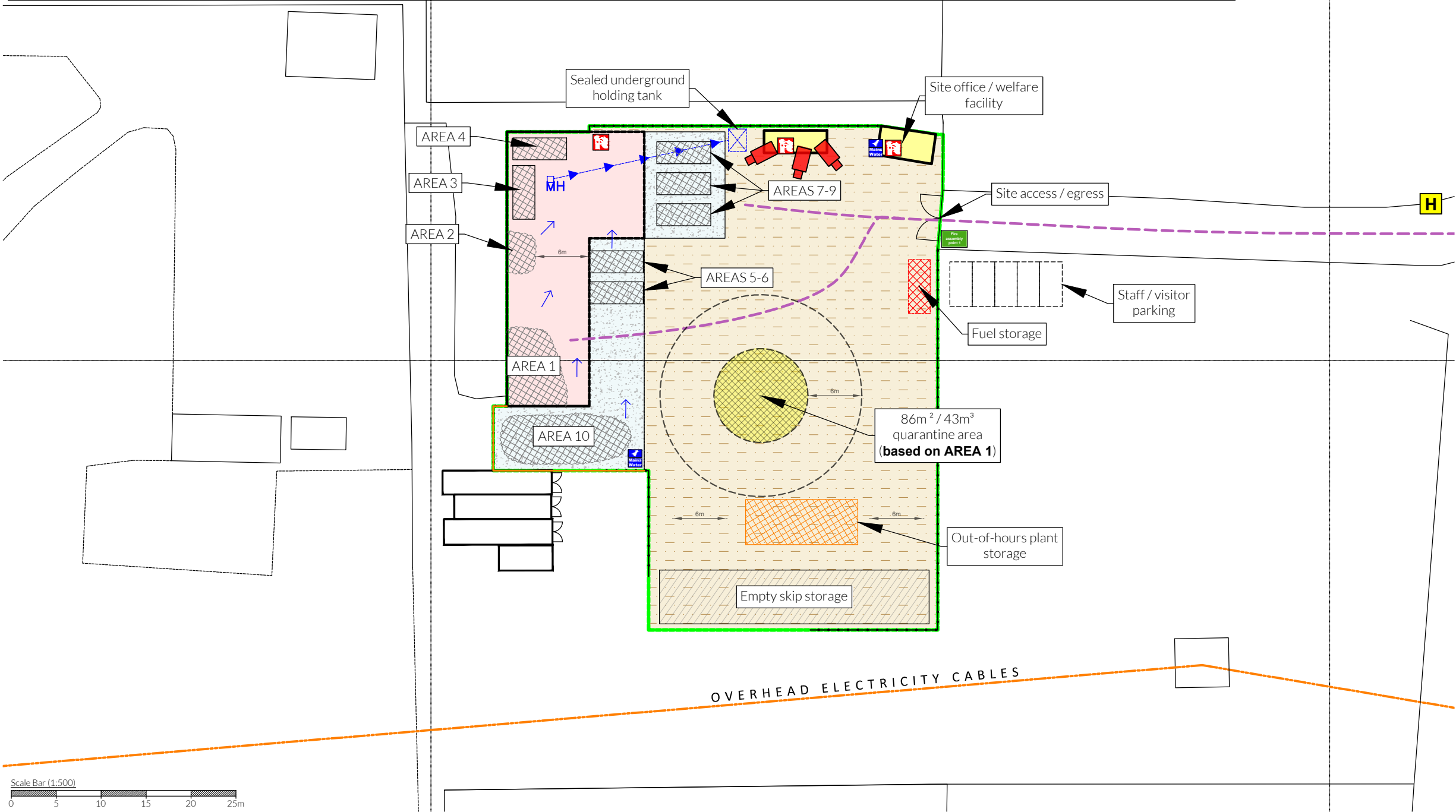


Storage Area Details											
Plan Ref	Description	Storage type	Containment	Height / width of firewall (m)	Max width of pile (m)	Max length of pile (m)	Max height of pile (m)	Approx. area (m2)	Conversion factor used	Approx. volume (m3)	Max storage time
AREA 1	Mixed waste reception (tipping), inspection and sorting area	Free-standing (unprocessed)	Open fronted waste transfer building	3 / 0.6	6.6	8.2	2	54	0.75	81	<5 days
AREA 2	Non-recyclable / bulky waste	Free-standing (unprocessed)	Open fronted waste transfer building	3 / 0.6	4.2	3.2	2	13	0.75	20	<2 weeks
AREA 3	Non-ferrous metals	Container (partly processed) sorted by hand or grab	Sealed moveable pallet boxes according to metal type	n/a	1	1.2	1	15	1	15 (per container)	<3 months
AREA 4	Plasterboard	Container (partly processed) sorted by hand or grab	Sealed moveable 20-cubic yard skip	n/a	6.1	2.44	2.62	15	1	39	<2 weeks
AREAS 5-9	Hand sorted recyclables i.e. wood, green waste, plastic, cardboard, residual waste etc.	partly processed sorted by hand or grab	Open topped, moveable 20-cubic yard skip	n/a	6.1	2.44	2.62	15	1	39	<2 weeks
AREA 10	Hardcore / rubble / inert soils and stones	Free-standing (partly processed) sorted by hand or grab	Free standing stockpile	n/a	5	8	3	15	0.333	15	<6 months



NOTES
Drawing for indication only. Reproduced with the permission of the controller of H.M.S.O. Crown copyright licence No. 100022432. This drawing is copyright and property of Oaktree Environmental Ltd.

REVISION HISTORY

Rev:	Date:	Init:	Description:
-	26.06.25	EG	Initial drawing

KEY:

- Permit boundary
- Waste storage areas
- Concrete surface
- Buildings (concrete floor)
- Hardstanding
- Site office / welfare facilities
- Quarantine area
- Surface water fall direction
- Mains water
- Fire alarm
- Fire fighting equipment
- CCTV
- Access route for emergency services
- Fire Hydrant

TITLE:

SITE LAYOUT & FIRE PLAN

CLIENT:

M G Skip Hire & Recycling Limited

PROJECT/SITE:

Four Acre Farm, South Fen Road, Bourne, Lincolnshire, PE10 0DL

SCALE @ A3:

1:500

CLIENT NO:

0994

JOB NO:

007

DRAWING NO:

FAF/0994/03

REV:

-

STATUS:

Issued

DATE:

26.06.25

DRAWN:

EG

CHECKED:

RS

