

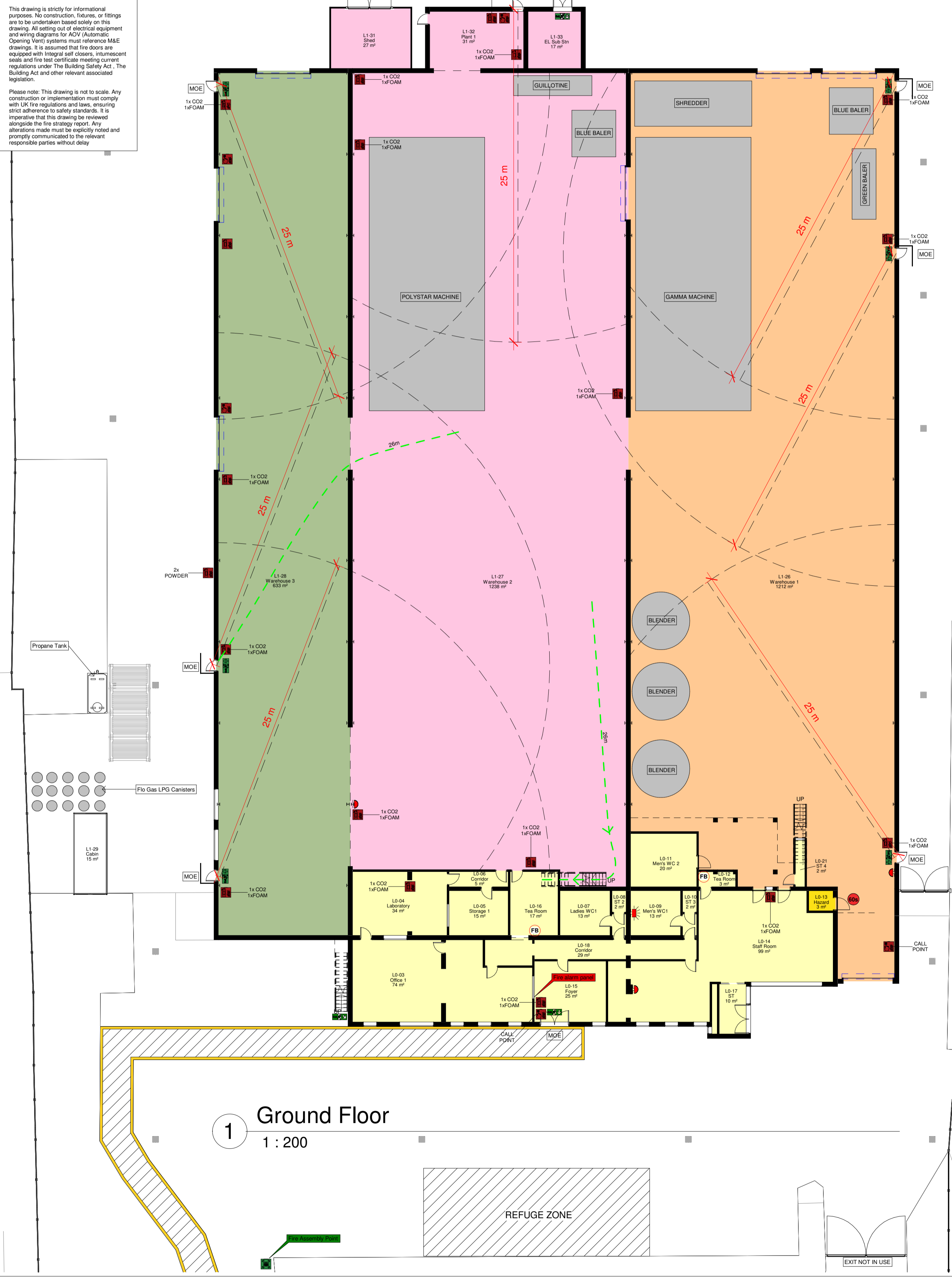
03/09/2023 BOSCOWELLE BROCKTON LIMITED & PE MA DESIGN CONSULTANCY LIMITED  
 File Name: C:\Users\pma\Documents\183 FENGATE\PE1\183 FENGATE PE1\183 FENGATE PE1\Fire Strategy\183 FENGATE PE1\Fire Strategy.dwg

- ### Fire Strategy Legend
- Fire alarm call point
  - Fire extinguishers
  - Fire assembly point
  - Illuminated fire exit direction
  - Means of escape door
  - Visual alarm
  - Alarm sounder
  - Fire blanket
  - 60 min certified FR doorset assembly with smoke seals
  - Fire escape route and distance

- ### Fire Alarm Zones
- Hazard
  - Zone 1
  - Zone 2
  - Zone 3
  - Zone 4
  - Zone 5
  - Zone 6

This drawing is strictly for informational purposes. No construction, fixtures, or fittings are to be undertaken based solely on this drawing. All setting out of electrical equipment and wiring diagrams for ADV (Automatic Opening Vents) systems must reference M&E drawings. It is assumed that fire doors are equipped with integral self-closers, intumescent seals and fire test certificate meeting current regulations under The Building Safety Act. The Building Act and other relevant associated legislation.

Please note: This drawing is not to scale. Any construction or implementation must comply with UK fire regulations and laws, ensuring strict adherence to safety standards. It is imperative that this drawing be reviewed alongside the fire strategy report. Any alterations made must be explicitly noted and promptly communicated to the relevant responsible parties without delay.



| Room Schedule |        |                   |           |                 |
|---------------|--------|-------------------|-----------|-----------------|
| Name          | Number | Area              | Occupancy | Fire Alarm Zone |
| Office 1      | L1-01  | 74 m <sup>2</sup> |           | Zone 1          |
| Laboratory    | L1-04  | 34 m <sup>2</sup> |           | Zone 1          |
| Storage 1     | L1-05  | 15 m <sup>2</sup> |           | Zone 1          |
| Corridor      | L1-06  | 9 m <sup>2</sup>  |           | Zone 1          |
| Ladies WC1    | L1-07  | 13 m <sup>2</sup> |           | Zone 1          |
| ST 2          | L1-08  | 2 m <sup>2</sup>  |           | Zone 1          |
| Men's WC1     | L1-09  | 13 m <sup>2</sup> |           | Zone 1          |
| ST 3          | L1-10  | 2 m <sup>2</sup>  |           | Zone 1          |
| Men's WC 2    | L1-11  | 20 m <sup>2</sup> |           | Zone 1          |
| Tea Room      | L1-12  | 3 m <sup>2</sup>  |           | Zone 1          |
| Hazard        | L1-13  | 3 m <sup>2</sup>  |           | Hazard          |
| Staff Room    | L1-14  | 99 m <sup>2</sup> |           | Zone 1          |
| Foyer         | L1-15  | 25 m <sup>2</sup> |           | Zone 1          |
| Tea Room      | L1-16  | 17 m <sup>2</sup> |           | Zone 1          |
| ST            | L1-17  | 10 m <sup>2</sup> |           | Zone 1          |
| Corridor      | L1-18  | 29 m <sup>2</sup> |           | Zone 1          |
| ST 4          | L1-21  | 2 m <sup>2</sup>  |           | Zone 1          |
| Office        | L1-01  | 36 m <sup>2</sup> |           | Zone 6          |

| Room Schedule      |        |                     |           |                 |
|--------------------|--------|---------------------|-----------|-----------------|
| Name               | Number | Area                | Occupancy | Fire Alarm Zone |
| Plant              | L1-02  | 30 m <sup>2</sup>   |           | Zone 6          |
| CCTV / Engineering | L1-03  | 34 m <sup>2</sup>   |           | Zone 5          |
| Meeting Room       | L1-04  | 36 m <sup>2</sup>   |           | Zone 5          |
| Training           | L1-05  | 17 m <sup>2</sup>   |           | Zone 5          |
| Lab Store          | L1-06  | 29 m <sup>2</sup>   |           | Zone 5          |
| Storage Deck       | L1-07  | 57 m <sup>2</sup>   |           | Zone 5          |
| Corridor           | L1-08  | 13 m <sup>2</sup>   |           | Zone 5          |
| Store              | L1-09  | 30 m <sup>2</sup>   |           | Zone 6          |
| Corridor           | L1-15  | Not Placed          |           | Zone 1          |
| Warehouse 1        | L1-26  | 1212 m <sup>2</sup> |           | Zone 4          |
| Warehouse 2        | L1-27  | 1238 m <sup>2</sup> |           | Zone 3          |
| Warehouse 3        | L1-28  | 633 m <sup>2</sup>  |           | Zone 2          |
| ST 4               | L1-30  | Not Placed          |           | Zone 4          |
| Shed               | L1-31  | 27 m <sup>2</sup>   |           | Zone 3          |
| Plant 1            | L1-32  | 31 m <sup>2</sup>   |           | Zone 3          |
| EL Sub Stn         | L1-33  | 17 m <sup>2</sup>   |           | Zone 3          |
| ST                 | L1-34  | Not Placed          |           | Zone 1          |

**00 | 00 | FLOOR**

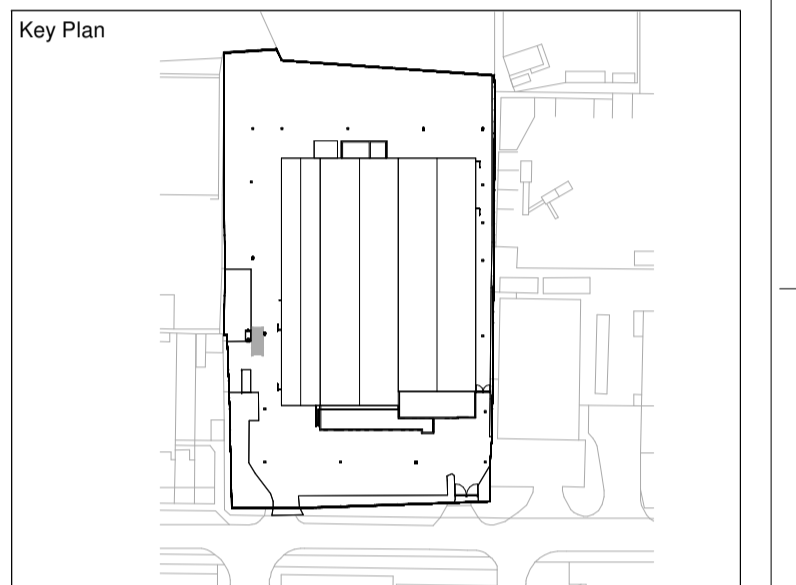
01-

**00 | 00 | WALL**

01-

**00 | 00 | CEILING**

01-



**Notes**

Construction Risks: Maintenance/Cleaning Risks: Demolition/Installation Risks:

In addition to the hazards/risks normally associated with the types of work detailed on this drawing take note of the above. It is assumed that all works will be carried out by a competent contractor working, where appropriate, to an appropriate method statement.

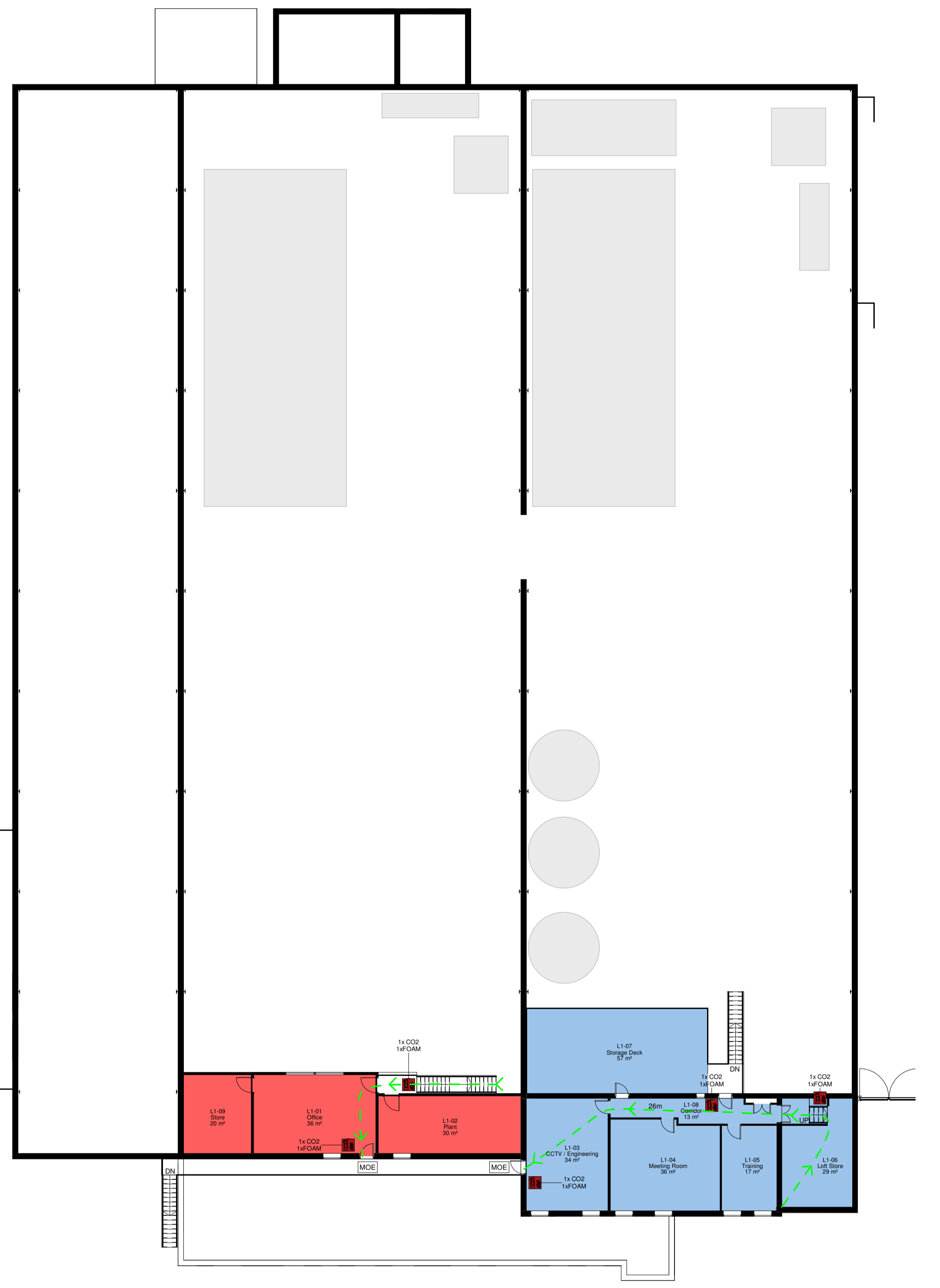
Safety Health and Environmental Information Box

THIS DRAWING IS THE PROPERTY OF PE MA DESIGN CONSULTANCY LTD & MORTEL PROPERTY MANAGEMENT LTD AND IS ISSUED ON THE CONDITION THAT IT IS NOT REPRODUCED, DISCLOSED OR COPIED TO ANY UNAUTHORISED PERSON IN WHOLE OR PART WITHOUT PRIOR WRITTEN CONSENT.

NO DIMENSIONS ARE TO BE SCALED FROM THIS DRAWING. ALL DIMENSIONS STATED MUST BE VERIFIED ON SITE. THE ARCHITECT MUST BE ADVISED OF ANY DISCREPANCIES PRIOR TO ANY ITEM OF WORK BEING PUT IN HAND.

THIS DRAWING MUST BE READ TOGETHER WITH THE SPECIFICATION, BILL OF QUANTITIES AND RELATED DRAWINGS.

|                     |                            |          |
|---------------------|----------------------------|----------|
| Scale: As Indicated | Project No: #####          | 3119     |
| Client Approval:    | A - Approved               |          |
| Rev:                | B - Approved with Comments |          |
| Rev:                | C - Do Not Use             |          |
| Sheet No: A1        | PRELIMINARY                |          |
| Rev ID              | Issue Date                 | Issue By |
| Rev ID              | Issue Date                 | Issue By |
| Rev ID              | Issue Date                 | Issue By |



**MORTEL PROPERTY MANAGEMENT LTD**  
124 The Glass Pavilion, 12-14, The Arcade, Peterborough, PE1 1UA

**PE MA DESIGN CONSULTANCY**  
PE MA Design Consultancy Limited  
T: +44 (0)2030173010 E: info@pe-ma-design.co.uk

**FIRE EVACUATION PLAN**  
Unrated  
Recycle For Future 183 FENGATE, Peterborough, PE1 5PE

|         |      |        |              |            |      |       |         |
|---------|------|--------|--------------|------------|------|-------|---------|
| Project | 3119 | Design | BSC          | Drawn      | ZZ   | Sheet | 00 XX A |
| Issue   | A1   | Scale  | As Indicated | Project No | 3119 | Rev   |         |