

| NOZZLE REF. | QTY. | ITEM No. | SIZE   | FLANGE                    | ITEM No. | SIZE | NECK                    | STND. OUT | WELD AS DETAIL | WELD TO VESSEL AS DETAIL | WELD SIZE (Ø/RS) | COMPENSATION PADS | Y' DIA | T THK | Y' WELD | SERVICE         |
|-------------|------|----------|--------|---------------------------|----------|------|-------------------------|-----------|----------------|--------------------------|------------------|-------------------|--------|-------|---------|-----------------|
| N1          | 1    |          | 4"     | RF MACHINED PAD           |          |      |                         | 6         | -              | T                        | 5/5              |                   |        |       |         | FILL CONNECTION |
| N2          | 1    |          | 4"     | RFSO FLANGE CLASS 150LB   |          | 4"   | SCH 40 PIPE             | 100       | F              | J                        | 5/5              |                   |        |       |         | VENT            |
| N3          | 1    |          | 4"     | RFSO FLANGE CLASS 150LB   |          | 4"   | SCH 40 PIPE             | -         | F              | J                        | 5/5              |                   |        |       |         | OUTLET          |
| N7          | 1    |          | 3/4"   | BSP FULL SOCKET           |          | 1"   | SCH 40 PIPE + PLUG      | 50        | -              | J                        | 3/3              |                   |        |       |         | LEVEL PROBE     |
| N8          | 1    |          | 1 1/2" | BSP FULL SOCKET           |          | 1"   | SEE SHEET 2 FOR DETAILS | -         | -              | J                        | 3/3              |                   |        |       |         | LEVEL PROBE     |
| N9          | 2    |          | 1"     | BSP FULL SOCKET           |          | 1"   | BSP, SQUARE HEAD PLUG   | -         | -              | S/O                      | 3/3              |                   |        |       |         | DRAIN + PLUG    |
| M1          | 1    |          | 24"    | FORT VALE SINGLE ARM ASSY |          |      | SUPPLIED WITH NECK      | 80        | -              | J                        | 3/3              |                   |        |       |         | MANWAY          |

**GENERAL NOTES**

- 1. ALL DIMENSIONS ARE IN MILLIMETRES, UNLESS OTHERWISE STATED.
- 2. SEE MATERIAL SCHEDULE FOR SPECIFICATIONS ON INDIVIDUAL ITEMS.
- 3. FLANGE BOLT HOLES TO BE SET OFF VESSEL CENTRE LINES.
- 4. ALL FLANGES ARE TO STD. BS 1560/A.S.A. B16.5 UNLESS OTHERWISE STATED.
- 5. ALL PADS TO HAVE VENT HOLES, DRILLED 5.0mm DIAMETER. REINFORCEMENT PADS THAT COVER WELDS MUST HAVE TEST HOLES. TEST HOLES TO BE DRILLED & TAPPED 1/4" BSP, ON MEAN DIAMETER OF PAD. HOLE TO BE SET ON VESSEL CENTRE LINES. AFTER WELDING PNEUMATICALLY TEST PAD TO 1.03 Bar (15 psi) FOR LEAK CHECK.
- 6. ALL OPENINGS TO BE FITTED WITH TRANSPORT BLANKS.
- 7. SEE QUALITY ASSURANCE DOCUMENTATION FOR APPROPRIATE WELDING CONSUMABLES.

VERTICAL SEAM IN STRAKE

VERTICAL SEAM IN STRAKE

**CZ COOKSON AND ZINN (PTL) LTD.**  
HADLEIGH, SUFFOLK, UK  
Tel: +44 (0)1473 825200

JOB No: 3619/20    DATE: \_\_\_\_\_

NOMINAL CAPACITY: 54,000 LITRES

ACTUAL CAPACITY: 55755 LITRES

BRITISH STANDARD: GEP

TEST PR. Bar: 0.345 AIR    HYD.

DESIGN PRESSURE: ATMOSPHERE Bar

**DETAIL OF NAMEPLATE FITTED TO BUND COMPARTMENT (FULL SIZE)**

**DO NOT SCALE - IF IN DOUBT ASK !**

**REFERENCE DRAWINGS**

| SHEET | DESCRIPTION               | DATE         |
|-------|---------------------------|--------------|
| 2     | BUND & SKID GENERAL ARRGT | A0/3619/20-2 |

| REV. | DESCRIPTION OF CHANGE             | DRAWN BY<br>SIGNED DATE | CHECKED BY<br>SIGNED DATE | APPROVED BY<br>SIGNED DATE |
|------|-----------------------------------|-------------------------|---------------------------|----------------------------|
| O    | FOR APPROVAL                      | J. Deaves<br>15.03.2004 | S. Deighton<br>17.03.2004 |                            |
| A    | N10 (DISCHARGE) REMOVED BY CLIENT | J. Deaves<br>22.03.2004 |                           |                            |

**DESIGN DATA**

DESIGN CODE: GOOD ENGINEERING PRACTICE

|                        |                       |              |
|------------------------|-----------------------|--------------|
| DESIGN PRESSURE:       | INTERNAL: ATMOSPHERIC | EXTERNAL:    |
| DESIGN TEMPERATURE:    | INTERNAL: AMBIENT °C  | EXTERNAL: °C |
| OPERATING PRESSURE:    | INTERNAL: ATMOSPHERIC | EXTERNAL:    |
| OPERATING TEMPERATURE: | INTERNAL: AMBIENT °C  | EXTERNAL: °C |

AIR TEST PRESSURE: TANK = 0.345 BAR (5 PS), BUND = WATER FILL

CONTENTS: FUEL OIL

SPECIFIC GRAVITY: DESIGN 1    ACTUAL 0.82

CORROSION ALLOWANCE: NIL mm    VOLUME: 54,956 m³

WIND SPEED: m/s    Sa    Sb    Sc

INSPECTION BY: COOKSON AND ZINN (PTL) LTD /

**COIL/JACKET DESIGN DATA**

DESIGN PRESSURE: NONE

DESIGN TEMPERATURE: NONE °C

OPERATING PRESSURE: NONE

OPERATING TEMPERATURE: NONE °C

CORROSION ALLOWANCE: mm    TEST PRESSURE:

**SURFACE FINISH & INSULATION**

INTERNAL: CLEAN, DRY, SELF COLOUR

EXTERNAL: TANK/BUND (INT & EXT) & LADDER

BLAST CLEAN Sa 2.5  
1 COAT EPOXY PRIMER INTERCOAT 200 EPA213/EP4240 DFT 75 BUFF  
1 COAT EPOXY MID INTERMEDIATE INTERCOAT 420 LIGHT GREY DFT 125  
1 COAT POLYURETHANE GLOSS INTERTHANE 990 DFT 50  
TO BS381C REF 221 BRILLIANT GREEN  
TOTAL DFT 250µ (MIN)

INSULATION: NONE

**GENERAL MATERIAL SPECIFICATION (SEE NOTE 2.)**

|                                |                      |
|--------------------------------|----------------------|
| SHELLS/HEADS:                  | BS EN10025 S275 JR   |
| REINFORCING PLATES:            | BS EN10025 S275 JR   |
| NOZZLE NECK PIPES:             | A106 GRADE B         |
| FORGED FLANGES/COVERS:         | A 105                |
| NOZZLE/FLANGE PLATES:          | -                    |
| WELDED FITTINGS:               | BS 1640              |
| CRADLES:                       | BS EN10025 S275 JR   |
| LIFT/ LUGS:                    | BS EN10025 S275 JR   |
| ATTACHMENTS INTERNAL/EXTERNAL: | -                    |
| NAMEPLATE:                     | ALUMINIUM SEE DETAIL |
| LADDERS/HANDRAILING:           | BS EN10025 S275      |

|              |           |                           |
|--------------|-----------|---------------------------|
| BOLTING:     | INTERNAL: | EXTERNAL: BS.4190 8.8 B2P |
| COIL/JACKET: |           |                           |
| GASKETS:     |           | NITRILE RUBBER            |

**NON-DESTRUCTIVE TESTING**

|              |      |
|--------------|------|
| RADIOGRAPHY: | NONE |
| DYEPEN:      | NONE |
| ULTRASONIC:  | NONE |
| M.P.I.       | NONE |

**WEIGHT**

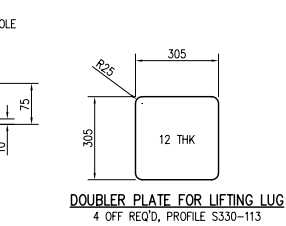
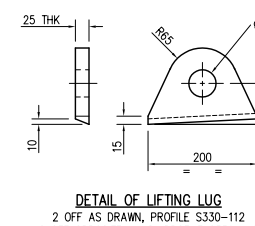
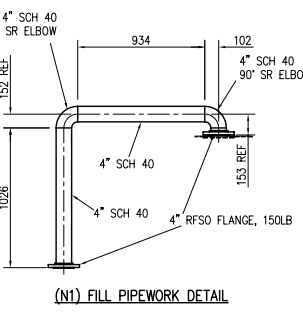
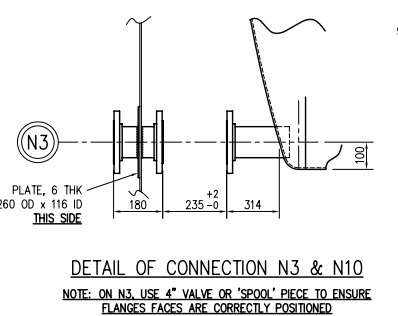
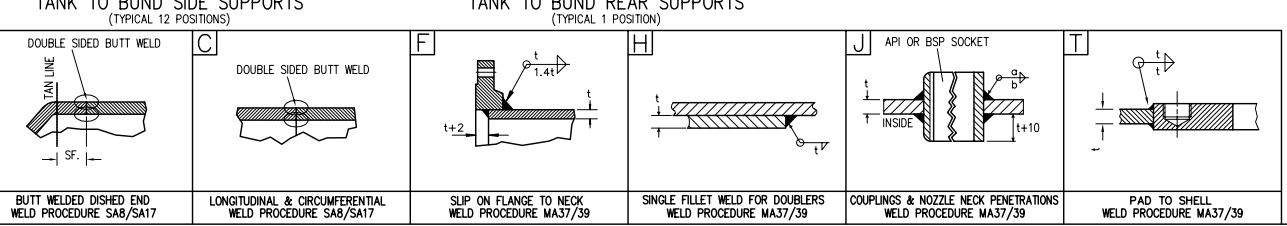
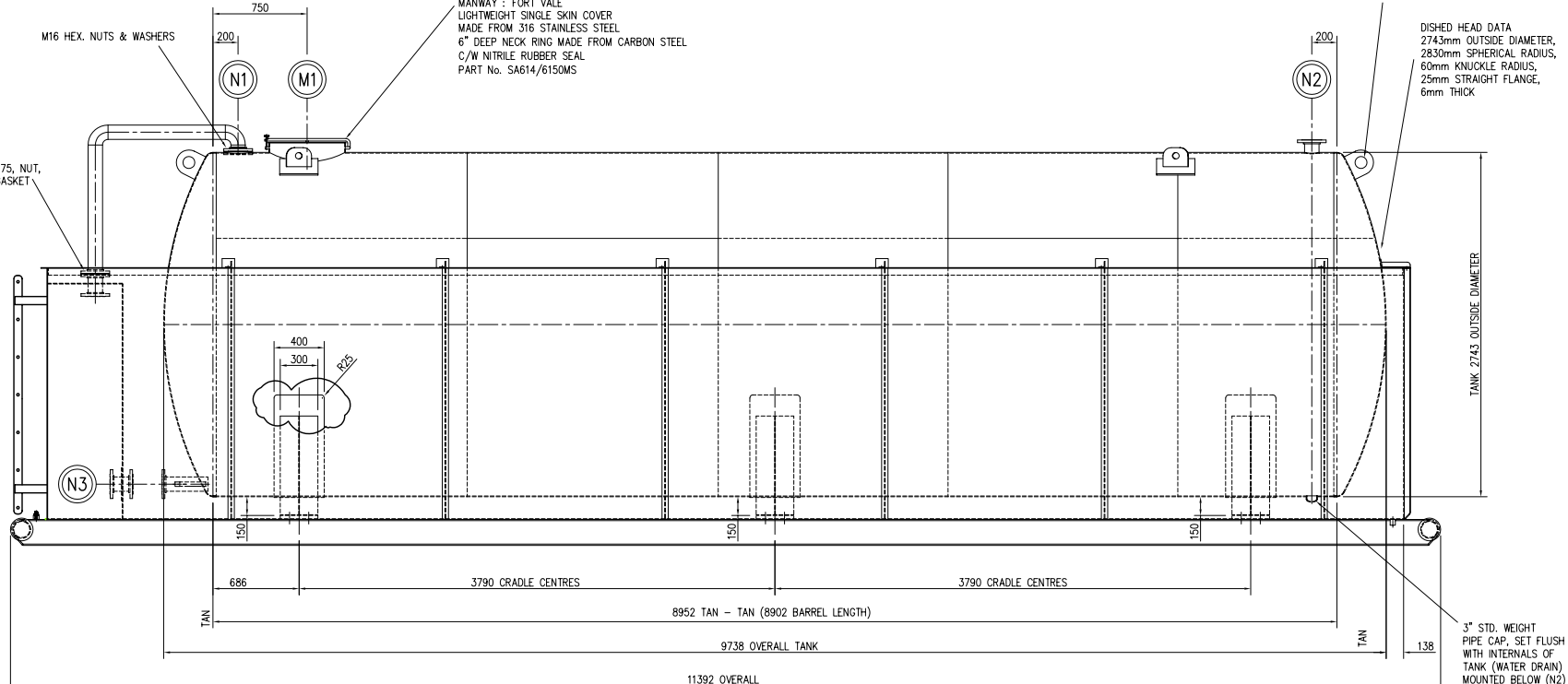
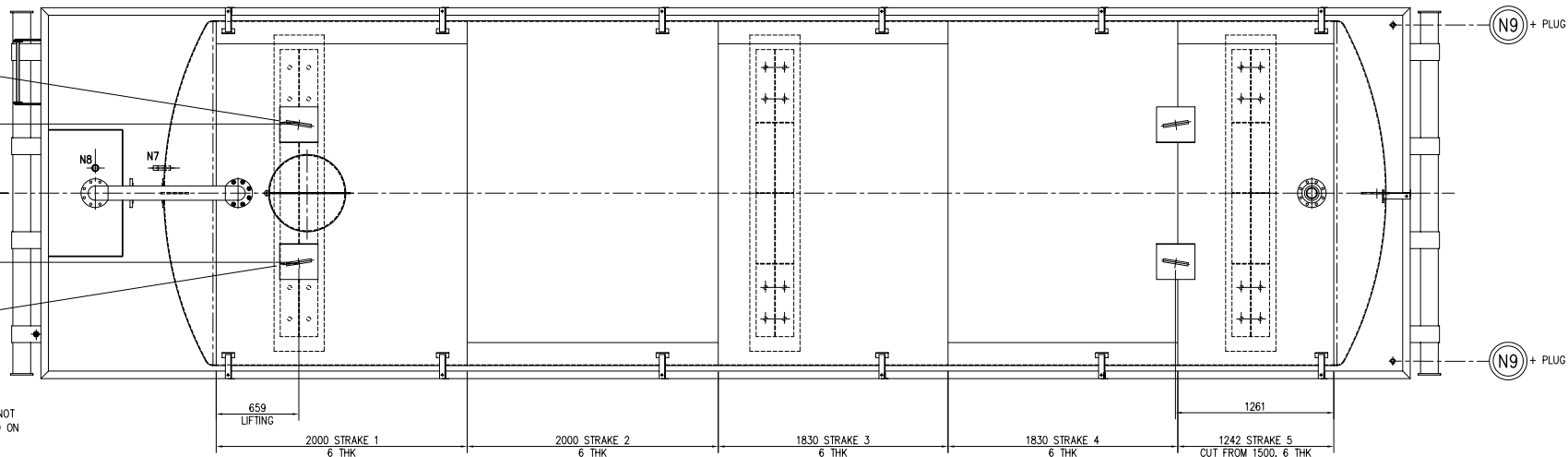
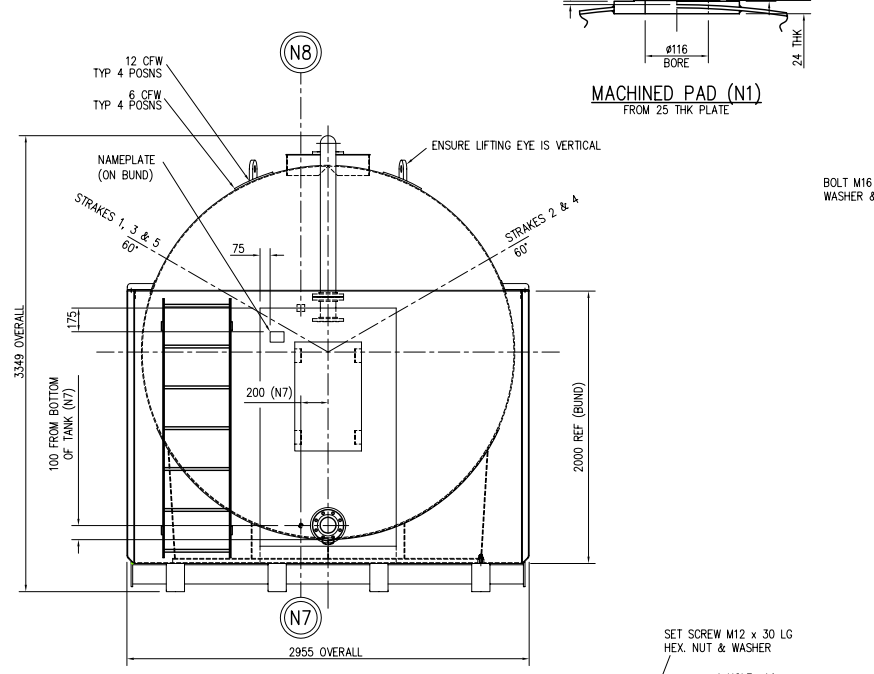
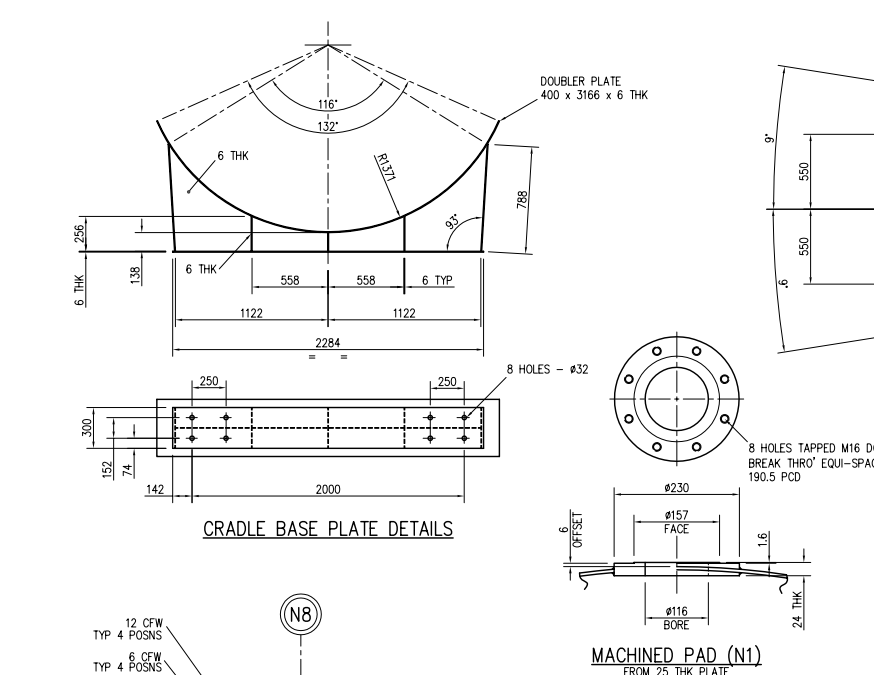
|        |           |              |          |       |      |
|--------|-----------|--------------|----------|-------|------|
| EMPTY: | 12,000 Kg | OPERATIONAL: | 57719 Kg | TEST: | - Kg |
|--------|-----------|--------------|----------|-------|------|

**HEAT TREATMENT**

|                          |      |
|--------------------------|------|
| STRESS RELIEVED/P.W.H.T: | NONE |
| OTHER HEAT TREATMENTS:   | NONE |
| NORMALISING:             | NONE |

Copyright    COOKSON AND ZINN (PTL) LIMITED Confidential

This drawing is the property of COOKSON AND ZINN (PTL) LTD. and is subject to return upon request. The drawing includes confidential proprietary information and is loaned in confidence with the understanding that it is not to be copied or reproduced without express permission, and that it will not be used adversely to COOKSON AND ZINN (PTL) LTD. All patent rights are reserved.



Client: ATI TANK HIRE LTD

Client Purchase Order No. -    Item No. MR398/MR399

Cookson and Zinn Job No. 3619/20

DESCRIPTION: HORIZONTAL CYLINDRICAL SINGLE COMP TANK, IN OPEN TOP BUND, TANK Ø2743 x 9738, 54,000 LTR NOM BUND 10800 x 2843 x 2000 HIGH

SCALE: 1:20    DRAWING No. A0/3619/20-1

THIRD ANGLE PROJECTION

REVISIONS: A