

DUST & EMISSIONS MANAGEMENT PLAN

The Former Coal Yard, Thrupp Lane, Abingdon, Oxfordshire, OX14 3NG

Oxford Skip Hire Ltd

Version:	1.0	Date:	08 December 2025		
Doc. Ref:	2895-THR-DEMP	Author(s):	EG	Checked:	CP
Client No:	2895	Job No:	015		

Oaktree Environmental Ltd, Lime House, 2 Road Two, Winsford, Cheshire, CW7 3QZ
Tel: 01606 558833 | E-Mail: sales@oaktree-environmental.co.uk | Web: www.oaktree-environmental.co.uk

Registered in the UK | Company Number: 4850754

© Oaktree Environmental Ltd – The unauthorised copying or reproduction of this document (or part thereof) is strictly prohibited



Oaktree Environmental

Waste, Planning & Environmental Consultants



Document History:

Version	Issue date	Author	Checked	Description
1.0	08/12/2025	EG	CP	Document issue

Contents

Document History:	i
Contents	ii
List of Tables	iv
List of Appendices:	v
1 Introduction	1
1.1 General.....	1
1.2 Content of the Dust & Emissions Management Plan	2
1.3 Responsibility for Implementation of the DEMP	2
1.4 Reviewing and monitoring this DEMP.....	3
1.5 Relevant Legislation.....	3
1.6 Hours of Operation.....	4
2 Sensitive Receptors	5
2.1 Meteorology.....	5
2.2 Receptors.....	6
2.3 Other Dust and Emission Sources	7
3 Site Operations	8
3.1 Waste Deliveries & Acceptance	8
3.2 Site Infrastructure	9
3.3 Potential Dust Emissions.....	9
3.4 Overview of Site Operations.....	12
3.5 Mobile Plant and Equipment.....	13
4 Dust Management & Mitigation.....	14
4.1 Sources of Fugitive Dust / Emissions	14
4.2 Control Measures (general/staff training/daily inspections).....	14
4.3 Housekeeping Schedule	15
4.4 Control Measures (boundary fencing / containment)	16
4.5 Control Measures – site surfacing.....	16
4.6 Control Measures - vehicle movements	17
4.7 Control Measures – site suppression	18
4.8 Control Measures – wheel wash / wash down area	19
4.9 Control Measures – water supply.....	19
4.10 Control Measures – processing of waste.....	19
4.11 Control Measures – storage of waste	20
4.12 Control Measures – vehicle movements and mobile plant	20
4.13 Control Measures - loading and unloading vehicles	20
4.14 Control Measures - Process Monitoring.....	21
5 Dust Management Risk Assessment Model	22
5.1 Fundamental Considerations	22
5.2 Pathway	22
5.3 Consequences.....	22
5.4 Effects of consequences.....	23
5.5 Risk estimation and evaluation (probability/frequency of occurrence of hazard).....	23
5.6 Risk Assessment Outcome (combination of probability & consequence).....	24

5.7	Risk Assessment Table.....	25
6	Monitoring and Contingency Measures	30
6.1	Monitoring and Recording.....	30
6.2	Staff Shortages / Human Error	31
6.3	Weather Conditions.....	31
6.4	Out-of-hours Monitoring	33
6.5	Operational/Power failure	33
7	Reporting and Complaints Response	35
7.1	Reporting of Complaints.....	35
7.2	Liaison with Neighbours	36

List of Tables

Table 2.1 - Sensitive Receptors.....	6
Table 3.1 – EWC Codes with Dust Potential.....	9
Table 3.2 - Plant & Equipment.....	13
Table 4.1 – Dust emission source table.....	14
Table 5.1 – Consequences	22
Table 5.2 – Potential effects.....	23
Table 5.3 – Likelihood	23
Table 5.4 – Risk assessment outcome.....	24
Table 5.5 – Source, Pathway, Receptor Routes	26

List of Appendices:

Appendix I - Drawings

Drawing No. 2895-THR-02 – Permit Boundary Plan

Drawing No. 2895-THR-03 - Site Layout & Fire Plan

Drawing No. 2895-THR-04 – Receptors Plan

Appendix II Inspection Checklist

Appendix III - Complaints Recording Form

Appendix IV - Dust Monitoring Form

1 Introduction

1.1 General

- 1.1.1 Oaktree Environmental Ltd have been instructed by Oxford Skip Hire Ltd (the operator) to prepare this Dust & Emissions Management Plan (DEMP).
- 1.1.2 This DEMP assesses the risk of dust associated with the storage and treatment of waste at The Former Coal Yard, Thrupp Lane, Abingdon, Oxfordshire, OX14 3NG and provides mitigation and control measures implemented in relation to dust from waste operations undertaken at the site.
- 1.1.3 The permit boundary is illustrated in green on Drawing No. 2895-THR-02 Permit Boundary Plan. All reference to 'the site' in this DEMP refers to the associated operations, infrastructure, plant, and equipment within this boundary.
- 1.1.4 The site is operated in accordance with Environmental Permit (EP) Ref. KB3104CQ. This DEMP has been produced to accompany a permit variation application.
- 1.1.5 The site is operated as a household, commercial and industrial (HCI) waste transfer station with physical treatment facility (PTF). The operator accepts non-hazardous HCI waste and construction, demolition and excavation (CDE) waste which have the potential to produce dust emissions.
- 1.1.6 Treatment activities undertaken on site consist of the following:
- a) Sorting (with loading shovel/360° excavator or by hand).
 - b) Manual separation (by picking line).
 - c) Mechanical separation (including overband magnets and density separator).
 - d) Screening (by using appropriate mechanical screening plant / trommel).
 - e) Storage (prior to removal).

1.2 Content of the Dust & Emissions Management Plan

- 1.2.1 This DEMP provides detailed information on the sources, risks, and mitigation measures relating to the potential of dust emissions from operations undertaken on site. This DEMP has been prepared in accordance with Environment Agency guidance "Control and monitor emissions for your environmental permit" last updated 11 June 2025.
- 1.2.2 This DEMP will allow the operator to implement an action plan should the site operatives detect the presence of airborne dust escaping beyond the site boundary, receive complaints from receptors.
- 1.2.3 In addition to this DEMP the site is managed and operated in accordance with a fully comprehensive Environmental Management System (EMS).
- 1.2.4 A copy of the DEMP will be kept on site at all times and made available to all staff.

1.3 Responsibility for Implementation of the DEMP

- 1.3.1 Ultimately this site manager is responsible for the implementation of this DEMP and for ensuring the mitigation strategies outlined in this management plan are in place and adhered to. Where the site manager is unavailable to oversee the implementation of dust suppression and mitigation strategies, a suitably experienced site operative or the technically competent manager (TCM) is delegated responsible.
- 1.3.2 All staff members have received the necessary training to deliver dust suppression measures and understand the contents and requirements detailed within this DEMP. Staff will undergo refresher training every 12 months or in the event of a dust complaint / issue or the implementation of operational changes.

1.4 Reviewing and monitoring this DEMP

1.4.1 This DEMP will be due for review two years from the date of approval or when a change in operation is deemed to have a potential effect on increasing dust emissions which could include any of the following:

- a) Changes to operations (additional treatment activities).
- b) Following a report or incident of dust emissions beyond the permit boundary.
- c) Development of site infrastructure (new buildings etc).
- d) Additional dusty waste streams accepted and stored on site.
- e) Increases in waste volumes stored on site.

1.4.2 As outlined in section 1.3 it is the site managers responsibility for monitoring and implementing the requirements of this DEMP.

1.5 Relevant Legislation

Air Quality Management Area (AQMA)

1.5.1 The system of local air quality management (LAQM) was introduced under the Environment Act 1995. LAQM requires local authorities to periodically review and assess the current and future quality of air in their areas. Where it is determined that an air quality objective is not likely to be met within the relevant time period, the authority must designate an AQMA.

1.5.2 The site is not located within an AQMA.

Low Emission Zone (LEZ)

1.5.3 LEZ's are areas that have restrictions on the type and age of vehicles permitted in it. This prevents high level of pollution emitting vehicles from entering and operating within the zone with the aim of improving air quality. High polluting vehicles are required to pay a charge to enter the zone.

1.5.4 The site is not located within a low emission zone.

1.6 Hours of Operation

- 1.6.1 The site will be open during the following hours for the delivery, receipt, and processing of waste:

Monday to Friday	07:30 – 17:00
Saturday	07:30 – 13:00
Sundays, Bank/Public holidays	Closed

- 1.6.2 The only activities on site which will be permitted outside of these hours are onsite maintenance works, emergency deliveries of waste/plant/machinery and general office use.
- 1.6.3 During times where the site is closed or not in operation, the site will be locked and secured to prevent unauthorised access.

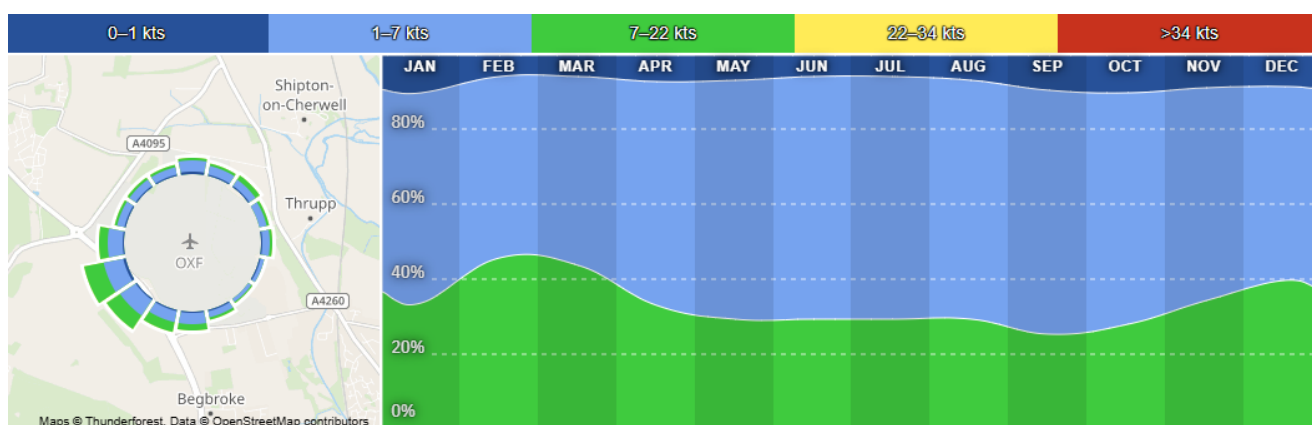
2 Sensitive Receptors

2.1 Meteorology

2.1.1 Unlike many other atmospheric pollutants, dust generation is highly influenced by weather conditions. The prevailing meteorological conditions at any site depend on a range of factors, including its position relative to broader macroclimatic patterns and more localised microclimatic effects. Among these, wind direction and speed are the most significant factors influencing dust dispersion and movement.

2.1.2 Wind speed and direction data have been obtained from London Oxford Airport weather station which is considered to be representative of the typical conditions at the site. Daily recorded data for the period between 04/2015 – 10/2025 indicates that the predominant wind direction is from the west south-west, see Figure 2.1 below.

Figure 2.1 - Windrose from London Oxford Airport



2.2 Receptors

- 2.2.1 A Receptor Plan has been prepared to illustrate the location of receptors within 1km of the site, see Appendix I, Drawing No. 2895-THR-04 Receptor Plan.
- 2.2.2 As outlined in section 2.1.2 above, the predominant wind is from the west south-west blowing towards receptors in the east north-east. Table 2.1 details the direction and distance from the boundary of the site to the boundary of receptors considered to be sensitive to dust within 1km of the site.

Table 2.1 - Sensitive Receptors

Receptor	Direction from Site	Approx distance from the site boundary to the receptor boundary (m)
Commercial / Industrial		
AJH Vehicle Repairs	East	0
H&S Fencing and Sheds	East	40
Residential Dwellings		
Thrupp Lane	East	50
Drysdale Close	North	195
Audlett Drive	West	370
Care homes (residential)		
n/a	n/a	n/a
Schools		
n/a	n/a	n/a
Watercourses / Surface Water Features		
Radley Lakes	South	580
Infrastructure (major roads and transport links)		
Great Western Railway Line between Culham and Radley	East	645
Ecological sites		
n/a	n/a	n/a
Recreational		
n/a	n/a	n/a
Scheduled Monuments		
Settlement Site N of Wick Hall	West	0

2.3 Other Dust and Emission Sources

- 2.3.1 It is considered there will be a natural production of dust from surrounding agricultural activities and farms. In particular the 'Fen Blows' which is the incidence of very strong winds, when it is not uncommon for soils from agricultural fields to be blown onto adjacent land.
- 2.3.2 Surrounding roads have the potential to produce dust from vehicles and maintenance issues i.e. potholes.

3 Site Operations

3.1 Waste Deliveries & Acceptance

- 3.1.1 Strict Waste acceptance procedures will be implemented on site to ensure that only suitable waste is accepted, which comprises of only those waste codes detailed in the EP. Waste acceptance procedures will ensure that wastes will not comprise solely or mainly of dust, powders, or loose fibres.
- 3.1.2 Waste will be delivered onto / depart from site primarily by the operators own vehicles (skip lorries). The movement of vehicles on site has the potential to cause dust emissions, particularly in dry and windy conditions. A 5mph speed limit and the minimisation of vehicle movements will be enforced on site to reduce the amount of dust generated by vehicle wheels.
- 3.1.3 All vehicles entering / exiting the site will be sheeted to minimise the likelihood of dust emissions. Loaded vehicles that are not sheeted will not be allowed to enter the site. Vehicles delivering waste will predominantly comprise skip wagons collected from householders or builders/other tradesman on behalf of householders.
- 3.1.4 Any third-party deliveries to the site will be advised that all loads must be suitably sheeted.
- 3.1.5 Vehicles entering the site will be visually inspected prior to unloading to ensure that loads comprising solely dust, powders, or loose fibres are not accepted.
- 3.1.6 During the visual inspection prior to tipping, loads which have the potential to emit dust will be dampened down if required before tipping, this does not apply to all loads and will be dependent on weather conditions i.e. hot and dry or high winds and the site managers judgment.

3.2 Site Infrastructure

3.2.1 Infrastructure on site is illustrated on Drawing No. 2895-THR-04. The drawing illustrates the following areas on site:

- a) Different surfaces i.e impermeable surfaces, hardstanding etc.
- b) Height/type of perimeter fencing.
- c) Reception and storage area of waste.
- d) Location of fixed plant/equipment i.e. picking line, trommel / screener.
- e) Locations of mains water points.
- f) Locations of dust mitigation techniques.

3.3 Potential Dust Emissions

Waste Codes

3.3.1 Waste types listed in Table 3.1 are those authorised to be accepted at the site that have the highest potential to produce dust emissions. The EWC codes highlighted in red are the waste types accepted at the site on a frequent/daily basis.

Table 3.1 – EWC Codes with Dust Potential

EUROPEAN WASTE CATALOGUE - COMMISSION DECISION 2000/532/EC	
CODE	WASTE TYPE
01	WASTES RESULTING FROM EXPLORATION, MINING, QUARRYING, AND PHYSICAL AND CHEMICAL TREATMENT OF MINERALS
01 01	wastes from mineral excavation
01 01 01	wastes from mineral metalliferous excavation
01 01 02	wastes from mineral non-metalliferous excavation
01 04	wastes from physical and chemical processing of non-metalliferous minerals
01 04 08	waste gravel and crushed rocks other than those mentioned in 01 04 07
01 04 09	waste sand and clays
01 04 13	wastes from stone cutting and sawing other than those mentioned in 01 04 07
02	WASTES FROM AGRICULTURE, HORTICULTURE, AQUACULTURE, FORESTRY, HUNTING AND FISHING, FOOD PREPARATION AND PROCESSING

EUROPEAN WASTE CATALOGUE - COMMISSION DECISION 2000/532/EC	
CODE	WASTE TYPE
02 01	wastes from agriculture, horticulture, aquaculture, forestry, hunting and fishing, food preparation and processing
02 01 01	Soil from cleaning and washing vegetables
02 03	wastes from fruit, vegetables, cereals, edible oils, cocoa, coffee, tea and tobacco preparation and processing; conserve production; yeast and yeast extract production, molasses preparation and fermentation
02 03 01	soil from cleaning and washing vegetables
02 04	wastes from sugar processing
02 04 01	soil from cleaning and washing beet
03	WASTES FROM WOOD PROCESSING AND THE PRODUCTION OF PANELS AND FURNITURE PULP, PAPER AND CARDBOARD
03 01	wastes from wood processing and the production of panels and furniture
03 01 05	sawdust, shavings, cuttings, wood, particle board and veneer other than those mentioned in 03 01 04
10	WASTES FROM THERMAL PROCESSES
10 09	wastes from casting of ferrous pieces
10 09 03	furnace slag
10 10	wastes from casting of non-ferrous pieces
10 10 03	furnace slag
10 12	wastes from the manufacture of ceramic goods, bricks, tiles and construction products
10 12 08	waste ceramics, bricks, tiles and construction products (after thermal processing)
10 13	wastes from manufacture of cement, lime and plaster and articles and products made from them
10 13 11	wastes from cement-based composite materials other than those mentioned in 10 13 09
10 13 14	waste concrete
12	WASTES FROM SHAPING AND PHYSICAL AND MECHANICAL SURFACE TREATMENT OF METALS AND PLASTICS
12 01	wastes from shaping and physical and mechanical surface treatment of metals and plastics
12 01 01	ferrous metal filings and turnings
12 01 03	non-ferrous metal filings and turnings
17	CONSTRUCTION AND DEMOLITION WASTES (INCLUDING EXCAVATED SOIL FROM CONTAMINATED SITES)
17 01	concrete, bricks, tiles and ceramics
17 01 01	concrete
17 01 02	bricks
17 01 03	tiles and ceramics
17 01 07	mixture of concrete, bricks, tiles and ceramics other than those mentioned in 17 01 06
17 03	bituminous mixtures, coal tar and tarred products
17 03 02	road base and road planings (other than those containing coal tar)
17 05	soil (including excavated soil from contaminated sites), stones and dredging spoil
17 05 04	soil and stones other than those mentioned in 17 05 03

EUROPEAN WASTE CATALOGUE - COMMISSION DECISION 2000/532/EC	
CODE	WASTE TYPE
17 05 08	track ballast other than those mentioned in 17 05 07
17 08	gypsum-based construction materials
17 08 02	gypsum-based construction materials other than those mentioned in 17 08 01
17 09	other construction and demolition wastes
17 09 04	mixed construction and demolition wastes other than those mentioned in 17 09 01, 17 09 02 and 17 09 03
17 09 04	mixture of soil, brick, stones and concrete
19	WASTES FROM WASTE MANAGEMENT FACILITIES, OFF-SITE WASTE WATER TREATMENT PLANTS AND THE PREPARATION OF WATER INTENDED FOR HUMAN CONSUMPTION AND WATER FOR INDUSTRIAL USE
19 12	wastes from the mechanical treatment of waste (for example sorting, crushing, compacting, pelletising) not otherwise specified
19 12 07	wood other than that mentioned in 19 12 06
19 12 09	minerals (for example sands, stones)
19 13	wastes from soil and groundwater remediation
19 13 02	solid wastes from soil remediation other than those mentioned in 19 13 01
20	MUNICIPAL WASTES (HOUSEHOLD WASTE AND SIMILAR COMMERCIAL, INDUSTRIAL AND INSTITUTIONAL WASTES) INCLUDING SEPARATELY COLLECTED FRACTIONS
20 01	separately collected fractions (except 15 01)
20 01 41	wastes from chimney sweeping
20 02	garden and park wastes (including cemetery waste)
20 02 02	soil and stones
20 03	other municipal wastes
20 03 03	street-cleaning residues

- 3.3.2 Other wastes with the potential to cause dust may be accepted and are subject to the same management, mitigation and control measures included in section 4.
- 3.3.3 Reference should be made to the Risk Assessment Tables outlined in Section 5.7 and the control measures outlined in Section 4 for details of the handling procedures and mitigation measures in place for wastes stored at the site.

3.4 Overview of Site Operations

3.4.1 Following acceptance, mixed waste is tipped in the main waste reception, inspection and sorting area comprising of a stockpile against a two-sided concrete bay (AREA 1). Following tipping the waste is subject to the following:

- a) Tipped waste will undergo an inspection to remove any non-conforming material (if any) which is picked out and immediately quarantined for removal from site.
- b) Once any non-conforming material has been removed, the bulkier items will be removed by a grab.
- c) Plasterboard typically arrives already segregated from waste loads, however, if any is identified during sorting / separation it will be handpicked and stored in a dedicated plasterboard storage container which will be located in AREA 8 or 9.
- d) Following the above, the remaining waste stored in AREA 1 will comprise of wastes to undergo further sorting and separation via the trommel and picking line. Waste will be placed directly into the hopper of the plant from AREA 1.
- e) Waste will be transferred through the trommel with <40mm screened fines being deposited in a freestanding stockpile outside the waste transfer and treatment building (AREA 2).
- f) The other wastes continue via a conveyor belt over a two-bay picking line where recyclables are handpicked and deposited into containers beneath the picking station.
- g) Following the picking line there is an overband magnet to separate any ferrous metals from the remaining waste, these are deposited into a container beneath the conveyor (AREA 5). Waste then continues to pass through a density separator (blower) which blows the lighter fractions of residual waste into a container (AREA 6).
- h) Following the above the remaining wastes should be heavier items consisting of inert CDE waste (stone, concrete hardcore). This material falls off the end of the conveyor into a freestanding stockpile (AREA 7).
- i) Once the wastes stored beneath the picking line reach maximum capacity they are bulked for storage in larger containers in the yard of the site (AREA 8 & 9) prior to removal.
- j) Wood is stored in a three-sided concrete bay in the yard (AREA 10).

3.5 Mobile Plant and Equipment

- 3.5.1 Table 3.2 details the plant / equipment available on site. Only trained operators will be permitted to drive / operate the plant / equipment listed below.

Table 3.2 - Plant & Equipment

Item	Number	Function
18 tonne skip loader	2	Collection/deposit of skips
32 tonne hook loader	3	Collection/deposit of roll on roll off skips
13 tonne waste handler	1	Loading/unloading/movement/sorting
Telehandler	1	Loading/unloading/movement/sorting
Weighbridge	1	Accurately weighing of loads
Trommel	1	Separation of clean inert material from mixed waste
Picking station (including conveyor belt, magnets and blowers)	1	Mechanical and manual separation of wastes by type

- 3.5.2 The plant/equipment on site may vary and additional equipment may be hired-in to cope with busy periods, larger jobs or jobs with specific requirements.
- 3.5.3 All plant and equipment used on site will be subject to preventative maintenance checks to ensure effectiveness and no excess smoke from exhausts is being produced.
- 3.5.4 A no idling policy is in place which ensures that engines are switched off when vehicles or plant are not in use. This policy will ensure that tail pipe emissions are significantly reduced.

4 Dust Management & Mitigation

4.1 Sources of Fugitive Dust / Emissions

4.1.1 The main dust/emission sources which arise from site are detailed in Table 4.1 below:

Table 4.1 – Dust emission source table

Source/Plan Ref	Description
Waste reception / tipping area(s)	The dispatch / tipping of waste into the waste reception area on site.
Loading of waste into mechanical plant	Loading waste into the treatment plant i.e. the hopper of the screener/trommel
Vehicle movements	Vehicles accessing/egressing the site tracking dust on to or off the site. General vehicle or plant moving around the site causing the resuspension of dust particles from dry site surfaces.
Movement / handling of waste	Loading waste materials on to vehicles for removal off site or movement of waste around the site for storage or to await further treatment.
Storage of potentially dusty waste types	The storage of potentially dusty wastes without appropriate dust suppression methods or when weather conditions increase the risk of dust emissions i.e. where wind speed reaches 4 on the Beaufort Wind Scale or prolonged periods of hot dry conditions.
Vehicles/plant/machinery	Particulate emissions from the exhaust of vehicles/plant/machinery on site (NO ₂).

4.2 Control Measures (general/staff training/daily inspections)

4.2.1 Good housekeeping and site practices are vital to ensure that the impacts from fugitive dust and debris impacts are controlled.

4.2.2 Daily inspections are undertaken on site in relation to the presence of dust / debris with corrective actions implemented upon discovery. Operational staff are suitably trained in procedures to keep the levels of dust /debris to a minimum including prevention and mitigation.

4.2.3 In dry and windy weather conditions recorded inspections will take place more frequently (up to three times a day). All inspections are visual and recorded on the Inspection Checklist, see Appendix II

- 4.2.4 Areas where dusts are likely to arise or build up will be continuously monitored throughout the working day and cleaned on a daily basis; paying special attention to plant and equipment where dust is more likely to build up.
- 4.2.5 The weather conditions at the site will be considered and recorded at the start of each working day so that the days operations may be planned to consider any potential increase in dust emissions from climatic conditions. If wind conditions between 4-6 on the Beaufort Wind Scale are experienced the site manager will decide whether to implement more frequent visual monitoring i.e. three times daily or periodically (every hour) or if continuous suppression is required.
- 4.2.6 If excessive windy conditions are expected (winds exceeding 6 on the Beaufort Wind Scale) the site manager can decide if stockpile heights need reducing or if some treatment operations i.e. crushing of waste needs to be temporarily suspended.

4.3 Housekeeping Schedule

- 4.3.1 The operator will avoid fugitive dust emissions from site operations by committing to the following housekeeping schedule:
- a) Maintain a clean, well-organised site
 - b) Use suppression systems to dampen down potentially dusty wastes
 - c) Jet spray and disinfect storage bays when emptied
 - d) Clean equipment that has been in contact with dusty materials
 - e) Carry out a deep clean of the reception / processing structure and external areas once a quarter and record this in the site diary
- 4.3.2 In the event of mud on local roads that has the potential to become dusty in hot and dry conditions, the operator may arrange for a road sweeper to be deployed on the surrounding roads.

4.4 Control Measures (boundary fencing / containment)

- 4.4.1 Wastes with the highest potential to produce dust (soil, stones, hardcore etc) are stored in three sided concrete bays or freestanding stockpiles. All wastes are stored with a minimum 1m freeboard from the surrounding containment/walls.
- 4.4.2 Fencing surrounding the site boundary comprises predominantly of 3m concrete walls, particularly where waste with dust potential is stored.

4.5 Control Measures – site surfacing

- 4.5.1 The site is predominantly laid with an impermeable surface. There is a small area of the site that comprises of hardstanding used for the storage of inert material.
- 4.5.2 The operator has the capability to dampen down surfaces and stockpiles with mains water and hosepipes.
- 4.5.3 Areas of impermeable concrete will be manually swept at the end of each working day to collect any litter / dust that has settled on the site surface to prevent it becoming windblown outside of operational hours.
- 4.5.4 The condition of site surface and impermeable concrete pad will be checked as part of site inspections any defects such as cracks will be repaired as soon as practicable to ensure the site can be swept effectively and no material can become trapped and dry in hot weather producing dust.

4.6 Control Measures - vehicle movements

4.6.1 The control measures implemented by site management to minimise the risk of dust and debris emissions from dusty site surfaces and vehicle movements include:

- a) Access to a permanent mains water supply and additional onsite water storage tanks which will be available at all times, particularly during hot and dry weather conditions to ensure that the dust suppression systems can function effectively.
- b) Vehicle speed on site is restricted to 5mph. Signs are erected at the relevant areas of the site. This reduces the potential for re-suspension of dust and particulate matter.
- c) Exiting vehicles leaving the site will avoid all areas where wastes are stored or stockpiled. All vehicles will be checked before they leave the site to ensure no mud/dust can stretch beyond the site access. All incoming/outgoing vehicle loads will be sheeted.
- d) If required hoses can be used to wash any dust, mud or debris off the wheels of vehicles before exiting the site.
- e) Any mud/dust deposited off site will be treated as an emergency and cleaned by operatives using manual techniques or the operator will organise for a road sweeper to be deployed.
- f) Any dust/fluff cleared from mobile plant or other areas where dust/fluff could idle will be deposited into one of various mobile wheelie bins which are located near the site office.
- g) The operator will dampen down surfaces using a hose; paying special attention to the areas where dust/debris is likely to build-up i.e. where wastes with dust potential are stored. These will be behind and on top of storage bays which are not readily accessible when operations are taking place.
- h) The operator will shut down plant/machinery and hose them down to remove any dust/fluff that may have accumulated beneath them.

4.6.2 It must be noted the site currently accept wastes that are considered to have the potential to be dusty (soil, stones and rubble) and have had no complaints from third parties or regulators regarding dust or tracking mud/debris off site.

4.7 Control Measures – site suppression

- 4.7.1 Hosepipes – There are hoses situated around the site which can be utilised to spray bays and stockpiles, and for further dampening of the site surface. The hosepipes will be used daily to dampen down all wastes at the site to minimise the risk of dust being produced.
- 4.7.2 Mobile water bowser -There is a mobile water bowser situated on site that can be utilised to aid in suppression such as dampening stockpiles and site surfaces. The mobile water bowser can be filled using the main water supply and transported anywhere on site.
- 4.7.3 Water storage tanks – there is a 20,000-litre water storage tank on the adjacent site owned by Manor Mix, in the event of an emergency or periods of prolonged hot and dry weather, the operator can utilise the tank for dust suppression.
- 4.7.4 The above suppression techniques will not be in use continually but only during the following circumstances where site management will inform staff to implement them:
- a) If the weather has been dry for three days and waste stockpiles/surface are dry.
 - b) During dry/warm conditions i.e. temperatures above 75°F.
 - c) During weather conditions when winds reach 4 or above on the Beaufort Wind Scale
 - d) In the event of operational staff or site management are noticing dust plumes appearing on site or dust emanating off site from carrying out daily on/off site inspections.
 - e) In the event the operator requires to load dusty waste which may cause airborne dust once being loaded.

4.8 Control Measures – wheel wash / wash down area

- 4.8.1 Site operatives will inspect vehicles prior to leaving the site and if required clean vehicle wheels before exiting using hose pipes to reduce the risk of mud/debris being tracked off-site.
- 4.8.2 In the unlikely event that the material is deposited on the public highway it will be treated as an emergency and will be cleared immediately by the operator using manual techniques (brush, hoses) or if required a road sweeper will be organised by the site manager.

4.9 Control Measures – water supply

- 4.9.1 A permanent mains water supply is available on site to ensure that dust suppression can function effectively. Any external water pipes will be lagged to prevent frost damage during winter months and the operator will set up a notification alert system with the Met Office in the event of a drought or hot weather being imminent. This will enable the operator to source water in the short and long term and store additional tanks if required prior to a potential water ban.

4.10 Control Measures – processing of waste

- 4.10.1 Screening – prior to passing over the picking line waste will be screened in a trommel to separate <40mm fines. The position of the trommel is located within the building and screened fines are deposited adjacent to the open fronted access to the building. Adjacent to where the fines are deposited is a 3m wall which will provide shelter to the screen and the deposit of waste into a stockpile.

4.11 Control Measures – storage of waste

4.11.1 The control measures implemented by site management to minimise the risk of dust and debris emissions from the continuing storage of wastes and the loading/unloading of these include:

- a) Stockpiles will be sprayed with water during periods of dry/windy weather to prevent excessive drying and dust formation.
- b) In the event of dust plumes on site, dust emanating off site, dry weather conditions or when winds reach 4 on the Beaufort Wind Scale, hoses will be used to dampen storage areas and stockpiles.
- c) Drop heights will be kept to a minimum to prevent dust emissions where adjustment permits.
- d) All waste which has undergone waste sorting/separation and are stored in dedicated bays will have a minimum 1m freeboard to prevent the waste exceeding the height of the bay and causing dust plumes.
- e) In the event of high winds outside of operational hours (the likelihood of which will be checked daily via Met Office notifications) stockpile heights of potentially dusty wastes e.g., soils, stones and aggregate will be reduced by 1m and covered with tarpaulin to prevent wind whipping of material.

4.12 Control Measures – vehicle movements and mobile plant

4.12.1 A no idling policy is in place which ensures that engines are switched off when vehicles or plant are not in use. This policy will ensure that tail pipe emissions are significantly reduced.

4.13 Control Measures - loading and unloading vehicles

4.13.1 The operator of the loading plant will direct vehicles to a position and location which reduces wind whipping of loaded material.

- 4.13.2 Drop heights will be kept to a minimum and tipped in a manner to ensure the pile does not exceed the 1m freeboard height of the bays / walls.

4.14 Control Measures - Process Monitoring

- 4.14.1 Process monitoring will be undertaken by site operatives to ensure procedures are being carried out effectively.
- 4.14.2 Following removal of waste from a bay a visual inspection of the bay will be undertaken to ensure all material has been removed before refilling. This ensures no residual material is left behind that could become dry and dusty from being stored for longer than required.
- 4.14.3 To ensure the site doesn't reach capacity and is unable to accept further waste loads, visual monitoring will be undertaken of storage bays. If it is evident multiple bays are full or near full and have not been emptied this indicates the site is nearing full capacity and the operator will arrange for waste to be removed or delay acceptance of loads until there is sufficient capacity available.

5 Dust Management Risk Assessment Model

5.1 Fundamental Considerations

- 5.1.1 Source/Hazard: A property or situation that in particular circumstances could lead to harm.
- 5.1.2 Consequences: The adverse effects or harm as the result of realising a hazard which causes the quality of human health or the environment to be impaired in the short or long term.
- 5.1.3 Risk: A combination of the probability of occurrence of a defined hazard and the magnitude of the consequences of the occurrence.

5.2 Pathway

- 5.2.1 Important in the assessment of a particular risk(s) and to inform the subsequent management of the risk(s) is the identification of the pathway(s) through which the risk may affect the identified receptor(s). The following are examples of pathways:

- Air
- Ground
- Water
- Direct contact / exposure

5.3 Consequences

- 5.3.1 Table 5.1 highlights the consequences of the hazard(s) identified and the abbreviations for each as used in the Risk Assessment Table 5.5 in Section 5.7.

Table 5.1 – Consequences

Abbreviation	Consequences
A	MINOR INJURY
B	MAJOR INJURY
C	DEATH
D	AIR POLLUTION
E	WATER POLLUTION
F	POLLUTION OF LAND

5.4 Effects of consequences

- 5.4.1 In order to quantify the level of risk and identify the appropriate management procedures, the potential effects must be considered, as outlined in Table 5.2 below:

Table 5.2 – Potential effects

Abbreviation	Effect of Consequences	Management Required?
S	SEVERE	In all cases
Mo	MODERATE	In most cases
Mi	MILD	Occasionally
N	NEGLIGIBLE	No

- 5.4.2 Note: "Management" is the action required to reduce the risk of a hazard causing a problem on site. Contingency measures are procedures which are in place to reduce the consequences of a hazard.

5.5 Risk estimation and evaluation (probability/frequency of occurrence of hazard)

- 5.5.1 Table 5.3 allows the likelihood of an occurrence of an identified risk to be assessed:

Table 5.3 – Likelihood

	Probability	Evaluation
1	Very likely	Could occur during any working day
2	Likely	Could occur regularly
3	Possible	Event possible
4	Unlikely	Event very unlikely

5.6 Risk Assessment Outcome (combination of probability & consequence)

5.6.1 Table 5.4 shows the resultant risk of an identified hazard or potential situation. This uses the hierarchy of both probability and consequence to assess the level of risk. The level of risk determines what level of management would be required in order to reduce the risk of occurrence and/or scale.

Table 5.4 – Risk assessment outcome

		Consequence			
		S	Mo	Mi	N
Probability	1	High	High	Medium	Low
	2	High	Medium	Low	Negligible
	3	Medium	Low	Negligible	N/A
	4	Low	Negligible	N/A	N/A

5.6.2 Where the risk assessment outcome is high, first-level management of the risk is essential, i.e. removal of hazard, implementation of major infrastructure/structural design measures to contain the risk/hazard and company policy changes to incorporate the management of the risk. All risk management measures must be supplemented with detailed induction training, spot training and tool-box talks to ensure all site staff and users are made fully aware of the risk/hazard, all potential consequences and necessary management and contingency procedures.

5.6.3 Where the risk assessment outcome is medium, the management of the risk should be tackled by management or delegates. If removal of the hazard is not possible, management will normally be met through implementing minor structural design measures or by imposing procedures for the prevention of occurrences which will be conveyed to all site staff through the appropriate training, including any contingency measures/procedures.

5.6.4 Where the risk assessment outcome is low, the management of the risk can be done wholly through appropriate training to site staff including any contingency measures/procedures.

- 5.6.5 Where the risk assessment outcome is near-zero, site staff should be made aware of the possibility of an occurrence, and contingency measures should be readily available to all staff should they be required.

5.7 Risk Assessment Table

- 5.7.1 The following pages contain the site-specific risk assessment for the site with appropriate remedial actions, recommendations and comments included for each identified hazard, potential contaminant, or situation.
- 5.7.2 Table 5.5 also contains references to the appropriate section(s) of the site's EMS for additional management procedures.
- 5.7.3 As discussed in the section above, all situations which identify a risk from Low –High should be incorporated into the staff/visitor training schedule, where appropriate and acted on as required.
- 5.7.4 Table 5.5, overleaf details the relevant pathways and receptors for each individual dust/emission source and relevant measures required to break these linkages. The control measures outlined in Section 4 will be included within these tables as well as additional specific measures.

SEE TABLES OVERLEAF

Table 5.5 – Source, Pathway, Receptor Routes

Source(s)	Pathway	Receptor(s)	Consequences	Effect	Probability	Assessment Outcome	Remedial Action/ Recommendations/ Comments	Assessment Outcome following action & recommendation
Dust / debris on site surfaces	Air	See Table 2.1	<p>Harm to human health – respiratory irritation and illness.</p> <p>Air Pollution Water Pollution</p>	Moderate	3	Low	<p>Site surfaces will be dampened using hose pipes. The operator will pay special attention to the areas where dust/debris is likely to build-up i.e. near to treatment plant and stockpiles. All site operatives will be trained in these procedures, and it will be the responsibility of site management to ensure the measures have been carried out.</p> <p>Daily housekeeping inspections are undertaken on site to clear debris and litter and prevent it from leaving the permit boundary.</p> <p>Vehicle speed on site is restricted to 5mph. Signs are erected at the relevant areas of the site, including the main access gates, to advise drivers of the speed limit. This will reduce the re-suspension of dust and particulate matter.</p> <p>Exiting vehicles leaving the site will avoid all areas where wastes are stored or stockpiled. All vehicles will be checked before they leave the site to ensure no mud/dust can stretch beyond the site access. All incoming/outgoing vehicle loads will be sheeted.</p> <p>Vehicle wheels will be cleaned using an on-site hose pipe if required.</p> <p>Mud or debris deposited onto the public highway will be treated as an emergency and cleaned by site operatives. If required, the site manager will arrange for a road sweeper to be deployed on the public highway.</p> <p>Continuous monitoring regime in place to identify any potential for dust leaving site boundary.</p>	Negligible

Source(s)	Pathway	Receptor(s)	Consequences	Effect	Probability	Assessment Outcome	Remedial Action/ Recommendations/ Comments	Assessment Outcome following action & recommendation
Vehicles tipping into waste reception/storage areas	Air	As above	Harm to human health – respiratory irritation and illness. Air Pollution Water Pollution	Moderate	2	Medium	<p>The waste reception/tipping area is located against a concrete panel wall which will provide protection from any potential dust plumes emitted as a result of tipping skips.</p> <p>Drop heights will be kept to a minimum to prevent dust emissions which will be no more than 1m – 2m above the ground.</p> <p>The loading of waste into the plant and waste storage areas is undertaken by a 360° excavator which can deposit directly into the hoppers, this is considered better method than a loading shovel.</p> <p>The operator will avoid double handling of waste.</p> <p>Staff continue to monitor the waste to ensure it does not escape the confines of storage bays and skips.</p> <p>The operator also has the use of a mobile water bowser and hosepipes on site.</p>	Low
Loading of waste into treatment plant	Air	As above	Harm to human health – respiratory irritation and illness. Air Pollution Water Pollution	Moderate	2	Medium	<p>Drop heights will be kept to a minimum to prevent dust emissions which will be no more than 1m – 2m above the plant.</p> <p>The on-site hosepipes and mobile water bowsers will offer additional suppression.</p> <p>The operator will avoid double handling of waste and may directly load from vehicle directly into the treatment plant if feasible.</p> <p>Suspension of operations during conditions where winds reach 7+ on the Beaufort Wind Scale, if dust plumes occur on site or if dust is emanating off site following on/off site inspections.</p>	Low

Source(s)	Pathway	Receptor(s)	Consequences	Effect	Probability	Assessment Outcome	Remedial Action/ Recommendations/ Comments	Assessment Outcome following action & recommendation
Processing of waste as part of mechanical recycling facility comprising of a screener/trommel	Air	As above	Harm to human health – respiratory irritation and illness. Air Pollution Water Pollution	Moderate	2	Medium	<p>The only mechanical treatment undertaken on site is the screening of waste via a trommel to separate the <40mm fines. The trommel is positioned at the open fronted end of the waste transfer and treatment building adjacent to a 3m high wall which will provide protection from winds.</p> <p>Operations will reduce or suspend if the site management detect noticing dust plumes emanating on site.</p> <p>The storage area bays are located to ensure that vehicles leaving the site do not track through wastes.</p> <p>All potentially dusty waste stored in bays will be stored with a 1m freeboard from the height of the bay.</p> <p>The site undergoes continuous monitoring by operational staff who will continue to inspect and clean the site daily in addition to monitoring stockpile and freeboard heights.</p>	Low
Wastes dropping from conveyors into stockpiles	Air	As above	Harm to human health – respiratory irritation and illness. Air Pollution Water Pollution	Moderate	2	Medium	<p>The same actions outlined above apply.</p> <p>Suspension of operations during conditions where winds reach 7+ on the Beaufort Wind Scale, if dust plumes occur on site or if dust is emanating off site following on/off site inspections. The stockpiles beneath the treatment bays can be sprayed using hoses during the above weather conditions.</p> <p>Operations will reduce or suspend if the site management detect dust plumes on site or dust emanating off site from daily on/off site inspections.</p>	Low

Source(s)	Pathway	Receptor(s)	Consequences	Effect	Probability	Assessment Outcome	Remedial Action/ Recommendations/ Comments	Assessment Outcome following action & recommendation
Prolonged periods of dry/warm weather or conditions where winds reach 4+ on the Beaufort Wind Scale	Air	As above	Harm to human health – respiratory irritation and illness. Air Pollution Water Pollution	Moderate	2	Medium	Additional (increased from one to three times) daily visual assessment / monitoring will be on and off site around the site perimeter in order to ensure dust is not escaping beyond the site. Continual use of mobile dust suppression methods until weather conditions change/improve or inspections detail dust emanating on/off site is not occurring.	Low
Particulate emissions from the exhaust of vehicles / plant /generators and other non-road going machinery on site.	Air	As above	Harm to human health – respiratory irritation and illness. Air Pollution Water Pollution	Moderate	3	Low	All vehicles, plant and equipment are serviced in line with manufacturer recommendations to ensure they are fit for purpose and ensure emissions are below the acceptable level. All vehicles, plant and equipment undergo daily inspections under the operator's preventative maintenance schedule to ensure no visible faults are detected. Ongoing inspections will note any faults with machinery and if a fault detected, the site/compliance manager or TCM will decommission the plant/vehicle until it is fit for purpose.	Very Low - Negligible

6 Monitoring and Contingency Measures

6.1 Monitoring and Recording

Visual Dust Monitoring

- 6.1.1 Dust emissions at the site will be monitored by visual observation and recorded on the Dust Monitoring Form. There are no fixed locations for dust monitoring as this will change dependent on weather conditions and the direction of wind. Monitoring will be undertaken from multiple points around the boundary with additional consideration being taken into account for the prevailing wind direction at the time of monitoring. Monitoring results will be recorded on the Dust Monitoring Form, see Appendix IV.
- 6.1.2 Dust monitoring will be carried out during operational hours. Recorded visual monitoring will be undertaken at least twice a day, for a minimum of five minutes each time by appropriately trained site operatives. Visual monitoring will take place at the beginning of the working day and when operations with the highest potential to produce dust are taking place. This is considered to be the most beneficial method to ensure that mitigation measures being implemented on site are effective. It is expected that staff members will also check for dust emissions as they approach or leave the site boundary.
- 6.1.3 If excessive dust emissions (dust clouds) are observed, the site manager will establish what is causing the excessive dust emission to be generated and take remedial action. The results of the investigation and what action was taken will be recorded.
- 6.1.4 If the operator increases suppression methods and the suppression methods are still not considered suitable in resolving the dust emissions, operations will reduce or cease until the problem has been fully rectified. Site management will be responsible for investigating dust issues and provide additional training to staff to prevent any re-occurrences.
- 6.1.5 Extra and unplanned monitoring will be carried out on site when conditions are particularly windy (4 or above on the Beaufort scale) or dry, new activities are being undertaken, new

machinery is being used or following the receipt of a complaint or incident related to dust emissions.

- 6.1.6 Site operatives will continuously visually monitor dust emissions whilst plant is in operation and will control dust emissions using the procedures outlined in sections 4.2 – 4.14 and asking the site manager, compliance manager, TCM or third party for advice as required. Work procedures will be stopped/adjusted should it be evident significant dust is being emitted which has the potential to migrate offsite.

6.2 Staff Shortages / Human Error

- 6.2.1 In the event of unforeseen staff shortages arising from illness, suspension or no shows, the operator will make a judgement whether to reduce the number of incoming loads, thus reducing processing frequency and divert material to an alternative site. The operator will then seek further employment within a timely manner to ensure the site can continue to operate at its required capacity.
- 6.2.2 All staff are trained and undergo toolbox talks every 12 months (or sooner if operations change) to reduce the impact of human error. In instances where a human error has caused to an on-site dust issue, the site may suspend operations until the issue has been rectified and the member of staff will be warned and re-trained accordingly.

6.3 Weather Conditions

- 6.3.1 The operator will receive Met Office weather alerts for conditions which could cause a potential on or off-site dust complaint:
- a) Dust plumes occurring on site, potentially if winds reach 4 on the Beaufort Wind Scale
 - b) Winds exceeding 7 on the Beaufort Wind Scale
 - c) Dust escaping beyond the site boundary.
 - d) Droughts or periods of hot weather exceeding 3 major dry days which could lead to water shortages, hosepipe bans and excessive dust.

6.3.2 The operator will install the following preventative measures to avoid serious dust pollution:

WINDS EXCEEDING 7 ON THE BEAUFORT WIND SCALE

- No sorting, processing or treatment of any wastes which are likely to be blown around during these wind conditions; operations would also be suspended where it is evident where dust is escaping beyond the site. Operations would only continue once the problem has been rectified i.e. by carrying out suppression or reducing stockpile heights or if weather conditions improve.
- Stockpiles will be reduced to further such as a 2m freeboard to prevent the material escaping beyond the site boundary.
- Stockpiles may be covered with tarpaulin in the event the above procedures are not considered effective.
- If higher winds i.e. amber/red alert on Met Office are present, the site will deploy the above measures and may be forced to close operations until conditions have improved.

DROUGHTS/WARM, DRY WEATHER

- In cases such as a hosepipe ban or water shortage, the site will ensure there is additional water available i.e. tanks which can be used to ensure suppression techniques can still function. Tanks will include IBCs filled with water and a mobile water bowser to be utilised.
- The operator will contact the water company daily to see when water supply is available, operations would reduce in these instances.
- Where dust is becoming a major concern then the operator will stop processing the material and cover the piles using tarpaulin until conditions or dust suppression techniques are considered effective.

6.4 Out-of-hours Monitoring

6.4.1 Weather conditions are checked at the start of each working day enabling site management to take extra precautions in the advance weather warnings or conditions (exceeding 7 on the Beaufort Wind Scale) which could lead to the site emitting dust off site when it is not operational. In the event of one or more of these scenarios, the operator would deploy the following contingencies prior to shut down:

- a) Site surfaces and any stockpiles of waste with the potential to emit dust will undergo further suppression (at least 30 minutes before shutdown).
- b) The height of the stockpile would be reduced allowing for an extra freeboard i.e. additional 0.5m – 1.0m totalling 1.5m – 2.0m.
- c) Stockpiles with the potential to emit dust could be transferred into sealed containers.
- d) The operator would purchase or hire tarpaulins sheets which can be placed weighted down over stockpiles with the potential to emit dust, these would only be used in amber or red alert weather warnings in relation to wind.
- e) Senior management have remote access to CCTV cameras on site via their mobile devices so in the event of amber or red alert weather mornings, the cameras would be monitored at least every three hours, and out-of-hours staff would be called to attend site and take remedial action (the above actions) if CCTV shows dust leaving the site boundary.

6.5 Operational/Power failure

6.5.1 The site manager will be contacted by staff in the event of any operational failure such as the breakdown of plant, systems or equipment and will decide whether operations are to continue or be suspended prior to corrective action being taken. Serious operational failures will be recorded in the site diary and operations suspended if dust is apparent.

6.5.2 All details of defects, problems and repairs carried out will be recorded on a daily inspection form. Detailed comments may also be recorded in the site diary. All repairs will be carried out as soon as practicable.

- 6.5.3 All repairs to site security will be made on the discovery of the damage and the site will be made secure until the repair has been carried out.
- 6.5.4 Any major defects found during site inspections which are likely to lead to a breach of permit conditions will be repaired by the end of the working day in which they are found, where possible. If a repair is not possible by the end of the working day and a potential breach of permit conditions may occur, the EA will be contacted to agree a suitable timescale for repair.
- 6.5.5 The operator would also be required to make a note of any unavoidable events plant/equipment malfunctions in the site diary, rather than just actual complaints received. This will ensure that if complaints are received retrospectively from either the Council/EA or directly, any circumstances which led to that complaint as a result of elements outside of the operator's control would be able to be attributed to the cause of the complaint. If there are significant dust releases outside normal operations, the operator will cease operation, investigate, and resolve the issue before continuing.

7 Reporting and Complaints Response

7.1 Reporting of Complaints

7.1.1 Should a complaint regarding dust be received by the site, the complaint will be recorded on the complaints form and investigated in accordance with the complaint's procedure. Details of information to be recorded as a minimum are:

- a) Who made the complaint.
- b) Date & time of the complaint.
- c) The nature of the complaint.
- d) Action taken.
- e) Signature.

7.1.2 The person completing the form will then, if possible, make a note of:

- a) the weather conditions at the time of the problem (rain snow fog etc.)
- b) strength and direction of the wind; and,
- c) the activities being undertaken at the time of the complaint, particularly anything unusual.

7.1.3 The site manager will identify what caused the excessive dust emissions to be generated. If the excessive dust emissions have been caused by a procedure not being carried out properly, then staff will receive further training on the dust procedures and this DEMP. If the excessive dust emission has been caused by plant failure, then the plant will be repaired as soon as possible.

7.1.4 All complaints will be acknowledged and investigated, with resultant actions reported to the complainant. Any complaints received by the Environment Agency relating to dust emissions from the site are dealt with on the same day.

7.1.5 If three or more complaints are received on the same working day, the TCM will escalate the complaint, review site operations taking place and commit to stop operations until the cause

has been identified. The known cause will not commence until the issue has resolved i.e. targeted suppression or plant malfunction and repair.

7.1.6 The operator would also be required to make a note of any unavoidable events plant/equipment malfunctions in the site diary, rather than just actual complaints received. This will ensure that if complaints are received retrospectively from either the Council/EA or directly, any circumstances which led to that complaint as a result of elements outside of the operator's control would be able to be attributed to the cause of the complaint.

7.1.7 If the source cannot be ascertained with 100% confidence, the site manager, compliance manager or TCM will either suspend or reduce the likely dust/particulate generating activities.

7.1.8 The EA will be notified by email of any third-party dust complaints received by the end of the working day including the complainant and the outcome of the investigation. Where complaints are substantiated as causing or likely to cause significant pollution, then the EA will be notified without delay, as required by conditions in the EP.

7.2 Liaison with Neighbours

7.2.1 A Site Notice Board will be located at the entrance to the site. The notice board will include the following information:

- a) The permit holder's name.
- b) An emergency contact name and telephone number.
- c) A statement that the Site is permitted by the Environment Agency.
- d) The Environmental Permit Reference number and,
- e) The Environment Agency's telephone number (03708 506506) and incident hotline (0800 807060).

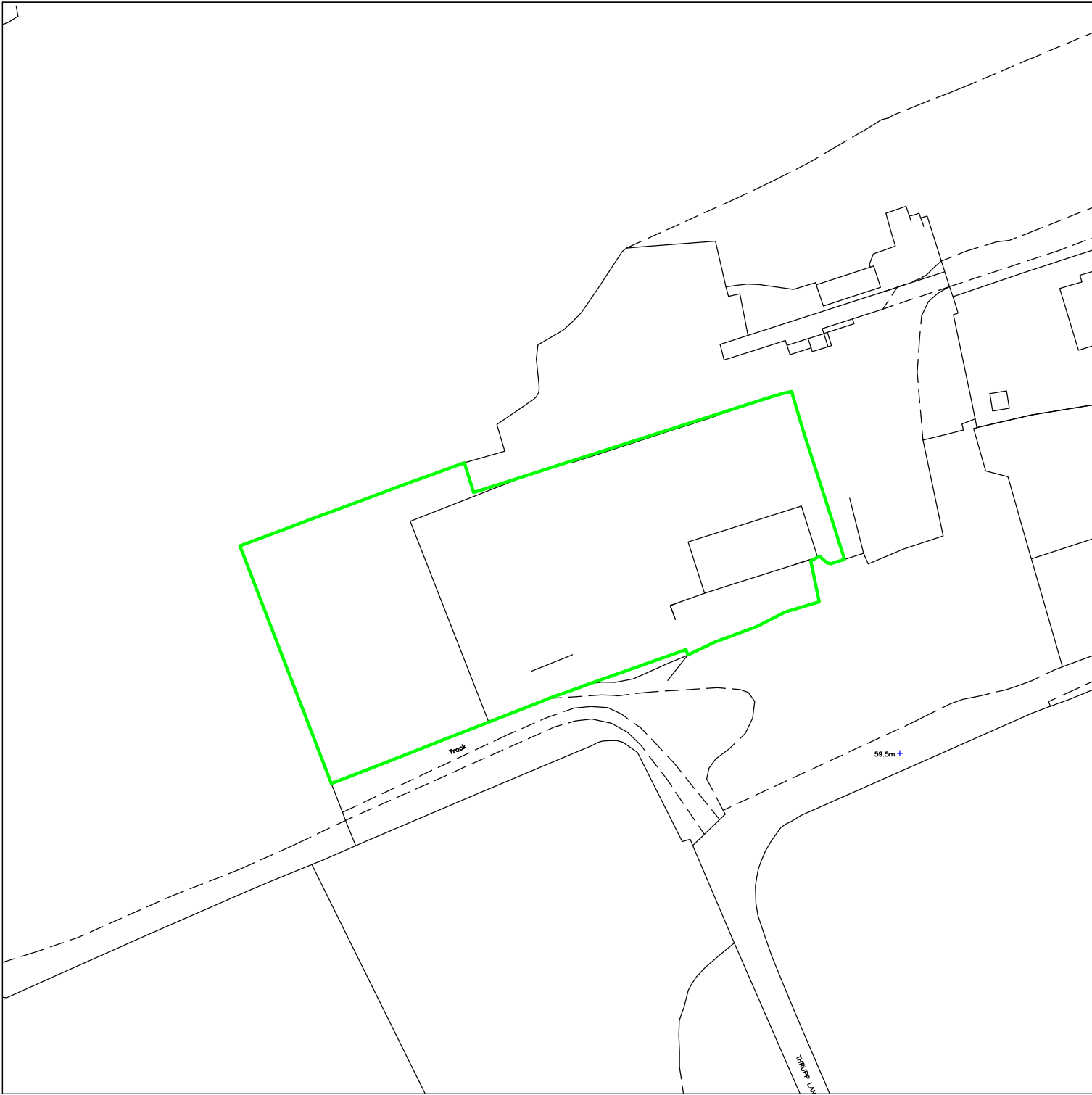
7.2.2 The provision of the above information will ensure that members of the community can contact the operator should they be concerned by dust emissions or wish to make a

complaint. This also applies to any events that may happen when the site is unmanned / not operational.

- 7.2.3 In the extreme event of significant but temporary dust releases outside normal operations, neighbours will be contacted to advise them of the situation and the action being taken. The EA will also be notified.
- 7.2.4 An open-door policy will be encouraged by the operator to enable any complaints from neighbouring premises (if received) to be dealt with immediately. The complainant will then be supplied with remedial actions taken and any procedures or measures put in place by the operator to reduce or ideally eradicate the likelihood of a subsequent complaint.
- 7.2.5 If any dust complaints are received, the complaint will be assigned to an operative familiar with the sites operation who will complete the form in Appendix III which will be kept for inspection on request by the local authority and/or EA. Details of information to be completed are dates, nature of complaint, weather conditions at the time of the complaint, investigation details, action taken and a signature (as a minimum). Dust complaints will be investigated and responded to within 24 hours and suitably reviewed by the site manager who is ultimately responsible.

Appendix I

Drawings



NOTES

Drawing for indication only. Reproduced with the permission of the controller of H.M.S.O. © Crown Copyright and database rights 2025. OS AS0000813445. This drawing is copyright and property of Oaktree Environmental Ltd.

REVISION HISTORY

Rev:	Date:	Init:	Description:
-	08.12.25	EG	Initial drawing

KEY:

- Existing permit boundary
- Proposed extension area

Scale Bar (1:1,250)

0 10 20 30 40 50m

N

TITLE:

PERMIT BOUNDARY PLAN

CLIENT:

Oxford Skip Hire Ltd


PROJECT/SITE:

The Former Coal Yard, Thrupp Lane, Abingdon, Oxfordshire, OX14 3NG


SCALE @ A4:	CLIENT NO:	JOB NO:
1:1,250	2895	015

DRAWING NO:	REV:	STATUS:
2895-THR-02	-	Issued

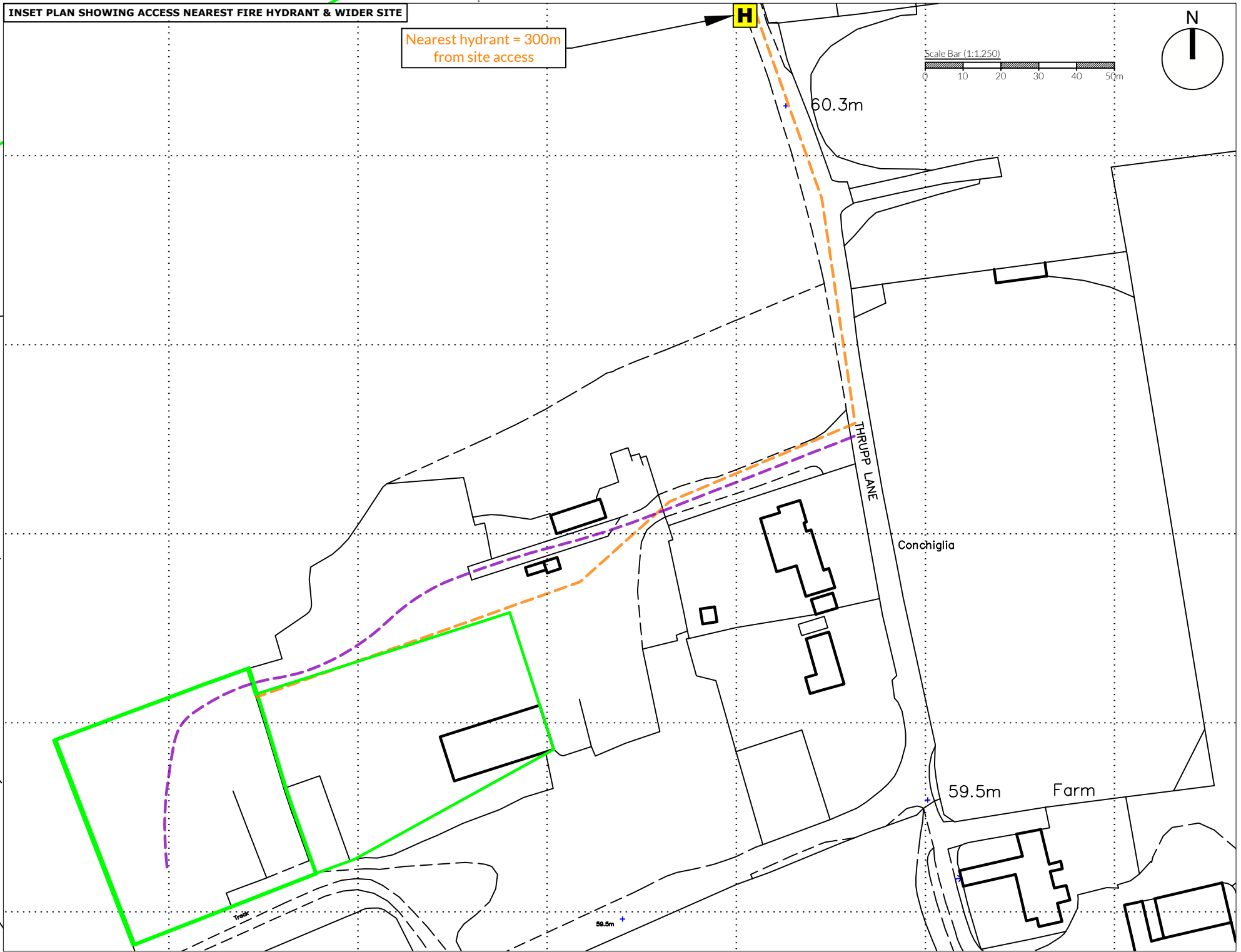
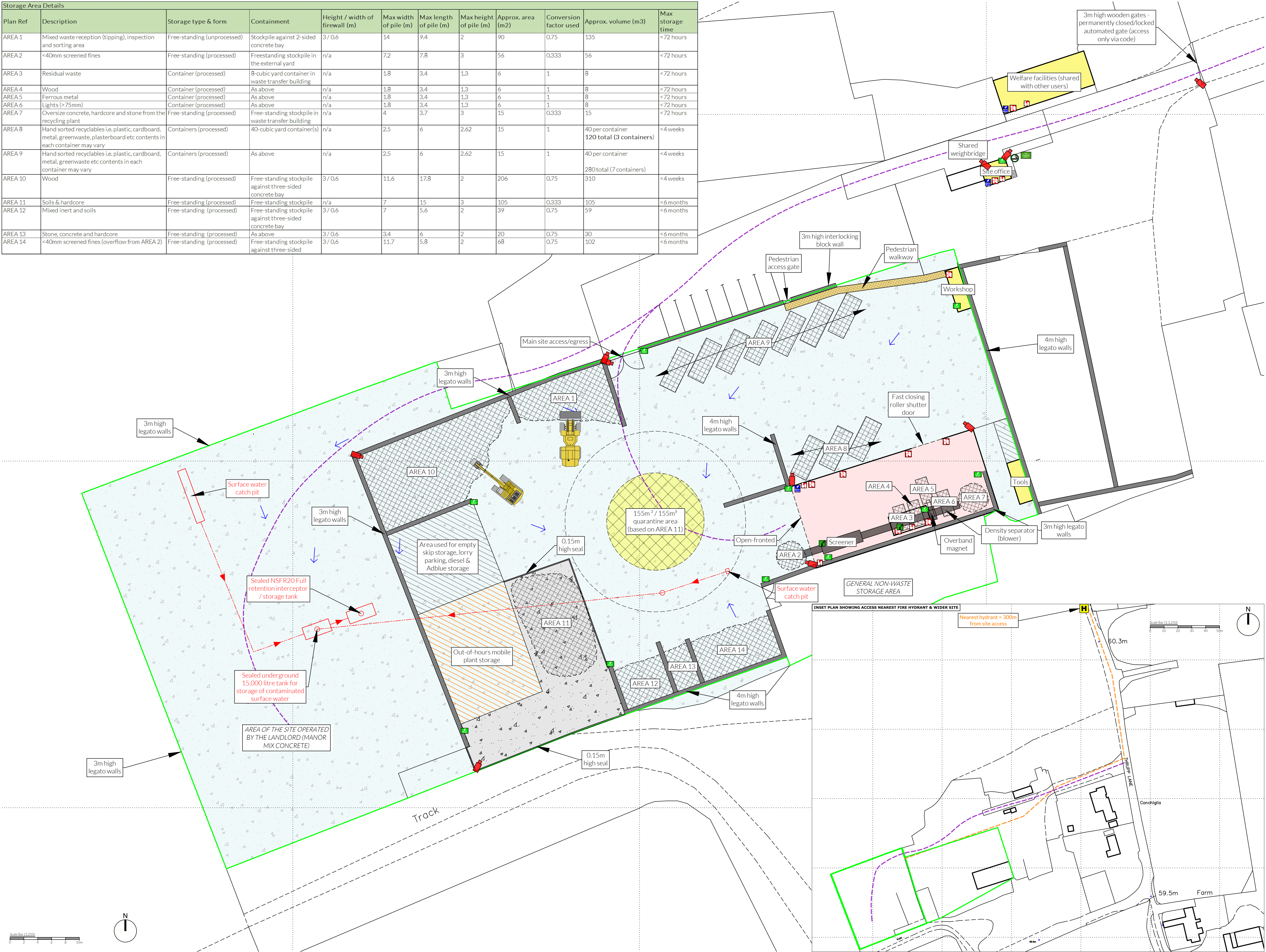
DATE:	DRAWN:	CHECKED:
08.12.25	EG	CP



Oaktree Environmental
Waste, Planning & Environmental Consultants



Storage Area Details											
Plan Ref	Description	Storage type & form	Containment	Height / width of firewall (m)	Max width of pile (m)	Max length of pile (m)	Max height of pile (m)	Approx. area (m2)	Conversion factor used	Approx. volume (m3)	Max storage time
AREA 1	Mixed waste reception (tipping), inspection and sorting area	Free-standing (unprocessed)	Stockpile against 2-sided concrete bay	3 / 0.6	14	9.4	2	90	0.75	135	< 72 hours
AREA 2	<40mm screened fines	Free-standing (processed)	Freestanding stockpile in the external yard	n/a	7.2	7.8	3	56	0.333	56	< 72 hours
AREA 3	Residual waste	Container (processed)	8-cubic yard container in waste transfer building	n/a	1.8	3.4	1.3	6	1	8	< 72 hours
AREA 4	Wood	Container (processed)	As above	n/a	1.8	3.4	1.3	6	1	8	< 72 hours
AREA 5	Ferrous metal	Container (processed)	As above	n/a	1.8	3.4	1.3	6	1	8	< 72 hours
AREA 6	Lights (>75mm)	Container (processed)	As above	n/a	1.8	3.4	1.3	6	1	8	< 72 hours
AREA 7	Oversize concrete, hardcore and stone from the recycling plant	Free-standing (processed)	Free-standing stockpile in waste transfer building	n/a	4	3.7	3	15	0.333	15	< 72 hours
AREA 8	Hand sorted recyclables i.e. plastic, cardboard, metal, greenwaste, plasterboard etc contents in each container may vary	Containers (processed)	40-cubic yard container(s)	n/a	2.5	6	2.62	15	1	40 per container 120 total (3 containers)	< 4 weeks
AREA 9	Hand sorted recyclables i.e. plastic, cardboard, metal, greenwaste etc contents in each container may vary	Containers (processed)	As above	n/a	2.5	6	2.62	15	1	40 per container 280 total (7 containers)	< 4 weeks
AREA 10	Wood	Free-standing (processed)	Free-standing stockpile against three-sided concrete bay	3 / 0.6	11.6	17.8	2	206	0.75	310	< 4 weeks
AREA 11	Soils & hardcore	Free-standing (processed)	Free-standing stockpile	n/a	7	15	3	105	0.333	105	< 6 months
AREA 12	Mixed inert and soils	Free-standing (processed)	Free-standing stockpile against three-sided concrete bay	3 / 0.6	7	5.6	2	39	0.75	59	< 6 months
AREA 13	Stone, concrete and hardcore	Free-standing (processed)	As above	3 / 0.6	3.4	6	2	20	0.75	30	< 6 months
AREA 14	<40mm screened fines (overflow from AREA 2)	Free-standing (processed)	Free-standing stockpile against three-sided	3 / 0.6	11.7	5.8	2	68	0.75	102	< 6 months



- NOTES
Drawing for indication only. Reproduced with the permission of the controller of H.M.S.O. Crown copyright licence No. 100022432. This drawing is copyright and property of Oaktree Environmental Ltd.
- REVISION HISTORY
- | Rev. | Date: | Int: | Description: |
|------|----------|------|-----------------|
| - | 08.12.25 | CP | Initial drawing |
- KEY:
- Permit boundary
 - Waste storage areas
 - Non-waste storage areas
 - Waste recycling / storage buildings (impermeable surface with sealed drainage)
 - Other buildings i.e. workshops/offices
 - Impermeable surface with sealed drainage
 - Hardstanding areas
 - Quarantine area
 - Contaminated surface water drainage
 - Surface water fall direction
 - Gully
 - Manhole / access chamber
 - Mains water
 - Designated smoking area
 - Firefighting equipment/extinguishers (indicative locations)
 - Fire alarms (indicative locations)
 - Spill kits (indicative locations)
 - Plant shut off
 - Access route for emergency services
 - Fire hydrant
 - Fire assembly point
 - Pan, tilt & zone cameras with 360° & 50m coverage
 - Out-of-hours plant storage

TITLE:
SITE LAYOUT & FIRE PLAN

CLIENT:
Oxford Skip Hire Ltd

PROJECT/SITE:
The Former Coal Yard, Thrupp Lane, Abingdon, Oxford
OX14 3NG

SCALE @ A1:
1:250

CLIENT NO:
2895

JOB NO:
015

DRAWING NO:
2895-THR-03

REV:
-

STATUS:
Issued

DATE:
08.12.25

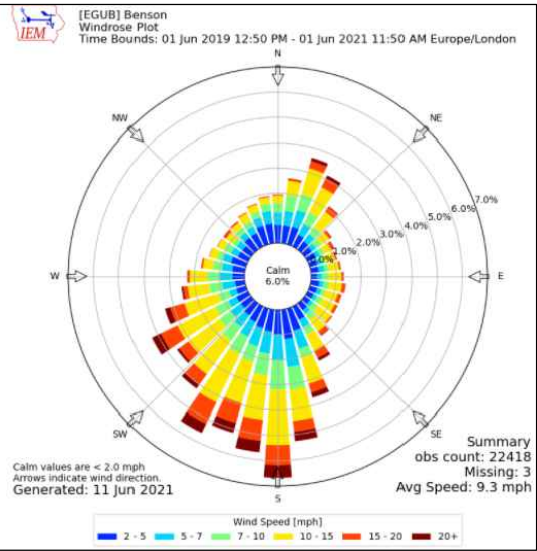
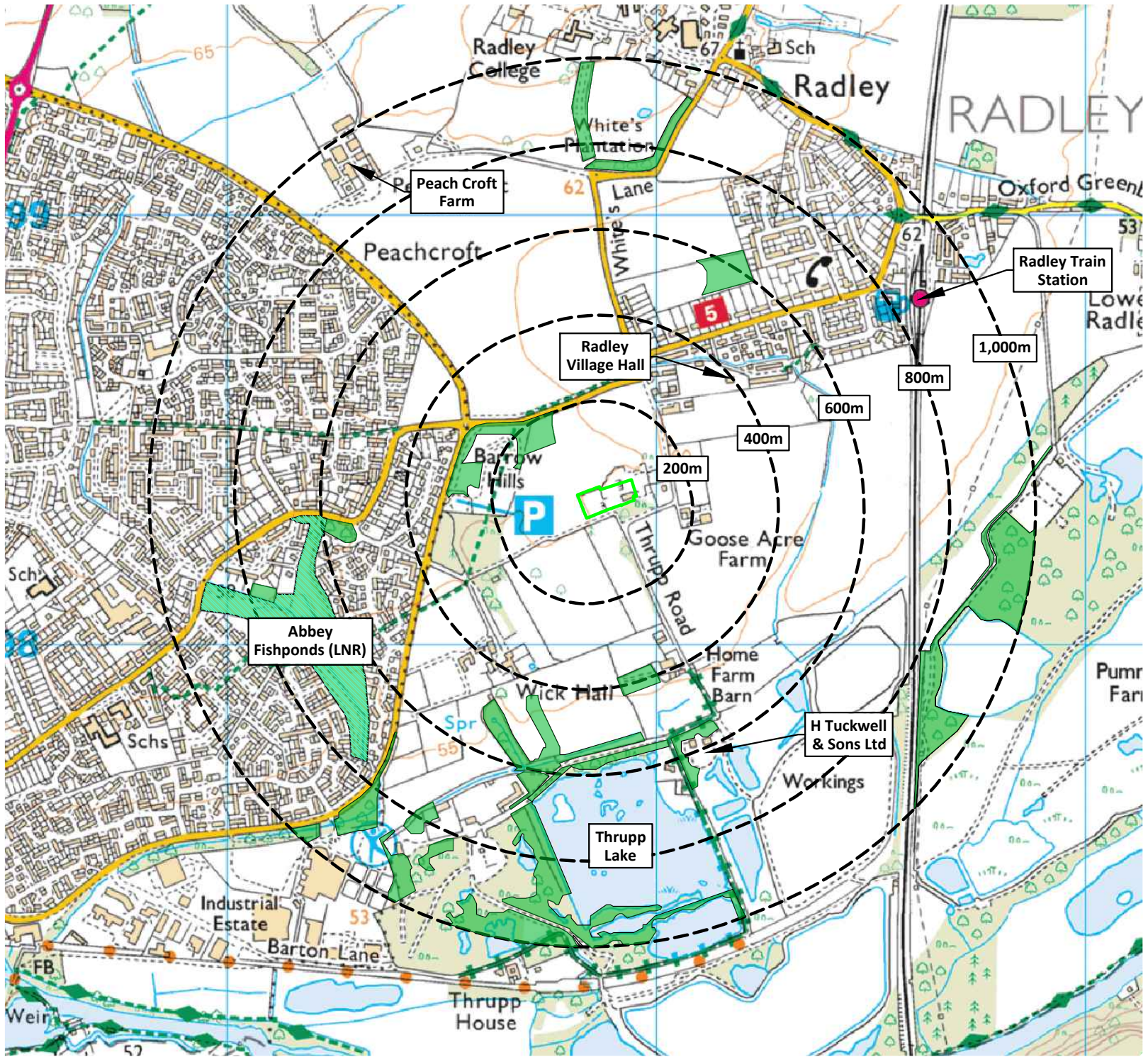
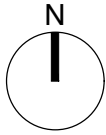
DRAWN:
CP

CHECKED:
OSH



KEY:

- Permit boundary
- Surface water body (pond / pool / lake)
- Stream, river, beck
- Buildings includes Agricultural, industry, commerce and retail - could also include small houses)
- Residential blocks
- Class A roads
- Class B roads
- Class C roads
- Priority Habitat - Deciduous Woodland
- Local Nature Reserve (Abbey Fishponds)
- SCH Schools including primary, high, colleges and Universities
- CH Care homes
- Places of worship
- Fire hydrants (indicative)



Compass Wind Rose for Benson (nr. Wallingford)
(EGCC) Period 2019-2021
- source: Iowa State University

NOTES

- Boundaries are shown indicatively.
 - Wind rose data shows the prevailing wind direction to be Southerly.
- Drawing for indication only. Reproduced with the permission of the controller of H.M.S.O. © Crown Copyright and database rights 2025. OS AS0000813445. This drawing is copyright and property of Oaktree Environmental Ltd.

REVISION HISTORY

Rev:	Date:	Init:	Description:
- A	17.06.21 08.12.25	CP EG	Initial drawing Permit variation

KEY:

- Permit boundary

TITLE:

RECEPTOR PLAN

CLIENT:

Oxford Skip Hire Ltd

PROJECT/SITE:

The Former Coal Yard, Thrupp Lane, Abingdon,
Oxfordshire, OX14 3NG

SCALE @ A3:

1:12,500

CLIENT NO:

2895

JOB NO:

015

DRAWING NO:

2895-THR-04

REV:

A

STATUS:

Issued

DATE:

08.12.25

DRAWN:

CP

CHECKED:

--



Appendix II

Inspection Checklist

OXFORD SKIP HIRE LTD
SITE INSPECTION FORM – THR/RF/4

WEEK STARTING									
TYPE OF INSPECTION		FREQ	DAY						
			M	T	W	T	F	S	S
SITE ENTRANCE/NOTICE BOARD		WEEKLY							
SECURITY - GATES		WEEKLY							
SECURITY - FENCING		WEEKLY							
SITE ROADS (CLEAR FROM HAZARDS)		DAILY							
WATER DRAINING (FUNCTIONING)		DAILY							
WASTE CONTAINERS		DAILY							
WASTE STORAGE LIMITS	SOILS	WEEKLY							
WASTE STORAGE LIMITS	HARDCORE	WEEKLY							
WASTE STORAGE LIMITS	OTHER	WEEKLY							
REJECTED WASTE TYPES / STORAGE		WEEKLY							
NOISE LEVELS		DAILY							
FIRES (ANY INCIDENTS REPORTED)		DAILY							
NO SMOKING SIGNS IN PLACE		MONTHLY							
SPILLAGES & ABSORBENTS		DAILY							
FUEL TANK/BUND INTEGRITY		WEEKLY							
LITTER		DAILY							
DUST		DAILY							
ODOUR		DAILY							
VERMIN		DAILY							
RECORDS		WEEKLY							
COMPLAINTS RECEIVED		AS REQUIRED							
OTHER (SEE NOTES BELOW)		AS REQUIRED							
INSPECTION CARRIED OUT BY									
NOTES/ACTION (CONTINUE ON A SEPARATE SHEET IF NECESSARY):									
CHECKED BY					SIGNATURE				
POSITION					DATE				
Sheet					of				

Appendix III

Complaints Form

OXFORD SKIP HIRE LTD
COMPLAINTS REPORT FORM (THR/RF/7)

Date Recorded:		Reference Number:	
Name and address of caller			
Telephone number of caller			
Time and Date of call			
Nature of complaint (noise, odour, dust, other) (date, time, duration)			
Weather at the time of complaint (rain, snow, fog, etc.)			
Wind (strength, direction)			
Any other complaints relating to this report			
Any other relevant information			
Potential reasons for complaint			
The operations being carried out on site at the time of the complaint			
Follow Up			
Actions taken			
Date of call back to complainant			
Summary of call back conversation			
Recommendations			
Change in procedures			
Changes to Environmental Management System (EMS)			
Date changes implemented			
Form completed by (Print)		Signed	
Date Completed			

Appendix IV

Dust Monitoring Form

OXFORD SKIP HIRE LTD DUST MONITORING FORM				
WEEK BEGINNING				
DAY/DATE/TIME OF INSPECTION				
SHEET 1 OF	COMMENTS BELOW (AS MUCH DETAIL AS POSSIBLE); IF COMMENT IS NO – ADD FURTHER COMMENTS			
DAILY RECORDING INFORMATION	DUST MONITORING POINT 1	DUST MONITORING POINT 2	DUST MONITORING POINT 3	OTHER AREA OF SITE - SPECIFY
WEATHER CONDITIONS				
WEATHER TEMPERATURE				
WIND SPEED				
WIND DIRECTION				
PERIMETER INFRASTRUCTURE SUITABLE				
WATER JET SYSTEM FUNCTIONING				
ARE WASTE STORAGE STOCKPILES BELOW 5m				
DUSTY MATERIAL STORAGE VISIBLE FROM LOCATION				
ANY NOTICEABLE DUST / PARTICULATES ON THE GROUND NEAR THE LOCATION				
ANY DUST APPARENT OFF SITE				
EMISSIONS FROM PLANT/EQUIPMENT VISIBLE				
SMOKE FROM PLANT APPEAR TO BE SUITABLE				
HAS SITE MANAGEMENT BEEN INFORMED OF THE INSPECTION				
DOES ACTION NEED TO BE TAKEN				
INSPECTION CARRIED OUT BY				
OTHER				
NOTES/ACTION (CONTINUE ON A SEPARATE SHEET IF NECESSARY):				
CHECKED BY		SIGNATURE		
POSITION		DATE		