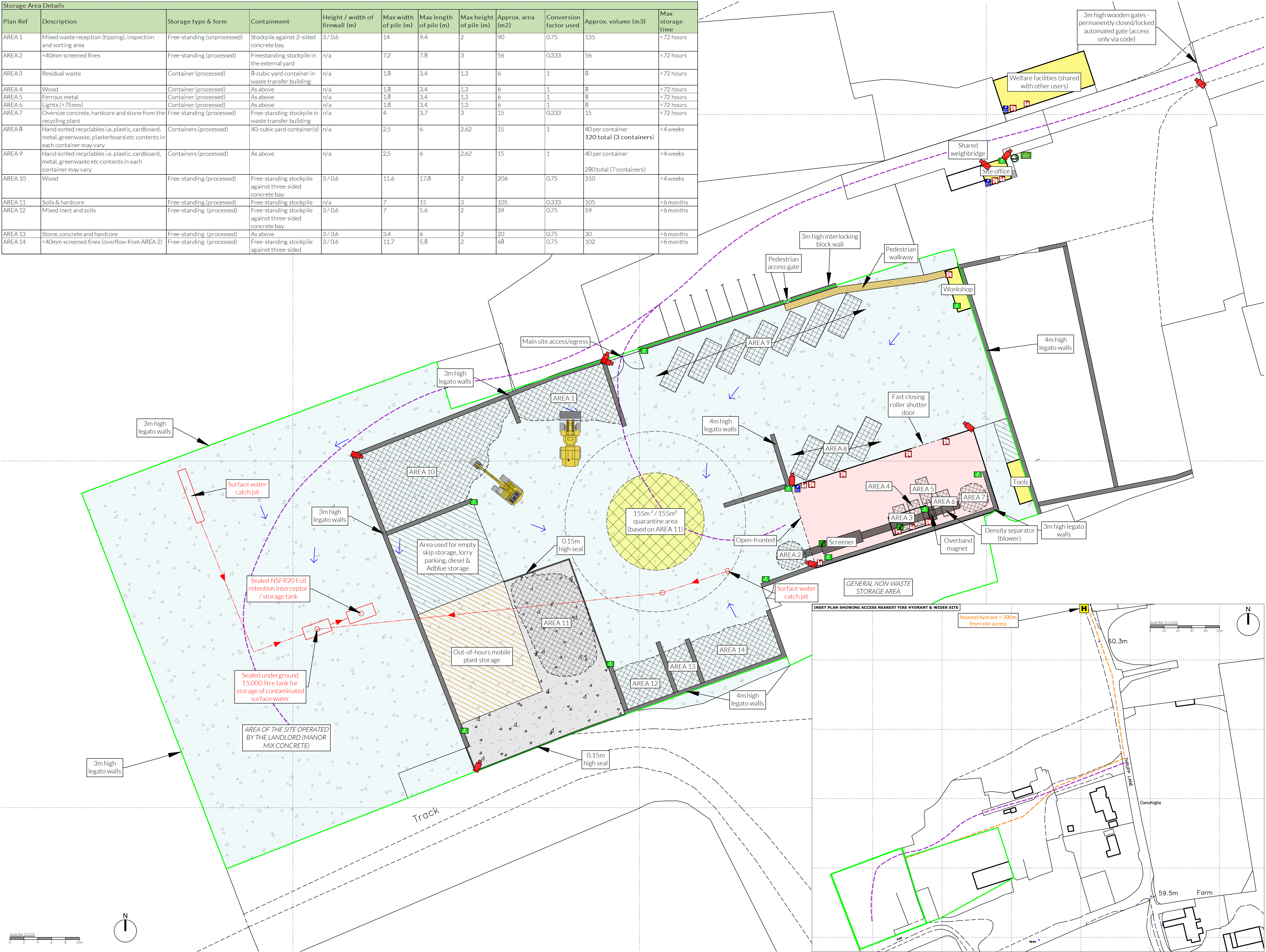


Storage Area Details											
Plan Ref	Description	Storage type & form	Containment	Height / width of firewall (m)	Max width of pile (m)	Max length of pile (m)	Max height of pile (m)	Approx. area (m2)	Conversion factor used	Approx. volume (m3)	Max storage time
AREA 1	Mixed waste reception (tipping), inspection and sorting area	Free-standing (unprocessed)	Stockpile against 2-sided concrete bay	3 / 0.6	14	9.4	2	90	0.75	135	< 72 hours
AREA 2	<40mm screened fines	Free-standing (processed)	Freestanding stockpile in the external yard	n/a	7.2	7.8	3	56	0.333	56	< 72 hours
AREA 3	Residual waste	Container (processed)	8-cubic yard container in waste transfer building	n/a	1.8	3.4	1.3	6	1	8	< 72 hours
AREA 4	Wood	Container (processed)	As above	n/a	1.8	3.4	1.3	6	1	8	< 72 hours
AREA 5	Ferrous metal	Container (processed)	As above	n/a	1.8	3.4	1.3	6	1	8	< 72 hours
AREA 6	Lights (>75mm)	Container (processed)	As above	n/a	1.8	3.4	1.3	6	1	8	< 72 hours
AREA 7	Oversize concrete, hardcore and stone from the recycling plant	Free-standing (processed)	Free-standing stockpile in waste transfer building	n/a	4	3.7	3	15	0.333	15	< 72 hours
AREA 8	Hand sorted recyclables i.e. plastic, cardboard, metal, greenwaste, plasterboard etc contents in each container may vary	Containers (processed)	40-cubic yard container(s)	n/a	2.5	6	2.62	15	1	40 per container 120 total (3 containers)	< 4 weeks
AREA 9	Hand sorted recyclables i.e. plastic, cardboard, metal, greenwaste etc contents in each container may vary	Containers (processed)	As above	n/a	2.5	6	2.62	15	1	40 per container 280 total (7 containers)	< 4 weeks
AREA 10	Wood	Free-standing (processed)	Free-standing stockpile against three-sided concrete bay	3 / 0.6	11.6	17.8	2	206	0.75	310	< 4 weeks
AREA 11	Soils & hardcore	Free-standing (processed)	Free-standing stockpile	n/a	7	15	3	105	0.333	105	< 6 months
AREA 12	Mixed inert and soils	Free-standing (processed)	Free-standing stockpile against three-sided concrete bay	3 / 0.6	7	5.6	2	39	0.75	59	< 6 months
AREA 13	Stone, concrete and hardcore	Free-standing (processed)	As above	3 / 0.6	3.4	6	2	20	0.75	30	< 6 months
AREA 14	<40mm screened fines (overflow from AREA 2)	Free-standing (processed)	Free-standing stockpile against three-sided	3 / 0.6	11.7	5.8	2	68	0.75	102	< 6 months



- NOTES  
Drawing for indication only. Reproduced with the permission of the controller of H.M.S.O. Crown copyright licence No. 100022432. This drawing is copyright and property of Oaktree Environmental Ltd.
- REVISION HISTORY
- | Rev. | Date:    | Int: | Description:    |
|------|----------|------|-----------------|
| -    | 08.12.25 | CP   | Initial drawing |
- KEY:
- Permit boundary
  - Waste storage areas
  - Non-waste storage areas
  - Waste recycling / storage buildings (impermeable surface with sealed drainage)
  - Other buildings i.e. workshops/offices
  - Impermeable surface with sealed drainage
  - Hardstanding areas
  - Quarantine area
  - Contaminated surface water drainage
  - Surface water fall direction
  - Gully
  - Manhole / access chamber
  - Mains water
  - Designated smoking area
  - Firefighting equipment/extinguishers (indicative locations)
  - Fire alarms (indicative locations)
  - Spill kits (indicative locations)
  - Plant shut off
  - Access route for emergency services
  - Fire hydrant
  - Fire assembly point
  - Pan, tilt & zone cameras with 360° & 50m coverage
  - Out-of-hours plant storage

TITLE: SITE LAYOUT & FIRE PLAN		
CLIENT: Oxford Skip Hire Ltd		
PROJECT/SITE: The Former Coal Yard, Thrupp Lane, Abingdon, Oxford OX14 3NG		
SCALE @ A1: 1:250	CLIENT NO: 2895	JOB NO: 015
DRAWING NO: 2895-THR-03	REV: -	STATUS: Issued
DATE: 08.12.25	DRAWN: CP	CHECKED: OSH

