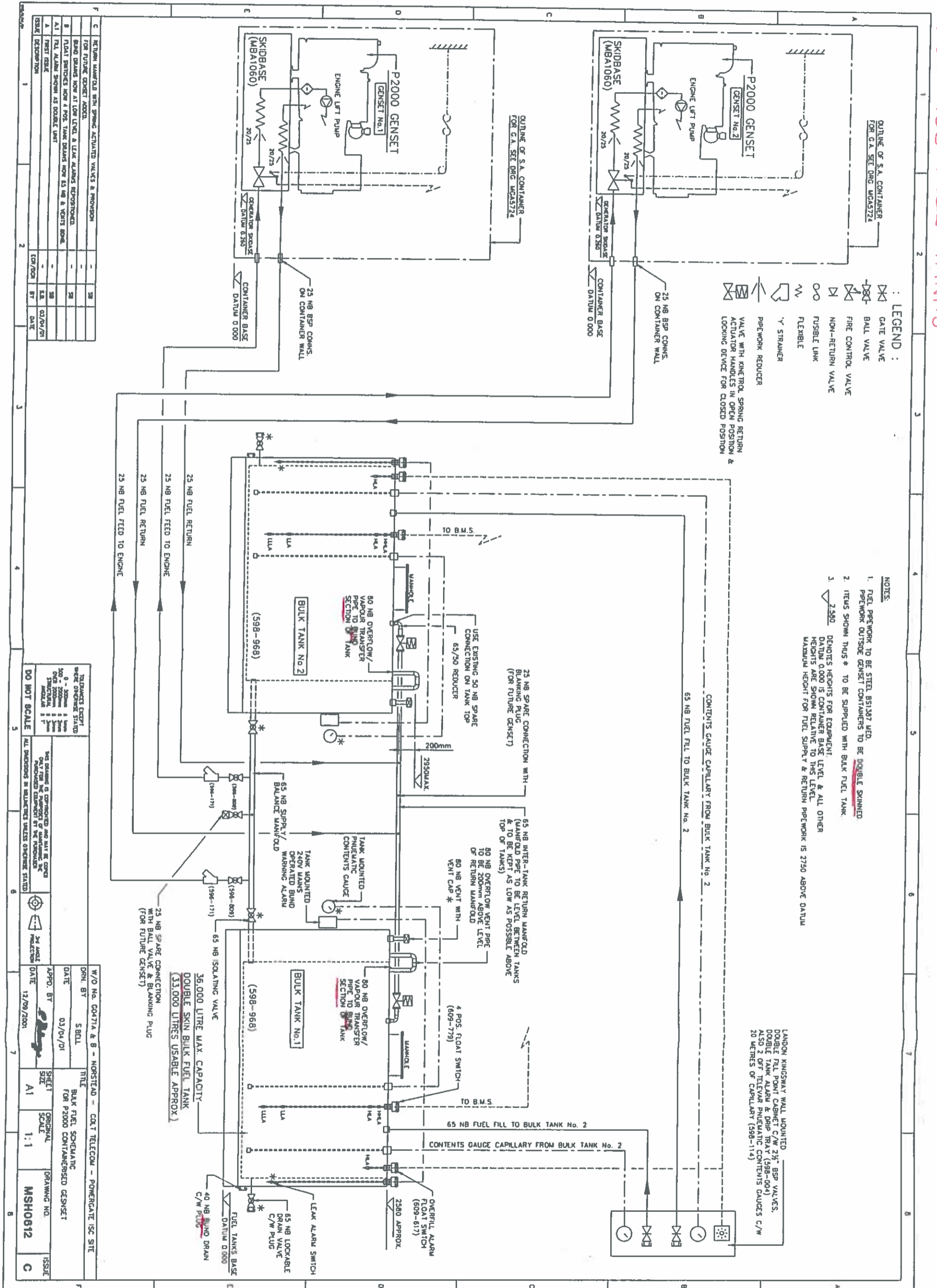


PGT 15C FUEL TANKS



- LEGEND :**
- ⊗ GATE VALVE
 - ⊘ BALL VALVE
 - ⊕ FIRE CONTROL VALVE
 - ⊖ NON-RETURN VALVE
 - ∞ FUSIBLE LINK
 - ∞ FLEXIBLE
 - ∞ STRAINER
 - ∞ PIPEWORK REDUCER
 - ∞ VALVE WITH KINETIC SPRING RETURN & ACTUATOR HANDLES IN OPEN POSITION & LOCKING DEVICE FOR CLOSED POSITION

- NOTES:**
- FUEL PIPEWORK TO BE STEEL BS1587 WTD. PIPEWORK OUTSIDE GENSET CONTAINERS TO BE DOUBLE SKINNED.
 - ITEMS SHOWN THUS * TO BE SUPPLIED WITH BULK FUEL TANK.
 - 2.580 DENOTES HEIGHTS FOR EQUIPMENT. DATUM 0.000 IS CONTAINER BASE LEVEL & ALL OTHER HEIGHTS ARE SHOWN RELATIVE TO THIS LEVEL. MAXIMUM HEIGHT FOR FUEL SUPPLY & RETURN PIPEWORK IS 2750 ABOVE DATUM.

LANDON KINGSMAY WALL MOUNTED DOUBLE FULL POINT CABINET C/W 2 1/2" BSP VALVES. ALSO 2 OF TELEVIEW PNEUMATIC CONTENTS GAUGES C/W 20 METRES OF CAPILLARY (598-114)

RETURN MANIFOLD WITH SPRING ACTUATED VALVES & PROVISION FOR FUTURE GENSET ADDON.

| ITEM | DESCRIPTION | QTY | UNIT | DATE |
|------|-----------------------------------|-----|------|------------|
| A1 | FUEL ALARM SHOWING AS DOUBLE UNIT | 2 | EA | 03/04/01 |
| A2 | FIRST ISSUE | 1 | EA | 12/09/2001 |

DO NOT SCALE

| W/O No. | DRN | BY | DATE | TITLE | SCALE | DRAWING NO. | ISSUE |
|---------------------|-------|-------|----------|---|-------|-------------|-------|
| 0471A & B - NDRSTAD | 58211 | SRELL | 03/04/01 | BULK FUEL SCHEMATIC FOR P2000 CONTAINERISED GENSSET | 1:1 | MSH0612 | C |