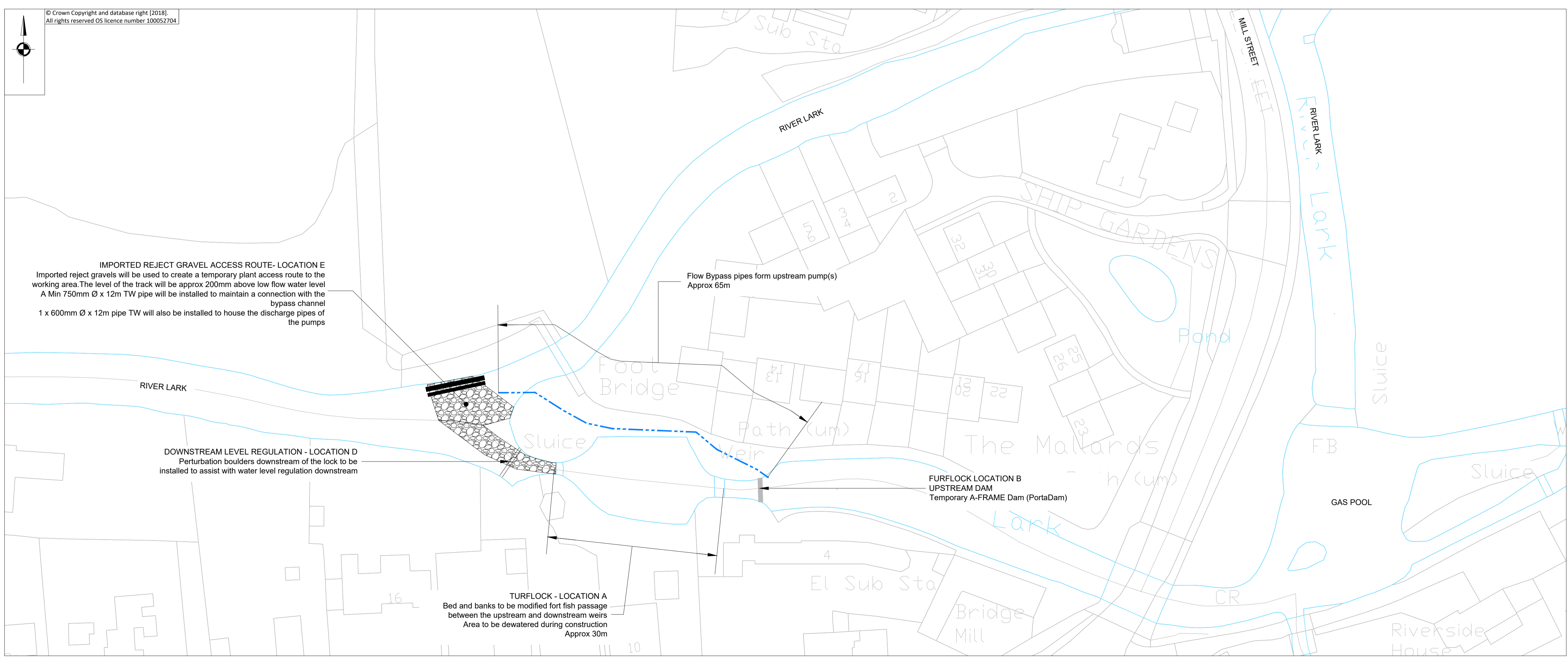


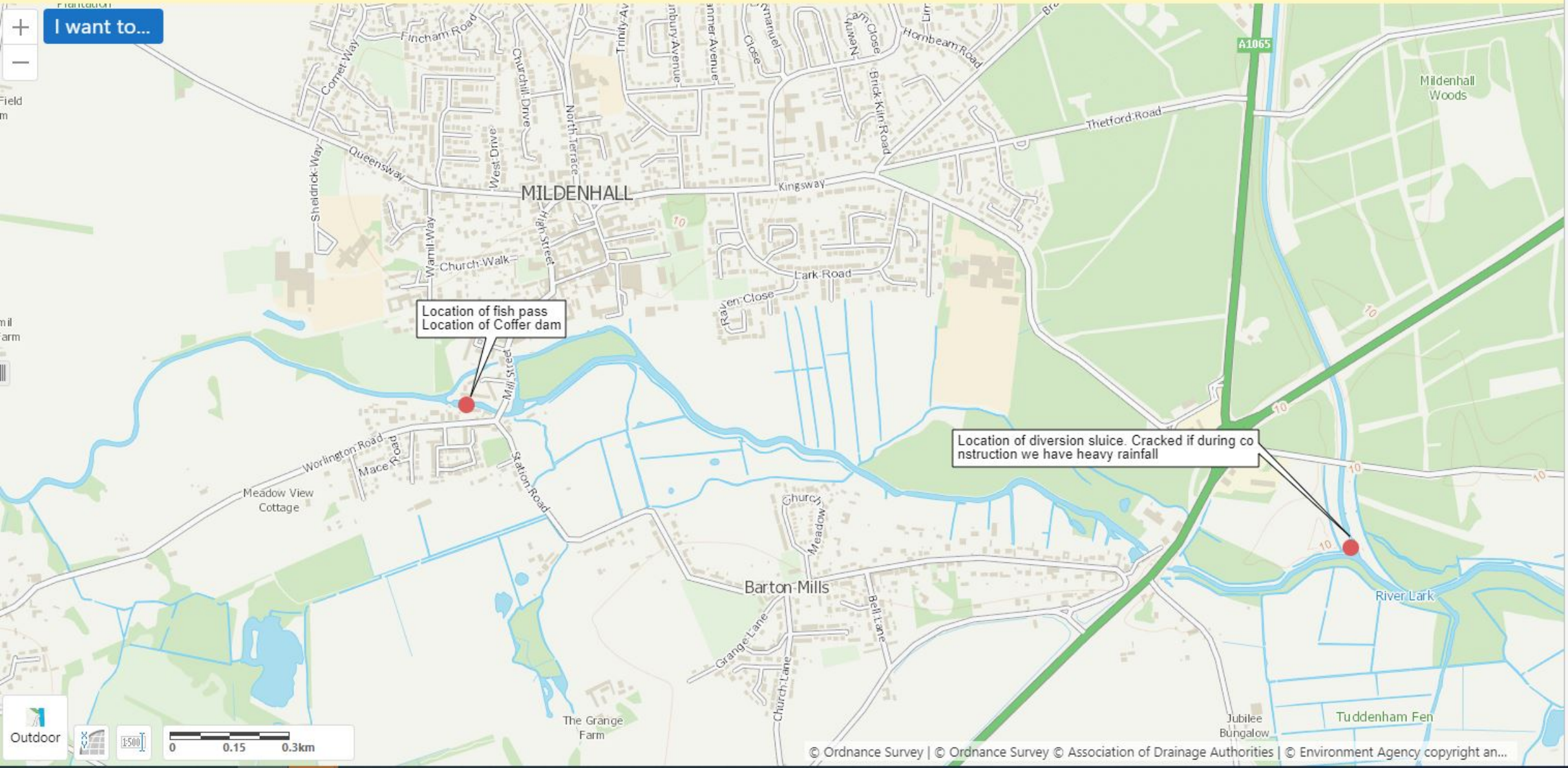
- Key:**
- EA Main River
 - - - Flow Diversion Pipes

- Notes:**
1. No dimensions to be scaled from this drawing.
 2. Drawing to be read in conjunction with Pre-Works Information, Risk Assessment and Method Statement
 3. Pumping operation based on a Q95 flow of 0.478m³/sec
 4. S300 Pump capacity of 0.305m³/s
 5. Any questions regarding the logistics and design of this work to be to Paul George on 07788 914392



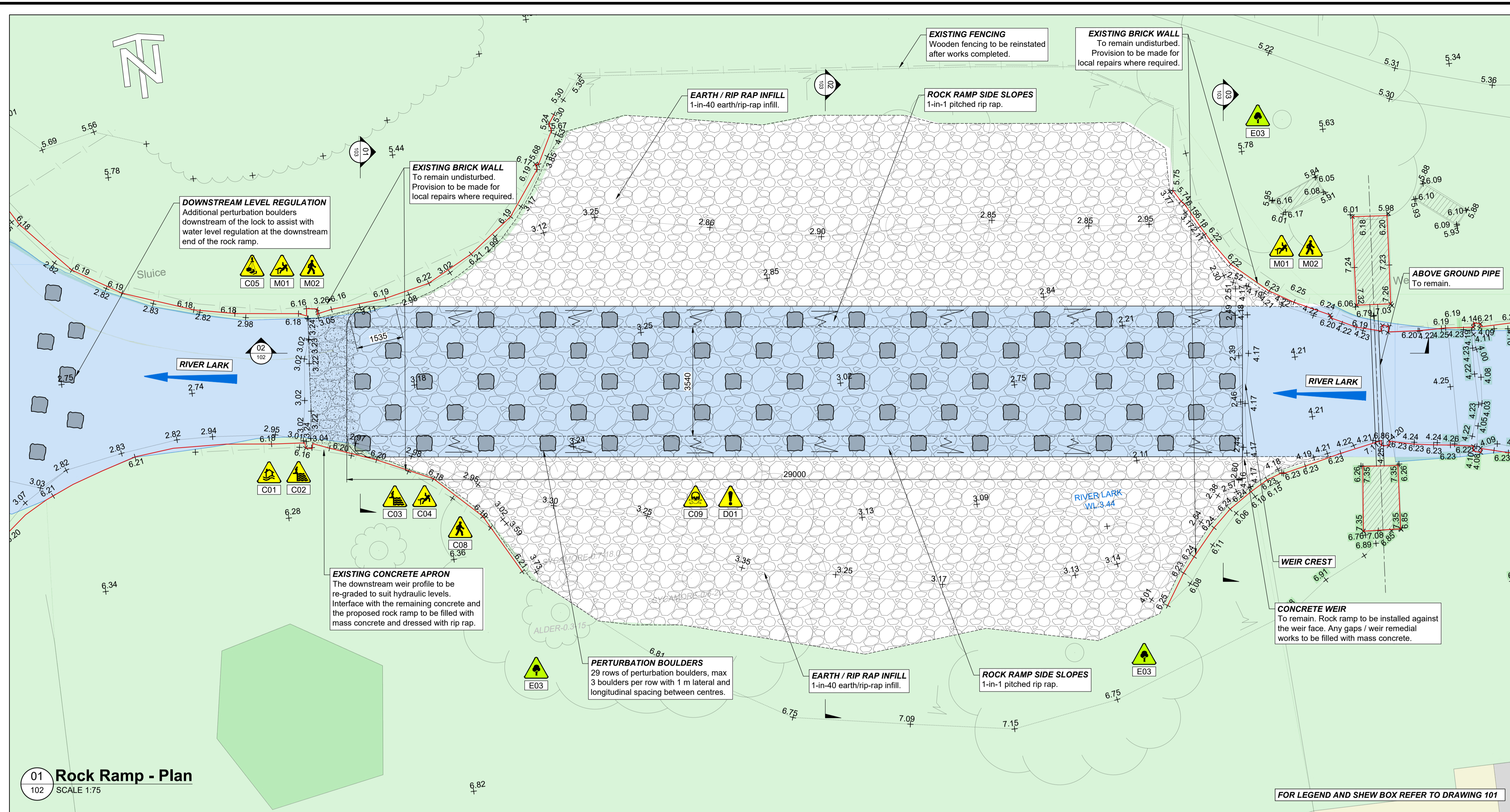
FOR
CONSULTATION

Rev	By	Chkd	Apprvd	Date	Description
Project: TURFLOCK MILDENHALL FISH PASS					
Drawing: IMPOUNDMENT AND WATER MANAGEMENT PLAN					
Drawn by: P.GEORGE Date: 06/02/2024					
Checked by: P.GEORGE Date: 07/02/2024					
Approved by: P.GEORGE Date: 07/02/2024					
Drawing No. TURFL/2024/200/002					Revision: 0
Drawing Scale: AS SHOWN @A1					

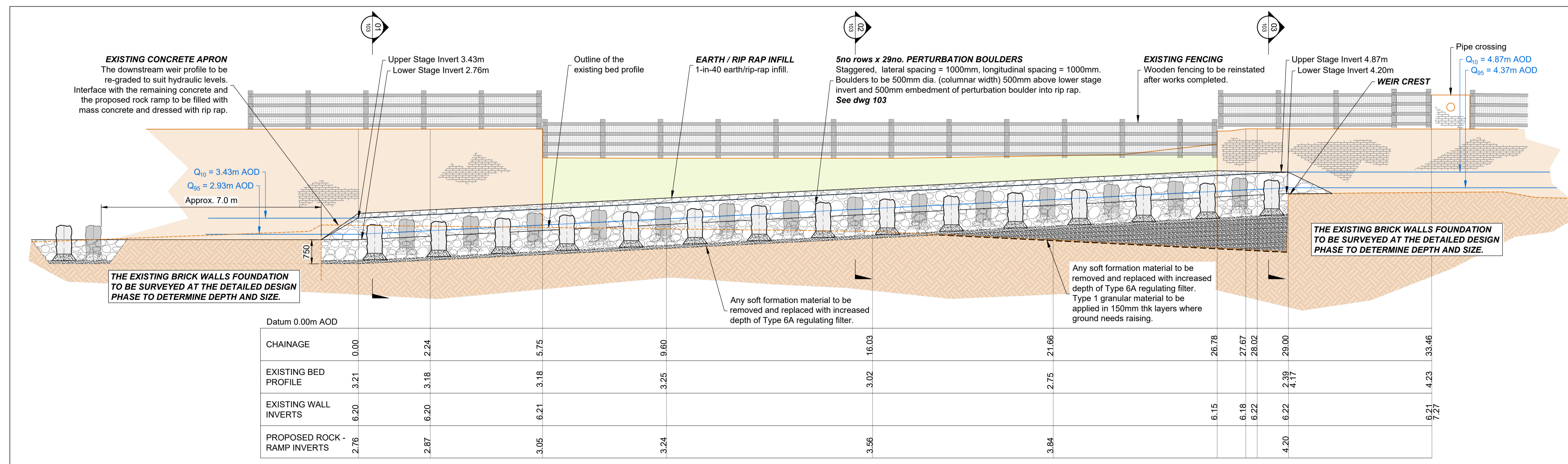


Location of fish pass
Location of Coffier dam

Location of diversion sluice. Cracked if during co
nstruction we have heavy rainfall



- ### GENERAL NOTES
- ALL DIMENSIONS ARE IN MILLIMETRES UNLESS NOTED OTHERWISE.
 - ALL LEVELS ARE IN METRES RELATIVE TO ORDNANCE DATUM NEWLYN (mAOD) UNLESS NOTED OTHERWISE.
 - ALL COORDINATES ARE IN METRES RELATIVE TO ORDNANCE SURVEY NATIONAL GRID.
 - DO NOT SCALE FROM THIS DRAWING. ALL DIMENSIONS MUST BE CHECKED / VERIFIED ON SITE.
 - TO BE READ IN CONJUNCTION WITH APPROPRIATE ADVANCED ARBORICULTURE - TREE PROTECTION STATEMENT
 - RIP RAP**
 - TO COMPRISE NATURAL HARD STONE WITH NOMINAL DENSITY OF 2700kg/m³.
 - NOMINAL INFILL & DRESSING OF TOPSOIL & GRASS SEEDING, OVER
 - RIP-RAP TARGET LAYER THICKNESS OF GRADED ROCK SUBJECT TO DETAILED DESIGN. RIP-RAP WITH MASS GRADING AS PER BS EN 13383-1:2013 TYPICALLY CATEGORY A STANDARD LIGHT GRADING OF LMA5/40
 - D50(cm) = 21 -26
 - M50(KG) = 12-25 - SUBJECT TO DETAILED DESIGN.
 - PERTURBATION BOULDERS**
 - TO COMPRISE NATURAL HARD STONE GLACIAL BOULDER OR QUARRIED BLOCKSTONE WITH NOMINAL DENSITY OF 2700kg/m³.
 - NOMINAL SIZE TO BE 500 X 500 X 1000, OF WT. 1050 - 1150kg.
 - NOMINAL FLAT BOTTOM FOR PLACEMENT ONTO REGULATING CONCRETE BED, OF CONSISTENCY CLASS S1, TO ACHIEVE STABLE BOULDER WITH 500mm FINISHED PROJECTION ABOVE RIP RAP.
 - TARGET EMBEDMENT OF PERTURBATION BOULDER INTO RIP RAP TO BE 500mm.
 - SET OUT WITH NOMINAL 1000mm CLEAR DISTANCE BETWEEN BOULDERS LATERALLY & LONGITUDINALLY.
 - EARTHWORKS**
 - ALL TOPSOIL REQUIRED FOR FILLING TO BE SOURCED FROM SITE EXCAVATIONS.
 - EXCAVATED TOPSOIL & SUB-SOIL ARISING FROM THE SITE, IN EXCESS OF REQUIREMENTS FOR BACKFILLING TO BE EXPORTED OFFSITE. TEMPORARY STOCKPILES TO BE NO GREATER THAN 2m HEIGHT.
 - NO STORAGE OF MATERIALS & ARISING TO BE STOCKPILES OR STORED WITHIN 8m OF WATERCOURSES.
 - LANDSCAPING:**
 - PLANTING OF TREES, HAWTHORN HEDGING PLANTS AND AQUATIC PLANTS IN MARGINAL ZONES IS SUBJECT TO SPECIALIST DESIGN BY OTHERS - NOT INCLUDED.
- THIS DESIGN HAS BEEN PREPARED FOR OUTLINE DESIGN PURPOSES TO SUPPORT THE NFPP FISH PASS APPLICATION. IT CONVEYS THE FORM AND TYPE OF FISH PASS AND THE HYDRAULIC CONTROLS TO ACHIEVE FISH PASSAGE AND IS NOT FOR CONSTRUCTION. THE OUTLINE DESIGN IS SUBJECT TO STRUCTURAL DESIGN DEVELOPMENT DURING THE DETAILED PHASE.**



P01	First Issue	2023.07.19	JSC	MD	PG	PG
Rev.	Description	Date	Author	Checker	Reviewer	Approver

Document Control

Supplier: **FISHTEK CONSULTING**
Fishtek Consulting
Unit 1A Webbers Way
Dartington, Tolnes
Devon, UK
TQ9 6JY
Tel: +44 (0)1803 866680
www.fishtek.co.uk
© Fishtek (2023)

Project Title: **TURF LOCK, SUFFOLK**

Drawing Title: **Rock Ramp General Arrangement**

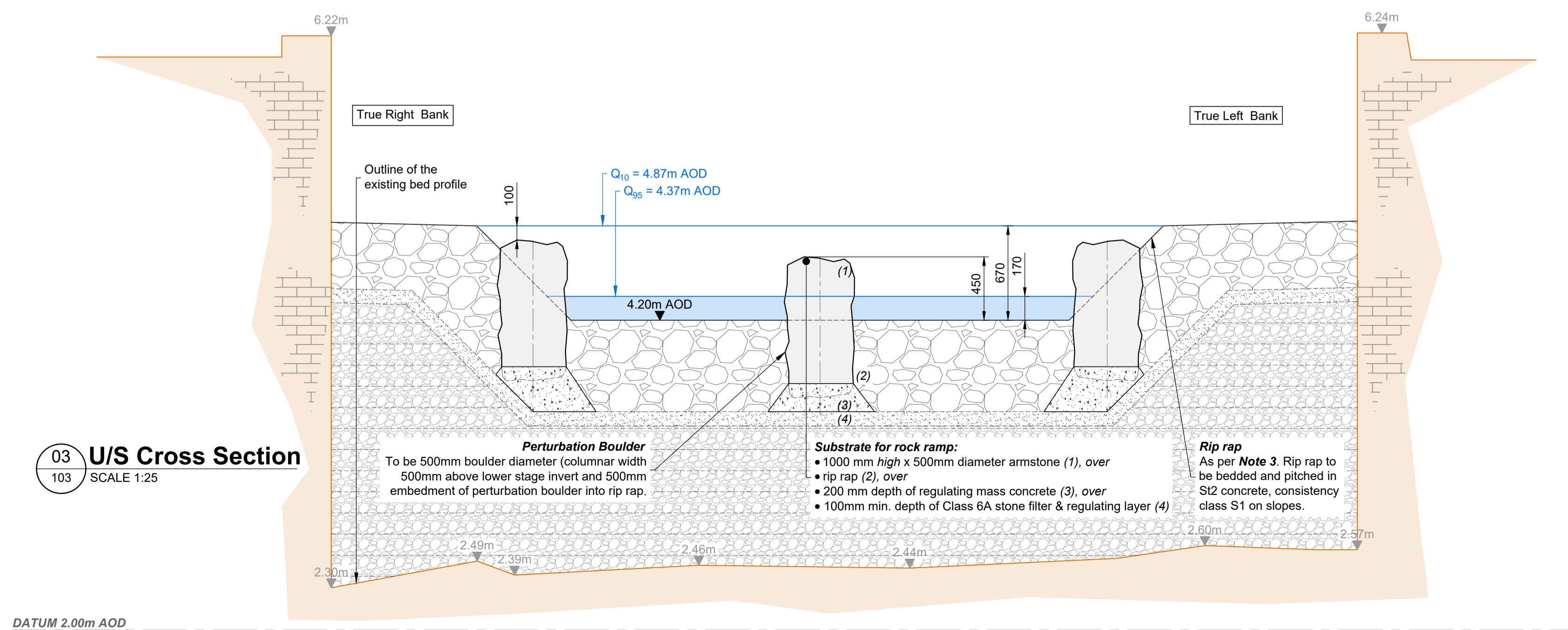
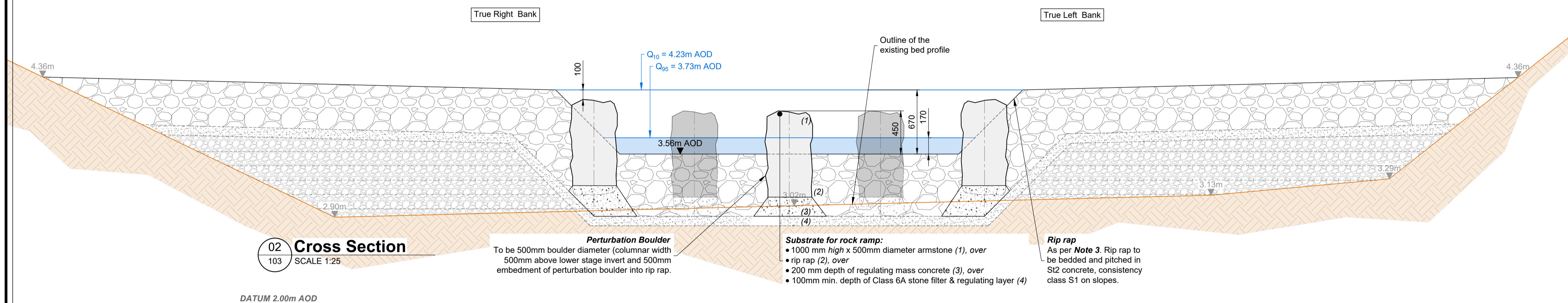
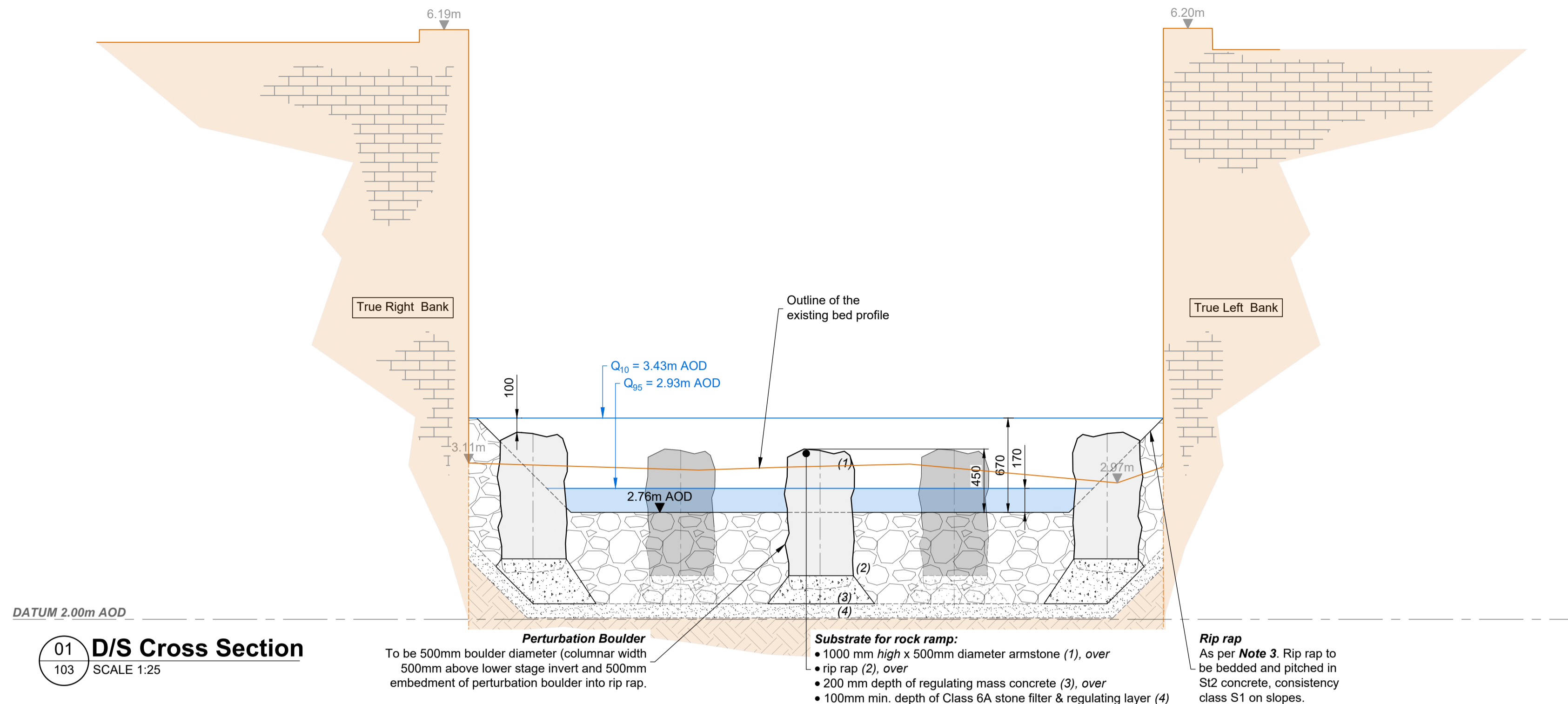
© copyright reserved

Parent Model: **NOT FROM MODEL**

Security Classification: **OFFICIAL**
Scale: **AS SHOWN**

Author: JSC	Checker: MD	Reviewer: PG	Approver: PG
-------------	-------------	--------------	--------------

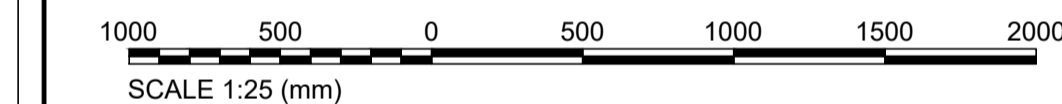
Suitability: **FOR REVIEW / COMMENT**
Information Container: **102 - 03259**
Status: **S3**
Revision: **P01**
A1 Sheet Size



GENERAL NOTES

- ALL DIMENSIONS ARE IN MILLIMETRES UNLESS NOTED OTHERWISE.
- ALL LEVELS ARE IN METRES RELATIVE TO ORDANCE DATUM NEWLYN (mAOD) UNLESS NOTED OTHERWISE.
- ALL COORDINATES ARE IN METRES RELATIVE TO ORDANCE SURVEY NATIONAL GRID.
- DO NOT SCALE FROM THIS DRAWING. ALL DIMENSIONS MUST BE CHECKED / VERIFIED ON SITE.
- TO BE READ IN CONJUNCTION WITH APPROPRIATE ADVANCED ARBORICULTURE - TREE PROTECTION STATEMENT
- RIP RAP**
 - TO COMPRISE NATURAL HARD STONE WITH NOMINAL DENSITY OF 2700kg/m³.
 - NOMINAL INFILL & DRESSING OF TOPSOIL & GRASS SEEDING; OVER
 - RIP-RAP TARGET LAYER THICKNESS OF GRADED ROCK SUBJECT TO DETAILED DESIGN. RIP-RAP WITH MASS GRADING AS PER BS EN 13383-1:2013 TYPICALLY CATEGORY A STANDARD LIGHT GRADING OF LMA5/40
 - D50(cm) = 21 -26
 - M50(KG) = 12 -25 - SUBJECT TO DETAILED DESIGN.
- PERTURBATION BOULDERS**
 - TO COMPRISE NATURAL HARD STONE GLACIAL BOULDER OR QUARRIED BLOCKSTONE WITH NOMINAL DENSITY OF 2700kg/m³.
 - NOMINAL SIZE TO BE 500 X 500 X 1000, OF WT. 1050 - 1150kg.
 - NOMINAL FLAT BOTTOM FOR PLACEMENT ONTO REGULATING CONCRETE BED, OF CONSISTENCY CLASS S1, TO ACHIEVE STABLE BOULDER WITH 500mm FINISHED PROJECTION ABOVE RIP RAP.
 - TARGET EMBEDMENT OF PERTURBATION BOULDER INTO RIP RAP TO BE 500mm.
 - SET OUT WITH NOMINAL 1000mm CLEAR DISTANCE BETWEEN BOULDERS LATERALLY & LONGITUDINALLY.
- EARTHWORKS**
 - ALL TOPSOIL REQUIRED FOR FILLING TO BE SOURCED FROM SITE EXCAVATIONS.
 - EXCAVATED TOPSOIL & SUB-SOIL ARISING FROM THE SITE, IN EXCESS OF REQUIREMENTS FOR BACKFILLING TO BE EXPORTED OFFSITE. TEMPORARY STOCKPILES TO BE NO GREATER THAN 2m HEIGHT.
 - NO STORAGE OF MATERIALS & ARISING TO BE STOCKPILES OR STORED WITHIN 8m OF WATERCOURSES.
- LANDSCAPING:**
 - PLANTING OF TREES, HAWTHORN HEDGING PLANTS AND AQUATIC PLANTS IN MARGINAL ZONES IS SUBJECT TO SPECIALIST DESIGN BY OTHERS - NOT INCLUDED.

THIS DESIGN HAS BEEN PREPARED FOR OUTLINE DESIGN PURPOSES TO SUPPORT THE NFPP FISH PASS APPLICATION. IT CONVEYS THE FORM AND TYPE OF FISH PASS AND THE HYDRAULIC CONTROLS TO ACHIEVE FISH PASSAGE AND IS NOT FOR CONSTRUCTION. THE OUTLINE DESIGN IS SUBJECT TO STRUCTURAL DESIGN DEVELOPMENT DURING THE DETAILED PHASE.



P01	First Issue	2023.07.19	JSC	MD	PG	PG
Rev.	Description	Date	Author	Checker	Reviewer	Approver

Supplier

FISHTEK CONSULTING

Fishtek Consulting
Unit 1A Webbers Way
Dartington, Tolnes
Devon, UK
TQ9 6JY

Tel: +44 (0)1803 866680
www.fishtek.co.uk

© Fishtek (2023)

Project Title

TURF LOCK, SUFFOLK

Drawing Title

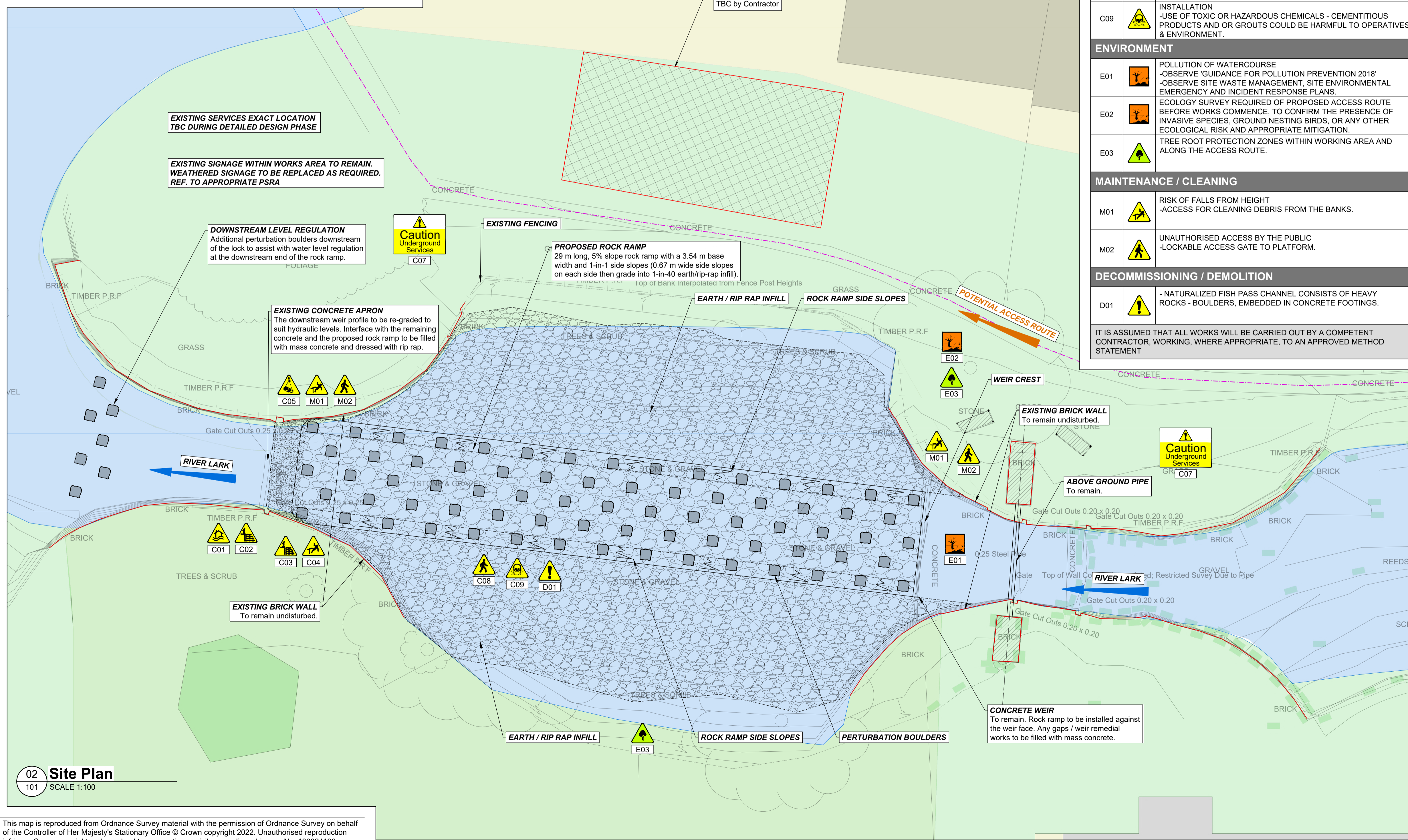
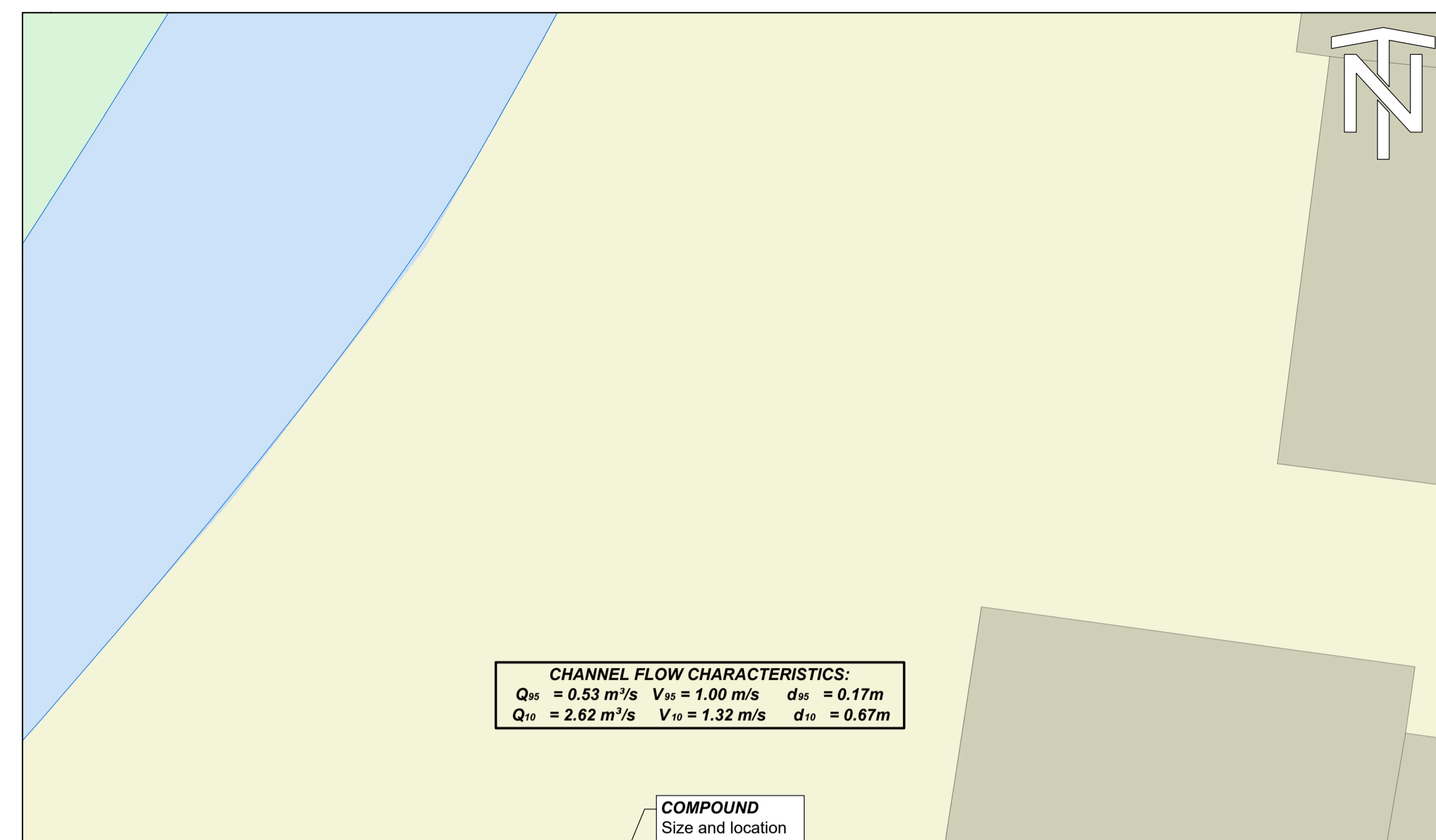
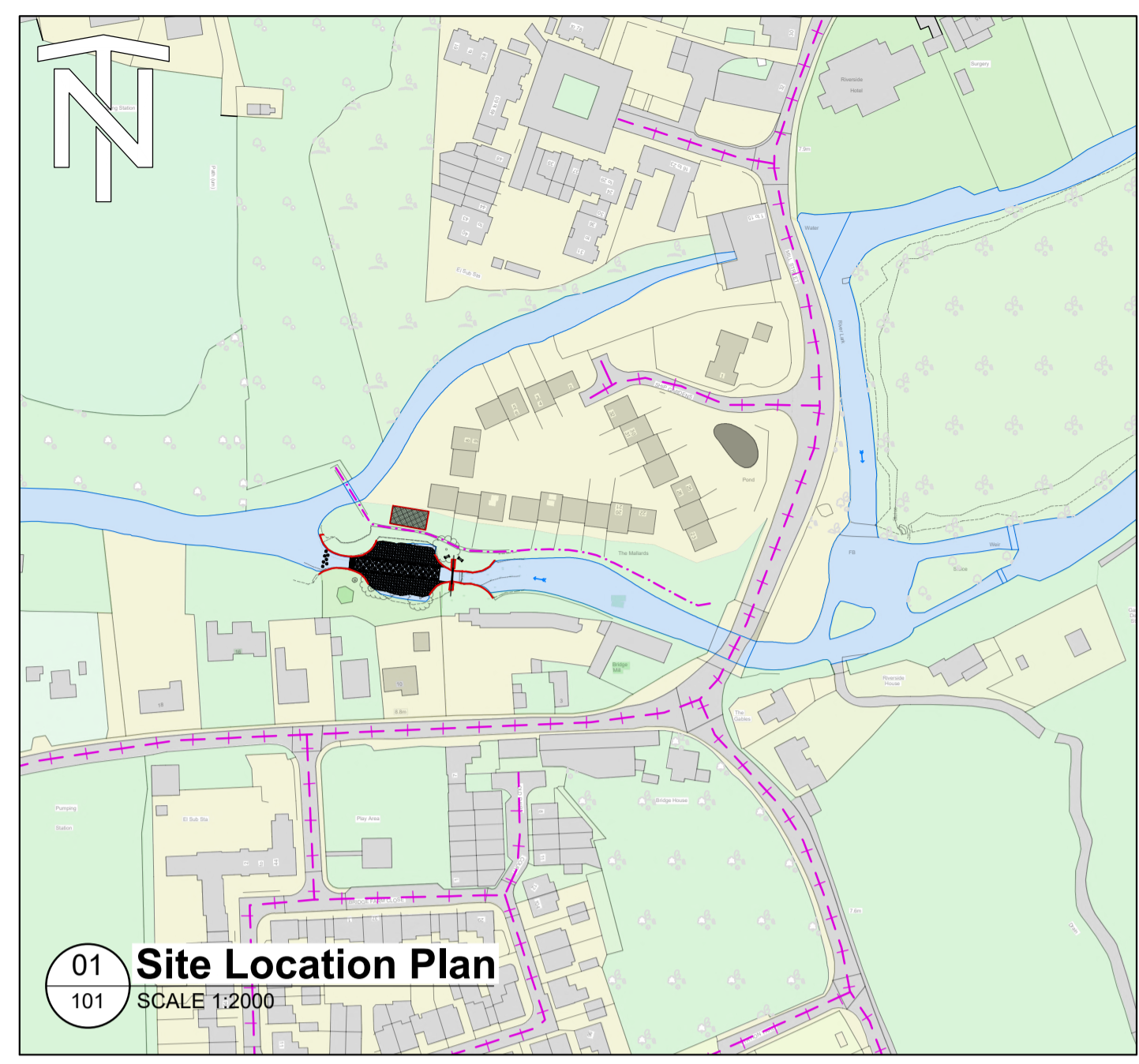
Rock Ramp Sections



Parent Model

NOT FROM MODEL

Security Classification	Scale		
OFFICIAL	AS SHOWN		
Author	Checker	Reviewer	Approver
JSC	MD	PG	PG
Suitability	Status	Revision	
FOR REVIEW / COMMENT	S3	P01	
Information Container	A1 Sheet Size		
103 - 03259			



SAFETY, HEALTH, ENVIRONMENTAL, AND WELFARE INFORMATION

IN ADDITION TO THE HAZARDS / RISKS NORMALLY ASSOCIATED WITH THE TYPES OF WORK DETAILED ON THIS DRAWING, NOTE THE FOLLOWING SIGNIFICANT RISKS:

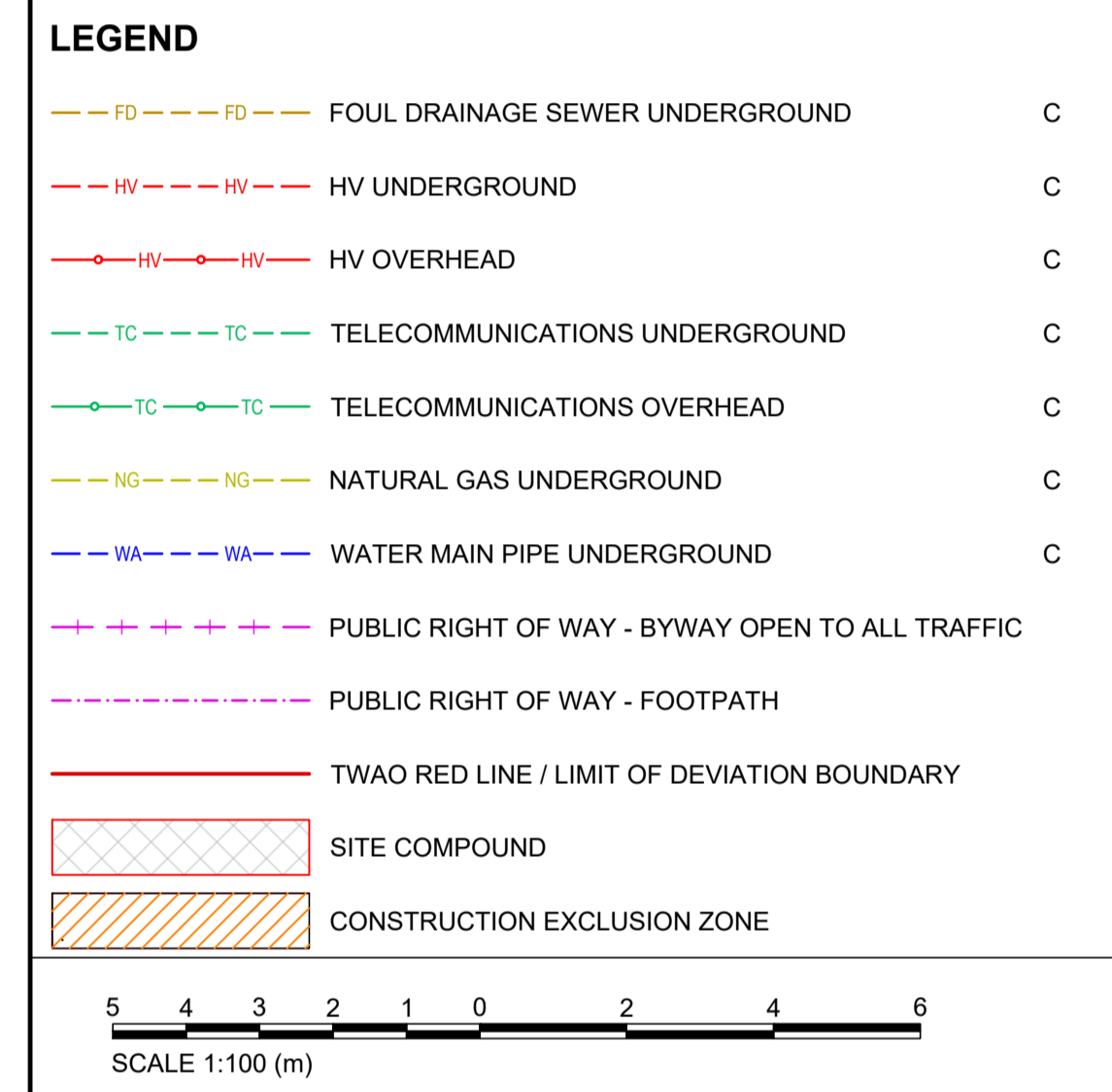
CONSTRUCTION	
C01	MANAGING FLOW & STAGE LEVELS IN RIVER LARK. - MONITOR RIVER LEVELS & EA FLOOD WARNINGS. - OBSERVE EGRESS AND EVACUATION PLAN FROM COFFERDAM.
C02	MANAGING SEEPAGE FLOWS - MONITOR SEEPAGE AND CONDITION OF COFFERDAM. - CHECK THAT PUMPING CAPACITY EXCEEDS SEEPAGE INFLOW.
C03	WORKING NEAR WATER - FISH PASS INSTALLATION WORKS WITHIN RIVER AREA. - CHECK APPROPRIATE SAFETY EQUIPMENT & ACCESS POINTS. - ASSESS BANK STABILITY / CONDITIONS CONSIDERING ACCESS.
C04	RISK OF FALLS FROM HEIGHT - CHECK ADEQUATE PROVISION OF GUARD RAILS AND ACCESS POINTS.
C05	ACCESS & LIFTING - AGREE AN ACCESS THROUGH THE LAND WITH THE LAND OWNER. - CHECK CRANE PAD HAS BEEN SIGNED-OFF PRIOR TO USE. - STRICTLY OBSERVE LIFTING PLANS.
C06	RISK OF SERVICES STRIKES - OVERHEAD HIGH VOLTAGE CABLES NEAR WORKING AREA AND ACCESS ROUTE CAN BE SEEN. - CHECK FOR IDENTIFIED / UNIDENTIFIED SERVICES BY REVIEW OF PCI, CATSCAN & GPR SURVEY & MARK-UP PRIOR TO START OF WORKS.
C07	RISK OF SERVICES STRIKES - UNDERGROUND CABLES IDENTIFIED ON UTILITIES SEARCH. - CHECK FOR IDENTIFIED / UNIDENTIFIED SERVICES BY REVIEW OF PCI, CATSCAN & GPR SURVEY & MARK-UP PRIOR TO START OF WORKS.
C08	INTERFACE WITH PUBLIC - PUBLIC FOOTPATH - TEMPORARY CLOSURE WILL BE REQUIRED. - ERECT SECURE HERAS FENCING WITH LOCKABLE GATES AROUND THE SITE COMPOUND AND BANKSIDE WORKING AREA.
C09	INSTALLATION - USE OF TOXIC OR HAZARDOUS CHEMICALS - CEMENTITIOUS PRODUCTS AND OR GROUTS COULD BE HARMFUL TO OPERATIVES & ENVIRONMENT.
ENVIRONMENT	
E01	POLLUTION OF WATERCOURSE - OBSERVE 'GUIDANCE FOR POLLUTION PREVENTION 2018' - OBSERVE SITE WASTE MANAGEMENT, SITE ENVIRONMENTAL EMERGENCY AND INCIDENT RESPONSE PLANS.
E02	ECOLOGY SURVEY REQUIRED OF PROPOSED ACCESS ROUTE BEFORE WORKS COMMENCE. TO CONFIRM THE PRESENCE OF INVASIVE SPECIES, GROUND NESTING BIRDS, OR ANY OTHER ECOLOGICAL RISK AND APPROPRIATE MITIGATION.
E03	TREE ROOT PROTECTION ZONES WITHIN WORKING AREA AND ALONG THE ACCESS ROUTE.
MAINTENANCE / CLEANING	
M01	RISK OF FALLS FROM HEIGHT - ACCESS FOR CLEANING DEBRIS FROM THE BANKS.
M02	UNAUTHORISED ACCESS BY THE PUBLIC - LOCKABLE ACCESS GATE TO PLATFORM.
DECOMMISSIONING / DEMOLITION	
D01	- NATURALIZED FISH PASS CHANNEL CONSISTS OF HEAVY ROCKS - BOULDERS, EMBEDDED IN CONCRETE FOOTINGS.

IT IS ASSUMED THAT ALL WORKS WILL BE CARRIED OUT BY A COMPETENT CONTRACTOR, WORKING, WHERE APPROPRIATE, TO AN APPROVED METHOD STATEMENT

- GENERAL NOTES**
- ALL DIMENSIONS ARE IN MILLIMETRES UNLESS NOTED OTHERWISE.
 - ALL LEVELS ARE IN METRES RELATIVE TO ORDNANCE DATUM NEWLYN (mAOD) UNLESS NOTED OTHERWISE.
 - ALL COORDINATES ARE IN METRES RELATIVE TO ORDNANCE SURVEY NATIONAL GRID.
 - DO NOT SCALE FROM THIS DRAWING. ALL DIMENSIONS MUST BE CHECKED / VERIFIED ON SITE.
 - TO BE READ IN CONJUNCTION WITH APPROPRIATE ADVANCED ARBORICULTURE - TREE PROTECTION STATEMENT

LEGEND

FD	FOUL DRAINAGE SEWER UNDERGROUND	C
HV	HV UNDERGROUND	C
HV	HV OVERHEAD	C
TC	TELECOMMUNICATIONS UNDERGROUND	C
TC	TELECOMMUNICATIONS OVERHEAD	C
NG	NATURAL GAS UNDERGROUND	C
WA	WATER MAIN PIPE UNDERGROUND	C
---	PUBLIC RIGHT OF WAY - BYWAY OPEN TO ALL TRAFFIC	
---	PUBLIC RIGHT OF WAY - FOOTPATH	
---	TWAO RED LINE / LIMIT OF DEVIATION BOUNDARY	
---	SITE COMPOUND	
---	CONSTRUCTION EXCLUSION ZONE	



FISHTEK CONSULTING

Fishtek Consulting
Unit 1A Webbers Way
Dartington, Tolnes
Devon, UK
TQ9 6JY

Tel: +44 (0)1803 866680
www.fishtek.co.uk

© Fishtek (2023)

TURF LOCK, SUFFOLK

Rock Ramp Site Plan

Environment Agency

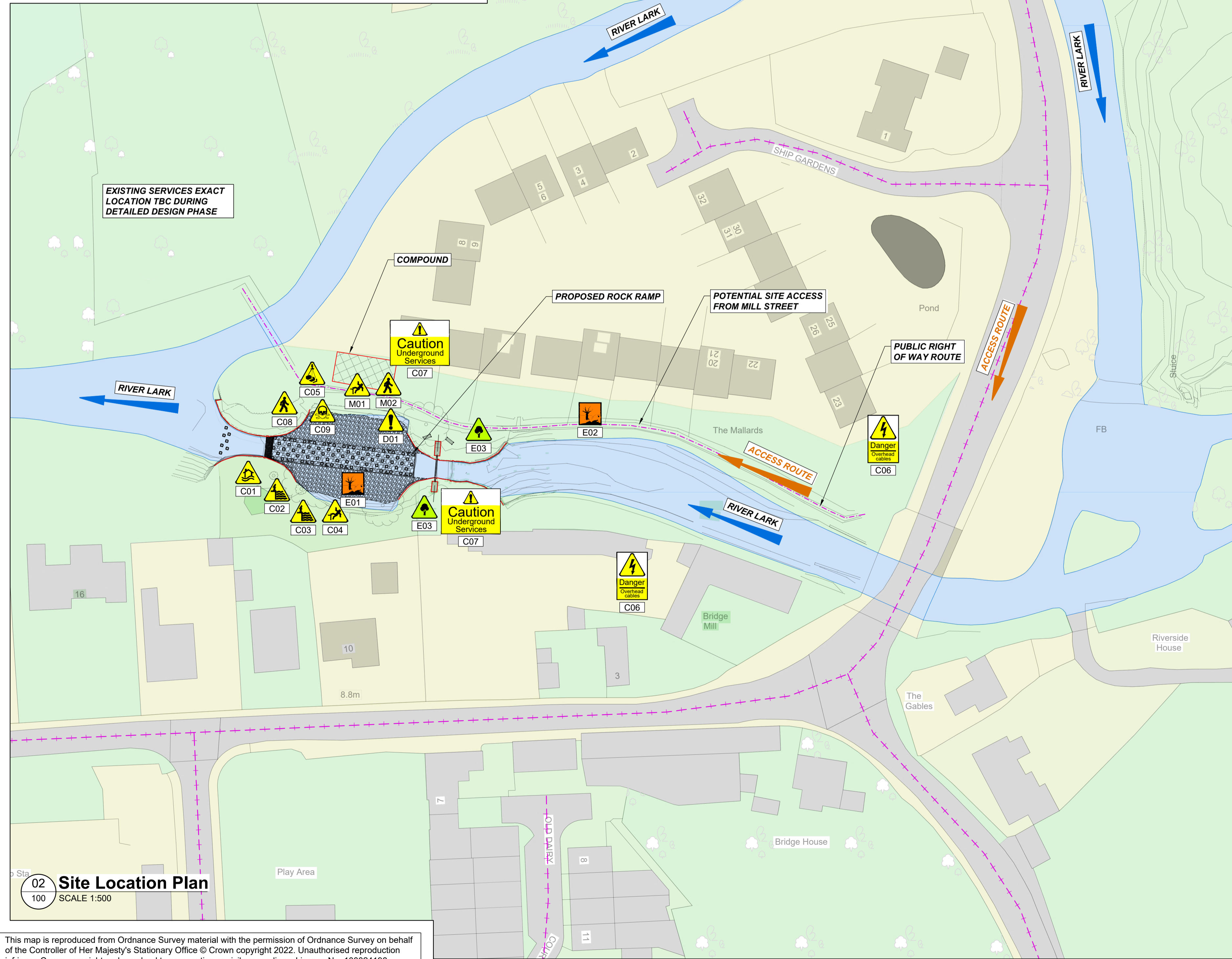
© copyright reserved

Parent Model
NOT FROM MODEL

Security Classification OFFICIAL	Scale AS SHOWN		
Author JSC	Checker MD	Reviewer PG	Approver PG
Suitability FOR REVIEW / COMMENT	Status S3	Revision P01	Information Contained 101 - 03259

A1 Sheet Size

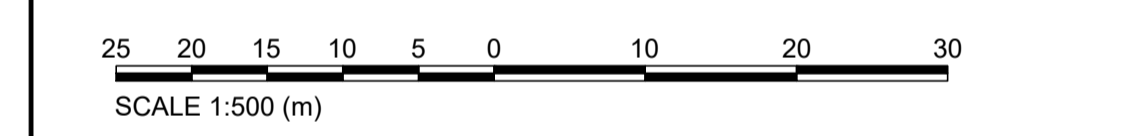
This map is reproduced from Ordnance Survey material with the permission of Ordnance Survey on behalf of the Controller of Her Majesty's Stationary Office © Crown copyright 2022. Unauthorised reproduction infringes Crown copyright and may lead to prosecution or civil proceedings. Licence No. 100024198



This map is reproduced from Ordnance Survey material with the permission of Ordnance Survey on behalf of the Controller of Her Majesty's Stationary Office © Crown copyright 2022. Unauthorised reproduction infringes Crown copyright and may lead to prosecution or civil proceedings. Licence No. 100024198

- GENERAL NOTES**
- ALL DIMENSIONS ARE IN MILLIMETRES UNLESS NOTED OTHERWISE.
 - ALL LEVELS ARE IN METRES RELATIVE TO ORDNANCE DATUM NEWLYN (mAOD) UNLESS NOTED OTHERWISE.
 - ALL COORDINATES ARE IN METRES RELATIVE TO ORDNANCE SURVEY NATIONAL GRID.
 - DO NOT SCALE FROM THIS DRAWING. ALL DIMENSIONS MUST BE CHECKED / VERIFIED ON SITE.
 - TO BE READ IN CONJUNCTION WITH APPROPRIATE ADVANCED ARBORICULTURE - TREE PROTECTION STATEMENT

- LEGEND**
- FD - FOUL DRAINAGE SEWER UNDERGROUND
 - HV - HV UNDERGROUND
 - HV - HV OVERHEAD
 - TC - TELECOMMUNICATIONS UNDERGROUND
 - TC - TELECOMMUNICATIONS OVERHEAD
 - NG - NATURAL GAS UNDERGROUND
 - WA - WATER MAIN PIPE UNDERGROUND
 - Public Right of Way - Byway Open to All Traffic
 - Public Right of Way - Footpath
 - Two Red Line / Limit of Deviation Boundary
 - Site Compound
 - Construction Exclusion Zone



SAFETY, HEALTH, ENVIRONMENTAL, AND WELFARE INFORMATION

IN ADDITION TO THE HAZARDS / RISKS NORMALLY ASSOCIATED WITH THE TYPES OF WORK DETAILED ON THIS DRAWING, NOTE THE FOLLOWING SIGNIFICANT RISKS.

CONSTRUCTION

- C01** DRA REF.: 0900 - 03259
MANAGING FLOW & STAGE LEVELS IN RIVER LARK.
-MONITOR RIVER LEVELS & EA FLOOD WARNINGS.
-OBSERVE EGRESS AND EVACUATION PLAN FROM COFFERDAM.
- C02** MANAGING SEEPAGE FLOWS
-MONITOR SEEPAGE AND CONDITION OF COFFERDAM.
-CHECK THAT PUMPING CAPACITY EXCEEDS SEEPAGE INFLOW.
- C03** WORKING NEAR WATER - FISH PASS INSTALLATION WORKS WITHIN RIVER AREA.
-CHECK APPROPRIATE SAFETY EQUIPMENT & ACCESS POINTS.
-ASSESS BANK STABILITY / CONDITIONS CONSIDERING ACCESS.
- C04** RISK OF FALLS FROM HEIGHT
- CHECK ADEQUATE PROVISION OF GUARD RAILS AND ACCESS POINTS.
- C05** ACCESS & LIFTING
-AGREE AN ACCESS THROUGH THE LAND WITH THE LAND OWNER.
-CHECK CRANE PAD HAS BEEN SIGNED-OFF PRIOR TO USE.
-STRICTLY OBSERVE LIFTING PLANS.
- C06** RISK OF SERVICES STRIKES - OVERHEAD HIGH VOLTAGE CABLES NEAR WORKING AREA AND ACCESS ROUTE CAN BE SEEN.
-CHECK FOR IDENTIFIED / UNIDENTIFIED SERVICES BY REVIEW OF PCI,CATSCAN&GPR SURVEY&MARK-UP PRIOR TO START OF WORKS.
RISK OF SERVICES STRIKES - UNDERGROUND CABLES IDENTIFIED ON UTILITIES SEARCH.
- C07** -CHECK FOR IDENTIFIED / UNIDENTIFIED SERVICES BY REVIEW OF PCI,CATSCAN&GPR SURVEY&MARK-UP PRIOR TO START OF WORKS.
- C08** INTERFACE WITH PUBLIC - PUBLIC FOOTPATH - TEMPORARY CLOSURE WILL BE REQUIRED.
- ERECT SECURE HERAS FENCING WITH LOCKABLE GATES AROUND THE SITE COMPOUND AND BANKSIDE WORKING AREA.
- C09** INSTALLATION
-USE OF TOXIC OR HAZARDOUS CHEMICALS - CEMENTITIOUS PRODUCTS AND OR GROUTS COULD BE HARMFUL TO OPERATIVES & ENVIRONMENT.

ENVIRONMENT

- E01** POLLUTION OF WATERCOURSE
-OBSERVE 'GUIDANCE FOR POLLUTION PREVENTION 2018'
-OBSERVE SITE WASTE MANAGEMENT, SITE ENVIRONMENTAL EMERGENCY AND INCIDENT RESPONSE PLANS.
- E02** ECOLOGY SURVEY REQUIRED OF PROPOSED ACCESS ROUTE BEFORE WORKS COMMENCE, TO CONFIRM THE PRESENCE OF INVASIVE SPECIES, GROUND NESTING BIRDS, OR ANY OTHER ECOLOGICAL RISK AND APPROPRIATE MITIGATION.
- E03** TREE ROOT PROTECTION ZONES WITHIN WORKING AREA AND ALONG THE ACCESS ROUTE.

MAINTENANCE / CLEANING

- M01** RISK OF FALLS FROM HEIGHT
-ACCESS FOR CLEANING DEBRIS FROM THE BANKS.
- M02** UNAUTHORISED ACCESS BY THE PUBLIC
-LOCKABLE ACCESS GATE TO PLATFORM.

DECOMMISSIONING / DEMOLITION

- D01** - NATURALIZED FISH PASS CHANNEL CONSISTS OF HEAVY ROCKS - BOULDERS, EMBEDDED IN CONCRETE FOOTINGS.

IT IS ASSUMED THAT ALL WORKS WILL BE CARRIED OUT BY A COMPETENT CONTRACTOR, WORKING, WHERE APPROPRIATE, TO AN APPROVED METHOD STATEMENT

P01	First Issue	2023.07.19	JSC	MD	PG	PG
Rev.	Description	Date	Author	Checker	Reviewer	Approver

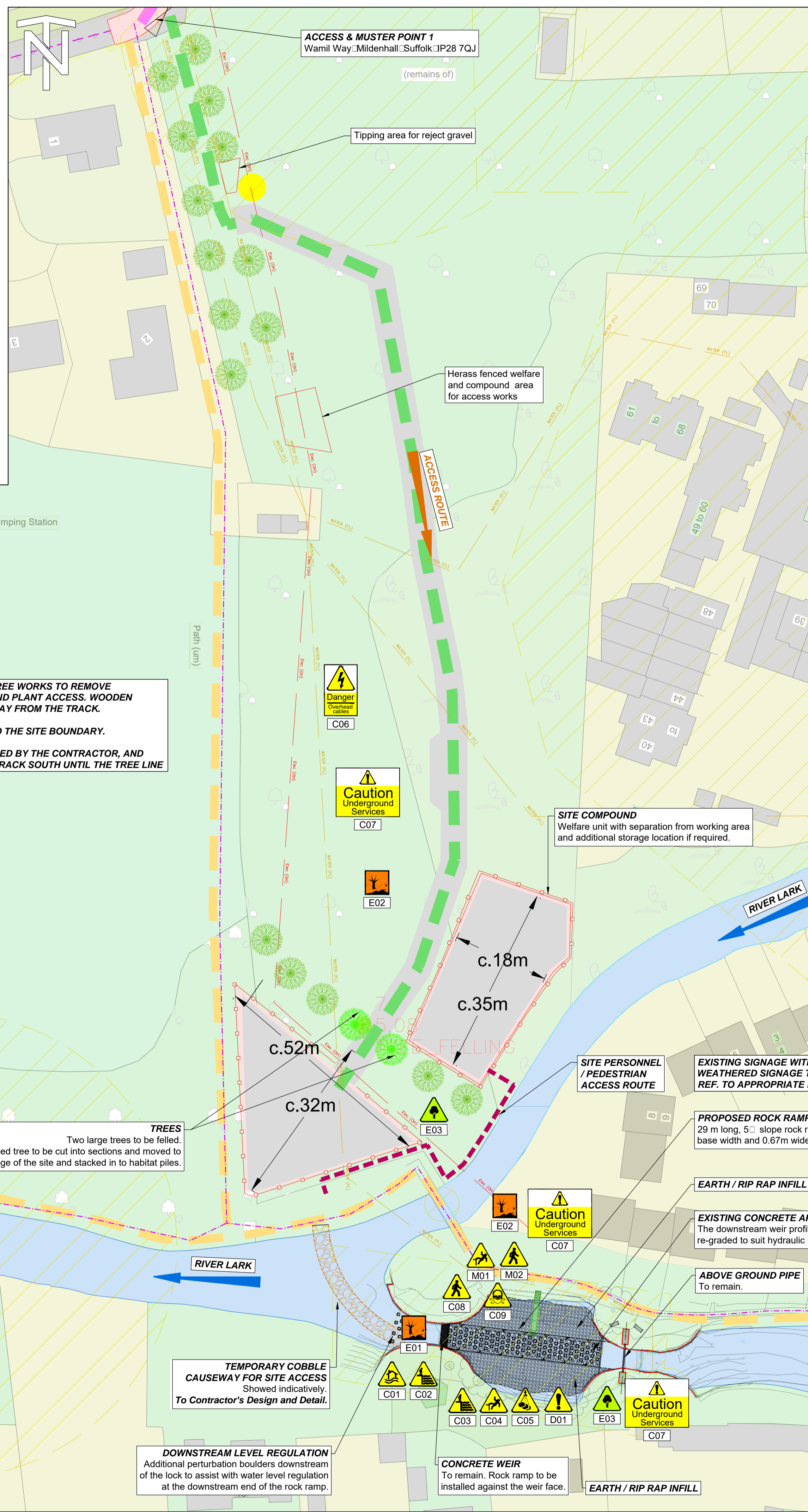
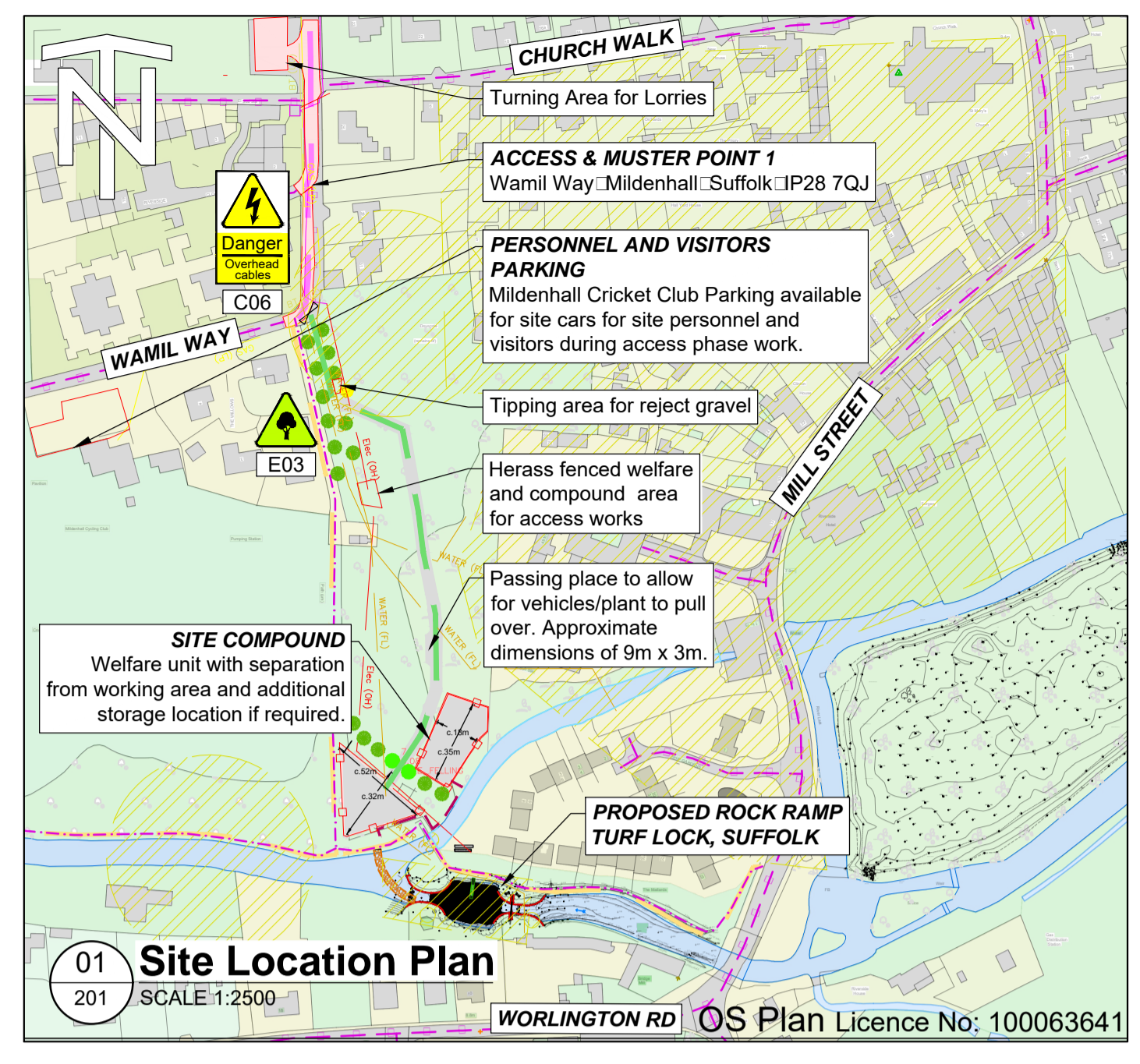
Supplier
FISHTEK CONSULTING
Fishtek Consulting
Unit 1A Webbers Way
Dartington, Tolnes
Devon, UK
TQ9 6JY
Tel: +44 (0)1803 866680
www.fishtek.co.uk
© Fishtek (2023)

Project Title
TURF LOCK, SUFFOLK

Drawing Title
**Rock Ramp
Site Location Plan & Hazard Map**



Security Classification OFFICIAL	Scale AS SHOWN
Author JSC	Checker MD
Reviewer PG	Approver PG
Suitability FOR REVIEW / COMMENT	Status S3
Information Contained 100 - 03259	Revision P01



SAFETY, HEALTH, ENVIRONMENTAL, AND WELFARE INFORMATION

IN ADDITION TO THE HAZARDS / RISKS NORMALLY ASSOCIATED WITH THE TYPES OF WORK DETAILED ON THIS DRAWING, NOTE THE FOLLOWING SIGNIFICANT RISKS:

CONSTRUCTION	
C01	MANAGING FLOW & STAGE LEVELS IN RIVER LARK. - MONITOR RIVER LEVELS & EA FLOOD WARNINGS. - OBSERVE EGRESS AND EVACUATION PLAN FROM COFFERDAM.
C02	MANAGING SEEPAGE FLOWS. - MONITOR SEEPAGE AND CONDITION OF COFFERDAM. - CHECK THAT PUMPING CAPACITY EXCEEDS SEEPAGE INFLOW.
C03	WORKING NEAR WATER - FISH PASS INSTALLATION WORKS WITHIN RIVER AREA. - CHECK APPROPRIATE SAFETY EQUIPMENT & ACCESS POINTS. - ASSESS BANK STABILITY / CONDITIONS CONSIDERING ACCESS.
C04	RISK OF FALLS FROM HEIGHT. - CHECK ADEQUATE PROVISION OF GUARD RAILS AND ACCESS POINTS.
C05	ACCESS & LIFTING. - AGREE AN ACCESS THROUGH THE LAND WITH THE LAND OWNER. - CHECK CRANE PAD HAS BEEN SIGNED-OFF PRIOR TO USE. - STRICTLY OBSERVE LIFTING PLANS.
C06	RISK OF SERVICES STRIKES - OVERHEAD HIGH VOLTAGE CABLES NEAR WORKING AREA AND ACCESS ROUTE CAN BE SEEN. - CHECK FOR IDENTIFIED / UNIDENTIFIED SERVICES BY REVIEW OF PCI, CATSCAN & GPR SURVEY & MARK-UP PRIOR TO START OF WORKS.
C07	RISK OF SERVICES STRIKES - UNDERGROUND CABLES IDENTIFIED ON UTILITIES SEARCH. - CHECK FOR IDENTIFIED / UNIDENTIFIED SERVICES BY REVIEW OF PCI, CATSCAN & GPR SURVEY & MARK-UP PRIOR TO START OF WORKS.
C08	INTERFACE WITH PUBLIC - PUBLIC FOOTPATH - TEMPORARY CLOSURE WILL BE REQUIRED. - ERECT SECURE HERAS FENCING WITH LOCKABLE GATES AROUND THE SITE COMPOUND AND BANKSIDE WORKING AREA.
C09	INSTALLATION. - USE OF TOXIC OR HAZARDOUS CHEMICALS - CEMENTITIOUS PRODUCTS AND OR GROUTS COULD BE HARMFUL TO OPERATIVES & ENVIRONMENT.
ENVIRONMENT	
E01	POLLUTION OF WATERCOURSE. - OBSERVE 'GUIDANCE FOR POLLUTION PREVENTION 2018'. - OBSERVE SITE WASTE MANAGEMENT, SITE ENVIRONMENTAL EMERGENCY AND INCIDENT RESPONSE PLANS.
E02	ECOLOGY SURVEY REQUIRED OF PROPOSED ACCESS ROUTE BEFORE WORKS COMMENCE. TO CONFIRM THE PRESENCE OF INVASIVE SPECIES, GROUND NESTING BIRDS, OR ANY OTHER ECOLOGICAL RISK AND APPROPRIATE MITIGATION.
E03	TREE ROOT PROTECTION ZONES WITHIN WORKING AREA AND ALONG THE ACCESS ROUTE.
MAINTENANCE / CLEANING	
M01	RISK OF FALLS FROM HEIGHT. - ACCESS FOR CLEANING DEBRIS FROM THE BANKS.
M02	UNAUTHORISED ACCESS BY THE PUBLIC. - LOCKABLE ACCESS GATE TO PLATFORM.
DECOMMISSIONING / DEMOLITION	
D01	- NATURALIZED FISH PASS CHANNEL CONSISTS OF HEAVY ROCKS - BOULDERS, EMBEDDED IN CONCRETE FOOTINGS.

IT IS ASSUMED THAT ALL WORKS WILL BE CARRIED OUT BY A COMPETENT CONTRACTOR, WORKING, WHERE APPROPRIATE, TO AN APPROVED METHOD STATEMENT

- GENERAL NOTES**
- ALL DIMENSIONS ARE IN MILLIMETRES UNLESS NOTED OTHERWISE.
 - ALL LEVELS ARE IN METRES RELATIVE TO ORDNANCE DATUM NEWLYN (mAD) UNLESS NOTED OTHERWISE.
 - ALL COORDINATES ARE IN METRES RELATIVE TO ORDNANCE SURVEY NATIONAL GRID.
 - DO NOT SCALE FROM THIS DRAWING. ALL DIMENSIONS MUST BE CHECKED / VERIFIED ON SITE.
 - TO BE READ IN CONJUNCTION WITH APPROPRIATE ADVANCED ARBORICULTURE - TREE PROTECTION STATEMENT



LEGEND

FD	FOUL DRAINAGE SEWER UNDERGROUND	C
HV	HV UNDERGROUND	C
HV	HV OVERHEAD	C
TC	TELECOMMUNICATIONS UNDERGROUND	C
TC	TELECOMMUNICATIONS OVERHEAD	C
NG	NATURAL GAS UNDERGROUND	C
WA	WATER MAIN PIPE UNDERGROUND	C
	PUBLIC RIGHT OF WAY - BYWAY OPEN TO ALL TRAFFIC	
	PUBLIC RIGHT OF WAY - FOOTPATH	
	SITE ACCESS ROUTE TBC BY CONTRACTOR	
	SITE COMPOUND	
	CONSTRUCTION EXCLUSION ZONE	

SCALE 1:500 (m)

Rev.	Description	Date	Author	Checker	Reviewer	Approver
P01	Detailed Design - First Issue	23.05.2024	JSC	ML	PG	PG

Supplier: **FISHTEK CONSULTING**
Fishtek Consulting
Unit 1A Webbers Way
Dartington, Tolnes
Devon, UK
TQ9 6JY
Tel: 044 (0)1803 86...
www.fishtek.co.uk
© Fishtek (2024)

Project Title: **TURF LOCK, SUFFOLK**

Drawing Title: **Rock Ramp Site Plan**



Parent Model: NOT FROM MODEL

Author	Checker	Reviewer	Approver
JSC	ML	PG	PG

Information Contained: 201 - 3540222

This map is reproduced from Ordnance Survey material with the permission of Ordnance Survey on behalf of the Controller of Her Majesty's Stationary Office. Crown copyright 2022. Unauthorised reproduction infringes Crown copyright and may lead to prosecution or civil proceedings. Licence No. 100024198

SAFETY HEALTH AND ENVIRONMENT INFORMATION

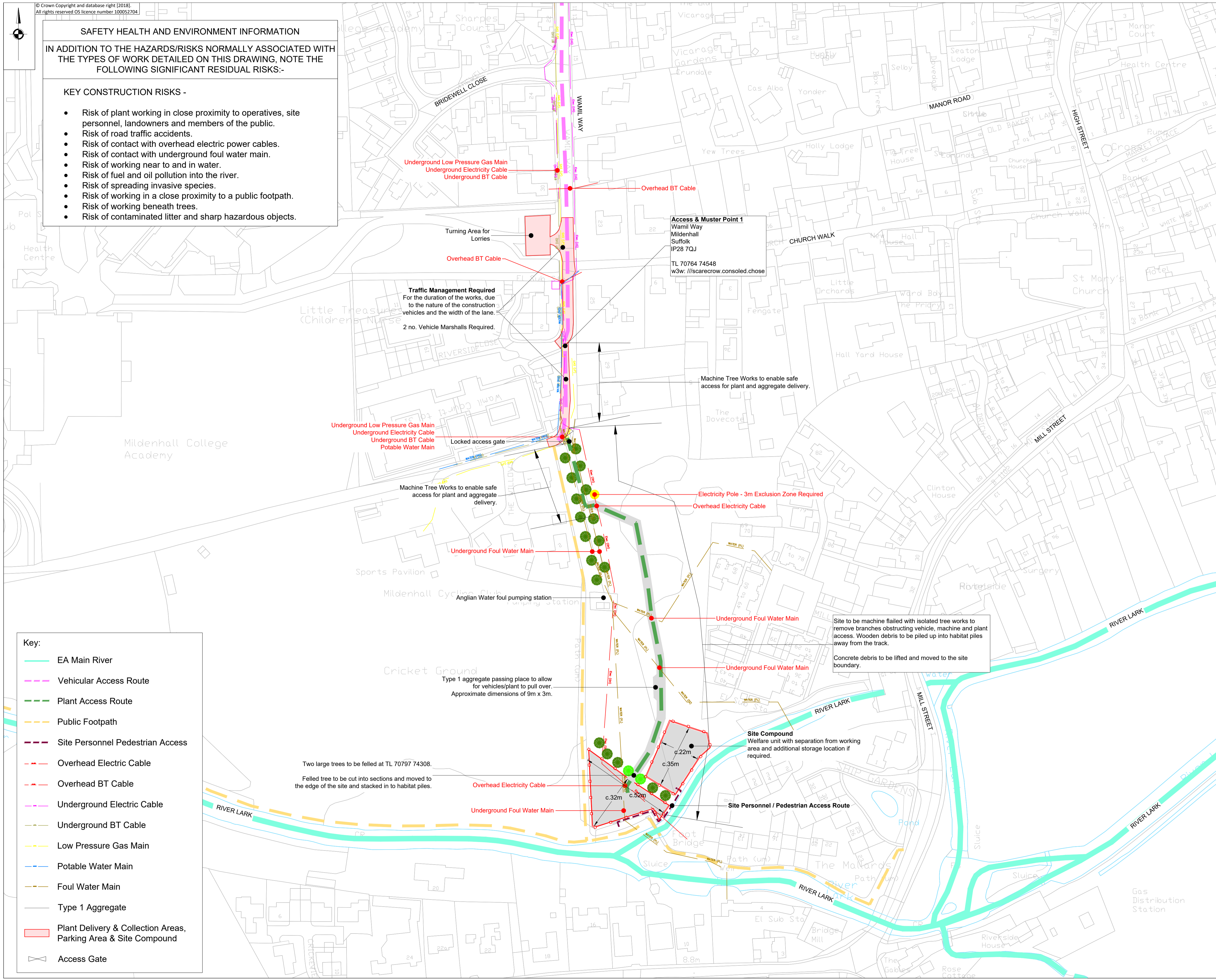
IN ADDITION TO THE HAZARDS/RISKS NORMALLY ASSOCIATED WITH THE TYPES OF WORK DETAILED ON THIS DRAWING, NOTE THE FOLLOWING SIGNIFICANT RESIDUAL RISKS:-

KEY CONSTRUCTION RISKS -

- Risk of plant working in close proximity to operatives, site personnel, landowners and members of the public.
- Risk of road traffic accidents.
- Risk of contact with overhead electric power cables.
- Risk of contact with underground foul water main.
- Risk of working near to and in water.
- Risk of fuel and oil pollution into the river.
- Risk of spreading invasive species.
- Risk of working in a close proximity to a public footpath.
- Risk of working beneath trees.
- Risk of contaminated litter and sharp hazardous objects.

Notes:

1. No dimensions to be scaled from this drawing.
2. Drawing to be read in conjunction with Pre-Works Information, Risk Assessment and Method Statement
3. Permit to dig to be completed before breaking ground.
4. Overhead cable permit and (GS6) required before passing beneath any overhead cables.
5. 2 no. heavy duty timber machine mats to be placed over each foul main crossing for protection.
6. Type1 track and compound areas to be left if possible once construction is complete
7. Temporary matting is an alternative to Type 1
8. Check, clean and dry procedure to be followed.
9. Any questions regarding the logistics and design of this work to be to Paul George on 07788 914392



Key:

- EA Main River
- Vehicular Access Route
- Plant Access Route
- Public Footpath
- Site Personnel Pedestrian Access
- Overhead Electric Cable
- Overhead BT Cable
- Underground Electric Cable
- Underground BT Cable
- Low Pressure Gas Main
- Potable Water Main
- Foul Water Main
- Type 1 Aggregate
- Plant Delivery & Collection Areas, Parking Area & Site Compound
- Access Gate

FOR CONSULTATION

Rev	By	Chkd	Apprvd	Date	Description

Project: **TURFLOCK MILDENHALL FISH PASS**

SITE LOCATION AND ACCESS PLAN

Drawn by: OWEN PHILLIPS Date: 06/02/2024
Checked by: PAUL GEORGE Date: 07/02/2024
Approved by: PAUL GEORGE Date: 07/02/2024

Drawing No: **TURFL/2024/200/001** Revision: **0**