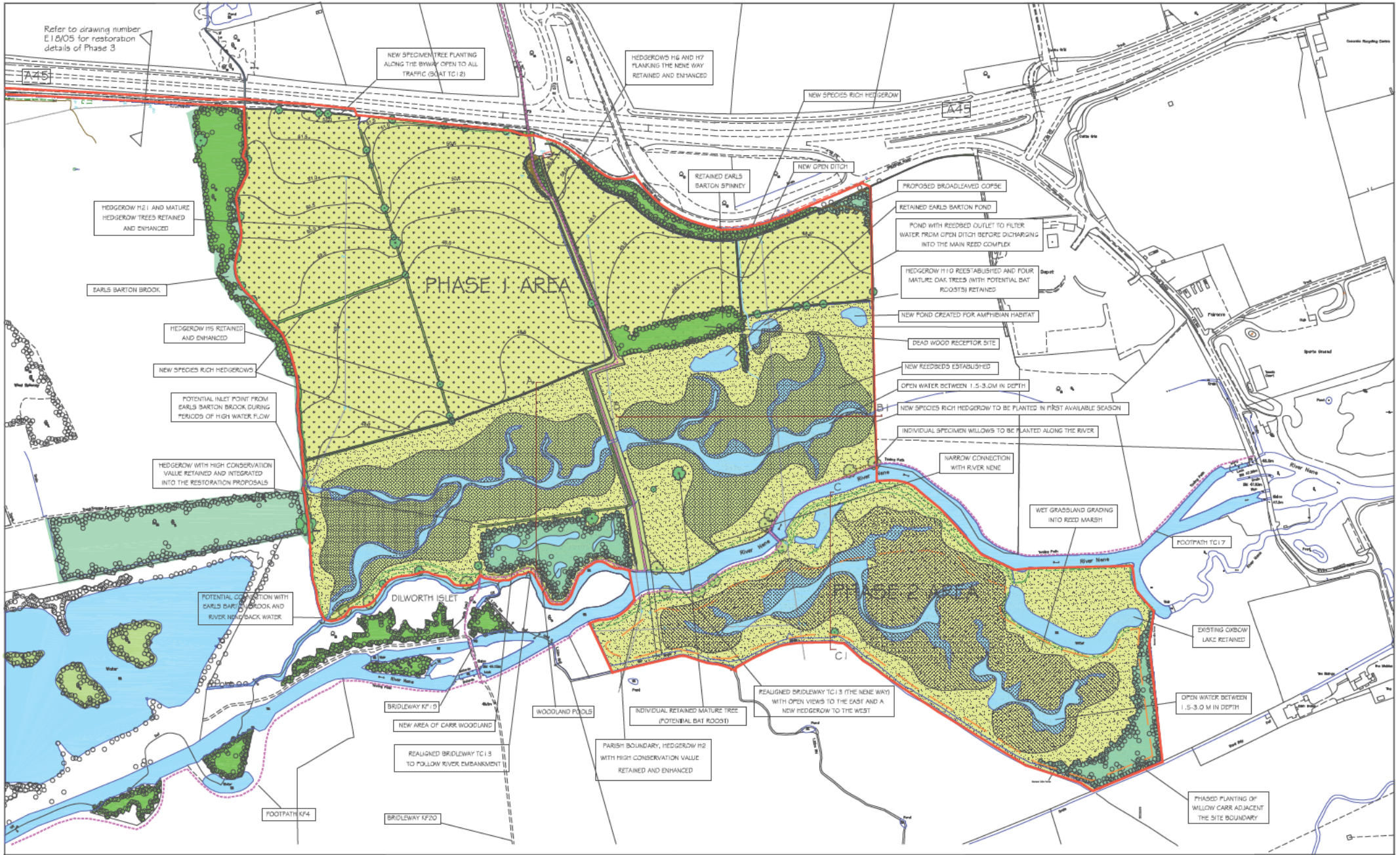


**APPENDIX K**

**DRAWING REFERENCE E18 / 04 ENTITLED 'RESTORATION PROPOSALS PHASES 1  
AND 2'**



Refer to drawing number E18/05 for restoration details of Phase 3

NEW SPECIMEN TREE PLANTING ALONG THE BYWAY OPEN TO ALL TRAFFIC (BOAT TC12)

HEDGEROWS H16 AND H17 FLANKING THE NENE WAY RETAINED AND ENHANCED

NEW SPECIES RICH HEDGEROW

HEDGEROW H21 AND MATURE HEDGEROW TREES RETAINED AND ENHANCED

RETAINED EARLS BARTON SPINNEY

PROPOSED BROADLEAVED COPSE

EARLS BARTON BROOK

RETAINED EARLS BARTON POND

HEDGEROW H15 RETAINED AND ENHANCED

POND WITH REEDBED OUTLET TO FILTER WATER FROM OPEN DITCH BEFORE DISCHARGING INTO THE MAIN REED COMPLEX

NEW SPECIES RICH HEDGEROWS

HEDGEROW H110 REESTABLISHED AND FOUR MATURE OAK TREES (WITH POTENTIAL BAT ROOSTS) RETAINED

POTENTIAL INLET POINT FROM EARLS BARTON BROOK DURING PERIODS OF HIGH WATER FLOW

NEW POND CREATED FOR AMPHIBIAN HABITAT

HEDGEROW WITH HIGH CONSERVATION VALUE RETAINED AND INTEGRATED INTO THE RESTORATION PROPOSALS

DEAD WOOD RECEPTOR SITE

NEW REEDBEDS ESTABLISHED

OPEN WATER BETWEEN 1.5-3.0M IN DEPTH

NEW SPECIES RICH HEDGEROW TO BE PLANTED IN FIRST AVAILABLE SEASON

INDIVIDUAL SPECIMEN WILLOWS TO BE PLANTED ALONG THE RIVER

NARROW CONNECTION WITH RIVER NENE

WET GRASSLAND GRADING INTO REED MARSH

POTENTIAL CONNECTION WITH EARLS BARTON BROOK AND RIVER NENE BACK WATER

FOOTPATH TC17

BRIDLEWAY KP15

WOODLAND POOLS

INDIVIDUAL RETAINED MATURE TREE (POTENTIAL BAT ROOST)

REALIGNED BRIDLEWAY TC13 (THE NENE WAY) WITH OPEN VIEWS TO THE EAST AND A NEW HEDGEROW TO THE WEST

EXISTING OSWICK LAKE RETAINED

FOOTPATH KP4

BRIDLEWAY KP20

REALIGNED BRIDLEWAY TC13 TO FOLLOW RIVER EMBANKMENT

PARISH BOUNDARY, HEDGEROW H12 WITH HIGH CONSERVATION VALUE RETAINED AND ENHANCED

PHASED PLANTING OF WILLOW CARR ADJACENT TO THE SITE BOUNDARY

LEGEND



Note  
This plan is based upon the Ordnance Survey's 1:25,000 map with the permission of the Controller of Her Majesty's Stationery Office, Crown Copyright Reserved. Licence No. 100039780



Location	Earls Barton Spinney Quarry		
Title	Restoration Proposals Phases 1 and 2		
Drawn	E18/04	Scale	1:2,500
Date	09/07		