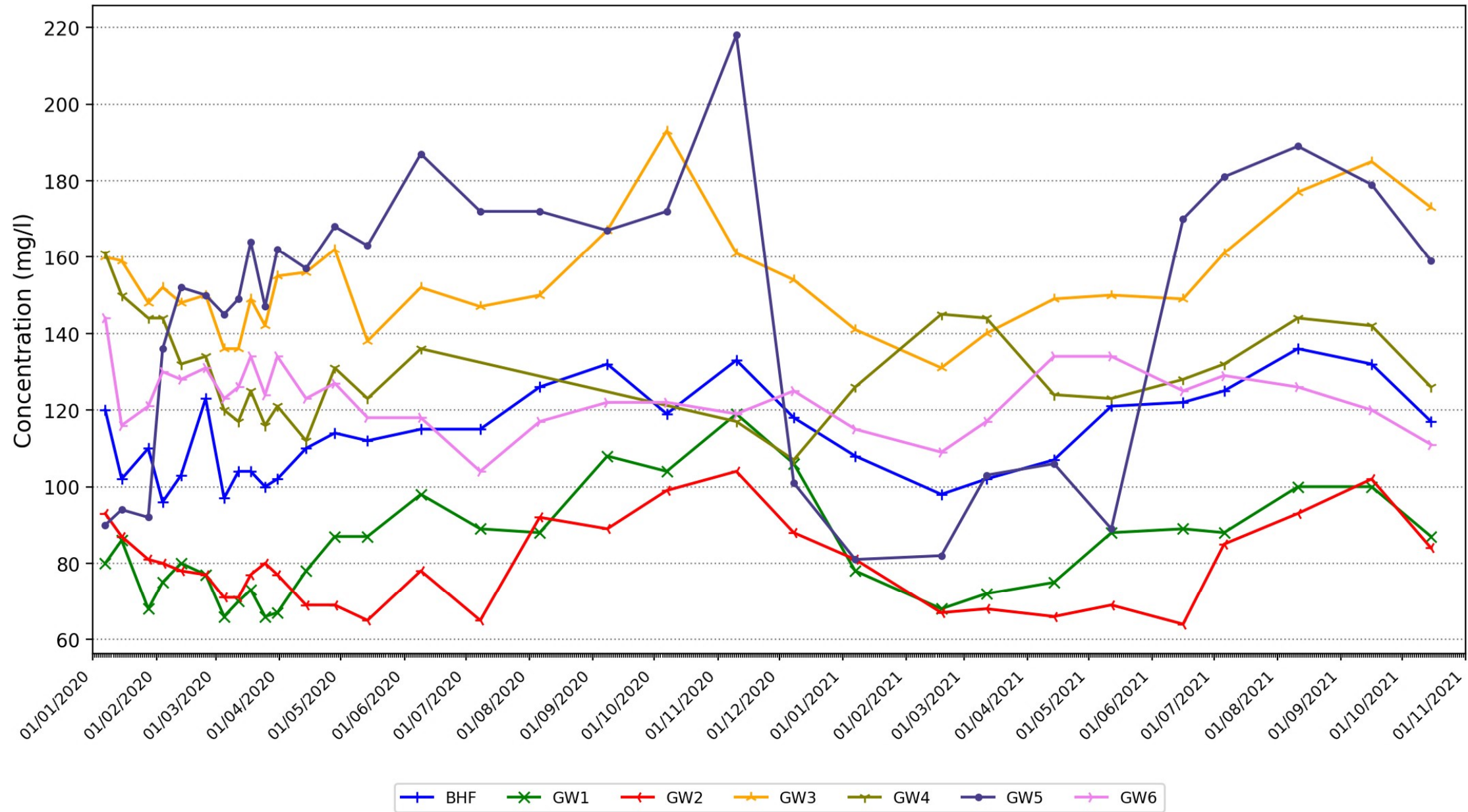


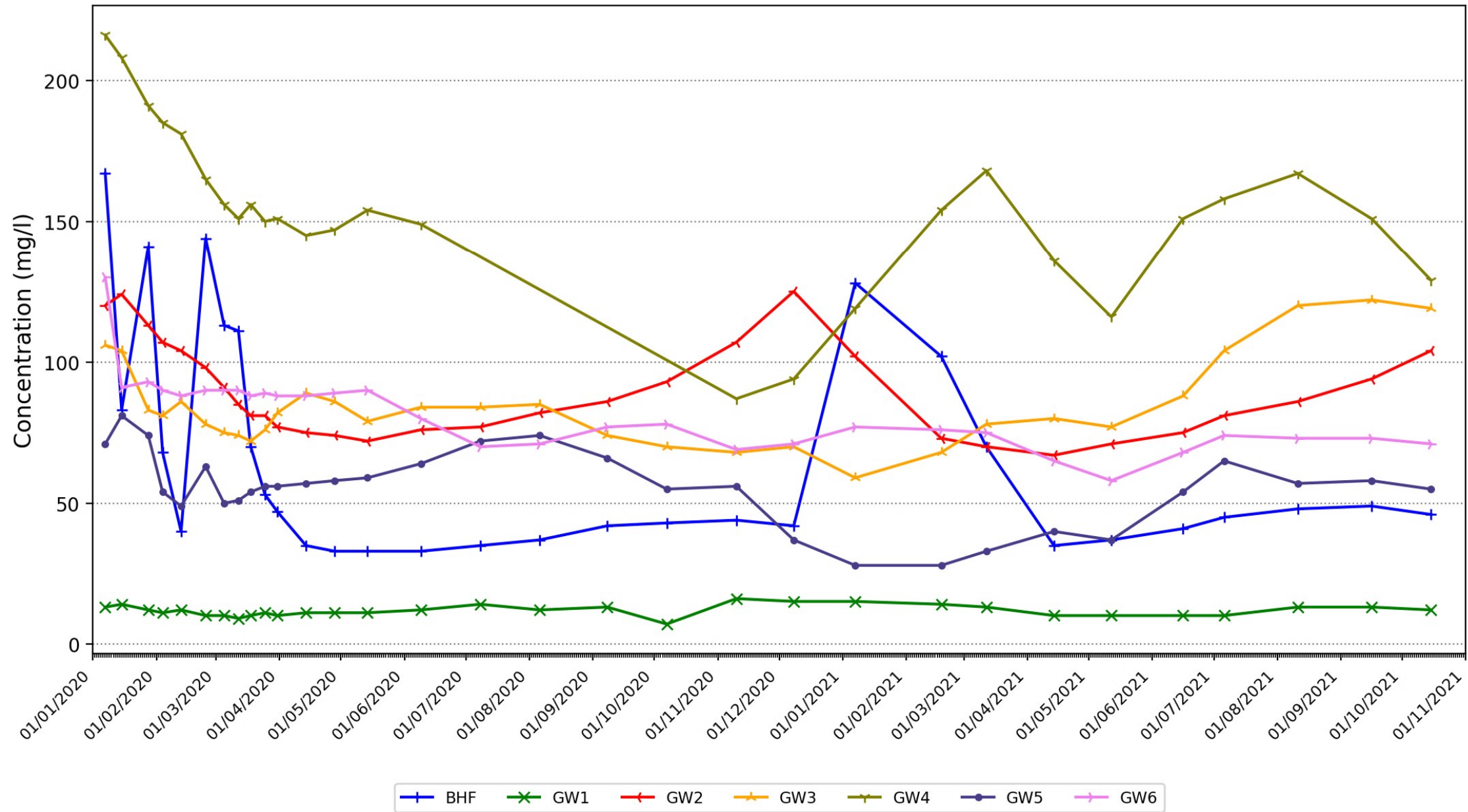
APPENDIX J

**GRAPHS OF THE GROUNDWATER QUALITY AND GROUNDWATER LEVELS AT THE
SITE**

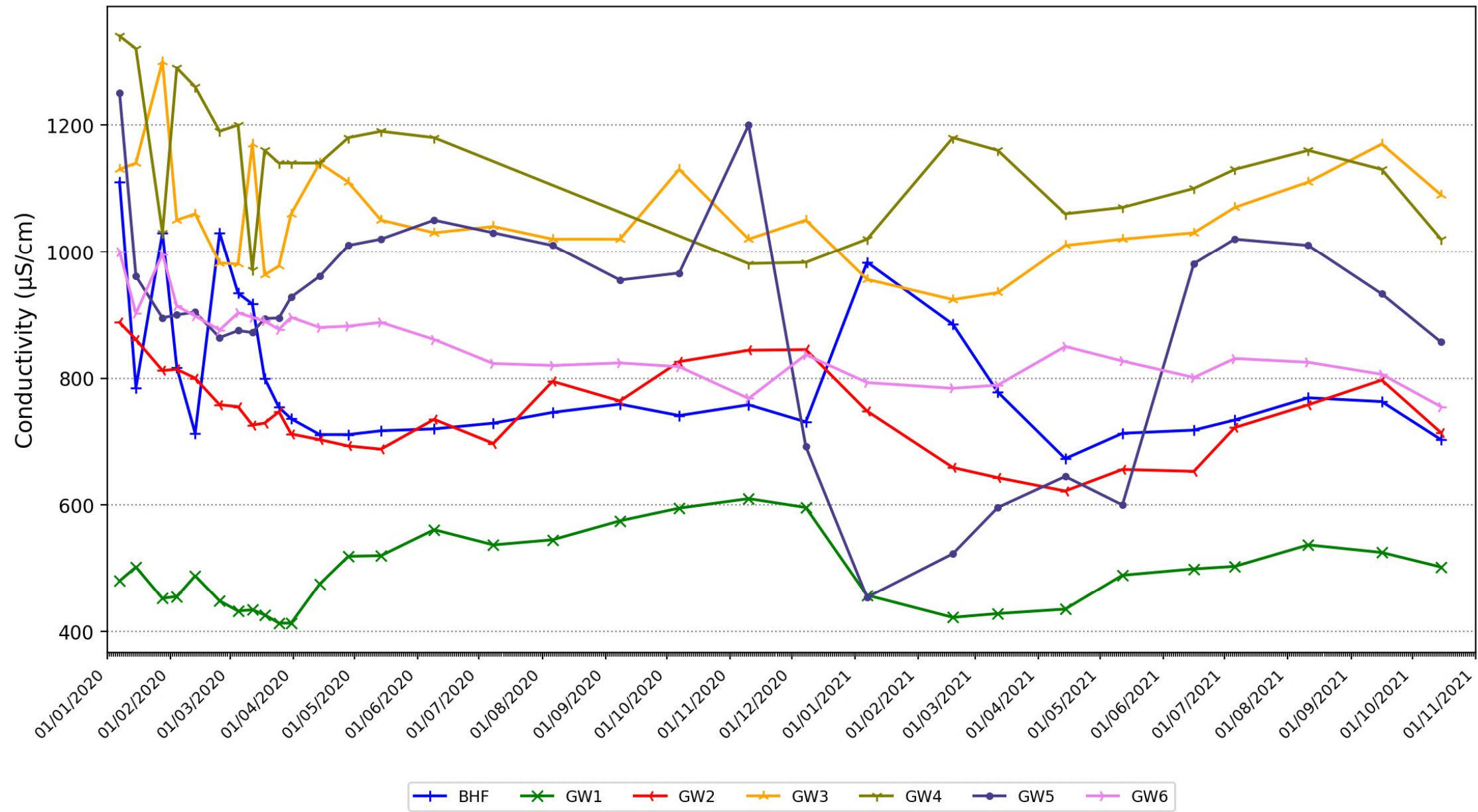
Graph showing the variation in calcium at monitoring locations in the vicinity of Earls Barton Quarry



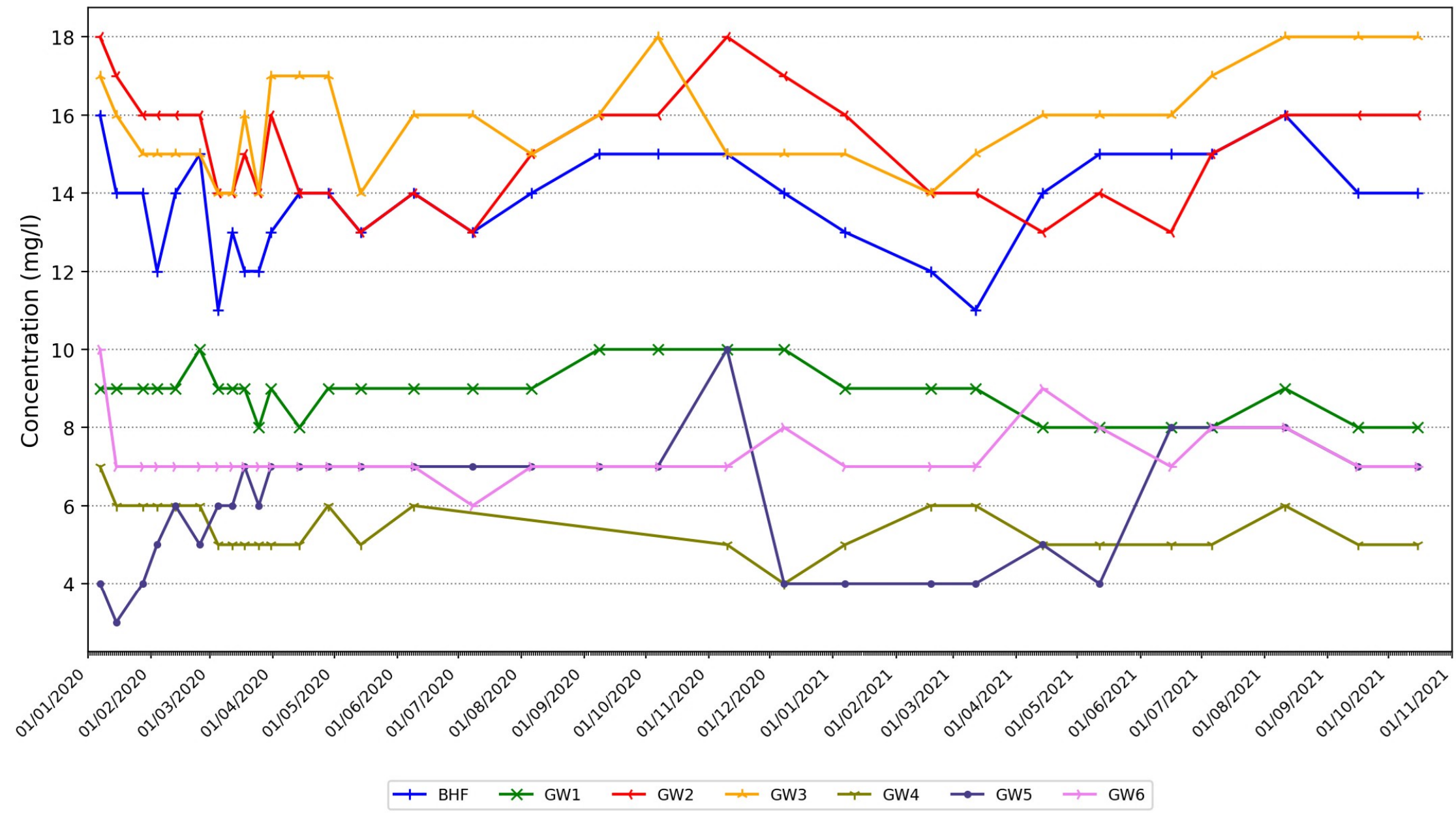
Graph showing the variation in chloride at monitoring locations in the vicinity of Earls Barton Quarry



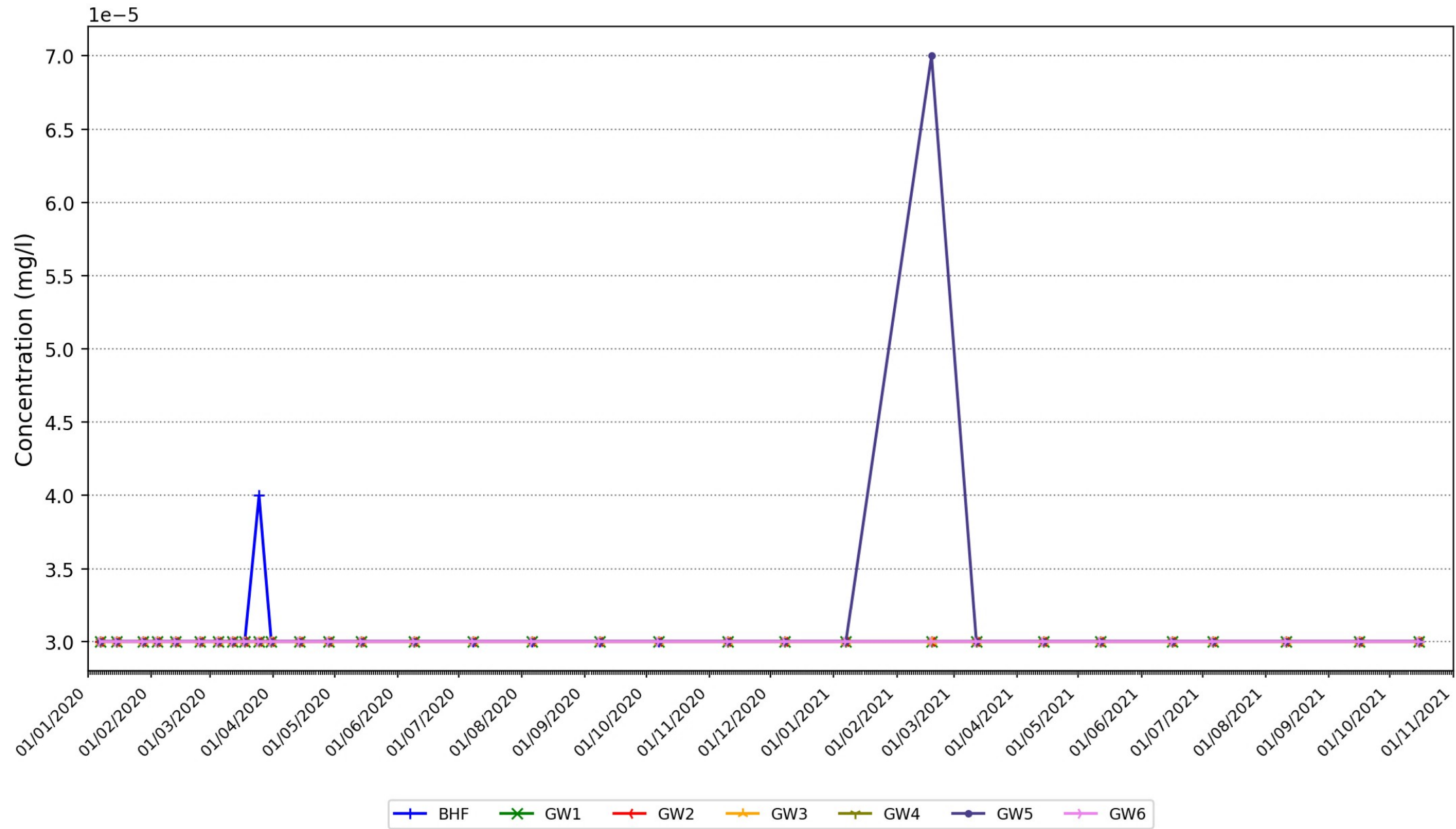
Graph showing the variation in electrical conductivity at monitoring locations in the vicinity of Earls Barton Quarry



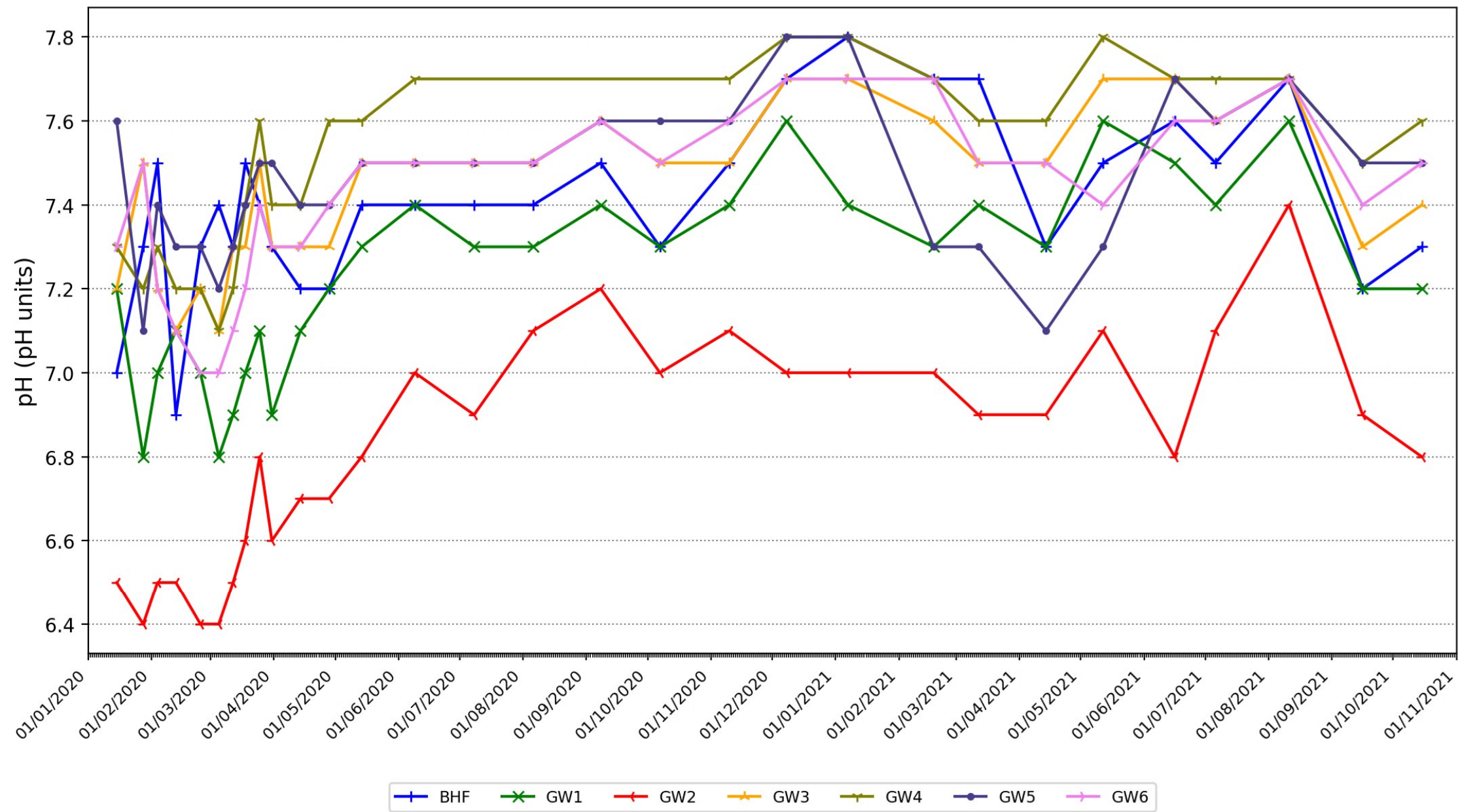
Graph showing the variation in magnesium at monitoring locations in the vicinity of Earls Barton Quarry



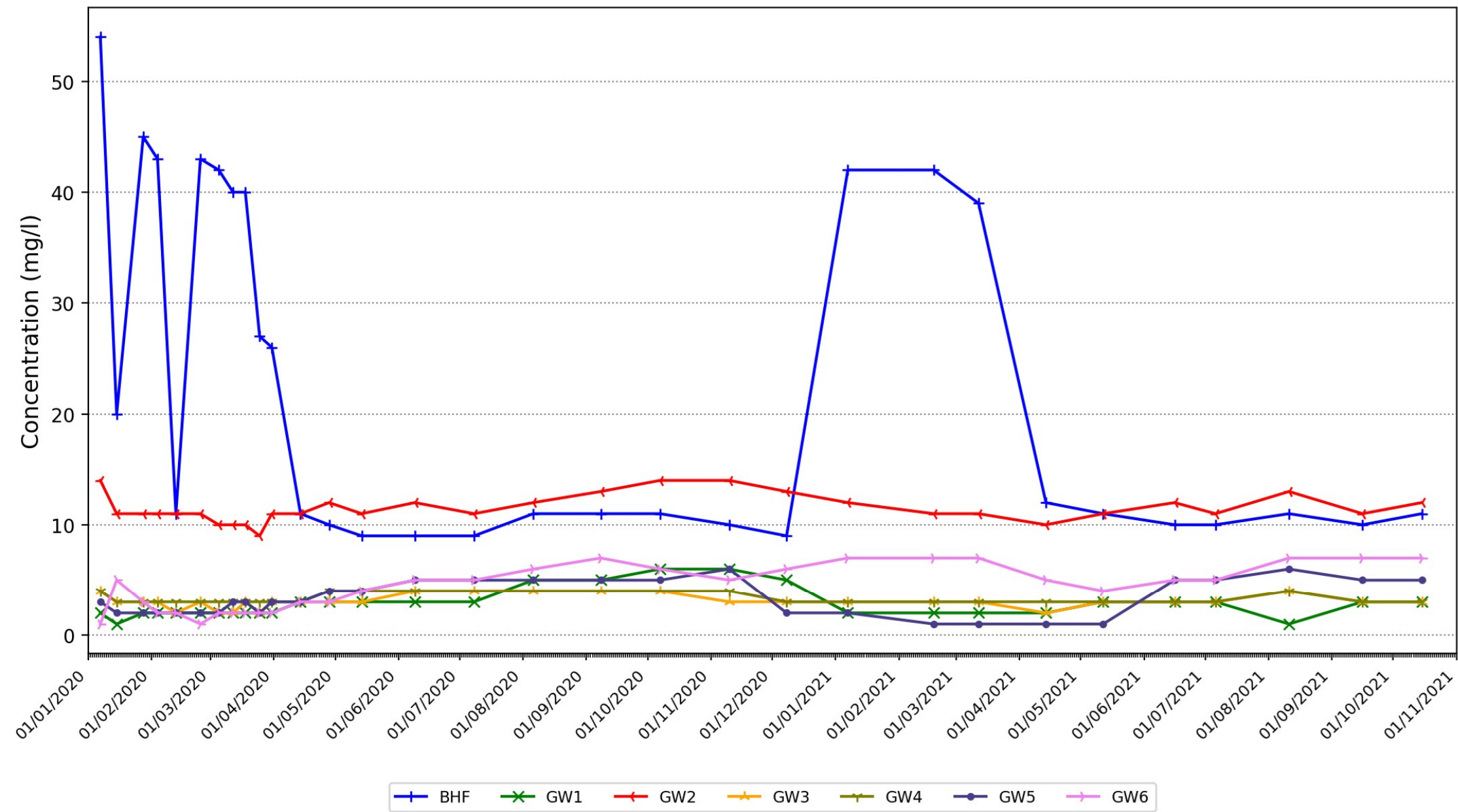
Graph showing the variation in mercury at monitoring locations in the vicinity of Earls Barton Quarry



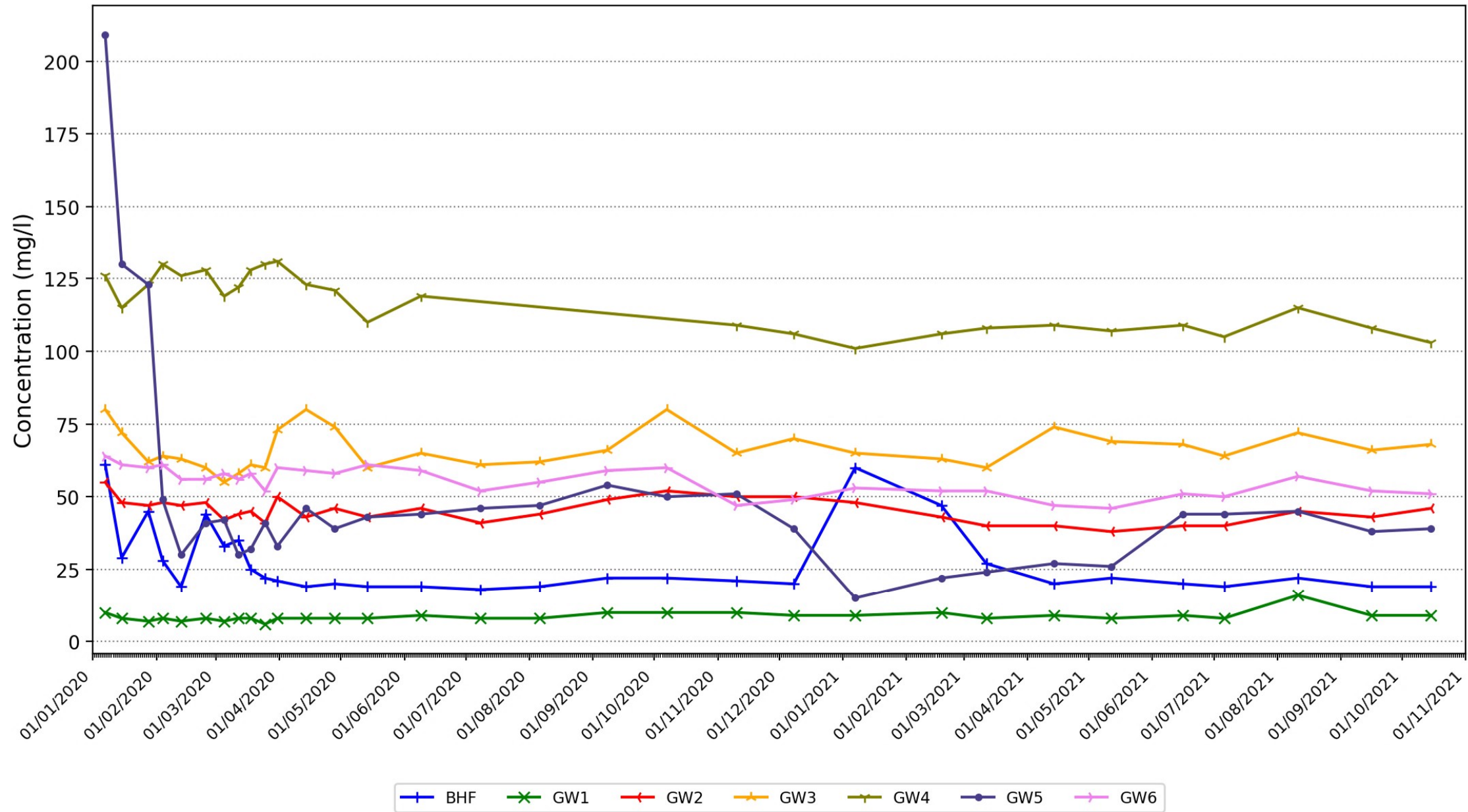
Graph showing the variation in pH (pH units) at monitoring locations in the vicinity of Earls Barton Quarry



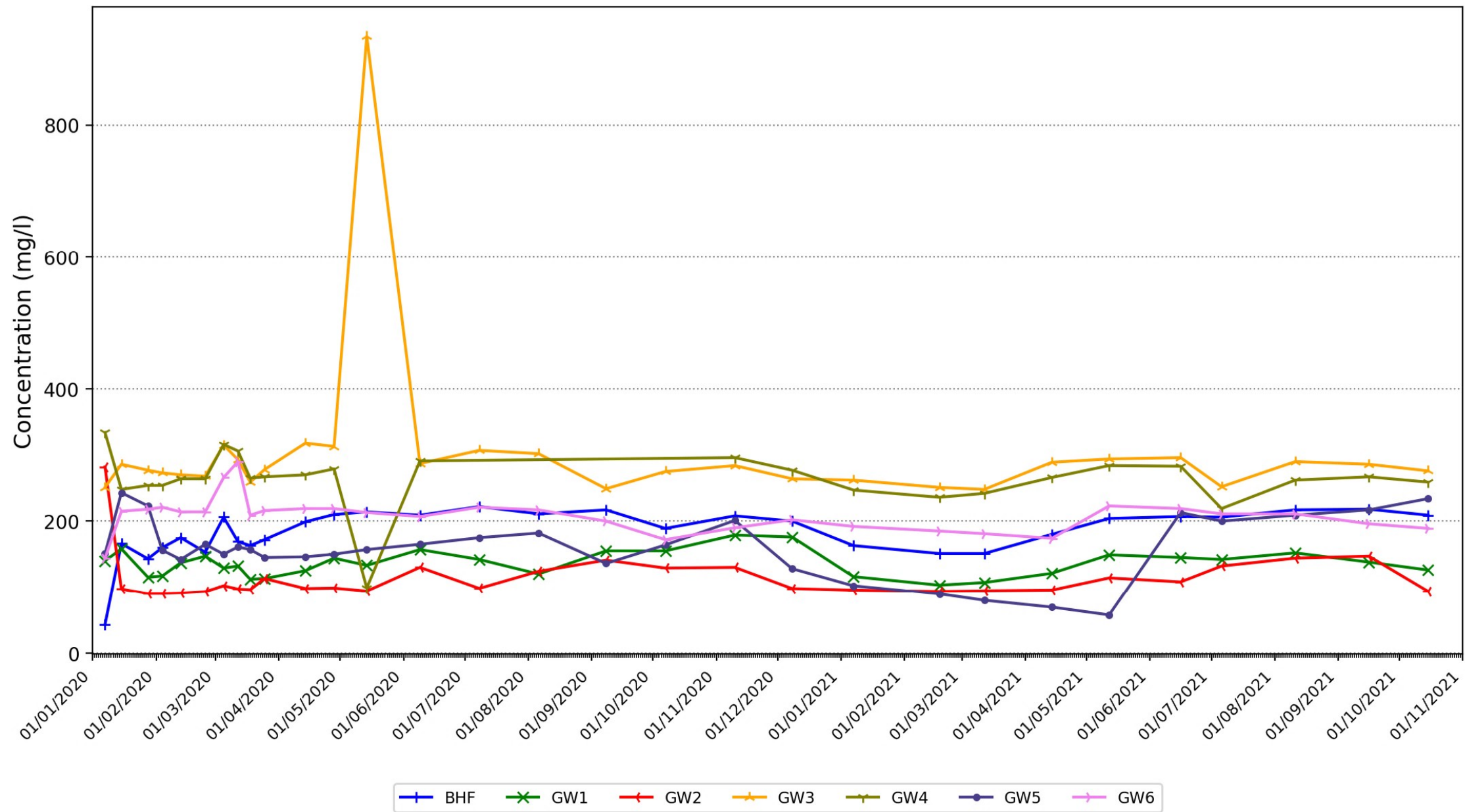
Graph showing the variation in potassium at monitoring locations in the vicinity of Earls Barton Quarry



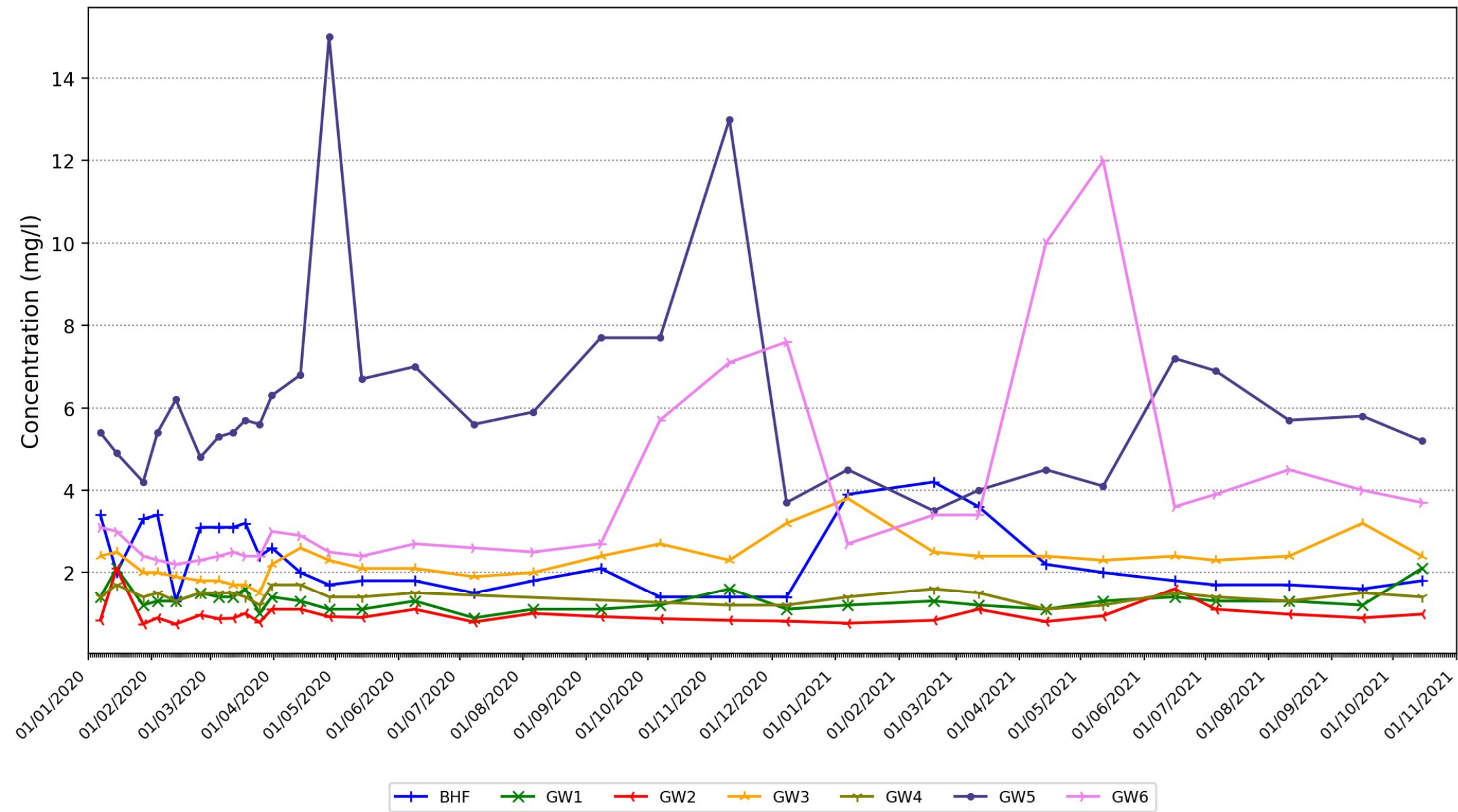
Graph showing the variation in sodium at monitoring locations in the vicinity of Earls Barton Quarry



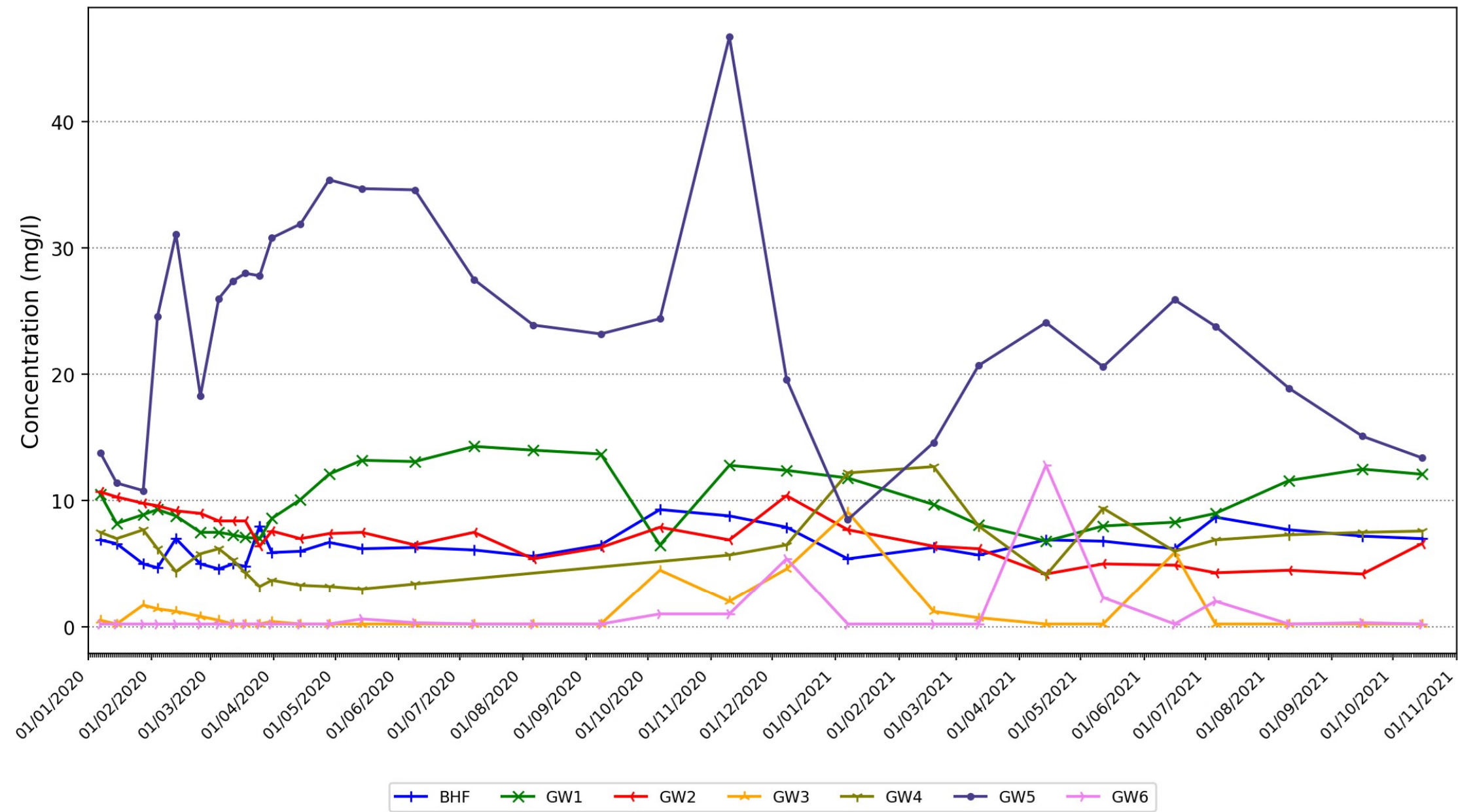
Graph showing the variation in total alkalinity at monitoring locations in the vicinity of Earls Barton Quarry



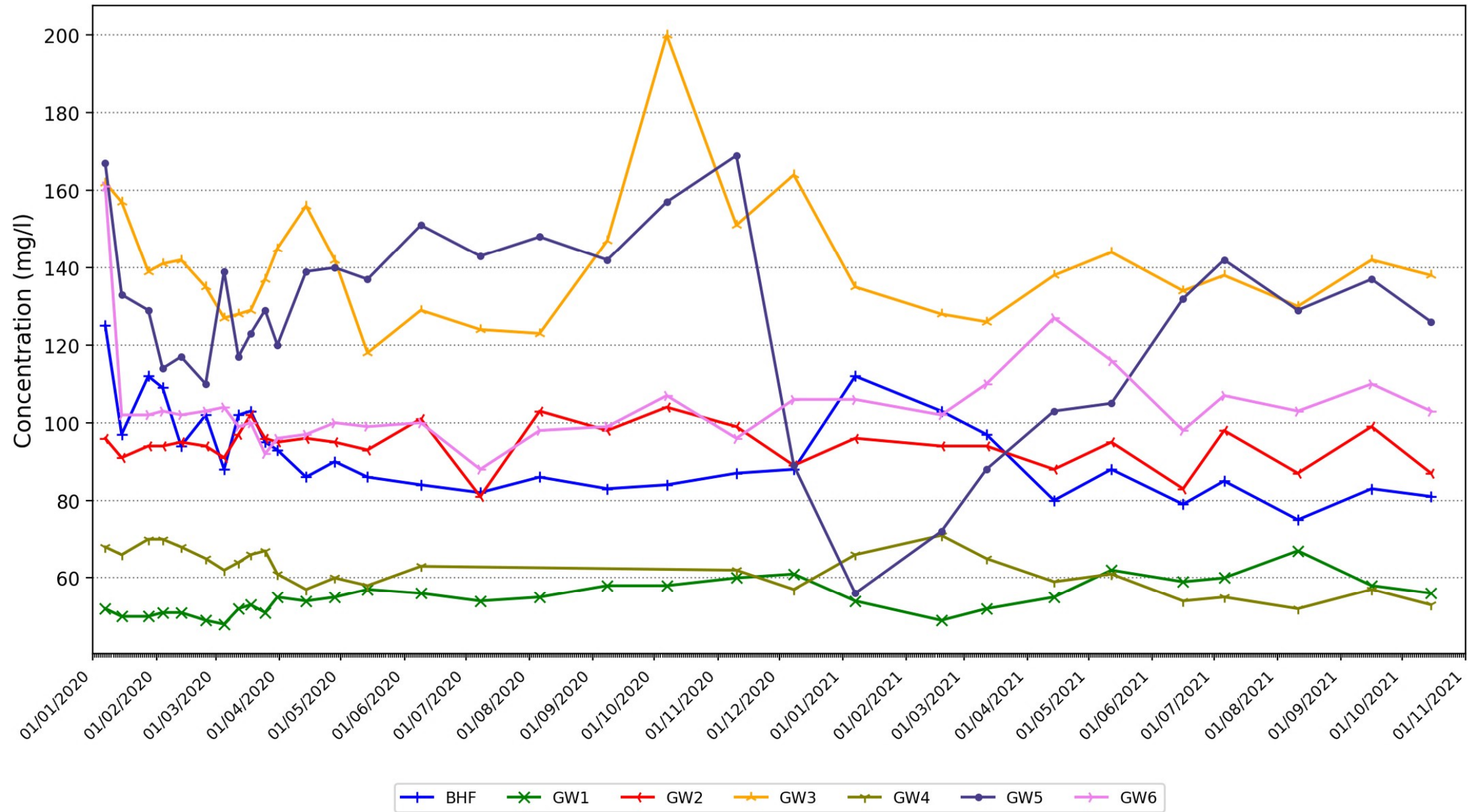
Graph showing the variation in total organic carbon at monitoring locations in the vicinity of Earls Barton Quarry



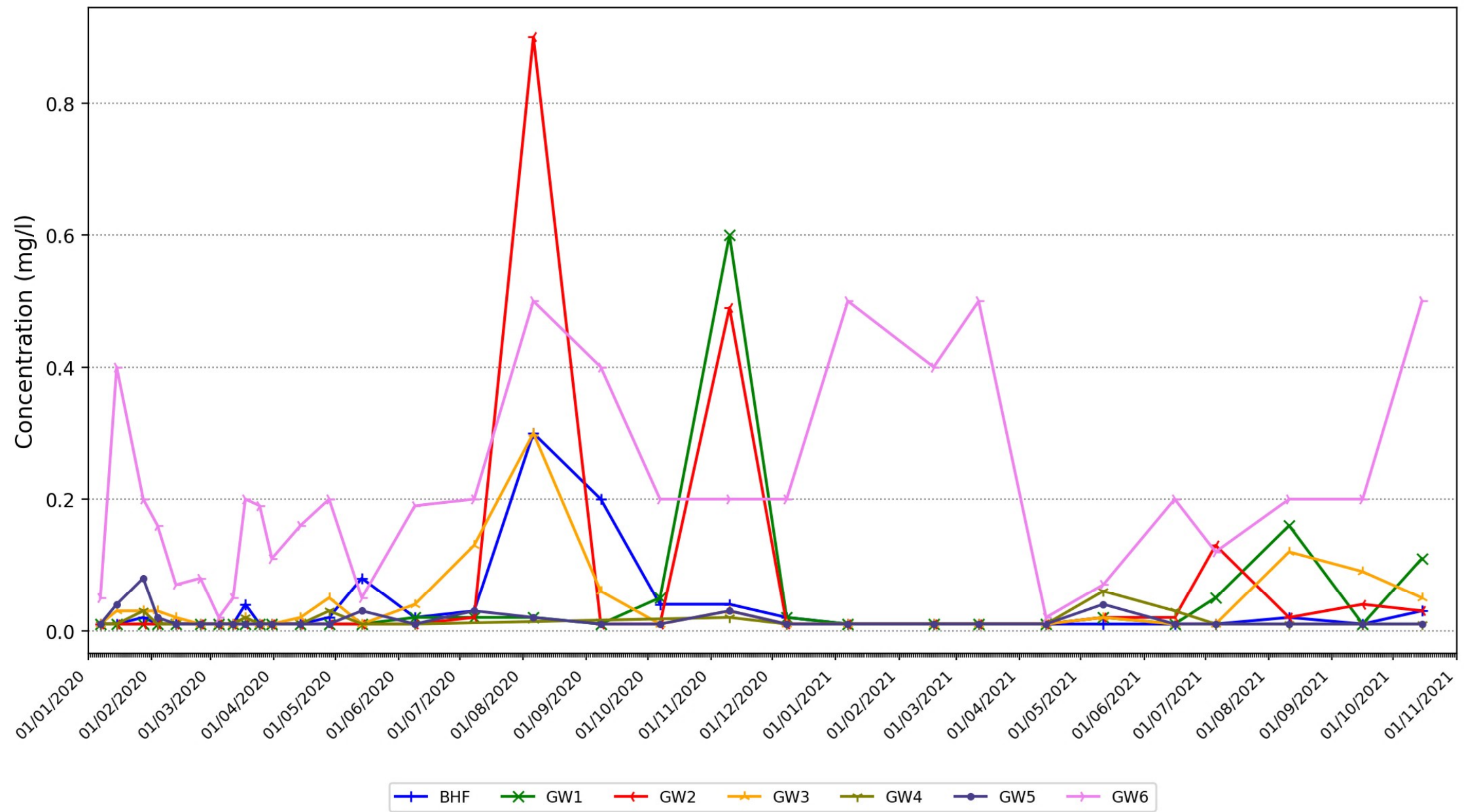
Graph showing the variation in total oxidised nitrogen at monitoring locations in the vicinity of Earls Barton Quarry



Graph showing the variation in total sulphur as SO₄ at monitoring locations in the vicinity of Earls Barton Quarry



Graph showing the variation in ammoniacal nitrogen at monitoring locations in the vicinity of Earls Barton Quarry



Graph showing the variation in groundwater levels in the groundwater monitoring boreholes in the vicinity of Earls Barton Quarry

