

---

## APPENDIX 10 – TOWNSCAPE AND VISUAL

---

## APPENDIX 10.1 FIGURES FOR ASSESSMENT



# CORBY ENERGY FROM WASTE

SHELTON ROAD, WILLOWBROOK INDUSTRIAL ESTATE

APPENDIX 10.1

FIGURES FOR THE TOWNSCAPE AND VISUAL ASSESSMENT

FEBRUARY 2019

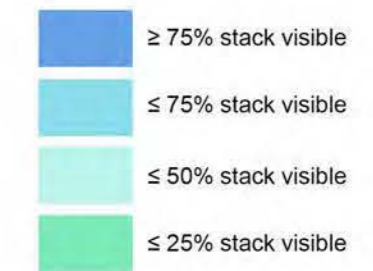
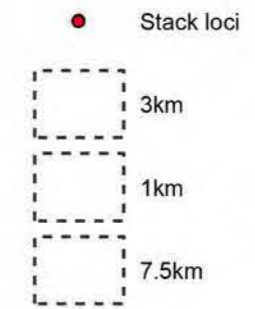
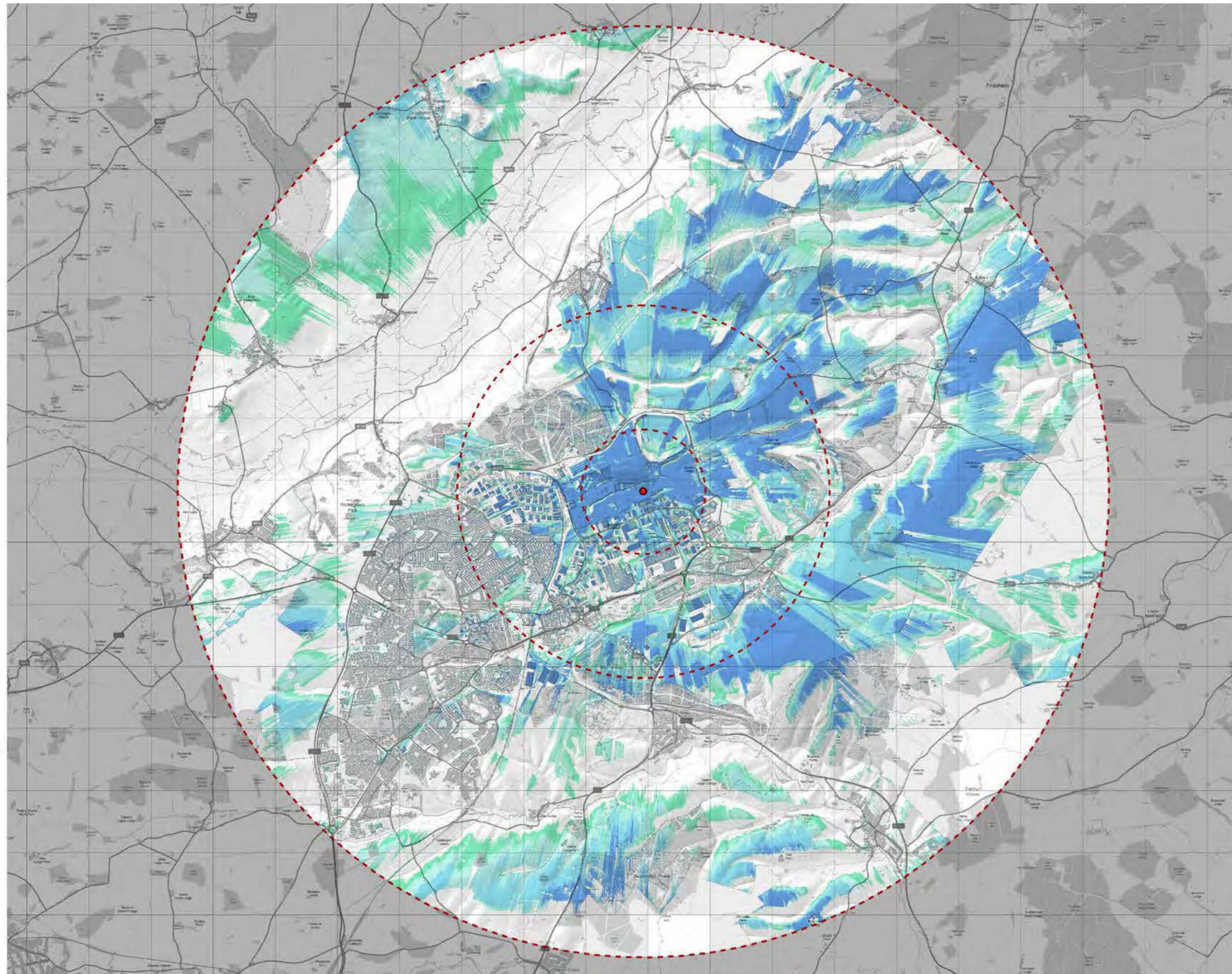


Figure A10.1: Location Plan and extent of the Landscape and Visual Study Area





Figure A10.2: Theoretical Zone of Visual Influence - DSM 75m

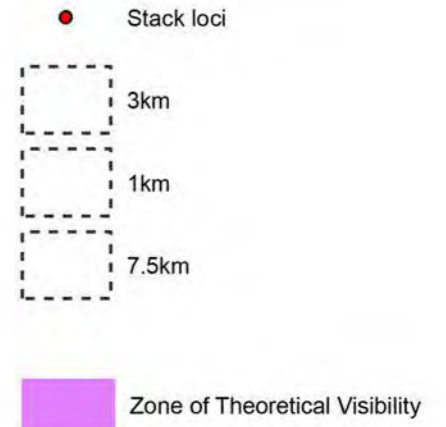
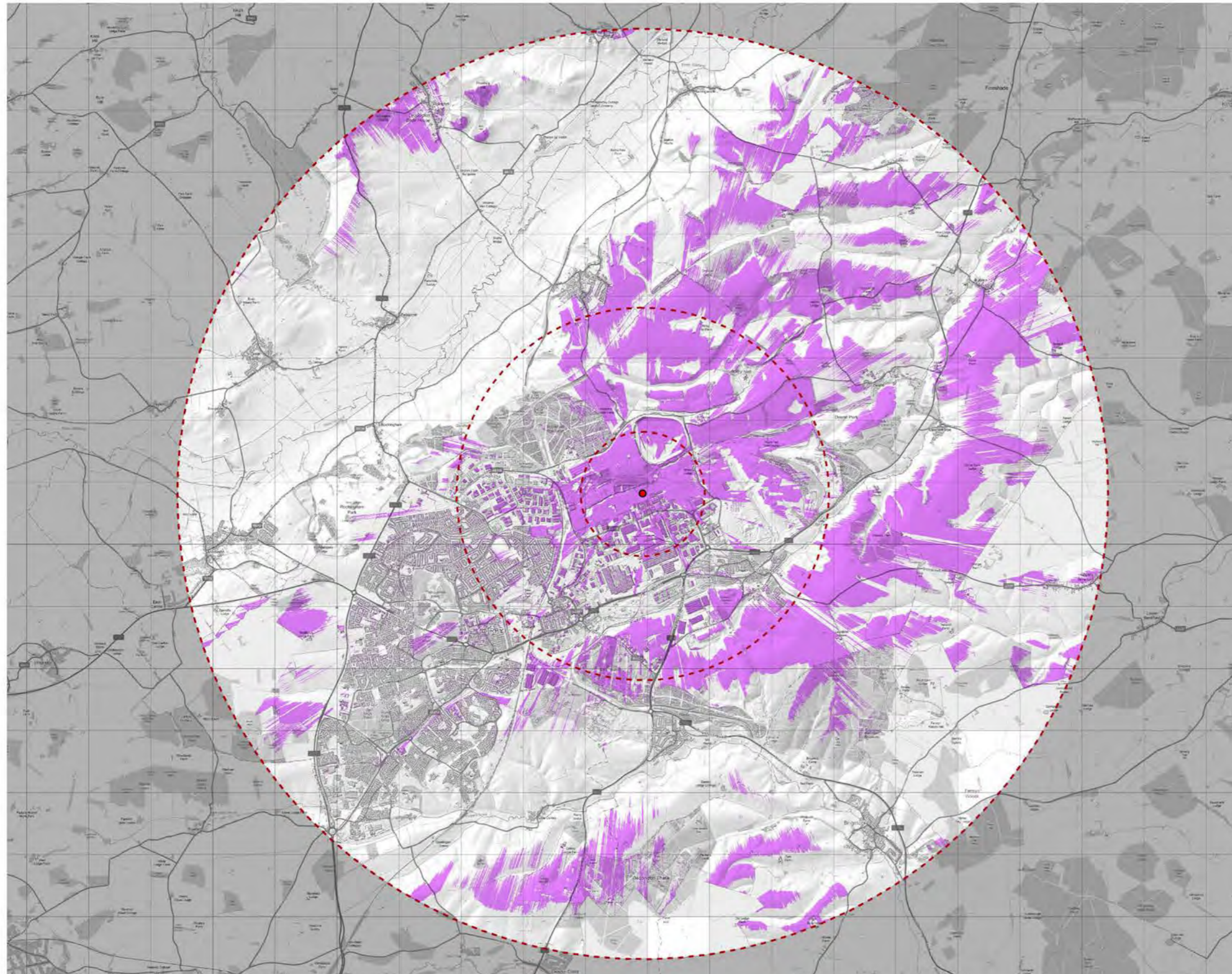


The ZTV is generated from a receptor height of 1.6 m (average eye level) and a receiver height of 75m i.e. the maximum development/stack height. The receiver target was placed at the proposed location for the stacks as shown on site plan drawing number 218097-0001 Rev P1'

Intervening surface features such as existing trees and buildings are included in the ZTV meaning the viewshed also illustrates potential views from ground level to roof tops and tree canopies. Some changes within the landscape may have occurred since. The ZTV includes Earth's curvature.



Figure A10.3: Theoretical Zone of Visual Influence - DSM Building 39.8m

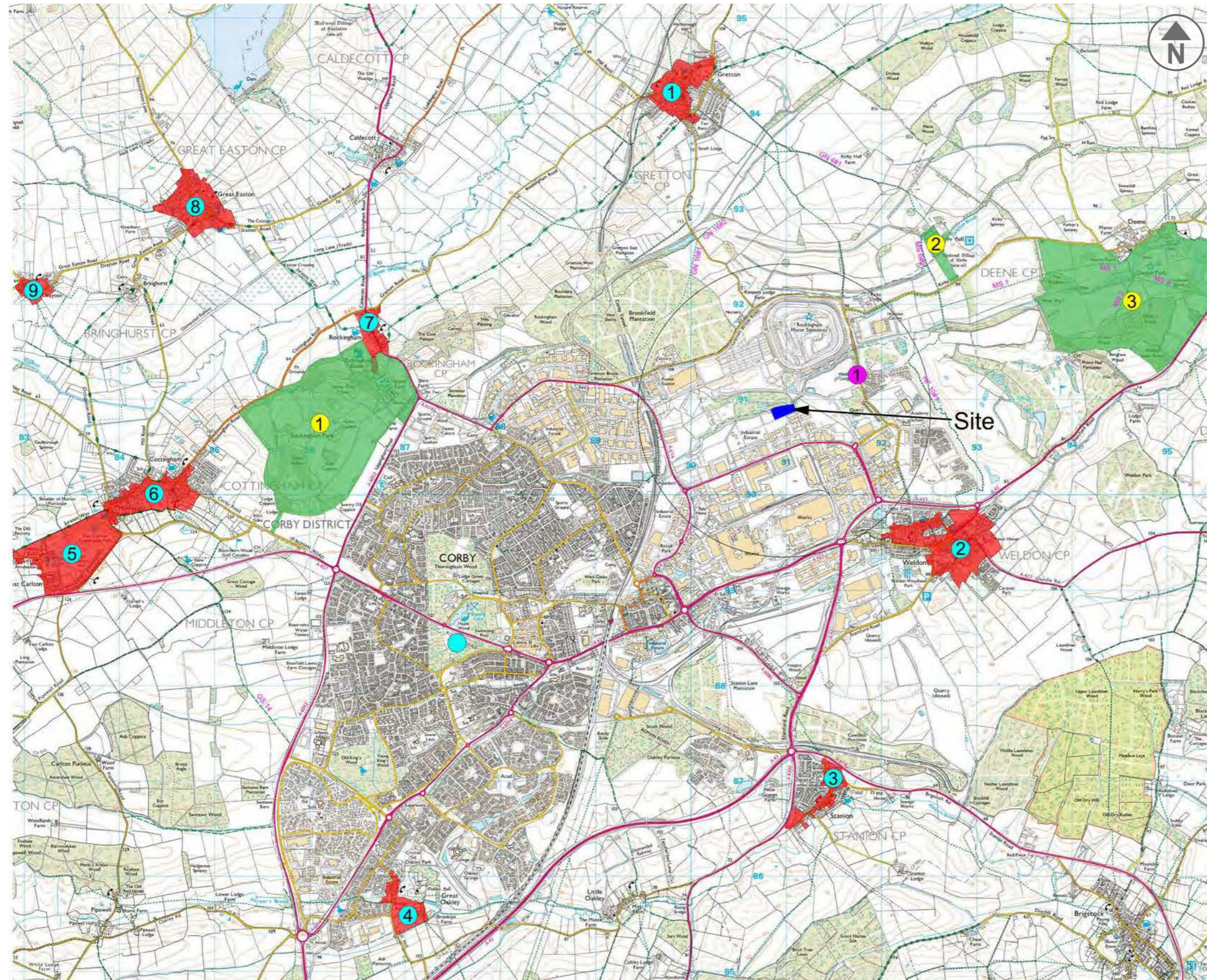


The ZTV is generated from a receptor height of 1.6 m (average eye level) and receiver height (in this case set as 39.8 m i.e. the maximum Boiler and FGT Hall height). A receiver target was placed at the datum point (50.5m AOD) within the site to best represent parts of the development which may be visible.

Intervening surface features such as existing trees and buildings are included in the ZTV meaning the viewshed also illustrates potential views from ground level to roof tops and tree canopies. Some changes within the landscape may have occurred since. The ZTV includes Earth's curvature.



Figure A10.4: Designations



**Key**

**Blue Dot – Conservation Areas**

1. Gretton
2. Weldon
3. Stanion
4. Great Oakley
5. East Carlton (proposed)
6. Cottingham and Middleton
7. Rockingham
8. Great Easton
9. Clayton

**Yellow Dot – Parks and Gardens**

1. Rockingham Castle – Grade II\*
2. Kirby Hall – Grade II\*
3. Deene Park – Grade II

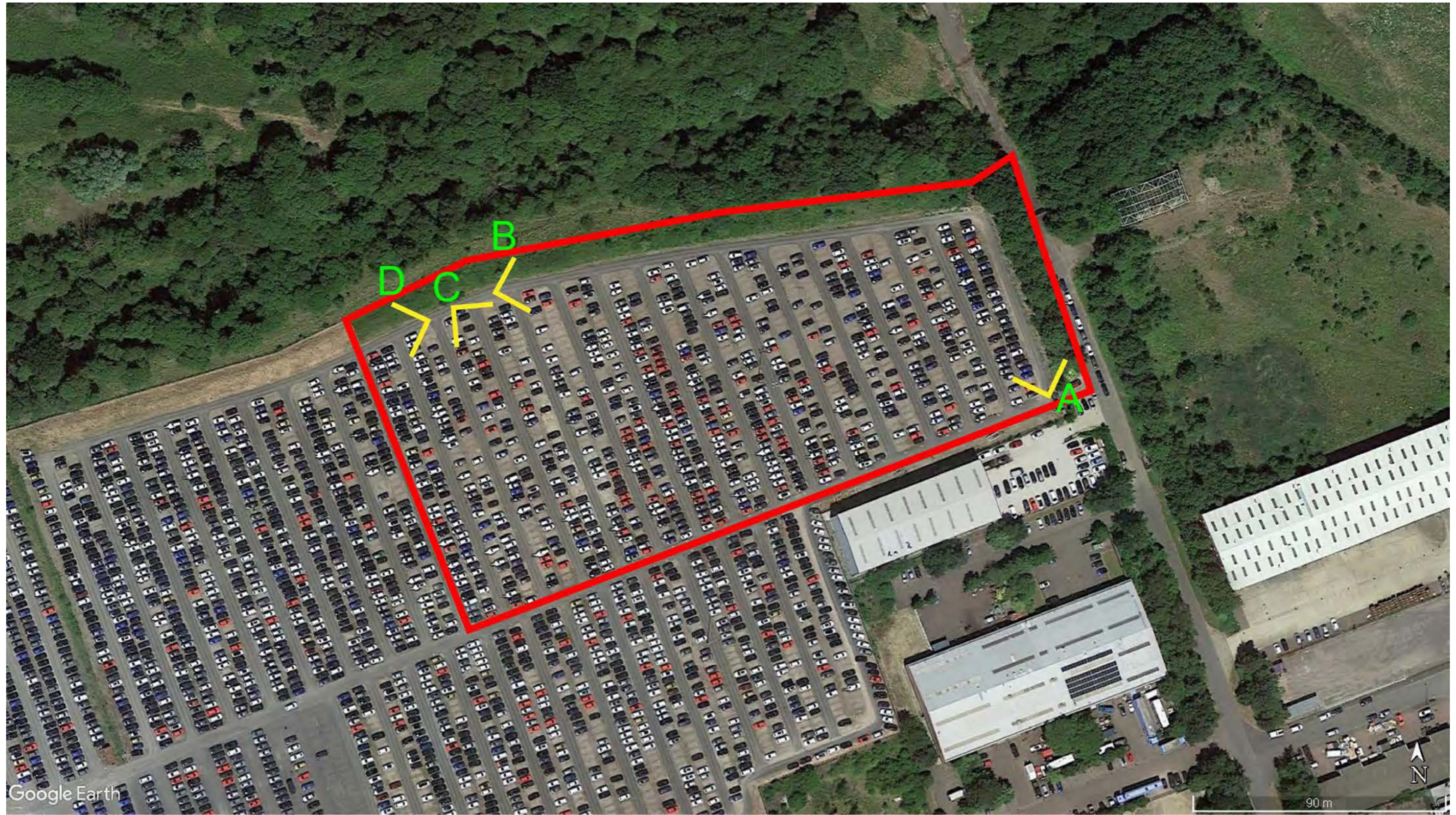
**Pink Dot - Historic Buildings (within 1.5 km of Site)**

1. Weldon Lodge – Grade II

OS Copyright Licence: Sightline Landscape 0100031673



Figure A10.5: Internal Viewpoint locations





**Figure A10.6A & B: Internal Views of the Site**



**Viewpoint A**

A view along the east boundary showing the line of mature trees.

**Viewpoint B**

A view from the northern boundary looking southeast illustrating the enclosure at ground level.





Figure A10.6C & D: Internal Views of the Site



**Viewpoint C**

A view from the northern boundary illustrating the low level enclosure of the adjacent buildings.



**Viewpoint D**

A view looking southwest illustrating the expanse of car parking and limited visual receptors.