

| | | | |
|-------------------------------------------|----------|-------------------------|-----------|
| 04 | 10/03/21 | Mobile AIO Installation | M Dorrell |
| No. | Date: | Detail: | Approval: |
| Revision only NO HAZOP Survey carried out | | | |

anglianwater
Quality Assurance

Title **WHILTON STW. DRAWING 1 of 3**

| | | |
|--------------------------|----------------------------------------------|--------------------------|
| Serial No: 001 | Doc Number: RWW-LDC-HAZOP-(WHILST) | Revision No: 3 |
|--------------------------|----------------------------------------------|--------------------------|

Drawn By: **C.BROWN** Date: **13/10/2015**
 Ammended by: **N CROSSFIELD**
 Signed: **NC**

Agreed: **T.HILSDEN** Date: **12/10/2015**
 Manager: **TH**

LEGEND

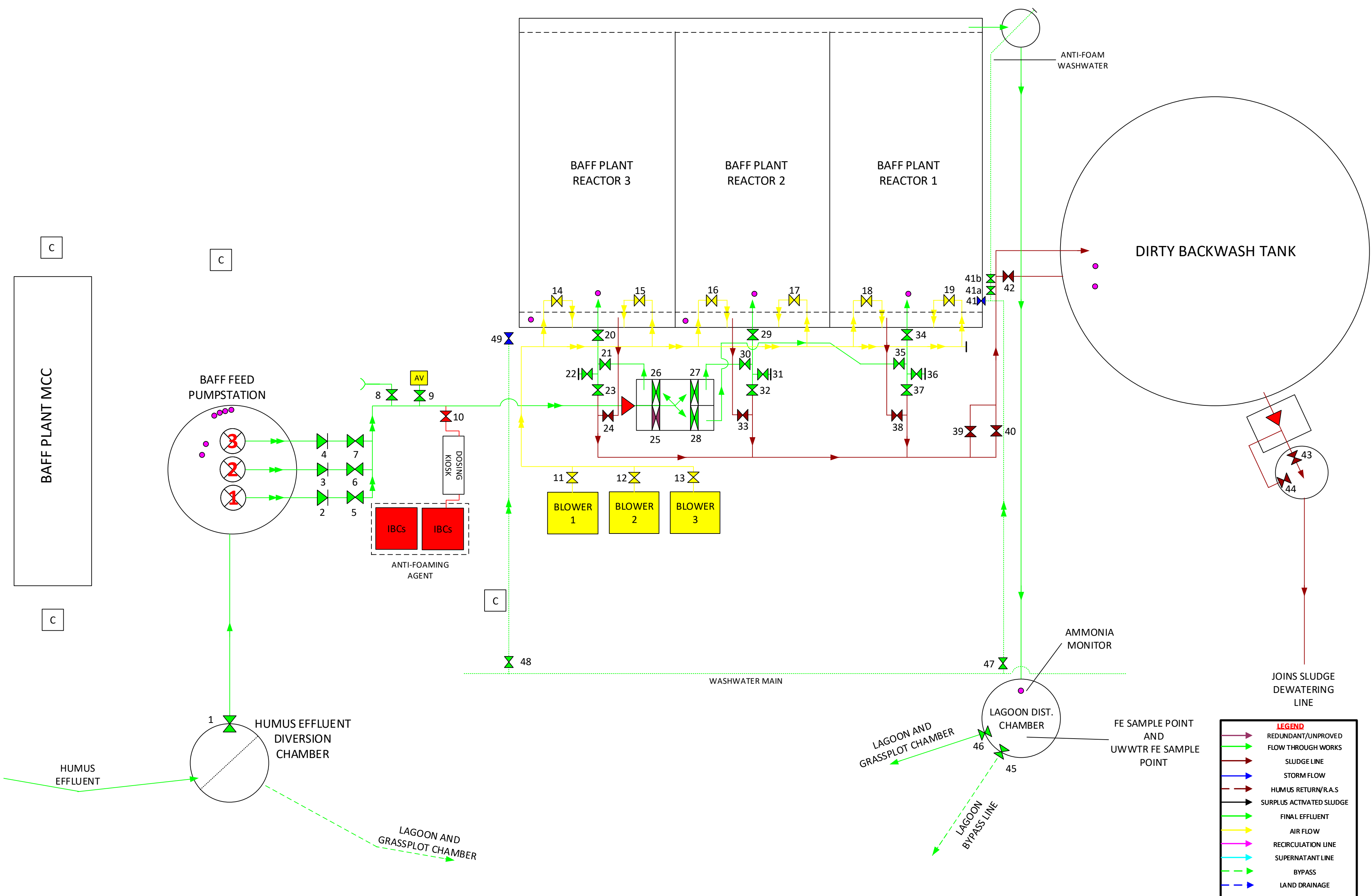
- REDUNDANT/UNPROVED
- FLOW THROUGH WORKS
- SLUDGE LINE
- STORM FLOW
- HUMUS RETURN/R.A.S
- SURPLUS ACTIVATED SLUDGE
- FINAL EFFLUENT
- AIR FLOW
- RECIRCULATION LINE
- SUPERNATANT LINE
- BYPASS
- LAND DRAINAGE
- PUMPED LINES AS COLOURED
- PUMPED LINES AS COLOURED
- FLOATS/PROBES/MILLTRONICS
- ▶ FLOW METER
- ▶ CHEMICAL DOSING

EFFLUENT PUMPED TO CANAL AND DISCHARGES AT GRID REF. SP6045568

BAFF PLANT-SEE DRAWING 2 FOR MORE INFO

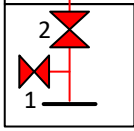
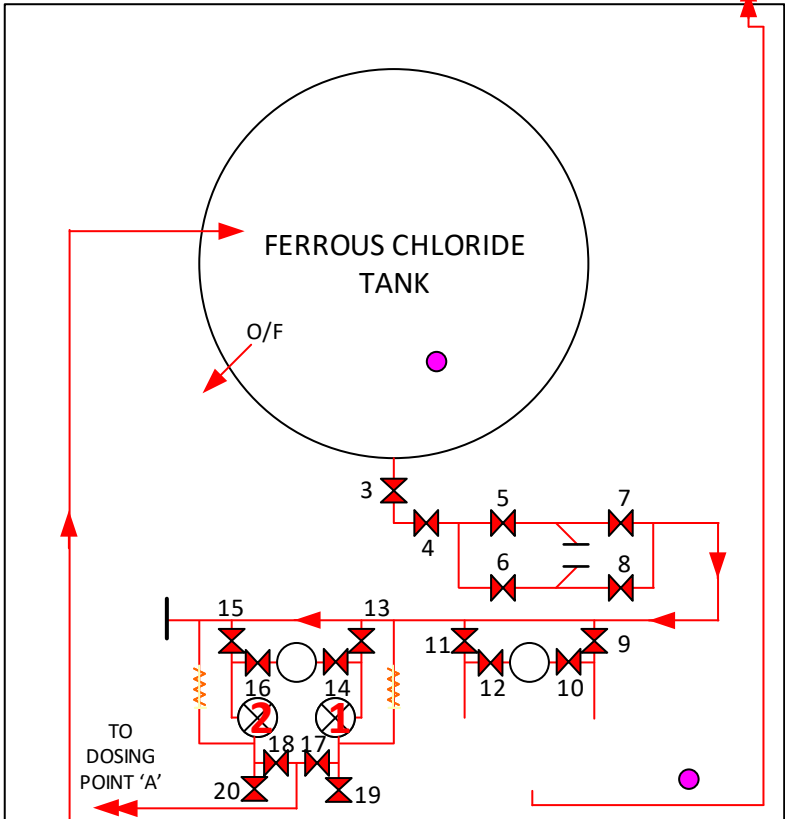
NO. 2 PH SEE PUMPHOUSE 2 DRAWING

WHILTON BRANCH OF THE RIVER NENE



| LEGEND | |
|--------|---------------------------|
| | REDUNDANT/UNPROVED |
| | FLOW THROUGH WORKS |
| | SLUDGE LINE |
| | STORM FLOW |
| | HUMUS RETURN/R.A.S |
| | SURPLUS ACTIVATED SLUDGE |
| | FINAL EFFLUENT |
| | AIR FLOW |
| | RECIRCULATION LINE |
| | SUPERNATANT LINE |
| | BYPASS |
| | LAND DRAINAGE |
| | PUMPED LINES AS COLOURED |
| | FLOATS/PROBES/MILLTRONICS |
| | FLOW METER |
| | CHEMICAL DOSING |

TO DOSING
POINT 'B'
(REDUNDANT?)



CONTROL PANEL

| | | |
|-------------------------------------------------------------------------------|---------------------------------------|--------------------------|
| anglianwater | | Quality Assurance |
| Title: WHILTON WRC – FERROUS CHLORIDE DOSING PUMPS AND TANK DRAWING 3 of 3 | | |
| Serial No: 001 | Doc Number: RWW-LDC-HAZOP-(WHILST) | Revision No: 1 |
| Drawn By: N.CROSSFIELD | Date: 13/10/2015 | |
| Signed: NC..... | | |
| Agreed: T.HILSDEN Manager:TH. | Date: 12/10/2015 | |