

If there should be any doubt or query regarding the interpretation of the information given on this Drawing, please enquire directly to Rolton Group Ltd before executing such part of the works.

The contents of this drawing are strictly confidential and must not in any circumstances be copied, shown, published or otherwise disclosed to anyone, outside the Rolton Group without express consent in writing.



NOTES

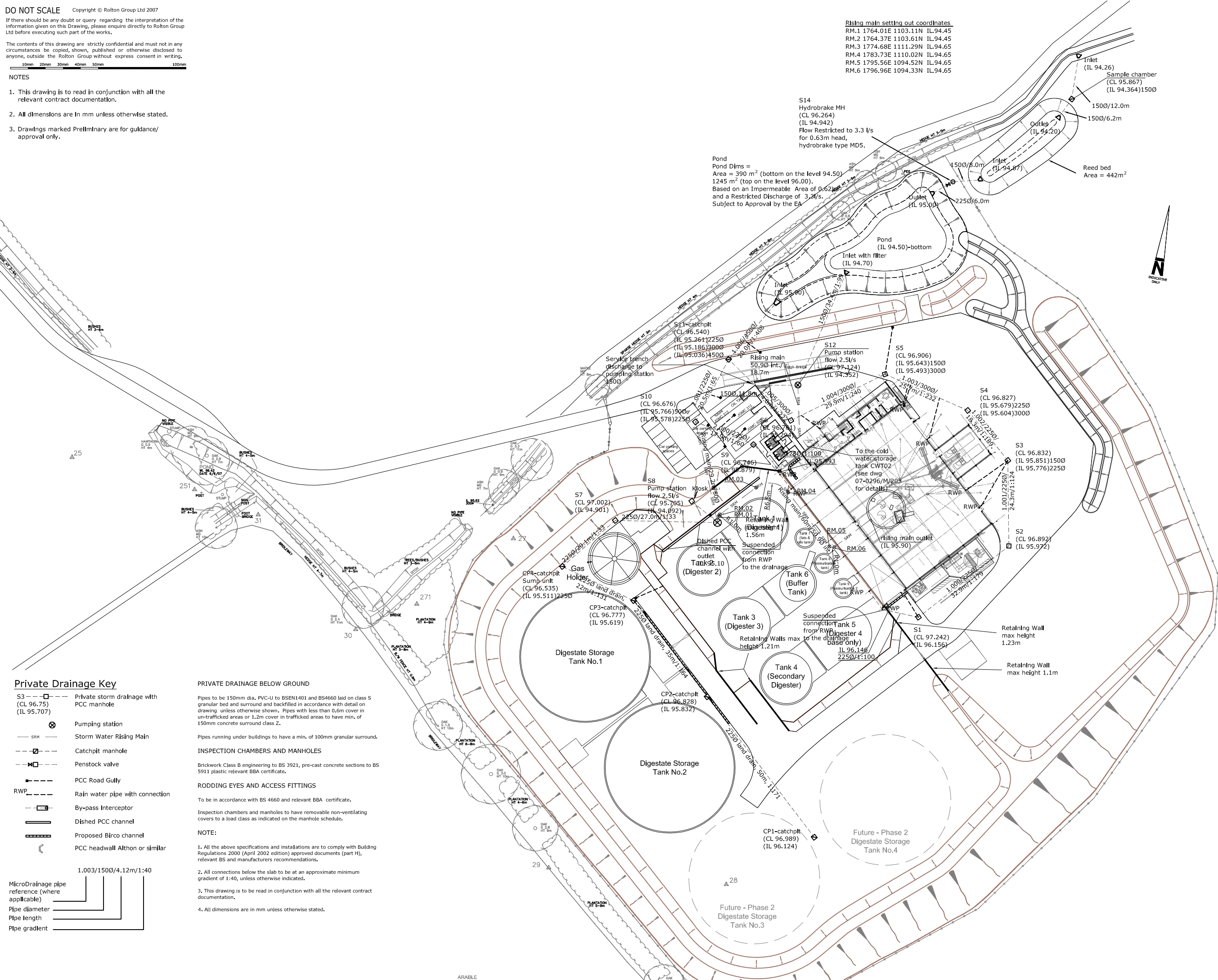
1. This drawing is to read in conjunction with all the relevant contract documentation.
2. All dimensions are in mm unless otherwise stated.
3. Drawings marked Preliminary are for guidance/ approval only.

Rising main setting out coordinates
 RM.1 1764.01E 1103.11N IL.94.45
 RM.2 1764.37E 1103.61N IL.94.45
 RM.3 1774.68E 1111.29N IL.94.65
 RM.4 1783.73E 1110.02N IL.94.65
 RM.5 1795.56E 1094.52N IL.94.65
 RM.6 1796.96E 1094.33N IL.94.65

S14 Hydrobrake MH (CL 96.264) (IL 94.942)
 Flow Restricted to 3.3 l/s for 0.63m head, hydrobrake type MD5.

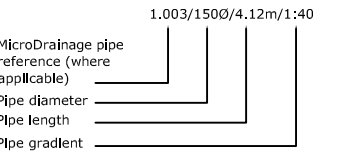
Pond
 Pond Dims =
 Area = 390 m² (bottom on the level 94.50)
 1245 m² (top on the level 96.00).
 Based on an Impermeable Area of 0.62ha
 and a Restricted Discharge of 3.2l/s.
 Subject to Approval by the EA

Reed bed Area = 442m²



Private Drainage Key

- S3 - Private storm drainage with PCC manhole (CL 96.75) (IL 95.707)
- ⊗ Pumping station
- SRM Storm Water Rising Main
- Catchpit manhole
- ⊞ Penstock valve
- PCC Road Gully
- RWP Rain water pipe with connection
- By-pass Interceptor
- Dished PCC channel
- Proposed Birco channel
- PCC headwall Althon or similar



PRIVATE DRAINAGE BELOW GROUND

Pipes to be 150mm dia. PVC-U to BSEN1401 and BS4660 laid on class 5 granular bed and surround and backfilled in accordance with detail on drawing unless otherwise shown. Pipes with less than 0.6m cover in un-trafficked areas or 1.2m cover in trafficked areas to have min. of 150mm concrete surround class Z.

INSPECTION CHAMBERS AND MANHOLES

Brickwork Class B engineering to BS 3921, pre-cast concrete sections to BS 5911 plastic relevant BBA certificate.

RODDING EYES AND ACCESS FITTINGS

To be in accordance with BS 4660 and relevant BBA certificate. Inspection chambers and manholes to have removable non-ventilating covers to a load class as indicated on the manhole schedule.

- NOTE:
1. All the above specifications and installations are to comply with Building Regulations 2000 (April 2002 edition) approved documents (part H), relevant BS and manufacturers recommendations.
 2. All connections below the slab to be at an approximate minimum gradient of 1:40, unless otherwise indicated.
 3. This drawing is to be read in conjunction with all the relevant contract documentation.
 4. All dimensions are in mm unless otherwise stated.



Telephone +44 (0)870 726 0000
 Fax +44 (0)870 726 0222
 www.rolton.com

- THE CHARLES PARKER BUILDING
 MIDLAND ROAD, HIGHAM FERRERS
 NORTHANTS NN10 8BN
- NO 1 MINERVA BUSINESS PARK
 LYNCH WOOD
 PETERBOROUGH PE2 6FT
- NO 6 THE COURTYARD
 WARWICK ROAD, SOLIHULL
 WEST MIDLANDS B91 3DA
- NO 16 NAPIER COURT
 BARLBOROUGH LINKS
 DERBYSHIRE S43 4PZ



Dimensions provided for construction.
 All dimensions to be checked on site.

FINAL DESIGN ISSUE

10.06.09 This drawing was created from drawing 07-0296/INF/03 rev C11

Rev.	Date	Description of Issue	Chkd

Issue Purpose:
Final Design

Project
**Biogen (UK) Ltd
 AD Power Station
 Westwood Plant**

Drawing Title:
**Storm Water
 Drainage Layout**

Designer's Risk Assessment Reference:
CIVILSDRA01

Specification Reference:
 N/A

Drawn By: **AJM** Checked By: **SDP**

Scales: **1:500@A1** Date: **26.09.07**
1:1000@A3

Drawing No. _____ Rev. _____