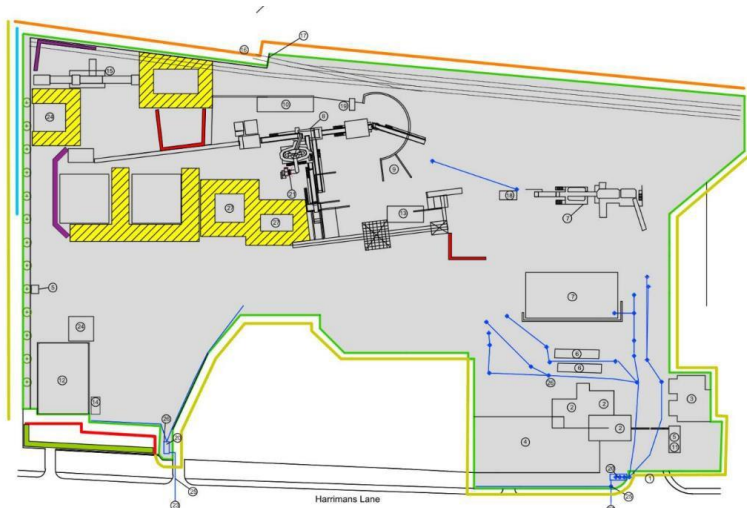


WARD

Site Condition / Base Line Summary Nottingham

Site Plan / Location



Address

Harriman's Lane
Dunkirk
Nottingham
NG7 2SD

The site comprises a metal recycling facility covering an area of approximately 2.9ha that receives, processes and recovers ferrous and non-ferrous metals from scrap and acts primarily as a source of ferrous feedstock for the steel manufacturing industry both in UK and abroad.

The site has operated under the control of Environmental Permit EPR/BP3790CG/V006 with the original Waste Management Licence initially issued on 22 February 1993 to McIntyre Metals Plc and subsequently was issued with reference EAWML/43449. The last operator of the site was Unimetals Recycling (UK) Limited.

The site benefits from improving concrete (laying of a reinforced concrete slab, approximately 200mm thick) and installation of a reinforced concrete upstand (bund) to provide a 300mm high unit around the slab. Surface water drainage at the site discharges partly to controlled water course, partly to municipal sewer. Approximately half of the surface water drainage system flows via a class 1 full retention oil water separator, located to the east of the yard, prior to discharge to surface water drainage on Harrimans Lane, which ultimately discharges to controlled watercourse Tottle Brook (c.460 m north-west). The remaining half discharges via a class1 full retention oil water separator to the foul sewer on Harrimans Lane (under a trade effluent discharge consent T/64/45170/R, issued by the Severn Trent Water Company).

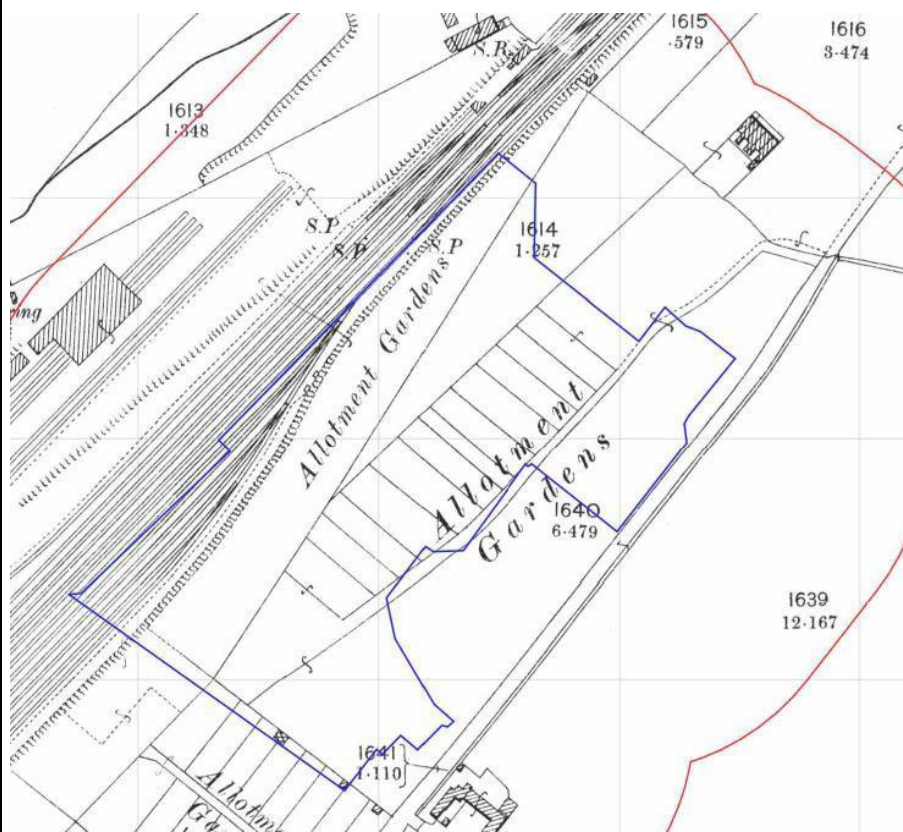
Made Ground is indicated to be present across the site, described as Artificially modified ground in the BGS records. The superficial geology at the site is Alluvium – clay, silt, sand and gravel. The bedrock at the site is Radcliffe Member – Mudstone and Siltstone.

The site is indicated to be underlain by a Secondary A aquifer (Alluvium) with a Secondary B aquifer below (Radcliffe Member).

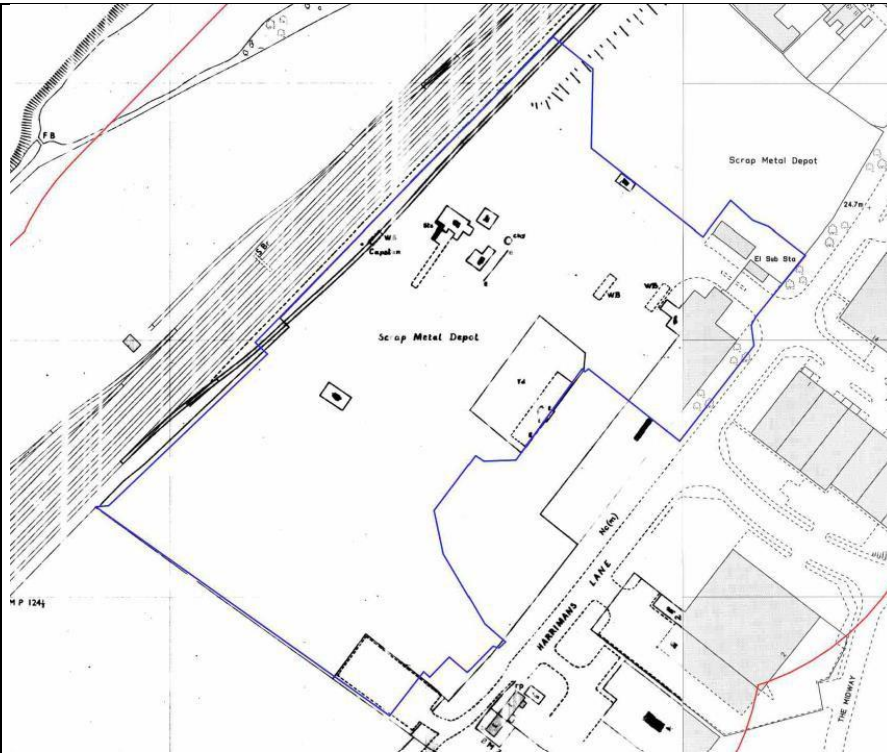
Historical maps from 1881 to 1885 show that during this period the site was undeveloped with evidence of railway tracks along the west boundary of the site with an associated signal post. In 1901 the majority of the site was occupied with allotment gardens. The site remained largely unchanged until 1970-1973 when the railway was no longer evident on site with limited aside from a number of small buildings in the south and various allotment buildings.

In 1974-1975 the site was labelled as a scrap metal depot, undergoing subsequent development, which remains until the present day.

**Historical
Review**



1901 map edition



1974 map edition

A number of planning records are readily available for the site. These date from 1974 and include: the installation of shearing machines (1975 and 1979); an extension to the foundry (1988); installation of air improvement plant (1988); provision of a shredder (1999); construction of a new workshop (2001); and installation of pre-shredder plant to processing yard and processing operations.

End of Summary