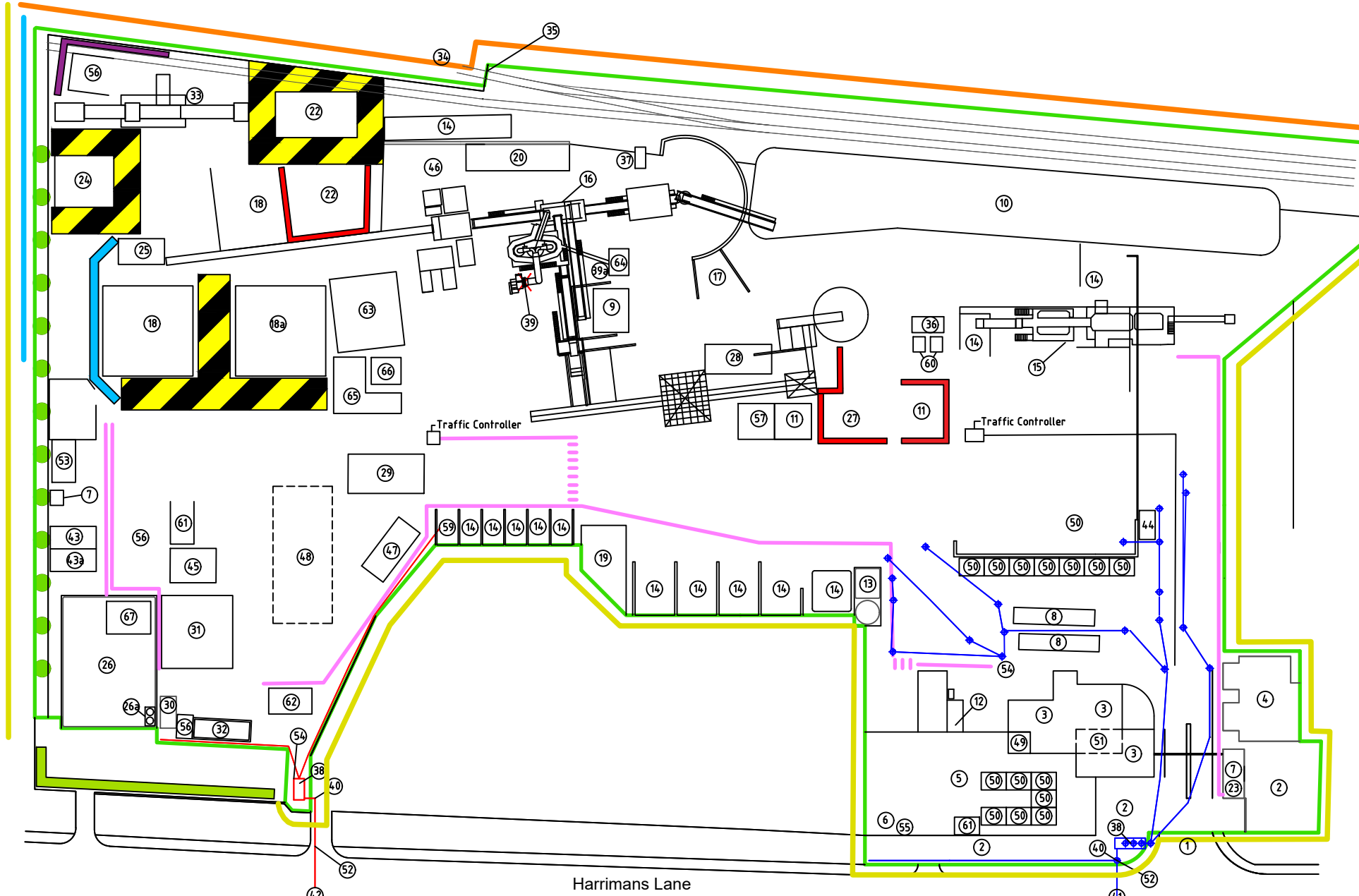


Prevailing Wind Direction →



Legend

- 1: Entrance From & Exit to Harrimans Lane + 24hr Availability to Fire Service Vehicles
- 2: Car Parking
- 3: Offices
- 4: Welfare Facilities
- 5: Non Ferrous Building
- 6: Spare Parts Store
- 7: HV Transformer
- 8: Weighbridge
- 9: Residue
- 10: Frag Storage Area
- 11: SDA Waste/Residue (Combustible)
- 12: Kerosine Storage Tanks
- 13: Oil/Diesel Storage Tanks
- 14: Storage Bays
- 15: TAPO Plant
- 16: Shredder Plant (Metal Treatment)
- 17: Shredded Ferrous
- 18: Frag Feed x 2: 20x20x4 (Combustible)
- 18a: Pre Shredder Output
- 19: Turnings
- 20: Substation
- 21: Li-ion Batteries
- 22: Pretreated SMW (Combustible)
- 23: HV Substation
- 24: SMW (Small Mixed (WEEE) (Combustible)
- 25: Temporary Quarantine Area
- 26: ELV Treatment Building
- 26a: ELV Depollution Air Con Gas Cylinder
- 27: Waste (Combustible)
- 28: Air Knife Plant
- 29: 'Hot Load' Temporary Storage
- 30: ELV Office
- 31: Undepolluted ELV (Combustible)
- 32: ELV Residues/Liquid Storage Tanks
- 33: SMW Treatment Plant
- 34: Rail Connection To E,W,S Main-Line
- 35: 3Mts High Steel Gates Padlocked By E,W,S Railways
- 36: Borehole (Water)
- 37: Rail Link Office
- 38: Interceptor
- 39: Emission to Air (A1)
- 39a: Emission to Air (A1a)
- 40: Sample Point
- 41: Discharge To Surface Water
- 42: Discharge To Sewer
- 43: Orphaned Gas Cylinder
- 43a: Laptops
- 44: Gas Cylinder (for hot work oxy-propane)
- 45: Tyres
- 46: Water Tank
- 47: Fines
- 48: Mobile Plant Parking
- 49: Non Ferrous Office
- 50: Non Ferrous Scrap
- 51: Meeting Room (1st Floor)/Flood Escape
- 52: Location where Bung will be Dispatched in Event of Emergency
- 53: End of Life Fridges (ELF)
- 54: Drain Bung
- 55: COSHH
- 56: Battery Storage
- 57: 95% Residue (Aluminium)
- 58: SDA Residue (Combustible)
- 59: Sand
- 60: Container Load
- 61: Quarantine Radiation
- 62: Spares / Stock
- 63: Pre Shredder
- 64: New Air System
- 65: Pre Shredder Stockpile Infeed
- 66: Dunk Tank
- 67: Quarantine

Legend

- Site Boundary
- Site Drainage
- Steel Plated Wall
- Concrete A block Wall
- Sleeper Wall
- Metal Security Fence
- Natural Ground
- 6 metre Fire Break Between x2 Stockpiles
- 6m
- 240 Minute Fire Resistant Walls
- WEEE Components / Battery Storage
- Bunded Wall
- Pedestrian Walkway

Project NOTTINGHAM

Title SITE LAYOUT