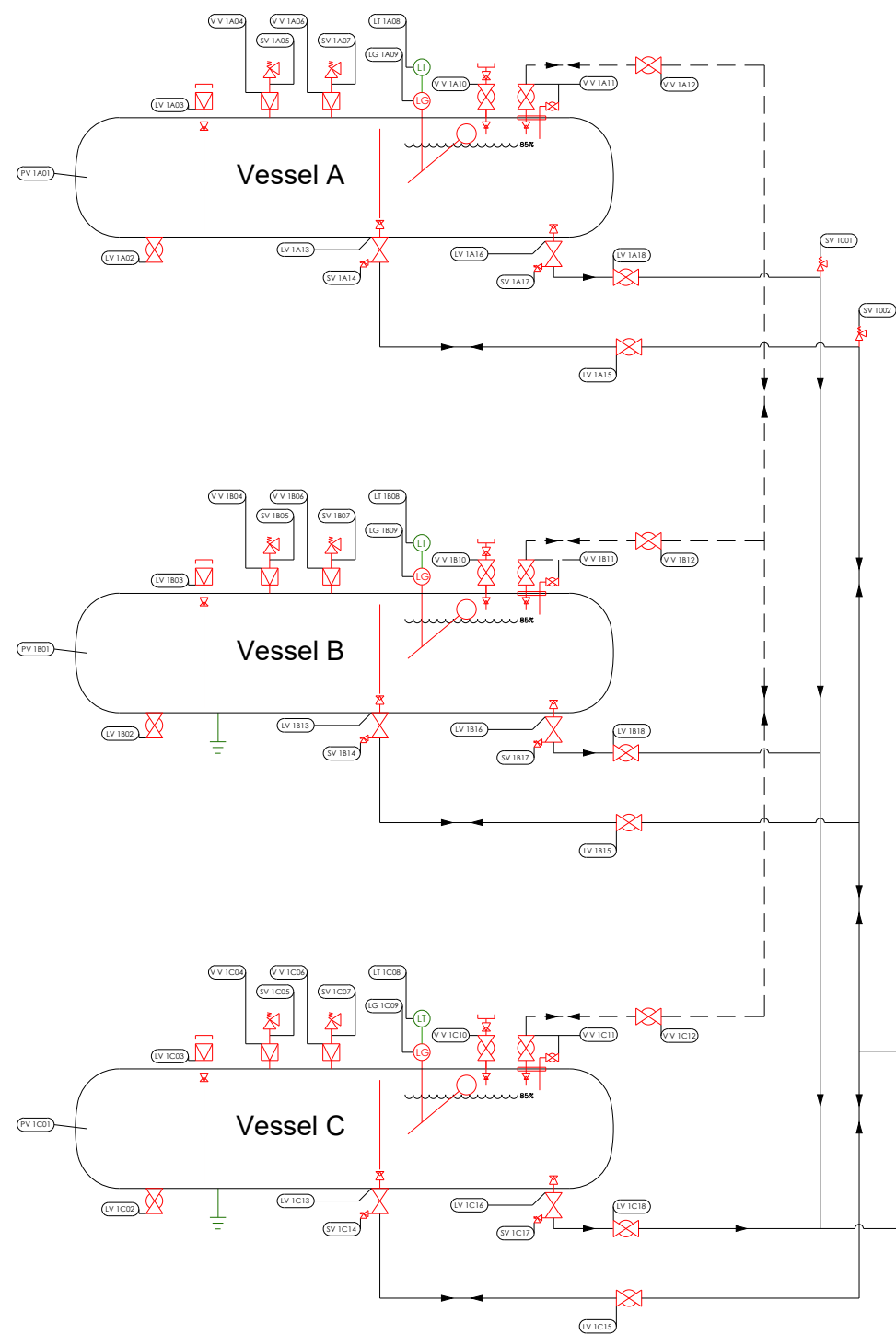
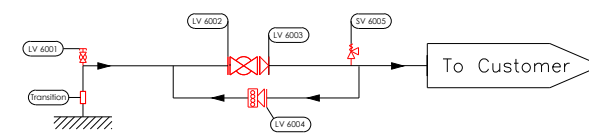


Vessels - SH02 + SH03

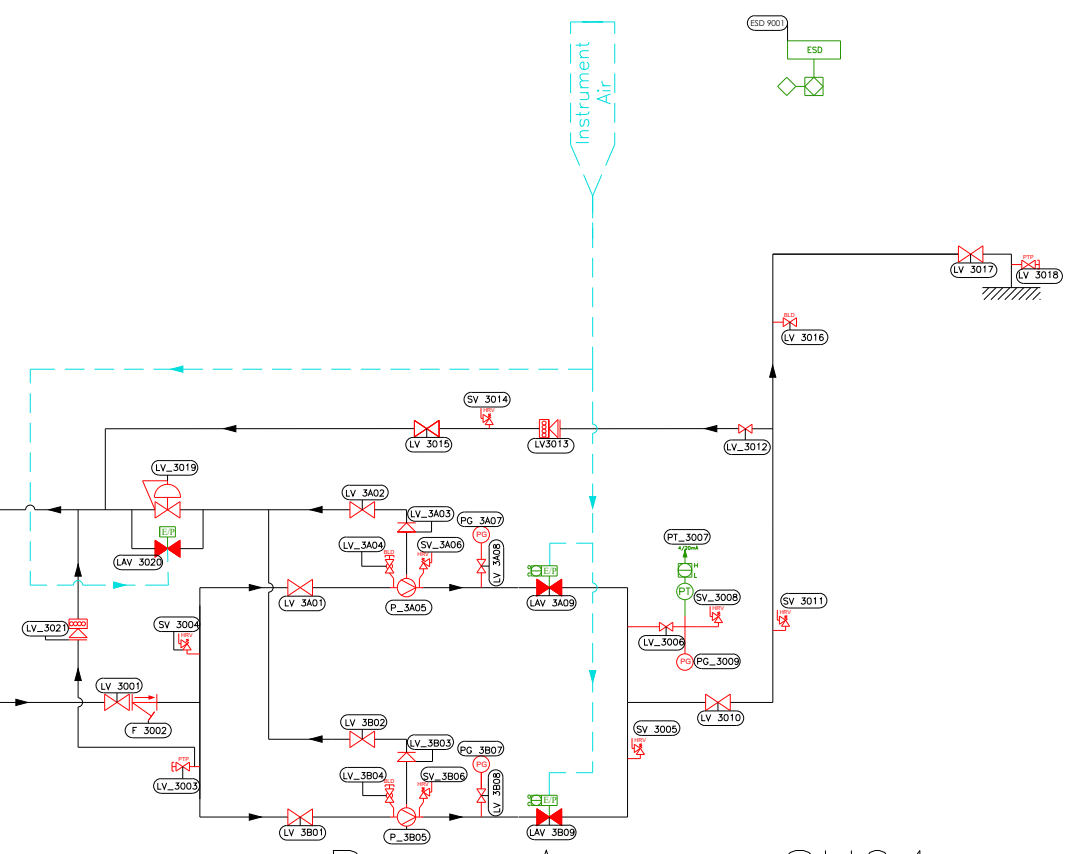


To Customer - SH05



CONSTRUCTION ISSUE

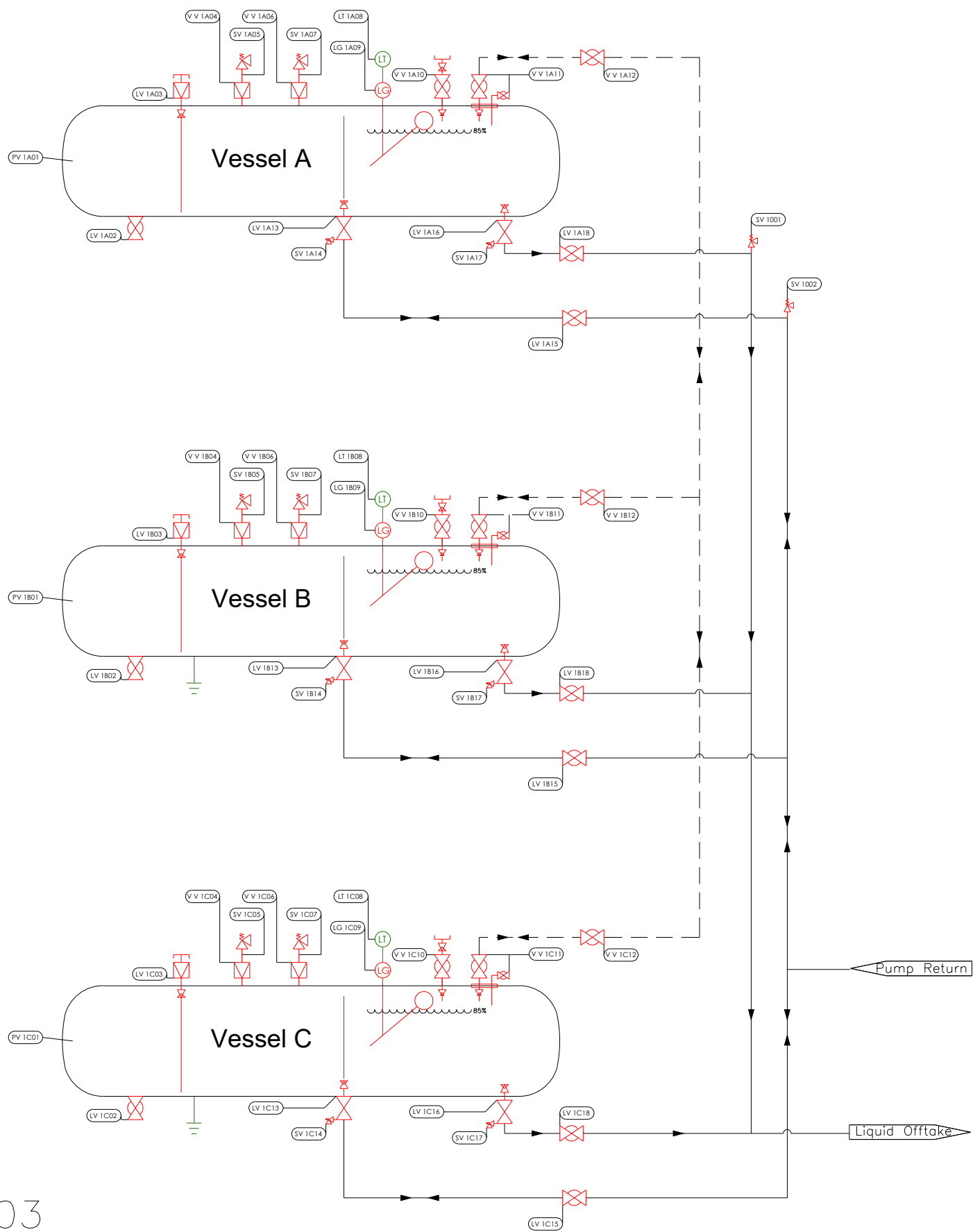
Pump Area - SH04



REV	DRAWN	DATE	CHKD	DATE	APPD	DATE	MODIFICATION
7							
6							
5							
4							
3							
2							
1	PJ	07/10/20	RW	07/10/20			POSITION SENSOR REMOVED FROM LAV 3020. CONSTRUCTION ISSUE.
0	PJ	11/08/20					INITIAL ISSUE.

TITLE	P&ID Extents Air Liquide - Biodynamic 3 x 4 T AG Pumped Liquid - Biomethane
FLOGAS REF:	C2814
CLIENT ORDER REF:	
CLIENT:	Air Liquide
TOLERANCE:	NA

		FLOGAS BRITAIN LIMITED WATERMEAD BUSINESS PARK, RAYNS WAY, SYSTEM, LEICESTER LE7 1PF, United Kingdom Tel: +44 (0) 1162 649 000 Fax: +44 (0) 1162 649 012 Email: flogasenergyservices@flogas.co.uk Website: www.flogas.co.uk
SCALE	NTS @ A3	SHEET 1 OF 6
DRG. No. 2278-1		REV 1



**CONSTRUCTION ISSUE**

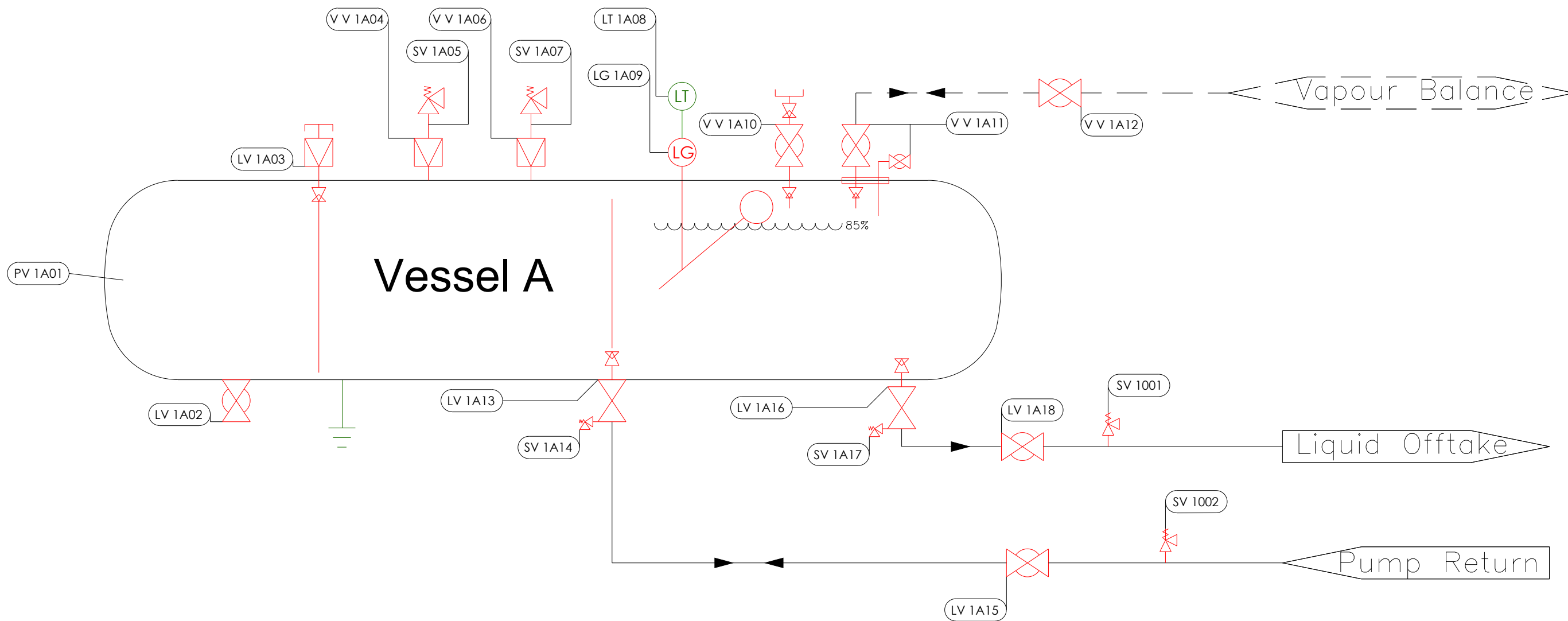
Vessels - SH02 + SH03

7							
6							
5							
4							
3							
2							
1	PJ	07/10/20	RW	07/10/20			POSITION SENSOR REMOVED FROM LAV 3020. CONSTRUCTION ISSUE.
0	PJ	11/08/20					INITIAL ISSUE.
REV	DRAWN	DATE	CHKD	DATE	APPD	DATE	MODIFICATION
a	b	c	d	e	f	g	h

TITLE	Vessel Area Air Liquide - Biodynamic 3 x 4 T AG Pumped Liquid - Biomethane
FLOGAS REF:	C2814
CLIENT ORDER REF:	
CLIENT:	Air Liquide
TOLERANCE:	NA

		FLOGAS BRITAIN LIMITED WATERMEAD BUSINESS PARK, RAYNS WAY, SYSTEM, LEICESTER LE7 1PF, United Kingdom Tel: +44 (0) 1162 649 000 Fax: +44 (0) 1162 649 012 Email: flogasenergyservices@flogas.co.uk Website: www.flogas.co.uk
SCALE	NTS @ A3	SHEET 2 OF 6
DRG. No 2278-2		REV 1

Note: Additional Vessels are identically valved. Valve numbers remain the same with "A" replaced with latter letters of the alphabet e.g. "B, C, D... etc."

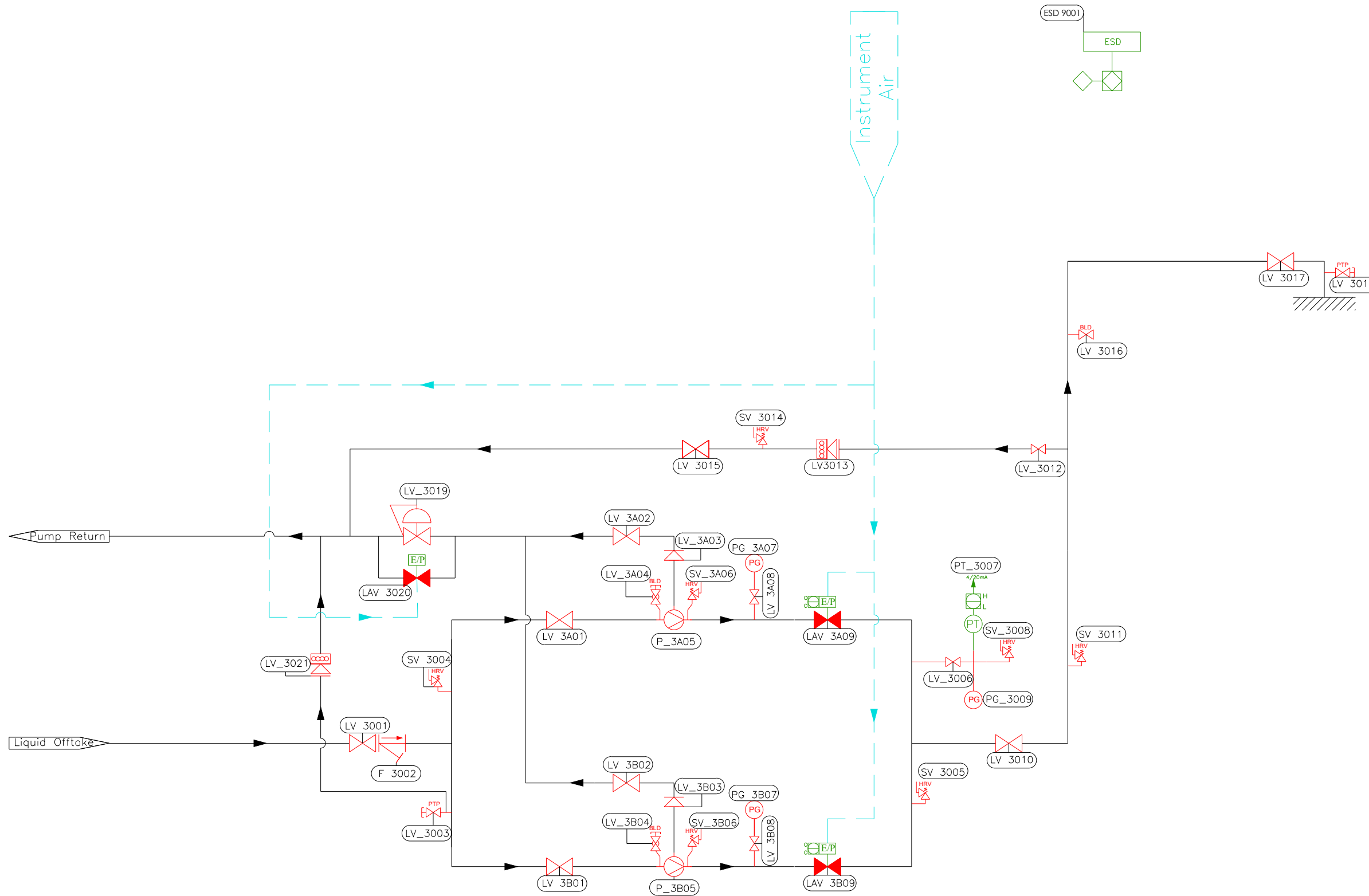


Vessels - SH02 + SH03

**CONSTRUCTION ISSUE**

REV	DRAWN	DATE	CHKD	DATE	APPD	DATE	MODIFICATION
7							
6							
5							
4							
3							
2							
1	PJ	07/10/20	RW	07/10/20			POSITION SENSOR REMOVED FROM LAV 3020. CONSTRUCTION ISSUE.
0	PJ	11/08/20					INITIAL ISSUE.

<b>TITLE</b> Single Vessel Close Up Air Liquide - Biodynamic 3 x 4 T AG Pumped Liquid - Biomethane			FLOGAS BRITAIN LIMITED WATERMEAD BUSINESS PARK, RAYNS WAY, SYSTON, LEICESTER LE7 1PF, United Kingdom Tel: +44 (0) 1162 649 000 Fax: +44 (0) 1162 649 012 Email: flogasenergyservices@flogas.co.uk Website: www.flogas.co.uk
<b>FLOGAS REF:</b> C2814			
<b>CLIENT ORDER REF:</b>		<b>SCALE</b> NTS @ A3 SHEET 3 OF 6	
<b>CLIENT:</b> Air Liquide		<b>DRG. No</b> 2278-3	
<b>TOLERANCE:</b> NA		<b>REV</b> 1	




Pump Area - SH04

**CONSTRUCTION ISSUE**

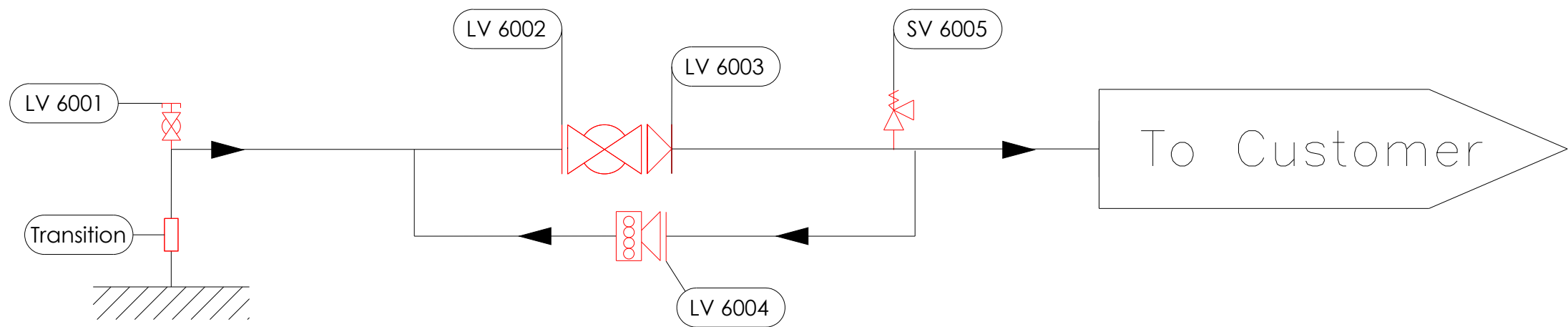
REV	DRAWN	DATE	CHKD	DATE	APPD	DATE	MODIFICATION
7							
6							
5							
4							
3							
2							
1	PJ	07/10/20	RW	07/10/20			POSITION SENSOR REMOVED FROM LAV 3020. CONSTRUCTION ISSUE.
0	PJ	11/08/20					INITIAL ISSUE.

TITLE	Pump Area Air Liquide - Biodynamic 3 x 4 T AG Pumped Liquid - Biomethane
FLOGAS REF:	C2814
CLIENT ORDER REF:	
CLIENT:	Air Liquide
TOLERANCE:	NA



FLOGAS BRITAIN LIMITED  
WATERMEAD BUSINESS PARK,  
RAYNS WAY,  
SYSTEM, LEICESTER LE7 1PF,  
United Kingdom  
Tel: +44 (0) 1162 649 000  
Fax: +44 (0) 1162 649 012  
Email: flogasenergyservices@flogas.co.uk  
Website: www.flogas.co.uk

SCALE	NTS @ A3	SHEET	4 OF 6
DRG. No	2278-4		




To Customer – SH05

**CONSTRUCTION ISSUE**

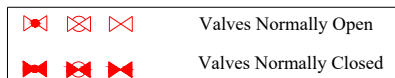
REV	DRAWN	DATE	CHKD	DATE	APPD	DATE	MODIFICATION
7							
6							
5							
4							
3							
2							
1	PJ	07/10/20	RW	07/10/20			POSITION SENSOR REMOVED FROM LAV 3020. CONSTRUCTION ISSUE.
0	PJ	11/08/20					INITIAL ISSUE.

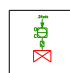
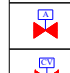





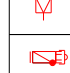
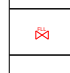





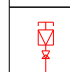

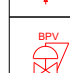

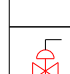
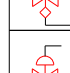




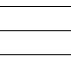
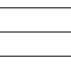
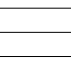


TITLE	Liquid Supply to Customer Air Liquide - Biodynamic 3 x 4 T AG Pumped Liquid - Biomethane
FLOGAS REF:	C2814
CLIENT ORDER REF:	
CLIENT:	Air Liquide
TOLERANCE:	NA


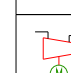
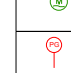
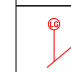
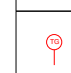
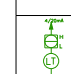
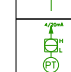
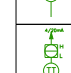
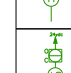
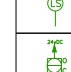
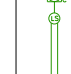
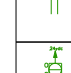
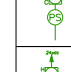
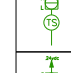
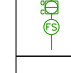




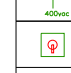
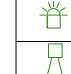
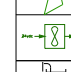
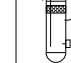
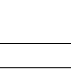
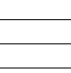


FLOGAS BRITAIN LIMITED  
WATERMEAD BUSINESS PARK,  
RAYSON WAY,  
SYSTEM, LEICESTER LE7 1PF,  
United Kingdom  
Tel: +44 (0) 1162 649 000  
Fax: +44 (0) 1162 649 012  
Email: flogasenergyservices@flogas.co.uk  
Website: www.flogas.co.uk

SCALE	NTS @ A3	SHEET	5 OF 6
DRG. No	2278-5	REV	1



	Valve - Electric Actuated	LAV VAV
	Valve - Air Actuated	LAV VAV
	Valve - Air Actuated	LAV VAV
	Valve - ElectroPneumatic	LAV VAV
	Isolation Valve	LV VV
	Non-Return Valve	LV VV
	HOKE Differential Pressure Non Return Valve	LV VV
	Safety Relief Valve	SV
	Hydro-static Relief Valve	SV
	Excess Flow Valve	LV VV
	Check Lock Valve	LV VV
	Acme Fill Connection c/w check & NRV	LV VV
	Ullage Valve	LV VV
	Pressure Test Point	LV VV
	Bleed Valve	LV VV
	Small Isolation Valve	LV VV
	Y-Type Filter	F
	Flanged Joint	n/a
	Tank Vapour off-take Valve c/w ullage (Fixed Liquid Level Gauge)	VV
	Tank Filling Valve c/w 2 x back check valves	LV
	Tank Liquid off-take Valve c/w excess flow valve	LV
	8017 DP	LV
	Bypass Valve	LV VV
	Pressure Regulator	LV VV
	Pressure Regulator (With OPSO)	LV VV
	Pressure Regulator (Without OPSO)	LV VV
	Air Dump Valve	LV VV
	Orifice Plate	OP
	Dryer	D
	Ebsray RV18 Bypass Valve	LV


	Liquid Propane Pump Assembly	DOL /VSD
	Compressor	COM
	Pressure Gauge	LV VV
	Float Level Gauge	LG
	Temperature Gauge	TG
	Level Transmitter	LT
	Pressure Transmitter	PT
	Temperature Transmitter	TT
	Level Switch	LS
	Liquiphant Style Gauge	TF
	Pressure Switch	PS
	Temperature Switch	TS
	Flow Switch	FS
	Limit Switch	N/A
	Safety Device Symbol	N/A
	Gas Detector Head	GD
	Flame Detector Head	FD
	Cold Detector Head	CD
	Emergency Stop Device	ESD
	Electrical Plug & Socket	n/a
	Electrical Isolator	n/a
	Warning Beacon	n/a
	Warning Light	n/a
	Flow Meter	n/a
	Knock-out Pot	n/a

P&ID legend – SH06

CONSTRUCTION ISSUE

REV	DRAWN	DATE	CHKD	DATE	APPD	DATE	MODIFICATION
7							
6							
5							
4							
3							
2							
1	PJ	07/10/20	RW	07/10/20			POSITION SENSOR REMOVED FROM LAV 3020. CONSTRUCTION ISSUE.
0	PJ	11/08/20					INITIAL ISSUE.

TITLE	P&ID Legend Air Liquide - Biodynamic 3 x 4 T AG Pumped Liquid - Biomethane
FLOGAS REF:	C2814
CLIENT ORDER REF:	
CLIENT:	Air Liquide
TOLERANCE:	NA

	FLOGAS BRITAIN LIMITED WATERMEAD BUSINESS PARK, RAYNS WAY, SYSTEM, LEICESTER LE7 1PF, United Kingdom Tel: +44 (0) 1162 649 000 Fax: +44 (0) 1162 649 012 Email: <a href="mailto:flogasenergyservices@flogas.co.uk">flogasenergyservices@flogas.co.uk</a> Website: <a href="http://www.flogas.co.uk">www.flogas.co.uk</a>
	SCALE NTS @ A3 SHEET 6 OF 6 DRG. No 2278-6