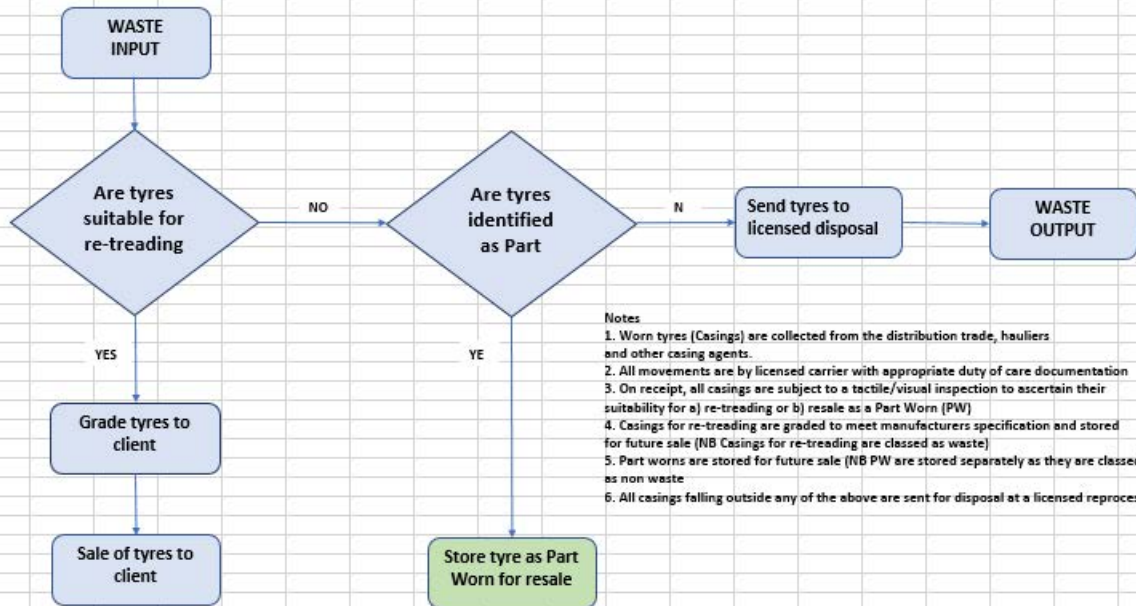


Schematic waste flow diagram



Notes

1. Worn tyres (Casings) are collected from the distribution trade, hauliers and other casing agents.
2. All movements are by licensed carrier with appropriate duty of care documentation
3. On receipt, all casings are subject to a tactile/visual inspection to ascertain their suitability for a) re-treading or b) resale as a Part Worn (PW)
4. Casings for re-treading are graded to meet manufacturers specification and stored for future sale (NB Casings for re-treading are classed as waste)
5. Part worns are stored for future sale (NB PW are stored separately as they are classed as non waste)
6. All casings falling outside any of the above are sent for disposal at a licensed reprocessor