



Site Boundary

Rev	Date	Description	Drn	Chk	App
00	26.02.19	314395	SP	RG	ML

Nuralite

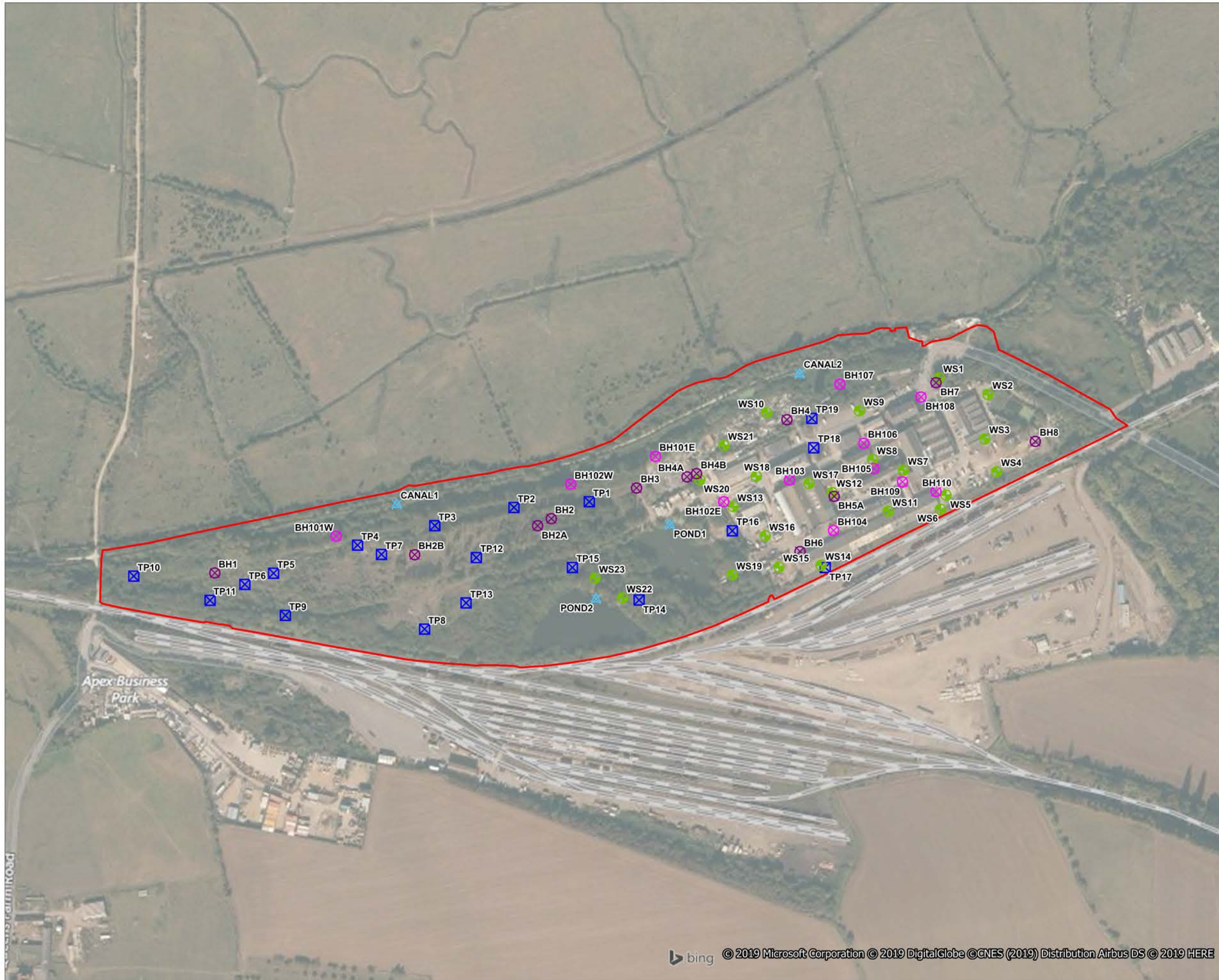
Figure 1
Site Location Plan

0 300
Metres
Scale = 1:10,000 @ A3

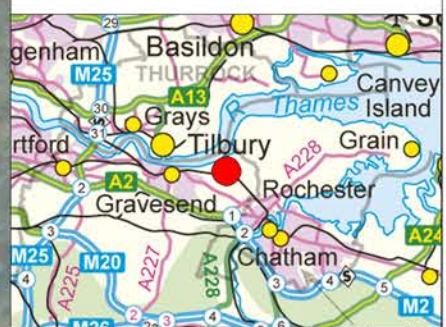
REV 00

© 2019 Microsoft Corporation © 2019 DigitalGlobe © CNES (2019) Distribution Airbus DS © 2019 HERE

File Name : U:\Geo\314000s\314395 - Nuralite\GIS



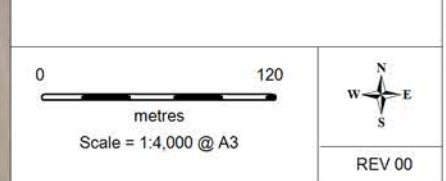
- Site boundary
- WSP Exploratory Hole Locations**
- ⊗ Borehole (BH)
- ⊗ Surface water sample
- ⊗ Trial Pit (TP)
- ⊗ Window Sample (WS)
- Lee Remediation Exploratory Hole Locations**
- ⊗ Borehole (BH)



Rev	Date	Description	Drn	Chk	App
00	26.02.19	314395	SP	RG	ML



Figure 2
Previous Site Investigations Plan



Contains Ordnance Survey data © Crown copyright and database right 2019

- Block A; 300m²
- Block B; 1525m²
- Block C; 2117m²
- Block D; 2260m²
- Block E; 2260m²
- Block F; 2260m²
- Block G; 2202m²
- Block H; 2329m²
- Block I; 2260m²
- Block J; 2260m²
- Block K; 2160m²
- Block L; 2200m²



Site boundary



Rev	Date	Description	Drn	Chk	App
00	26.02.19	314395	SP	RG	ML

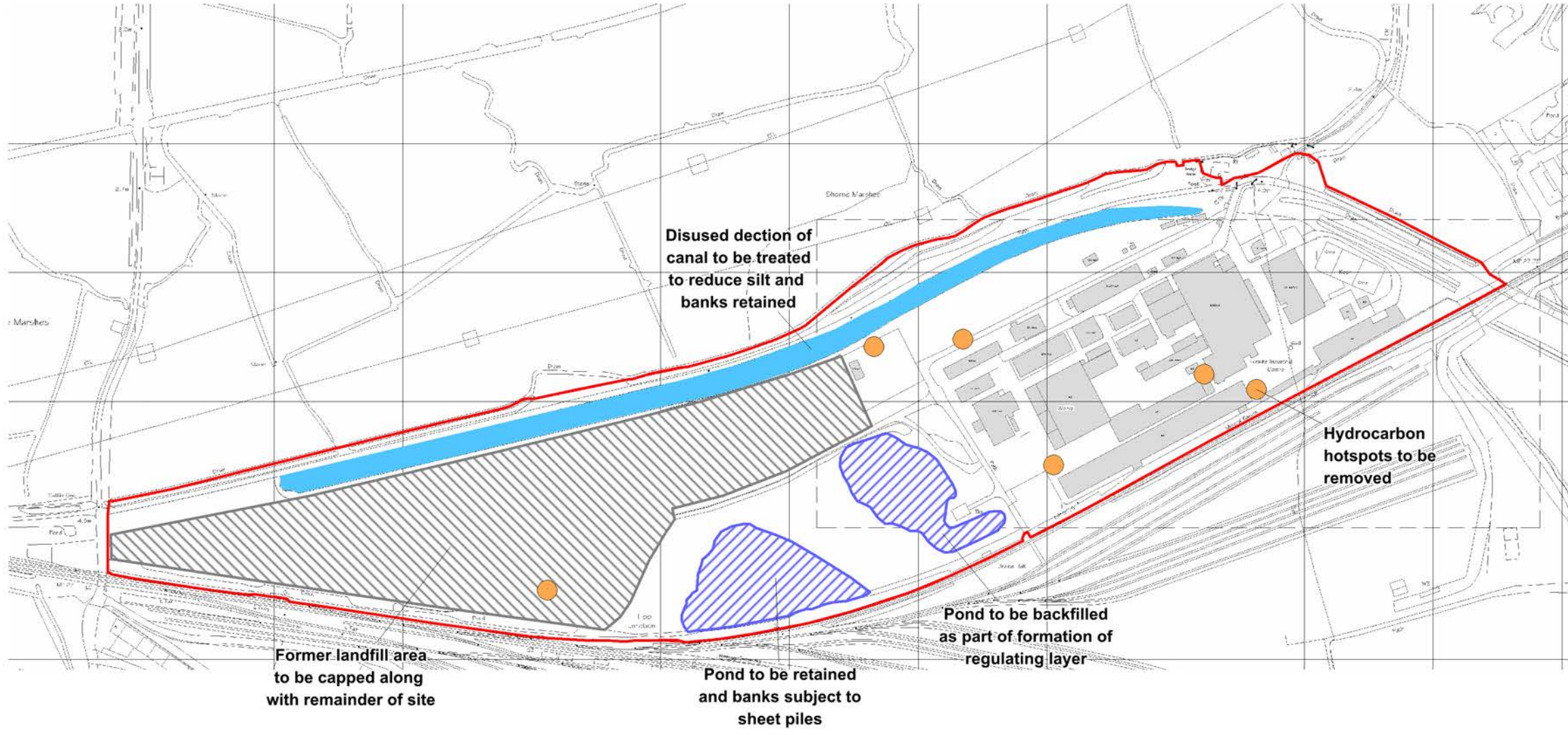


Figure 3
Proposed Development Plan

Not to Scale

- Site boundary
- Disused canal
- Existing pond
- Former landfill
- Hydrocarbon hotspots

Note:
The whole site is underlain by asbestos impacted made ground and therefore is subject to cover system detailed in the RMS



Rev	Date	Description	Drn	Chk	App
00	26.02.19	314395	SP	RG	ML

Nuralite



Figure 4
Remediation Plan

