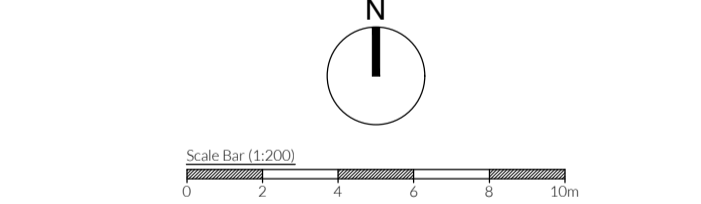


NOTES
Drawing for indication only. Reproduced with the permission of the controller of H.M.S.O.

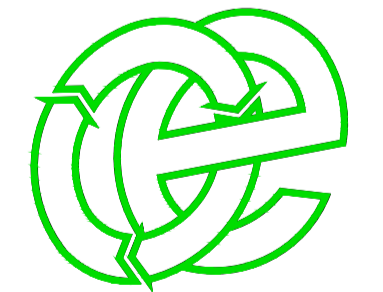
Rev:	Date:	Init:	Description:
-	08.11.23	RS/IA	Initial drawing
A	07.03.24	JH	Amendment
B	08.03.24	JH	Parking added
C	11.06.24	JH	Working amendment
D	19.06.24	RS	Application submission
E	26.06.24	RS	Quarantine area added
F	01.10.24	IA	Emission point added
G	24.10.25	RS	Schedule 5 response update
H	05.11.25	RS	Crash barriers added
J	06.11.25	RS	Minor amendment
K	10.03.26	JH	Amendment
L	10.03.26	JH	Amendment
M	12.03.26	JH	Amendment

- KEY:**
- Permit boundary
 - Chemicals and raw materials storage area
 - Out-of-hours plant storage area
 - Extent of concrete surfacing within the permit boundary
 - Unsurfaced areas (freely-draining to ground)
 - Bund wall around external containment area
 - Perimeter bunding around main facility (including access ramp)
 - Fire wall
 - Bunding around the thresholds of Building 1
 - Vehicle crash barrier (Armo, or similar)
 - INT Full retention oil interceptor (fitted with penstock valve)
 - Piped surface drainage (surface, foul, building)
 - Linear slot drains (aco or similar) - (surface, building)
 - MH Manhole (foul, surface, building)
 - IC Inspection cover (other services)
 - Gully
 - Quarantine area (only used in the event of a fire and kept clear at all other times)
 - 6 metre separation distance around the quarantine area where no other combustible wastes will be stored
 - Penstock valve remotely deployable in the event of an emergency or spill to shut-off yard drainage preventing site discharge to surface water system
 - Bunded fuel tank (1,340 litre or similar)
 - H On-site fire hydrant
 - Numbered boundary odour monitoring points (indicative)
 - Dosing points
 - Venting points
 - Odour control lines
 - Firefighting equipment/extinguishers (indicative locations)
 - Spill kits (indicative locations)

Additional point references	
Item	Description
1	Polymer make-up system
2	Solid sludge hopper
3	Waste oils/grease (BOCs)
4	5-way manifold
5	Flush point



Oaktree Environmental Ltd
Waste, Planning and Environmental Consultants



DRAWING TITLE
PERMIT LAYOUT PLAN

CLIENT
Elliott Environmental Drainage Ltd

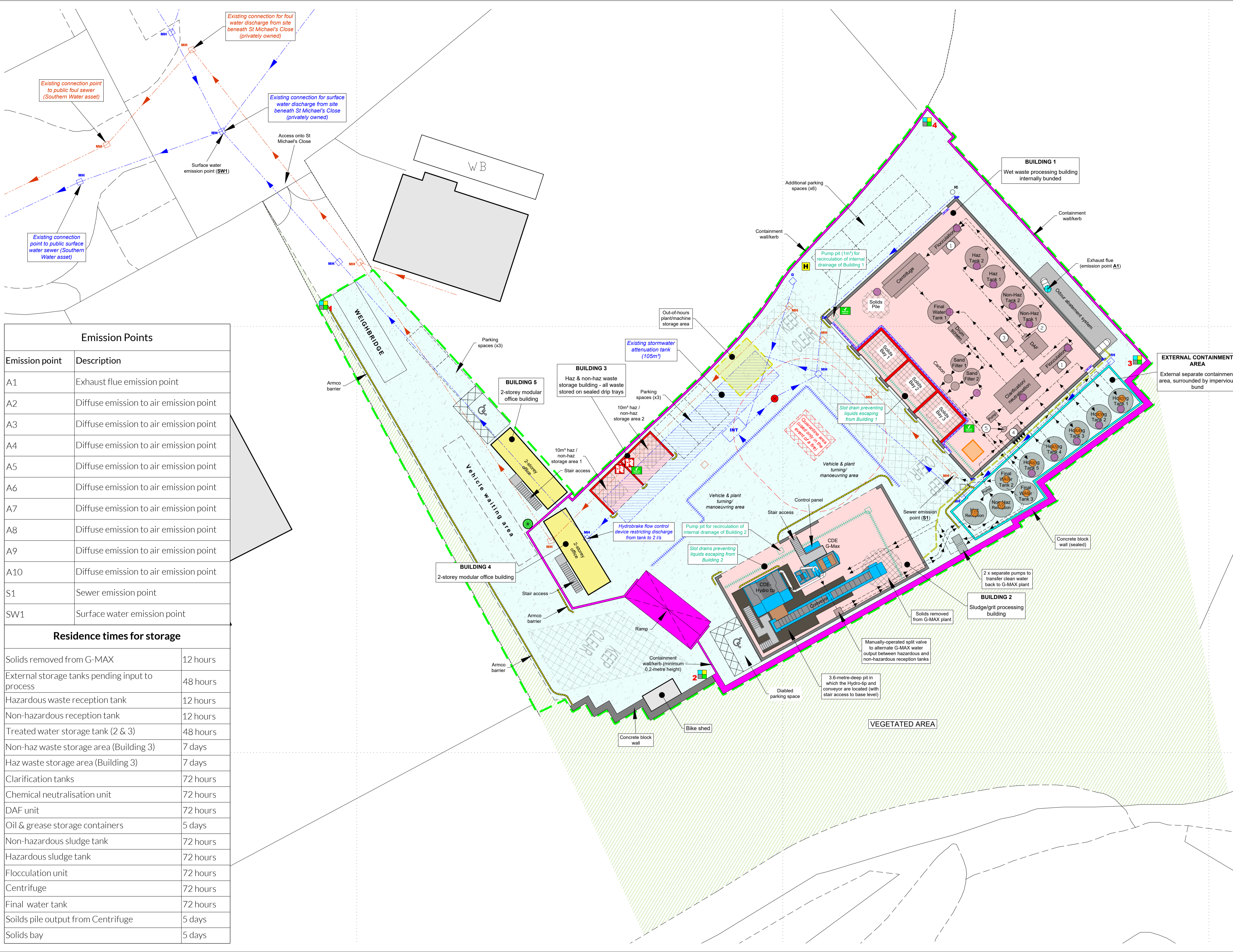
PROJECT/SITE
St Michael's Close, Aylesford, Kent

SCALE @ A1 1:200	CLIENT NO 2499	JOB NO 002
----------------------------	--------------------------	----------------------

DRAWING NUMBER 2499-002-03	REV M	STATUS Issued
--------------------------------------	-----------------	-------------------------

DRAWN BY RS/JH	CHECKED RS	DATE 12.03.26
--------------------------	----------------------	-------------------------

Lime House, Road Two, Winsford, Cheshire, CW7 3QZ
t: 01606 558833 | e: sales@oaktree-environmental.co.uk



Emission Points

Emission point	Description
A1	Exhaust flue emission point
A2	Diffuse emission to air emission point
A3	Diffuse emission to air emission point
A4	Diffuse emission to air emission point
A5	Diffuse emission to air emission point
A6	Diffuse emission to air emission point
A7	Diffuse emission to air emission point
A8	Diffuse emission to air emission point
A9	Diffuse emission to air emission point
A10	Diffuse emission to air emission point
S1	Sewer emission point
SW1	Surface water emission point

Residence times for storage

Solids removed from G-MAX	12 hours
External storage tanks pending input to process	48 hours
Hazardous waste reception tank	12 hours
Non-hazardous reception tank	12 hours
Treated water storage tank (2 & 3)	48 hours
Non-haz waste storage area (Building 3)	7 days
Haz waste storage area (Building 3)	7 days
Clarification tanks	72 hours
Chemical neutralisation unit	72 hours
DAF unit	72 hours
Oil & grease storage containers	5 days
Non-hazardous sludge tank	72 hours
Hazardous sludge tank	72 hours
Flocculation unit	72 hours
Centrifuge	72 hours
Final water tank	72 hours
Solids pile output from Centrifuge	5 days
Solids bay	5 days