

Nature and Heritage Conservation

Screening Report: Bespoke installation

| | |
|-------------------------|--------------------------|
| Reference | EPR/WP3036ZR/P002 |
| NGR | TQ 75017 69558 |
| Buffer (m) | 23 |
| Date report produced | 18/10/2023 |
| Number of maps enclosed | 3 |

This nature and heritage conservation report

The nature and heritage conservation sites, protected species and habitats, and other features identified in the table below **must be considered in your application**.

In the further information column, there are links which give more information about the site or feature type and indicate where you are able to self-serve to get the most accurate site boundaries or feature locations.

Most designated site boundaries are available on [Magic map](#). Using Magic map allows you to zoom in and see the site boundary or feature location in detail, Magic map also allows you to measure the distance from these sites and features to your proposed boundary. [Help videos](#) are available on Magic map to guide you through.

Where information is not publicly available, or is only available to those with GIS access, we have provided a map at the end of this report.

| Sites and Features within screening distance | Screening distance (km) | Further Information |
|--|--------------------------------|---|
| Special Protection Area (pSPA or SPA) Medway Estuary & Marshes | 5 | Joint Nature Conservation Committee and Magic map |
| Marine Conservation Zone (MCZ) Medway Estuary – Zone 1 & 2 | 5 | Joint Nature Conservation Committee and Magic map |
| Ramsar Medway Estuary & Marshes | 5 | Joint Nature Conservation Committee and Magic map |

Sites of Special Scientific Interest (SSSI) 5 [Natural England](#) and [Magic map](#)
Chattenden Woods and Lodge Hills

Tower Hill to Cockham Wood

Local Wildlife Sites (LWS) (see map below) 2 [Appropriate Local Record Centre \(LRC\)](#)
Great Lines, Gillingham [Appropriate Wildlife Trust](#)

Protected Species within screening distance

Smelt Migratory Route
European Eel Migratory Route
Allis Shad Migratory Route
River Lamprey Migratory Route
Sea Lamprey Migratory Route

(see map below)

Screening distance (km) Further Information

up to 2 [Natural England](#)
[Appropriate Local Record Centre \(LRC\)](#)
[National Biological Network \(NBN\)](#)

Environment Agency. Dial 03708 506 506 for your local Fisheries and Biodiversity team

Protected Habitats within screening distance

Mudflats (see map below)

Screening distance (km) Further Information

up to 2 [Natural England](#)

Where protected species are present, a licence may be required from [Natural England](#) to handle the species or undertake the proposed works.

The relevant Local Records Centre must be contacted for information on the features within local wildlife sites. A small administration charge may also be incurred for this service.

The following nature and heritage conservation sites, protected species and habitats, and other features have been checked for, where they are relevant for the permit type requested, but have not been found within screening distance of your site unless included in the list above.

Special Areas of Conservation (cSAC or SAC), Special Protection Area (pSPA or SPA), Marine Conservation Zone (MCZ), Ramsar, Sites of Special Scientific Interest (SSSI), National Nature Reserve (NNR), Local Nature Reserve (LNR), Local Wildlife Sites (LWS), Ancient Woodland, relevant species and habitats.


Please note we have screened this application for features for which we have information. It is however your responsibility to comply with all environmental and planning legislation, this information does not imply that no other checks or permissions will be required.

The nature and heritage screening we have conducted as part of this report is subject to change as it is based on data we hold at the time it is generated. We cannot guarantee there will be no changes to our screening data between the date of this report and the submission of the permit application, which could result in the return of an application or requesting further information

Local Wildlife Sites



Legend

 Local Wildlife Sites



0625

Metres

1: 25,000

N

W




S

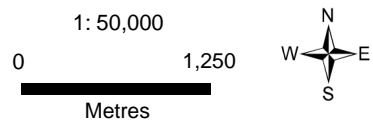
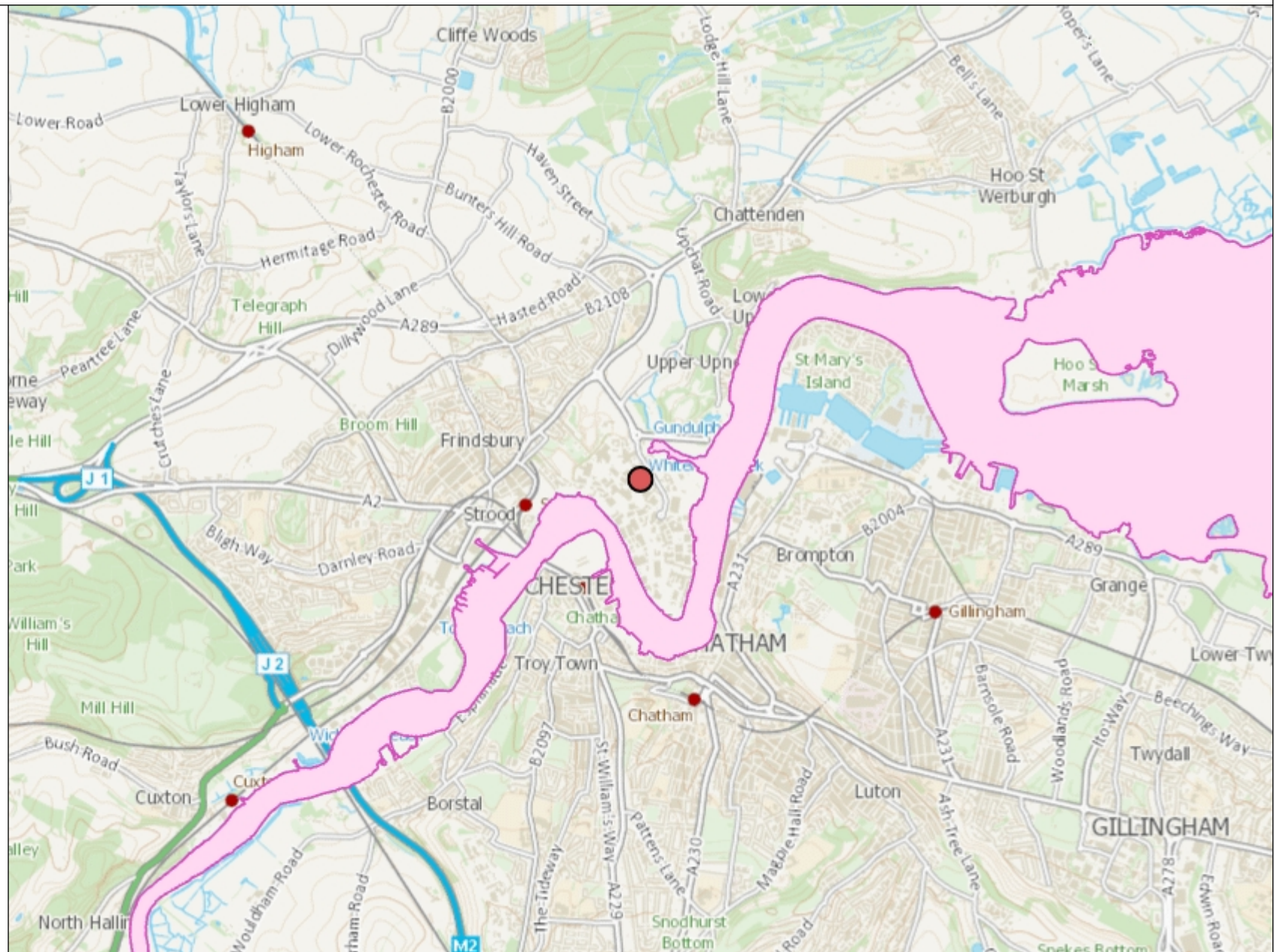
E

Protected Species

Legend


Protected species screened for Env
Permits - complete set

-  Protected species, non fish
-  Protected fish
-  Protected fish migratory route



Protected Habitats

Legend

-  Protected Habitats screened for En Permits

