

CDM REGULATIONS 2015 RESIDUAL HAZARDS
RESIDUAL HAZARDS IDENTIFIED

- CONSTRUCTION**
1. THE SITE IS BELIEVED TO BE A FORMER HOUSEHOLD REFUSE TIP. CONTRACTORS AND OTHERS ENGAGED TO WORK ON THE SITE SHOULD BE MADE AWARE OF THE POTENTIAL FOR CONTAMINATED GROUND CONDITIONS AND HAZARDOUS SUBSTANCES.
 2. NO SIGNIFICANT OTHER HAZARDS BEYOND THOSE KNOWN TO AN EXPERIENCED CONTRACTOR.
- FUTURE DEMOLITION**
- A. THE SITE'S ORIGINAL USE AND ITS POTENTIAL FOR CONTAMINATED OR HAZARDOUS GROUND CONDITIONS SHOULD BE HIGHLIGHTED TO THE END USER.
 - B. NO SIGNIFICANT OTHER HAZARDS BEYOND THOSE KNOWN TO AN EXPERIENCED CONTRACTOR.

THIS REGISTER IS A NON-EXHAUSTIVE LIST OF RESIDUAL HAZARDS RELATIVE TO THE WORKS SHOWN ON THIS DRAWING THAT HAVE BEEN IDENTIFIED DURING THE DESIGN PHASE.

IT IS ASSUMED THAT ALL WORKS WILL BE CARRIED OUT BY A CONTRACTOR WITH THE APPROPRIATE HILLS, MOUNTAINS & EXPOSURE, AND IT IS THE RESPONSIBILITY OF THE CONTRACTOR TO TAKE THE NECESSARY PRECAUTIONS TO AVOID THESE HAZARDS.

This drawing remains the property of Morgan Thacker Ltd and may not be reproduced without its express permission.

Historic data provided by Kropf Hole Consulting Civil, Structural and Geotechnical Engineers.

J.C.White drawing 1700693-02 titled 'Orthographic Aerial Image & Level Survey', dated April 2019 has been used to define the existing ground level surface profile.

BDI Architects drawing 2388-P001-Rev 1: titled 'Site Plan', dated October 2019 has been used to define the proposed ground surface profile.

Various surfaces were developed from the survey and design information extracted from the above drawings, these are defined below:

EG
Existing ground level defined by the J.C.White survey data.

ASL
No surface strip has been allowed for.

Proposed Finish
Finished surface site profile as defined by the BDI Architects drawing with additional points introduced to define the road profiles and car parks & garden levels interpolated between plots and roads.

Proposed Formation
Formation level (underside) of the permanent works defined by the proposed finished surface level reduced by an assumed 750mm construction thickness.

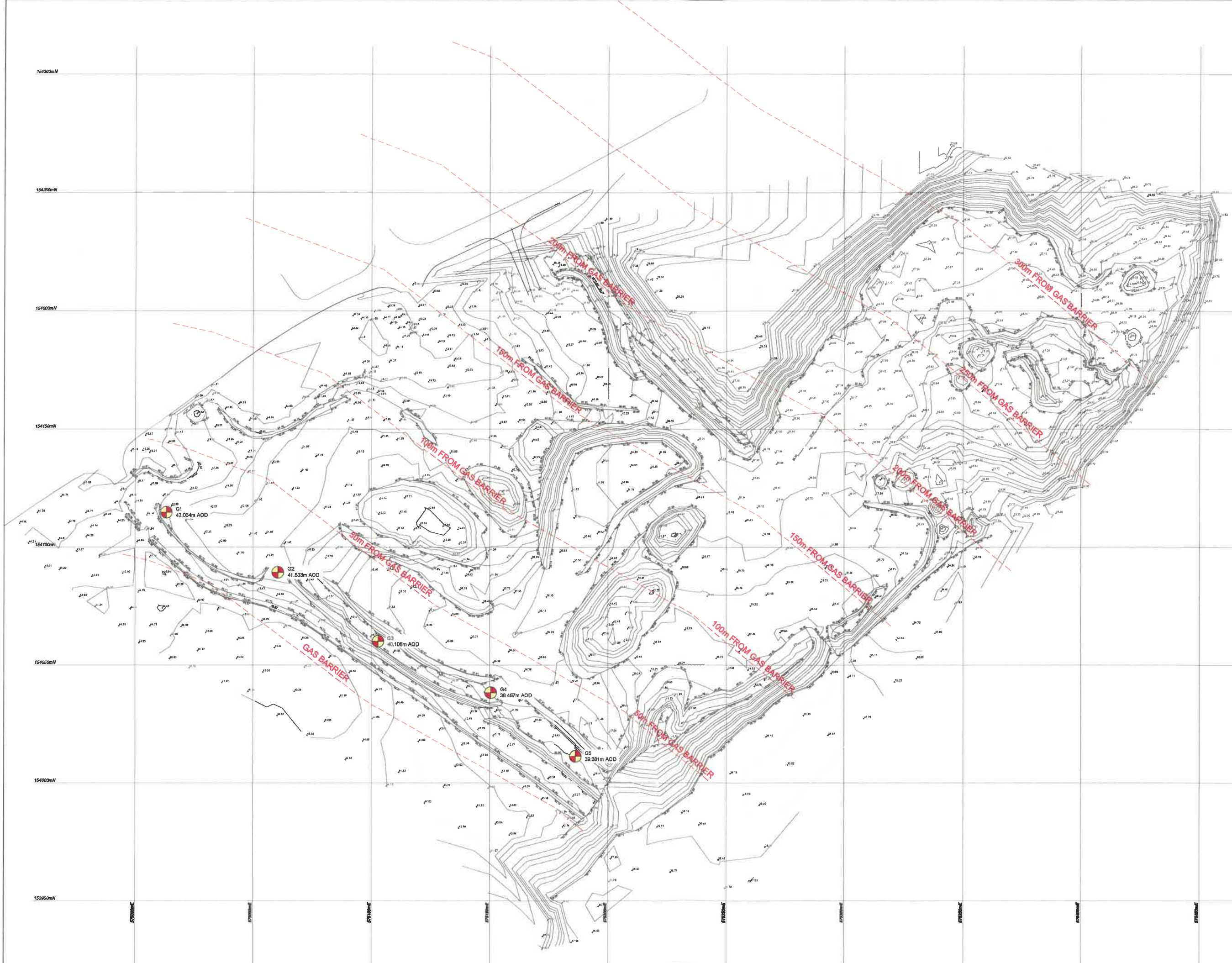
EG to Formation
Comparison between EG (existing ground level) and Proposed Formation surfaces delivering total volume of cut and fill for the whole site in grid operation based on assumed construction thickness.

Contours in red at 0.50m intervals represent areas of cut. Contours in blue at 0.50m intervals represent areas of fill. Major contours displayed in light grey at 1.00m intervals and minor contours displayed in dark grey at 0.20m intervals represent existing ground level.

A grid is presented at 25.00m intervals.

No allowance has been made for building or compaction.

This assessment has been produced based on preliminary and assumed data. A more detailed volumetric assessment from a comprehensive set of proposed levels and construction thickness will be required if greater confidence is required in the assessment conclusion.



Rev	Date	Description	By
A	21.01.2020	D1 & BHA symbols corrected	MJW

Morgan Thacker

**INSTALLED GAS BARRIER
RELATIVE TO EXISTING GROUND**

Prepared by: P.J.BURKE
FARLEIGH HILL
TCV.

Drawn by: 7th July 2020
Scale: 1:500 @ A4
Sheet number: 1 of 1

Drawing number: MTL-127-21



CDM REGULATIONS 2015 RESIDUAL HAZARD
RESIDUAL HAZARD IDENTIFICATION

CONSTRUCTION

1. THE SITE IS BELIEVED TO BE A FORMER HOUSEHOLD REFUSE TIP. CONTRACTORS AND OTHERS ENGAGED TO WORK ON THE SITE SHOULD BE MADE AWARE OF THE POTENTIAL FOR CONTAMINATED GROUND CONDITIONS AND HAZARDOUS SUBSTANCES.
2. NO SIGNIFICANT OTHER HAZARDS BEYOND THOSE KNOWN TO AN EXPERIENCED CONTRACTOR.

FUTURE DEMOLITION

- A. THE SITE'S ORIGINAL USE AND ITS POTENTIAL FOR CONTAMINATED OR HAZARDOUS GROUND CONDITIONS SHOULD BE HIGHLIGHTED TO THE END USER.
- B. NO SIGNIFICANT OTHER HAZARDS BEYOND THOSE KNOWN TO AN EXPERIENCED CONTRACTOR.

THE REGISTER IS A NON-EXHAUSTIVE LIST OF RESIDUAL HAZARDS RELATIVE TO THE WORKS SHOWN ON THIS DRAWING THAT HAVE BEEN IDENTIFIED DURING THE DESIGN PHASE.

IT IS ADVISED THAT ALL WORKS WILL BE CARRIED OUT BY A CONTRACTOR WITH THE APPROPRIATE SKILL, KNOWLEDGE & EXPERIENCE AND IT IS TO BE ASSUMED THAT THE CONTRACTOR HAS THE NECESSARY COMPETENCY TO FULLY FULFIL THE ROLE.

This drawing remains the property of Morgan Thacker Ltd and may not be reproduced without its express permission.

Historic data provided by Knap-Holme Consulting Civil, Structural and Geotechnical Engineers.

J.C. White drawing 1700093-02 titled 'Orthographic Aerial Image & Level Survey', dated April 2019 has been used to define the existing ground level surface profile.

SHD Architects drawing 2989-P0001-Rev E titled 'Site Plan', dated October 2015 has been used to define the proposed ground surface profile.

Various surfaces were developed from the survey and design information extracted from the above drawings, these are defined below:

EG
Existing ground level defined by the J.C. White survey data.

AS
No surface strip has been allowed for.

Proposed Finish
Finished surface site profile as defined by the SHD Architects drawing with additional points introduced to define the road profiles and car parks & garden levels interpolated between plots and roads.

Proposed Formation
Formation level (underside) of the permanent works defined by the proposed finished surface level reduced by an assumed 750mm construction thickness.

EG to Formation
Comparison between EG (existing ground level) and Proposed Formation surfaces delivering total volume of cut and fill for the whole site re-grade operation based on assumed construction thickness.

Contours in red at 0.50m intervals represent areas of cut. Contours in blue at 0.50m intervals represent areas of fill. Major contours displayed in light grey at 1.00m intervals and minor contours displayed in dark grey at 0.20m intervals represent existing ground level.

A grid is presented at 25.00m intervals.

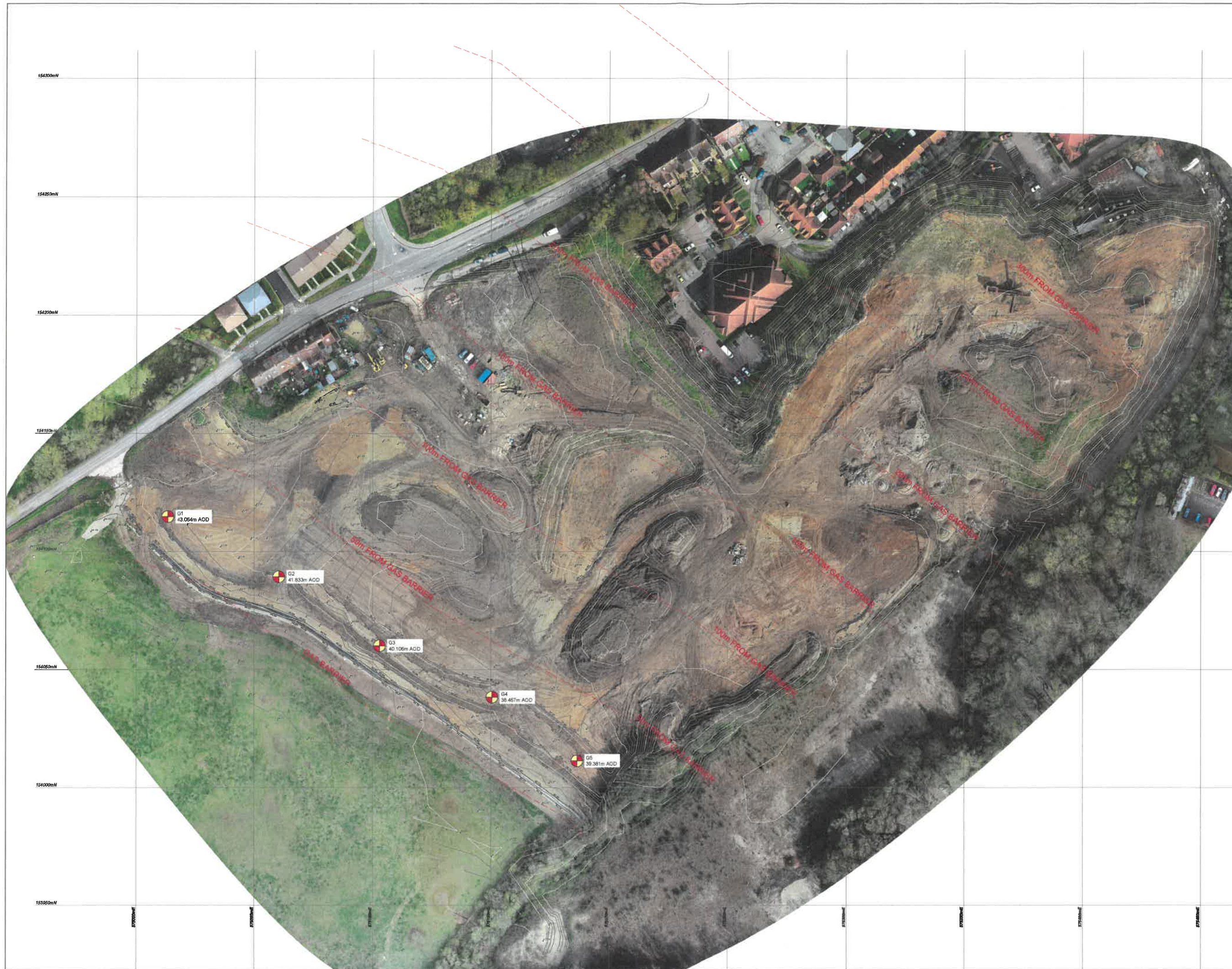
No allowance has been made for building or compaction.

This assessment has been produced based on preliminary and assumed data. A more detailed volume assessment from a comprehensive set of proposed levels and construction thickness will be required if greater confidence is required in the assessment conclusion.

GAS WELL

GAS BARRIER RADIAL MARKER

A	21 01 2022	D1 & BHA symbols corrected	MJW
Rev	Date	Description	By
Morgan Thacker			
INSTALLED GAS BARRIER RELATIVE TO PROPOSED DEVELOPMENT			
Project: P.J.BURKE FARLEIGH HILL TQ1L			
Drn No:	79 July 2020	Scale:	Sheet number: 1 of 1
Drawing number:	MTL-127-20		Revised:



CDM REGULATIONS 2015 RESIDUAL HAZARD RESIDUAL HAZARDS IDENTIFIED

CONSTRUCTION

1. THE SITE IS BELIEVED TO BE A FORMER HOUSEHOLD REFUSE TIP. CONTRACTORS AND OTHERS ENGAGED TO WORK ON THE SITE SHOULD BE MADE AWARE OF THE POTENTIAL FOR CONTAMINATED GROUND CONDITIONS AND HAZARDOUS SUBSTANCES.
2. NO SIGNIFICANT OTHER HAZARDS BEYOND THOSE KNOWN TO AN EXPERIENCED CONTRACTOR.

FUTURE DEMOLITION

- A. THE SITE'S ORIGINAL USE AND ITS POTENTIAL FOR CONTAMINATED OR HAZARDOUS GROUND CONDITIONS SHOULD BE HIGHLIGHTED TO THE END USER.
- B. NO SIGNIFICANT OTHER HAZARDS BEYOND THOSE KNOWN TO AN EXPERIENCED CONTRACTOR.

THIS REGISTER IS A NON-EXHAUSTIVE LIST OF RESIDUAL HAZARDS RELATIVE TO THE WORKS SHOWN ON THIS DRAWING THAT HAVE BEEN IDENTIFIED DURING THE DESIGN STAGE.
IT IS ASSUMED THAT ALL WORKS WILL BE CARRIED OUT BY A CONTRACTOR WITH THE APPROPRIATE SKILLS, KNOWLEDGE & EXPERIENCE, WHO IS PART OF AN ORGANISATION, THE OPERATIONAL CAPABILITY NECESSARY TO FULFIL THE ROLE.

This drawing remains the property of Morgan Thacker Ltd and may not be reproduced without its express permission.

Historic data provided by Knapp Hicks Consulting Civil, Structural and Geotechnical Engineers.

J.C. White drawing 17/00035-02 titled 'Orthographic Aerial Image & Level Survey', dated April 2018 has been used to define the existing ground level surface profile.

BHD Architects drawing 2965-PO031-Rev E titled 'Site Plan', dated October 2015 has been used to define the proposed ground surface profile.

Various surfaces were developed from the survey and design information extracted from the above drawings, these are defined below:

EG
Existing ground level defined by the J.C. White survey data.

ASL
No surface strip has been allowed for.

Proposed Finish
Finished surface site profile as defined by the BHD Architects drawing with additional points introduced to define the road profiles and car/park & garden levels interpolated between plots and roads.

Proposed Formation
Formation level (underside) of the permanent works defined by the proposed finished surface level reduced by an assumed 750mm construction thickness.

EG to Formation
Comparison between EG (existing ground level) and Proposed Formation surfaces defining total volume of cut and fill for the whole site re-grade operation based on assumed construction thickness.

Contours in red at 0.50m intervals represent areas of cut. Contours in blue at 0.20m intervals represent areas of fill. Major contours displayed in light grey at 1.00m intervals and minor contours displayed in dark grey at 0.20m intervals represent existing ground level.

A grid is presented at 25.00m intervals.

No allowance has been made for building or compaction.

This assessment has been produced based on preliminary and assumed data. A more detailed volumetric assessment from a comprehensive set of proposed levels and construction thicknesses will be required if greater confidence is required in the assessment conclusion.

GAS WELL
 GAS BARRIER RADIAL MARKER

Rev	A	21.01.2020	D1 & BHA symbols corrected	MJW
INSTALLED GAS BARRIER RELATIVE TO EXISTING GROUND PLUS RASTER IMAGE				
Project: P.J BURKE FALEIGH HILL TOWL				
Drawn by	SAV	7th Aug 2020	Scale: 1:500 @ A3	Sheet number: 1 of 1
Drawing number:	MTL-127-22			Revision: /