
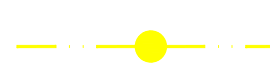
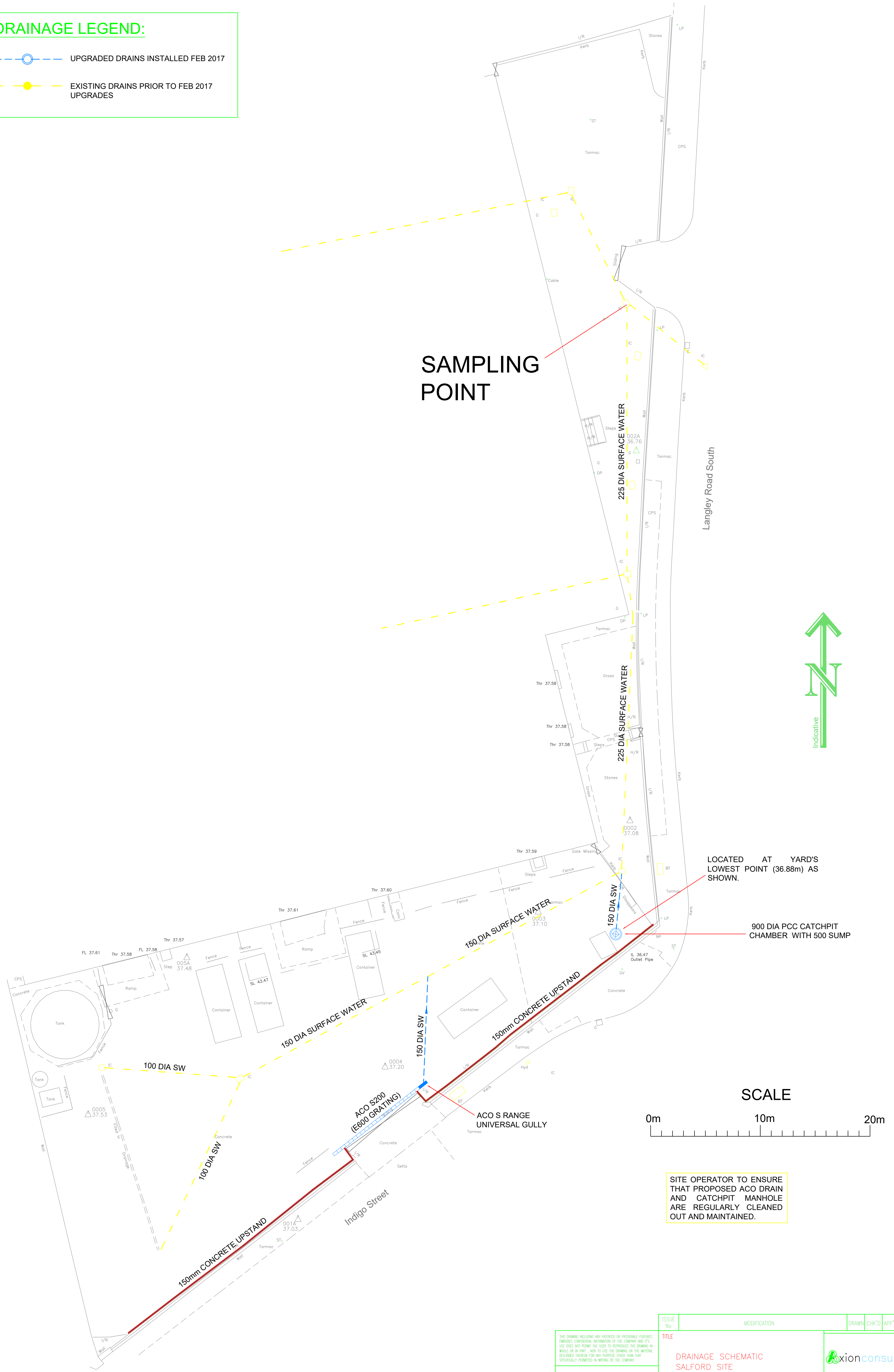


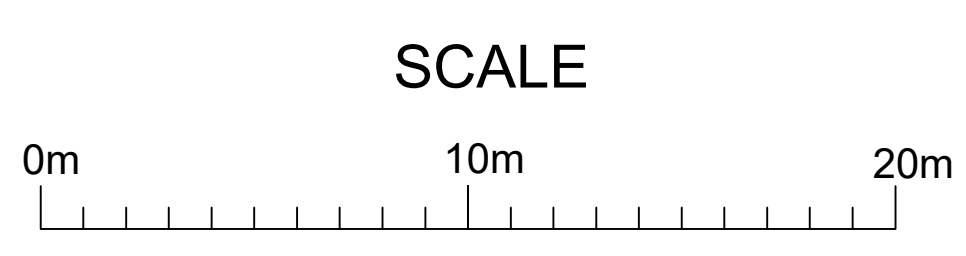
DRAINAGE LEGEND:

-  UPGRADED DRAINS INSTALLED FEB 2017
-  EXISTING DRAINS PRIOR TO FEB 2017 UPGRADES


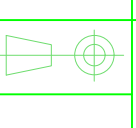


LOCATED AT YARD'S LOWEST POINT (36.88m) AS SHOWN.

900 DIA PCC CATCHPIT CHAMBER WITH 500 SUMP



SITE OPERATOR TO ENSURE THAT PROPOSED ACO DRAIN AND CATCHPIT MANHOLE ARE REGULARLY CLEANED OUT AND MAINTAINED.

ISSUE No.		MODIFICATION		DRAWN	CHK'D	APP'D	DATE
<p>THIS DRAWING INCLUDING ANY PATENTED OR PROPRIETARY FEATURES, MARKS, CONFIDENTIAL INFORMATION OF THE COMPANY AND ITS USE DOES NOT FORM THE BASIS TO REPRODUCE THE DRAWING IN WHOLE OR IN PART - NOR TO USE THE DRAWING OR THE MATERIALS DESCRIBED THEREON FOR ANY PURPOSE OTHER THAN THAT SPECIFICALLY PERMITTED IN WRITING BY THE COMPANY.</p>							
TITLE							
DRAINAGE SCHEMATIC SALFORD SITE							
DRAWN	MB	SCALE	DNS				
CHECKED	MB	DATE	31/01/2020				
APPROVED	MB						
DRAWING No. PSAL-044-001				ISSUE No. 1			
DO NOT SCALE							